

2024 CVBIA

Young Designers' Scholarship Competition

\$4,000 in scholarships available!

Coastal Virginia Building Industry's annual competition is a house design contest for high school students interested in drafting, architecture or home building. Students are encouraged to use 2D and/or 3D CAD software - no hand-drawn entries are accepted. Students should research influential architects and their design styles to create their project. Suggested (but not required) architects to research include: Greg Faulkner, Frank Gehry, Robert A.M. Stern, Robert Venturi or Frank Lloyd Wright.

To be eligible, students must be currently enrolled in a public or private secondary school in Chesapeake, Franklin, Hampton, Newport News, Norfolk, Poquoson, Portsmouth, Suffolk, Virginia Beach, Williamsburg, the Eastern Shore of Virginia and the counties of Gloucester, Isle of Wight, James City, Mathews and York.

Awards are presented to **first-place (\$1,500)**, **second-place (\$1,200)**, **third-place (\$800)** and **honorable mention (\$500)** winners.

The award money must be used within 15 months of graduating from high school. All awards are intended as a one-year grant and will be split equally between two terms and sent directly to the student's college, university or trade school. In order to receive the second payment, the recipient must be in "good academic standing" and complete a "Continued Scholarship Funding" form provided by CVBIA.

Entry deadline:

5 p.m., Friday, May 10, 2024

Questions? Email dfain@cvbia.com or visit our website at <https://www.cvbia.com/young-designers-scholarship-competition-information/>



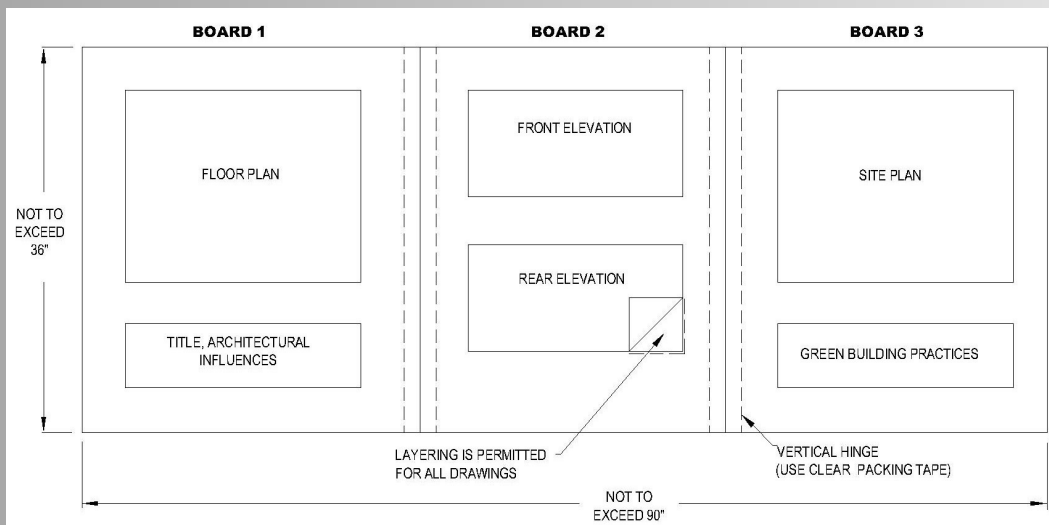
For entry details see the back of this sheet.

What should I design?

You have been hired to design a home for Chip & Staci Holcomb, their two children (ages 17 and 14) and a grandfather. The home should include at least two "green building" practices (for example, a geothermal heating and cooling system). The home can also include a feature compliant with the Americans with Disabilities Act. (This is encouraged but not mandatory.) The home's enclosed heated living area must be no more than 3,000 square feet with a 500 sq. ft limitation on the grandfather's suite. It can be a one- or two-story home with functional room sizes.

The lot on which the Holcomb's home will be built must meet Virginia Beach R-40 zoning rules (www.vbgov.com/government/departments/planning/zoning), must not exceed 1 acre in size and must be on the water (ocean, bay, river or pond).

You, as the home designer, can also decide the shape of your lot, its orientation and how much of it borders the water. Draw a simple site plan, noting the house placement, location of water and compass orientation.



This sample entry board layout must be used. When opened, boards should measure no more than 36 inches tall by 90 inches wide.

**Scale is as follows:
1 inch = 20 ft: site plan
1/4 inch = 1 ft: front/rear elevation and floor plans**

The judges will be looking for creativity, functional design and presentation quality!

Submission criteria:

- ✓ **Include on your drawing: a North arrow on both the site plan and floor plans; clearly label gross square footage of living space; label room names and individual room sizes (length x width); use solid black hatch or fill for walls on floor plans; label elevations; additional drawings such as color renderings may be added to Board 2 under the elevations, but they are not required. Include a title "2024 Young Designers Scholarship Competition." Under the title, specify in 50-150 words, the architectural influence(s) used. Under the site plan, specify the green building practices used. (no more than 150 words).**
- ✓ **Mount your drawings (using double-sided tape or spray adhesive) on three 30 x 36 inch foam-core boards (available at any art supply store), securely taped with clear packing tape to form 2 vertical hinges. DO NOT USE DUCT TAPE.**
- ✓ **Fill out the information sheet accompanying this form, put it in a plain envelope and tape it securely to the back of your entry. Don't put a name or any other identification on your entry! All envelopes will remain sealed until judging is completed.**