

## 2020 SCHEDULE OF EVENTS:

**May 9- Spring in Paris** - Fortune Telling, Kissing Booth, info booth on square selling Wagon Wheel Magazines, Museum Tours.

**July 4, 11am - Patriotic Program & Free Picnic Lunch** afterwards on Museum grounds or at the Community Center if bad weather.

**October 3 - Frontier Day** - Parade at 9am downtown.. At the Museum reenactments, shootouts, living history, have someone put in jail, whole family fun.

**October 10, 17, 24 - Logan County's Hayride through History-** Hayride through Oakwood Cemetery while meeting "Spirits" who tell their life stories. 10 yrs. and up, \$5. 9 yrs. and under free. **NOT SCARY.** Family friendly.

All donations are welcomed and go for Museum upkeep.

### Logan County Museum Association's Mission Statement

The Logan County Museum is an educational organization which encourages others to preserve and protect the history of Logan County, Arkansas, by operating a Museum, that collects, preserves and explains artifacts, documents and books, and by conducting programs that raise awareness, of the importance, of Logan County's heritage.

## Permanent Exhibits Include:



History of Local Coal Mining, Old Time School Room, County Outlaws and Lawmen,



Native American Artifacts, History of the Smith Family Doctors, Clothing, Needlework, and



Development and Demise of County Railroads.

## Logan County

### "Old Jail" Museum

202 North Vine Street  
Paris, Arkansas 72855



Site of the Last Legal Hanging in Arkansas

### Museum Hours:

Wednesday through Saturday

12:00 – 5:00 p.m.

479-963-3936

Like us on  @

Logancountymuseum

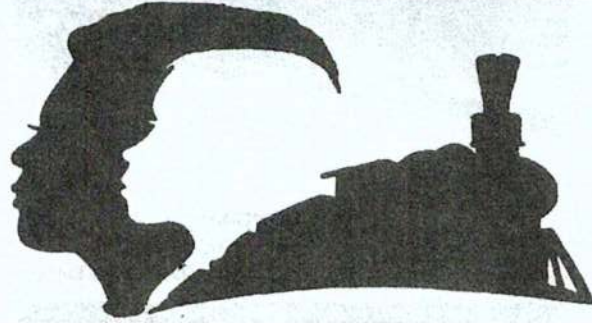
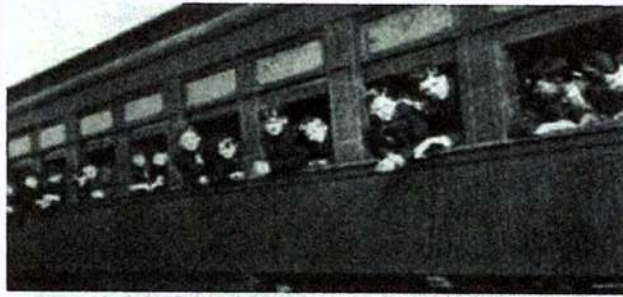
or email us @

logancomuseum@gmail.com

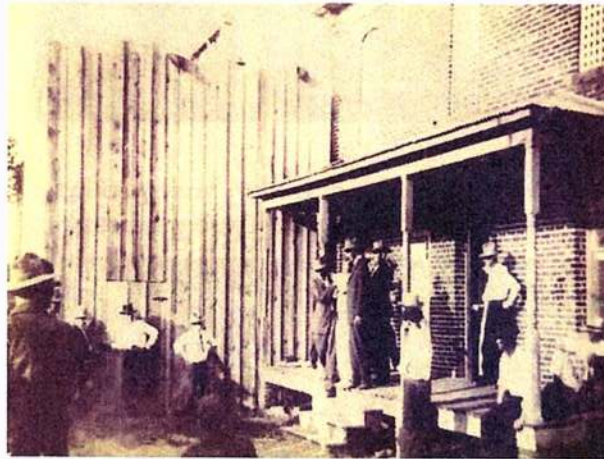
Jeanne S. Reynolds  
Executive Director/Curator



The picture on the front is the fourth Logan County Jail. The stones from the previous jail built in 1886 were used in the foundation, along with new brick concrete and steel. This two story duplex building is the largest of the four jails. The side with a street floor and basement was used as the residence for the jailkeeper and his family. The prisoner side, street floor and top floor, has its own entrance. Bids were accepted in 1903 and Anthony Hall received the contract, with his bid of \$5,500. The jail was located on a lot north of the town square, on the street leading to Roseville, with the town creek on the south side. The building was set on the upper half of the incline so that the jail section would be well above the street level. The property now has houses on all sides and faces Vine Street. Many jailers and their families lived in this jail and many prisoners passed through the solid steel door. One prisoner, Arthur Tillman, put this jail in national limelight on July 15, 1914. He is the last legal hanging in Arkansas, on the gallows beside the jail. In August, 1971, after sixty-seven years of service, the prison no longer met fire codes and was judged unsafe to house prisoners. An agreement was made to house prisoners in the Paris City Jail.



From New York to Logan County - History of the Orphan Train and its effect on Logan County.



Picture from the Stevens/Tillman Exhibit of Arthur Tillman, who never admitted his guilt, telling the crowd good bye from the jail porch.

The last County Jail was not to lose its place in history, thanks to a committee made up of Extension Homemakers' Clubs members. They obtained approval of County Judge J.V. "Jim" Ward in the fall of 1972, to convert the jail into a county museum. During the next few months, the Logan County Museum Association was organized. Operation and preservation of the building and its contents is still under the direction of this Association. Memberships are welcomed and open to all people with an interest in preserving the unique history of the jail and Logan County.

