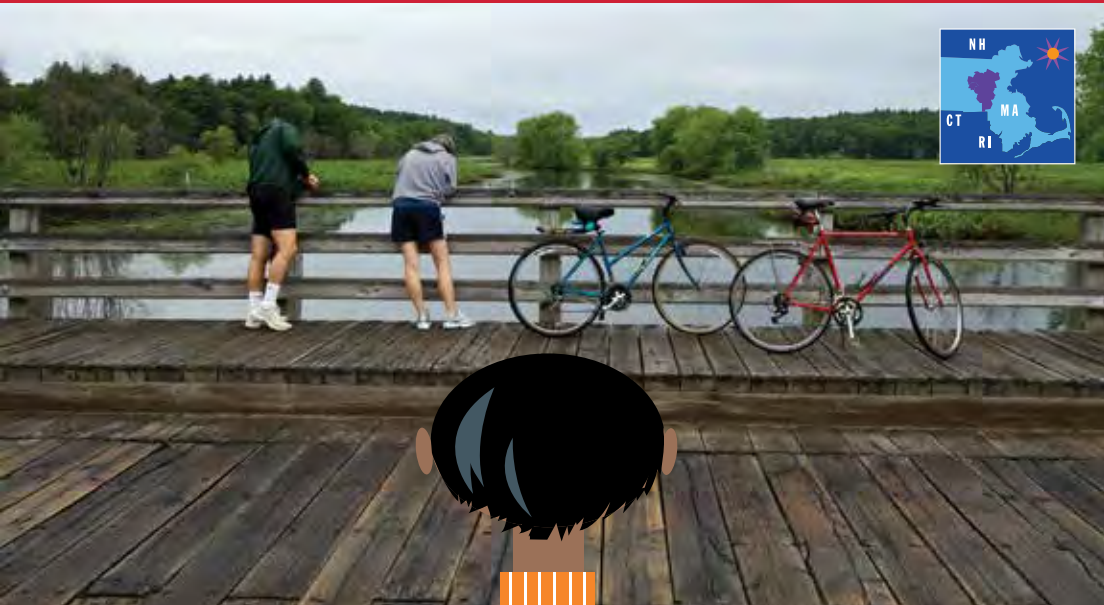


MetroWest

MASSACHUSETTS

2020
GUIDE

SHOPPING • FOOD/ DRINK • RECREATION • ARTS/CULTURE • ACCOMMODATIONS • SERVICES



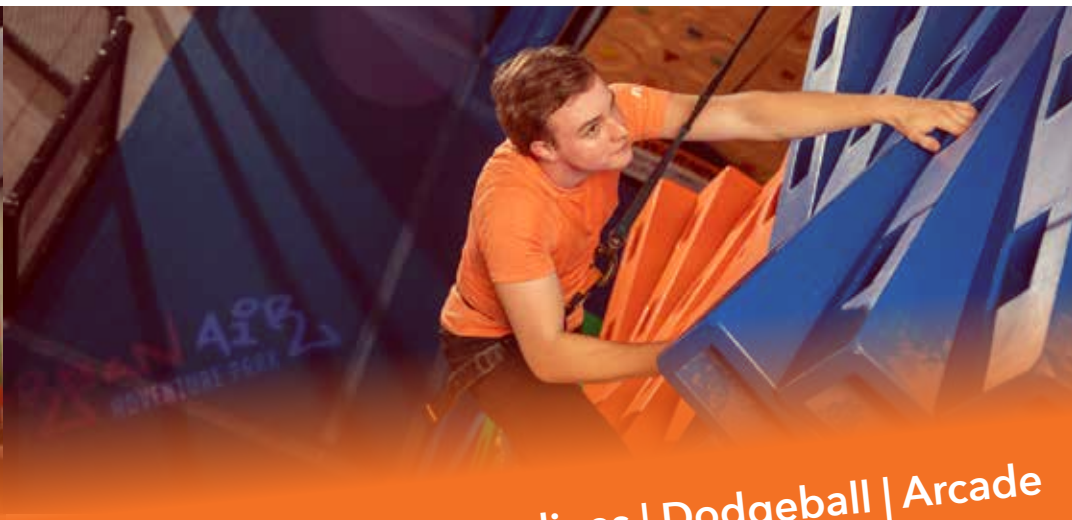
URBAN AIR
ADVENTURE PARK



MASSACHUSETTS
massvacation.com



MetroWest
Visitors Bureau



Sky Rider Coaster | Ropes Course | Climbing Walls | Warrior Course | Trampolines | Dodgeball | Arcade

THE ULTIMATE FAMILY ENTERTAINMENT DESTINATION!

PERFECT FOR ALL AGES & GROUP SIZES

URBAN AIR

ADVENTURE PARK

189 Mechanic St. Bellingham, MA 02019 | (508) 232-4604 | www.UrbanAirBellingham.com





delicious meals, **delivered**

With Wegmans Meals 2GO, we've made it even easier for you to get the food you love. Now you can order a variety of healthy cuisines right in the app, such as veggie crust pizza, sushi, salads and more!

Learn more at
wegmans.com/wegmans2GO



Order in the Meals 2GO app for carryout, curbside pickup or delivery



Contents

4 SHOPPING

10 ART / CULTURE

18 RECREATION

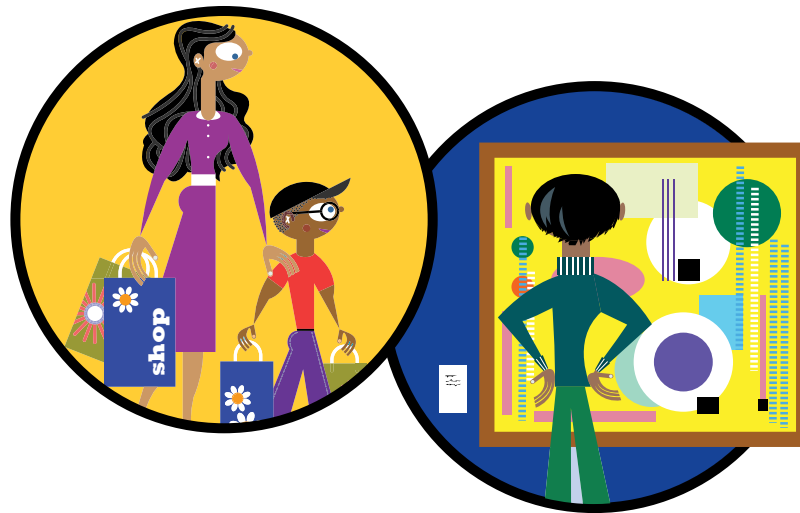
26 FOOD & DRINK

30 ACCOMMODATIONS

36 SERVICES

44 MOVING IN

Throughout this Guide, MetroWest Visitors Bureau members' listings are in color.



Urban Air Adventure Park in Bellingham, the ultimate family entertainment destination, is the official sponsor of the 2020 Guide to MetroWest. Cover photography: Sudbury Valley Trustees conserve and care for over 5000 acres of fields, forests, and farms in the 36 communities surrounding the Sudbury, Assabet, and Concord Rivers. Photo courtesy of Thomas Cooper courtesy of OARs. Discover extended-stay comfort and modern convenience at the new Residence Inn Boston Natick. Photo courtesy of Residence Inn Boston Natick and JS Photography.

The *Guide to MetroWest* is published annually by the MetroWest Visitors Bureau, 665 Franklin Street, Upper Level Framingham, MA 01702. 508-361-9881 Design: ninagarfinkle.com Illustrations: christopherjagmin.com

Funded by the Massachusetts Office of Travel & Tourism.



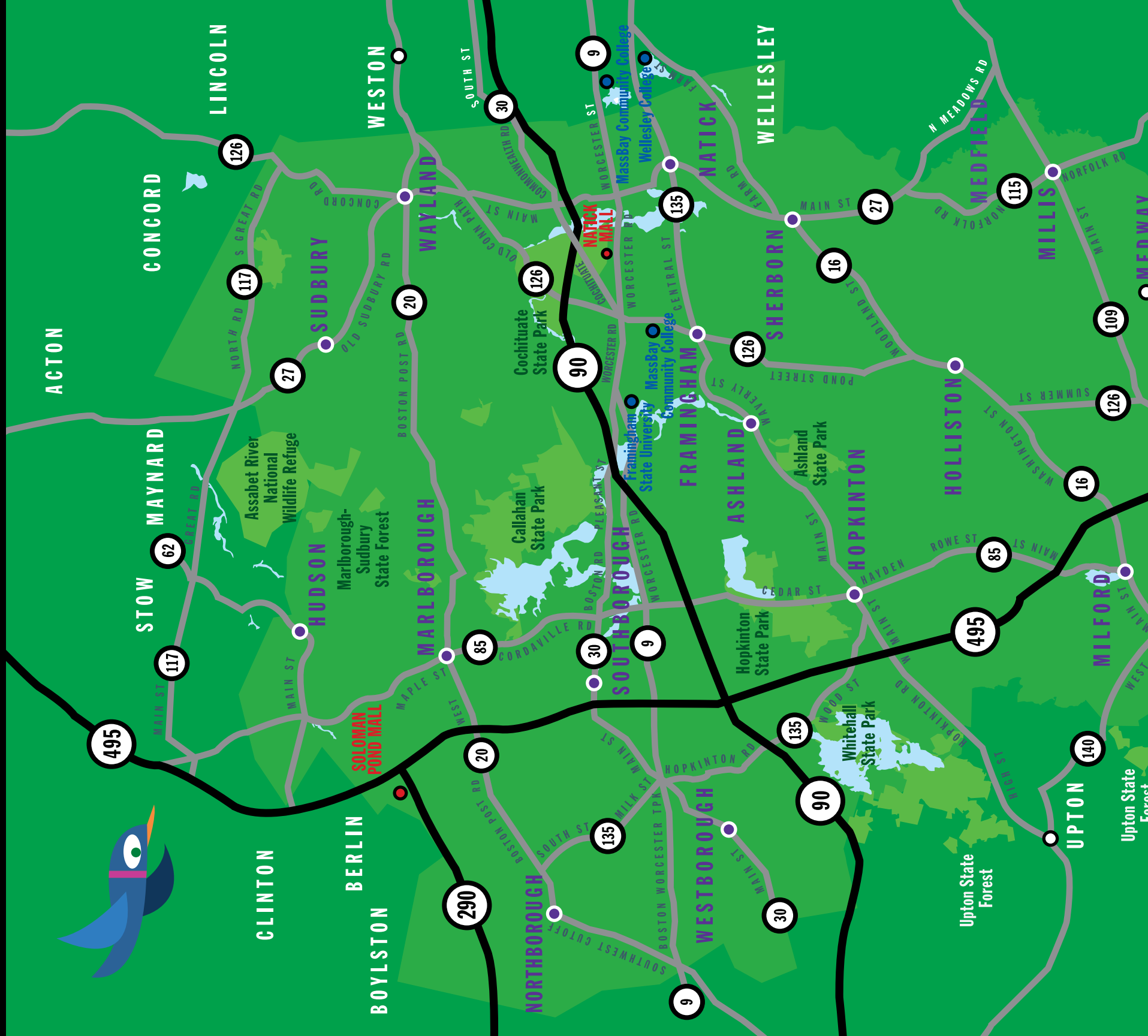
MetroWest Visitors Bureau

Welcome to MetroWest!

For centuries, MetroWest has been a diverse and thriving region offering tremendous opportunities for personal exploration and professional growth. That innovative spirit has kept our region at the forefront of burgeoning new industries—from craft beverages to biotech—even as we preserve our historic New England traditions and landscape. Set between the two largest cities in New England, our region offers the best of two worlds: the vibrant excitement of a city with thriving cultural amenities and corporate leaders, and rural natural beauty that is perfect for recreation and relaxation. Our unique mix of urban, suburban, and rural communities makes it easy for visitors to experience luxury shopping and country boutiques, haute cuisine and farm-to-table, conference centers and restful inns. With major arteries crisscrossing the region, you are never far from intriguing opportunities in MetroWest!



All Roads Lead to MetroWest





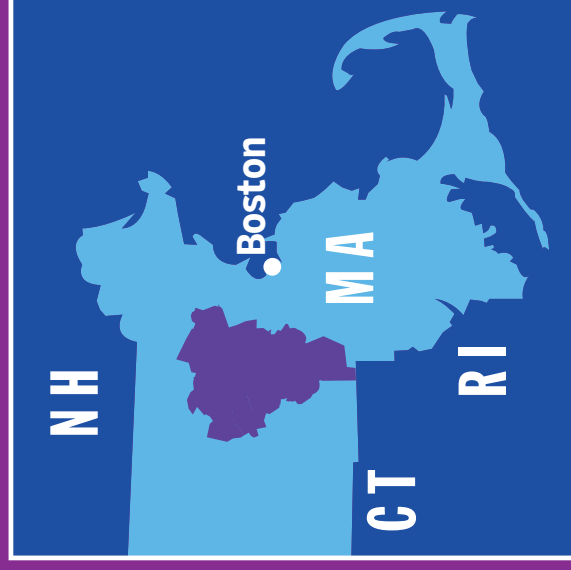
Driving: from there to here

IN LESS THAN ONE HOUR!

- Bellingham > downtown Providence, RI: 15 miles
- Eastern Natick > western Northborough: 18 miles
- Natick > Boston's Logan Airport: 20 miles
- Northborough > downtown Springfield: 60 miles
- I-90 / I-495 interchange > downtown Worcester: 12 miles
- Downtown Franklin > Downtown Marlborough: 23 miles
- Downtown Franklin > Cape Cod's Bourne Bridge: 50 miles

EASY ACCESS: TAKE INTERSTATES FROM OTHER STATES

- Hudson > New Hampshire border: 30 miles
- I-90 / I-495 interchange > downtown Providence: 35 miles
- Wayland > Kittery, ME: 70 miles





What's in store?

With such a wealth of retail offerings, it's easy to “spend” the day here.

Where else could you browse a quintessential country store and, minutes later, shop at New England's largest enclosed retail mall, with luxury brands available nowhere else in the state outside of Boston?

MetroWest is referred to as a shopper's world, and indeed, one of the nation's first outdoor malls, with the apt title Shoppers' World, anchors a three-square-mile shopping extravaganza along Route 9 that includes Natick Mall. Hundreds of national brand stores and local emporiums make shopping incomparable as you head west on Route 9 through Northborough. Solomon Pond Mall anchors the northern tip of the region, and Wrentham Village Premium Outlets anchor the southern tip. In between, you'll find specialty stores to suit every need and whim.

Leave the driving to the MWRTA, a user-friendly bus service that stretches from Marlborough's Solomon Pond Mall to Newton's MBTA station, where it's a ten-minute ride to Boston. It stops at all major MetroWest hotels, many town centers, and all along Route 9. Further south, GATRA's bus service links 28 communities, including the plentiful retail districts of Franklin, Milford, and Bellingham. See the Services section for transportation information.

Oil, spice, and everything nice—from The Little Shop of Olive Oils to New England's largest enclosed mall. Photos courtesy of Franklin Cultural Council and Natick Mall.



FARMERS MARKETS

Ashland Farmers Market

125 Front Street, Ashland 01721
ashlandfarmersmarket.org
Saturdays, June to October, 9am-1pm

Framingham Farmers Market

Centre Common, Edgell Road & Vernon Street
Framingham 01701
chooseframingham.com
Thursdays, mid June to mid October, 12-5:30pm

Franklin Farmers' Market

High and Main Streets, Town Common, Franklin
02038 · franklinfarmersmarketma.com
Fridays, June to October, 12-6pm

Hopkinton Farmers Market

Town Common, Route 135 at Ash Street,
Hopkinton 01748 · hopkintonfarmersmarket.com
Sundays, June to October, 1-5pm

Hudson Farmers' Market

Hudson Town Hall, 78 Main Street, Hudson 01749
Tuesdays, June 23 to September 22, 3:30-6:30pm

Marlborough Farmers Market

Union Common, 77 Main Street, Marlborough 01752
facebook.com/Marlborough-
Farmers-Market-306000149747102
Tuesdays, June to August, 3pm-6:30pm

Maynard Farmers' Market

Mill Pond Parking lot, Main Street, Maynard 01754
maynardfarmersmarket.com
Saturdays, June to September, 9am-1pm

Medway Farmer's Market

Choate Park, Medway 02053
facebook.com/themedwayfarmersmarket
Thursdays, June to September, 4-7pm

Milford Farmer's Market

Milford Water Company, 66 Dilla Street, Milford
01757 · milfordmafarmersmarket.wordpress.com
Saturdays, June to September, 9am-1pm

Natick Community Organic Farm

117 Eliot Street, Natick 01760 · 508-655-2204
natickfarm.org
Daily, year-round

Natick Farmers' Market

natickfarmersmarket.com
Saturdays 9am-1pm
Spring/Summer: Natick Common,
Intersection of Routes 27 & 135, Natick
Fall/Winter: Common Street Spirituality Center,
13 Common St, Natick

Wayland Farmers' Market

Russell's Garden Center, 397 Boston Post Road,
Wayland 01778
russellsgardencenter.com/html/farmersMarket
Summer/Fall: Wednesdays, June to Oct., 12-5pm
Winter: Saturdays, Jan.11 - Mar 14, 10am - 2pm.

Westborough Farmers' Market

57 West Main Street, Westborough 01581
eatfresh01581.com
Thursdays, June to September, 12-5pm

GENERAL SHOPPING

6 Bridges Gallery

77 Main Street, Maynard 01754 · 978-867-5209 www.6bridgesgallery.com

1854 Cycling Company

P.O. Box 3294, Framingham 01705 · www.1854cycling.com

Avenue C Design

1062 Edmands Road, Framingham 01701 · www.youravenuecdesign.com

Baldwin Hill Art & Framing

8 Court Street, Natick 01760 · 508-720-0310 www.baldwinhillframing.com

Bay State Commons

Union and Main Streets, Westborough 01581

Bedrock Comics

371 Worcester Road, Framingham 01701 · 774-427-9192 www.bedrock-comics.com

Big Picture Framing

99 Cedar Street, Milford 01757 · 508-634-0008 www.bigpictureframing.com/our-locations
1290 Worcester Street, Natick 01760 · 508-650-0075 www.bigpictureframing.com/our-locations

Bose

1245 Worcester Street, Natick 01760 · 508-647-4012 www.bose.com

Boston Ski & Tennis

400 Union Street, Westborough 01581 · 508-616-2024 www.bostonskindtennis.com

Cabela's

44 Highland Common, Berlin 01749 · 978-212-6200 www.cabelas.com

Calliope Paperie

1 North Main Street 01760 · 774-290-4321 www.calliopepaperie.com

Cost Plus World Market

Shoppers World, 1 Worcester Road, Framingham 01701 · 508-626-1529 www.worldmarket.com

Dragonfly's Quilt Shop

799 South Main Street, #17b, Bellingham 02019 · 508-360-6099 www.dragonflysquiltshop.com

Duck Soup

365 Boston Post Road, Sudbury 01776 · 978-443-3825 www.quackquackquack.com

Elsie Kaye Glassworks

3 Union Street, Westborough 01581 · 508-329-8517 www.elsiekaye.com

Emma's Quilt Cupboard & Sewing Center

12 Main Street, Franklin 02038 · 508-520-0234 www.emmasquiltcupboard.com

Fabric Place Basement

321 Speen Street, Natick 01760 · 508-655-2000 www.fabricplacebasement.com

Fiske's General Store

776 Washington Street, Holliston 01746 · 508-429-4041 www.fiskesgeneralstore.com

Five Crows Gallery & Handcrafted Gifts

Natick Center Cultural District · 41 Main Street, Natick 01760 · 508-653-2526 www.fivecrows.com
We offer handcrafted gifts from over 150 local, regional, and national artists. Custom orders are available and we offer free gift wrapping! We hope you will stop by during your visit to historic Natick Center.

Frame Shop & Gallery

5 Main Street, Natick 01760 · 508-651-1551 www.frameshop-gallery.com

building business, community & culture

DFI
Downtown Framingham, Inc.

Feel good in the fastest-growing urban center in the MetroWest

Downtown FRAMINGHAM

Visit us at:
www.DowntownFraminghamInc.org
@DowntownFraminghamInc

Facebook, Instagram, and Twitter icons.

Full Circle Arts

9 Middlesex Avenue, Natick 01760 • 276 Turnpike Road, Westborough 01581 • 508-651-0137
www.etsy.com/shop/fullcircleartsstudio
A nonprofit studio and retail shop that supports the creative abilities of artists and crafters with intellectual and developmental disabilities.

Hopkinton Jewelers

1 Clafin Commons, Hopkinton 01748 • 508-435-4737 www.facebook.com/HopkintonJewelers

Jane's Frames

11 East Central Street, Franklin 02038 • 508-528-3256 www.janesframes.com

Landry's Bicycles

790 Worcester Street, Natick 01760 • 508-655-1990 www.landrys.com

Microsoft Store – Natick Mall

1245 Worcester Street, Natick 01760 • 508-903-4500 www.microsoft.com/en-us/store/locations

Mill Village Plaza

365 Boston Post Road, Sudbury 01776 • www.facebook.com/MillVillageSudbury

Music Go Round

810 Worcester Street, Natick 01760 • 508-653-9300 www.musicgoroundboston.com

Natick Mall

1245 Worcester Street, Natick 01760 • 508-655-4800 www.natickcollection.com
Find something for every facet of your personality at New England's most diverse selection of places to shop and eat. With over 220 stores and restaurants, you are sure to find your *favorite label here!

Newbury Comics

Charles River Center, 253B Hartford Avenue, Bellingham 02019 • 508-966-0619
Solomon Pond Mall, 601 Donald Lynch Boulevard, Marlborough 01752 • 508-460-0872
Natick Mall, 1245 Worcester Street, Natick 01760 • 508-650-4911
www.newburycomics.com

Northborough Crossing

Shops Way, Northborough 01532 • www.northboroughcrossing.com

Panza Shoes

8 Union Ave, Framingham 01702 • 508-872-3334
www.panzashoe.com

A Piece of Heaven

312 Main Street, Hudson 01749 • 978-562-6100
www.apieceofheavenltd.com

Robjet's D'Art

1 North Main Street, Natick 01760 • 415-317-3240
www.robjetsd'art.com

Sally's Alley

470 Franklin Village Drive, Franklin 02038 • 508-520-3123
www.sallysalley.com

Serendipity

63B Main Street, Hudson 01749 • 978-562-7756
www.serendipityinudson.com

Shoppers World

1 Worcester Road, Framingham 01701 • 508-872-1257 www.shoppersworldma.com

Skinner Inc

274 Cedar Hill Street, Marlborough 01752 • 508-970-3232 www.skinnerinc.com



SKM Collection

419 Worcester Road, Framingham 01701 • 508-309-7758 www.skmcollection.com
SKM offers a wide selection of fashion jewelry, trendy clothing and fun accessories. Our number one goal is to make you look and feel good!

Solomon Pond Mall

601 Donald Lynch Boulevard, Marlborough 01752 • 508-303-0204 www.simon.com/mall
120 retailers, as well as restaurants, a carousel, and a 15-theater cinema.

Star Custom Framers

117 Great Road, #11a, Stow 01775 • 978-461-2155 www.starcustomframers.com

Swoon Women's Clothing

5 Walcott Street, Hopkinton 01748 • 508-497-9666 www.swooncentral.com

Uni-T

1245 Worcester Street, Suite 4048, Natick 01760 • 617-835-8888 www.shopuni-t.com

Vallee's Jewelers

68 Main Street, Franklin 02038 • 508-528-2300 www.valleesjewelers.com

Wild Birds Unlimited

215 Franklin Village Drive, Franklin 02038 • 508-541-6800 www.franklinma.wbu.com

Wayside Country Store

1015 Boston Post Road East, Marlborough 01752 • 508-481-3458 www.waysidecountrystore.com

Wrentham Village Premium Outlets

1 Premium Outlet Boulevard, Wrentham 02093 • 508-384-0600 www.premiumoutlets.com

Yankee Candle

1245 Worcester Street (Natick Mall), Natick 01760 • 508-650-5300 www.yankeecandle.com

**Simon's Furniture**

8 Summer Street, Franklin 02038 • 508-528-0501 www.simonfurniture.com

Weston Nurseries

93 East Main Street, Hopkinton 01748 • 508-435-3414 www.westonnurseries.com
Known throughout the Northeast for providing exceptional plants and expert advice about your garden and landscaping. We are open year-round and offer great gifts for the gardener!

RETAIL FOOD & DRINK**Assabet Village Food Cooperative**

54 Main Street, Suite 205, Maynard 01754 • www.assabetvillagecoop.com

Bacon's Wine & Spirits

234 Washington Street, Hudson 01749 • 978-562-6650 www.baconsprits.com

624 Waverly Street, Framingham 01702 • 508-872-6650

308 Main Street, Northborough 01532 • 508-393-2134

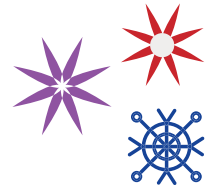
Party and event planning, catering and bartending, wine cellar selection, special orders and beverage-finding service, do-it-yourself wine tastings. One of the best selections of Portuguese brandies, aguardentes, and liqueurs.

Ben & Jerry's Natick Scoop Shop

1265 Worcester Road, Natick 01760 • 508-650-5400 www.benjerry.com/natick

Boston Nut Roasters

7 Hilldale Road, Ashland 01721 • 508-450-4345

**FOR THE HOME & DORM****Aubuchon Hardware**

240 Cottage Street, Franklin 02038 • 508-528-8484 www.aubuchon.com

Fabric Place Basement

321 Speen Street, Natick 01760 • 508-655-2000 www.fabricplacebasement.com

Giuberti Décor

381 Worcester Road, Framingham 01701 • 888-793-3267 www.giubertidecor.com

Home Goods

400 Cochituate Road, Framingham 01701 • 508-872-6522 www.homegoods.com

18 Lyman Street, Westborough 0158 • 508-870-1362 www.homegoods.com

Jordan's Furniture

1 Underprice Way (Route 9), Natick 01760 • 508-424-0088 www.jordans.com

Landscape Depot

57 Dilla Street, Milford 01757 • 508-478-9100 www.landscapedepotssupply.com

350 Irving Street, Framingham 01702 • 508-620-2988 www.landscapedepotssupply.com

Mary's Indoor Garden & Plants

Fiske's General Store, 776 Washington Street, Holliston 01746 • 508-259-4308 www.marygreendale.com

New England Bonsai Gardens

914 South Main Street, Bellingham 02019 • 508-883-2842 www.nebonsai.com

Renewal by Andersen

30 Forbes Road, Northborough 01532 • 508-351-2236 www.renewalbyandersen.com



five crows
Gallery & Handcrafted Gifts

Mon-Fri 10-5
Thurs 10-7
Sat 10-5

*Create * Share * Enjoy*





41 Main Street, Natick Center Cultural District, 508-653-2526
fivecrows.com

The Cake Bar

17 East Central Street, Franklin 02038 • 508-553-8700 www.thecakebaronline.com

The Candy Cottage

32 Central Street, Holliston 01746 • 508-429-5544 www.thecandycottage.biz

Chocolate Therapy

60 Worcester Road, Framingham 01702 • 508-875-1571 www.ctsweetremedies.com

Crafted

400 Washington Street, Holliston 01746 • 508-429-1931 www.crafted-ma.com/#craftbeer

Elizabeth's Bagels

456 West Central Street, Franklin 02038 • 508-541-3988 www.elizabethsbagels.com

Fifth Avenue Liquors

235 Old Connecticut Path, Framingham 01701 • 508-872-7777 www.fifthaveliquor.com
20 Milliston Road, Millis 02054 • 508-376-6056

Green Mountain Chocolates

1 Rosenfeld Drive, Hopedale 01747 • 508-473-9060, 508-520-7160 www.greenmountainchocolate.com
835 West Central Street, Franklin 02038

Harvard Sweet Boutique

25 South Street, Hudson 01749 • 978-562-5938 www.harvardsweetboutique.com

Hebert Candies

574 Hartford Turnpike (Rt. 20), Shrewsbury 01545 • 508-842-5583 www.hebertcandies.com

Hills Home Market

413 River Road, Hudson 01749 • 978-567-1402 www.hillshomemarket.com

Hopkinton Wine & Spirits

77 West Main Street, Hopkinton 01748 • 508-435-1292 www.hopkintonwineandspirits.com

Julio's Liquors

140 Turnpike Road, Westborough 01581 • 508-366-1942 www.juliosliquors.com

Mullahy's Artisan Cheeses

63 Main Street, Hudson 01749 • 508-570-8068 www.mullahys.com

Outpost Farm

216 Prentice Street, Holliston 01746 • 508-429-5244 www.outpostfarm.net

Paired, Poured, and Plated

290 West Main Street, Northborough 01532 • 508-466-7786 www.pairedpouredplated.com

Roche Bros.

6 Milliston Road, Millis 02054 • 508-376-2091 www.rochebros.com
150 West Central Street, Natick 01760 • 508-655-5540 www.rochebros.com
439 Boston Post Road, Sudbury 01776 • 978-443-3575 www.rochebros.com
1100 Union Street, Westborough 01581 • 508-836-3600 www.rochebros.com
Share in our love of food by shopping our deli, bakery, produce, cheeses, meats, seafood, and groceries.
Full catering menu and service for events of any size.

Tilly & Salvy's Bacon Street Farm

100 Bacon Street, Natick 01760 • 508-653-4851 www.baconstreetfarm.com

Total Wine & More

Cloverleaf Mall, 321 Speen Street, Natick 01760 • 508-651-5210 www.totalwine.com



What you'll find in Ashland, MA:

			
Great People	Strong Community	Beautiful Scenery	Fun Events

Plan your visit to Ashland today!

WWW.ASHLANDMASS.COM [@ASHLANDMASS](https://twitter.com/ASHLANDMASS) [f TOWNOFASHLANDMA](https://www.facebook.com/TOWNOFASHLANDMA)

FRANKLIN
More than you imagined!

Visit Downtown Franklin, MA
Your destination for shopping, restaurants, theater, history and so much more!!
There is ALWAYS something fun happening in Franklin!

Working Together to Create a Vival Downtown

FRANKLIN DOWNTOWN PARTNERSHIP

The Franklin Downtown Partnership
9 East Central Street Franklin MA 02038
(774) 571-3109
www.FranklinDowntownPartnership.org

Find us on

[f](https://www.facebook.com/franklindowntownpartnership) [i](https://www.instagram.com/franklindowntownpartnership) [t](https://www.twitter.com/franklindowntownpartnership)



The Vin Bin

91 Main Street, Marlborough 01752 • 508-480-9463 www.thevinbin.com
 22 South Street, Hopkinton 01748 • 508-435-9463 www.thevinbin.com
 154 Turnpike Road, Southborough 01772 • 508-485-8884 www.thevinbin.com
 Brews and spirits, cheeses, gifts, weekly tastings.

Wegmans Food Markets, Inc.

1245 Worcester Street, Natick Mall 01760 • 508-960-0100 www.wegmans.com
 9102 Shops Way, Northborough 01532 • 508-970-1200
 For meals to go (to eat in or out), there's a Market Café, sushi bar, pizza and sub shop, and dozens of hot, prepared entrees and sides. Full wine, liquor, and beer shop, kosher deli, butcher, patisserie, Nature's Marketplace, and Burger Bar in Natick location.

Whole Foods

575 Worcester Road, Framingham 01701 • 508-628-9525 www.wholefoodsmarket.com/stores/framingham
 536 Boston Post Road, Sudbury 01776 • 508-358-7700 www.wholefoodsmarket.com/stores/sudbury
 442 Washington Street, Wellesley 02482 • 781-235-7262 www.wholefoodsmarket.com/stores/wellesley

Woodville Maples

217 Wood Street, Hopkinton 01748 • 508-341-5108 www.woodvillemaples.com

Yummy Mummy Bakery

72 East Main Street, Westborough 01581 • 508-366-4200
www.yummymummybrownies.com



VISIT *Marlborough*

Stay, eat, relax and be entertained in
Marlborough, MA



visit-marlborough.com



Creative impulses

Our centuries-old spirit of innovation is the foundation of a rich cultural community.

We offer an exciting array of visual and performing arts, world-renowned curated collections, and grassroots artistic endeavors, all supported by local cultural councils and enthusiastic patronage.

Inspired by our rich traditions, we keep one foot in the past while we move forward. Here, arts and culture enthusiasts preserve the oldest New England venues while enjoying the most modern performance facilities. Historic homes dating to the Salem witch trials are within blocks of the Space-Age McAuliffe Challenger Center. Botanic gardens feature the oldest species of native plants; concert halls showcase emerging performers.

Art and artifacts are our treasures: from sculpture parks to stamp exhibits, from bluegrass festivals to battlefield re-enactments, from watercolor classes to World War II's rarest memorabilia, from Russian icons to recycled objects d'art.

Plan a trip in MetroWest and put our past in your future.

Our cultural assets journey us to the past and encourage future learning. Top photo: The Discovery Museum, courtesy of Jessica Cronin Photography. Bottom photo: The American Heritage Museum.

PERFORMING ARTS

Allegro Music School

P.O. Box 46, Natick 01760 • 508-655-3733 www.allegromusic.org

Amazing Things Arts Center

160 Hollis Street, Framingham 01702 • 508-405-ARTS (2787) www.amazingthings.org
Bringing together a diverse community of artists, arts supporters and arts appreciators of all ages, cultures and interests to experience the transformational power of rich and varied art forms.

Boston Bluegrass Union

PO Box 650061, West Newton 02465 • 617-782-2251 www.bbu.org
The Boston Bluegrass Union is a performing arts association based in the Boston area. We have over 38 years of presenting bluegrass concerts, festivals and educational activities.

Center for Arts and Wellness

125 Turnpike Road, Suite 10, Westborough 01581 • 508-561-4334 www.centerforartsandwellness.com.

The Black Box, Franklin Performing Arts Company

15 West Central Street, Franklin 02038 • 508-528-3370 www.theblackboxonline.com.

Center for the Arts in Natick (TCAN)

14 Summer Street, Natick 01760 • 508-647-0097 www.natickart.org
TCAN is one of the best-loved concert venues in MetroWest, where national acts like Peter Wolf, Joan Osborne, Paula Poundstone, Tom Rush, or The Smithereens perform. A busy calendar of events includes theatre, family concerts, open mike nights, and arts education programs.

Centre Music House

18 Main Street, Framingham 01702 • 508-875-0909 www.centremusic.com
A local family-owned and operated music studio and store serving Framingham and the MetroWest area for over 40 years. Specializing in private lessons for all ages, we provide an interactive and creative learning environment that is comfortable, fun, and professional.

Charles River Sinfonietta

58 Union Street, Millis 02054 • 508-376-4761

Claflin Hill Symphony Orchestra Inc.

208 Main Street, Milford 01757 • 508-478-5924 www.claflinhill.org

Commonwealth Shakespeare Company

231 Forest Street, Babson Park, Wellesley 02457 • 617-426-0863 www.commshakes.org

Dean College

99 Main Street, Franklin • 508-541-1605 www.dean.edu/Academics/Performance
Season and custom ticket packages for theater and dance performances in the Main Stage and the Guidry Center.

Drama Kids of Metro West

19 Dean Avenue, Franklin 02038 • 617-391-0369 www.dramakids.com

Encore Music Academy and Recording Studios

3 Bent Street, Franklin 02038 508-533-7700 www.encoremusicacademy.net
352 Village Street, Millis 02054 508-376-2776 www.encoremusicacademy.net

Enter Stage Left Theater

98 Hayden Rowe Street, Hopkinton 01748 • 508-435-9222 www.hopartscenter.org
The resident theater of Hopkinton Center for the Arts, ESL provides quality theater education for all ages and offers a wide array of 12 productions annually to MetroWest audiences looking for a great, affordable theater experience.

Exsultet!

725 Washington Street, Holliston 01746 • 781-249-9534 www.exsultet.us

Exsultet! is an auditioned women's chorus performing a repertoire of choral literature spanning musical periods and cultures. The ensemble is comprised of 14 singers and is in residence at First Congregational Church in Holliston.

Framingham Community Theatre

3 Maple Street, Framingham 01702 • 508-875-5554 www.pacmetrowest.org

Franklin School for the Performing Arts-Franklin

38 Main Street, Franklin 02038 • 508-528-8668 www.fspaonline.com

Ghost Light Players of MetroWest

29 Fontaine Street, Marlborough 01752 • Performances: 37 High Street, Marlborough 01752
508-263-0052 www.ghostlightplayers.com

Greater Milford Ballet Company

28 Bellingham Street, Mendon 01756 • 508-473-3354 www.greatermilfordballetcompany.com

Heritage Chorale

P.O. Box 1335, Framingham 01701 • 508-270-3999 www.heritagechorale.org

Holliston's Washington Street Players

Performing at 703 Washington Street, Holliston 01746 • www.washingtonstreetplayers.org

Hopkinton Center for the Arts

98 Hayden Rowe Street, Hopkinton 01748 • 508-435-9222 www.hopartscenter.org
The Hopkinton Center for the Arts provides visual and performing arts programs for individuals of all ages and abilities. Each year, we present many juried and community art exhibits, concerts, theater performances, art sales, classes, and workshops.

Indian Hill Music

36 King Street, Littleton 01460 • 978-486-9524 www.indianhillmusic.org

LiveARTS—First Universalist Society of Franklin

262 Chestnut Street, Franklin 02038 • 508-528-5348 www.fusf.org/livearts

MetroWest Harmony Chorus

www.metrowestharmony.com

MetroWest Symphony Orchestra

In residence at Hopkinton High School, Hopkinton 01742 • 508-686-3100 www.metrowestsymphony.org

Milford Performing Arts Center

150 Main Street, Milford 01757 • 508-473-1684 www.milfordpac.org

Pakachoag Music School of Greater Worcester

203 Pakachoag Street, Auburn 01501 • 508-791-8159 www.pakmusic.org

Performing Arts Center of MetroWest

3 Maple Street, Framingham 01702 • 508-875-5554 www.pacmetrowest.org

Rhapsody Music & Art Center

138 Hartford Avenue, Hopedale 01747 • 508-733-2299 www.musictogetherofblackstonevalley.com

Rivers Edge Arts Alliance

155 Apsley Street, Hudson 01749 • 978-562-1646 www.upwitharts.org

School of Rock Natick

217 West Central Street, Natick 01760 • 508-810-0105 www.natick.schoolofrock.com
More than just lessons, our performance-based music education takes students from the lesson room to the stage.
Guitar • Bass • Keys • Drums • Vocals

Stacey Peasley Children's Music

Natick 01760 • 617-861-7477 www.staceypeasley.com

Strike Up The Band

5 Washington Street, Natick 01760 • 508-655-9223 www.strikeuptheband.com

Symphony Pro Musica

14 Main Street, Hudson 01749 • 978-562-0939 www.symphonypromusica.org
 SPM enriches the cultural life of our communities with live performances of the best symphonic repertoire, opera, and choral music. SPM showcases area instrumentalists and gifted young soloists.

Umbrella Community Arts Center

40 Stow Street, Concord 01742 • 978-371-0820 www.theumbrellaarts.org

Voices of MetroWest

P.O. Box 497, Natick 01760 • www.voicesofmetrowest.com

Walnut Hill School for the Arts

12 Highland Street, Natick 01760 • 508-653-4312 www.walnuthillarts.org
 Walnut Hill School for the Arts offers a unique combination of academic rigor and artistic excellence for day and boarding students grades 9-12. Performances and exhibitions are open to the public, many free of charge.

Wellesley College

106 Central Street, Wellesley 02481 • 781-283-1000
www.wellesley.edu/events
 Offering visual art, theater, film, lectures, concerts, visiting artists, lectures, and other cultural events to the public throughout the year.

Wellesley Symphony Orchestra

Concerts at 50 Oak Street, Wellesley 02457 • 781-235-0515 www.wellesleysymphony.org



VISUAL ARTS

6 Bridges Gallery

77 Main Street, Maynard 01754 • 978-897-3825 www.6bridgesgallery.com

60 Nobscot Gallery and Showroom

60 Nobscot Road, Sudbury 01776 • 948-440-8066 www.60nobscot.com

Art and Frame Emporium

18 Lyman Street, Westborough 01581 • 508-366-5650 www.artandframeemporium.com

Arts Wayland & @theW Gallery

57 Andrew Avenue, Wayland 01778 • 774-421-9211 www.artswayland.com

ArtSpace Maynard

63 Summer Street, Maynard 01754 • 978-897-9828 www.artspacemaynard.com

Blue Skies Studios

43 Broad Street, Suite B307, Hudson 01749 • 508-357-8855 www.blueskiesstudios.org

Ceramics Garage

914-227-2090 • www.theceramicsgarage.com

Community Kiln

26 Park Street, Framingham 01702 • 508-309-4604 www.brickstack.org
 A program of SMOC open to all, Community Kiln at Brick Stack Arts Center offers classes and workshops for beginners through more advanced students of all ages to actively engage in the joy of ceramics.

Concord Center for the Visual Arts

37 Lexington Road, Concord 01742 • 978-369-2578 www.concordart.org
 Where art is for everyone! Concord Arts' happenings include engaging exhibitions, classes, workshops, and special programs. Our teachers are among the best, and our demos, lectures, films and trips provide something for everybody.

Damianos Photography & Publishing

1630 Concord Street, Framingham 01701 • 508-872-4880 www.damianosphotography.com
 Distinctive photography of architecture, interiors, products, and people for business. Services include digital image retouching (our images or yours), consulting and classes, in-house Giclée printing, and book publishing.

Danforth Art Museum at Framingham State University

14 Vernon Street, Framingham 01701 • 508-215-5110 www.danforth.framingham.edu
 Focusing on American art from 19th century to present day, Danforth Art Museum has a permanent collection of 3,500 works of art and offers studio art courses, workshops, and artist lectures. Exhibitions focus on historical American art and contemporary, regional artists.

DZian Gallery

1245 Worcester Street (Natick Mall), Natick 01760 • 508-655-6522 www.dzian.net

Expressions Art Bar

162 Cordaville Road, Southborough 01772 • 508-475-5664 www.expressionsartbar.com

Fine Arts Theatre Place

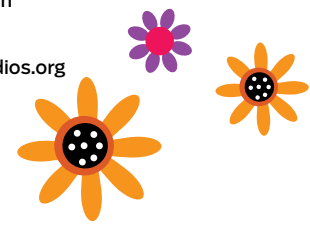
19 Summer Street, Maynard 01754 • 978-298-5626 www.fineartstheatreplace.com

Franklin Art Association

279 East Central Street, PMB#289, Franklin 02038 • www.franklinart.org
 Established in 1971, the Franklin Art Association is a 501(c)3 non-profit organization dedicated to promoting fine art, painting, and photography. We provide ongoing educational programs with demonstrations, workshops, and exhibit opportunities.

Franklin Sculpture Park

Panther Way, Franklin 02038 www.facebook.com/pages/franklin-sculpture-park/606584309401019



HOPKINTON CENTER FOR THE ARTS





Learn.
Create.
Discover.
At the
HCA.

- CLASSES FOR ALL AGES
- PRIVATE MUSIC LESSONS
- PRIVATE VOICE LESSONS
- OPEN MIC NIGHTS
- VACATION WEEK PROGRAMS
- JAZZ JAM
- DANCE STUDIO
- CERAMICS STUDIO
- GALLERY EXHIBITS
- CHILDREN'S EVENTS
- BIRTHDAY PARTIES
- EVENT RENTALS



98 HAYDEN ROWE ST. (RTE. 85) HOPKINTON, MA 01748
 (508) 435-9222 | WWW.HOPARTSCENTER.ORG

Full Circle Arts

9 Middlesex Avenue, Natick 01760 • 276 Turnpike Road, Westborough 01581 • 508-745-3732 www.jri.org
 276 Turnpike Road, Westborough 01581 • 508-745-3732 www.jri.org
 A program of Justice Resource Institute, this nonprofit studio and retail shop supports the creative abilities of artists and crafters with intellectual and developmental disabilities.

Holliston Mill Artists

24 Water Street, Holliston 01746 • 508-395-5692 www.hollistonmill.com

Jordan's IMAX

1 Underprice Way (Route 9), Natick 01760 • www.jordans.com/imax

Jorie Designs Gallery & Gifts

1017 Boston Post Road, Marlboro 01752 • www.joriedesignsgg.com

Mazmanian Gallery at Framingham State University

McCarthy Center, 100 State Street, Framingham 01702 • 508-620-1220 www.framingham.edu/art-and-music
 A gallery located at Framingham State University that showcases well known and local artists, as well as student and faculty art work.

Mendon Twin Drive-in

35 Milford Street, Mendon 01756 • 508-473-1092
www.mendondrivein.com

New Art Center

61 Washington Street, Newton 02460
 617-964-3424 www.newartcenter.org

In a setting that is welcoming and conveniently located, we offer an inclusive, multi-generational approach to art education that serves 2,500 children, teens, and adults at all skill levels annually.

**Paradise City Arts Festival**

Royal Plaza Trade Center, Marlborough 01758 • 800-511-9725 www.paradisecityarts.com
 Metro Boston's award-winning fair of fine and functional art features 175 extraordinary artists from every corner of the country showing the very best in American craftsmanship. Takes place March and November annually.

Post Road Arts Center

1 Boston Post Road East, Marlborough 01752 • 508-485-2580 www.postroadartcenter.com

Renjeau Galleries

79 Worcester Street, Natick 01760 • 508-655-5121 www.renjeau.com

Saxonville Studios Inc.

1602 Concord Street, Framingham 01701 • 508-877-4730 www.saxonvillestudios.com

Spaightwood Gallery

120 Main Street, Upton 01568 • 508-529-2511 www.spaightwoodgalleries.com
 We are the largest gallery in New England, featuring 9000 works, mostly on paper, including original prints from the late 15th century to the present by old, modern, and contemporary masters.

Sudbury Art Association

P.O. Box 192, Sudbury 01776 • www.sudburyart.com

Susie's Stories

www.susiestories.com

Local author Susie Rich offers five books, poetry, and additional works designed to educate, entertain, and promote a positive image of self-esteem, confidence and the importance of community to both young readers and adults.

Wayland Art Center

14 East Plain Street, Wayland 01778 • 508-653-8251

MetroWest Visitors Bureau
PRESENTS
ARTS, MUSIC & FOOD TRUCK FESTIVAL



Saturday, June 13 11am–4pm
 Bowditch Athletic & Cultural Complex, Framingham

**A day-long celebration of arts, live music, family activities,
 and gastronomic delights**

100 exhibitors and vendors! • free parking and shuttles

Info: www.metrowestvisitors.org

FRANKLIN

More than you imagined!









Arts Happen Here!

Your destination for shopping,
 restaurants, theater, history and
 so much more!
 There is ALWAYS something fun
 happening in Franklin!

www.franklinculture.org

Find us on








FRANKLIN

More than you imagined!

Explore our open space, enjoy our eateries, browse our shops and delight in our arts, culture and history!



 @TOFranklinMA
 @OfficialTownofFranklin
 @TownofFranklinMA

There is ALWAYS something fun happening in Franklin! Visit us and find out more at www.franklinma.gov www.franklinculture.org



Arts Happen Here!

HISTORY

American Heritage Museum

568 Main Street, Hudson 01749 • 978-562-9182 www.americanheritagemuseum.org
A military history museum with over 100 major artifacts on display from every major US conflict from World War One through the War on Terrorism.

Concord Tour Company

48 Monument Square, Concord 01742 • 978-399-8229 www.concordtourcompany.com

Dedham Historical Society & Museum

612 High Street, Dedham 02027 • 781-326-1385 www.dedhamhistorical.org

Dwight-Derby House

7 Frairy Street, Medfield 02052 • 508-359-6565 www.dwightderbyhouse.org

The Fairbanks House

511 East Street, Dedham 02026 • 781-326-1170 www.fairbankshouse.org

Faulkner Homestead

5 High Street, Acton 01720 • www.ironworkfarm.org

Framingham History Center

16 Vernon Street, Framingham 01701 • 508-872-3780 www.framinghamhistory.org
Our rich offerings of programs, exhibitions, and community celebrations build excitement for local history, citizenship, and pride of place now and for generations to come.

Franklin Historical Museum

80 West Central Street, Franklin 02038 • www.franklinhistoricalmuseum.com
Displays include locally discovered Native American arrowheads and stone implements, antique tools from Franklin's industrial-age past, and an extensive collection of Civil War artifacts.

Gropius House & Codman Estate, Historic New England

68 Baker Bridge Road and 34 Codman Road, Lincoln 01773 • 781-259-8098
www.historicnewengland.org/historic-properties/homes

Hosmer House

299 Old Sudbury Road, Sudbury 01776 • 978-443-6722

Louisa May Alcott's Orchard House

399 Lexington Road, Concord 01742 • 978-369-4118 www.louisamayalcott.org

Marlborough Historical Society & Peter Rice Homestead

377 Elm Street, Marlborough 01752 • www.historicmarlborough.org
The Marlborough Historical Society is an all-volunteer, nonprofit organization dedicated to historic preservation, education, and celebration in Marlborough. Free monthly meetings and the city's historical archives are held in the Peter Rice Homestead and Museum.

Medfield Historical Society

6 Pleasant Street, Medfield 02052 • 508-359-4773 • www.medfieldhistoricalsociety.org

Medway Historical Society

223 Main Street, Medway, 02053 • 508-533-7222 • www.medwayhistoricalsociety.org

Old Sturbridge Village

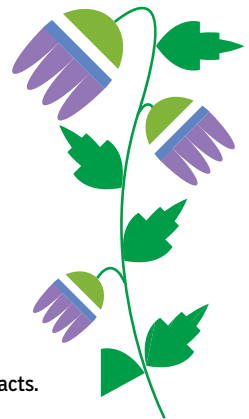
1 Old Sturbridge Village Road, Sturbridge 01566 • 800-733-1830 www.osv.org

Olde Marlborough Inc.

255 Main Street, Marlborough 01752 • 508-579-0658 www.oldmarlborough.org

Plymouth 400

6 Main Street Extension, Post Office Square, Plymouth 02360 • 508-812-2020 www.Plymouth400inc.org
For the Plymouth anniversary in 2020, our exhibitions, programs, festivals, and arts and entertainment highlight the contributions and traditions that resulted from the interaction of the Wampanoag and English peoples.



Sherborn Historical Society Museum19 Washington Street, Sherborn 01770 • 508-653-0560 www.sherbornma.org**Southborough Historical Society**25 Common Street, Southborough 01772 • www.southboroughhistory.org**Thayer Homestead**2B Oak Street, Medway 02053 • 508-321-4800 www.townofmedway.org**Westborough Historical Society**13 Parkman Street, Westborough 01581 • 508-898-0975 www.westborough.com**MUSEUMS & COLLECTIONS****American Heritage Museum**568 Main Street, Hudson 01749 • 978-562-9182 www.americanheritemuseum.org

See "History" for information.

Concord MuseumLexington Road, Concord 01742 • 978-369-9763 www.concordmuseum.org

The museum houses one of the oldest and most treasured collections of Americana in the country. It's the gateway to Concord's remarkable revolutionary and literary history, from the first shots in the battle for American independence to the legacy of Emerson and Thoreau.

Davis Museum at Wellesley College106 Central Street, Wellesley 02481 • 781-283-2051 www.davismuseum.wellesley.edu

Distinguished permanent collections including paintings, sculptures, works on paper, photographs, and decorative objects, from antiquity to the contemporary moment; dynamic temporary exhibitions engage visitors in looking anew at the visual arts.

deCordova Sculpture Park and Museum51 Sandy Pond Road, Lincoln 01773 • 781-259-8355 www.decordova.org

The Sculpture Park is a constantly changing landscape of more than 60 large-scale, outdoor, and modern sculpture and site-specific installations. Inside, the Museum features a robust slate of rotating exhibitions and innovative interpretive programming.

Discovery Museum177 Main Street, Acton 01720 • 978-264-4200 www.discoveryacton.org

Discovery Museum is a hands-on museum blending science, nature, and play. Our expanded, completely renovated, and accessible museum includes new STEAM experiences and reimagined favorites that encourage exploring and experimenting by all.

Fatima Shrine

101 Summer Street, Holliston 01746 • 508-429-2144

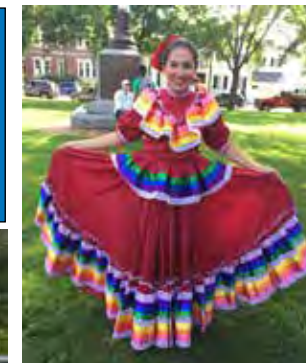
Fruitlands Museum102 Prospect Hill Road, Harvard 01451 • 978-456-3924 www.fruitlands.org**Holliston Historical Society**547 Washington Street, Holliston 01746 • 508-429-5795 www.hollistonhistoricalsociety.org**Museum of Russian Icons**203 Union Street, Clinton 01510 • 978-598-5000 www.museumofrussianicons.org

Spanning six centuries, our collection of more than 500 Russian icons and artifacts is the largest of its kind in North America and one of the largest private collections outside Russia.

Natick Historical Society Museum58 Eliot Street, Natick 01760 • 508-647-4841 www.natickhistoricalsociety.org**Old Sturbridge Village**1 Old Sturbridge Village Road, Sturbridge 01566 • 800-733-1830 www.osv.org**Annual Events**

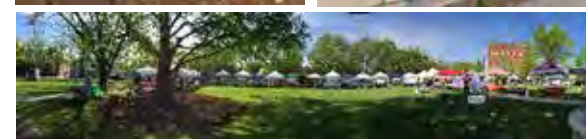
Boston Marathon - April
 ArtWeek - April
 NAOS Juried Art Show - May
 Holi Festival - May
 Natick Farmers Market
 Every Saturday 9-1 pm
 Concerts on the Common
 June - August
 Natick Nights, Every Thurs. 5-8 pm
 June & July
 4th of July Festivities - July
 Artwalk - 3rd Thurs. in July
 Multi-Cultural Day - August
 Natick Days - September
 Spooktacular - October
 Natick Artists Open Studios - Oct.
 Mass. Innovation Nights - Fall
 Small Business Sat. - November
 Holiday on the Common. - Nov.
 Holiday Window Contest - Dec.

Natick Center
 Cultural District is
 a proud sponsor
 of arts, culture &
 community
 events.



Visit
natickcenter.org

For a full calendar
 of events &
 walking tours of
 Natick Center!



Natickcenter.org

20 Main Street, Suite 208

Natick, MA 01760

508.650.8848

info.natickcenter@gmail.com

Spellman Museum of Stamps & Postal History

235 Wellesley Street at Regis College, Weston 02493 • 781-768-8367 www.spellmanmuseum.org
 You don't have to be a stamp collector to enjoy a visit to the Spellman. Rotating exhibits of U.S. and worldwide stamps and postal history. Family Days, group visits, gift shop, U.S. Post Office. Thursday–Sunday 12-5pm.

COUNCILS & CONVENERS

Assabet Village Cultural District

Downtown Maynard 01754 • www.townofmaynard-ma.gov/projects/cultural-district

Arts! Ashland Alliance

Ashland 01721 • 508-561-2507 www.artsashland.org
 Our mission is to support access to diverse expressions of arts and cultural programming, promote arts education, and cultivate Ashland's cultural and economic vitality.

Framingham Cultural Council

150 Concord Street, Framingham 01702 • 508-532-5440 www.mass-culture.org/framingham
 The FCC distributes MCC grants funds to arts, humanities, and interpretive science projects in the city of Framingham.

Franklin Cultural District

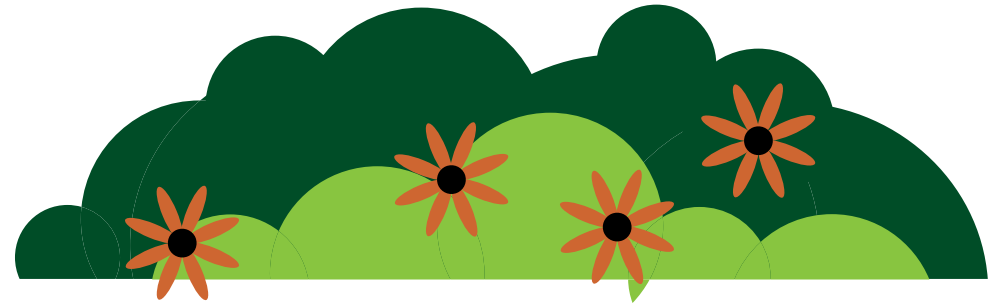
Franklin 02038 • www.franklinculturaldistrict.org
 The purpose of the District is to attract artists and cultural enterprises, encourage business development and job growth, expand tourism, preserve and reuse historic buildings, enhance property values, and foster local cultural development

Natick Center Cultural District

20 Main Street, Natick 01760 • 508-650-8848 www.natickcenter.org
 The District is home to more than 100 working artists, venues, and many independently owned businesses and cultural organizations, all contributing to a busy year-round schedule of arts and cultural events.

Other MetroWest Cultural Councils

- Ashland:** www.ashlandculturalcouncil.org.
- Bellingham:** www.mass-culture.org/Bellingham
- Franklin:** www.franklinma.virtualtownhall.net
- Holliston:** www.mass-culture.org/holliston
- Hopkinton:** www.mass-culture.org/Hopkinton
- Hudson:** www.townofhudson.org
- Marlborough:** www.marlborough-ma.gov
- Medway:** www.medwayculturalcouncil.org
- Milford:** www.mass-culture.org/Milford
- Natick:** www.mass-culture.org/Natick
- Northborough:** www.town.northborough.ma.us
- Sherborn:** www.mass-culture.org/sherborn
- Southborough:** www.southborougharts.org
- Sudbury:** www.sudbury.ma.us
- Westborough:** www.westboroughculturalcouncil.org



A hands-on museum for families that blends **science, nature, and play.**



DISCOVERY MUSEUM
 science. nature. play.

177 Main Street, Acton MA
 978-264-4200
discoveryacton.org

For information about our undergraduate and graduate programs, visit framingham.edu or call 508-620-1220.

Career Growth My Way

 **Framingham State University**

framingham.edu



MetroWest
Visitors Bureau

MASSACHUSETTS



SEARCH

MEMBERSHIP CONTACT

SHOPPING

ART/CULTURE

RECREATION

FOOD

ACCOMMODATIONS

SERVICES

RELOCATION

EVENTS

EXPLORE



There's More to Explore in MetroWest

A full regional events calendar and hundreds of shopping, dining, recreation, and cultural listings are at

www.metrowestvisitors.org



Local motion

Here in MetroWest, we do work hard, but we don't always mean business!

We balance our high tech with low stress, and that means that when we're not working, we're playing around: walking, crafting, biking, kayaking, and generally relaxing. In fact, visitors to nearby cities find MetroWest the quickest, easiest destination for unwinding. Miles of trails and gardens, six state parks, three major rivers, and four wildlife sanctuaries satisfy outdoor enthusiasts.

We're good sports, too, with some of the country's finest indoor facilities for hockey, lacrosse, badminton, and soccer tournaments year-round. Outdoor stadiums, including Bowditch Complex (the largest stadium between Boston and Worcester), New England Sports Center, New England Baseball Complex, and other top-notch venues host youth, college, and professional match-ups.

Around the world, people know the MetroWest town of Hopkinton as the starting line of the Boston Marathon, whose course threads through five nearby towns. In fact, all our towns are criss-crossed with hiking, walking, and running trails that connect users to parks, athletic fields, restaurants, hotels, businesses and shopping areas. Come see why everyone is racing to MetroWest!

Aim High! Competitive team sports, individual endeavors, and leisure recreation offer activities for every speed and skill. Top photo: New England Baseball Center. Bottom photo: courtesy of Urban Air Adventure Park.

WALKING TRAILS

Aqueduct Trail Network

www.mapc.org/resource-library/opening-aqueduct-trails-to-the-public
40 miles of trails along four aqueduct networks criss-cross through MetroWest.

Ashland Town Forest and Cowassick Woods Trail

Winter Street, Ashland 01721 • www.sudburyvalleytrustees.org/cowassock-woods-and-ashland-town-forest

Assabet River Rail Trail

Hudson and Marlborough • www.arrtinc.org

Bay Circuit Trail

www.baycircuit.org
A 34-town trail extending through Wayland, Sudbury, Framingham, Marlborough, Southborough, Ashland, and Sherborn.

Cochituate Rail Trail

www.trailink.com/trail/cochituate-rail-trail
A four-mile, multi-use trail connecting Framingham to Natick Center MBTA station.

Friends of Holliston Trails

www.hollistontrails.org

SNETT (Southern New England Trunkline Trail)

www.franklinbellinghamrailtrail.org
Trail starts in Franklin and goes west 22 miles to Douglas.



TRAILS

Walk this way To discover our many wooded walking trails, go to www.trailink.com/state/ma-trails or:
Ashland: www.ashlandopenspace.org/trails.html
Framingham: www.framinghamma.gov. Search “Passive Recreation Areas & Trails”
Franklin: www.walkboston.org
Holliston: hollistontrails.org
Hopkinton: www.hopkintontrailsclub.com
Marlborough: www.marlboroughma.gov/Gen/MarlboroughMA_ConCommisn/parks/parks
Medway: www.townofmedway.org/open-space-committee/pages/trails-maps
Milford: www.milfordtrail.org
Northborough: www.northboroughtrails.org
Sherborn: www.sherbornforestandtrail.org
Southborough: www.southboroughtown.com/recreation-department

On the waterfront Most MetroWest towns have public beaches, many with boat launches. The Assabet, Concord, and Sudbury Rivers offer limitless kayaking, canoeing, and fishing. For recreation guides to these rivers, go to www.oars3rivers.org/river/recreation
www.paddling.net/places/MA
www.kayakonline.com/Massachusetts

Fun runs For running trails go to www.mapmyrun.com.htm

It's snow good For snowmobile trails, go to www.sledmass.com

Hot to trot? For horseback riding trails see page 20, or go to www.alltrails.com/us.massachusetts/horseback-riding

Sudbury Valley Trustees

978-443-5588 • www.svtweb.org/recreation
SVT conserves natural areas and wildlife habitat in the region around the Sudbury, Assabet, and Concord Rivers. More than 65 Miles of public trails for hiking, bird watching and snowshoeing. Dozens of recreational outings and educational programs.

Trustees of Reservations

200 High Street, Boston 02110 • 508-785-0339 www.thetrustees.org
Caring for 100 outdoor spaces in Massachusetts, the Trustees manage these MetroWest spaces, all with trails:
Bridge Island Meadows: South End Pond, Millis 02054
Pegan Hill: Pegan Lane, Dover and Natick 02030
Cedariver: 161 Forest Road, Millis 02054
Chestnut Hill Farm: Chestnut Hill Road, Southborough 01772
Rocky Narrows/Sherborn Town Forest: South Main Street, Sherborn 01770

Upper Charles Trail

www.uppercharlestrail.org
There are more than 15 miles of completed multi-use trail in Milford, Holliston, Hopkinton, and Ashland. Check the website for more information about the trail in each town.

Walk 'n Mass Volkssport Club

www.walknmass.org
A nonprofit organization hosting walking events.

WalkBoston

www.walkboston.org
This organization offers individual maps of Framingham, Natick, Northborough, Franklin, Milford, and Marlborough showing walks from homes, schools, downtown businesses and shopping centers to all parts of town.

BIKING MAPS

Bike New England www.bikenewengland.com

Assabet River Bicycles www.assabetbicycles.com

Landry's Bicycles www.landrys.com/about/places-to-ride-pg90.htm

Mass Bike www.massbike.org/resourcesnew/pathstrails

Massachusetts Department of Recreation & Conservation www.mass.gov/dcr/recreate/biking.htm
A searchable database of state parks with mountain bike and other trails.

Metropolitan Area Planning Council www.trailmap.mapc.org
Greater Boston cycling and walking map

Trail Link www.trailink.com/stateactivity/ma-bike-trails.aspx

Massachusetts Bicycle Coalition www.masspaths.net/bikeways

STATE PARKS

Ashland State Park

Route 135, Ashland 01721 • 508-881-4092 (Summer), 508-435-4303
www.mass.gov/eea/agencies/dcr/massparks/region-north/ashland-state-park.html
470-acre, multiuse park with swimming, picnicking, boating, fishing, bicycling, and hiking.

Callahan State Park

Millwood Street, Framingham 01701 • 508-653-9641
www.mass.gov/eea/agencies/dcr/massparks/region-north/callahan-state-park.html
A favorite place for dog walkers, this park also offers horseback-riding, fishing, cross-country skiing, and hiking.

Cochituate State Park

93 Commonwealth Road, Wayland 01778 • 508-653-9641
www.mass.gov/eea/agencies/dcr/massparks/region-north/cochituate-state-park.html
 Day-use park for boating, swimming, windsurfing, fishing, and picnicking.

Hopkinton State Park

164 Cedar Street, Hopkinton 01748 • 508-435-4303
www.mass.gov/eea/agencies/dcr/massparks/region-north/hopkinton-state-park.html
 Recreational activities including two lifeguarded swimming beaches, stocked fishing, 12 picnic sites, boat rentals, 10 miles of marked trails, open field space, and boat launching ramp for non-motorized watercraft.

Whitehall State Park

Route 135, Hopkinton 01748 • 508-435-5303
www.mass.gov/eea/agencies/dcr/massparks/region-north/whitehall-state-park.html
 This park offers boating, fishing, a public boat ramp, hiking trails, biking, cross-country skiing, and horseback riding.

HORSEBACK RIDING TRAILS**Callahan State Park**

Millwood Street, Framingham 01701 • 508-653-9641
www.mass.gov/eea/agencies/dcr/massparks/region-north/callahan-state-park.html

Hopkinton State Park

164 Cedar Street, Hopkinton 01748 • 508-435-4303
www.mass.gov/eea/agencies/dcr/massparks/region-north/hopkinton-state-park.html

Rocky Narrows/Sherborn Town Forest

South Main Street, Sherborn 01770 • 508-785-0339 www.thetrustees.org

Sudbury Valley Trustees

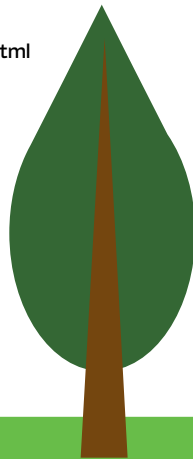
www.sudburyvalleytrustees.org

Whitehall State Park

Route 135, Hopkinton 01748 • 508-435-5303
www.mass.gov/dcr/parks/northeast/whit.htm

Acton Arboretum

Taylor Road, Acton 01720 • 978-264-9631 www.actonarboratum.org

**HORSEBACK RIDING RENTALS & LESSONS****August Farm**

79 Highland Street, Holliston 01746 • 508-429-9411 www.rideaugustfarm.com

North Gate Farm

999 Concord Road, Sudbury 01776 • 978-443-0999 www.northgatefarm.net

Pampered Pony

339 Boston Post Road East, Marlborough 01752 • 914-523-2692

Rising Star Equestrian Center

149 Summer Street, Medway 02053 • 508-533-8551 www.risingstarequestriancenter.com

Sweet Meadow Farm

111 Coolidge Street, Sherborn 01770 • 508-314-7433 www.sweetmeadowfarm.com

Tall Oaks Farm Equestrian Center

55 Orchard Street, Millis 02054 • 508-376-2425

Willow Brook Farm

1070 Washington Street, Holliston 01746 • 508-376-2425 www.willowbrookholliston.com

BOTANIC GARDENS**Acton Arboretum**

Taylor Road, Acton 01720 • 978-264-9631 www.actonarboratum.org

Garden in the Woods

180 Hemenway St., Framingham 01701 • 508-877-7630 www.newenglandwild.org/visit/Garden-in-the-Woods
 Operated by the New England Wild Flower Society, the 45 rolling acres of trails that wind through a variety of natural woodland floral habitats display the largest landscaped collection of wildflowers in the Northeast. Open April-October.

Massachusetts Horticultural Society at Elm Bank

900 Washington Street, Wellesley 02482 • 617-933-4900 www.masshort.org
 Enjoy 12 beautiful gardens, including Weezies' Children's Garden, Italianate Garden, and Bressingham Garden-- a must-see! May 1-October 12, Tuesday-Sunday, 10 am-4pm. Adult \$10; children under 12 free; members free. Daily garden tours and family programs.

Tower Hill Botanic Garden

11 French Drive, Boylston 01505 • 508-869-6111 www.towerhillbg.com
 The world-class garden that's always in season, with displays and events throughout the year. Only 45 minutes west of Boston, Tower Hill is truly a garden paradise.

Wellesley College Botanic Garden

106 Central Street, Wellesley 02481 • 781-283-3094 www.wellesley.edu/wcwg
 The outdoor gardens remain open daily, dawn to dusk, during renovation.

WILDLIFE**Assabet River National Wildlife Refuge and Visitors Center**

680 Hudson Road, Sudbury 01776 • 978-562-3614 www.assabetriver.fws.gov

Mass Audubon's Broadmoor Wildlife Sanctuary

280 Eliot Street, Natick 01760 • 508-655-2296 www.massaudubon.org/Broadmoor
 Nine miles of trails through woodlands, meadows, and wetlands invite you to experience nature. Changing seasons and a variety of wildlife means there's always something new to see. Visit our energy-efficient nature center and accessible boardwalk.

Mass Audubon's Drumlin Farm Wildlife Sanctuary

208 South Great Road, Lincoln 01773 • 781-259-2200 www.massaudubon.org/drumlin
 Experience life on a working farm and explore a wildlife sanctuary at the same time. Visit our farm animals, walk our nature trails, see how crops are sustainably grown, and observe resident native wildlife.

Mass Audubon's Stony Brook Wildlife Sanctuary

108 North Street, Norfolk 02056 • 508-528-3140 www.massaudubon.org/stonybrook
 With an extensive boardwalk system through forest, fields, and wetlands, Stony Brook offers up-close views of wildlife above and under the water. Enjoy Nature Play Area, two miles of trails, and butterfly and bird garden.

Sudbury Valley Trustees

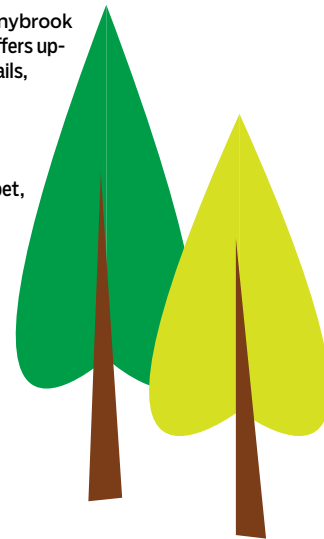
978-443-5588 • www.svtweb.org/recreation
 SVT conserves natural areas and wildlife habitat in the region around the Sudbury, Assabet, and Concord Rivers. More than 65 Miles of public trails for hiking, bird watching and snowshoeing. Dozens of recreational outings and educational programs.

Summer Star Wildlife Sanctuary

690 Linden Street, Boylston 01505 www.summerstarwildlife.org

Waseeka Wildlife Sanctuary

Clinton Street, Hopkinton 01748 • 978-464-2712
www.massaudubon.org/get-outdoors/wildlife-sanctuaries/waseeka



CAMPING

Circle CG Farm Campground

131 North Main Street, Bellingham 02019 • 508-966-1136 www.circlecgfarm.com

Nobscot Scout Reservation

1 Nobscot Road, Framingham 01701 • 508-872-6551 www.ktc-bsa.org/nobscot.htm
Numerous trails on 480 wooded acres.

Normandy Farms Family Camping Resort

72 West Street, Foxborough 02035 • 866-673-2767 www.normandyfarms.com

For a complete list of campsites in the state go to www.familydaysout.com or www.campmass.com



Cellucci Skate & Splash Park

37 South Street, Hudson 01749 • www.townofhudson.org
Playground, splash pad, sculpted in-ground skate park, bocce court, gazebo pavilion, and picnic areas.

Davis Family Farm Adventures

145 Redstone Hill Road, Sterling 01564 • 978-422-8888 www.davisfarmland.com

Golf on the Village Green

315 Worcester Road, Natick 01760 • 508-653-4671 www.gamesandgolf.com

Hanson's Farm

20 Nixon Road, Framingham 01701 • 508-877-3058
www.hansonsfarm.50webs.com

Hockomock Area YMCA / Bernon Family Branch

45 Forge Hill Road, Franklin 02038 • 508-528-8708 www.hockymca.org

Mendon Twin Drive-In

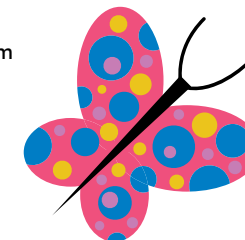
35 Milford Street, Mendon 01756 • 508-473-1092 www.mendondrivein.com

MetroWest YMCA Family Outdoor Center

45 East Street, Hopkinton 01748 • 508-879-4420 www.metrowestymca/hopkinton
The MetroWest YMCA is a cause-driven charitable organization that is for youth development, healthy living, and social responsibility. With branches in Framingham and Hopkinton, the Y is committed to impacting lives and building a stronger sense of community.

Minute Man Airfield

302 Boxboro Road, Stow 01775 • 978-897-3933 www.minutemanairfield.com



OUTDOOR ACTIVITIES

Animal Adventures

336 Sugar Road, Bolton 01740 • 978-779-8988 www.animaladventures.net

Belkin Family Lookout Farm

89 South Pleasant Street South, Natick 01760 • 508-653-0653 www.lookoutfarm.com
Pick your own fruit from our 60,000 fruit trees. Ride the train to the Children's Play Area, visit with our farm animals, climb in the tree house, jump in the moon bounce, and enjoy many other fun activities on 180 exquisite acres. Open May–October.

Boston Paintball—Sudbury

145 Powder Mill Road, Sudbury 01776 • 978-263-1277 www.bostonpaintballmaynard.com

Butterfly Aviary

703 Washington Street, Holliston 01746 • www.hollistonagcom.org/butterfly_aviary




Southwick's Zoo

It's WILD Here.

www.southwickszoo.com


 Don't forget to try the full-service restaurant located at Southwick's Zoo! Galliford's Restaurant & Tavern offers upscale New England fare in a cozy, rustic setting. Learn more at www.gallifords.com.

Natick Community Organic Farm

117 Eliot Street, Natick 01760 • 508-655-2204 www.natickfarm.org

OARS, Inc.

23 Bradford Street, Concord 01742 • 978-369-3956 www.oars3rivers.org

Outdoors RX

Framingham and Waltham • www.outdoorsrx.org

Putts & More

750 Concord Street, Holliston 01746 • 508-429-4FUN www.puttsandmore.com
Putts & More is where youth and adults from MetroWest and beyond come together to spend quality leisure time. Putts & More features a beautifully designed 18-hole miniature golf course and lawn sports.

River Boater's Trail

Concord, Sudbury, Assabet Rivers • www.sudbury-assabet-concord.org

Southwick's Zoo

2 Southwick Street, Mendon 01756 • 800-258-9182 www.southwickzoo.com
More than a zoo, it's an adventure! Visit over 850 animals from around the world. Enjoy Deer Forest, Safari Sky Ride, The Woodland's Express, EARTH Discovery Center, and Galliford's Restaurant and Tavern.

Sudbury Valley Trustees

978-443-5588 • www.svtweb.org/recreation
SVT conserves natural areas and wildlife habitat in the region around the Sudbury, Assabet, and Concord Rivers. Over 65 miles of public trails for hiking, bird watching and snowshoeing. Dozens of recreational outings and educational programs.

Zagster Bike Share

Marlborough 01752 • 202-999-3924 www.bike.zagster.com/marlborough
Framingham 01702 • www.zagster.com
Five Marlborough locations where you can pick up or drop off a bike. Pay by the hour, day, month, or year. Framingham program begins 2019; check website for locations.

GOLF**Bungay Brook Golf Club**

30 Locust Street, Bellingham 02019 • 508-883-1600 www.bungaybrook.com

Dr. Greens

83 Union Street, Ashland 01721 • 508-202-9298 www.drgreensgolf.com

Fore Kicks Golf Course & Sports Complex

219 Forest Street, Marlborough 01752 • 508-624-4422 www.forekicks.com
State-of-the-art indoor driving range: eight separate driving bays, nine feet wide with dividers, ball trays and racks, air-cushioned driving mats.

Glen Ellen Country Club

84 Orchard Street, Millis 02054 • 508-376-2978 www.theglenc.com

Hopedale Country Club

4 Mill Street, Hopedale 01747 • 508-473-9876 www.hopedalecc.com

Juniper Hill Golf Course

202 Brigham Street, Northborough 01532 • 508-393-2444 www.juniperhillgc.com

Kohr Golf

218 Speen Street, Natick 01760 • 888-622-5647 www.khorgolf.com

Marlborough Country Club

200 Concord Road, Marlborough 01752 • 508-481-5340 www.marlboroughcc.com
A private golf course that accommodates public play on Mondays and Tuesdays. The course is a par 71 men, 72 women with multiple sets of tees to challenge every skill level.

**New England Country Club**

180 Paine Street, Bellingham 02019 • 508-883-2300 www.newenglandcountryclub.com
The New England Country Club is a prime facility for golf and social events of any kind. Guests enjoy the relaxing views and atmosphere surrounding this well-manicured championship public golf course designed by Hale Irwin.

Pinecrest Golf Club

212 Prentice Street, Holliston 01746 • 508-429-9871
www.pinecrestgolfclub.net

Sassamon Trace Golf

233 South Main Street, Natick 01760 • 508-655-1330
www.sassamontrace.com

Sandy Burr Country Club

103 Cochituate Road, Wayland 01778 • 508-358-7200
www.sandyburr.com

**SPORTS****Assabet River Bicycles**

90 Cherry Street, Hudson 01749 • 978-568-0000 www.assabetbicycles.com

Ashland Sporting Association

Marathon Park, Pleasant Street, Ashland 01721 • www.ashlandhalfmarathon.com
Offering two half-marathons, March and October, that begin at the original starting line of the Boston Marathon and cover half its route.

Babson Skating Center

150 Great Plain Avenue, Wellesley 02482 • 781-239-6056 www.babsonskatingcenter.com

Boston Athletic Association

One Ash Street, Hopkinton 01748 • 508-435-6905 www.baa.org
Established in 1887, the BAA hosts the Boston Marathon, Half Marathon, and Mayor's Cup. Its Hopkinton office at "The Starting Line" manages runners' services.

Boston Badminton

169 Flanders Road, Westborough 01581 • 508-329-1710 www.bostonbadminton.com

Boston Sports Institute, A Steward Family Facility

900 Worcester Street, Wellesley 02482 • 781-489-5088 www.bostonsportsinstitute.com
Multi use recreation facility featuring two NHL regulation ice surfaces (one fully sled hockey compatible), indoor synthetic turf field, competition swimming pool, warm up pool, Boston Sports Performance Center strength and conditioning, and Steward Medical Physical Therapy.

Bowditch Field Athletic & Cultural Complex

475 Union Avenue, Framingham 01702 • www.framinghamma.gov
Walking/running track, basketball courts, and tennis courts available. The largest stadium between Boston and Worcester, Bowditch Complex seats 3000 spectators. Baseball diamond and field for football, soccer, and lacrosse.

Central Rock Gym

1451 Concord Street, Framingham 01701 • 774-777-5637 www.centralrockgym.com/framingham

Dover Squash and Fitness

721 Worcester Road, Natick 01760 • 508-545-2442 www.doversquashandfitness.com

Field House

31 Union Avenue, Sudbury 01776 • 978-440-9944 www.fieldhousesudbury.com/lacrosse

Fore Kicks Golf Course & Sports Complex

219 Forest Street, Marlborough 01752 • 508-624-4453 www.forekicks.com
New England's newest and largest sports complex featuring seven indoor fields, lighted par-33 golf course, and outdoor championship lighted turf sport fields. Also locations in Norfolk and Taunton.

Franklin Downtown Sports

240 Cottage Street, Franklin 02038 • 508-528-1339 www.downtownsports.net

Friends of Southborough Recreation

21 Highland Street, Southborough 01772 • 508-229-4452 www.southborough.recdesk.com
Building a healthy community by offering programs for adults and children of Southborough and surrounding communities, including festivals and events.

Frozen Ropes

14 Tech Circle, Natick 01760 • 508-653-7673 www.frozenropes.com

Hockomock Area YMCA—Bernon Family Branch

45 Forge Hill Road, Franklin 02038 • 508-528-8708 www.hockymca.org

Landry's Bicycles

790 Worcester Street, Natick 01760 • 508-655-1990
276 Turnpike Road, Westborough 01581 • 508-836-3878 www.landrys.com

MetroWest YMCA

280 Old Connecticut Path, Framingham 01701 • 508-879-4420 www.metrowestymca.org
For over 50 years, the MetroWest YMCA, with branches in Framingham and Hopkinton, has helped members improve their health and well-being while building a stronger sense of community.

New England Baseball Complex

Route 20, Northborough 01532 • 617-531-4662 www.neruffnecks.org
New England's premiere outdoor baseball facility with three lighted fields, also suitable for softball, soccer, and lacrosse. Tournaments and college games open to the public.

New England Sports Center

121 Donald Lynch Boulevard, Marlborough 01752 • 508-229-2700 www.nes.com
NES is the premiere indoor ice facility in the United States, with eight full-size rinks, pro shop, restaurant, snack bar, fitness center, and more. Site of regional and national hockey and figure skating training and tournaments.

Teamworks

185 Otis Street, Northborough 01532 • 508-351-9800 www.teamworksnorthboro.com

Title Boxing Club

235 Old Connecticut Path, Framingham 01701 • 508-861-7300 www.titleboxingclub.com
Apex Center, 180 Boston Post Road West, Marlborough 01702 • 866-212-8485
www.titleboxingclub.com

Wayside Racquet & Swim Club

80 Broadmeadow Street, Marlborough 01752 • 508-481-1797 www.wayside.net

Weston Ski Track

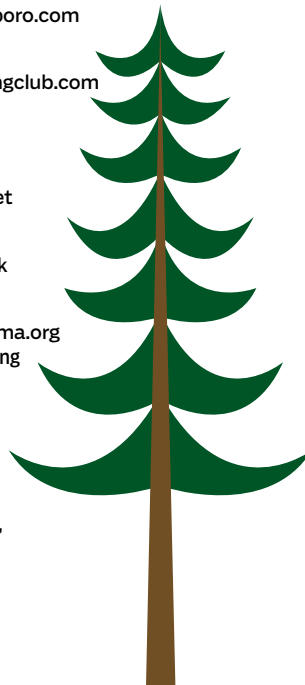
190 Park Road, Weston 02493 • 617-965-5110 www.paddleboston.com/skitrack

Yawkey Sports Training Center

512 Forest Street, Marlborough 01752 • 508-485-0986 www.specialolympicsma.org
As headquarters of Special Olympics Massachusetts, the center offers year-round training areas, a gymnasium, health-related programming, and Hall of Fame for athletes with intellectual disabilities throughout the state.

Zagster Bike Share

Marlborough 01752 • 202-999-3924 www.bike.zagster.com/marlborough
Framingham 01702 • www.zagster.com
Five Marlborough locations where you can pick up or drop off a bike. Pay by the hour, day, month, or year. Framingham program begins 2019; check website for locations.

**INDOOR ACTIVITIES****Altitude Trampoline Park**

Apex Center, 180 Boston Post Road West, Marlborough 01752 • 774-843-2930 www.altitudeparkma.com
303 East Central Street, Franklin 02038

Apex Entertainment Center of New England

21 Apex Drive, Marlborough 01752 • 508-251-8666 www.apexentertainmentcenter.com
Located in a state-of-the-art complex, the new Apex Entertainment Center is New England's largest indoor entertainment center, offering indoor kart racing, golf and sports simulators, ropes course, laser tag, arcade, extreme bumper cars, luxury candlepin bowling.

BB Kidz

21 Apex Drive, Marlborough 01752 • 508-251-1924 www.bb-kidz.com

Blackstone Valley Iceplex

121 Plain Street, Hopedale 01747 • 508-478-6423

Boston Paintball—Ashland

120 Pond Street, Ashland 01721 • 508-879-6621 www.bostonpaintballashland.com

Central Rock Gym

1451 Concord Street, Framingham 01701 • 774-777-5637 www.centralrockgym.com/framingham

Dave and Busters

1235 Worcester Street, Natick 01760 • 508-810-3650 www.daveandbusters.com
Located in the Natick Mall, our mission is to create fun through the best combination of the latest and greatest games, ultimate sports-viewing, extraordinary food and remarkable drinks.

Fun and Games

50 Worcester Road, Framingham 01702 • 508-879-5707 www.gamesandgolf.com/funandgames

PUTTS & MORE
FAMILY FUN CENTER

Old Fashioned Family Fun at an Affordable Price

Enjoy our 18 Hole Mini Golf Course, Jumping Pillow,
Lawn Sports & Snack Bar

GREAT FACILITIES FOR ALL YOUR SPECIAL EVENTS!
Birthday Parties, Company Outings, Sport Team Outings, & More

508-561-2902 ■ jim@puttsandmore.com

750 Concord Street, (Rt. 126), Holliston, MA 01746

www.puttsandmore.com

Great Wolf Lodge

150 Great Wolf Drive, Fitchburg 01420 • 978-343-9653 www.greatwolf.com

Half-Axe

21 Apex Drive, Marlborough 01752 • www.halfaxe.com

Hop N Jump Indoor Playground

72 Jefferson Street, Marlborough 01752 • 508-305-2646 www.hopnjumpindoorplayground.com

Launch Trampoline Park

2 California Ave, Framingham 01701 • 508-356-5468 www.launchtrampolinepark.com/framingham

Lazer Craze

166 Milk Street, Westborough 01581 • 508-366-6366 www.lazercraze.us

Modelville Hobby

280 Eliot Street, Ashland 01721 • 508-881-7616 www.modelvillehobby.com
Your complete source for slot car racing, with three eight-lane slot car tracks for 1:32 and 1:24 scale race cars. Tracks range from 90-220 feet. Purchase or bring your own cars to run on our tracks.

Navin Skating Arena

451 Bolton Street, Marlborough 01752 • 508-74-SKATE www.fmcicesports.com

Playtown Express

150 Cordaville Road, Southborough 01772 • 508-480-0022 www.playtownexpress.com

Pinz

110 South Main Street, Milford 01757 • 508-473-6611 www.pinzbowl.com

Pirelli Veterans Arena

910 Panther Way, Franklin 02038 • 508-74-SKATE www.fmcicesports.com/rink/franklin-veterans-skating-arena

Plainridge Park Casino

301 Washington Street, Plainville 02762 • 508-576-4500 www.plainridgeparkcasino.com
The state's only gaming casino and live harness-racing track. An incredibly exciting and friendly entertainment experience! Experience the nonstop thrill of over 1,200 slots, from traditional to cutting-edge games.

Roller Kingdom

5 Highland Park Avenue, Hudson 01749 • 978-562-3440 www.rollerkingdom.com

Ryan Family Amusement Center

1170 Main Street, Millis 02054 • 507-376-1101 www.ryanfamily.com

Sky Zone Westborough

290 Turnpike Road, Westborough 01581 • 508-870-5867 www.skyzone.com/westborough

Trombetta's Farm

655 Farm Road, Marlborough 01752 • 508-485-6429 www.trombettasfarm.com
277 Main Street, Northborough 01532 • 508-393-3560 www.trombettasfarm.com

Tumblebeans Café & Play

114B Main Street, Medway 02053 • 774-277-7916 www.tumblebeans.com

United Archery Lanes

305 Union Street, Franklin 02038 • 508-520-3562

Urban Air Adventure Park

189 Mechanic Street, Bellingham 02019 • 508-232-4604 www.urbanairtrampolinepark.com
An indoor adventure park renowned for its trampolines, offering so many amusing and adventurous activities leaving families awestruck and wondering which to pick first

William L. Chase Skating Arena

75 Windsor Avenue, Natick 01760 • 781-312-5048 www.fmcicesports.com

DORAGON RAMEN
508-309-3416 | WWW.DORAGONRAMEN.COM
1 WEST UNION ST, ASHLAND, MA 01721
FRESH - LOCAL - AUTHENTIC
FORMERLY NOODLE CITY



CRAFT BEVERAGES

Amory's Tomb Brewing Co.
76 Main Street, Maynard 01754
978-243-0875 • amorystomb.com

Barleycorn's Craft Brew
21 Summer Street, Natick 01760
508-651-8885 • barleycorn.com

Battle Road Brewery & Brew Pub
6 Clock Tower Plaza, Maynard 01754
978-897-1284 • battleroadbeer.com

CraftRoots Brewing
482 East Main Street, Milford 01757
508-662-4871 • craftrootsbrewing.com

Cold Harbor Brewing Co.
108 Milk Street, #6, Westborough 01581
508-871-0919 • coldharborbrewing.com

Eliot Taproom at The Kells Beer Co.
21 Summer Street, Natick 01760
508-651-8885 • kellsbeerco.com

Exhibit A Brewing Company
81 Morton Street, Framingham 01702
508-202-9297 • exhibit-a-brewing.com
Exhibit 'A' Brewing Company offers a fun look at storytelling through beer with a subtle nod

towards the meaning of life. We are always seeking balance both in life and in our beers.

Flying Dreams
277 Main Street, Marlborough 01752
flyingdreamsbrewing.com

Framingham Beer Works
345 Cochituate Road, Framingham 01701
508-309-3373 • www.beerworks.net

Ground Effect Brewing Company
312 Main Street, Hudson 01749
978-212-5302 • groundeffectbrewing.com

Jack's Abby Beer Hall & Kitchen
100 Clinton Street, Framingham 01702 •
508-872-0900 • jacksabby.com
Founded in 2011, we've become a mainstay of the craft brewing scene in the Northeast and nationwide by making truly distinctive lagers featuring local ingredients, traditional German brewing standards, and American innovation. Full food menu, tours, and tastings.

John Harvard's Brewery & Ale House
1 Worcester Road, Framingham 01701
508-875-2337 • johnharvards.com

La Cantina Winery
355-357 Union Street, Franklin 02038
617-851-5127 • lacantinawinery.com

Lookout Farm Brewing & Cider Co.
89 Pleasant Street, Natick 01760 •
508-653-1178 • lookoutfarmbrewing.com
From our farm to your glass, the Lookout Taproom offers a rotating variety of our craft ciders and beers. With greenhouse, patio, and stone fireplace, the Taproom offers a food menu, live entertainment, and event space.

Lost Shoe Brewing and Roasting Co.
19 Weed Street, Marlborough 01752
lostshoebrews.com

Mass Brewers Guild
P.O. Box 2096, Framingham 01701 • 508-405-9115
www.massbrewersguild.org
Download our "Mass Craft Beer" app, which includes an interactive map of every visit-able brewery. Create your own brewery tour, and use the Passport feature to earn rewards and merchandise.

Medusa Brewing Company
111 Main Street, Hudson 01749
978-310-1933 • medusabrewing.com

Springdale Barrel Room
102 Clinton Street, Framingham 01702
774-777-5430 • springdalebeer.com
Barrel-aged ales, sour beers, and other niche styles from the team behind Jack's Abby. We let the ancient alchemy between beer and oak work its slow magic. Open Thursdays-Sundays. Bring in food or have it delivered.

Start Line Brewing
151R Hayden Rowe, Hopkinton 01748
508-761-2044 • startlinebrewing.com
Founded in 2016 at Water Fresh Farm, we relentlessly pursue crafting extraordinary beer, starting with our own hydroponic hops grown on property. We hope you enjoy this slow and steady, handcrafted fresh beer at our brewery and tap room.

Strangebrew
416 Boston Post Road East, Marlborough
01752 • 508-460-5050
strangebrew.net

Tackle Box Brewing Company
416 Boston Post Road East, Marlborough
508-395-2096 • tackleboxbrewing.biz/home

True West Brewery
525 Massachusetts Avenue, Acton 01720
978-206-1600 • brewtruewest.com



Catering to your tastes

Fueled by creativity and inspired by exciting ingredients, our region is always cooking up new offerings.

Our region's chefs, brewers, and farmers are palate-pleasers. Choose from a gourmet experience with many courses, traditional New England comfort food in a relaxed inn, a quick meal to fire up your team, or a tasting of a variety of new brews and hard ciders. Or take a workshop to hone your own culinary or brewing techniques.

Our region is a blend of all flavors, because we are what we eat: traditional New Englanders enjoying classic American dishes fused with new flavors; descendants of Brazil, Ireland, India, China, and countries the world-over celebrating their traditions; international business travelers satisfying their palates at the most sophisticated restaurants; and families of every culture and heritage relaxing at barbeques and ice-cream stands.

MetroWest cuisine is growing places! In our restaurants, locally sourced ingredients come together in dishes representing our residents and travelers from around the world. Local organic farms, farmstands, and a dozen weekly farmers' markets ensure a supply of the freshest ingredients for the simplest and most sophisticated diners.

Tantalize your taste buds in bountiful ways throughout MetroWest. From wine to wings and everything in between. Top photo: La Cantina Winery courtesy of Franklin Cultural Council. Bottom photo: Doragon Ramen (formerly Noodle City) courtesy of Scott Erb, ERB /Dufault Photography

RESTAURANTS

110 Grill

1 Lumber Street, Hopkinton 01748 • 508-625-2124 www.110grill.com
 171 Commonwealth Road, Wayland 01770 • 508-975-4437 www.110grill.com
 115 Apex Drive, Marlborough 01752 • 508-251-2037 www.110grill.com

3 Restaurant

461 West Central Street, Franklin 02038 • 508-528-6333 www.3-restaurant.com

Acapulco's

694 Boston Post Road, Sudbury 01776 • 978-443-39070 www.acapulcos.net

Aegean Restaurant

257 Cochituate Road, Framingham 01701 • 508-879-8424 www.aegeanrestaurants.com

Agostino's Italian Restaurant

23 Washington Street, Natick 01760 • 508-655-6643 www.agostinositalianrestaurant.com

Amaia Martini Bar

174 Main Street, Hudson 01749 • 978-567-9779 www.facebook.com/amaiamartini

Anthony's Coal Fired Pizza

10002 Shops Way, Northborough 01532 • 508-466-2050 www.acfp.com
 219 North Main Street, Suite A-104, Natick 01760 • 774-290-5106

Arturo's Ristorante

54 East Main Street, Westborough 01581 • 508-366-1881 www.arturosristorante.com

Ashland Ale House

23 Pond Street, Ashland 01721 • 508-861-7780 www.ashlandalehouse.com

Ben & Jerry's Natick Scoop Shop

1265 Worcester Street, Natick 01760 • 508-650-5400 www.benjerryнатick.com

Bertucci's Italian Restaurant

601 Donald Lynch Boulevard, Marlborough 01752 • 508-485-3636 www.bertuccis.com
 Our passion is crafting delicious Italian meals using simple, time-honored recipes. In the Solomon Pond Mall.

Bison Burger American Saloon

22 South Street, Hopkinton 01748 • 508-435-5100 www.bisonburgeramericansaloon.com

Blue Coyote Grille

137 Main Street, Maynard 01754 • 978-897-1998 www.bluecoyotegrille.com

Boston Bean

102 Main Street, Maynard 01754 • 978-897-9807 www.facebook.com/Boston-Bean-House

Bourbon's Kitchen & Cocktails

47 Beacon Street, Framingham 01701 • 508-861-7997 www.bourbonsframingham.com

Bullfinch's

730 Boston Post Road, Sudbury 01776 • 978-443-4094 www.bullfinchs.com

Burger Bar by Wegmans

1245 Worcester St, Natick, MA 01760 • 508-960-0180 www.wegmansburgerbar.com
 Fast, fresh & flavorful! Enjoy classic burgers, salads, sandwiches, kids' meals, and more at The Burger Bar. Located on the second floor of Wegmans at Natick Mall.

Buttercup

13 W Central Street, Natick 01760 • 508-545-1506 www.eatbuttercup.com

Café 641

45 Main Street, Hudson 01749 • 978-652-0741 www.facebook.com/Cafe641

Carbone's Restaurant

280 Cedar Street, Hopkinton 01748 • 508-435-3465 www.carboneshopkinton.com

Casey's Diner

36 South Avenue, Natick 01760 • www.caseysdiner.com

The Chateau

95 Turnpike Road, Westborough 01581 • 508-366-5959 www.chateaurrestaurant.com

Central Public House

42 Main Street, Hopkinton 01748 • 508-625-2570 www.centralpublichouse.com

Cheng Du

157 Turnpike Road, Westborough 01581 • 508-366-7489 www.chengdurestaurant.com

Chill Kitchen and Bar

416 Boston Post Road East, Marlborough 01752 • 508-251-0048 www.chillkitchenandbar.com

China Gourmet & Sushi & Lounge

1583 Worcester Road, Framingham 01701 • 508-628-9227 www.chinagourmetframingham.com

Civic Kitchen & Drink

121 West Main Street, Westborough 01581 • 508-329-5179 www.civickitchenanddrink.com

The Coach Grill

55 Boston Post Road, Wayland 01778 • 508-358-5900 www.coachgrillrestaurant.com

Coachmen's Lodge

273 Wrentham Road, Bellingham 02019 • 508-883-9888 www.coachmenslodge.com

Common Cafe and Kitchen

9 South Main Street, Natick 01760 • 508-655-3498 www.thecommoncafeandkitchen.com

Coffee Loft

406 Lincoln Street, Marlborough 01752 • 508-251-2754 www.coffee-loft.com

Cornell's Irish Pub

229 Hayden Rowe Street, Hopkinton 01748 • 508-435-6192 www.cornellspub.com

The Cottage Wellesley

190 Linden Street, Wellesley 02482 • 781-239-1100 www.cottagewellesley.com

Depot Street Tavern

45 Depot Street, Milford 01757 • 508-488-6844 www.depotsttavern.com

Dolphin Seafood Restaurant

12 Washington Street, Natick 01760 • 508-655-0669 www.dolphinseafood.com
 An exceptional dining experience, where fresh seafood and quality service are the Dolphin's commitment to its customers. Relax with friends in the lounge or enjoy a fantastic meal in one of the attractive dining rooms.

Doragon Ramen (formerly Noodle City)

1 West Union Ave, Ashland 01721 • 508-309-6416 www.doragonramen.com
 Specializing in authentic noodle dishes from Japan and Thailand. We believe in using fresh, local ingredients, keeping it simple and letting the food speak for itself.

Eastside Grill at Marlborough Country Club

200 Concord Road, Marlborough 01752 • 508-485-1660, x6 www.marlboroughcc.com/restaurant

East Side Room Restaurant (at Keefe Technical School)

750 Winter Street, Framingham 01702 • 508-416-2358 www.keefetech.org/sporty/esr

Erica's Ristorante

78 Front Street, Ashland 01721 • 508-881-1982 www.ericasristorante.com

Evviva Trattoria

142 Apex Drive, Marlborough 01752 • 774-843-2599 • www.evvivatrattoria.com

Firefly's Bodacious Bar-B-Q

350 East Main Street, Marlborough 01752 • 508-357-8883 www.fireflysbbq.com
Firefly's BBQ is more than a great Marlborough restaurant with live music and an outdoor patio... we are New England's largest barbecue caterer featuring delicious low-fire, slow-cooked flavors and authentic Southern dishes.

Fish Restaurant & Wine Bar

29 South Bolton Road, Marlborough 01752 • 508-460-FISH (3474) www.eatatfish.com

Framingham Beer Works

345 Cochituate Road, Framingham 01701 • 508-309-3373 www.beerworks.net

Franco's Trattoria

365 Boston Post Road, Mill Village, Sudbury 01776 • 978-443-3494 www.welovefrancos.com

Franklin Flatbreads

370 King Street, Franklin 02038 • 508-520-7900 www.franklinpizza.com

Galante's Restaurant

320 Village Street, Medway 02053 • 508-533-4473 www.galantesrestaurant.com

Heritage of Sherborn

33 North Main Street, Sherborn 01770 • 800-552-9742 www.heritageofsherborn.com
Our New England cuisine and warm hospitality ensure a quintessential country experience.

Hot Table

Apex Center, 180 Boston Post Road West, Marlborough, 01752 • www.hottable.com/#locations

Horseshoe Pub & Restaurant

29 South Street, Hudson 01749 • 978-568-1265 www.horseshoepub.com

Hudson House Restaurant and Lounge

40 Washington Street, Hudson 01749 • 978-567-0948 www.facebook.com/HudsonHouseRestaurant

IHOP

17 Edgell Road, Framingham 01701 • 508-270-2694 www.restaurants.ihop.com
4102 Shops Way, Northborough 01532 • 598-393-1222 www.restaurants.ihop.com

Jasper Hill Cafe & Bistro

270 Exchange Street, Millis 020254 • 508-794-1567 www.jasperhillmillis.com

John Harvard's Brewery & Ale House

1 Worcester Road, Framingham 01701 • 508-875-2337 www.johnharvards.com

KO Sushi and Grill

25 Hayward Street Hopkinton 01748 • 508-625-2082 • www.kosushiandgrill.com

Kith And Kin

40 Washington Street, Hudson 01749 • 978-562-3800 www.kithandkinhudson.com

Kravings Grille & Ice Cream

979 Main Street, rt 109, Millis 020254 • 508-376-6069 www.kravingsmillis.com

Kumar's Boston

8110 Shops Way, Northborough, MA 01532 • 508-393-3434 www.kumarmessboston.com

Less Than Greater Than

28 Main Street, Hudson 01749 • 978-333-7142 www.lessthanguerthan.com
Offering a full and creative range of cocktails, including our Tiki Bar selections, and simple dishes crafted with warmth and meticulous care. Enter our speakeasy through the rear of New City Microcreamery.

Little Lola's

57 Eliot Street, Natick 01760 • 508-647-1789 www.lolasnatick.com

The Local

400 Boston Post Road, Wayland 01778 • 508-276-8263 www.liveeatlocal.com/wayland
11 Forest Street, Wellesley 02481 • 781-694-1210 www.liveeatlocal.com/wellesley
1391 Washington Street, West Newton 02465 • 617-340-2160 www.liveeatlocal.com/newton
Visit The Local in West Newton, Wellesley, and Wayland. We have a wide array of beers on tap, wonderful wines, great cocktails, delicious food, and friendly service in a warm, comfortable atmosphere.

Lookout Farm Taproom

89 Pleasant Street South, Natick 01760 • 508-653-1178 www.lookoutfarmcider.com
Untap the fun every Thursday-Sunday with pints and tasting flights of our craft cider plus perfect food pairings. Our taproom offers a rotating variety of cider flavors. Pick up some to go, too!

Longfellow's Wayside Inn

72 Wayside Inn Road, Sudbury 01776 • 978-443-1776 www.wayside.org
Award-winning cuisine awaits you at America's oldest Inn. Cozy corners, historic décor, and colonial charm are all part of the Wayside Inn experience. The Inn is a true dining destination.

Maguro House Japanese Restaurant

29 East Central Street, Franklin 02038 • 508-520-8899 www.magurohouse.com

Margaritas Mexican Restaurant

10006 Shops Way, Northborough 01532 • 508-466-2200 www.margs.com
725 Cochituate Road, Framingham 01701 • 508-309-7348 www.margs.com

Mel's Commonwealth Cafe

310 East Commonwealth Road, Wayland 01778 • 508-653-7777 www.melscommonwealthcafe.com

Miss Mendon Diner

16 Uxbridge Road, Mendon 01756 • 508-634-3000 www.missmendondiner.com

MOOyah Burgers, Fries, and Shakes

10010 Shops Way, Northborough 01532 • 508-466-2300 www.mooyah.com

Muffin House Cafe

116 Main Street #1, Medway 02053 • 508-533-6655 www.muffinhousecafe.com
32 Hastings Street, Mendon 01756 • 508-381-0249
43 Main Street, Hopkinton 01748 • 508-625-8100
325 North Main Street, Natick 01760 • 508-647-0500

New City Microcreamery

28 Main Street, Hudson 01749 • 978-333-7144 newcitymicrocreamery.com
We've created the handmade ice cream of our wildest imaginations in flavors ranging from vanilla sweet corn to chardonnay cilantro. Because man cannot live on ice cream alone, we offer locally sourced coffee and lattes, bagels, and pastries.

PJ's Smoke & Grill

112 Main Street, Medway, MA 02053 • 508-321-1193 www.pjsmedway.com

The Pantry

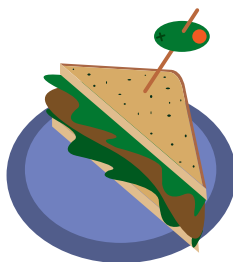
1360 Worcester Street, Natick 01760 • 508-653-8800 www.vervehotelnatick.com
Reminiscent of a modern-day version of Julia Child's kitchen, this restaurant weaves culinary "tools of the trade" into the room's architecture and into a menu that is a modern take on American comfort food. Located in The VERVE Hotel Boston Natick, Tapestry Collection by Hilton

Pit Stop Tavern at APEX Entertainment Center

21 Apex Drive, Marlborough 01752 • 508-251-8666 www.apexentertainmentcenter.com
The Pit Stop Tavern at Apex Entertainment is the place to grab a bite while enjoying all our attractions, featuring chef created American cuisine, creative cocktails at three bars and 30 full service bowling lanes!

Postern Grille

1657 Worcester Road (Sheraton Hotel), Framingham 01701 • 508-879-7200 www.posterngrille.com
This warm and inviting dining establishment features cuisine with a modern twist on New England classic dishes. The open kitchen layout creates an interactive experience and the diverse menu will keep you coming back.



Prezo Grille & Bar

229 ½ East Main Street, Milford 01757 • 508-634-0101 www.prezogrille.com

Primavera

20 Pleasant Street, Millis 02054 • 508-376-0206 www.primav.com

Prospector Bar & Grill

520 Lincoln Street, Marlborough 01752 • 508-485-9072

Quattro

22 South Street, Hopkinton 01748 • 508-435-4300
www.quattro-hopkinton.com

The Rail Trail Flatbread Co.

33 Main Street, Hudson 01749 • 978-293-3552
www.railtrailflatbread.com

Fresh, handcrafted food, including our signature wood-fired flatbreads, with a menu changing seasonally to keep up with the freshest ingredients. Homemade cocktails, wines, and craft beers.

Red Barn Coffee Cafes

17 South Street, Westborough 01581 • 508-481-9556 www.redbarncoffee.com
20 Worcester Road, Southborough 01772 www.redbarncoffee.com
205 Turnpike Road, Southborough 01772 www.redbarncoffee.com

The Red Heat Tavern

124 Medway Road #1, Milford 01757 • 774-462-5990 www.redheattavern.com
227 Turnpike Road, Westborough 01581 • 508-329-1795

Regatta Bar & Grille (in the DoubleTree Hotel)

5400 Computer Drive, Westborough 01581 • 508-366-5511 www.bostonwestborough.doubletree.com
Enjoy breakfast, lunch, and dinner at Regatta Grill, where we blend New England basics with new and unique styles. Or relax in the comfortable all-day Regatta Bar, offering a special menu, signature cocktails, spirits, and regional beers.

Restaurant 45

45 Milford Street, Medway 02053 • 508-533-8171 www.45restaurant.com

Rhapsody Victorian Coffee House

395 East Central Street, Franklin 02038 • 508-440-5324 www.rhapsodyvictoriancoffeehouse.com

Romaine's of Northborough

299 West Main Street, Northborough 01532 • 508-393-8889 www.romainesrestaurant.com

Samba Steak & Sushi

1138 Worcester Road, Framingham 01702 • 508-628-0288 www.sambaframingham.com
Celebrate the fusion of two exciting culinary cultures: Brazil and Peru. Samba Steak & Sushi captures this energy and warmth in its innovative dishes and festive décor. Prepare for an unrivaled dining experience!

Skybokx 109 Sports Bar & Grill

319 Speen Street, Natick 01760 • 508-903-1600 www.skybokx109.com
Natick's hometown sports bar pays tribute to Boston's greatest players and teams. Stop in to watch all the games on 20 tvs, enjoy live music every Friday and great food! Open seven days a week

Sofa Café

181 Concord Street, Framingham 01702 • 857-250-2381 www.sofacafeusa.com

Sol de Mexico Bar & Grill

191 Mechanic Street, Bellingham, MA 02019 • 508-966-4000 www.soldemexicorestaurants.com

Soul of India

103 Boston Post Road Sudbury 01776 • 978-261-5790 www.soulofindiasudbury.com

Spruce Pond Creamery

370 King Street, Franklin 02038 • 508-520-7900 www.franklinpizza.com

**Stone's Public House**

79 Main Street, Ashland 01721 • 508-881-1778 www.stonespublichouse.com

TJ's Food & Spirits

355 West Union Street, Ashland 01721 • 508-881-1565 www.tjsspirits.com

Tavern in the Square

318 Main Street, Northborough 01532 • 508-393-3111 www.taverninthesquare.com

Tavolino Italian Gourmet

33 East Main Street, Westborough 01581 • 508-366-8600 www.tavolinorestaurant.us

Teddy Gallagher's Irish Pub

30 Main Street, Franklin 02038 • 508-298-7644 www.teddygallagherspub.com

Tomasso Trattoria and Enoteca

154 Turnpike Road, Southborough 01772 • 508-481-8484 www.tomassotrattoria.com

Town Common Cafe

76 Hopedale Street, Hopedale • 508-473-3004 www.sites.google.com/site/thetowncommon

Twenty-Nine: Rustic Mediterranean

29 Hudson Road, Sudbury, MA 01776 • 978-443-1400 www.rustic29.com

UNO Pizzeria & Grill

70 Worcester Road, Framingham 01701 • 508-620-1816 www.unos.com
225 Turnpike Road, Westborough 01581 • 508-616-0300 www.unos.com

The Vin Bin

91 Main Street, Marlborough 01752 • 508-480-9463 www.thevinbin.com
22 South Street, Hopkinton 01748 • 508-435-9463 www.thevinbin.com
154 Turnpike Road, Southborough 01772 • 508-485-8884 www.thevinbin.com
Craft beer tastings each Thursday 5-7pm and wine tastings every Friday 5-7pm. Soups, salads, and sandwiches with the freshest ingredients including specialty cheeses.

Violet Thorne

1360 Worcester Street, Natick • 508-653-8800 www.vervehotelnatick.com
Located in The VERVE Hotel Boston Natick, Tapestry Collection by Hilton, this chic lounge serves premium cocktails from seasoned mixologists and a fine selection of small plates and creative entrees. A water wall, fireplace, and media wall accentuate the vibrant ambience.

Vohn's

633 Pulaski Boulevard, Bellingham 02019 • 508-883-4934 www.vohns.com

Volturno

1 Edgell Road, Framingham 01701 • 508-875-7105 www.volturnopizza.com

Wanokura

194 West Street, Milford 01757 • 508-381-6767 www.wanokura.us

Wegmans

9102 Shops Way, Northborough 01532 • 508-936-1900 www.wegmans.com
Natick Mall, 1245 Worcester Street, Natick 01760 • 508-960-0100 www.wegmans.com
This upscale grocery and market includes the Market Café, the Food Bar, and sushi bar for dining in.

Yama Zakura

369 West Main Street, Northborough 01532 • 508-393-4187 www.yamazakurasushi.com

Zaftig's Deli

1298 Worcester Street, Natick 01760 • 508-653-4442 www.zaftigs.com
We serve traditional Jewish-style offerings of corned beef, pastrami, potato pancakes, and chicken soup in addition to over 200 creative and diverse menu items prepared in our scratch kitchen. The banana-stuffed French toast is legendary; breakfast is served all day.





Home away from home

What is 300 years old and gets more robust each day? MetroWest's hotel industry.

With the opening of our first Inn in 1716, our region's hotels have always offered travelers the right place at the right time. There's plenty of rest for the weary! Whether ambling down the 18th-century Boston Post Road or whizzing through the modern intersection of I-90 and I-495, visitors have always found our accommodations to be right where they need them.

With Route 9 running east-west and I-495 curving south-north, major roads bring hundreds of thousands of business travelers, who rub elbows with the visitors attending sports tournaments, college events, and cultural attractions. Here, they all find a home away from home—from historic inns to upscale hotels with the most urban amenities. Fine dining, en-suite kitchens, conference facilities, and fitness centers make these accommodations anything but sleepy.

We're also highly functional! More than 200,000 square feet of meeting spaces are suitable for events ranging from intimate gatherings to major trade shows. To learn more about MetroWest's function space, please see the chart on page 36.

Need room? No problem. More than 6,000 rooms from newly designed to the oldest inn in operation, welcome guests daily. Top photo: John Skelnak courtesy Longfellow's Wayside Inn; Residence Inn Boston Natick, JS Photography; Distinctive Hospitality Group.

ASHLAND

Warren Conference Center & Inn

529 Chestnut Street, Ashland 01721 • 508-231-3000 www.warrencenter.com
 Located on over 100 wooded acres, we are the perfect location for meetings, retreats, reunions, weddings, and special events. The Inn offers world-class service and attention to detail.

FRAMINGHAM

Edwards Meeting House & Retreat Center

1 Badger Road, Framingham 01702 • 508-875-5233 www.edwardshouseframingham.org
 Edwards House offers fully equipped meeting space for working gatherings, large and small, and an intimate setting for small overnight retreats. The setting on 113 acres of woods and meadows is conducive to conversation, contemplation, and community.

Motel 6 Framingham

1668 Worcester Road, Framingham 01702 • 508-620-0500 www.motel6.com

Red Roof PLUS Boston-Framingham

650 Cochituate Road, Framingham 01701 • 937-328-1448 www.bostonframingham.redroof.com

Residence Inn Boston Framingham

400 Staples Drive, Framingham 01701 • 508-370-0001 www.marriott.com/bosfm
 Located at the intersection of the Mass Pike (I-90) and Route 9, we are conveniently located to many corporations. Featuring newly renovated studio, one-bedroom, and two-bedroom suites with fully equipped kitchens, complimentary full hot buffet breakfast, and internet.

Sheraton Framingham Hotel & Conference Center

1657 Worcester Road, Framingham 01701 • 508-879-7200 www.sheratonframingham.com
 Located 18 miles from downtown Boston, state-of-the-art executive meeting facility, top choice for business or leisure, upgrade to our new club experience. Renovated guest rooms with complimentary enhanced Wi-Fi and 50" flat-screen HD television.

FRANKLIN

Hampton Inn Franklin/Milford

735 Union Street, Franklin 02038 • 508-520-2999 www.franklinma.hamptoninn.com
 Located off Route 495 at Exit 16. Enjoy close proximity to Wrentham Outlets and Dean College. One mile from MBTA Commuter Rail to Boston. Easy drive to Providence. Walk to restaurants. Entire hotel newly renovated.

Hawthorn Suites by Wyndham Franklin

835 Upper Union Street, Franklin 02038 • 508-553-3500 www.hawthorn.com/franklin
 Experience the comforts of home in our kitchenette suites. We are right off Interstate 495—20 miles from Providence and 40 miles from Boston—near the area's best shopping and attractions, such as Southwick's Zoo, Dean College, and Wrentham Outlets.

Residence Inn by Marriott Franklin

4 Forge Parkway, Franklin 02038 • 508-541-8188 www.marriott.com/bosfr
 Located between Boston and Providence, this beautifully renovated property is ideal for relocation, long business trips or leisure travel. Our all-suites hotel offers rooms with fully equipped kitchens; separate living, eating, and sleeping areas; and high-speed Internet.

HUDSON

Holiday Inn Express

121 Coolidge Street, Hudson 01749 • 978-562-1001 www.expressmarlboro.com

MARLBOROUGH

Best Western Royal Plaza Hotel and Trade Center

181 Boston Post Road, Marlborough 01752 • 508-460-0700 www.rplazahotels.com
 Located off Routes I-495 and I-90, we provide the ultimate customer service, with 22,000 square feet of flexible meeting space. Near shopping and golf, we are the perfect venue for your next meeting or social event.

Courtyard by Marriott/Marlborough

75 Felton Street, Marlborough 01752 • 508-480-0015 www.courtyardmarlborough.com
 In the heart of Central Massachusetts between Worcester and Boston, with easy access to routes I-495, 20, and I-90, you will find a variety of area attractions. Our modern, spacious guestrooms provide a tranquil retreat after a long day.

Embassy Suites Boston - Marlborough

123 Boston Post Road West, Marlborough 01752 • 508-485-5900 www.bostonmarlborough.embassysuites.com
 Stretch out in an all-suite, full-service hotel less than 45 minutes from Logan Airport and just off I-495. Enjoy a complimentary cooked-to-order breakfast and end the day with sizzling steaks and American favorites at Corcoran's Restaurant.

Extended Stay America Marlborough

19 Northborough Road East, Marlborough 01752 • 508-490-9911 www.extendedstayamerica.com/hotels/ma/boston/marlborough
 Our recently renovated hotel is designed especially for longer stays with studio suite rooms featuring a fully-equipped kitchen...something you won't find in a typical hotel.

Fairfield Inn & Suites Boston Marlborough Apex Center

105 Apex Drive, Marlborough 01752 • 508-720-1500 • www.marriott.com/bosmf
www.extendedstayamerica.com/hotels/ma/boston/marlborough
 Located in the new Apex retail, entertainment, and dining center, we offer 108 guest rooms and suites. 525 square feet of flexible meeting space, convenient to sports facilities, Marlborough office parks, and major roadways.

Hampton Inn Marlborough

277 Boston Post Road West, Marlborough 01752 • 508-787-9888 www.hamptoninn.hilton.com/Marlborough
 Central to more than 30 businesses, our hotel invites guests in our rooms and suites to savor free, hot breakfast in our dining room. Or, on weekdays, simply grab a free, healthy Hampton On the Run® Breakfast Bag.

Hilton Garden Inn Boston/Marlborough

170 Forest Street, Marlborough 01752 • 508-251-6706 www.bostonmarlborough.hiltongardeninn.com
 So much to enjoy! BLVD Kitchen & Bar serves fantastic meals all day; the patio with firepit is great for cocktails and conversation. Fitness center, heated indoor pool, and 4,800 square feet of meeting space.

Holiday Inn Marlborough

265 Lakeside Avenue, Marlborough 01752 • 508-481-3000 www.holidayinnmarlborough.com
 We are ideally situated in the heart of New England, just 28 miles from Boston. The four-story, 100% smoke-free Inn offers the finest facilities, the ultimate in comfort, and the best service, amounting to great value.

Hyatt Place Marlborough Apex Center

169 Apex Drive, Marlborough 01752 • 508-506-1800 www.hyattplacemarlbroughapexcenter.com
 The city's newest hotel, in the entertainment and retail complex, conveniently located off I-495. 137 guest rooms and suites, fine dining, and 1,100 square feet of flexible meeting space meet every leisure and business traveler's needs.

Quality Inn Express Marlborough

880 Donald Lynch Boulevard, Marlborough 01752 • 508-460-1000 www.choicehotels.com/massachusetts/marlborough/quality-inn-hotels
 The Quality Inn® is 15 minutes from Worcester and 45 minutes from Boston.

Residence Inn Boston Marlborough

112 Donald Lynch Boulevard, Marlborough 01752 • 508-481-1500 www.marriott.com/bosmb
 We've perfected the extended-stay experience by combining home comforts with a passion for making guests feel welcome. Our all-suite hotel is across from N.E. Sports Center and close to Solomon Pond Mall and Worcester.

The VERVE Hotel has joined
Tapestry Collection by Hilton.

Stop in and see what's new!

THE
VERVE[™]
HOTEL
TAPESTRY COLLECTION
by Hilton[™]

1360 Worcester Street, Natick MA
VERVEHotelNatick.com
508.653.8800

WELCOME
TO THE PATRIOT
STATE 

Affordable,
Free Breakfast,
Free WiFi
**100% HAMPTON
GUARANTEE**



319 Speen Street, Natick MA
Boston-Natick.HamptonInn.com
508.653.5000



Let the Games
BEGIN!

Boston's Best Sports Grill
for Fun, Food & Friends

Best Burgers in
MetroWest

SKYBOKX 109
Sports Bar & Grill

319 Speen Street, Natick MA
SKYBOKX109.com | 508.903.1600

MILFORD

Best Western Milford Inn

3 Fortune Boulevard, Milford 01757 • 508-634-2499 www.bestwestern.com
 Sure to provide a peaceful and comforting home away from home for any traveler. With cleanliness and value being our top priority, we ensure a restful and productive stay.

Courtyard by Marriott Boston/Milford

10 Fortune Boulevard, Milford 01757 • 508-634-9500 www.milfordcourtyard.com
 Newly renovated and just 30 miles to both Boston and Providence, RI, our hotel features inviting flexible spaces to work and relax. Enjoy our Bistro Restaurant, 24-hour Starbucks, and our free Wi-Fi.

DoubleTree by Hilton Hotel Boston - Milford

11 Beaver Street, Milford 01757 • 508-478-7010 www.bostonmilford.doubletree.com
 Located just off I-495, convenient to Worcester, Boston, and Providence, the DoubleTree offers an indoor pool, fitness center, and business center. Join us at our Il Cigno Restaurant or Legends Sports Bar and Grille.

Fairfield Inn & Suites by Marriott

1 Fortune Boulevard, Milford 01757 • 508-478-0900 www.marriott.com/bosnm
 Ideal for business or leisure, our spacious rooms make it easy to relax. Complimentary continental breakfast and Internet, indoor pool, and suites with microwaves and refrigerators make us ideal for sports groups or weddings and other social gatherings.

Holiday Inn Express Boston-Milford Hotel

50 Fortune Boulevard, Milford 01757
 508-634-1054 www.hiexpress.com/milfordma
 Newly renovated hotel with a sparkling indoor heated pool, whirlpool, fitness center and guest lobby. Our rooms feature modern decor with microwaves, and refrigerators. Accommodations include free WIFI and a full hot breakfast buffet.



NATICK

Hampton by Hilton, Boston-Natick

319 Speen Street, Natick 01760 • 508-653-5000 www.bostonnatick.hamptoninn.com
 Located near Boston in historic Natick. Free shuttle to office parks, shopping, and dining. Walk to Natick Mall. Close to Babson College, Walnut Hill School for the Arts, and Framingham State University. Commuter Rail to Boston.

Courtyard Boston Natick

342 Speen Street, Natick 01760 • 508-655-6100 www.courtyardbostonnatick.com
 Our hotel has the tools you need to get work done. Offering free high-speed Internet, ergonomic desk chairs, well-lit desks, and on-site business services and meeting rooms, our suburban hotel is perfect for the frequent business traveler.

Residence Inn Boston Natick

1 Superior Drive, Natick 01760 • 508-651-5250 www.marriott.com
 Extended stay hotel near Boston featuring free breakfast, free wifi and free parking. Close to the Natick mall and local businesses such as Mathworks, Bose Corporation and the TJX Companies.

The VERVE Hotel Boston Natick, Tapestry Collection by Hilton

1360 Worcester Road, Natick 01760 • 508-653-8800 www.vervehotelnatick.com
 Easy access to Boston, off the Mass Pike. Perfect for leisure and business travelers. WIFI, 24-hour fitness room, restaurant, and lounge. Free shuttle to office parks, shopping, dining. Across the street from Natick Mall.

SHERBORN

Heritage of Sherborn

33 North Main Street, Sherborn 01770 • 508-655-9521 www.heritageofsherborn.com
 Join us at our Inn and enjoy a comfortable private room with a gastro-pub, wedding venue, and a Coffee, Wine, & Provisions store on the premises. Private rooms with private bath. Includes \$10 gift certificate for coffee and pastries.

Residence INN
 BY MARRIOTT
BOSTON NATICK

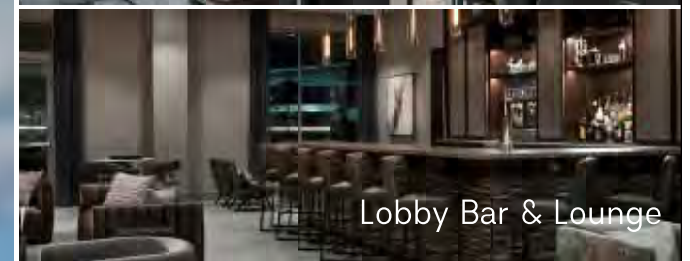
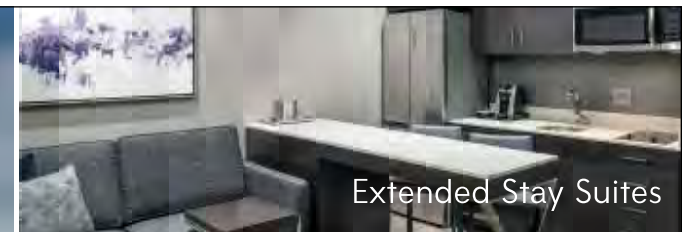
Complimentary Amenities:

- 24 Hour Fitness Center
- 24 Hour Business Center
- Grocery Shopping Service
- Hot Breakfast Buffet
- Onsite Parking
- Enhanced WiFi

MARRIOTT BONVOY

NOW OPEN

1 Superior Drive, Natick, MA 01760
 508.651.5250 | ResidenceInnNatick.com



ASHLAND FRAMINGHAM	Warren Conference Center & Inn	58		10,000	7		
	Edwards Meeting House & Retreat Center	7	+	2,500	5		
	Residence Inn Boston Framingham	125	+	650	1	+	+
FRANKLIN	Sheraton Framingham Hotel & Conference Center	375	+	22,000	20	+	+
	Hampton Inn Franklin/Milford	94		720	2		+
	Hawthorn Suites by Wyndham Franklin/Milford	100		1,000	3	+	+
MARLBOROUGH	Residence Inn Boston Franklin	108	+	400	1	+	+
	Best Western Royal Plaza Hotel & Trade Center	431	+	Hotel: 20,000 Trade Center 47,500	21	+	+
	Courtyard Boston /Marlborough	202	+	8,000	11	+	+
	Embassy Suites Boston-Marlborough	229	+	3,545	6	+	+
	Extended Stay America Boston-Marlborough	135		—	—	+	
	Fairfield Inn & Suites Boston Marlborough Apex Center	108	+	525	1		+
	Hampton Inn Marlborough	144		577	1		
	Hilton Garden Inn Boston / Marlborough	160	+	4,800	9		+
	Holiday Inn & Suites Marlborough	172	+	5,400	11		+
	Hyatt Place Marlborough Apex Center	137	+	1100	4	+	+
	Quality Inn Marlborough	65		—	—		
	Residence Inn Boston Marlborough	112		250	1	+	+
	MILFORD	Courtyard by Marriott/Milford	140	+	1,250	3	
DoubleTree by Hilton Hotel Boston-Milford		176	+	7,800	10		
Holiday Inn Express / Milford Hotel		119		500	1	+	+
NATICK	Courtyard Boston/Natick	176	+	2,426	3		
	Hampton Inn Boston/Natick	188	+	9,151	11		
	Residence Inn Boston Natick	136	+	3800	4	+	
	VERVE Boston Natick , Tapestry Collection by Hilton	251	+	17,000	10	+	
SHERBORN SOUTHBOROUGH	Heritage of Sherborn	4	+	14-120ppl	3		
	Red Roof Inn Southborough	108		—		+	
SUDBURY	Wayside Inn	9	+	3,500	5		
	Fairfield Inn Boston Sudbury	48		—			
WESTBOROUGH	Courtyard by Marriott Westborough	106	+	600	1		
	Doubletree by Hilton Hotel Boston Westborough	223	+	11,400	16		+
	Hampton Inn Boston Westborough	106	+	588	1		+
	Residence Inn Boston Westborough	100		320	1	+	+
	Westborough Inn	25					

SOUTHBOROUGH

Red Roof Inn
 367 Turnpike Road, Southborough 01772 • 508-481-3904 www.redroofinn.com
 Located 14 miles from Worcester and 28 miles from Boston, our hotel offers flat-screen TVs in all rooms and is just minutes from Tufts Vet School, New England Sports Complex, The Fay School, St. Mark's, and Boston Marathon start line.

SUDBURY

Fairfield Inn Boston Sudbury
 738 Boston Post Road, Sudbury 01776 • 978-443-2223 www.fairfieldinnbostonsudbury.com
 This newly refurbished boutique hotel offers the comforts and conveniences essential to today's traveler. Located along historic Boston Post Road, the Fairfield Inn offers diverse amenities in an elegant and relaxed suburban setting.

Inn on the Horse Farm
 277 Old Sudbury Road, Sudbury 01776 • 978-443-7400 www.innonthehorsefarm.com

Longfellow's Wayside Inn
 72 Wayside Inn Road, Sudbury 01776 • 978-443-1776 www.wayside.org
 We are America's oldest operating Inn. Whether for a weekend getaway, a special retreat, or simply a quiet evening, the Inn offers a classic New England B&B experience. Each guestroom has views of wooded grounds filled with gardens, charming buildings, and historic spaces.

WESTBOROUGH

Courtyard by Marriott Westborough
 3 Technology Drive, Westborough 01581 • 508-836-4800 www.marriott.com/bosbr

Recently refreshed in the public areas, media pod stations, and The Bistro (offering breakfast and light dinner fare), we are nestled in a suburban oasis in Technology Park, with easy access to Routes I-495, 9, and I-90.

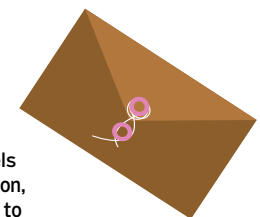
DoubleTree by Hilton Hotel Boston - Westborough
 5400 Computer Drive, Westborough 01581 • 508-366-5511 www.bostonwestborough.doubletree.com
 Conveniently located on Route 495 and the Massachusetts Turnpike. Hotel offers 223 sleeping rooms and over 13,000 square feet of meeting space. Restaurant, lounge, and an indoor pool and fitness center.

Extended Stay America
 1800 Computer Drive, Westborough 01581 • 508-366-6100 www.extendedstayamerica.com
 180 E Main Street, Westborough 01581 • 508-616-9213 www.extendedstayamerica.com
 19 Connector Road, Westborough 01581 • 508-616-0155 www.extendedstayamerica.com/hotels/ma/boston/westborough-connector-road

Hampton Inn Boston-Westborough
 15 Connector Road, Westborough 01581 • 508-329-5570 www.bostonwestborough.hamptonbyhilton.com
 Westborough's newest hotel, we invite guests to stay in one of our 106 well-equipped guest rooms or suites, enjoy our complimentary full hot breakfast, and take a swim in our heated indoor pool.

Marriott Courtyard Boston Westborough
 3 Technology Drive, Westborough 01581 • 508-836-4800 www.courtyardwestborough.com

Residence Inn by Marriot Boston Westborough
 25 Connector Road, Westborough 01581 • 508-366-7700 www.marriot.com/hotels
 Find your travel balance at Residence Inn in Westborough, situated between Worcester, Boston, and Providence. Our all-suite extended stay accommodations boast ergonomic work spaces to increase productivity. Prepare home-cooked meals in the suite's fully equipped kitchen.



OUR GIFT TO YOU
 Book your wedding with us and receive one of the following:

- 10% Off Entrée Price
- 2 Complimentary Guestrooms
- Back Drop with Lights
- Chiavari Chairs

DoubleTree by Hilton Boston/Westborough
 5400 Computer Dr., Westborough, MA 01581
 508-366-5511 | www.bostonwestborough.doubletree.com

*Contract must actualize with a minimum revenue value of \$7,000 prior to taxes and service charges to be eligible. Group or event must actualize on or before 12/31/16. Must mention "Our Gift To You" promotion at the time of the booking.

REWARD YOURSELF
 60,000 Hilton HHonors Points
 or
 a \$300.00 Visa Gift Card

It's your choice when you secure a group or event with us.

DoubleTree by Hilton Boston/Westborough
 5400 Computer Dr., Westborough, MA 01581
 508-366-5511 | www.bostonwestborough.doubletree.com

*Contract must actualize with a minimum revenue value of \$3,000 prior to taxes and service charges to be eligible. Group or event must actualize on or before 2/28/16. Must mention "Reward Yourself" promotion at the time of the booking.

Based on availability and subject to change. Not to be combined with any other promotion, must mention ad at the time of booking. New business only.



15 Connector Road | Westborough, MA 01581 | 508-329-6033
www.hampton.com



The way we work

With a very low unemployment rate, and a high rate of new businesses, MetroWest is the economic engine of Massachusetts.

As the home of Fortune 500 companies and world-class technology enterprises, our region's businesses are constantly creating services with a level of sophistication and convenience demanded by visitors and residents. Rounding out our commerce are tens of thousands of smaller businesses, some centuries-old and some brand-new!

Helping supply this growing and highly educated workforce are colleges and universities based in our region. The fine K-12 public schools are augmented by prominent private schools attracting students from around the nation and the world.

Town centers remain the cornerstone of commerce for our municipalities. Centuries-old downtowns literally remain the intersection of entrepreneurship and the thriving financial and professional businesses that make our communities work. Whether you're looking for health and wellness services, local media, or nonprofit organizations, you'll be thrilled by the company we keep here in MetroWest.

From transportation to translation . . . it's all here. Top: Logan Express offers easy convenient travel to Logan Airport. Bottom: The Learning Center for the Deaf is the largest provider of services to deaf and hard of hearing children in New England, it is also the largest private employer of Deaf individuals in Massachusetts.

EDUCATION

Christa McAuliffe Charter School

139 Newbury Street, Framingham 01701 • 508-879-9000 www.mcauliffecharter.org
An Expeditionary Learning school for grades 6-8, McAuliffe offers a hands-on curriculum that inspires high achievement through active learning, character growth, and teamwork. We cultivate within our diverse student body, an intense commitment to self and community.

Clark University Graduate School of Management

333 Turnpike Road, Southborough 01772 • 508-281-0300 www.clarku.edu

Dean College

99 Main Street, Franklin 02038 • 1-877-TRY-DEAN www.dean.edu
A private residential college fostering academic and personal success, Dean College offers a variety of associate degree programs, transfer preparation for four-year institutions, and baccalaureate degrees.

Fay School

48 Main Street, Southborough 01772 • 508-485-0100 www.fayschool.org
An independent, coeducational day and boarding school, we are a traditional yet contemporary independent school that teaches enduring skills for a changing world.

Framingham State University

100 State Street, Framingham 01702 • 508-620-1220 www.framingham.edu
Offering small, personalized classes to undergraduate and graduate students on a beautiful, traditional New England campus. As a public university, Framingham State prides itself on its quality academic programs, affordability, and commitment to access for all qualified students.

Kumon

1164 Worcester Road, Framingham 01702 • 508-875-0552 www.kumon.com/framingham

The Learning Center for the Deaf

848 Central Street, Framingham 01701 • 508-879-5110 www.tldeaf.org
Ensuring that deaf and hard-of-hearing students achieve their full potential in an educational environment where language and communication are keys to building competence, character, and community.

MassBay Community College

19 Flagg Drive, Framingham 01702 • 508-270-4000 www.massbay.edu
50 Oakland Street, Wellesey 02481 • 781-239-3000 www.massbay.edu
We offer associate degree and certificate programs, credit, non-credit, and online courses in over 70 areas of study at our campuses in Framingham, Ashland, and Wellesley.

Massachusetts International Academy

280 Locke Drive, Marlborough 01752 • 508-229-6300 www.english.maiaedu.org

Nichols College

129 Center Road, Dudley 01571 • 800-470-3379 www.nichols.edu

RSM School of Math

5 Auburn Street, Framingham 01701 • 508-283-1355 www.metrowestschool.com
An after-school educational program for children in grades K-12 that offers top-quality instruction in mathematics, SAT preparation, chess, creative writing, and more. It is an affiliate of the Russian School of Mathematics.

S.E.T. School of MetroWest

100 Waverly Street, Ashland 01721 • 508-231-4500 www.setschoolmw.com

St. Mark's School

25 Marlboro Road, Southborough 01772 • 508-786-6000 www.stmarkschool.org

Summit Montessori School

283 Pleasant Street, Framingham 01701 • 508-872-3630 www.summitmontessori.org
Summit Montessori School is a community dedicated to developing respectful, self-motivated, life-long learners. Through a challenging, individualized, Montessori-based curriculum, children cultivate their strengths to reach their unique potential and to become active participants in the global community.

The Tobin School

73 Cottage Street, Natick 01760 • 508-655-5006 www.thetobinschool.org

Tremont School

57 Brown Street, Weston 02493 • 781-235-4805 www.tremontschool.org

Walnut Hill School for the Arts

12 Highland Street, Natick 01760 • 508-653-4312 www.walnuthillarts.org
Walnut Hill School for the Arts offers a unique combination of academic rigor and artistic excellence for day and boarding students grades 9-12. Performances and exhibitions are open to the public, many free of charge.

FINANCIAL SERVICES

Align Credit Union

969 Concord Street, Framingham 01701 • 800-942-9575 www.aligncu.com

Avidia Bank

Framingham, Hudson, Marlborough, Northborough, Westborough • 800-508-2265 www.avidiabank.com
Avidia Bank is a full-service, \$1.1-billion mutual community bank serving MetroWest and Central Mass. We provide the best in banking to consumers and businesses. We are a proud community partner.

DCU—Digital Federal Credit Union

60 Worcester Road, Framingham 01702 • 508-820-1252 www.dcu.org
Owned and operated by our 500,000 members since 1979, DCU provides a wide variety of consumer and business banking, lending, and insurance services.

Kahn, Litwin, Renza (KLR)

800 South Street, Suite 300, Waltham 02453 • 781-547-8800 www.KahnLitwin.com
Providing the highest quality accounting, tax, and advisory services for over 40 years. Boston, Providence, Shanghai, Newport, Waltham.

Middlesex Savings Bank

6 Main Street, Natick 01760 • 508-315-5360 www.middlesex.org
162 Cordaville Road, Southborough 01772 • 508-460-7036 www.middlesex.com
With 30 branches and five business-lending centers, we are one of the state's largest and strongest banks and remain very much community-oriented by providing significant financial support to the community.

Moody Street Group

134 Rumford Avenue, Suite 201, Newton 02466 • 617-916-5155 www.moodystreet.com
We are a financial services firm assisting our clients in reaching their personal and business goals and helping them secure their financial future.
Note: Registered Representative of and securities offered through OneAmerica Securities, Inc., member FINRA, SIPC, a Registered Investment Advisor, 134 Rumford Ave., Suite 201, Newton, MA 02466, 6170916-5155. Insurance Representative of American United Life Insurance Company (AUL) and other insurance companies. The Moody Street Group, LLC is not an affiliate of OneAmerica Securities or AUL and is not a broker dealer, or a Registered Investment Advisor.

Mutual One Bank

828 Concord Street, Framingham 01702 • 866-322-1889 www.framinghamcoop.com

Needham Bank

1063 Great Plain Avenue, Needham 02192 • 781-444-2100 www.needhambank.com
857 Main Street, Millis 02054 • 508-376-8759 www.needhambank.com
41 Front Street, Ashland 01721 • 508-881-1088

Our long-term commitment to our customers is shown through our personalized service, competitive products, and deep community involvement. We make banking a more pleasant experience. With MetroWest branches in Natick, Millis, Ashland, Needham, and Wellesley.

Northeast Community Bank

35 Edgell Road, Framingham 01701 • 508-879-0006 www.necommunitybank.com

St. Mary's Credit Union

Framingham, Hudson, Marlborough, Westborough, Northborough • 508-490-8000 www.stmaryscu.org

Symphony Employer Solutions

6 Huron Drive, Natick 01760 • 508-652-8007 www.symphonyes.com

Symphony is an orchestra of experienced professionals providing organizations of all sizes and complexity with scalable, effective integrated solutions supported with personal concierge service.

TD Bank

Ashland, Framingham, Wayland, Sudbury, Wellesley, Holliston, Marlborough
888-751-9000 • www.tdbank.com

TD Bank, America's Most Convenient Bank, is one of the ten largest banks in the U.S., providing more than eight million customers with a full range of retail, small business and commercial banking products and services.

Webster First Federal Credit Union

22 South Street, Suite 106, Hopkinton 01748 • 508-671-5185
www.websterfirst.com

A credit union that puts you first. Visit our Hopkinton branch located at 22 South Street (in the Price Chopper shopping plaza), and enjoy convenient features such as drive-up teller and 24 hour walk-up ATM!

Wellesley Bank

40 Central Street, Wellesley 02482 • 781-489-7647 www.wellesleybank.com



BUSINESS & PROFESSIONAL SERVICES

495/MetroWest Partnership

200 Friberg Parkway, Westborough 01581 • 774-760-0495 www.495partnership.org

The 495/MetroWest Partnership, through a unique public-private collaboration with businesses, municipalities, and other stakeholders, is the regional leader for creating an environment that prepares for and cultivates sustainable growth in 34 municipalities.

All-Family Insurance

34 Hayden Rowe Street, Hopkinton 01748 • 508-244-4128 www.allfamilyinsurance.ne

Ashland Business Association

Ashland 01721 • www.ashlandbusinessassociation.com

Find local businesses through our online directory. The ABA is a group of business owners, executives, managers, and employees working together to foster ties between business and community.

Assabet Valley Chamber of Commerce

8 Church Street, # 2, Hudson 01749 • 978-568-0360 www.assabetvalleychamber.org

We represent over 500 businesses and nonprofits from more than 30 communities. Our mission is to represent business and promote, education, and network our members and the Assabet Valley region at large.

Bellingham Business Association

Box 77, Bellingham 02019 • www.bellinghambusinessassociation.org

The BBA provides networking and professional development opportunities for local businessmen and women in a relaxed and engaging setting. Dinner meetings are held monthly, September-June, generally on the second or third Wednesday of the month.

Boston Technology Advisors

62 Lanewood Avenue, Framingham 01701 • 508-405-2460 www.bta-it.com

The mission of The Learning Center for the Deaf is to ensure that all deaf and hard of hearing children and adults thrive by having the knowledge, opportunity, and power to design the future of their choice.



**THE LEARNING CENTER
FOR THE DEAF**

Audiology | Sign Language Interpreting | Deaf Education
Behavioral Health | And More

848 Central Street • Framingham, MA 01701
www.TLCDEAF.org

RETAIL BUSINESS OWNERS —

Is your business space . . .

too **BIG**
or too small



It's time to take a new look at your retail business space!

RETAIL PROPERTY OWNERS —

Great tenants make higher property values!



Your investment today will bring you a long term benefit.

RETAIL REAL ESTATE ADVISORS 508.254.7676 | RETAILRE.COM

Bowditch Attorneys

200 Crossing Boulevard, Suite 300, Framingham 01702 • 508-879-5700 www.bowditch.com
 Guided by three tenets – diligence, expertise, and insight – the law firm of Bowditch & Dewey has been helping clients achieve their business goals for 100 years.

Cheever Industries

30 Main Street rear, Ashland 01721 • 508-231-8800 www.cheeverind.com

Choose Framingham

150 Concord Street, Framingham 01702 • 508-532-5455 www.chooseframingham.com
 A program of the Framingham Office of Community and Economic Development, Choose Framingham offers a website listing resources for living, working, playing, learning, and enjoying Framingham.

Complete Technology Resources / CTR

2 Mount Royal Ave, Suite 350, Marlborough 01752 • 508-909-5961 www.completetechnologyresources.com
 CTR is an IT Cloud First, Solutions company. We focus on network, cloud and communication system solutions that fit your company's needs today and anticipate tomorrow's challenges.

ConnectPay Payroll Services

10 Fiddleneck Lane, Southborough 01772 • 508-439-4730 www.connectpayusa.com
 Where your dedicated customer-service rep knows you and your business. Welcome to a world of integrated payroll services where we communicate with your trusted team of advisors. Contact Sheldon for a no-cost or obligation payroll comparison.

Corridor 9/495 Regional Chamber of Commerce

30 Lyman Street, Westborough 01581 • 508-836-4444 www.corridornine.org

CTM Media Group, Inc.

30B Sixth Road, Woburn 01801 • 617-275-5894 www.etractions.com www.ctmmediagroup.com
 CTM is one of the largest distributors of visitor and tourism information in North America with over 19,000 brochure and digital information displays in hotels, airports, transportation centers and visitor centers.

Cynthia Whitty Communications

148 Concord Street, Ashland 01721 • 508-881-6297 www.facebook.com/pages/Cynthia-Whitty-Communications

Dennehy Public Relations

45 Village Street, Medway 02053 • 508-533-8311 www.dennehypr.com

E-motion Computer Services

356 Woodland Street, Holliston 01746 • 508-429-3210 www.e-mcs.com

Fair & Yeager Insurance Agency

10 Main Street, Natick 01760 • 508-653-3131 www.fyins.com
 Fair & Yeager Insurance, a third-generation independent insurance agency established in 1898 serving the community on Main Street in Natick for over a century. For all your insurance needs: auto, home, life, and business.

Fitts Insurance Agency

2 Willow Street, Suite 102, Southborough 01745 www.fittsinsurance.com
 We don't just offer insurance, we build long-term relationships for personal and business growth and success. Our skilled staff has the expertise and experience to guide and advise you in developing your insurance strategies.

Fletcher Tilton PC

161 Worcester Road, Framingham 01701 • 508-532-3500 www.flechertilton.com

Franklin Downtown Partnership

9 East Central Street, Franklin 02038 • 774-571-3109 www.franklindowntownpartnership.org
 Franklin Downtown Partnership is a pro-active organization that brings residents, business owners and community leaders together, encourages cooperation, and builds leadership for the purpose of revitalizing downtown Franklin.

Freedom Digital Printing

200 Butterfield Drive, Unit A2, Ashland 01721 • 508-881-6940 www.freedomdigitalprinting.com



AshlandBusinessAssociation.com



- 126 Self Storage
- Adam Sachs, Centinel Financial Group
- AdviCoach, Ken Erdelt
- Amy Sayed
- Annemarie's Dance Centre
- AnyFence LLC
- Apex Sign Company
- Ashland Cable Access Corp.
- Ashland Community Acupuncture
- Ashland Diesel Inc.
- Ashland Early Education
- Ashland Emergency Fund
- Ashland Family Eyecare
- Ashland Farmers Market
- Ashland Historical Society
- Ashland Insurance Center Inc.
- Ashland Mini Storage Inc.
- Ashland Pet Concierge
- Ashland Reiki & Wellness Center
- Ashland Sporting Association
- Back Stage Dance Center
- Bill Gath, Realtor
- Burnam's 1742 Manor
- CalculatorSoup
- Cindy Crowninshield, Dietician
- Clocktown Liquors
- Coach Andrea
- College Solutions
- Contemporary Closets & Storage
- CPR Services
- Critical Prism Defense LLC
- Cynthia Whitty Communications
- Dairy Queen
- Darren Breault, Fine Builder
- David Rucando, Attorney
- DeChristopher Law Office
- Decisions at Every Turn Coalition
- Di's Little Friends Playcare
- Diversity Early Learning Center
- Dulce D Leche
- Dorogan Ramen (f/n/a Noodle City)
- Dr. Green's Indoor Golf
- Eagle Troop Properties
- Earthly Wealth Jewelry
- Ellen Beyerle, Cabi Clothing Stylist
- Expedia CruiseShip Centers
- Express Payroll
- Fish Works
- Fitness Together
- Framingham State University
- Freedom Digital Printing
- Friends of The Ashland Library
- Galaxsea Travel
- Gary's Cleaning Service
- GMT Home Designs Inc.
- Gordon Multimedia LLC
- GYMGUYZ Boston Metro South
- Habitat for Humanity
- Happy Tails Dog Walking
- Hot Plates Sign Company
- Inkind Design
- Judi Teller, Realtor
- Julie's Z Breads
- Kleidiane Torres, Realtor
- M & M Moving Co
- Main Street Wine & Spirits
- Martin Shapiro
- Mastodon Moving
- MDM Realty Inc
- Metro West Bookkeeping & Tax Service
- MetroWest YMCA Outdoor Center
- Mexico City Taqueria
- Middlesex Mattress Outlet LLC
- Middlesex Savings Bank
- Mindfulfilled Mediation, LLC
- Modelville Hobby
- Murphy's Eats & Treats
- N.E.C. Trophies
- Needham Bank
- New Creations Salon
- NightLife Oil Burner Service Inc
- Oak Realty
- Our Town Publishing
- Perpetual Motion Media
- Platinum Physical Therapy of Ashland
- Practice of Family Cosmetic Dentistry
- Protegro, Wendy Pyne
- Putts & More Family Fun Center
- Quick Appliance Service
- Reliv International
- RF Venue Inc
- Ryan Insurance Agency Inc.
- Salon 44
- Smooth Transitions of MA, LLC
- SolarFlair Energy Inc.
- Sounding Hill LLC
- Spyglass Printing & Promotion
- Stone's Public House
- Sunnyside Cafe
- Susan C. Atherton, Attorney
- The Bagel Table
- The Bulfinch Group
- The Dream Factory
- The Embroidery Place
- The Family Pet Hospital
- The Organizing Bookkeeper
- The Warren Conference Center & Inn
- Thomas DeAlmeida, Electrician
- Three Fields Acupuncture
- Town of Ashland (Economic Development)
- Town of Ashland (Select Board)
- Town of Ashland (Town Manager)
- Tricia Kendall, Architect
- United Home Experts
- Valerie Gaines, Reiki Practitioner
- WAITT (We're All in This Together)
- Walter Piasecki, Chiropractic MD
- Warren Home Inspections

BUY LOCAL
#SHOPABA



@ASHLANDBUSINESSASSOCIATION

Holliston Business Association

Holliston 01746 • 508-429-3210 www.hollistonbusinessassociation.com

Hopkinton Chamber of Commerce

PO Box 55, Hopkinton 01748 • www.hopchamber.com

The Chamber of Commerce is dedicated to helping Hopkinton businesses succeed by supporting and advocating for an environment where members and their communities prosper.

Jonatan Dalla Costa Allstate Insurance

2 Franklin Commons, Framingham 01702 • 508-875-3488
www.agents.allstate.com/jonatan-dalla-costa-framingham-ma

Levine Design & Illustration

617.875.2195 www.levinedesign.net

Mapa Translations

302 Union Ave, Suite 1, Framingham 01701 • 508-309-6309 www.mapatranslation.com

A full service agency providing written translation and localization, in person and over the phone interpreter services, and multilingual voice-overs.

Marlborough Regional Chamber of Commerce

11 Florence Street, Marlborough 01752 • 508-485-7746 www.marlboroughchamber.org

Our mission is to promote and advocate for our members' business and civic interests and to collaborate with the communities for the overall economic benefit of the region.

MetroWest Chamber of Commerce

860 Worcester Road, Framingham 01702 • 508-879-5600 www.metrowest.org

Driving the economic vitality of our communities through the power of connection, we serve more than 500 member organizations ranging from sole proprietorships and small/mid-tier businesses to Fortune 100 enterprises, municipalities, and not-for-profit organizations.

Milford Area Chamber of Commerce

258 Main Street, Suite 306, Milford 01757 • 508-473-6700 www.milfordchamber.org

A diverse group of the area's top business leaders working to enhance business opportunities and create a positive economic climate.

Mirick O'Connell Attorneys-at-Law

1800 West Park Drive, Suite 400, Westborough 01581 • 508-898-1501 www.mirickoconnell.com

Mirick O'Connell counsels New England's leading corporations — private and public — and individuals across a wide range of industries.

Murphy Insurance Agency

MetroWest locations in Marlborough, Hudson, and Medway • 800-222-8711 www.dfmurphy.com

Natick Center Associates

20 Main Street, Suite 208, Natick 01760 • 508-650-8848 www.natickcenter.org

Natick Center is the heart of the Natick community and a designated Massachusetts Cultural District! Natick Center Associates is a nonprofit public-private partnership committed to making downtown Natick a vital, exciting place to live, work, and visit.

Out of Office Coworking

43 Broad Street, 3rd Floor, Hudson 01749 www.outofofficecoworking.com

Are you looking for a zen place to work, a dedicated desk, or a private office? At Out of Office Coworking, you'll be right on the doorstep of restaurants, gyms, yoga studio, and shops.

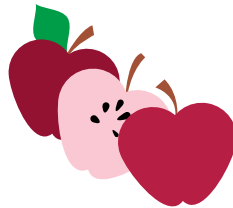
Sid Simone Staffing

330 Cochituate Rd #1032, Framingham 01701 • 734-402-7276 www.sidsimone.com

Strategic Payment Systems

45 Dan Road, Canton 02021 • 781-828-2523 www.spsprocessing.net

Strategic Payments Systems, Inc. is a full service provider of cost effective, leading class products to merchants, sales offices, financial institutions and associations. SPS, headquartered in Canton, Massachusetts, is known for quality products, superior service, strong relationships and stability.

**Quintessential Coaching**

Marlborough 01752 • 774-249-4976 www.quintessential-coaching.com

V.I.P. Freelance Studios

Marlborough 01752 • 508-797-2855 www.vipfreelancestudios.com

tax advisors

173 Concord Street, Framingham 01702 • 508-784-1120 www.taxadvisorpro.com

WELLNESS & BEAUTY**26.2 Foundation**

PO Box 820, Hopkinton 01748 • www.26.2.org

The foundation's mission is to promote and support the sport of marathoning, as well as health, wellness, and economic development initiatives through innovative, multi-generational programs on local, regional, national, and global levels.

A Cut Above Hair, Nail, & Skin

56 East Central Street, Franklin 02038 • 508-528-4543 www.acutabovhairandnails.com

Align Spine Chiropractic & Wellness

10 Union St, Natick 01760 • 508-545-6789 www.alignspinechiropractic.com

Allied Chiropractic

345 West Central Street, Franklin 02038 • 508-455-4600 www.alliedchiro.net

Ashland Physical Therapy & Sports Medicine

15 W Union Street, Ashland 01721 • 508-881-6750 www.ashlandphysicaltherapy.com

Patients who return to their preferred state of life with Ashland Physical Therapy & Sports Medicine can expect the highest quality care from our licensed therapists. Our treatment philosophy focuses on the patient.

Bancroft Boxing

701 Waverly Street, Framingham 01702 • 508.596.2086 www.bancroftboxing.com

Be Healthy Homeopathy

317 North Main Street, Natick 01760 • 508-397-6098 www.behealthyhomeopathy.com

Blackstone Oriental Medicine Clinic

9 Summer Street #303, Franklin 02038 • 508-530-3379 www.blackstoneomc.com

Club Pilates Framingham

25 Prospect Street, Framingham 01701 • 774-999-0209 www.clubpilates.com/Framingham

Crossfit Framingham

280 Worcester Road, Framingham 01701 • 508-626-2000 www.crossfit-framingham.com

Daryn Bower, CMT

680 Worcester Road, Framingham 01702 • 508-872-3700 www.darynbowermt.org

Fernandes Acupuncture

14 Winthrop St, Marlborough 01752 • 978-473-9393 www.fernandesacupunctureandherbs.com

The Gentle Place: Massage – Yoga- Wellness

79 Main Street, Suites 104-106, Framingham 01701 • 508-788-7300 www.thegentleplace.com

Impact MetroWest

2 Watson Place, Framingham 01701 • 508-766-0318 www.impactmetrowest.com

Invidia Salon

736 Boston Post Road, Sudbury 01776 • 978-443-1717 www.invidiasalon.com

Joint Ventures Physical Therapy & Fitness

204 Worcester Street, Wellesley 02481 • 617-536-1161 www.JointVenturesPT.com
109 Andrew Avenue, Suite 102, Wayland 01778



MacMedSpa Milford Day Spa

125 East Main Street, Milford 01757 • 508-283-7837 www.macmedspa.com

Orangetheory Fitness

21 Main Street, Natick 01760 • 954-530-6903 www.orangetheoryfitness.com/natick

Premier Martial Arts

771 Boston Post Road, Marlborough 01752 • 508-229-2545 www.pmamarlborough.com

SELF Aesthetics Medical Spa

323 West Central Street, Franklin 02038 • 508-541-7353 www.self-therapeutics.com

South County Physical Therapy

154 East Main Street, Westborough 01581 • 508-366-7899 www.southcountyppt.com
30 Oak Street, Westborough 01581 • 508-389-9912 www.southcountyppt.com

Special Olympics Massachusetts

Yawkey Sports Training Center • 512 Forest Street, Marlborough 01752

508-485-0986 www.specialolympicsma.org

Through successful experiences in sports, Special Olympics Massachusetts athletes gain confidence and build positive self-images, which they take with them into their homes, classrooms, jobs, and communities.

Title Boxing

43A Apex Drive, Marlborough 01752 • 508-251-1261 www.titleboxingclub.com/marlborough-ma

HOSPITALS & HEALTH CARE

Acorn Animal Hospital

20 Earls Way, Franklin 02038 • 508-528-1135 www.acornanimalhospital.com

Atlantis Dental

118 Concord Street, Framingham 01702 • 508-270-5050 www.myatlantisdental.com

Audiology Clinic at the Learning Center for the Deaf

848 Central Street, Framingham 01701 • 508-875-4559 www.tlcldeaf.com

TLC is a nationally recognized leader in educational, therapeutic, and community services for deaf and hard of hearing children and adults.

Brewster Ambulance Service

7 Main Street, Framingham 01702 • 508-309-6953 www.brewsterambulance.com

Emerson Urgent Care

Shops at Highland Common, Highland Commons Way, Hudson 01749

978-287-8990 www.emersonhospital.org/urgent

The Urgent Care Center, open seven days/week, is staffed by physicians and offers care for minor illnesses and injuries.

No appointment is necessary. Patients can request a time for care online.

MetroWest Medical Center / Framingham Union Hospital

115 Lincoln Street, Framingham 01702 • 508-383-1000 www.mwmc.com

MetroWest Medical Center / Leonard Morse Hospital

67 Union Street, Natick 01760 • 508-650-7000 www.mwmc.com

Milford Regional Medical Center

14 Prospect Street, Milford 01757 • 508-473-1190 www.milfordregional.org

Natick Urgent Care

4 Mercer Road, Natick 01760 • 508-318-4466 www.natickurgentcare.com



UMass Memorial Marlborough Hospital

57 Union Street, Marlborough 01752 • 508-481-5000
www.umassmemorialhealthcare.org/marlborough-hospital

Wexler Chiropractic & Wellness Center

650 Worcester Road, Framingham 01702 • 508-879-8882 www.framinghamchiropractic.com

Zarella Dentistry

171 Main Street, Suite 100, Ashland 01721 • 508-881-1280 www.ashlanddmd.com

MEETINGS & TRAVEL

AAA Southern New England

653 Worcester Road, Framingham 01701 • 508-875-2000 www.aaa.com

Alumni House

42 Adams Road, Framingham 01702 • 508-872-9770 www.alumnihouse.org

The Alumni House offers flexible socializing spaces, a conference room, and a self-catering kitchen for social and business functions at reasonable rates. Our gracious setting can accommodate up to 60 people for a standup reception.

Edwards House Meeting & Retreat Center (see page 31)

MEDIA

Access Framingham (AFTV)

4 Vernon Avenue, Framingham 01702 • 508-875-5434 www.accessfram.tv

Access Framingham's (AFTV) engages, serves and enriches the community by supporting television programming created by the people of Framingham, providing educational opportunities and facilitating the exchange of ideas and information through traditional and new media.

Discover Natick

www.discovernatick.com

The Homesteader

P.O. Box 1072 Acton 01720 • 978-461-0028 www.TheHomesteader.com

Hopkinton Independent

6 Fenton Street, Hopkinton 01748 • 508-435-5188 www.hopkintonindependent.com

My FM Media: 101.3 and WMRC 1490 AM

258 Main Street, Milford 01757 • 508-473-1490 • www.wmrcdailynews.com

Petroni Media Company – Framingham SOURCE/Ashland SOURCE/Natick SOURCE

framinghamsource.com

The online SOURCE for all local and community news and events.

WCRN AM 830

276 Turnpike Road, Westborough 01581 • 508-871-7000 www.wcrnradio.com

WSRO Radio 650 (Rede ABR)

100 Mount Wayte Avenue, Framingham 01702 • 508-820-0001 www.wsro.com

NONPROFIT COMMUNITY SERVICES

American Cancer Society New England Division

43 Nagog Park, Suite 110, Acton, 01720 • 781-894-6633 www.cancer.org/myacs/newengland

Bethany Hill Place

89 Bethany Road, Framingham 01702 • 508-875-1117 www.bethanyhillschool.org

Downtown Framingham Inc.

12 Irving Street, Framingham 01701 • 508-656-0168 www.downtownframinghaminc.org
We are a 501(c)(3) nonprofit dedicated to guiding Downtown Framingham to its most vibrant future. We join our great local businesses and neighborhood communities to welcome you as our guests and future friends!

Family Promise MetroWest

13 Common Street, Natick 01760 • 508-318-4820 www.familypromisemetrowest.org

Holliston in Bloom

Holliston 01746 • www.hollistoninbloom.org

Framingham Public Library

49 Lexington Street, Framingham 01701 • 508-532-5570 www.framinghamlibrary.org
The library provides a friendly, physical environment that serves as a community meeting place encouraging curiosity, free inquiry, and lifelong learning.

Friends of Saxonville

P.O. Box 3236, Framingham 01705 • www.saxonville.org

Latino Health Insurance Program

276 Union Avenue, Framingham 01702 • 508-875-1237 www.lhiprogram.org
204A Main Street, Milford 017021 • 508-422-9996 www.lhiprogram.org

Leadership MetroWest

665 Franklin Street, upper level, Framingham 01702 • 508-872-6161 www.leadershipmetrowest.org
We empower participants and alumni of our signature program, the Leadership Academy, to be more effective community and business leaders and to embrace cross-sector collaboration.

Medway Community Farm

50 Winthrop Street, Medway 02053 • 508-250-0260 www.medwaycommunityfarm.org

MetroWest Parents of Multiples

Serving the entire MetroWest region • www.mwpom.org

Natick Community Organic Farm

117 Elliot Street, Natick 01760 • 508-655-2204 www.natickfarm.org

OUT MetroWest

P.O. Box 2122, Framingham 01703 • 508-875-2122 www.outmetrowest.org

Rotary Club of Framingham

www.framinghamrotary.org

SPARK Kindness

Natick 01760 • www.sparkkindness.org

Sudbury Foundation

326 Concord Road, Sudbury 01776 • 978-443-0849 www.sudburyfoundation.org

Taly Foundation

665 Franklin Street, Upper Level, Framingham 01702 • 774-257-5455 www.talyfoundation.org
The Taly Foundation's mission is to provide access to and improve the quality of early childhood education. Taly's vision is that all children will have access to high quality preschool education.

United Way of Tri-County

46 Park Street, Framingham 01702 • 888-811-3291 www.uwotc.org
We help local neighbors as MetroWest's largest community-based investor in Education, Financial Stability, Health, and Basic Human Needs – the building blocks for a good quality of life. GIVE. ADVOCATE. VOLUNTEER.

Veterans Inc.

69 Grover Street, Worcester 01605 • 800-482-2565
www.veteransinc.org

**TRANSPORTATION****Able Limousine**

102 East Main Street, Hopkinton 01748 • 508-435-3903 www.ablelimousineinc.com

Acre Bridge Transportation

2 Mount Royal Avenue, suite 206, Marlborough 01752 • 855-953-5466 www.acrebridge.com

Boston Logan Airport

1 Harborside Way, Boston 02128 • www.boston-logan-airport.com

GATRA (Greater Attleboro Taunton Regional Transportation Authority)

800-483-2500 www.gatra.org
Fixed bus routes serving 28 communities, including Franklin and shuttle services to MBTA stations in the MetroWest towns of Bellingham, Franklin, and Medway.

Hopedale Industrial Park Airport

1 Airport Road, Hopedale 01747 • 508-478-1726 www.hopedaleindustrialpark.com

JFK Transportation

4 Mechanic Street, Natick 01760 • 508-653-4500 www.jfktransinc.com

Knight's Airport Limousine Service

390 Hartford Turnpike, Shrewsbury 01545 • 508-839-6252 www.knightslimo.com

Logan Express

1 Worcester Road, Framingham 01701 • www.massport.com/logan-airport

LimoLiner

154 Maple St Stoughton 02072 • 844-405-4637 www.limoliner.com

Massachusetts Department of Transportation Exams

650 Worcester Road (at Wexler Chiropractic & Wellness), Framingham 01702 508-879-8882
www.massdotexams.com

MBTA Commuter Rail

www.mbta.com

More than 20 trains stop daily at the MetroWest railway stations in Natick, West Natick, Framingham, Ashland, Southborough, and Westborough.

MBTA Subway

www.mbta.com

Riverside, the westernmost subway stop, is a ten-minute ride on the MWRTA bus (map on page 43) from Natick.

MetroWest Regional Transit Authority

12 Blandin Avenue, Framingham 01702 • 888-996-9782 www.mwrta.com

Clean, inexpensive, and reliable public bus service to all major hotels, shopping areas, and thoroughfares. Track your bus online in real time! See route map on page 43.

Tommy's Taxi

167 Franklin Street, Framingham 01702 • 508-872-3500 www.tommystaxicab.com
Full-service taxicab company providing timely, reliable, and safe transportation services to MetroWest. Providing "early bird" service to Logan Airport prior to 5am by reservation.

WLimo

219 West Boylston Street, West Boylston 01583 • 800-660-0992 www.wlimo.com

Since 1978, WLimo has set the standard for airport service in Central Massachusetts, providing shuttles to Logan, TF Green, and WorcesterRegional airports, and providing private and charter service throughout the Northeast.

Worcester Regional Airport

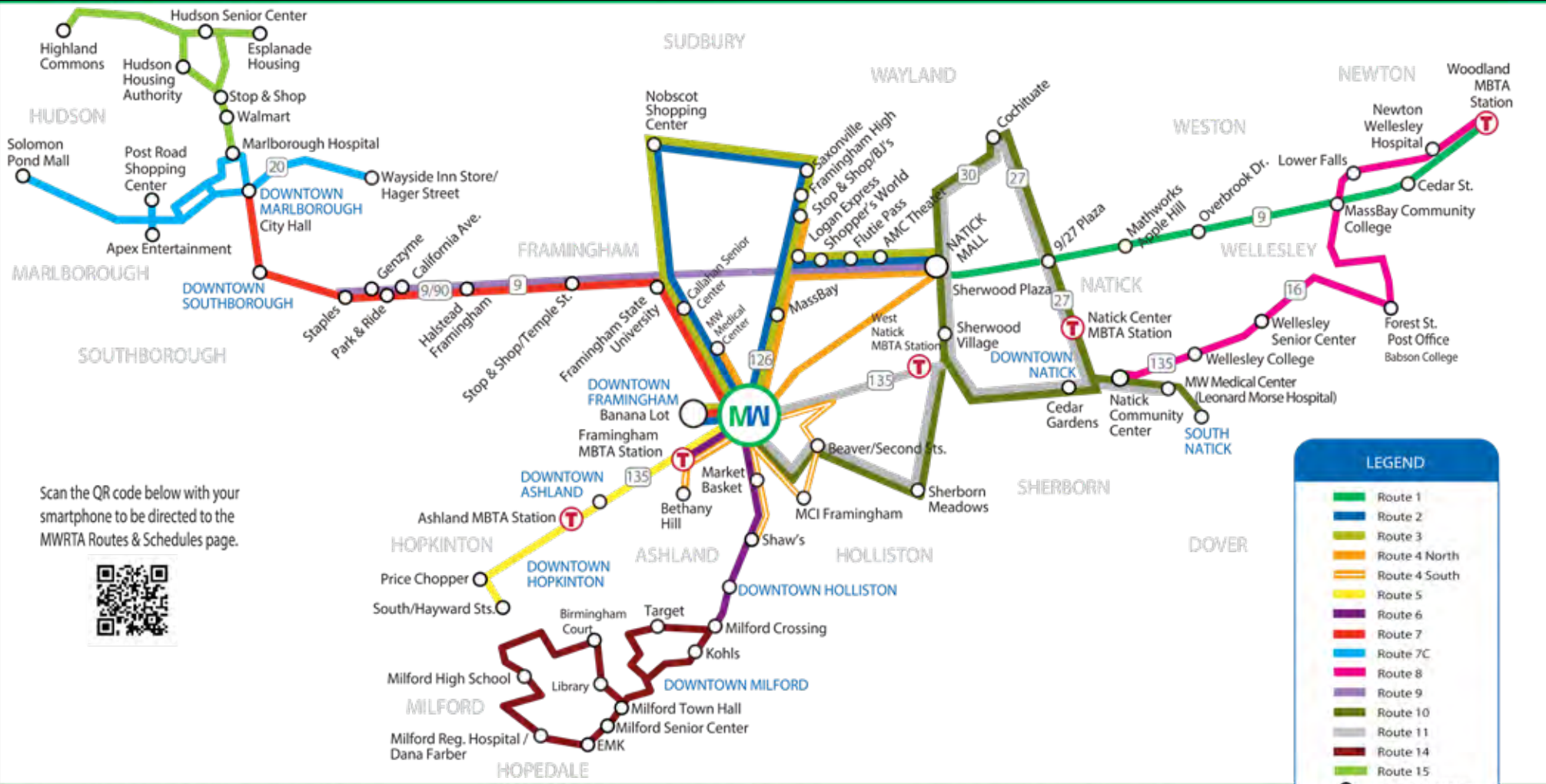
375 Airport Drive, Worcester, MA 01602 • 508-849-5550





METROWEST REGIONAL TRANSIT AUTHORITY

Public Transportation System | www.mwrta.com | 508.935.2222



Scan the QR code below with your smartphone to be directed to the MWRTA Routes & Schedules page.



MetroWest Regional Transit Authority

From Solomon Pond Mall in Marlborough to Woodland Station in Newton—We've got you covered.

MetroWest Regional Transit Authority (MWTRA) provides public transportation along twelve different bus routes connecting the entire MetroWest community.

We provide access to all major area employers, medical facilities, and shopping locations. MWTRA also connects commuters with the Massachusetts Bay Transportation Authority (MBTA) system. The commuter rail connection can take you eastbound or westbound to Boston or Worcester. Go Green! Be friendly to our environment and be mindful of your carbon footprint.

Customer Service & Travel Information
Please call 508.935.2222 or visit us online at mwrta.com.

Blandin Hub is located at 15 Blandin Avenue in Framingham.

@mwrta

LEGEND

- Route 1
- Route 2
- Route 3
- Route 4 North
- Route 4 South
- Route 5
- Route 6
- Route 7
- Route 7C
- Route 8
- Route 9
- Route 10
- Route 11
- Route 14
- Route 15
- Scheduled Stop
- Blandin Hub
- The MWRTA uses the "flag down" system.



Moving in

Once you're settled in your new hometown, get out to see more and do more right in your backyard.

Dine, shop, recreate, and explore, and you'll learn that our region is where

- New England comes together in a family-friendly balance of old and new, historic and cutting-edge modern, urban and rural.
- Town pride inspires a full calendar of community events and festivals that showcase local talent, wares, traditions, and invention.
- The Commonwealth's most highly educated population enjoys high-achieving public school districts, with private schools known throughout the world for their specialties in the arts, math, languages, and disabilities.
- We're not just smart, but employable, too. MetroWest posts the state's lowest unemployment rate.
- A network of collaborative nonprofit groups tackle tough issues while working to maintain a high quality of life for all our residents.

From the oldest colonial inn to the newest gourmet market, MetroWest residents have always had more to boast about. You will too.

From corporate culture to community connections, MetroWest offers it all.
Photos: Boston Scientific; Hamlen Pond in Hamlen Woods, courtesy Sudbury Valley Trustees;
First Congregational Church in Holliston.

REAL ESTATE

Aimee Siers – Berkshire Hathaway HomeServices Commonwealth Real Estate / Framingham

1 Edgell Rd., Framingham 01701 • 866-216-1730 www.ReadyAimHome.com
I LOVE that being a REALTOR® is a life and not just a career! I'm here to be your advocate whenever it is the right time for your move. Thank you for your trust!

Barber Real Estate Group, William Raveis

56 Eliot Street, Natick 01760 • 508 653-1256 www.BarberRealEstateGroup.com
The best realty group in Metrowest. Don't take our word for it. Listen to what our buyers, sellers and building partners are saying. The Barber Real Estate Group delivers the results people rave about.

Beaudoin, Tracey – Realty Executive Boston West

205 Turnpike Road, Southborough 01772 • 508.380.9296 www.TracyBeaudoin.com

Berkshire Realty Group

259 Turnpike Road, Suite 100, Southborough 01772 • 508-357-2298 www.berkshirerealtyhomes.com

Brendon Homes

259 Turnpike Road, Southborough 01772 • 508-485-3999 www.brendonhomes.com

Capital Group Properties

259 Turnpike Road, Suite 100, Southborough 01772 • 508-357-8825 www.capitalgroupproperties.com

Coldwell Banker Residential Brokerage

393 West Central Street, Franklin 02038 • 508-541-6200 www.newenglandmoves.com
9 Pleasant Street, Framingham 01701 • 508.872.0084 www.coldwellbankerhomes.com/ma/framingham
447 Boston Post Road, Sudbury 01776 • 878-443-9933 www.coldwellbankerhomes.com/ma/sudbury
311 Boston Post Road Wayland 01778-1802 • 508-358-5131 www.coldwellbankerhomes.com/ma/wayland

Curley, Jean – Coldwell Banker Residential Brokerage Franklin

393 West Central Street, Franklin 02038 • 508-479-2106 www.burbsofboston.com

Daniels, Ed – Realty Executives

21 Central Street, Holliston 01746 • 508-341-7880 www.MAhome.com

ERA Key Realty Services—Nelson Zide

1661 Worcester Road, Suite 100, Framingham 01701 • 508-879-4474 www.nelsonzide.com
Since 1977, my clients have appreciated my attention to every detail, my organization, my commitment to quality service, and above all my understanding of their special needs throughout the entire transaction.

ERA Key Realty Services

55 West Central Street, Franklin 02038 • 508-528-7100 www.erakeyrealty.com
19B Maple Street, Marlborough 01752 • 508-303-3434 www.erakeyrealty.com
16 East Main Street, Milford 01757 • 508-478-7777 www.erakeyrealty.com
707 Main Street, Millis 02054 • 508-376-8200 www.erakeyrealty.com
76 Otis Street, Westborough 01581 • 508-366-1818 www.erakeyrealty.com

Newcomers Clubs

Franklin: franklinnewcomers.com
Holliston: hollistonnewcomers.org
Sudbury: sudburynewcomersclub.org
Westborough: westboroughnewcomers.org

Houses of Worship Directories

Churches USA: usachurches.org/search/ma
Church Angel: churchangel.com/mass.htm
Synagogue Council of MA:
synagoguecouncil.org/Directory/Listings
USA Mosque Directory: mosquesmasjids.com
Directory of churches, temples, and ministries in MetroWest, search by town: usa-churches.com

Glatt, Ashley - Keller Williams

276 Turnpike Rd, Suite 221, Westborough 01581 • 508-507-8704 www.ashleyglatt.com

Heritage & Main Real Estate

6 Maple Street, Northborough 01532 • 508-446-1932 www.heritageandmain.com

Keller Williams

161 Worcester Rd, Suite 504, Framingham 01701

Koswick, Ellen, CRS, ABR, SRES at RE/MAX

665 Cochituate Road, Framingham 01701 • 508-545-4923 www.ellenkoswick.com
As a Certified Residential Specialist, I assist home buyers and sellers with the sale and purchase of their properties, marketing, negotiating terms, and problem resolution. I maintain an up-to-date understanding of market demands.

Morese, Martha — Real Living Realty Group

169 West Main Street, Hopkinton 01748 • 508-662-7301 www.MarthaMorese.com
I have a dedicated team of professionals that provide exceptional real estate service to all types of buyers and sellers. Call me at 508-662-7301 today to see how we are "Bringing the American Dream Home".

Moy-Bruno, Donna

508-259-0712 www.bestmetrowestrealty.com
A resident of the Metrowest area for over 50 years, I love Real Estate, working with families, helping them to buy and sell homes, and making new friends in the process.

NB Taylor & Co., Inc. Realtors

356 Boston Post Road, Sudbury 01776 • 978-443-8100 www.nbtaylor.com

RE/MAX Executive Realty

308 West Central Street, Suite E, Franklin 02038 • 508-520-9882 www.remaxexec.com
We passionately help people fulfill their real estate dreams! With extensive knowledge of the buying and selling process, our experienced professionals will help you navigate the real estate market. Please see all our locations below.

RE/MAX Executive Realty - Hopkinton

202 South Street, Hopkinton 01748 • 508-435-6700 www.remaxexec.com

RE/MAX Executive Realty - Holliston

404 Washington Street, Holliston 01746 • 508-429-6767 www.remaxexec.com

RE/MAX Executive Realty - North Grafton

68 Worcester Street, North Grafton 01536 • 508-829-9219 www.remaxexec.com

RE/MAX Executive Realty - Marlborough

2 Mount Royal Avenue, Suite 120, Marlborough 01752 • 508-630-0330 www.remaxexec.com

RE/MAX Executive Realty - Medfield

14 North Meadows Road, Medfield 02052 • 508-359-1100 www.remaxexec.com

RE/MAX Executive Realty Commercial Division

308 West Central Street, Suite E, Franklin 02038 • 508-541-1350 www.remax-executivecommercial.com

Retail Real Estate Advisors – Ria McNamara

508-254-7676 www.retailre.com
Celebrating her 30th anniversary in retail real estate, Ria's main focus is on optimizing the tenant mix in existing shopping centers and identifying new retail development opportunities through her extensive network of contacts.

Sannicandro, Mary Anne - ERA Key Realty Services

1661 Worcester Road, Suite 100, Framingham 01701 • 508-879-4474 www.IFindTheBestDeals.com

Sollima, Ellen Kelley GRI, ABR

10 West Central Street Natick 01760 • 508-243-8481 www.ellenfindshomes.com
Ellen's goal is to make life long clients, not just sales. 90% of her business is referrals. Service is the most important and valuable quality she offers. Her priorities are simple: they're yours!

Spector, Donna — Real Living Realty Group

55 West Central Street, Franklin 02038 • 508-751-9735 www.realliving.com/donna.spector

YOUR REAL ESTATE ADVOCATE



Aimee Siers
508-981-7790
ReadyAimHome.com
Aimee.Siers@CommonMoves.com

With the skills and experience

MY GOAL IS SIMPLE

To make the buying and/or selling process as
simple and stress-free as possible!



Sullivan, Diane B., Premier Associate — Coldwell Banker Residential Brokerage

9 Pleasant Street, Framingham 01701 • 508 561-1618 www.dianebsullivan.com
Having grown up in a real estate household, I am a “natural” to the business. From the moment I began my own career in 1985, I’ve been serving customers and clients buying and selling in MetroWest.

William Raveis Real Estate

61 Eliot Street, Natick 01760 • 508-655-4141 www.raveis.com

SENIOR LIVING & CARE

The Callahan Center / Framingham Council on Aging

535 Union Avenue, Framingham 01702 • 508-532-5980 www.framinghamma.gov/360/council-on-aging

Heritage at Framingham Senior Living

747 Water Street, Framingham 01701 • 508-665-5370 www.HeritageAssistedLiving.org
Our residents and their families enjoy an elegant yet home-like atmosphere offering worry-free gracious living. We offer all-inclusive apartment rentals with numerous opportunities to participate in various social, recreational, and cultural offerings.

Magnolia Heights Retirement Living

485 East Central Street, Franklin 02038 • 508-534-8160
www.seniorlivinginstyle.com

Traditions of Wayland

10 Green Way, Wayland 01778 • 508-358-0700 www.traditionsofwayland.com

Whitney Place Assisted Living Residences

3 Vision Drive, Natick 01760 • 508-655-5000 www.SalmonHealth.com



MOVING

Carmel Moving

143 Maynard Road, Framingham 01701 • 508-283-9990 www.carmelmoving.com

DN Van Lines

269 Mechanic Street, Marlborough 01752 • 1-800-51-MOVER www.dnvanlines.com

Mark’s Moving & Storage

111 Milk Street, Westborough 01581 • 508-889-640 www.marksmoving.com

Mastadon Moving, LLC

200 Homer Ave, Ashland 01721 • 774-421-9004 www.mastadonmoving.com

Monster Movers

140 Shrewsbury Street, Boylston 01505 • 508-751-6769 www.mymonstermovers.com

RESOURCES

Ashes Away Chimney Maintenance

179A Main Street, Ashland 01721 • 508-881-4274 www.ashesawaychimney.net

Bernardi Auto Group

Locations throughout MetroWest www.bernardiautogroup.com
We have a reputation for excellence in customer service and quality sales of new and used Acura, Audi, Honda, Hyundai Scion, Toyota and Volvo cars, trucks, and SUVs, and genuine OEM parts and accessories.

Boston Solar

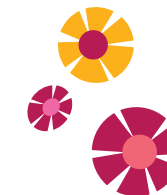
617-858-1645 • www.bostonsolar.us

Exceptional Autobody88 Blandin Avenue, Framingham 01702 • 508-872-9434 www.exceptionalautobody.com**Franklin Mill Store**305 Union Street Franklin 02038 • 508-528-3301 www.franklinmillstore.com**Frank's Appliance**331 Main Street Milford 01757 • 508-473-1309 www.franksappliance.com**Loneragan Construction**Serving MetroWest • 508 875-0052 www.loneraganconstruction.com**Renewal by Andersen**30 Forbes Road, Northborough 01532 • 508-351-9292 www.renewalbyandersen.com**Ron's Tire and Service**635 Waverly Street, Framingham 01702 • 508-872-2266 www.ronstireandservice.com**Rescom Exteriors**Six MetroWest locations • 508-832-5202 www.iwantnewwindows.com**Simplify Simplify Professional Organizer**Framingham • 508-403-0145 www.simplifysimplify.org**United Home Experts**60 Pleasant Street, Ashland 01721
508-881-8555 www.unitedhomeexperts.com

We use our decades of experience to deliver top-quality siding, roofing, windows, and painting services in your budget.

**MUNICIPAL****Ashland, Town of**101 Main Street, Ashland 01721 • 508-881-0100 www.ashlandmass.com**Bellingham, Town of**10 Mechanic Street, Bellingham 02019 • 508-657-2801 www.bellinghamma.org**Framingham, City of**150 Concord Street, Framingham 01702 • 508-532-5520 www.framinghamma.org**Franklin, Town of**355 East Central Street, Franklin 02038 • 508-520-4949 www.town.franklin.ma.us

A vibrant pro-business, family-oriented community with a great quality of life and significant cultural, historic, and natural resources; Franklin is truly the complete package.

Holliston, Town of703 Washington Street, Holliston 01746 • 508-429-0608 www.townofholliston.us**Hopkinton, Town of**18 Main Street, Hopkinton 01748 • 508-497-9700 www.hopkintonma.gov**Hudson, Town of**8 Main Street, Hudson 01749 • 978-562-9963 www.townofhudson.org**Marlborough Economic Development Corp.**91 Main Street, Suite 204, Marlborough 01752 • 508-229-2010 marlboroughedc.com
Fostering the growth of Marlborough's commercial, industrial, and retail sectors while attracting complementary businesses to the community.**Marlborough, City of**140 Main Street, Marlborough 01752 • 508-460-3770 www.marlborough-ma.gov**Maynard, Town of**195 Main Street, Maynard 01754 • 978-897-1375 www.townofmaynard-ma.gov**Medway, Town of**155 Village Street, Medway 02053 • 508-533-3264 www.townofmedway.org**Milford, Town of**52 Main Street, Milford 01757 • 508-634-2303 www.milford.ma.us**Millis, Town of**900 Main Street, Millis 02054 • 508-376-7040 www.millis.org**Natick, Town of**13 East Central Street, Natick 01760 • 508-647-6300 www.natickma.gov**Sherborn, Town of**19 Washington Street, Sherborn 01770 • 508-651-7850 www.sherbornma.org**Northborough, Town of**63 Main Street, Northborough 01532 • 508-393-5040 www.town.northborough.ma.us**Southborough, Town of**17 Common Street, Southborough 01772 • 508-485-0710 www.southboroughtown.com**Sudbury, Town of**278 Old Sudbury Road, Sudbury 01776 • 978-639-3381 www.town.sudbury.ma.us**Wayland, Town of**41 Cochituate Road, Wayland 01778 • 508-358-7701 www.wayland.ma.us**Westborough, Town of**34 Main Street, Westborough 01581 • 508-366-3020 www.town.westborough.ma.us

EXPERIENCE
THE
SAMBA
Lifestyle

The Hidden Gem of Boston's Metro West

samba
c o c k t a i l s

1136 Worcester Rd., Framingham • sambaframingham.com • 508.623.0288



MUNICIPAL METRICS

Ashland

Established: 1846
 Population (2010): 16,593
 Residential Tax Rate (2017): \$16.70
 Median Sales Price (2016): \$420,00
 Median Household Income: \$93,233

Bellingham

Established: 1719
 Population (2010): 16,332
 Residential Tax Rate (2017): \$14.34
 Median Sales Price (2016): \$289,000
 Median Household Income: \$80,179

Framingham

Established: 1700
 Population (2010): 68,318
 Residential Tax Rate (2017): \$16.71
 Median Sales Price (2016): \$400,00
 Median Household Income: \$67,915

Franklin

Established: 1778
 Population (2010): 32,863
 Residential Tax Rate (2017): \$14.58
 Median Sales Price (2016): \$412,500
 Median Household Income: \$99,194

Holliston

Established: 1724
 Population (2010): 13,547
 Residential Tax Rate (2017): \$18.52
 Median Sales Price (2016): \$421,000
 Median Household Income: \$95,202

Hopedale

Established: 1886
 Population (2010): 5,911
 Residential Tax Rate (2017): \$17.29
 Median Household Income: \$89,408

Hopkinton

Established: 1715
 Population (2010): 15,925
 Residential Tax Rate (2017): \$16.80
 Median Sales Price (2016): \$643,950
 Median Household Income: \$129,578

Hudson

Established: 1866
 Population (2010): 14,907
 Residential Tax Rate (2017): \$17.50
 Median Sales Price (2016): \$350,000
 Median Household Income: \$71,971

Marlborough

Established: 1890
 Population (2010): 39,612
 Residential Tax Rate (2017): \$15.32
 Median Sales Price (2016): \$335,000
 Median Household Income: \$70,304

Medway

Established: 1713
 Population (2010): 12,752
 Residential Tax Rate (2017): \$17.92
 Median Sales Price (2016): \$381,250
 Median Household Income: \$106,132

Milford

Established: 1780
 Population (2010): 25,055
 Residential Tax Rate (2017): \$16.79
 Median Sales Price (2016): \$318,000
 Median Household Income: \$66,311

Millis

Established: 1885
 Population (2010): 7,891
 Residential Tax Rate (2017): \$18.42
 Median Sales Price (2016): \$401,900
 Median Household Income: \$91,341

Natick

Established: 1781
 Population (2010): 33,006
 Residential Tax Rate (2017): \$13.49
 Median Sales Price (2016): \$553,500
 Median Household Income: \$110,323

Northborough

Established: 1775
 Population (2010): 6,167
 Residential Tax Rate (2017): \$17.39
 Median Sales Price (2016): \$396,000
 Median Household Income: \$108,415

Sherborn

Established: 1674
 Population (2010): 4,119
 Residential Tax Rate (2017): \$20.46
 Median Sales Price (2016): \$745,500
 Median Household Income: \$153,444

Southborough

Established: 1727
 Population (2010): 9,767
 Residential Tax Rate (2017): \$16.38
 Median Sales Price (2016): \$550,000
 Median Household Income: \$143,581

Sudbury

Established: 1639
 Population (2010): 17,659
 Residential Tax Rate (2017): \$17.74
 Median Sales Price (2016): \$700,000
 Median Household Income: \$170,924

Wayland

Established: 1780
 Population (2010): 12,994
 Residential Tax Rate (2017): \$18.14
 Median Sales Price (2016): \$720,000
 Median Household Income: \$130,746

Westborough

Established: 1717
 Population (2010): 18,272
 Residential Tax Rate (2017): \$17.77
 Median Sales Price (2016): \$427,500
 Median Household Income: \$100,905

MEDIAN HOUSEHOLD INCOME IS BASED ON 2009-2013 AMERICAN COMMUNITY SURVEY 5 YEAR ESTIMATES. SUPPLEMENTAL INFORMATION SUPPLIED BY THE 495/METROWEST PARTNERSHIP.

APEX

ENTERTAINMENT®
FOOD • ATTRACTIONS • EVENTS

COME AND TRY OUR **NEW**
MENU ITEMS AND ONE OF OUR
60+ GLUTEN-FREE ITEMS!

BUMPER CARS

GO-KARTS

SPORTS SIMULATORS

LASER TAG



BOWLING



ARCADE

21 APEX DRIVE MARLBOROUGH, MA 508-251-8666 APEXENTERTAINMENT.COM



Bernardi*

AUTO GROUP



Bernardi*

Honda in Natick

960 Worcester Street
Natick, MA 01760
888.528.2547

Acura

OF BOSTON

1600 Soldiers Field Road
Brighton, MA 02135
617.254.5400

Bernardi*

Toyota in Framingham

1626 Worcester Road
Framingham, MA 01702
866.978.2289



Audi Natick

549 Worcester Street, Natick, MA 01760
888.691.0446



VOLVO CARS

WELLESLEY

962 Worcester Street, Wellesley, MA 02482
888.459.1215

Bernardi* *for Now...* **Bernardi*** *for Life.*

www.BernardiAutoGroup.com