



# AMEREN ILLINOIS ELECTRIC VEHICLE PARTNER NETWORK

EBMI MEETING  
MAY 7, 2026

# Agenda



Introduction

Electric vehicles on the rise

Residential Programs

Non-Residential Programs

Fleet Assessment Program

Questions



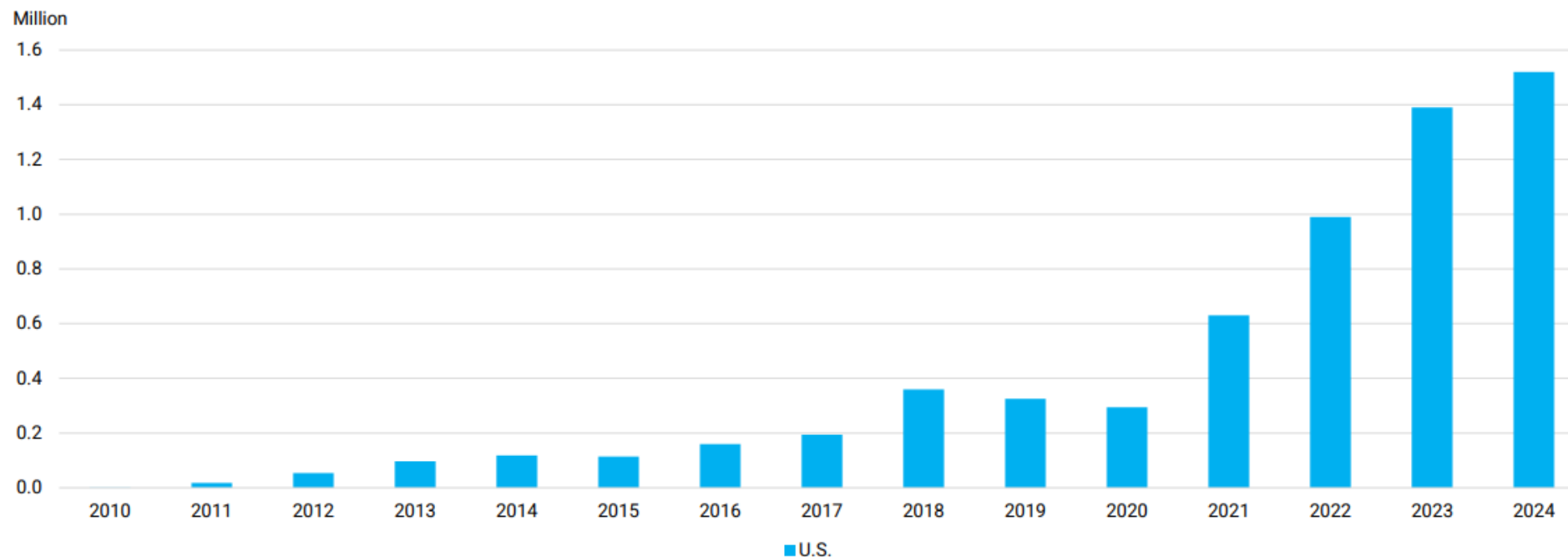
## Why Go Electric Now?

- Gas prices are at an all time high
- Better infrastructure for charging locally and nationally
- Range anxiety becoming a thing of the past
- Support from your local utility
- More electric vehicle models are on the market than ever before
- Expanding used car market is making it more affordable for all

# EV Sales On The Rise



## Global Passenger EV Sales in the U.S.

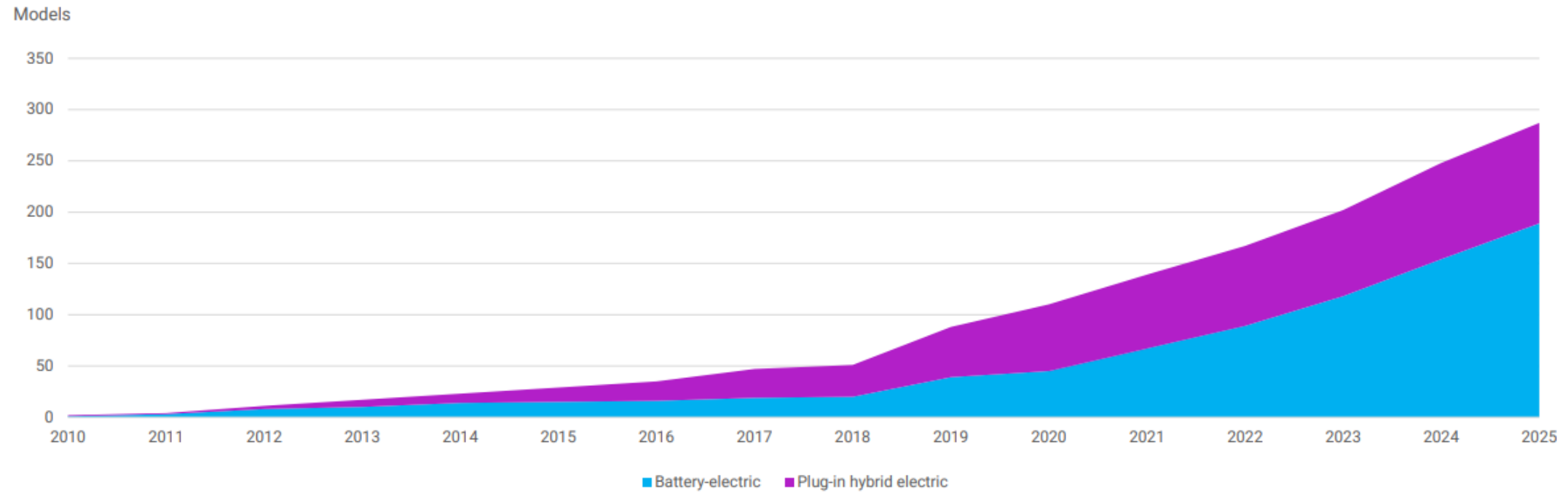


Source: IEA EV Outlook 2025. Note: includes battery-electric and plug-in hybrid electric vehicles.

# EV Models Increasing Dramatically



## U.S. EV models by drivetrain



Source: Atlas Public Policy.

# How do I charge?



## Charging Solutions that Meet Your Needs



### Level 1 Charger

- Provides 4-5 miles of range per hour
- Ideal for daily commutes of 40 miles or less
- Plug directly into a standard outlet
- No other special charging equipment needed
- Typically provided with EV purchase for home charging



### Level 2 Charger

- Provides ~25 miles of range per hour
- Ideal for longer daily commutes
- Requires a 240V outlet (similar to a dryer outlet) which will need a certified electrician to install
- Commonly used at home, work, or public locations where vehicles are sitting idle for 2+ hours
- Receive \$50 off the purchase of a qualified Level 2 charger.



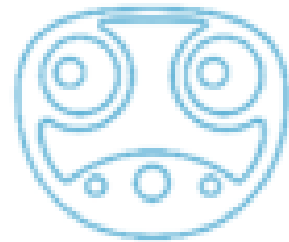
### Level 3 DC Fast Charger

- Provides ~80% in 30 minutes or less
- Ideal for quick stops on longer routes
- Typically requires payment through a charging network app
- Typically found along major highway corridors, public / private establishments

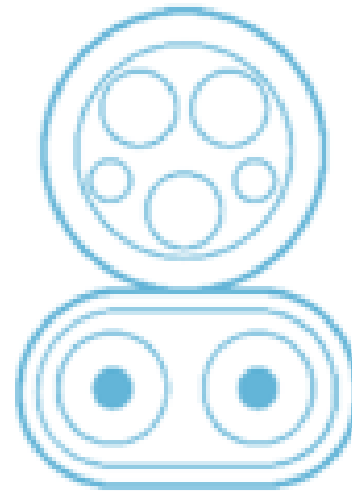
# Understanding DCFC Plug Types



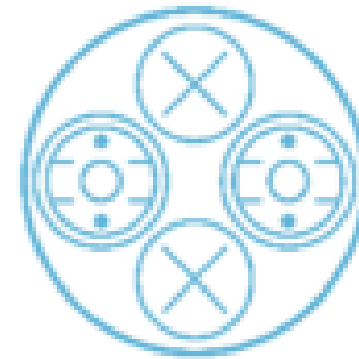
**J1772 (type 1)**



**NACS**



**Combo (CCS1)**



**CHAdeMO**



AMEREN CAN HELP

# ChargeReady for Residential Customers



ChargeReady is our Level 2 charger program designed to help residential customers break down the financial barrier to at home charging.

3 ways to qualify

- Community based
- Household
- Individual

A qualifying project receives a level 2 charger and panel upgrade if needed.

# Residential ChargeReady Program Qualifications



## Qualifying Criteria

- Equity Investment Eligible Community Map
- Household
- Individual
  - More details on [AmerenIllinois.com/ChargeReadyHome](https://www.AmerenIllinois.com/ChargeReadyHome)



# ChargeSmart

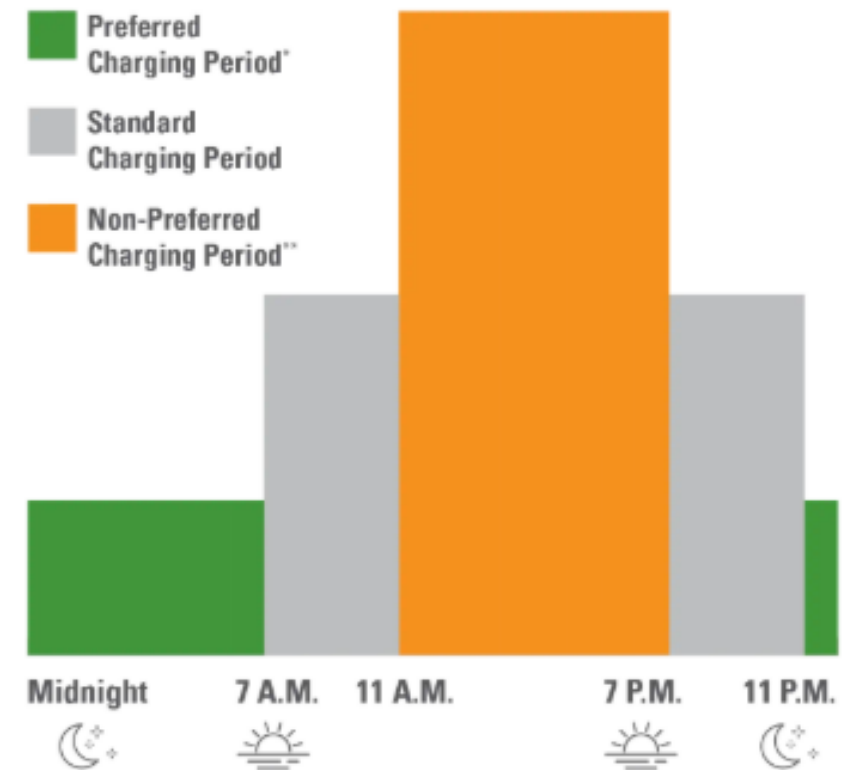


## ChargeSmart Incentives:

- \$4 Bill Credit for the first 12-consecutive months of enrollment
- Earn more saving when you charge during the Preferred Charging Period (11 p.m. – 7 a.m.) Flex Charge/Managed Charging
- This is a whole-home delivery credit program, shift energy usage to save more.
- Avoid charging during the Non-Preferred Charging Period (11 a.m. – 7 p.m.)

**FlexCharge** Incentives: A managed charging program. Coming soon. Preliminary sign-up at [AmerenIllinois.com/EVPrograms](https://AmerenIllinois.com/EVPrograms)

- \$50 one-time sign-up fee
- \$10 monthly incentive fee
- Ameren Illinois will manage charging, so the vehicle is fully charged at the customers charge-by time.



# Ameren Illinois Non-Residential ChargeReady Program



## Supplemental Line Extension Allowance

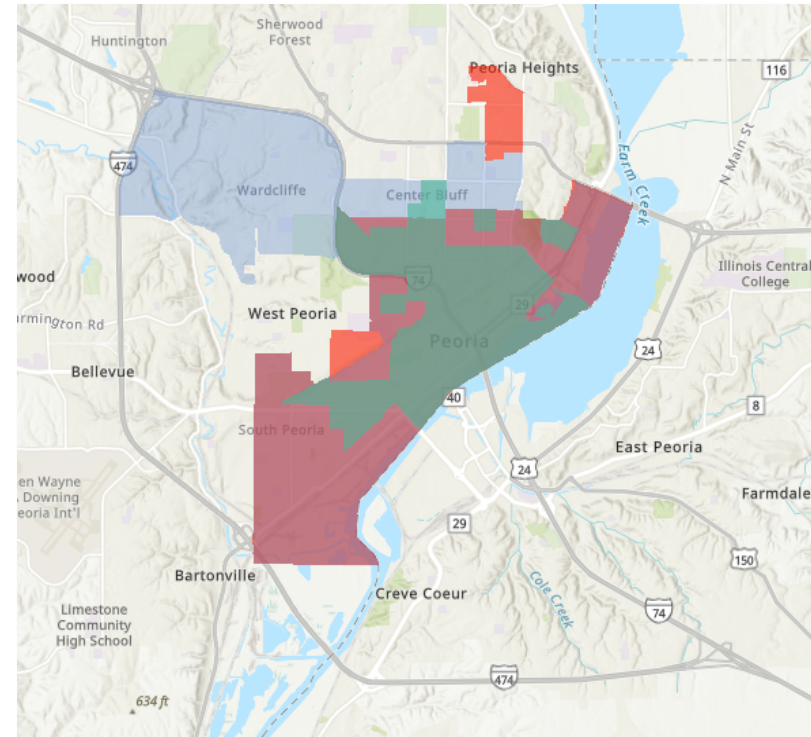
- Contributes to Ameren Illinois' cost to serve
- May also contribute to customer Make-Ready costs
- Higher incentives for Equity Investment Eligible locations

## Qualifying Customer Types

- Public, Education, Transit, Fleet, Multifamily

## Additional ChargeReady Incentive

- Education & Transit customers only
- Charger Rebates in Equity Investment Eligible locations

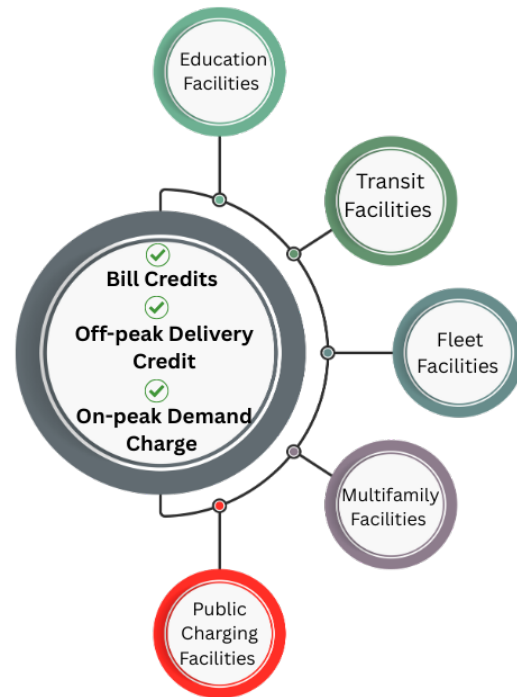


View the map [HERE](#).

# Ameren Illinois Non-Residential ChargeSmart Program



Small Customers (<150 kWh demand)



Large Customers (>150 kWh demand)



*\*Public Charging Facilities are also eligible for the Rate Limiter Credit*

# Fleet Assessment Program



Ameren Illinois is offering a **free, customized Fleet Assessment**. In a few short steps, we can help you determine if adding electric vehicles to your fleet will be beneficial. It's a complimentary consultation and report designed around your needs.

Your free report will include:

- Cost-benefit analysis
- Detailed information on comparative vehicle costs, charging requirements, emissions impacts, and fuel/maintenance savings
- Company-specific fleet requirements including vehicle needs, annual mileage and charging requirements
- Dedicated expert support and consultation on fleet electrification options
- Strategic conversion plan, including any available incentives

Take advantage of this offer and charge it to us. Let us evaluate how EVs can impact your business.

To start your free assessment, just scan the QR Code or visit [AmerenIllinois.com/Fleet](https://AmerenIllinois.com/Fleet).

Email us at [ElectrifyIL@ameren.com](mailto:ElectrifyIL@ameren.com) if you have additional questions.



POST-WF572900



# NEXT STEPS

# Ready to Start Your Project?



## Find an Electric Vehicle Partner (EVP)

**1**

### Explore the EVP List

Browse our comprehensive list of certified EVPs to find one near you.

**2**

### Contact an EVP

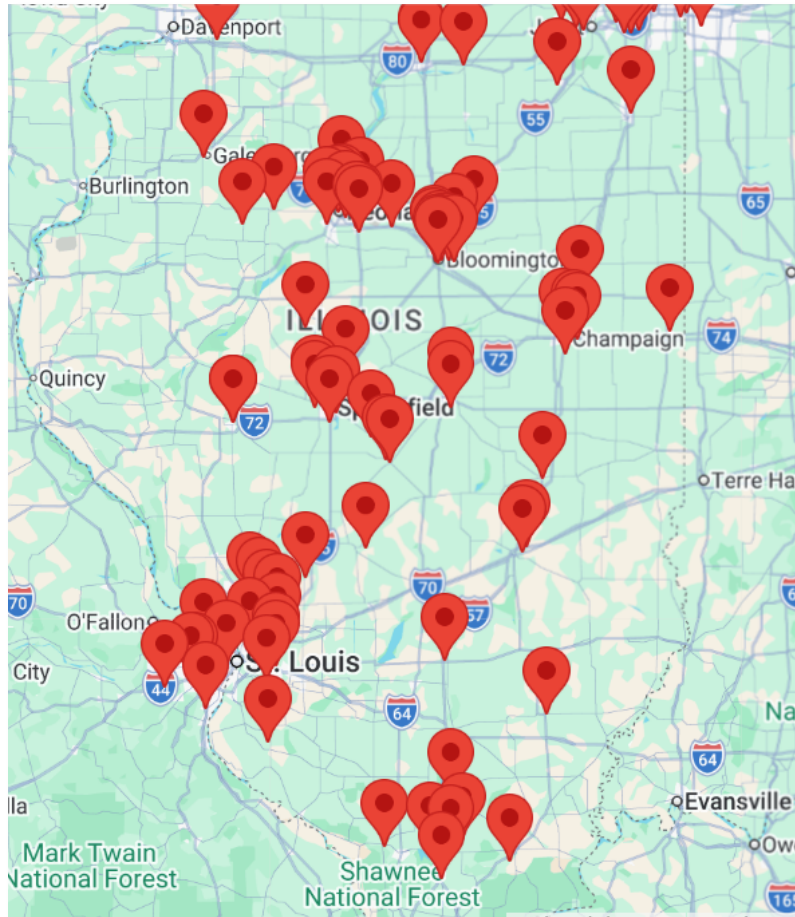
Reach out to your chosen EVP to discuss your charging needs and obtain a quote.

**3**

### Start Your Project

The EVP will confirm your eligibility, guide you through the process, and support installation needs.

# Become an Electric Vehicle Partner



URL: <https://amerenevpartners.com/>

Illinois Commerce Commission:

Electric Vehicle Charging Station Installer certification

No Ameren fees

No required work

Call us when you have a project

# Direct Contacts



- Bob Ackerman
  - Email: [bob.j.ackerman@leidos.com](mailto:bob.j.ackerman@leidos.com)
  - Application and incentive processing
- Zack Etter is your primary point of contact.
  - Email: [zetter1@wmenergy.com](mailto:zetter1@wmenergy.com)
  - Recruitment and non-member outreach.
- Christian Cannon will be doing EVP Member Outreach.
  - Bi-weekly outreach with our current EVP Members.
  - Email: [ccannon@wmenergy.com](mailto:ccannon@wmenergy.com)
- Program Email
  - Email: [EVPartners@ameren.com](mailto:EVPartners@ameren.com)
- Website
  - [AmerenEVPartners.com](http://AmerenEVPartners.com)
  - [AmerenIllinois.com/EV](http://AmerenIllinois.com/EV)



QUESTIONS?

