



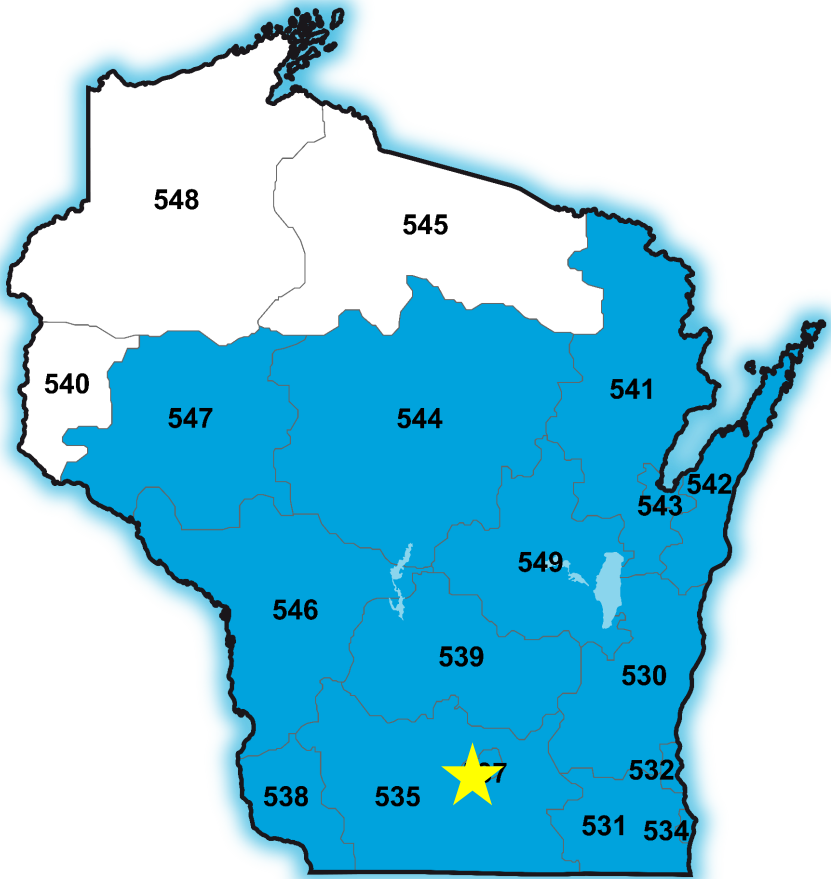
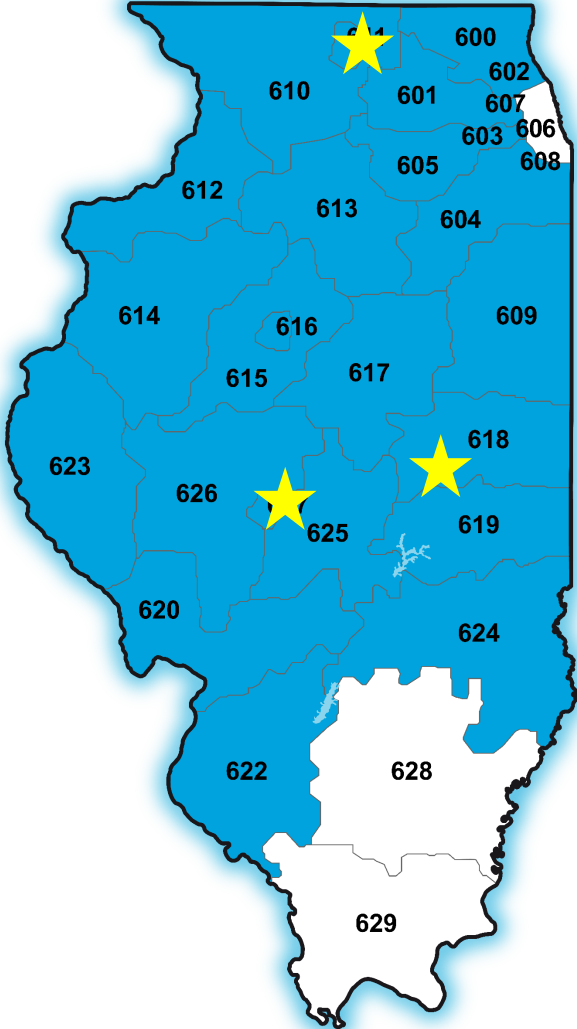
# ALPHA CONTROLS & SERVICES

*Creating Capital to Reinvest in Your Core Mission*

# Customer-Driven. Culture-Led.



# Where We Are Located



## OUR GOAL

- ✓ Comfort
- ✓ Energy Efficiency
- ✓ Save Money



# Our Process



**Who knows their energy cost  
per square foot per year?**

*(Show of Hands)*

# No Cost Energy Benchmark

## 51

ENERGY STAR Score\*

### Sample Middle School

**Primary Property Type:** K-12 School  
**Gross Floor Area (ft<sup>2</sup>):** 57,355  
**Built:** 1951

**For Year Ending:** December 31, 2025  
**Date Generated:** March 10, 2026

**Property Address:**  
123 Alpha Lane  
Alpha, IL 60555

**Property ID:** 123456789

\* The ENERGY STAR score is a 1-100 assessment of a building's energy efficiency as compared to similar buildings nationwide, adjusting for climate and business activity.

## Performance Comparison

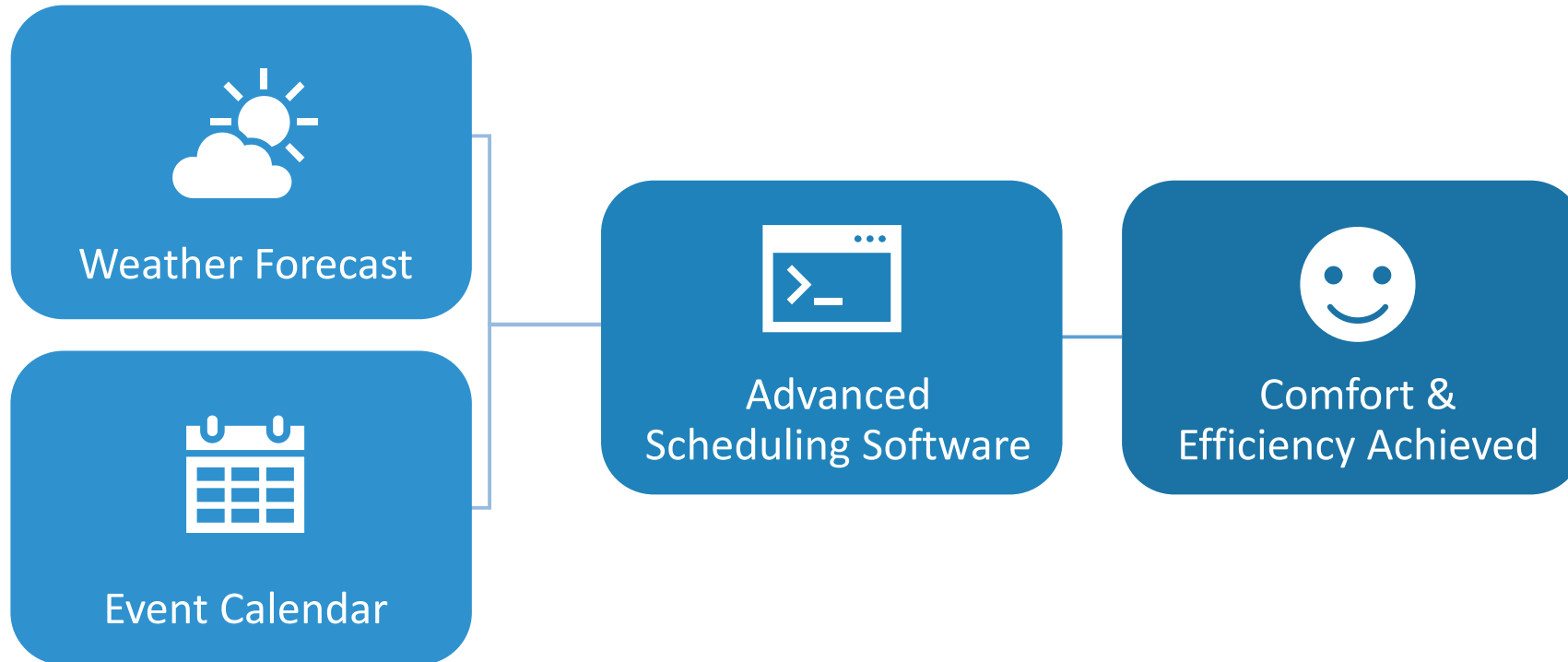
	Baseline (Ending Date 12/31/2025)	Progress (Ending Date 12/31/2025)	% Change	National Median	ENERGY STAR Target
ENERGY STAR Score	51	51		50	75
<b>Energy</b>					
Site EUI (kBtu/ft <sup>2</sup> )	46.0	46.0		46.9	35.5
Source EUI (kBtu/ft <sup>2</sup> )	115.1	115.1		117.3	88.7
Energy Cost (\$)	\$88,415	\$88,415		\$90,051	\$68,099
Energy Cost Intensity (\$/ft <sup>2</sup> )	\$1.54	\$1.54		\$1.60	\$1.20

**What are some ways to reduce  
your energy bill by 10%?**

Changing your daily runtime from:

**7am - 5pm → 7am - 3pm**

# Event Calendar Integration



# Your Partner for the *Long Haul*

Access Controls

Insights &  
Analytics

EBO  
Modernization

VFD Installer

Planned Service

Budgeted  
Modernization

Hourly Energy  
Modernization

Cyber Security



by Schneider Electric



# Our Utility Partners



---

**\$8.3 Million** in Utility Incentives Secured for Our Customers

(Cumulative total through March 2026)





UNIVERSITY OF  
**ILLINOIS**  
URBANA-CHAMPAIGN



EFFINGHAM  
PUBLIC  
LIBRARY



DeKalb Community Unit  
School District 428



---

**\$40 Million** in Total Customer Savings

# Case Studies

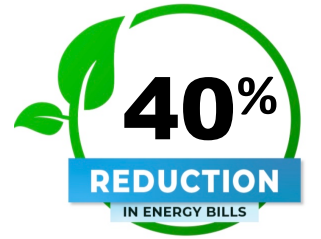


# Challenges Faced by Horace Mann Insurance

*Springfield, IL*

---

- Large Custom Windows
- Miles of Aging Pneumatics
- Limited Zones Per Floor
- Scheduling/Comfort Issues
- Energy Star Score of 16



# After Energy Efficiency Projects

---

- \$300-\$500K in annual savings
- 90% fewer comfort complaints
- 67% carbon reduction
- Significant utility incentives secured
- Early issue detection



## Horace Mann Service Corporation

(Horace Mann Service Corporation)

COPY ID

1 Horace Mann Plaza Springfield, IL 62715

Primary Function: Financial Office

Square Footage: 222,000 ft<sup>2</sup>

Campus Optimizer FEA KPI Fan Cycling: 0

Energy Star Score:

# 70

On a 1 to 100 Scale. For the 12-month period ending: 2/2026

ENERGY STAR

REPORTS

80/20 INVOICE

PERFORMANCE DETAILS

Total Cost Avoidance  
\$1,476,725.6

Utility Costs Reduction  
40%  
2024-10-01

Project Fee  
None

Incentives  
None

Baseline End Date  
2020-12-31

Savings Start Date  
2022-01-01

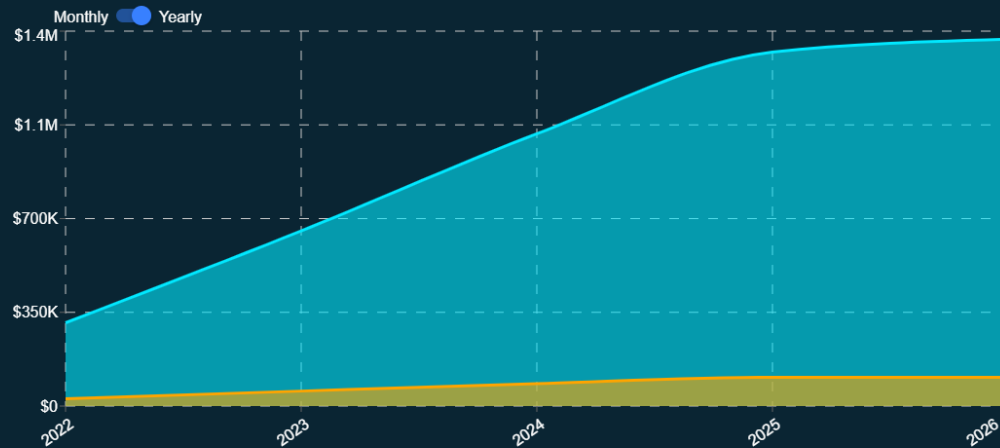
Energy Utilization Index (EUI):  
92.2

ENERGY DATA METERS

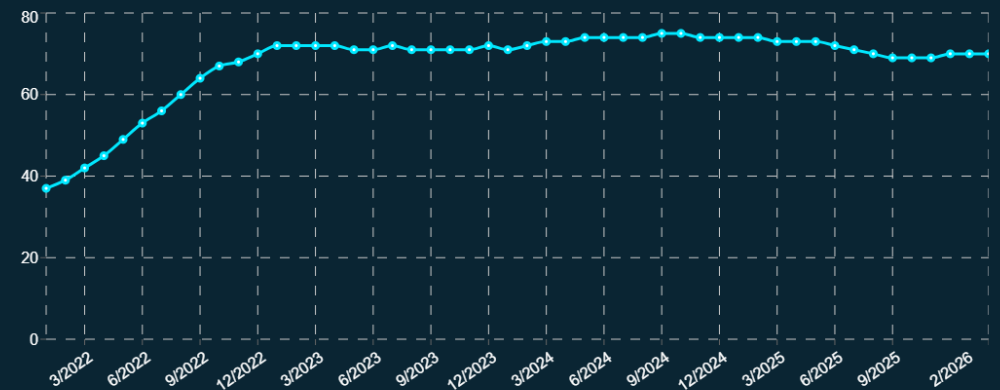
□ □ □

### Cost Avoidance

2022-01-01



### Energy Star Score



**“ Don’t be nervous. They’re going  
to exceed your expectations. ”**

—Josh Shelton, *Mechanical Engineer*



# Challenges Faced by Kingsley Jr High

*Normal, IL*

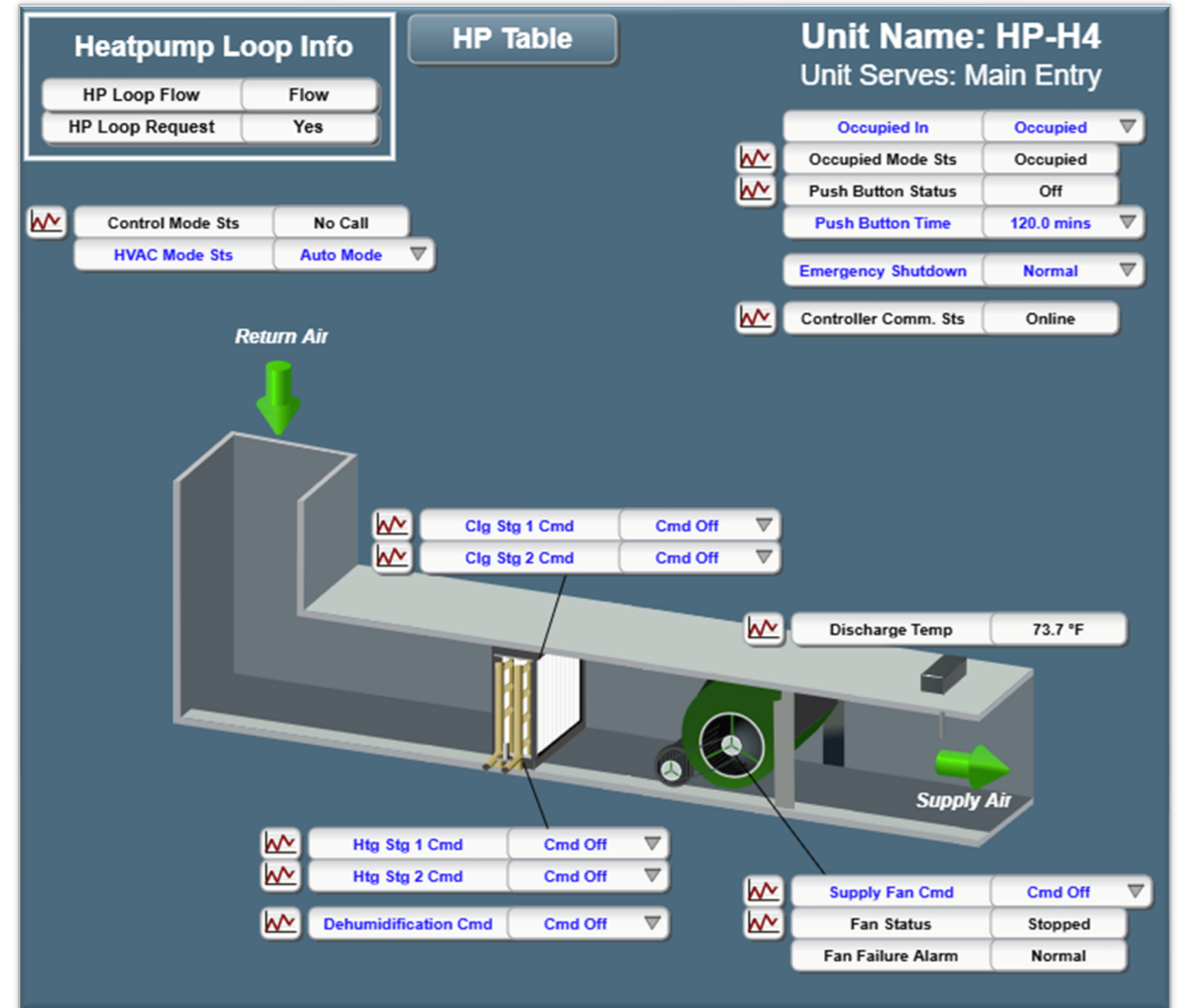
---

- **Two distinct parts of the building**
- **30+ year old infrastructure**
- **Failing Mechanical Systems**
- **Energy Star Score of 16**

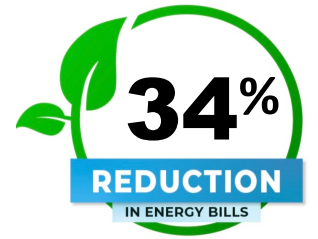
# Kingsley Junior High School Phase 1

## Addressing Mechanical Systems

- Replaced Older Section with Geothermal Heat Pump Infrastructure
- Modernized Temperature Control Technology
- Replaced Boilers in the Newer Section



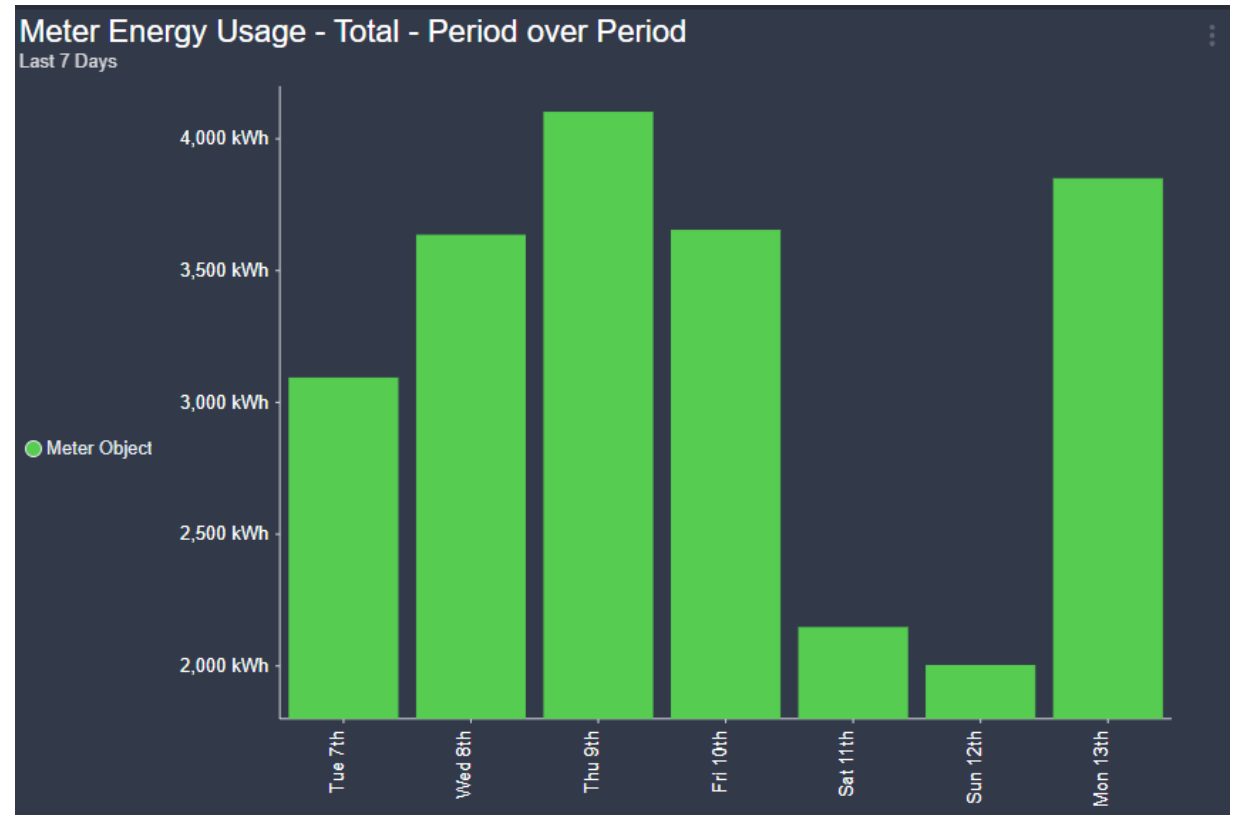


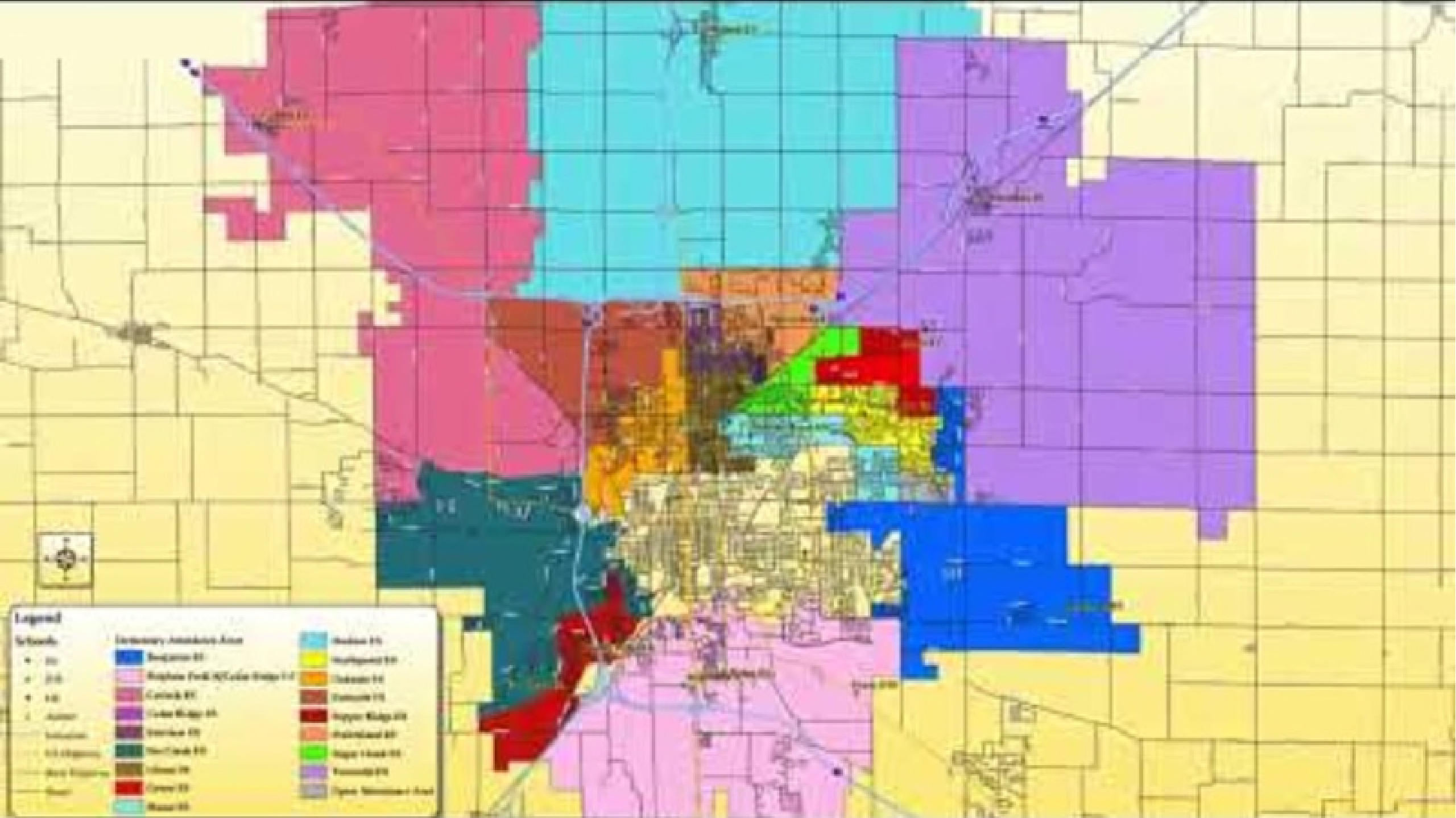


# Kingsley Junior High School Phase 3

*Making Energy Use Transparent*

- Smart Energy Meters Added
- Energy Kiosk & Dashboard
- Energy Use Transparency
- \$569,783 Saved (Since 2019)
- District Saves ≈\$1,000,000 annually





**Legend**

<b>Schools</b>	<b>Boundary, Attendance Area</b>	<b>Districts</b>
• 01	Blue	Madison 01
• 02	Pink	Waukegan 02
• 03	Light Blue	Northbrook 03
• 04	Light Purple	Rollingwood 04
• 05	Light Green	Winnetka 05
• 06	Light Orange	Upper Meriden 06
• 07	Light Yellow	Palmer Park 07
• 08	Light Red	Highland 08
• 09	Light Blue-Gray	Highland 09
• 10	Light Purple-Gray	Highland 10
• 11	Light Green-Gray	Highland 11
• 12	Light Orange-Gray	Highland 12
• 13	Light Red-Gray	Highland 13
• 14	Light Yellow-Gray	Highland 14
• 15	Light Blue-Gray	Highland 15
• 16	Light Purple-Gray	Highland 16
• 17	Light Green-Gray	Highland 17
• 18	Light Orange-Gray	Highland 18
• 19	Light Red-Gray	Highland 19
• 20	Light Yellow-Gray	Highland 20
• 21	Light Blue-Gray	Highland 21
• 22	Light Purple-Gray	Highland 22
• 23	Light Green-Gray	Highland 23
• 24	Light Orange-Gray	Highland 24
• 25	Light Red-Gray	Highland 25
• 26	Light Yellow-Gray	Highland 26
• 27	Light Blue-Gray	Highland 27
• 28	Light Purple-Gray	Highland 28
• 29	Light Green-Gray	Highland 29
• 30	Light Orange-Gray	Highland 30
• 31	Light Red-Gray	Highland 31
• 32	Light Yellow-Gray	Highland 32
• 33	Light Blue-Gray	Highland 33
• 34	Light Purple-Gray	Highland 34
• 35	Light Green-Gray	Highland 35
• 36	Light Orange-Gray	Highland 36
• 37	Light Red-Gray	Highland 37
• 38	Light Yellow-Gray	Highland 38
• 39	Light Blue-Gray	Highland 39
• 40	Light Purple-Gray	Highland 40
• 41	Light Green-Gray	Highland 41
• 42	Light Orange-Gray	Highland 42
• 43	Light Red-Gray	Highland 43
• 44	Light Yellow-Gray	Highland 44
• 45	Light Blue-Gray	Highland 45
• 46	Light Purple-Gray	Highland 46
• 47	Light Green-Gray	Highland 47
• 48	Light Orange-Gray	Highland 48
• 49	Light Red-Gray	Highland 49
• 50	Light Yellow-Gray	Highland 50
• 51	Light Blue-Gray	Highland 51
• 52	Light Purple-Gray	Highland 52
• 53	Light Green-Gray	Highland 53
• 54	Light Orange-Gray	Highland 54
• 55	Light Red-Gray	Highland 55
• 56	Light Yellow-Gray	Highland 56
• 57	Light Blue-Gray	Highland 57
• 58	Light Purple-Gray	Highland 58
• 59	Light Green-Gray	Highland 59
• 60	Light Orange-Gray	Highland 60
• 61	Light Red-Gray	Highland 61
• 62	Light Yellow-Gray	Highland 62
• 63	Light Blue-Gray	Highland 63
• 64	Light Purple-Gray	Highland 64
• 65	Light Green-Gray	Highland 65
• 66	Light Orange-Gray	Highland 66
• 67	Light Red-Gray	Highland 67
• 68	Light Yellow-Gray	Highland 68
• 69	Light Blue-Gray	Highland 69
• 70	Light Purple-Gray	Highland 70
• 71	Light Green-Gray	Highland 71
• 72	Light Orange-Gray	Highland 72
• 73	Light Red-Gray	Highland 73
• 74	Light Yellow-Gray	Highland 74
• 75	Light Blue-Gray	Highland 75
• 76	Light Purple-Gray	Highland 76
• 77	Light Green-Gray	Highland 77
• 78	Light Orange-Gray	Highland 78
• 79	Light Red-Gray	Highland 79
• 80	Light Yellow-Gray	Highland 80
• 81	Light Blue-Gray	Highland 81
• 82	Light Purple-Gray	Highland 82
• 83	Light Green-Gray	Highland 83
• 84	Light Orange-Gray	Highland 84
• 85	Light Red-Gray	Highland 85
• 86	Light Yellow-Gray	Highland 86
• 87	Light Blue-Gray	Highland 87
• 88	Light Purple-Gray	Highland 88
• 89	Light Green-Gray	Highland 89
• 90	Light Orange-Gray	Highland 90
• 91	Light Red-Gray	Highland 91
• 92	Light Yellow-Gray	Highland 92
• 93	Light Blue-Gray	Highland 93
• 94	Light Purple-Gray	Highland 94
• 95	Light Green-Gray	Highland 95
• 96	Light Orange-Gray	Highland 96
• 97	Light Red-Gray	Highland 97
• 98	Light Yellow-Gray	Highland 98
• 99	Light Blue-Gray	Highland 99
• 100	Light Purple-Gray	Highland 100

# THANK YOU

*We appreciate your time*