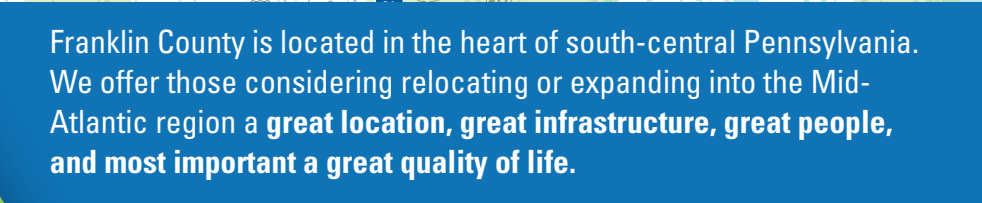




FRANKLIN COUNTY PROFILE 2022

YOU FOUND THE RIGHT PLACE...
'CAUSE IT DON'T GET NO BETTER THAN HERE



LOCATION, ACCESS, AND INFRASTRUCTURE...

One of Franklin County's greatest assets is its location and easy access to substantial and growing industrial and consumer markets. We are situated on one of the most heavily traveled Interstates in the Country and are within one day's drive of more than 50% of the North American population.

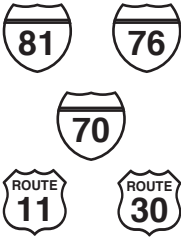


On average
50,780
vehicles

travel I-81 through
Franklin County on a daily basis...
an average increase of
more than 4,500 since 2019

*Source: PennDOT, Franklin County Traffic
Volume June 2021*

HIGHWAYS



Extensive network
of state owned/
maintained roadways

AIR



...75 minutes

...60 minutes

...10 minutes

RAIL



WATER



...75 minutes

and

...3 hours

– Spec Building, Wharf Road Industrial Park, Waynesboro

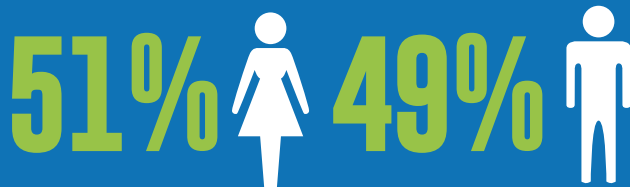


FRANKLIN COUNTY HAS “SHOVEL READY” SITES.

The County offers more than **1,200 acres** of developable land, all of which are conveniently located to major transportation corridors and public utilities.

Check out **fcadc.com** for an up-to-date database of available industrial real estate.

SOCIO-ECONOMIC PROFILE DEMOGRAPHICS...



Median Age
41.8 years

4.2%
population growth
since 2010

POPULATION INCREASE



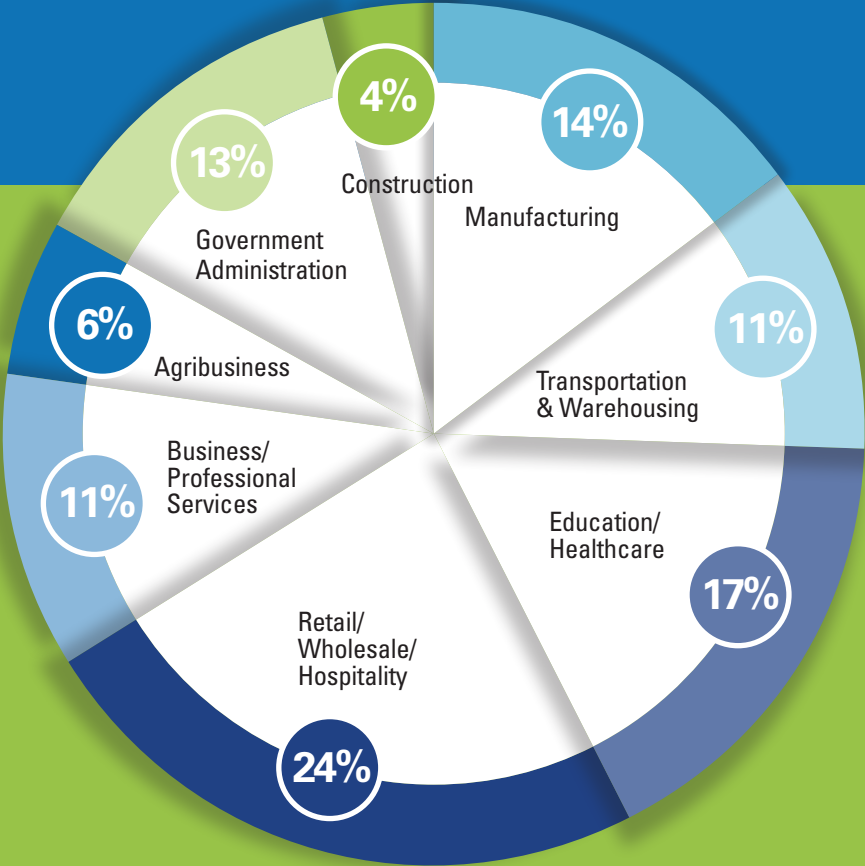
Franklin County
is among the
10 fastest growing
counties in the state

Source: Penn State Data Center, May 2021

ECONOMIC SNAPSHOT...

We like to mix-it-up...Franklin County boasts an extremely diversified economy.

Source: PA Department of Labor and Industry, Workforce Information News Release, Chambersburg-Waynesboro MSA, November 2021



5.4%

year-over-year wage growth in 2021. Median advertised salary of \$20.00 p/hr.

4.4%

unemployment rate in November 2021 down from a COVID-19 impact of 13.1%



Source: South Central PA Workforce Development Board, Economic Overview, Franklin County, Churma Economics and Analytics, November 2021

MAJOR EMPLOYERS...

Some of the most recognized companies in the world call Franklin County home.

TOP EMPLOYERS

WellSpan (Franklin County)	3650
Letterkenny Army Depot	2683
Target DC # 589	1375
Chambersburg Area SD	1170
Manitowoc Cranes	1100
Procter & Gamble	850
Volvo Construction Equipment	780
Martin's Famous Pastry Shoppe	725
Franklin County Government	697
Ventura Foods	676

TOP MANUFACTURING EMPLOYERS

Manitowoc Cranes	1100
Volvo Construction Equipment	780
Martin's Famous Pastry Shoppe	725
Ventura Foods	676
Johnson Controls/Frick	400
JLG Industries	330
DL George & Sons	276
TE Connectivity	223
New Enterprise Stone & Lime	221
TB Wood's	220

TOP LOGISTICS, WAREHOUSING & DC EMPLOYERS

Target DC # 589	1375
Procter & Gamble	850
ADUSA (Food Lion)	750
Ulta Beauty DC	600
Staples Direct	526
Instant Brands	500
Ingram Book Co	375
National Book Network	165
A. Duie Pyle	125
Franklin Logistics & Dev.	115

SKILLED TALENT

Franklin County's prime location along Interstate 81 is critical to attracting talent from the Quad-State Region of Maryland, West Virginia, and Virginia, as well as other counties throughout southcentral, PA. The region boasts a civilian labor force of more than 600,000 highly skilled and dependable workers within 45 miles of the heart of Franklin County!

Source: US Bureau of Labor Statistics, Labor Force Data by County, November 2021



**In 2021, jobs in
Franklin County
were up**

2.6%

600,000 workers

“The types of jobs being developed in Franklin County are software developers, mechatronics, and electrical engineers & technicians.”

- Jesse McCree, CEO, SCPa Works, Inc.

**Franklin County
CareerTech**





TOTAL GDP was more than
\$5.6 Billion
 in 2020.



Franklin County's world class
 manufacturers contributed more than
\$1.1 Billion
 gross domestic product in 2020...
 the most of any sector.



Healthcare was the
 next largest sector with
\$746 Million



20+ Million
square feet
 of logistics space in
 Franklin County.

Source: South Central PA Workforce Development Board, Economic Overview,
 Franklin County, Churma Economics and Analytics, December 2021



Volvo Construction
 Equipment



New Enterprise
 Stone & Lime Co., Inc.



TB Wood's
 Altra Industrial Motion

AGRIBUSINESS is a big deal.



2nd in the state
for the production of milk, cattle,
apples, peaches, and corn for silage.



17,700 acres
of production ag land have been
preserved for future generations.



10th in acres
preserved in PA

Source: Harvested Cropland and Vegetables in the Commonwealth, Penn State Data Center, October 2019



There are nearly

1,500 family farms

in Franklin County that generate more than

\$476 Million

in annual GDP



40% of County land is in crops...
ranking #2 in the state.



AQUACULTURE...THE GOLD STANDARD SINCE 1923.

One of the largest ornamental goldfish and koi hatcheries in the World, Mt. Parnell Fisheries ships quality fish every week of the year from south-central Pennsylvania, mainly to wholesalers in the United States, Canada, and Europe.

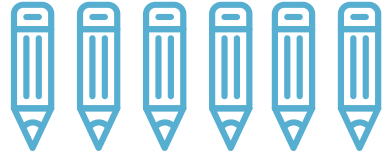
FRANKLIN COUNTY

is a great place to work, live, and play...

EDUCATION

To build the talent that growing businesses need, Franklin County provides a broad spectrum of quality educational opportunities. Options range from pre-school through post-secondary.

The County is within a two-hour drive of Penn State University (University Park), one-hour drive of the HACC main campus, and one-half hour drive from Gettysburg College and Dickinson College. In addition, the Hagerstown, MD Community College (HCC), Purdue University Global of Hagerstown, MD, Mount St. Mary's University, and The University System of Maryland at Hagerstown are within a 15-minute drive of Franklin County.



6 PUBLIC SCHOOL DISTRICTS



3 COLLEGES/UNIVERSITIES

PLUS



and

**Chambersburg Career
Magnet School**

Home to the prestigious
**Mercersburg
Academy** as well as
other private institutions





Pittsburgh-based two-year technical school, Triangle Tech, Inc., operates a state-of-the-art welding training facility in Chambersburg to better serve the world class manufacturing employers in South Central Pennsylvania. The local facility is fully accredited and offers post-secondary students the opportunity to earn an Associate Degree in Specialized Technology (AST) in Welding and Fabrication Technology. Additional curriculum is being planned.

Visit triangle-tech.edu for more information.

COLLEGES AND UNIVERSITIES IN FRANKLIN COUNTY INCLUDE:



- **Shippensburg University** (rated Top 100 of America's Best Regional Universities (North) by US News and World Report)



- **Penn State University-Mont Alto** ((rated #63 of America's Best National Universities by US News and World Report)



- **Wilson College** (rated #126 of America's Best Regional Universities (North) by US News and World)

Source: US News and World Report, America's Best College's 2021

FACULTY
OFFICE

Generously donated by
Franklin County Area
Development Corporation

In 2021, The Franklin County Career and Tech Center opened a new LPN program building. The FCADC is a proud financial supporter of the LPN program.

PRACTICAL NURSING PROGRAM
GRACE GILBERT BROOKS BUILDING

HEALTHCARE

Our healthcare is focused on Patient Care...

WellSpan Health, is recognized as an award winning, cost effective, high-quality healthcare system. WellSpan is the parent company to:

- **Chambersburg Hospital**
 - 285 bed acute and critical care facility providing diagnostic, behavioral health, and surgical services with 24-hour emergency room service
- **Waynesboro Hospital**
 - 57 bed hospital providing acute and critical care services including diagnostic, therapeutic, and surgical services with a 24-hour emergency room
- **Multiple Urgent Care Centers**
- **Multiple Walk-in Care Centers**



Keystone Health

Franklin County is also served by Keystone Health, a nationally recognized, Federally Qualified Community Health Center. Keystone operates several state-of-the-art locations throughout the County and employs more than 600 healthcare professionals. Visit keystonehealth.org for additional information.



PUBLIC SAFETY

We have a low Crime Rate...

The County boasts an extremely low crime rate across all categories of offenses. In 2020, the crime rate was .05% per 1,000 people...well below the national average.

Source: Economic Overview, EMSi Economic Modeling Q4 2021 Data Set, December 2021

HOUSING

Franklin County offers an expanding range of affordable housing opportunities

- 66,368 total estimated housing units
- \$1,402 Average Monthly Housing Ownership Costs (with mortgage)
- \$899 Average Gross Rental Costs



Median Home Value
\$180,400

**Median Household
Income**
\$63,379

Source: US Census Bureau, Franklin County, PA Quick Facts, December 2021 & Churma Economics and Analytics

Cost of living in Franklin County is
6.7% LOWER
than the US average

Source: US Census Bureau, Franklin County, PA Quick Facts, December 2021 & Churma Economics and Analytics

TAXES

Pennsylvania does NOT levy a tax on inventory, tangible personal property, machinery, or equipment. Additionally, machinery and equipment used directly in the manufacturing process is exempt from state sales tax.

The following is a summary of the most common business taxes.

Personal Income Tax (PIT)

- The current rate is **3.07%**

Corporate Net Income Tax (CNI)

- The current rate is **9.99%**

Real Estate Transfer Tax

- The current rate is **2.0%**

Local Real Estate Property Tax

- Levied by Municipalities, School Districts and County Government
- Rates vary

Sales & Use (SUT) Tax

- The current SUT is **6.0%**

Unemployment Compensation Tax (UC)

- Paid on the first **\$10,000** of wages for each employee on an annual basis

Workers' Compensation

- Mandatory coverage of certain employees engaged in the "regular course" of the employer's business

Source: Pennsylvania Department of Revenue and Pennsylvania Department of Labor and Industry

Depending on the locality there could be other taxes that are administered. For detailed taxes and rates see: <https://dced.pa.gov/local-government/local-income-tax-information/>

ECONOMIC DEVELOPMENT INCENTIVES...

In Franklin County, businesses have access to myriad incentive programs designed to support long-term business growth. Some of the more widely used programs include assistance for real estate purchases, construction, and renovations, as well as machinery and equipment upgrades and workforce development.

For a complete listing of economic development incentive programs, please contact FCADC.

Note: Certain programs are subject to availability of funds and job creation requirements.

All programs require an application in order to access funds.



TOURISM

is a major component of the Franklin County economy.

1,850 hotel rooms support visitation in excess of 500,000 people annually, which results in a direct economic impact of \$338 Million and supports over 2,600 jobs.

Source: Franklin County Visitor's Bureau, December 2021



1,850
hotel rooms



\$338 Million
direct economic impact



2,600
jobs

FRANKLIN COUNTY

The County is home to a wide variety of recreation and cultural opportunities. Just look at some of the things we have.

Whitetail
Ski Resort,
Mercersburg

- **Whitetail Resort (skiing/golf)**
- **Penn National Golf Resort (additional public and private golf courses in the area)**
- **Capital Camps & Retreat Center**
- **President James Buchanan Birthplace and Buchanan State Park**
- **Michaux, Buchanan, and Tuscarora State Forests**
- **Camp Penn State Park**
- **Hunting and Fishing on abundant state game lands**
- **The Appalachian Trail (The Greater Waynesboro Area is a designated "Appalachian Trail Community")**
- **The Monterey Pass Battlefield Park and Museum**
- **Capitol Theatre**
- **Caledonia State Park and Totem Pole Playhouse**
- **H. Ric Luhrs Performing Arts Center at Shippensburg University**
- **Renfrew Institute for Cultural and Environmental Studies**
- **Tayamentasacta Environmental Center**
- **Tuscarora Wildlife Education Project**
- **Extensive Network of Municipal Parks and Trails**
- **Multiple Community-based festivals and carnivals (seasonal)**
- **Community Farmer's Markets (seasonal)**



FRANKLIN COUNTY is the center of the scenic Cumberland Valley. With reasonable lodging rates and more than 1,850 hotel rooms, the County's convenient location couples early frontier, Underground Railroad, and Civil War history with seasonal beauty, year-round recreation, and old-fashioned, hometown appeal. In addition, the County is within 30 minutes of historic Gettysburg and Antietam National Military Parks and 15 minutes of Hagerstown, MD; 30 minutes of Frederick, MD; 60 minutes of Harrisburg, PA; and within 75 minutes of the Baltimore/Washington D.C. metro areas, thus creating even more access to recreation, shopping, and cultural activities.

IMPORTANT FRANKLIN COUNTY WEB LINKS

Greater Chambersburg Chamber of Commerce

chambersburg.org and
cvballiance.org

Greater Waynesboro Chamber of Commerce

waynesboro.org

Greencastle-Antrim Chamber of Commerce

greencastlepachamber.org and
cvballiance.org

Tuscarora Area Chamber of Commerce

tachamber.org

Shippensburg Area Chamber of Commerce

shippensburg.org

County of Franklin (Government)

franklincountypa.gov

Franklin County Visitor's Bureau

explorefranklincountypa.com

PA CareerLink Franklin County

pacareerlink.pa.gov

Shippensburg University Small Business Development Center

ship.edu/sbdc

Franklin County Works

franklincountyworks.com

WellSpan Summit Health

wellspring.org

Keystone Health

keystonehealth.org

United Way of Franklin County

uwfcpa.org

Healthy Franklin County

healthyfranklincounty.org



1900 Wayne Road, Chambersburg, PA 17202 | 717.263.8282 | 717.263.0662 fax | fcadc.com

The Franklin County Area Development Corporation is an award-winning Economic Development Agency charged with formulating, implementing, and promoting a comprehensive countywide economic development strategy. The Corporation strives to create an atmosphere that nourishes planned growth and family sustainable employment opportunities.

