



THE FUTURE^{OF} HISTORY

Campaign for the NATIONAL MUSEUM
OF BERMUDA







THE FUTURE OF HISTORY IS PEOPLE LIKE US

The National Museum of Bermuda (NMB) is home to our cultural past and our collective future. We continue to grow as a must-see museum, educational resource, and research facility thanks to our loyal community and supporters.

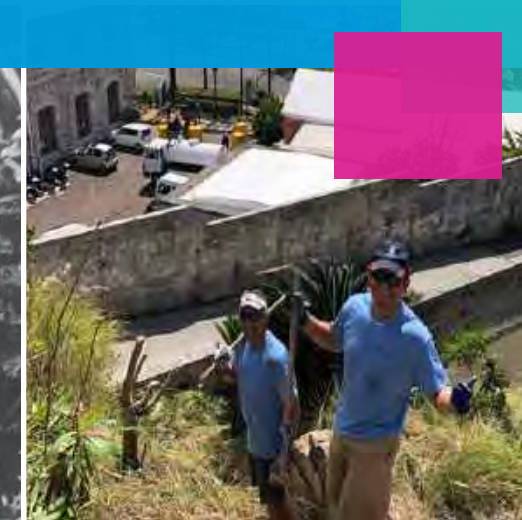
Our expertise elevates conversations in Bermuda and beyond. We bring broad and deep perspective, as well as innovation, to increasingly urgent conversations. Knowing, understanding and appreciating our history and heritage enables us all to better navigate the present and answer the question: *Who am I and where do I fit in?*

This important work is possible thanks to philanthropy and partnerships—together, we are building the **Future of History** at the **National Museum of Bermuda**.



“NMB is a national treasure helping us define who we were, who we are and who we can be.”

**COMMUNITY COMMENT
THE ROYAL GAZETTE**



Dear Friends,

The National Museum of Bermuda (NMB) began as the dream of just a few. We remain strong today thanks to a history of committed partners, generous donors, and determined resolve. We are a collective voice for and about Bermuda. Now is the time to develop an even stronger Museum and promising future.

Our track record is one of outstanding research and impressive exhibits that share our Island's historic ties to the Atlantic World and our contemporary global influence.

Through our collections, exhibits, and programmes NMB offers insights into contemporary challenges and promotes understanding of Bermuda's history and culture. Moving forward, our role as an educational resource and our international stature will be secured thanks to supporters who share our urgent priorities.

We have reached a pivotal moment when our resources must align with our aspirations. The Museum's temporary closure in early 2020—during which staff expanded outreach and available digital resources—accelerated our educational efforts and demonstrated how an active National Museum strengthens community. During times of disruption, history and culture can be a part of what helps to keep us together.

NMB's leaders are now re-envisioning our community interactions, our research facilities and our learning environments so that each Museum visit sparks learning, curiosity and conversation. Our impact and the Museum's future are stronger and more promising than ever before.

Please join us on our journey to the **Future of History**.



DR. JANET FERGUSON
CAMPAIGN CO-CHAIR AND EDUCATION COMMITTEE CHAIR



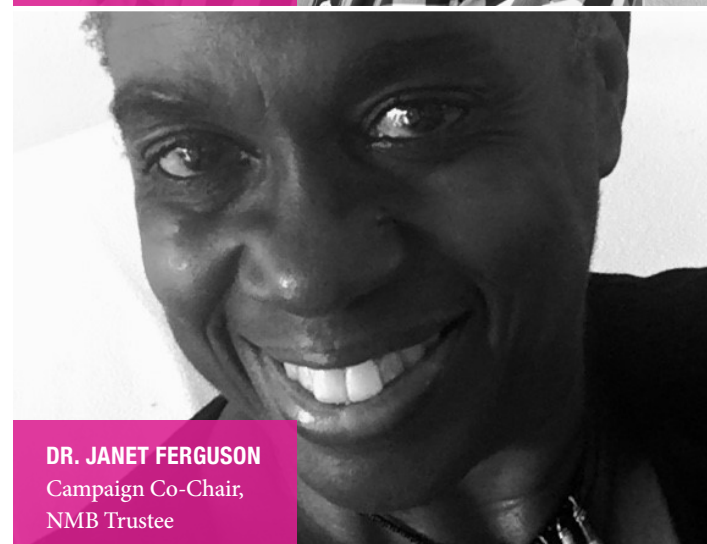
REES FLETCHER
CAMPAIGN CO-CHAIR AND BOARD CHAIRMAN



ELENA STRONG
EXECUTIVE DIRECTOR



REES FLETCHER
Campaign Co-Chair,
NMB Board Chairman



DR. JANET FERGUSON
Campaign Co-Chair,
NMB Trustee



ELENA STRONG
Executive Director



THE FUTURE OF HISTORY IS PRESSING

Bermuda's history is far more than a collection of dates, historic events and objects. Learning history is fundamental—it provides context for contemporary issues and challenges.

History is also a shared experience. The global pandemic continues to impact a global pandemic impacted millions of lives, local economies and the very day-to-day experience of learning. In response, the Museum accelerated community-based projects to capture this contemporary history and document it for future generations.

To do this critical work, NMB must continue to promote education, research and community engagement. Our education priorities support Bermuda's capacity to effectively navigate the next decade. As a National Museum, we are committed to being an educational resource where everyone in Bermuda sees their story represented within our walls and when history is taught.

There is more to be done, and the time is now.

"Our community depends on NMB to share the past, make sense of the present and help shape our future."

ELENA STRONG
EXECUTIVE DIRECTOR

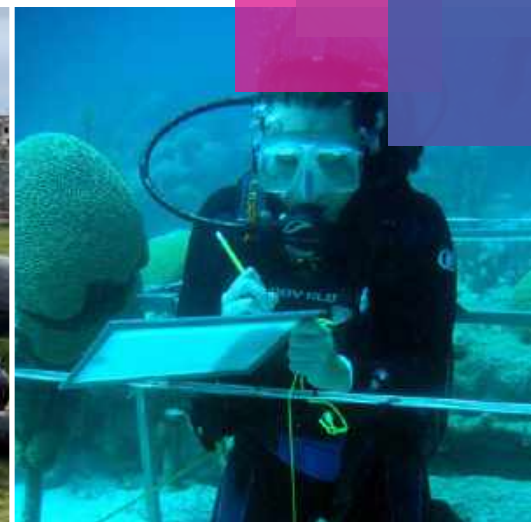
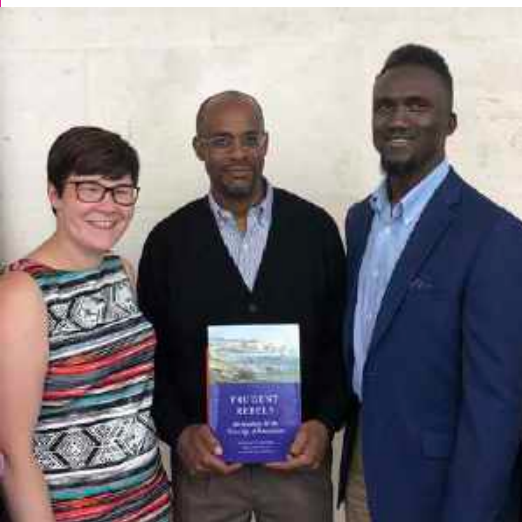
THE FUTURE OF HISTORY IS PRESCHOOL TO PhD

Education: Our Imperative

NMB's programming reaches preschoolers and youth as well as the public and graduate students. More and more, curious students are looking to understand the forces that have shaped their identities and their day-to-day lives. NMB encourages using history and heritage to explore such questions and is creating a pipeline of programmes from preschool to post-doctorate.

We are more than Bermuda's largest fort. We are a National Museum sparking and supporting lifelong learning and helping our community use history to contextualise today's most pressing issues. We provide context and nuance to 500 years of Bermuda history. Our Island's impact extends far beyond our shores, and is deeply intertwined with the histories of Africa, the Americas, the Caribbean and Europe. Our stories are worthy of vast audiences and NMB is the ideal location to explore this history and learn about who we are in relation to the world and to each other.

Thanks to our supporters, NMB is expanding outreach – to students of all ages – and envisioning learning spaces that inspire, engage and cater to contemporary learners. Through investments in both what we share and how we share the many voices that comprise Bermuda, we are enhancing the Museum experience for all.



THE NATIONAL MUSEUM IS BECOMING PART OF EVERY EDUCATIONAL JOURNEY IN BERMUDA

TEACHERS AND STUDENTS

- We provide professional development and resources that make history relevant
- We share contemporary academic research, teaching techniques, and provide content that reflects Bermuda's diversity
- We aim to shift how history is taught across Bermuda's classrooms, for all ages

RESEARCHERS AND INTERNS

- We have 35+ years of collaborations with international universities and museums
- We support field schools and host interns and graduate-level researchers

EVERYONE

- We are a nexus for lifelong learning
- We share our collections through digital platforms and are expanding our reach
- We make history accessible and relevant so that everyone can experience NMB in new and thoughtful ways

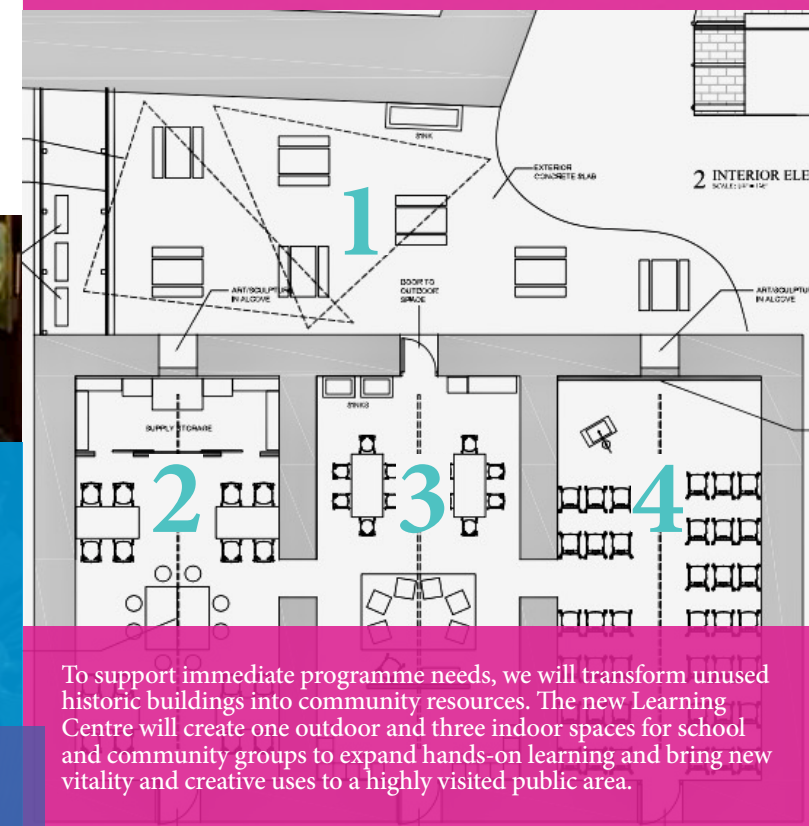


"The National Museum of Bermuda will be a primary and vital resource to our curriculum development."

NICOLE GRANT
EDUCATION OFFICER, SOCIAL STUDIES,
DEPARTMENT OF EDUCATION



1837: Shifting House: future home the new Learning Centre



To support immediate programme needs, we will transform unused historic buildings into community resources. The new Learning Centre will create one outdoor and three indoor spaces for school and community groups to expand hands-on learning and bring new vitality and creative uses to a highly visited public area.

THE FUTURE OF HISTORY IS POSSIBILITY

Casemates: Our Opportunity

The National Museum is committed to historic preservation and to reimagining derelict buildings as public resources. Our tradition of saving Bermuda's cultural assets continues with plans to repurpose Casemates for new, ambitious uses. These buildings have a future that will raise NMB's stature and support our local economy. Interest in advance academic Atlantic World research, which supports the development of a more complete and inclusive history of Bermuda, is growing and opportunity knocks.

The Casemates Barracks have played a significant role in 200+ years of local and global events. These buildings once housed the famous Scottish "Black Watch", British military officers, Canadian Navy training school tracking German U-boats and most recently, incarcerated men as it served as Bermuda's maximum-security prison.

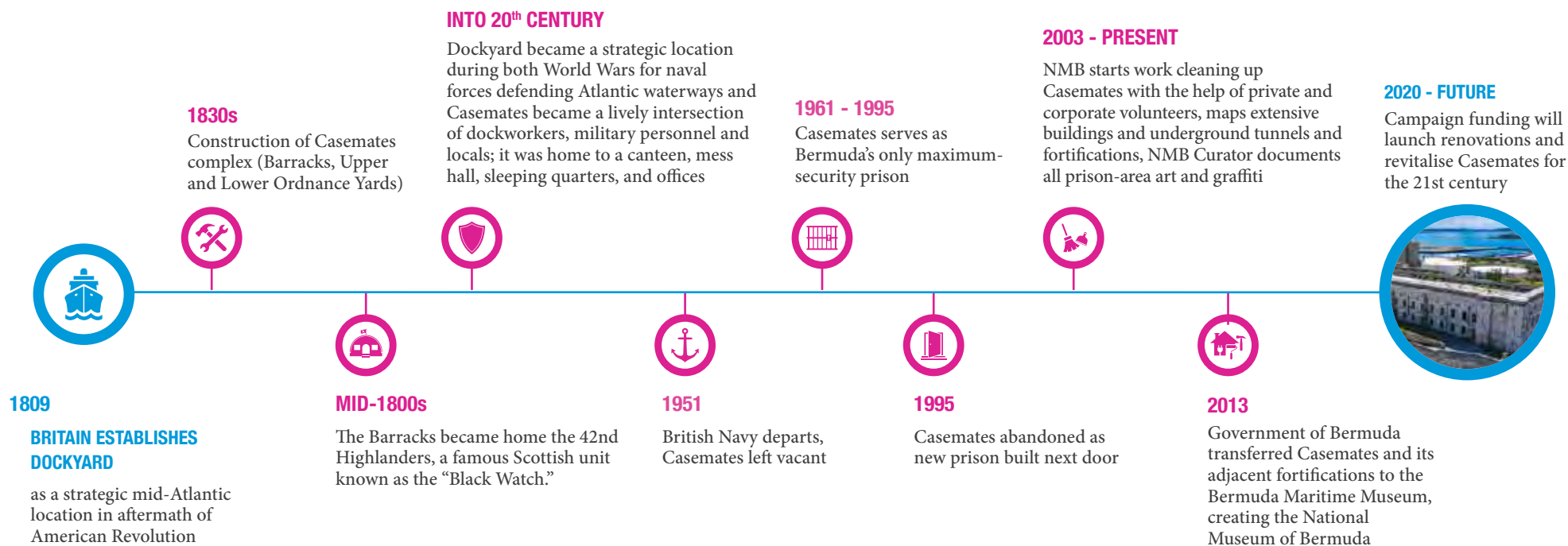
Yet, the simplest of natural forces – wind, rain and invasive vegetation – are wreaking havoc as the buildings await their next use.

These buildings must not be lost. They help us understand how colonisation, commerce, warfare and confinement have each played a role in shaping Bermuda. In the years to come, we envision the Casemates buildings as active, vibrant learning spaces dedicated to scholarship and international partnerships.

To begin, we must dry out and save the buildings. Through strong philanthropic partnerships, the important first phase of repurposing 33,000+ square feet of built space and exterior grounds will begin. Our effort will transform an obligation to preserve our Island's cultural assets into an opportunity for Bermuda and beyond.

"Few buildings combine technical engineering, beauty and complex stories as Casemates does."

DR. DEBORAH ATWOOD
CURATOR, NATIONAL MUSEUM
OF BERMUDA



THE FUTURE OF HISTORY IS PRIORITY

The Annual Fund: Our Bermuda, Your Museum

Through the Annual Fund, everyone can make NMB a priority. Annual operating funds are the backbone of everything we do. Generous donations to the Annual Fund enable NMB to address immediate needs and adapt rapidly when unexpected challenges arise, without compromising valued public programmes and curatorial work.

Each year, supporters of the Annual Fund provide free admission to thousands of children under 16 and signal a shared commitment to NMB becoming an increasingly community-based museum.

This work is more urgent than ever. Gifts to the Annual Fund accelerate the pace of education and outreach initiatives, maintain our 11 historic buildings, support our dedicated staff and safeguard the 80,000+ objects in our collection.

In the past four years, the Annual Fund supported:

20,042 FREE ADMISSIONS FOR CHILDREN
UNDER THE AGE OF 16

3,100 FREE ADMISSIONS FOR LOCAL
BERMUDA RESIDENTS EACH FEBRUARY



EDUCATION ENDOWMENT

For nearly fifty years, NMB has stepped in to save and secure Bermuda's past. Now we are securing our future. NMB is investing in an Education Endowment so that new programmes have ongoing support. The Endowment benefits today's and tomorrow's students, forever.



THE FUTURE OF HISTORY IS NOW

Bermuda has always been a busy intersection in the bustle of the larger Atlantic World; our heritage sites speak to our significant history and promising future. As your National Museum, we are launching a campaign to preserve and share our history, heritage and culture for those who live here, for those discovering our Island, and for all who love Bermuda.

A GIFT TO THE FUTURE

Our objective is to raise **\$8,500,000+** in philanthropic support to offer education programmes to students, teachers and everyone Bermuda inspires. With your support, we will save Casemates and ensure that NMB has the strongest future imaginable through increased annual donations and a growing endowment. We are grateful of your consideration and ask, will you join us?

FUNDING PRIORITIES AS NUMERIC GOALS

\$3.5M EDUCATION

\$3.5M EXPANSION

\$1.5M OPERATIONAL STABILITY



RECOGNITION OPPORTUNITIES

We would be proud to acknowledge your NMB support and invite you to speak with us about your personal preferences. Select Naming Opportunities for our most generous donors include:

CORNERSTONE RECOGNITION

\$1,000,000+	Casemates Front Entrance New Learning Centre (1837 Shifting House) Boat Loft (1853/1890 Ordnance House)
\$500,000+	Learning and Engagement Leadership New Education Zone Northwest Rampart Restoration Boat Loft Galleries (2)

LEADERSHIP RECOGNITION

\$250,000+	Boat Loft Annex New Visitor Walkway Teacher Professional Development Programme Community Adult Programme Community Youth Programme
\$100,000+	Learning Centre Classrooms (4) Boat Loft Exhibition Galleries (3)



THE FUTURE OF HISTORY IS POWERFUL

Your gift will impact the Museum, Bermuda and future generations.

As a partner of NMB, you will:

- Ensure that a vital, National Museum is at the center of community life
- Inform today's most urgent conversations with historical perspective and clarity
- Inspire people in Bermuda and visitors to think critically about our Island's role in global events as well as their own lives and the forces shaping current events
- Educate thousands of students about Bermuda's central role and impact on a bustling Atlantic World
- Celebrate Bermuda's diverse communities
- Elevate Bermuda's role in global events and historic forces
- Empower learners of all ages and build the education spaces to support them
- Reimagine the legacy of Casemates, a project for today and tomorrow's Bermuda

"Supporting the Campaign—to preserve the past and strengthen our future—is a gift to Bermuda and a gift to ourselves"

DR. JANET FERGUSON
CAMPAIGN CO-CHAIR





THE FUTURE OF HISTORY IS THE NATIONAL MUSEUM OF BERMUDA

About NMB

Located at the historic Royal Naval Dockyard and commanding Bermuda's westernmost point, NMB is a non-government, not-for-profit organisation created by the Bermuda National Trust in 1974 as the Bermuda Maritime Museum. The Museum has since expanded beyond its original mandate, which focused on maritime history and restoration of Bermuda's largest fort, the Keep.

Over the past four decades we have transformed once derelict ramparts, bastions and historic buildings into a first-class Museum. We have built Bermuda's largest collection of historic objects, partnered with overseas institutions to carry out archaeological and historical research, and re-imagined our historic military buildings as exhibition and education spaces, research labs, and event venues.

With the support of the Government of Bermuda, we acquired the Casemates complex in 2013, officially becoming the National Museum of Bermuda—growing from a 10- to 16-acre property. We are now the largest attraction in Dockyard and help to make this area the most visited historical district in Bermuda.



CAMPAIGN LEADERSHIP

CAMPAIGN CO-CHAIRS

DR. JANET FERGUSON
REES FLETCHER

CAMPAIGN HONOURARY CHAIR

DR. EDWARD C. HARRIS

CAMPAIGN EXECUTIVE COMMITTEE

ROBERT BLEE
MICHAEL J. A. DARLING, JR.
GEORGE FERGUSON
COLIN FLEMING
RU-ZELDA SEVERIN
ALISON SWAN
CHARLES THRESH
RICHARD WINCHELL

NMB BOARD OF TRUSTEES

Rees Fletcher, *Chairman*
Dr. Douglas De Couto, *Vice Chairman*
Matt Claridge, *Treasurer*
James Watlington, *Secretary*

Robert Blee
Jazmin Da Ponte
Andrew Dias
Jennifer Davidson
Tim Davidson
Dr. Kim Dismont Robinson
Dr. Janet Ferguson

Pamela Ferreira
Michael Grayston
James Hallett
Michael Maguire
Dr. Clarence Maxwell

Isabelle Ramsay-Brackstone
Ru-Zelda Severin
Robert Steinhoff
Neil Stempel
Charles Thresh
Col. Sumner Waters



NATIONAL MUSEUM
OF BERMUDA

*To be part of
The Future of History contact:*

NMB OFFICE

441-234-1333

KATIE BENNETT, ADVANCEMENT OFFICER

advancement@nmb.bm

COURIER ADDRESS:

1 The Keep, Sandys MA 01 Bermuda

POSTAL ADDRESS:

PO Box MA 133, Sandys MA BX Bermuda

WEBSITE:

www.nmb.bm/campaign



**NATIONAL MUSEUM
OF BERMUDA**

National Museum of Bermuda is a
non-government and non-profit
organisation.

(Bermuda Charity No. 136)