

# COMMANDO PROCEDURE

AN OPERATION 30 YRS IN THE MAKING.



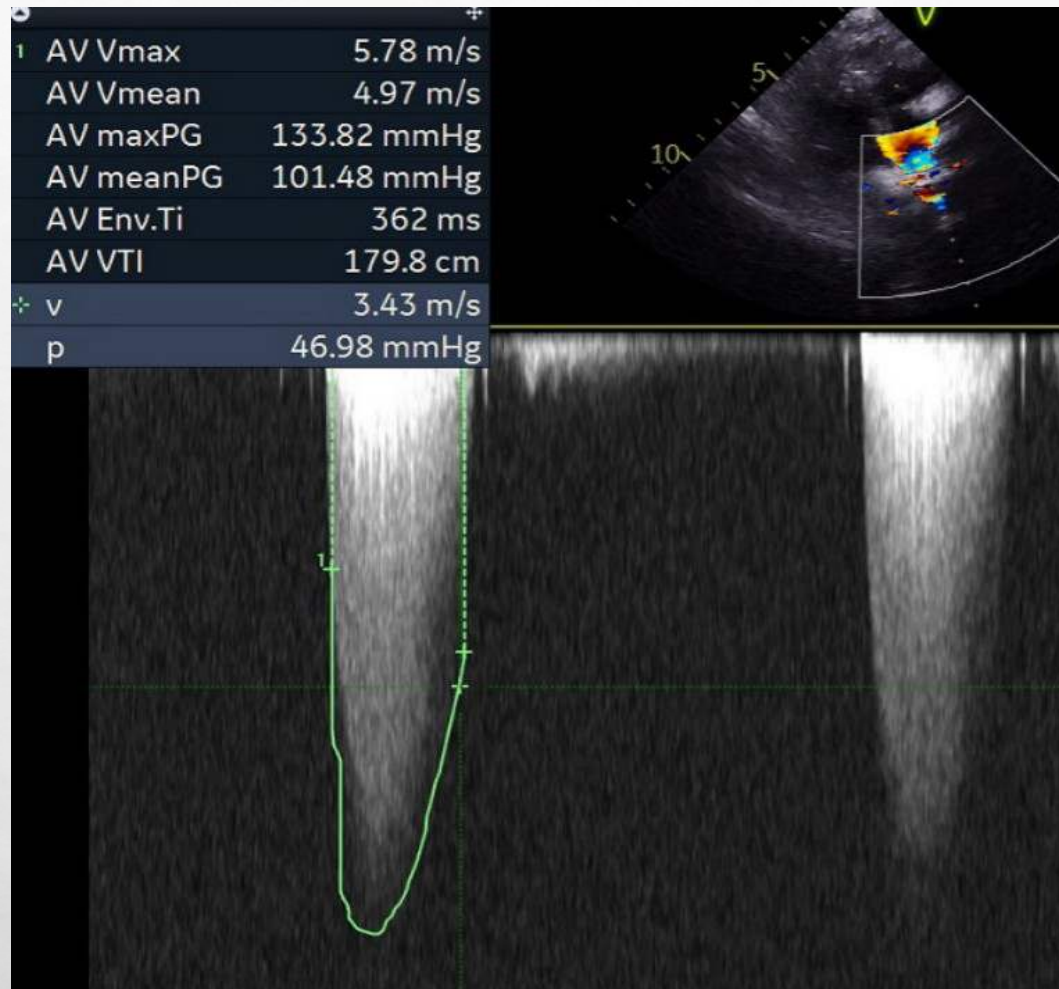
# THE LONG SEARCH

- OPINIONS OF TWO **GREAT** INNOVATORS

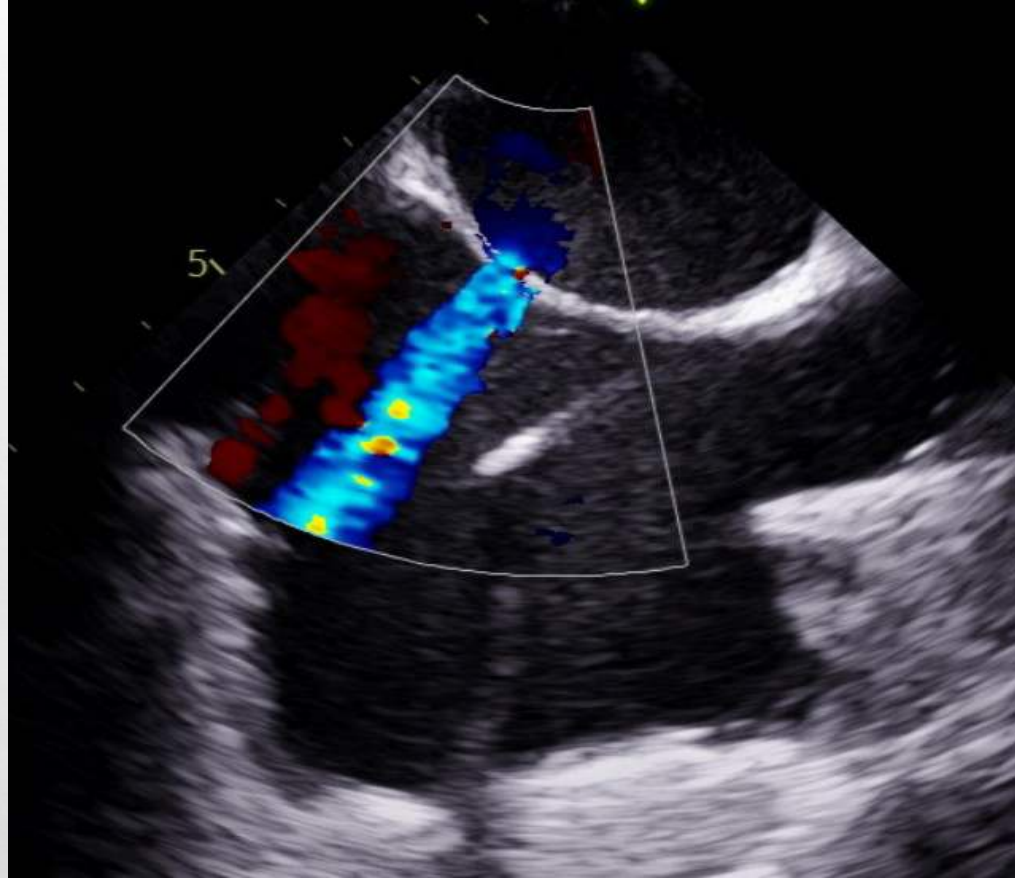
# PATIENT HISTORY

- **75 YO WF WITH CO OF SOB AND CHEST PAIN WITH MINIMAL AMBULATION.**
- **CANNOT WALK 100 FT OR DO A HALF FLIGHT OF STEPS**
- **4 YRS SP AVR WITH 19 MM PORCINE AND 25 MM PORCINE MITRAL VALVE**
- **ENTEROCOCCUS SEPTICEMIA TREATED FOR 4 MONTHS**
- **VEGETATIONS ON MITRAL PROSTHESIS AND ANNULUS**
- **GRADIENT OF AORTIC VALVE PROSTHESIS AND LVOTO**
- **REJECTED FOR REDO SURGERY BY PRIMARY TEAM AT ORIGINAL HOSPITAL.**

# TTE



# TEE

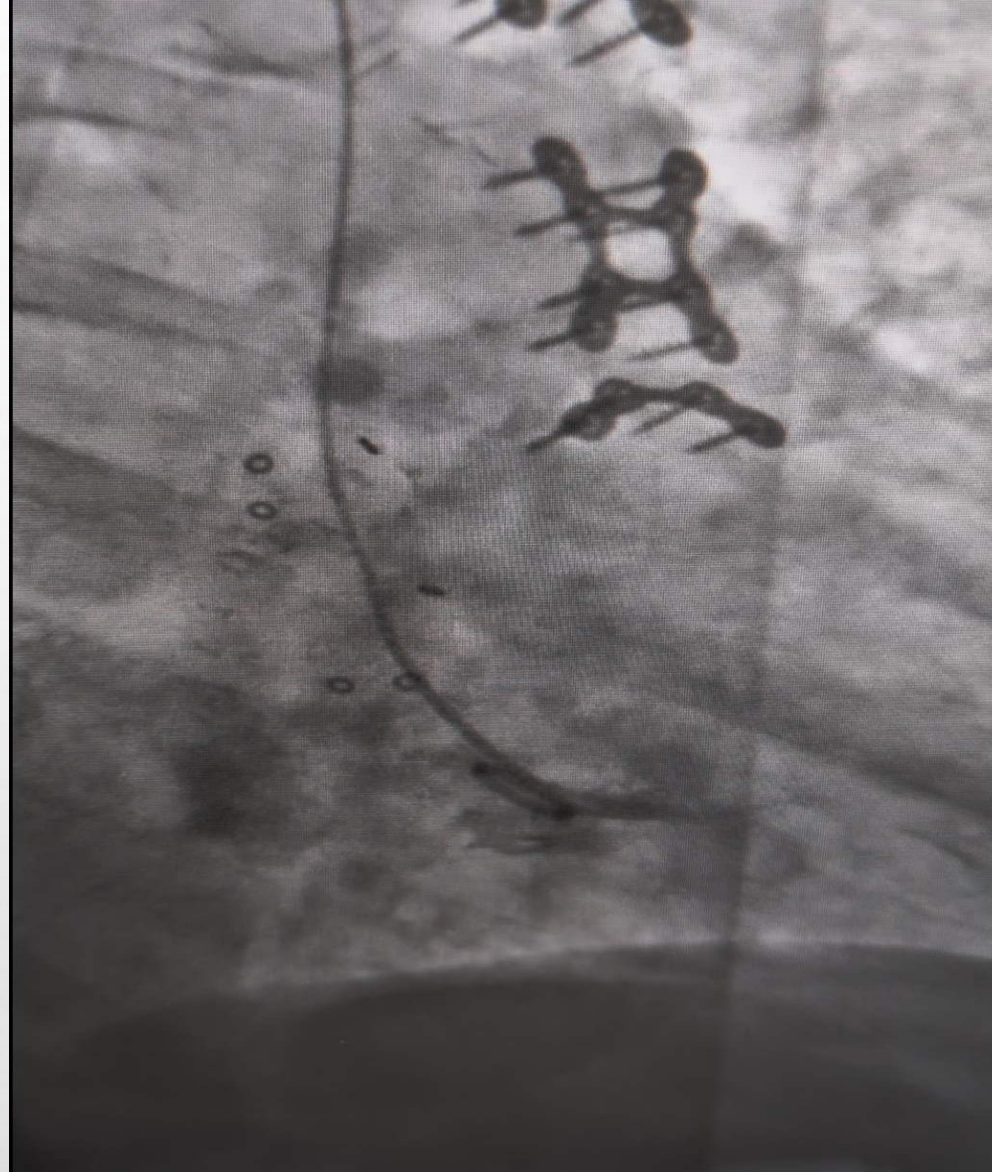


**TEE**



# ANGIOGRAM

- **CORONARIES OK**
- **LVEDP OF 45 MMHG**
- **SEPTAL HYPERTROPHY**
- **144 MMHG PEAK GRADIENT**
- **NO MR**



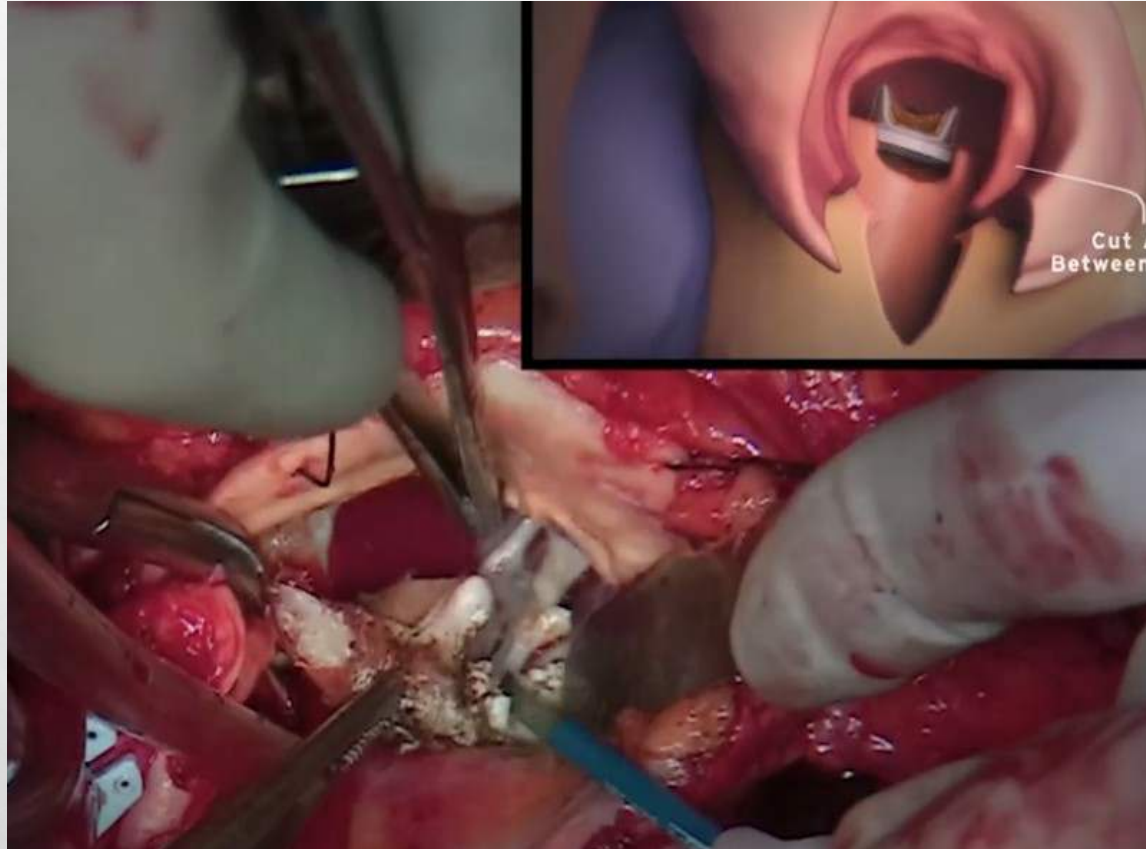
# TREATMENT OPTIONS

- **DO NOTHING**
- **TAVR IN 19 MM AORTIC VALVE, ABLATE SEPTUM, MVR VIA THORACOTOMY AT A LATER DATE.**
- **STANDARD DOUBLE VALVE REDO OPERATION WITH ROOT ENLARGEMENT AND TAVM**
- **COMMANDO PROCEDURE (FINALLY FOUND ONE)**

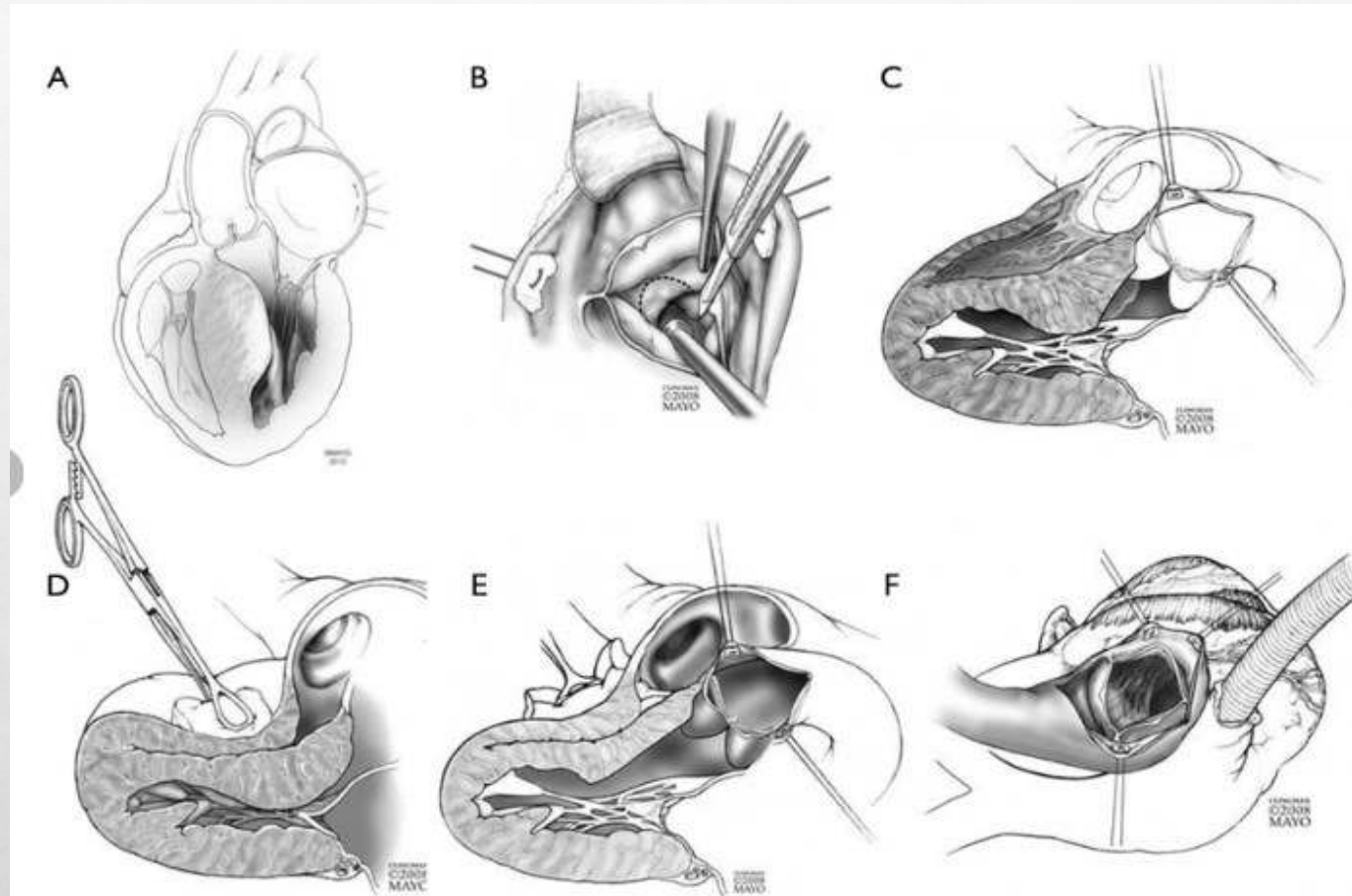
# Commando Procedure



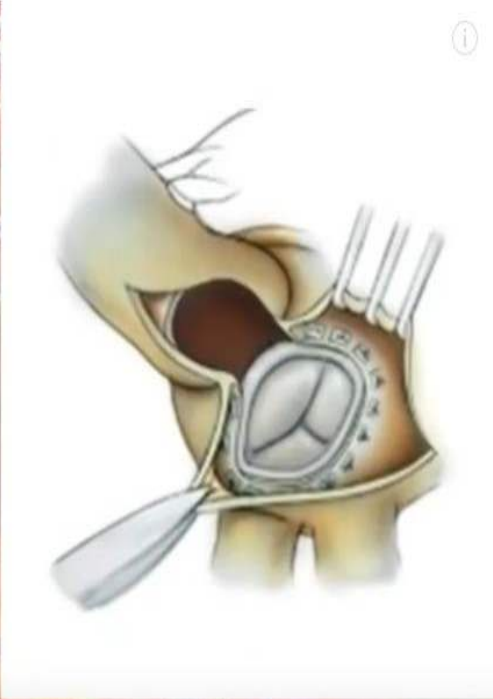
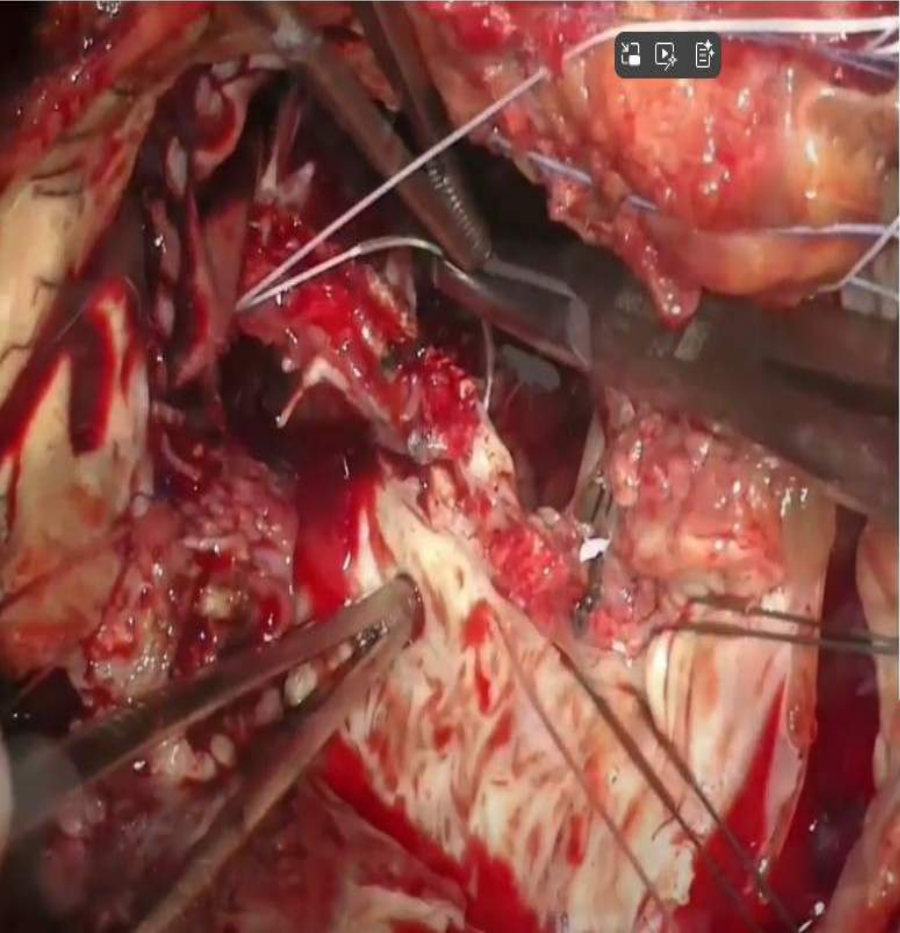
# AORTIC VALVE EXCISED



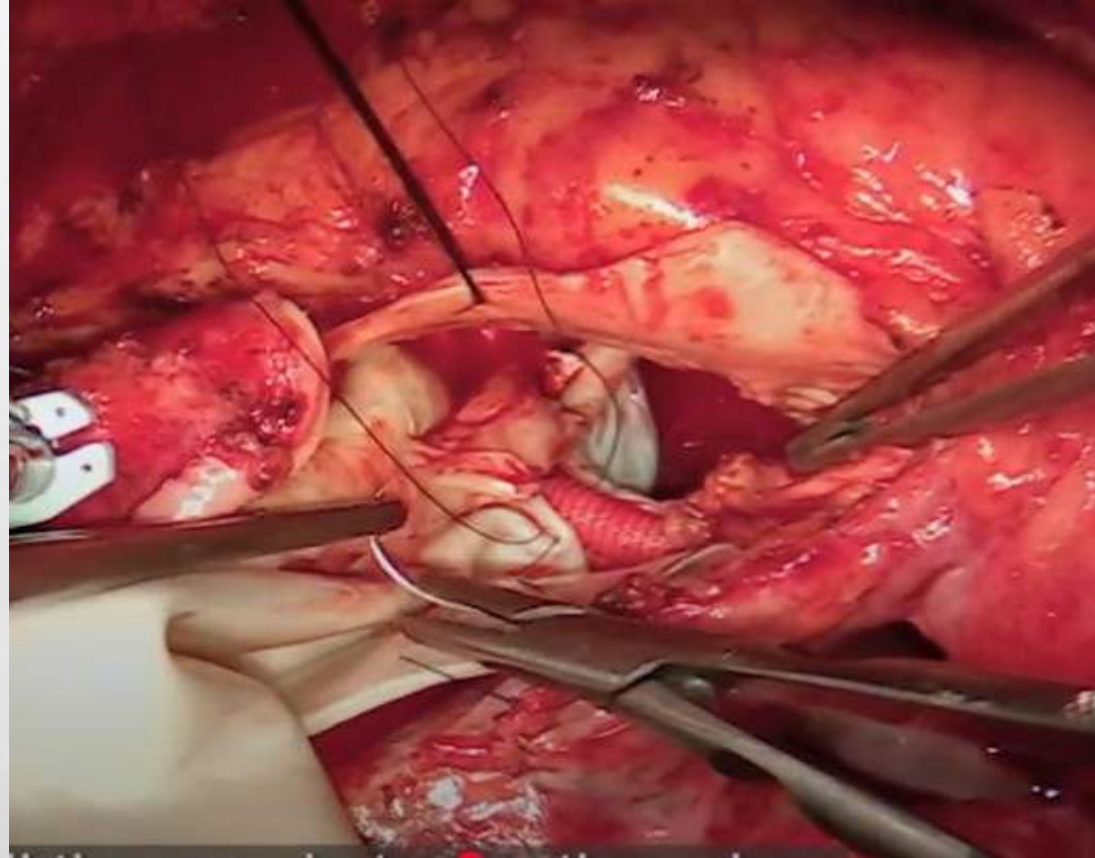
# TAVM AND ASD CLOSURE



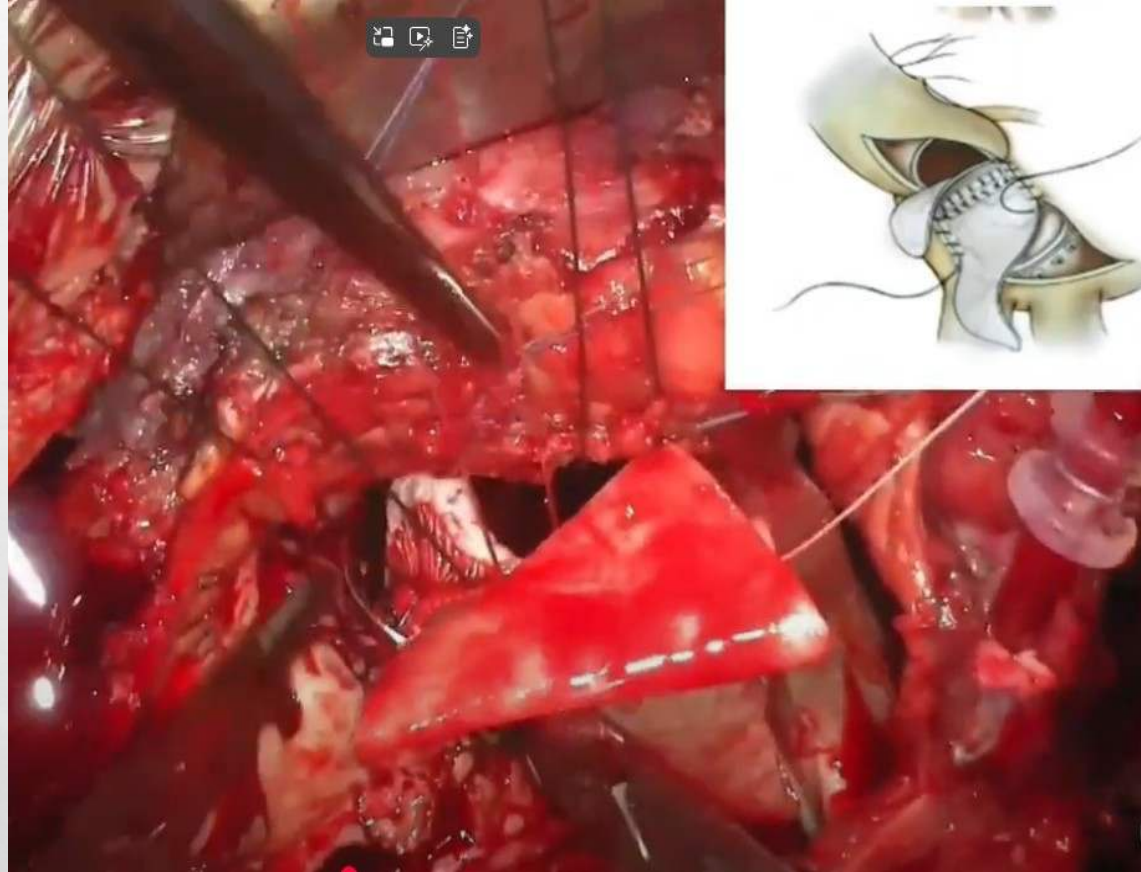
# MITRAL VALVE PARTIAL PLACEMENT



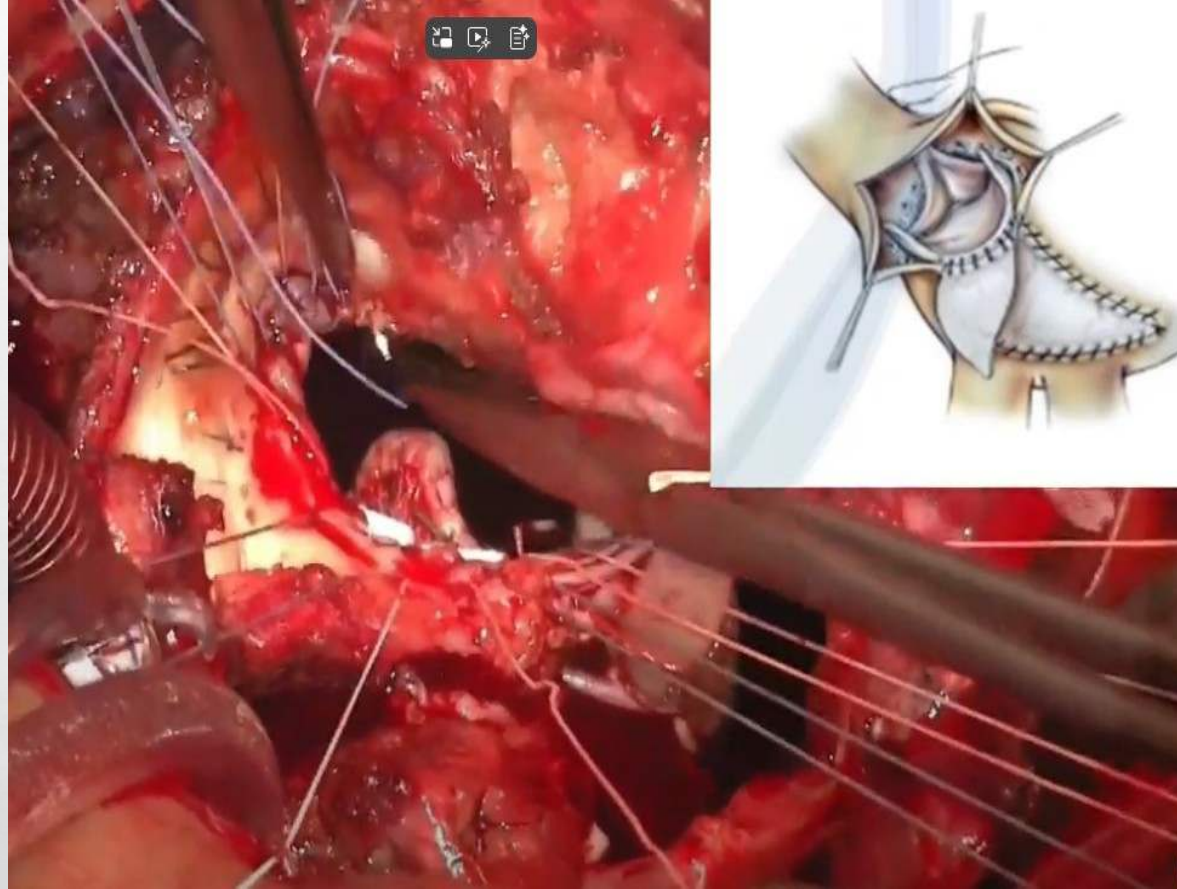
# DIAMOND PATCH PLACEMENT



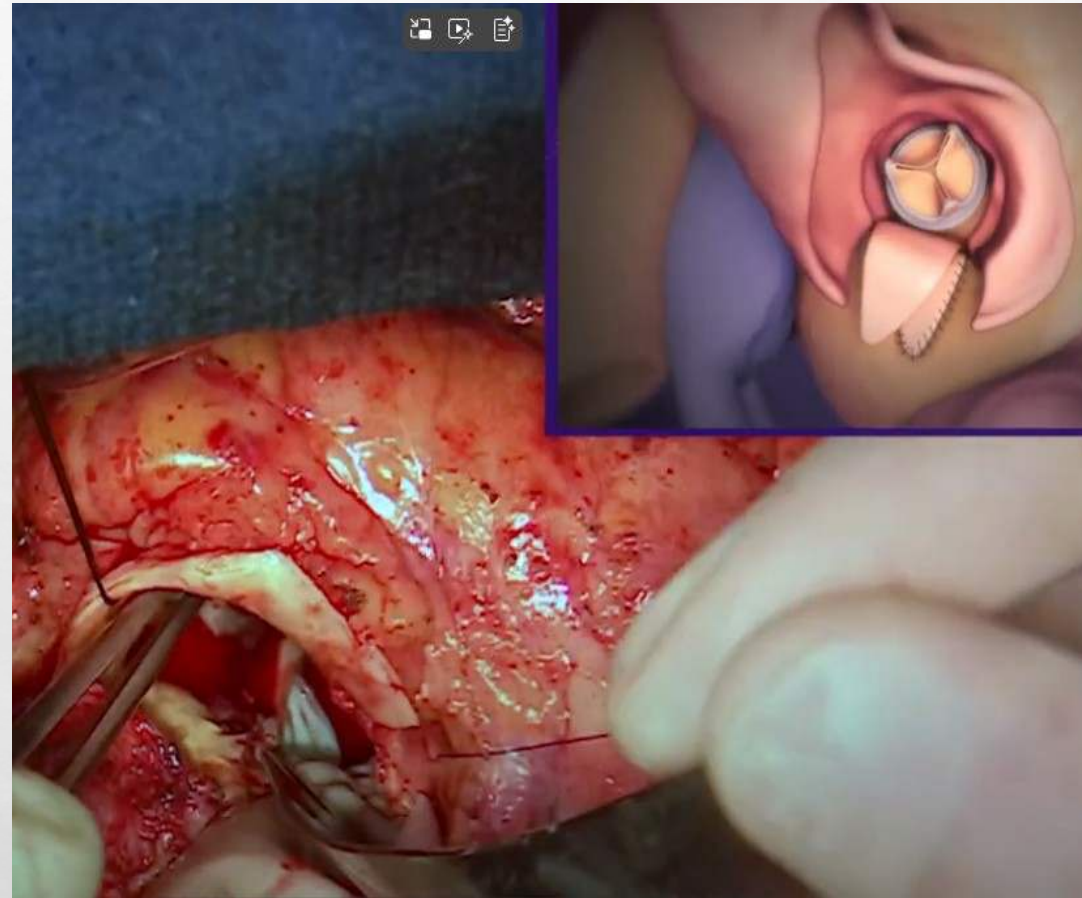
# LEFT ATRIAL ROOF CLOSURE



# AORTIC VALVE SUTURES



# SECOND DIAMOND AORTOPLASTY



# FINAL CONCEPT



# POST OP MAP

