



M Northwestern Medicine[®]
Feinberg School of Medicine

Distal reinterventions after type A aortic dissection repair

Chris Mehta, MD

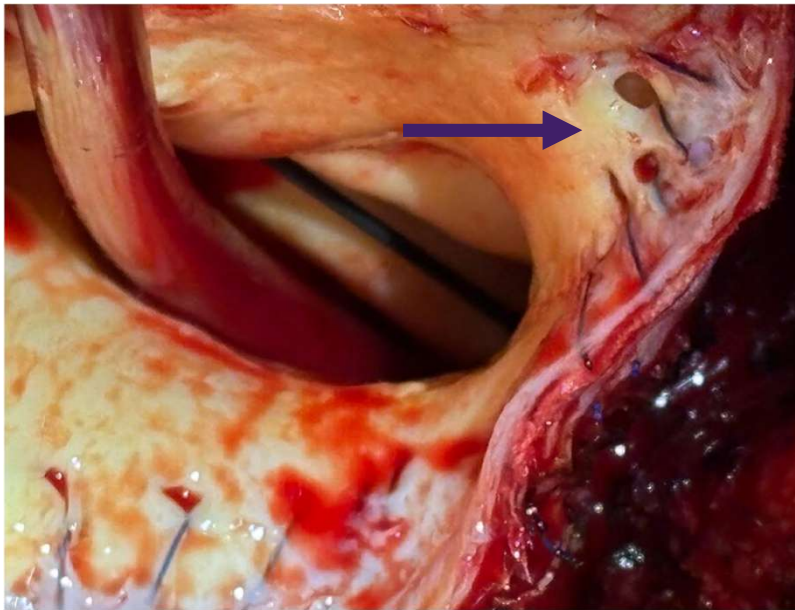
Assistant Professor
Division of Cardiac Surgery
Northwestern Medicine

Disclosures

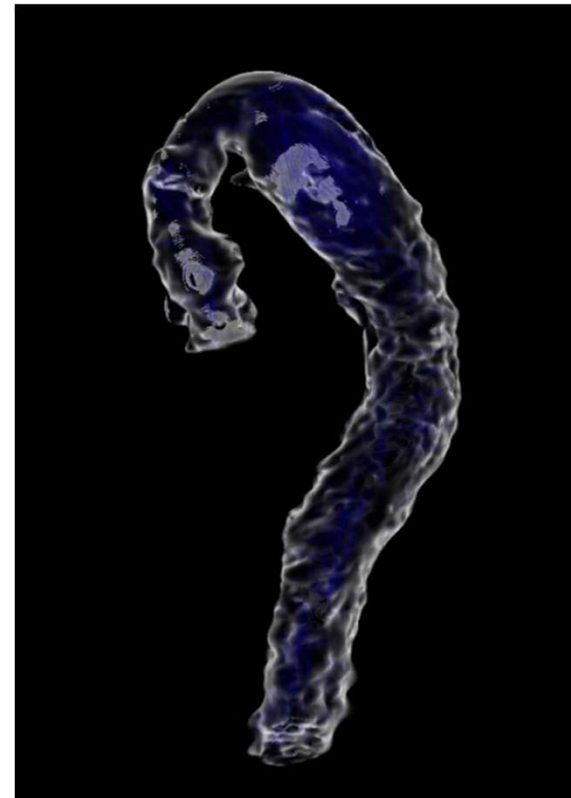
W.L. Gore & Associates – consultant, speaker, educational grant

Terumo Aortic – consultant

Reinterventions driven by aneurysmal degeneration of downstream aorta



**Distal anastomotic new entry (DANE)
is *common* after hemiarch repair**

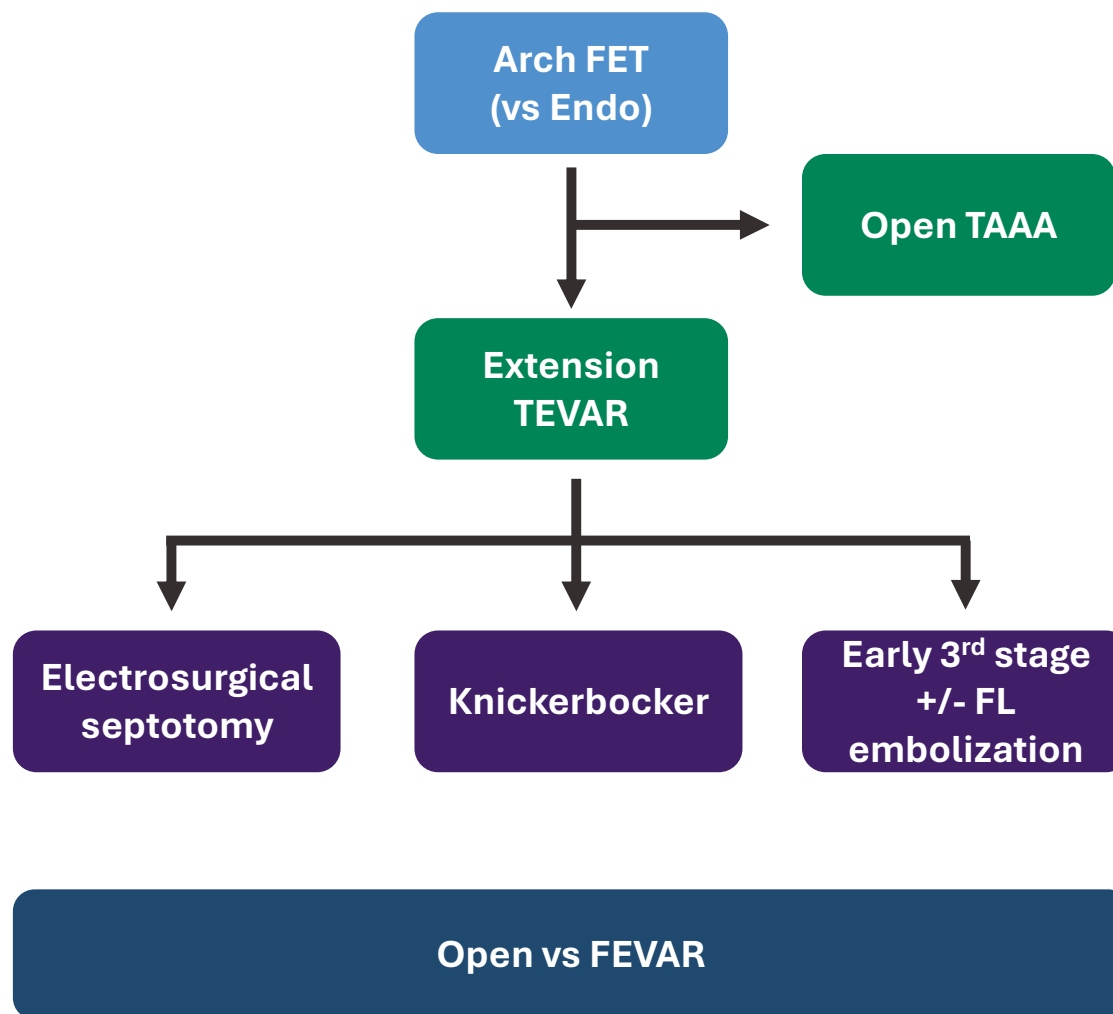


First stage
reintervention

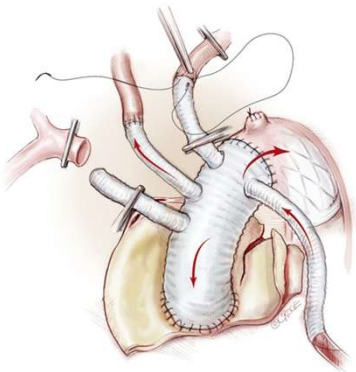
Second stage
reintervention

Landing zone
optimization

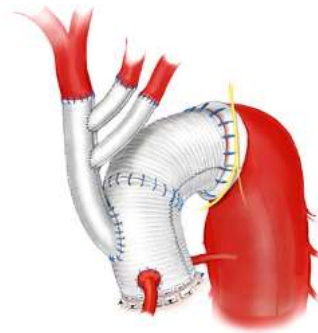
Third stage
reintervention



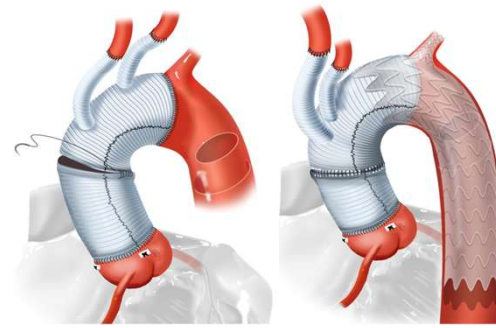
Variations in arch reconstruction



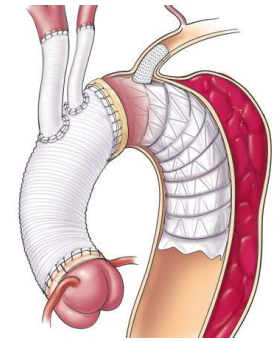
Arch FET



Branch-first



Zone 2 arch (\pm TBE)



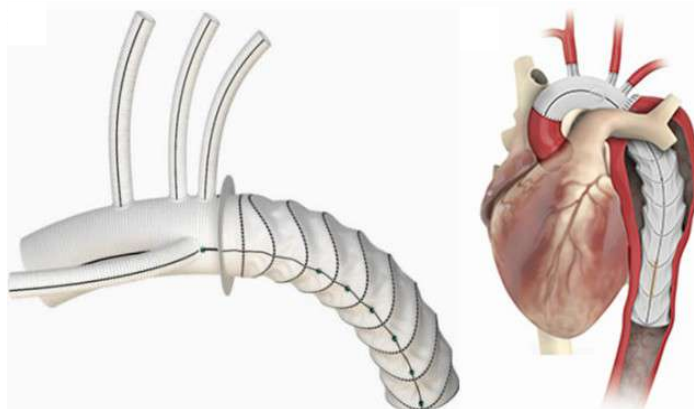
B-SAFER

FET is an excellent platform for both open and endovascular second stage procedures

Total arch replacement with frozen elephant trunk



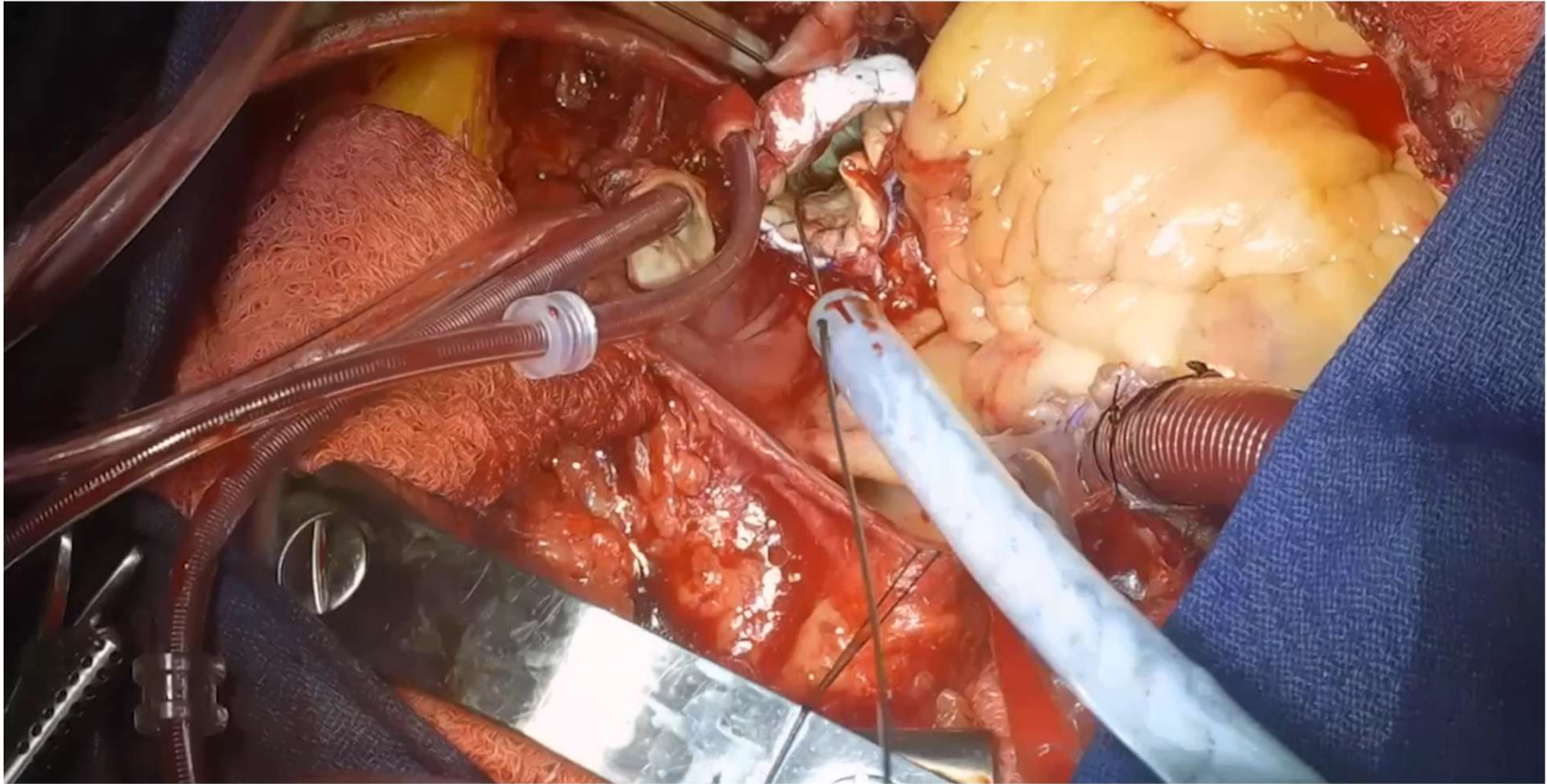
**Antegrade TEVAR
+ arch graft**



Thoraflex hybrid



Evita Open Neo



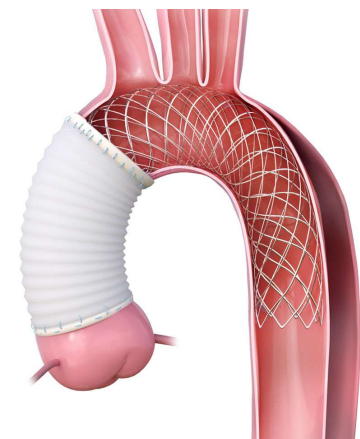
Novel technologies for arch reconstruction



Terumo Rapid Link



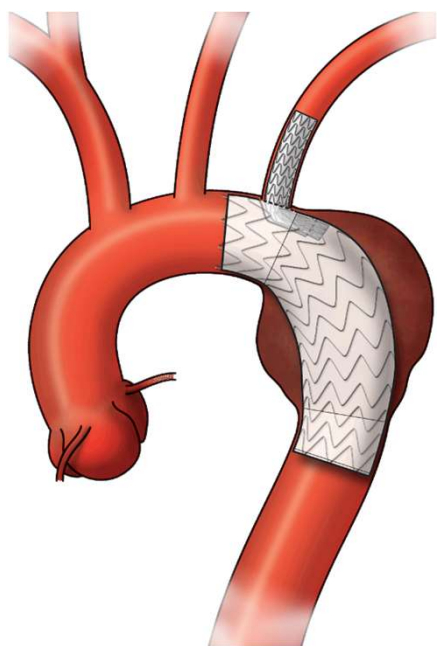
Artivion Arcevo LSA



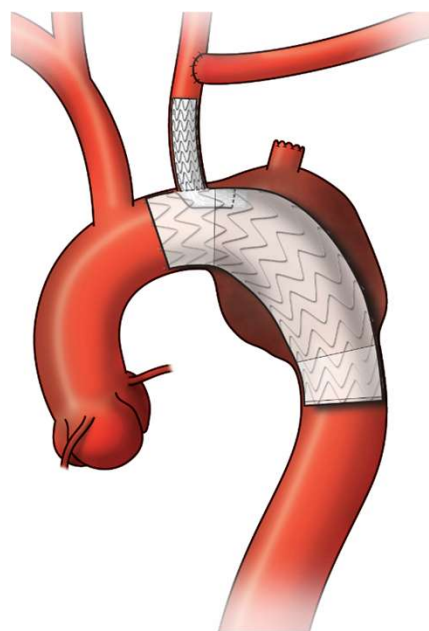
Artivion AMDS

Thoracic branched endografts facilitate endovascular arch repair

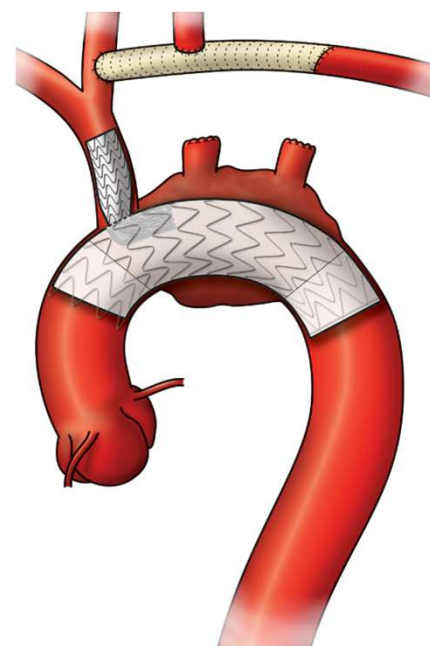
Zone 2



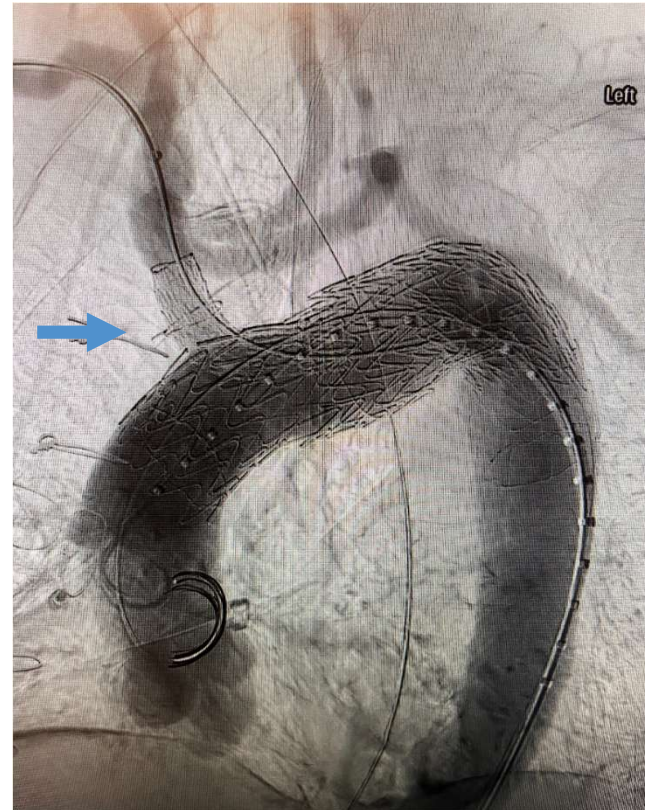
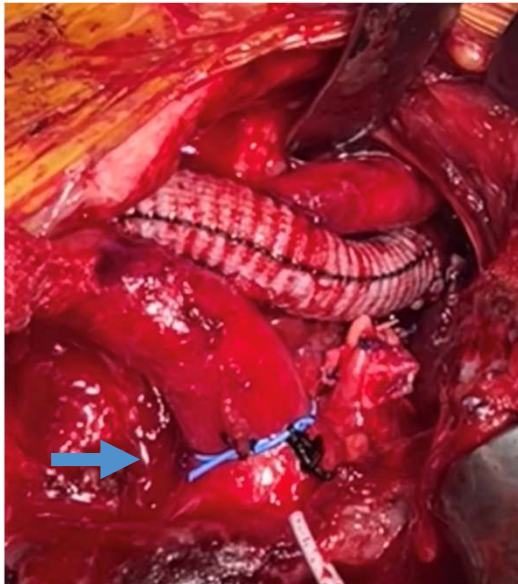
Zone 1



Zone 0



Debranching and zone 0 TBE

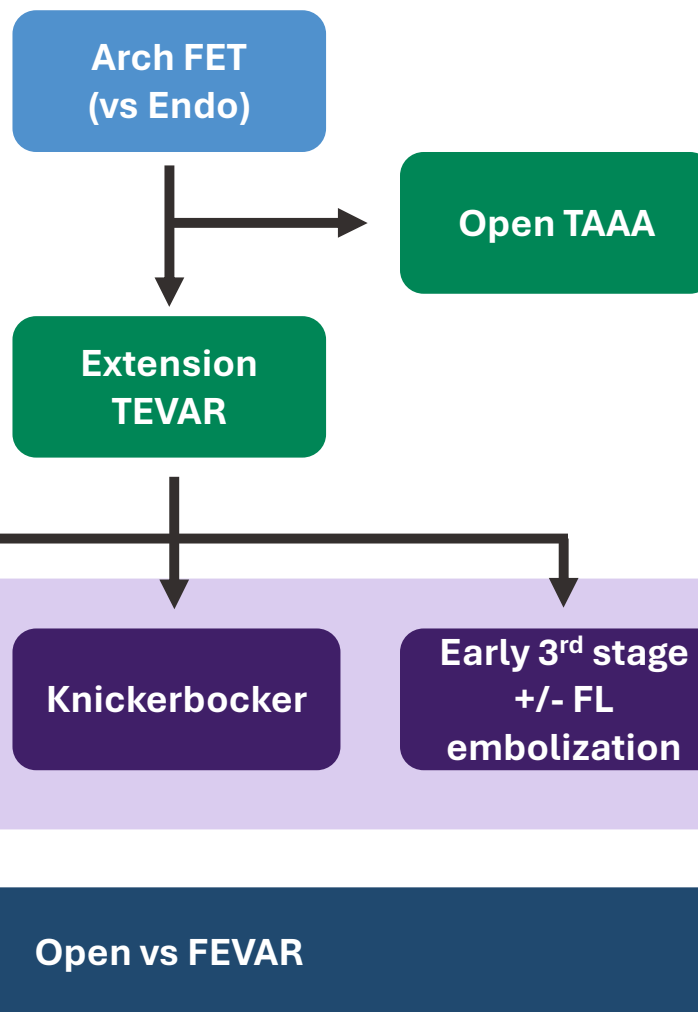


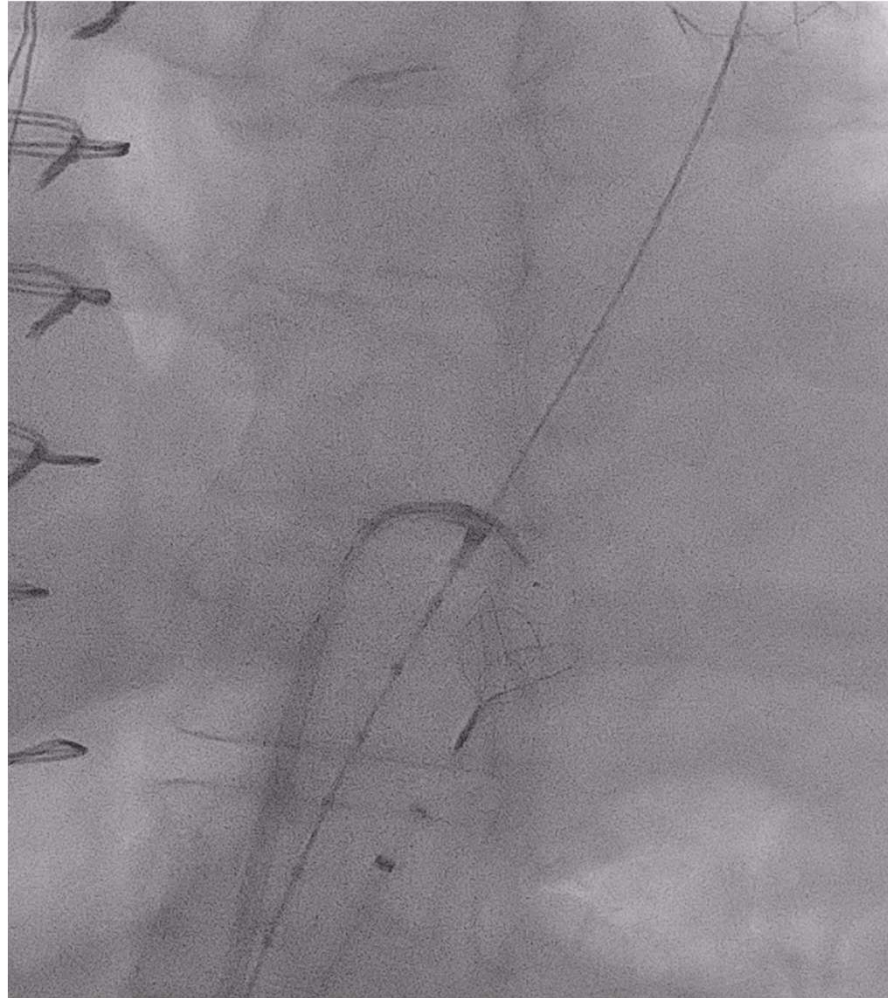
First stage
reintervention

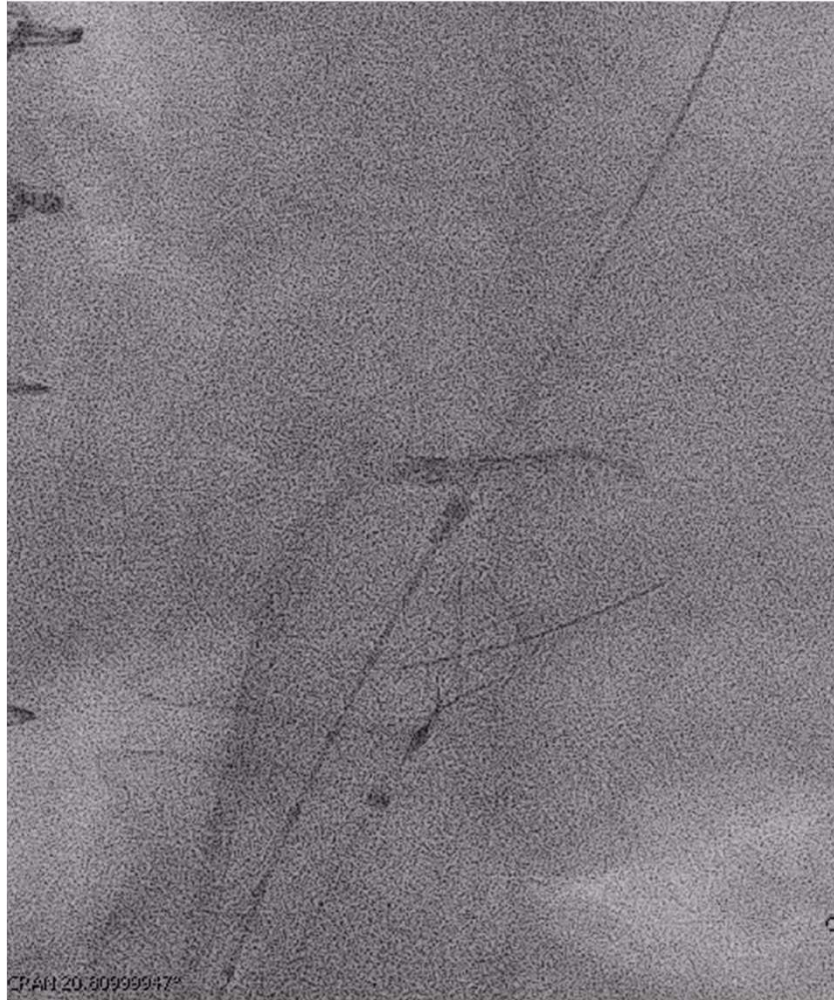
Second stage
reintervention

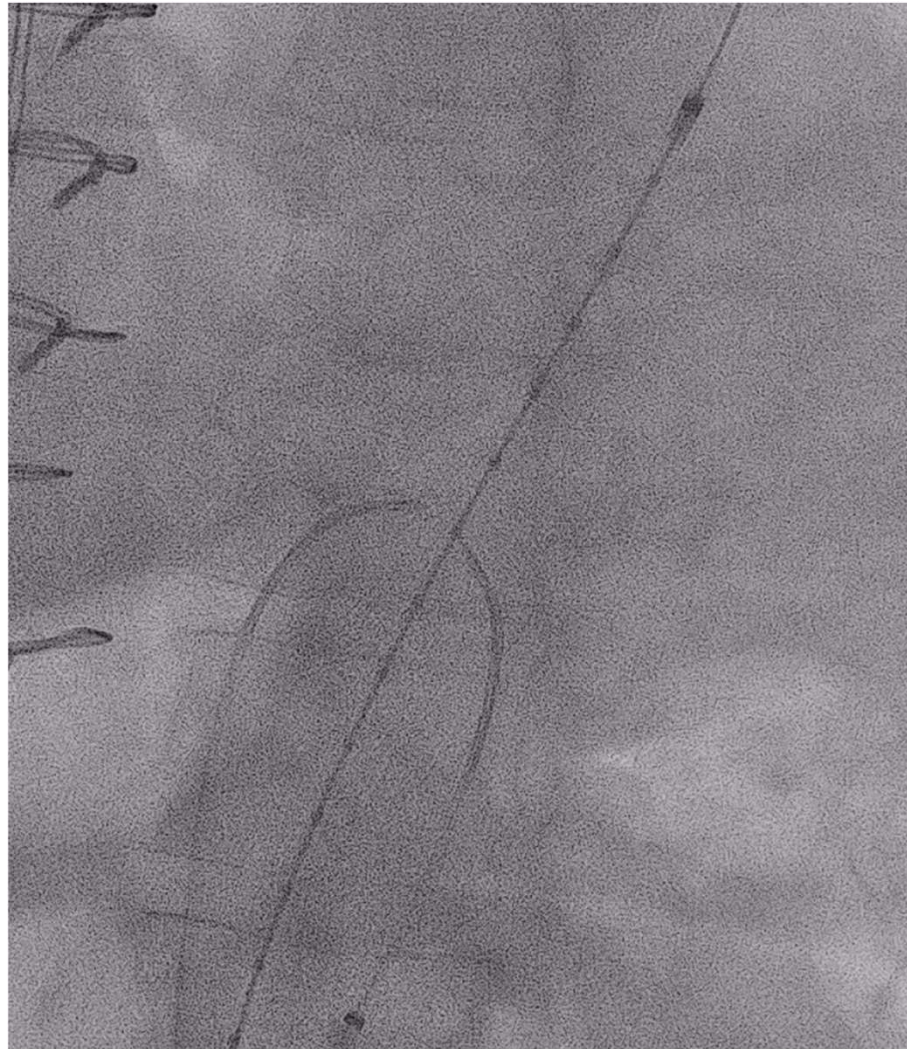
Landing zone
optimization

Third stage
reintervention

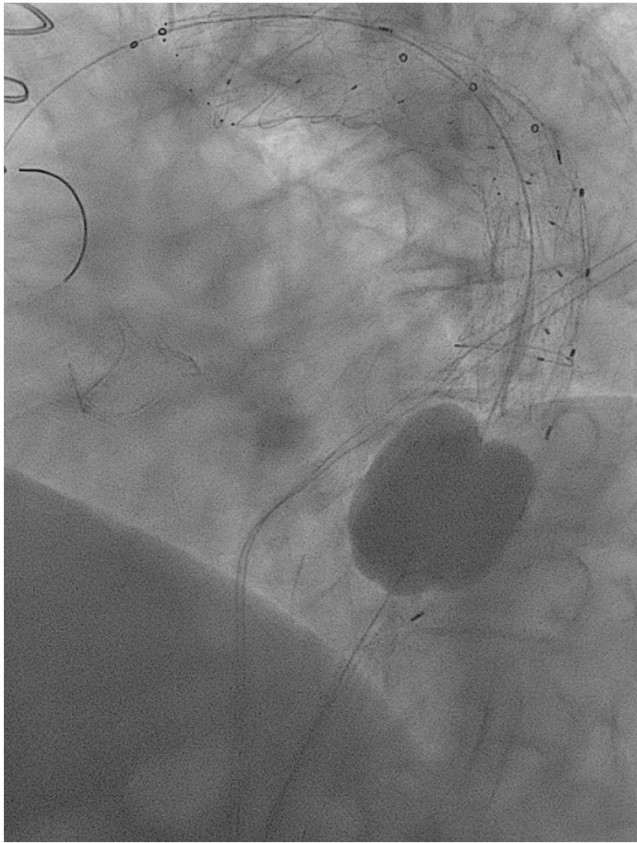




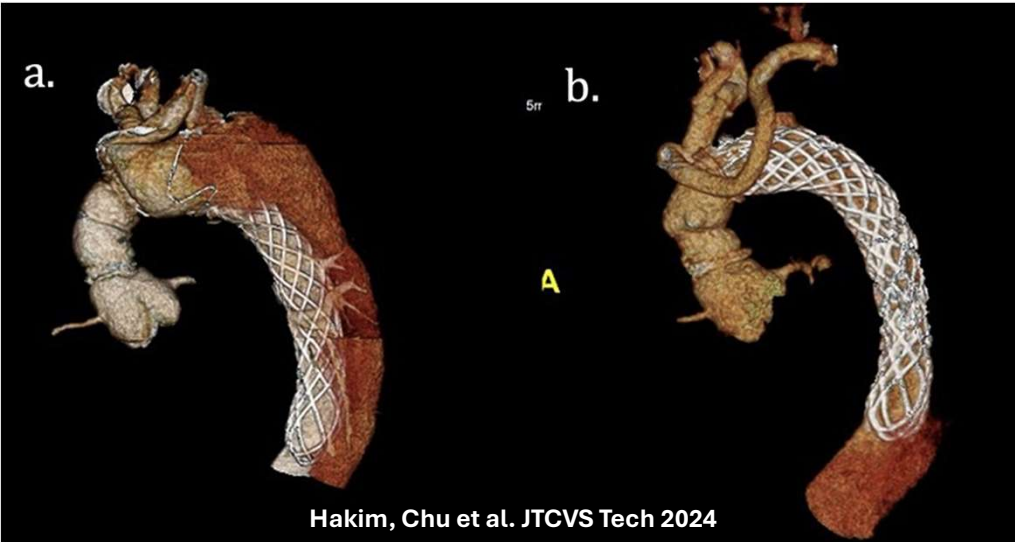




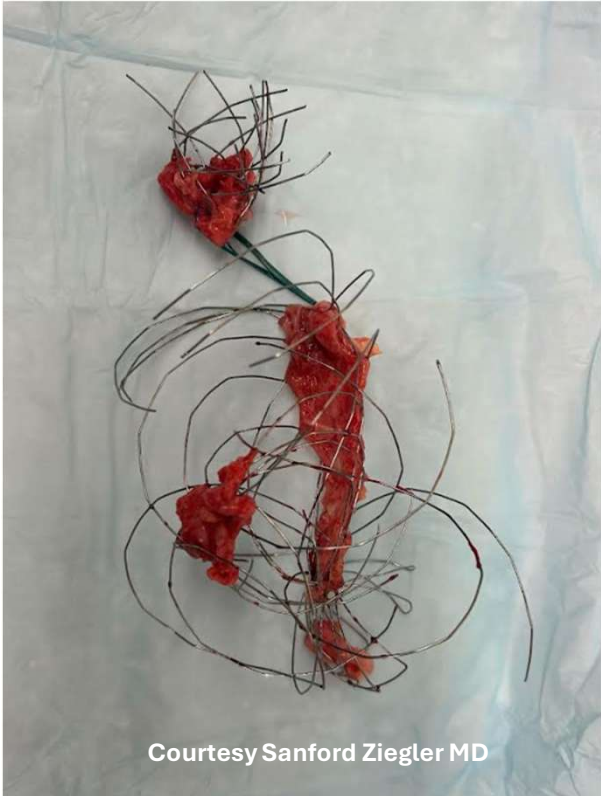




Reinterventions after AMDS



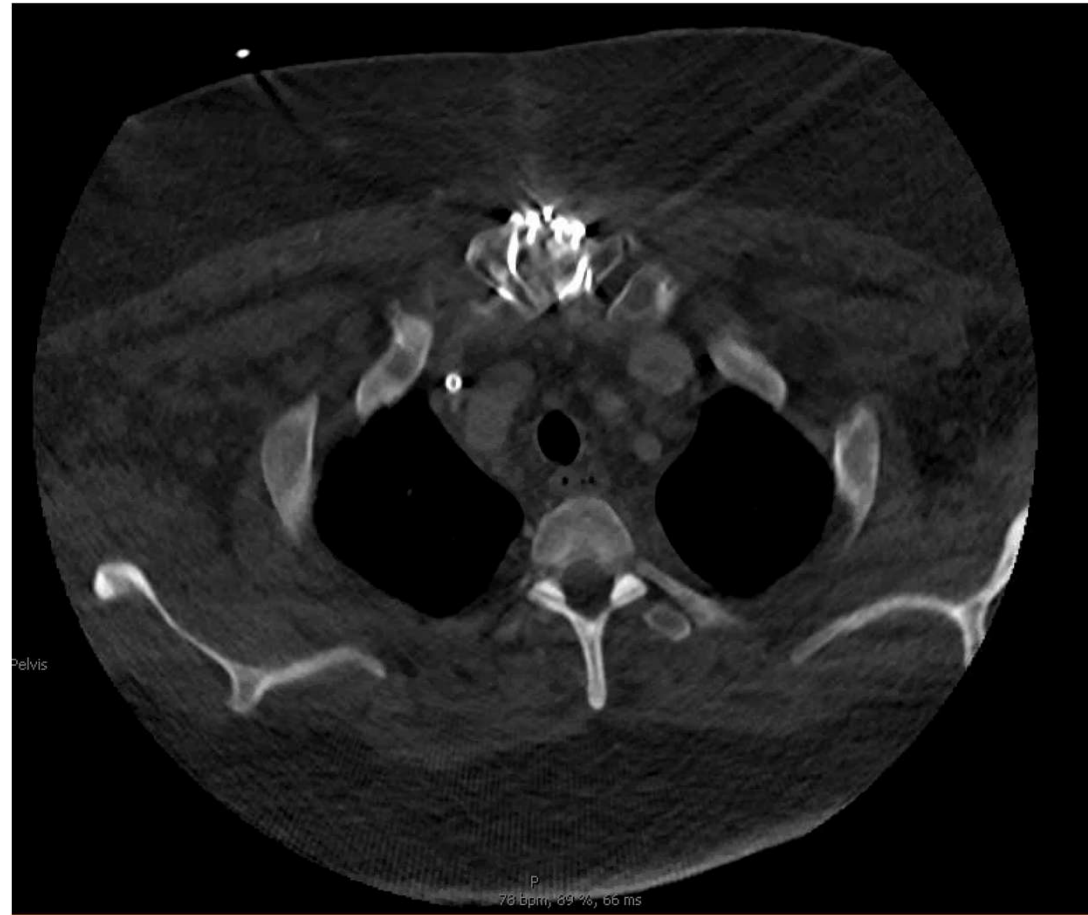
Zone 0 arch FET

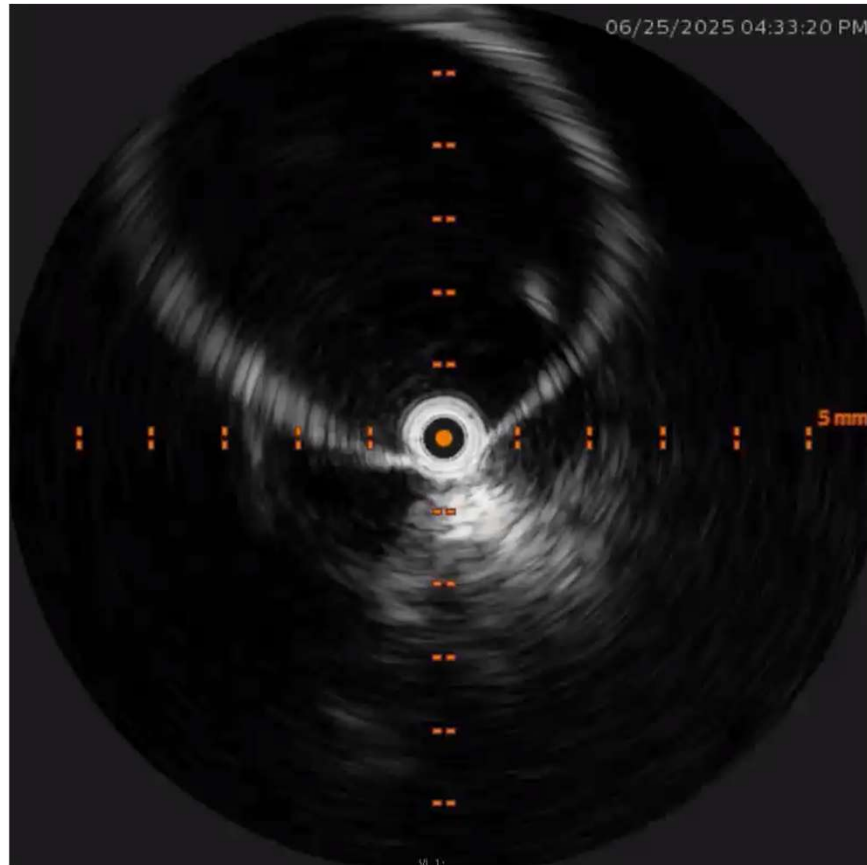


Zone 2 AMDS?

39 yo man with root/arch with debranched innominate/carotid + zone 2 AMDS

Chest pain and rapid growth of proximal descending 4 mos later (~5.2 cm)







Thank you

 **Northwestern Medicine**[®]
Feinberg School of Medicine