



Angle Newsletter

Published by the Edward H. Angle Society
of Orthodontists, Inc., The E.H. Angle
Education and Research Foundation, Inc.

Volume 24, No. 2

ISSN 1098-1624

Winter 2015

PRESIDENT'S MESSAGE – FALL 2014

Hello Angle Members. I hope you all had a great summer and are getting off to a good start to the fall season.

Recently we held our "mid" Biennial Board of Directors phone conference. Steve Lindauer began by giving us an update on the Angle Journal. We are still receiving a significant number of articles for evaluation and, as a result, are able to select very top quality articles for each journal issue. Our website continues to experience a significant number of hits each month, so the Angle Journal continues to be one of the most popular orthodontic journals. It is a great educational gift that our Society provides for our specialty. A special thanks to Steve Lindauer, Bob & Delores Isaacson, and all those involved in producing the journal!

Our Angle Heritage Campaign is moving along slowly but steadily, and we are at about the \$1.5 million mark in pledges at this time. These funds will help maintain the future success of the journal. Our promotional add for contributions on the website is helping, and there were some suggestions to modify its location slightly to attract more attention.

Also discussed during the BOD conference call, was our declining membership. It was pointed out that we have significantly more Senior Retired members than we do Affiliate members. This is a concern to the Board and should be a concern to all of our Angle members. As was discussed in the fall 2013 newsletter, we need new members to uphold the quality of our Component and Biennial meetings, support the Angle Journal and to assure the survival of our organization. To accomplish this, I encourage each of you to invite an orthodontist in your region to attend your local Component meeting as your guest. They will then see the many benefits of membership for themselves: our unique study club atmosphere, mentoring process, top speakers, etc. Each Component's membership process is designed to help encourage and assist new members to fulfill the necessary requirements and in the process provide appropriate checks and balances to assure the quality of member-



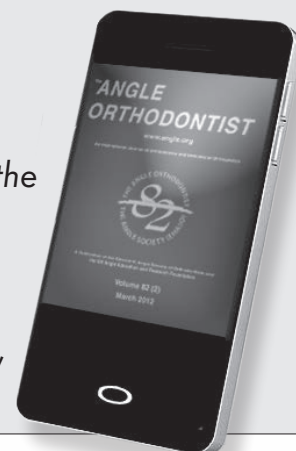
ship. Therefore, I encourage you to reach out to another colleague and help our wonderful Society to thrive for years to come!

Our Southern California Component is working hard in preparation for the Biennial meeting next year in Pasadena, California. The dates for the meeting are September 25-29, 2015. The meeting will proceed much like previous Biennial meetings by highlighting two speakers from each Component followed by discussants and group discussion. Special events will include our welcome reception, our large breakfast meeting with a guest speaker, a special Saturday night event (hopefully at Warner Brothers Studio), a free afternoon on Sunday with the option of visiting the Huntington Library or playing golf, and a Gala Monday night dinner at the Langham Hotel. Overall, the Langham is a beautiful hotel in Pasadena and there are numerous wonderful museums, theater events, sporting events and big attractions in the Los Angeles area for everyone to enjoy. We hope that you will mark your calendars and join us for this special Biennial event! ■

The Angle Orthodontist is now available on your smartphone or tablet.

Go to **www.angle.org** to download it and enjoy the benefits of open access to the Angle Orthodontist from your mobile device.

Open Access for Everyone,
Everywhere, for Ever!





Edward H. Angle

Edward H. Angle Society of Orthodontists, Inc.

Board of Directors 2013–2015

Richard P. McLaughlin,	President	Director	Angle Southern California
Valmy P. Kulbersh,	Vice President	Director	Angle Midwest
Bhavna Shroff,	Secretary		
Phillip M. Campbell,	Treasurer	Director	EH Angle Education and Research Foundation, Inc.
Ronald L. Champion		Director	Angle Northern California
Valmy P. Kulbersh		Director	Angle Midwest
Peter M. Greco		Director	Angle East
Tucker Haltom		Director	Angle Southwest
R. Scott Conley		Director	Angle North Atlantic
Bryan Hicks		Director	Angle Northwest
Steven J. Lindauer (ex officio)	Editor, <i>The Angle Orthodontist</i>		
Robert J. Isaacson (ex officio)	Editor in Chief Emeritus, <i>The Angle Orthodontist</i>		
Blaine S. Clements (ex officio)	Secretary Emeritus		
Sheldon Peck	Secretary Emeritus and Historian		

The Angle Newsletter welcomes contributions of interest to Angle Society Members. Items should be related to events, activities, or people involved in the Edward H. Angle Society of Orthodontists. Address correspondence about the Newsletter to: Dr. Bhavna Shroff, VCU School of Dentistry, Department of Orthodontics, 520 N. 12th Street, Box 980566, Richmond, VA 23298-0566. (804) 828-9326, phone; (804) 828 5789, fax; bshroff@vcu.edu.



Dr. Bhavna Shroff

Your Angle Society Membership Dues

Angle Society dues are billed separately for your EHASO and Component memberships.

Your EHASO dues are sent directly to the Central Office in Lawrence Kansas and include payment for your mandatory *Angle Orthodontist* journal subscription. The EHASO office sends you a bill for this payment in the Fall of each year. Questions regarding EHASO dues can be directed to Rachel Schwien, 810 E. 10th Street, Lawrence, KS 66044. (785) 865-9215, phone; angle@allenpress.com, email.

Component dues are separate and are billed individually by each Component's office. The amount of dues charged by each component is determined within each Component. These dues and questions about them should be sent to your Component's treasurer.

ANGLE HERITAGE CAMPAIGN UPDATE SEPT 2014:

Component & AHC Chairpersons:	Pledges:	Donations:	Total # Pledges/ Paid/Not Paid	% of Paid Pledges
East – L. Peck	\$333,050.00	\$311,885.95	69/58/11	84%
Midwest – J. Hicken	\$ 72,315.00	\$ 70,415.00	45/43/2	96%
No. Atlantic – B. Haskell	\$208,237.29	\$197,797.29	70/62/8	89%
No. Calif – R. Champion	\$184,880.00	\$135,692.00	34/26/8	76%
No. West – M. Wainwright, C. Matthews, J. Moore	\$167,556.56	\$156,906.56	46/41/5	89%
So. Calif – H. Dougherty, N. Sorenson	\$222,926.72	\$179,896.72	50/38/12	76%
So. West – R. Orr, C. Alexander	\$143,700.00	\$126,561.00	38/30/8	79%
Supporters:	\$190,625.00	\$164,625.00	57/55/2	96%
Corporate:	\$7,100.00	\$ 7,100.00	4/4/0	100%
Totals:	\$1,530,390.57	\$1,350,879.52	413/357/56	87%

Please continue to send pledges and donations to Dr. Phillip Campbell at E.H. Angle Education and Research Foundation, Dept. of Orthodontics, Baylor College of Dentistry, 3302 Gaston Ave., Dallas, TX 75246. Donations can also be made online at www.angle.org.

Angle Orthodontist Gift Subscriptions

Angle members automatically receive *The Angle Orthodontist*. But many other clinicians seldom see our journal. If you have a friend or a study club member who falls in this category, why not consider giving him or her a gift subscription to *The Angle Orthodontist*? Your action will benefit your friend, and will help support one of the finest journals in Dentistry! A one-year subscription in the USA is just \$365, and a two-year subscription is \$675. Rates are slightly higher for subscribers outside the US and for institutions.

To give a gift subscription, write to: *The Angle Orthodontist*
Subscriptions
PO Box 7065
Lawrence, KS, 66044-7065

Phone: (785) 843-1234 x297
Fax: (785) 843-1274
E-mail: angle@allenpress.com

COMPONENT NEWS

ANGLE MIDWEST

www.anglemidwest.org

2014 Fall News

Officers

President	Steve Marshall
President-elect	Roberto Lima
Vice-President	Gary Wolf
Secretary-Treasurer	Ronald Jacobson
Admission Committee Chair	Chip Rigsbee (2017)
Study Committee Chair	Jim Hartsfield (2016)
Component Representative	Valmy Kulbersh (2017)
Admissions Committee	Brad Pearson (2021)
Admissions Secretary	Mike Frazier (2019)
Study Committee	Pam Hanson (2021)
Past President	Randy Wright

Affiliates

5th Year	1
4th Year	5
3rd Year	5
2nd Year	7
Total	101

Candidates	9
Honorary Guest	1

2015 Annual Meeting

The Naples Beach Hotel and Golf Club, will be the venue for the 2015 meeting. The meeting will be held January 23rd - 28th. The program chair for this meeting is Libby Graham.

Dr. Graham is preparing an excellent scientific program and social events for this meeting.

2017 Angle Biennial Meeting

The 2017 Angle Biennial Meeting will be held in Chicago, Ill. on September 6th-10th at the Drake Hotel. The Drake Hotel has been newly renovated and will offer a venue of history and camaraderie for all attendees.

Please mark the dates in your calendars!! The General Chair, Ron Snyder; Scientific Chair, Steve Marshall and Local arrangements Chair, Robyn Silberstein are planning a one of a kind program to celebrate the influence of Anna Angle in the EHASO existence.

Members

Senior Active	4
Senior Retired	39
Active	52
Active At-Large	6



Michael Williams receiving his EHASO membership recognition from Kevin Holman

Membership News

The following Candidates were elected First Year Affiliate members:

1. Ildeu Andrade
2. Sergey Berenshteyn
3. Jose Antonio Bosio
4. Dauro Douglas Oliveira
5. Brandon Owen
6. Rodrigo Viecilli
7. Jing Zing

First Year (formerly Prospective) Affiliates were elected Second Year Affiliate members:

1. Matt Ames
2. Flavia Artese
3. Thomas Bradley
4. Nicole Eberle
5. Drew Fallis
6. Lana Helms
7. Yasuko Inoue

The Second Year Affiliates were elected Third Year Affiliate members:

1. Riyadh Al-Qawasmi
2. Bridget Bushon-Miller
3. Toshiaki Hiro
4. Thomas Kluemper
5. Raul Morales
6. Raymond Tsou

The Third Year Affiliate advanced to the status of the Fourth Year Affiliate member:

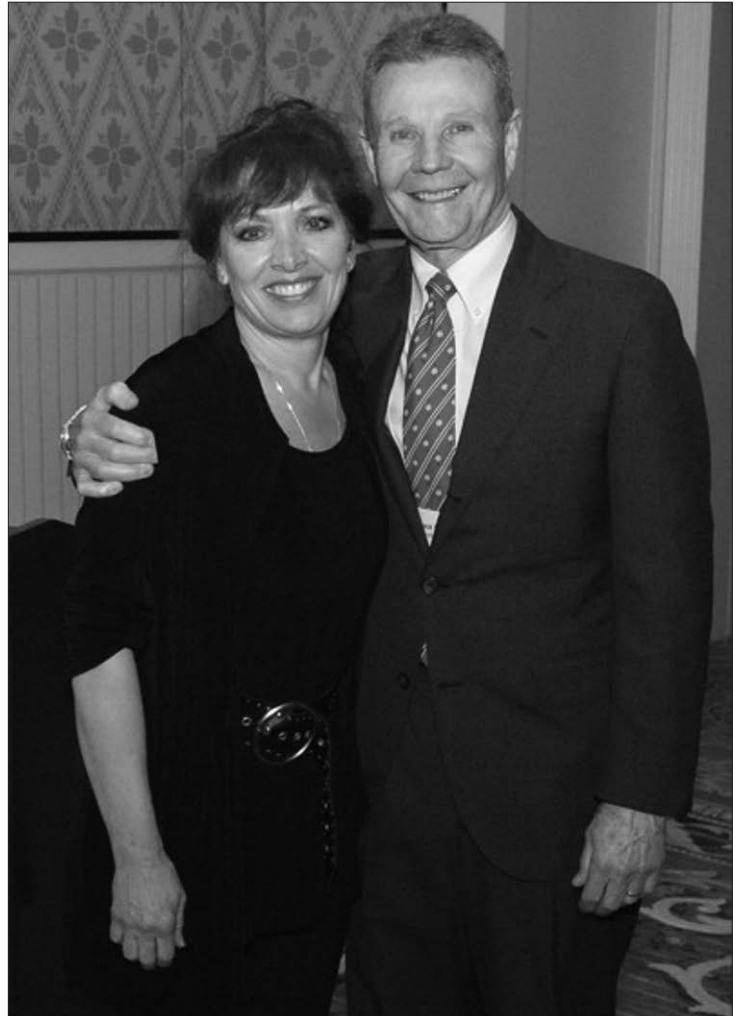
1. Spencer Pope

All Fourth Year Affiliates were advanced to the status of Fifth year Affiliate members:

1. Chris Chang
2. Myung-Rip Kim
3. Maryann Kriger
4. G.P. Schmidtke

The following Affiliate members were elected members of the Midwest component of the Angle society:

1. Toru Deguchi
2. Jack King



Pam Hanson and Jack King celebrating Jack's admission into the Angle Society.



G.P. Schmidtke reviewing cases at the case display room.



Jim and Charlene McNamara, Robyn Silberstein, Regina and Sheldon Rosenstein, Jim and Terrie Greer, Rusty and Barbara Long, Valerie and David Sarver enjoying the group during dinner.

Congratulations to the Affiliate members for advancing in their membership status and category in the Angle Midwest.

The Chair of the admissions committee recognized all members of the committee and guest examiners for their tireless efforts during this meeting. Again, a special note of appreciation to all of the guest examiners: Drs. Marissa Keesler, Tim Trulove, and Roberto Lima. Special thanks to Dr. Mike Frazier for his service to the committee as secretary. Dr. Glen Cowan has completed his

eight year term on the Admissions Committee. The Chair would also like to cite Glen for all of his efforts made on behalf of the committee and membership during those many years.

Heritage Campaign

The Angle Midwest increased their contribution to the Heritage Campaign from \$50.00 to \$200.00 in honor of their deceased members. ■

Contributions of Interest

The Angle Newsletter welcomes contributions of interest to Angle Society Members. Items should be related to events, activities, or people involved in the Edward H. Angle Society of Orthodontists. Address correspondence about the Newsletter to: Dr. Bhavna Shroff, VCU School of Dentistry, Department of Orthodontics, 520 N. 12th Street, Box 980566, Richmond, VA 23298-0566. (804) 828-9326, phone; (804) 828 5789, fax; bshroff@vcu.edu.

ANGLE NORTH ATLANTIC

www.anglenorthatlantic.org

Officers

President	Harry Legan
Vice President	E. Dianne Rekow
Secretary	Michael Spoon
Treasurer	Steven J. Lindauer
Program Director	Ronald Bellohusen
Editor	T. Scott Jenkins
Director to the Central Body	Scott Conley
Past President	Len Rothenberg

Future Meetings

2015 – 51st Annual Meeting, March 25-28, Omni Nashville Hotel, Nashville, TN

Our president, Harry Legan, has arranged our upcoming meeting to be held in Nashville aka The Music City, TN at the Omni hotel. The Omni is connected directly to the Country Music Hall of Fame and Museum. Additional Nashville museums include the Cheekwood Botanical gardens and art museum, Lane motor museum and Parthenon (a full sized accurate replica of the original) Nashville also boasts that it has more than 120 live music venues offering an array of pop, rock, country, gospel, bluegrass, jazz, classical, contemporary Christian, blues and soul. It also has an emerging culinary scene recognized by no less than the cooking channel, southern living magazine, and the New York Times. Those attending with children will also appreciate the Nashville Zoo.

Members of course are looking forward to the scientific program (courtesy of Ron Bellohusen), the new member presentations, and meeting our invited guests.

Member News

SIDO 2014 was held in Florence Italy this year and played host to component members Ravi Nanda, Junji Sugawara, Flavio Uribe, Letizia Perillo, Stella Chausu, Bhavna Shroff, and T. Scott Jenkins. Dr. David DeFranco and Dr. Birte Melsen from Angle East also participated to SIDO.

Dr. Ahmad Hamdan was promoted Vice Dean for Academic and Administrative Affairs at the Faculty of Dentistry of the University of Jordan and has accepted to serve as one of the assistant editors for the Angle Orthodontist.fall

It is with great sadness that the North Atlantic Component says goodbye to its last founding member, Daniel Subtelny. Dan passed away on September 17 at the age of 92.

Dan was active in the field of Orthodontics for six decades and functioned as a practitioner, researcher and educator. He was still teaching at the time of his passing. Dan served as chairman of the Department of Orthodontics at the University of Rochester for 50 years. A department which he established in 1955. Dan was widely recognized continuously throughout his career by the orthodontic community. He was the only person to receive the four highest awards in the Orthodontic profession, the Milo Hellman (AAO) award for research (1959), the Louise Ada Jarabek (AAO Foundation) Memorial International Orthodontic Teachers and Research Award (1993), Albert H. Ketcham (ABO) Memorial Award (1996), and the James E. Brophy (AAO) Distinguished Service Award (2006). He also received the New York Dental Association's the Jarvie-Burkhart Award, in recognition of the great service rendered to mankind in dentistry at age 89.

Dan also stood out in the area of cleft lip and palate early on in his career, incorporating the team approach at Rochester and introducing craniofacial curriculum to the Orthodontic program. He was president of the American Cleft Palate Association and lectured worldwide on the topic.

Dan served on numerous editorial review boards and published over 70 peer reviewed papers himself as well as several book chapters. His text book titled *Early Orthodontic Treatment*, was published in 2000.

The list of Dan's accolades and accomplishments continues, but just as importantly Dan will also be remembered for his perceptive wit and zest for life. We will certainly all miss him. ■



Drs. Nanda, Shroff, Uribe and Sugawara at the International Breakfast of SIDO in Florence, Italy.



Drs. Chausu, Sugawara, Shroff and Perillo at the International Breakfast of SIDO in Florence Italy.

ANGLE EAST

www.angleeast.org

2014-2015 Officers:

President	Kolman Apt
President-Elect	Carroll-Ann Trotman
Vice President	Daniel Tanguay
Secretary-Treasurer	Kambiz Moin and Anne Todd
Editor	David De Franco
Historian	Sheldon Peck
Director	Peter Greco

Future meetings:

2015, March 26-29 (President Kolman Apt).
Location: Washington, D.C. – The Westin Georgetown

2016, March 24-27, (President Carroll-Ann Trotman).
Location: Boston, MA

News:

President Kolman Apt will have the next Angle East meeting in Washington, D.C. at The Westin Georgetown. The meeting is scheduled at the end of March during the magical cherry blossom time. The cherry blossoms are considered to be at their peak when 70 per cent of the blossoms are open. This meeting is expected to be an outstanding event. The Program Chairperson, and President-Elect, Carroll-Ann Trotman will continue the new presentation format. Past

President Marcel Korn introduced the new format two years ago. He included clinical papers, case presentations and pearls into the program to create harmony between the academic evidence-based presentations and the clinical concepts used in orthodontic practice.

In addition to the Officers of the Executive Committee listed above, Nicholas Barone is Director Emeritus, Hugh Phillis is 3rd



Past President Marcy Korn passing the gavel to President Kolman Apt in Paris, France



Springtime cherry blossoms overlooking the Jefferson Memorial in Washington, D.C.



Michael Vermette and Vice-President Daniel Tanguay at the Le Procopé in Paris, France



Michele Di Battista and Turi Bassarelli enjoying Le Sénat in Paris, France



Kunihiro Otsubo receiving his Angle Certificate from President Marcel Korn at the Restaurant du Sénat in Paris, France



L to R: Slick Vanarsdall, Dolores Dodds, Antonino Secchi and Maria Schellhorn enjoying the evening at the Restaurant du Sénat in Paris, France



L to R: Anthony Gianelly and Giuseppe Cozzani

Past President, William Cole is 2nd Past President, Marcel Korn is 1st Past President, Mark Bronsky is Examining Committee Chair, Peter Ngan is Academic Committee Chair, Ute Schneider-Moser is Membership Committee Chair, Olivier Nicolay is By-Laws Committee Chair, Hugh Phillis is Nominations Committee Chair, Michael Cognata is Awards Committee Chair and Sylvain Chamberland is Communications Chair.

Turi Bassarelli, Kunihiro Otsubo and Antonino Secchi completed the admissions process and gained active member status receiving an Angle Certificate in Paris, France. Other Affiliate

members completed the admissions process in Paris and gained active member status. They will receive the Angle Certificate at our next meeting in Washington, DC.

At our last meeting in Paris, Robert "Slick" Vanarsdall received Angle East's highest recognition, the Harvey Peck Memorial Award for his achievement in the pursuit of excellence in the specialty of orthodontics. Slick continues to show leadership and mentoring skills through a rigorous lecture schedule. In mid-September he returned from Warsaw, Poland. The following week he travelled to Lima, Peru for a two-day course. He will proceed to



L to R: Carlalberta Verna, Mauro Cozzani and Sheldon Peck enjoying the reception following the concert at the Église des Billettes in Paris, France



L to R: David De Franco, Matthew Miner, Marcel Korn and Kam-biz Moin at the reception following the concert at the Église des Billettes in Paris, France



L to R: David Briss, Chair of the Examining Committee, and Margherita Santoro, Chair of the Academic Committee in Paris, France

Anaheim, California for the Pacific Coast Society of Orthodontics where he will deliver the Presidential Lecture and participate in the World Implant Orthodontic Conference joint meeting. He will then be in Williamsburg, Virginia for the Middle Atlantic Society of Orthodontics meeting to discuss "Removing the Age Barriers to

the Use of Palatal Expansion – How the Game Has Changed". He will then be off to courses in Kuwait, Dubai and Jordan. In December Slick will receive the Paul Herren Award from the University of Bern in Switzerland.

The Angle East is saddened to report the death of the Italian orthodontist Giuseppe Cozzani, the father of our Angle East member Mauro Cozzani. Giuseppe died on August 22, 2014 and is survived by his children Mauro, Paolo and Francesca. Giuseppe Cozzani was a longtime dear friend of Angle East member Anthony Gianelly who died in May 2009. Giuseppe made an enormous contribution to Italian Orthodontics. Only to mention a few of his accomplishments, Giuseppe was a founding member of the Angle Society of Europe in 1972. He was president of the Italian Society of Orthodontics in 1994 and co-founder of the World Federation of Orthodontics that same year in San Francisco at the AAO meeting. In November 1995 Giuseppe established the Italian Board of Orthodontics. His enthusiasm, generosity and passion for orthodontics have been passed on to many Italian orthodontists.

The Angle East is always indebted to Elizabeth Barrett for preparing the program booklet. The next annual meeting will take place at The Westin Georgetown in Washington, D.C. from March 27-29, 2015. ■

ANGLE NORTHWEST NEWSLETTER

www.anglenorthwest.com

2014-2015 Officers:

President	Doug Klein
President-Elect and Program Chair	Peter Shapiro
Past President	Iain Allan
Secretary/Treasurer	Hugh Lamont
Admissions Committee	Tim Quinn
Study Committee	Scot Burgess
Component Representative	Bryan Hicks

Future Meetings:

January 21-25, 2015 at the Fairmont Hotel, Seattle, WA.

The Northwest Component of the Angle Society broke from tradition for our winter meeting in February and went to Kona, Hawaii. Although the original thinking might have been to get to a warmer climate at that time of the year, the added benefits of a longer meeting meant that there was more time for social events and more time to add some new features to the program. In the end it was obvious that there was more time spent getting to know some of the newer members and affiliates and also more time to swap lies with long time friends and acquaintances as well.

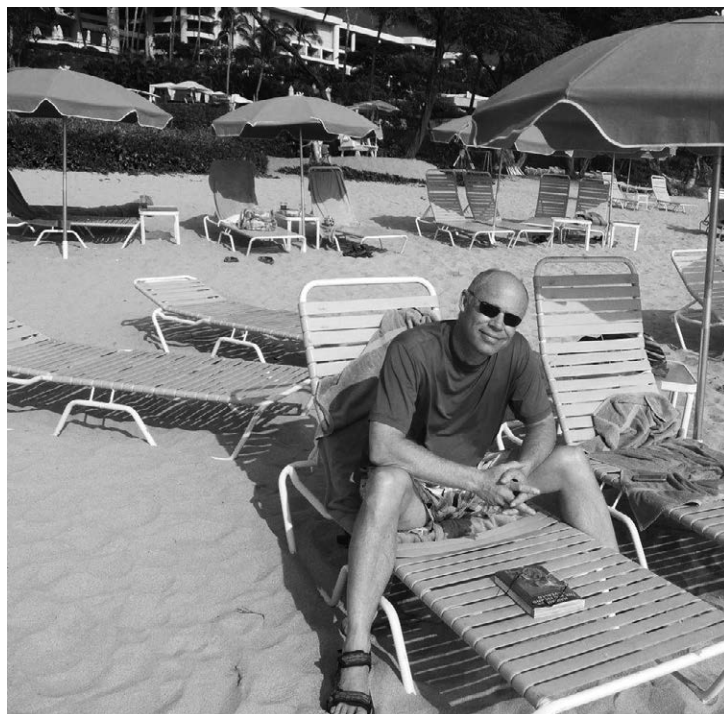
The scientific program featured affiliate case reports by Ryan Moses, Paul Helpard, and Brad Chvatal. Following their presentations, all three were welcomed into regular active membership. Dave Turpin gave us an interesting historical perspective on changes in the AJODO over the years since its inception; Paul Pocock presented an interesting look at distraction osteogenesis in patients with craniofacial anomalies, and David Kennedy presented a 2 part series on planning for the treatment of crowded dentitions: when to extract and when to treat non-extraction.

Our guest speaker featured Dr. Barbara Sheller, an orthodontist from Seattle area who also has an interest in debunking claims in many fields of alternative medicine and alternative therapies. They too must stand the test of evidence-based scrutiny if they are to be believed. It is truly amazing to see what treatments have been tried over the years. It had us all looking closely at the goats next to the golf course to see if they were, in fact, intact.

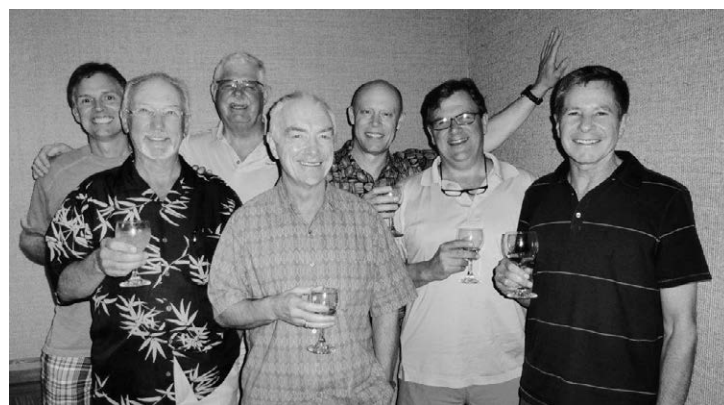
A new feature added to this meeting was the member case display. It functioned well to promote informal discussion among everyone present and will open the doors to making our Northwest component more user friendly for affiliates and new

members so there is a helping-hand study club atmosphere to our group.

The Northwest Component of the Edward H Angle Society is attempting something new this year by having only one longer meeting each year rather than 2 shorter meetings. The rationale for the change is to create a meeting with more time for social events and more time for the organization to function in more of



Incoming President Doug Klein getting in some sun and reading at Hapuna



A typical end to a successful Executive meeting in Hawaii

a “study club” mode whereby more of the members are able to present cases in a table clinic format so that there is more time for members, older and newer, to present and discuss problem cases, or cases of particular interest in a more informal setting than has been the case in the past.

Our next meeting will take place in Seattle at the Fairmont Olympic Hotel. The meeting dates are:

January 21-25, 2015

I feel it is appropriate to highlight the fact that the last name on the list, Bryan Hicks, is replacing Dale Rhoney as our component representative. Dale served us very well and culminated many years as component representative when he became President of the Edward H Angle Society and oversaw the very successful Biennial meeting in Vancouver, BC in September 2013. Bryan is now looking forward to working with the national organization and acting as liaison between the two organizations. I feel it is appropriate at this time to give some background information on Bryan so everyone is better acquainted with the man who will be playing such an active part in, not only the Northwest component, but also the National organization over the coming years.



Ryan Moses being congratulated by Larry Doyle on becoming an active member



Brian Hartman discusses the finer details with Joe Safirstein and Chris Matthews

Bryan is a true West Coaster in that he grew up on the North Shore of Vancouver, BC in West Vancouver. He loved every aspect of growing up in an area with so many diverse activities from which to choose various sports and recreational activities. Bryan's university education started across the Straights in Victoria, BC where he received his Bachelor of Science. Bryan then went to Chicago for his dental degree but decided the west coast was calling, so enrolled at the University of Washington in Seattle for his graduate orthodontic education and Masters Degree which he earned in 1998. He then joined his father, Dr Bob Hicks, in practice in West Vancouver. They practiced together for about 6 months until Bob retired.

Bryan is married to Sandy who is also an orthodontist. She is also a member of the Northwest component of the Edward H Angle Society and as well is an examiner with the Royal College of Dentists of Canada. Bryan and Sandy have three great children; Josh age 9, and Ben and Olivia age 8. As you can imagine, life is very busy with all of the hockey, soccer, and piano lessons that their three children enjoy.

If that isn't enough, Bryan is currently moving into the position of President-elect of the PCSO and has been a delegate to the AAO for the last 5 years. In Bryan's own words, "I am very honoured to be asked to represent the Northwest Component of the Angle Society." I think we can all be grateful that Bryan has found the time and has accepted the post of component representative for the Northwest Component. ■

ANGLE NORTHERN CALIFORNIA

www.anglenortherncalifornia.org**Officers and Directors**

President	Kenneth Kai
President Elect	Greg Wadden
Secretary	Maryse Aubert
Treasurer	Brian Payne
Past President	Doug Jaul
Director to Central Body	Ron Champion

Directors

One Yr Term	Paul Kosrovi
Two Yr Term	Howard Hunt
Three Yr Term	Ann Marie Gorczyca
Four Yr Term	William Green
Five Yr Term	Ib Nielsen
Editor	Ann Marie Gorczyca

Future Meetings

November 20 -22, 2014, The Villagio Inn and Spa,
Yountville, Napa Valley, California

Meeting News

The Northern California Edward H. Angle Orthodontic Society will host a two day away meeting at The Villagio Inn & Spa in Yountville, in the heart of the Napa Valley. The program will emphasize "Clinical Efficiency in Orthodontic Treatment". Guest speakers will be Dr. Bruce Goldstein of Scottsdale, Arizona and Dr. Thomas Shipley of Peoria, Arizona. Dr. Goldstein's presentation will be "Ensuring Success with Suresmile". Dr. Shipley will present "Propel to Increase the Rate of Aligner Progression."

Northern California Angle Society member Dr. Straty Righellis of Oakland, California will present "Accelerating Orthodontic Tooth Movement with Pulsatile Forces- The Science, Clinical Results and Implementation." Member Dr. Heon Jae Cho of Seoul, South Korea will present "Application of 3D Images in Surgical Orthodontics: Precision and Predictability of Orthognathic Surgery." Affiliate member Dr. David Markham of Auburn, California will present a case progress report. The discussor will be Dr. Pete Worth.

There will be a welcome reception on Thursday evening November 20 to welcome all NCAS members, guests, family, and vendors. The meeting will also include a Friday night President's Dinner to honor outgoing NCAS President Dr. Kenneth Kai.



President Dr. Kenneth Kai

Membership News

Northern California Angle Society continues to grow its membership. NorCal EHASO now has 50 active members. We look forward to the progress of 5 Clinical Affiliates: Rebecca Keller, HeeSoo Oh, David Markham, Bella Shen-Garnett, and Andrew Trosien. Orthodontic residents from both the University of California San Francisco and The Arthur A. Dugoni School of Dentistry University of the Pacific are able to attend the November meeting thanks to the generous support of our sponsors.

The Northern California Angle Society will honor President Dr. Kenneth Kai at the NCAS Biennial President's Dinner, Friday evening, November 21, 2014 in the Barrel Room at the Villagio, Yountville, CA in the heart of Napa Valley. Dr. Kai has been instrumental in welcoming new members and creating opportunities for existing members to serve our growing organization. ■

ANGLE SOUTHERN CALIFORNIA

www.anglesocal.org

Officers:

President:	Will Andrews
Vice President:	Gary Kawata
Secretary:	Bob Bergman
Treasurer:	Harry Dougherty, Jr
Arrangements Chairperson:	Alice Shen
By-Laws:	Rob Hambleton
Executive Secretary:	Nile Sorenson
Director Angle So. California:	Rick McLaughlin
International Representative:	Masatada Koga
Editor:	Dave Rynearson
Historian:	Richard Mays
Program Chairperson:	Tina Siu

Future Meeting:

A 2-day meeting will be held March 20-21, 2015 at the Hilton Los Angeles/Universal City. Typically, the 1st day, Friday, all Members and Affiliates will display models, records of 2 of their

best cases treated within the last 2 years. These will be graded by the winners from the year before. The case categories vary somewhat from: 1) most difficult 2) best finish 3) most unusual.

The speaker program for both days will be by "members only" which will include our Affiliates giving oral presentations for membership as well as last years case winners presenting their winning cases. In addition, selected Regular Members will make additional presentations.

Biennial Meeting:

You should know by now that the 41st International Biennial meeting is coming up Sept 25-29, 2015 at the Langham Huntington in Pasadena, California. A 'save the date card' has already been mailed. Reservation materials will be forthcoming after the 1st of the year. The meeting, September 20-29 was planned around a weekend, so that Friday, Monday and half day Tuesday will allow a minimum amount of time out of the office. Be sure to mark the dates now. ■

ANGLE SOUTHWEST

www.anglesouthwest.org

Officers

President	S. Ed Owens
President-Elect/Vice President	Dan Percy
Treasurer	Mittida Raksanaves
Secretary	George Schudy
Director to Central Body	Tucker Haltom
Director-At-Large	Hiro Arimoto
Director	Seuss Kasssieh
Immediate Past President	Joe Pearson

News from the Southwest—Congratulations to:

5 Affiliates who presented papers for Full Membership

Dr. Phil Corbin- Texas

Perspective Study Analyzing the Position of the Lower Incisors in Untreated Cases in Different Sagittal Skeletal Classifications

Dr. Brad Edgren- Colorado

Maxillary Canine Transverse and Angular Changes Due to Rapid Maxillary Expansion In Early Interceptive Treatment Patients Analyzed with Cone-Beam Computed Tomography

Dr. Grant MacColl - Canada

An objective comparison of direct and indirect bonding techniques

Dr. Marko Perkovic - Croatia

What is the Influence of Orthodontic Therapy on the Physical Appearance of Adult Patients and the Effect of Changes on the Mental Status

Dr. Cory Stephens- Texas

Orthodontist perception on long-term extraction versus non-extraction treated patients from a frontal view

MEMORIES FROM A FANTASTIC
ANNUAL MEETING...

JACKSON HOLE, WYOMING
AUGUST 21-24, 2014
SNAKE RIVER LODGE



*Cold and rainy day... perfect day for an indoor meeting!
This meeting was well attended with 31 members and 3 guests.*

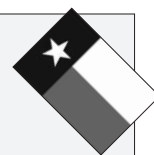


"Welcome Reception"

SAVE THE DATE

PLEASE JOIN US FOR THE 2015 ANNUAL MEETING SOUTHWEST COMPONENT OF THE
EDWARD H. ANGLE SOCIETY OF ORTHODONTISTS, APRIL 16-17-18, 2015

THE MEETING WILL BE AT THE BEAUTIFUL OMNI BARTON CREEK RESORT & SPA, AUSTIN, TEXAS
www.omnihotels.com/hotels/austin-barton-creek



Omni Barton Creek Resort & Spa began with the goal of turning the beauty of 4,000 acres of untamed Texas wilderness into one of the most sought after resort destinations in Texas. With the aid of former Texas Governor John Connally, Ben Barnes created a joint venture with Kindred & Company and laid the groundwork for the Barton Creek Resort & Spa in June of 1985. Two years later, the resort opened and immediately met praise from vacationers and locals alike.

From the beginning, however, the resort constantly sought to expand and increase its hospitality—after all, as the saying goes, everything is bigger in Texas. Under new management, the Austin resort gained another golf course, as well as acquired Lakeside Golf Course, designed by golfing legend Arnold Palmer.

Now known as Omni Barton Creek Resort & Spa, the legendary Texas Hill Country Resort invites travelers to come and experience unrivaled hospitality in a breath-taking environment.

You can contact the hotel for
reservations at: www.omnihotels.com/hotels/austin-barton-creek

Omni Barton Creek Resort & Spa
8212 BARTON CLUB DRIVE
AUSTIN, TEXAS 78735
(512) 329-4000

Additional 5-Year Papers were presented by:

Dr. Yasuhiko Asai - Japan

The Development of a New Functional Appliance (LAGP) ... A winning combination of edgewise and fixed functional appliances

Dr. Isao Koyama - Japan

Expansion In Early Interceptive Treatment Patients Analyzed with Cone-Beam

Dr. David Sabott - Colorado

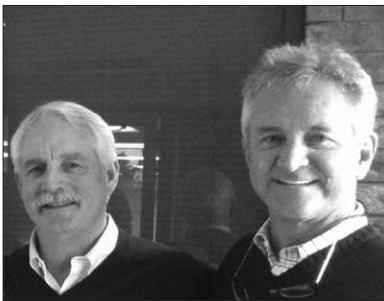
Complexity Checklists and Class III Presentation - Surgical Orthodontic Class III Open Bite

More News from our Members:



*2014 Dewey Award
Winner Phil Campbell*

The Martin E. Dewey Memorial Award is the highest honor that the Southwestern Society of Orthodontists can bestow on one of its members. The annual award was established in 1953 to recognize an individual for outstanding contributions to the advancement of orthodontics in education, practice, and research.



Phil Corbin (L) with Tucker Halton – Director To National (R)

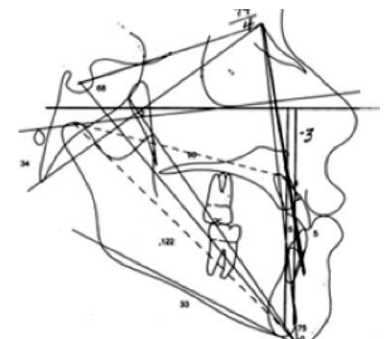
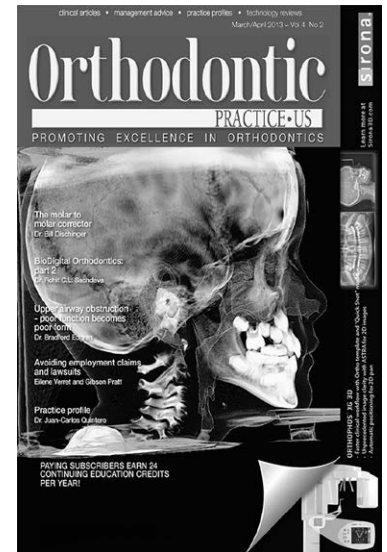
Dr. Phil Corbin was recently installed at the vice-president of the Alexander Study Club of America. Phil also had the honor and privilege to moderate and present at the 2013 Alexander Discipline International Symposium. The topic of his presentation was "Long Term Stability with the Kloehe Cervical Headgear."

Congratulations to:

Component members at work on research publications:

September/October 2014 Issue *Orthodontic Practice - US*
Value of true horizontal in diagnosis and treatment planning
Dr. Larry White evaluates malocclusions via the natural head postures of patients

Dr. William Downs made the invaluable contribution of cephalometric analysis to orthodontics, and though his initial studies had a narrow application, it started the profession on a seemingly endless search for more relevance with this instrument. Researchers have since found that some of the reference points, angles, and planes he and Dr. Richard A. Riedel developed have serious handicaps, but their primacy accounts for their wide use, acceptance, and use with clinicians, schools, insurance companies, & accrediting agencies.



Shannon Owens receives congratulatory plaque in appreciation for his service as President of Rocky Mountain Orthodontic Society.



Dr. / Coach Chuck Alexander making another run for a Colorado 4A state championship

New E-mail Address:

Larry Tadlock - larrytadlock@me.com

Note From AngleSW Treasurer:

The Southwest component now has a PayPal account. To make payments by credit card or PayPal please visit our new secure online payment site at:

<http://fs21.formsite.com/southwestangle/form6/index.html>



Remember: Barton Creek
Resort & Spa, Austin, Texas

April 16-18, 2015

See YA'LL in Texas in April!



Dr. Yasuko Kuroda-Osaka, Japan

In Memoriam:

It is with great sadness that we mark the passing of AngleSW member Dr. Yasuko Kuroda-Osaka ■

URMC MOURNS PASSING OF EIOH ORTHODONTICS CHAIR DR. J. DANIEL SUBTELNY

Dr. Daniel Subtelny
"Our Own Grand Man of Orthodontics":
Acting Chairman, Professor Emeritus
Department of Orthodontics and Dentofacial Orthopedics
Eastman Institute of Oral Health
University of Rochester

A MAN OF THOUGHT, ACTION AND VISION.



*Dr. J. Daniel Subtelny.
Photo by B. Haskell*

It is easy to honor and pay tribute to Dr. Dan Subtelny, a man who has dedicated his life to our profession of orthodontics as a practitioner, researcher and educator. After serving in the both US Army and the US Public Health Service, Dr. Subtelny began his career in dental education. Over the next **five decades** as the chief of orthodontics, he has clinically

educated, supervised and helped publish scores of important contributions to our literature as well as guided the research of hundreds of orthodontic residents. His dedication has enabled both more efficient and less invasive treatment of cleft palate patients as well as made many contributions in the timing of positive Early Treatment methods.

Dan is also appreciated outside of orthodontic circles. He was recently presented the New York State Dental Association's highest honor, the Jarvie-Burkhart Award, in recognition of the great service rendered to mankind in dentistry. The NYS Dental Association is a constituent of the American Dental Association and



represents more than 13,000 dentists practicing in New York State. Named after dental pioneers William Jarvie and Harvey Burkhart, the award was presented to Subtelny, age 89, lauded as one... *"of the world's foremost educators in orthodontics."*

After serving as chairman of the Orthodontics and Dentofacial Orthopedics Division at Eastman Dental for 50 years, Dan Subtelny was asked to return to that role in a temporary capacity, as well as that of program director. Recruited by the notable Dr. Basil Bibby in 1955, Dr. Subtelny organized and established the Eastman Dental Dispensary's first accredited Department of Orthodontics in Rochester, NY., (Today, known as the University of Rochester - Eastman Institute of Oral Health.) where he has remained for his entire career. In further recognition of his dedication to teaching, the American Association of Orthodontists named its 2006 education conference in Dr. Subtelny's honor, and hosted the *J. Daniel Subtelny Education Leadership Conference* during the 106th AAO Annual Session. Dan has graduated many successful orthodontists, a number of whom have distinguished themselves in the specialty and in academics. Some have become deans at U.S. universities and at universities around the world. This large host remains grateful to him as their personal mentor and guide, as I certainly do.

Dan was also one of the early members of the internationally recognized multi-disciplinary cleft palate teams. He has

been a pioneer in the field of craniofacial orthodontics, even before that term was coined. He founded the Cleft Palate Team at the Eastman Dental Dispensary and incorporated the diagnosis and treatment of patients with craniofacial anomalies into his orthodontic curriculum. Many other orthodontic programs around the world have since followed suit. As a result, orthodontists trained by Dan are unusually prominent in treating Cleft Palate patients in their own locals. Dr. Subtelny has lectured on six continents discussing this very topic. Besides the education of hundreds of orthodontists, Dan has published over 70 peer reviewed scientific papers, several book chapters and wrote a text book titled *Early Orthodontic Treatment*, published in 2000.

Remarkably, Dr. Subtelny is the only individual to date to have received all four of the following highest honors in the orthodontic profession:

- American Association of Orthodontists' (AAO) research honor, the Milo Hellman Award (1959)
- AAO Foundation's honor for teaching, the Louise Ada Jarebek Memorial International Orthodontic Teachers and Research Award (1993)
- American Board of Orthodontics - Albert H. Ketcham Memorial Award (1996)



- AAO's James E. Brophy Distinguished Service Award (2006).

Dr. Subtelny has served as president of the American Cleft Palate Association (1964), president of the International Society of Craniofacial Biology (1965), president and director of the American Board of Orthodontics (1969-1976). He is also a Diplomat of the American Board of Orthodontics (1964), a Fellow of the International College of Dentists (1980), a Fellow of the American College of Dentists (1986), and a founding member of the North-Atlantic component of the Edward H. Angle Society of Orthodontists. He has served on many editorial review boards including the *American Journal of Orthodontics and Dentofacial Orthopedics*, the *Journal of the Angle Orthodontist*, and the *American Cleft Palate Craniofacial Journal*.

He has also been recognized by the American Cleft Palate Association for his distinguished service (1980), and the Univer-

sity of Pennsylvania School of Dentistry honored him with a distinguished Alumni Award in 1997. In 1997, the Orthodontic Clinic at the Eastman Dental Center was renovated and named in his honor. The same day, the Mayor of Rochester, New York, and the Monroe County Executive presented him with a Joint Proclamation stating that June 20, 1997, be named the "**J. Daniel Subtelny Day**". This was in recognition for his years of treatment of children with craniofacial needs.

In 1999, he received a well deserved honorary doctorate degree from the University of Athens. To additionally honor Dan, The Eastman Orthodontic Alumni Association and the University of Rochester have established The J. Daniel Subtelny Endowed Chair and Professorship to preserve his educational legacy and continue orthodontic education with the same verve and spirit shown in his remarkable career.

Subtelny graduated from the University of Pennsylvania School of Dentistry earning a Doctor of Dental Surgery degree. He received his orthodontic certificate and Master of Science degree from the University of Illinois, perhaps the most rigorous program and the world leader in orthodontic thought at the time.

Founded nearly 100 years ago by George Eastman, The Eastman Institute for Oral Health is now part of the University of Rochester Medical Center and employs 500 people; a world leader in research and post-doctoral education in general and pediatric dentistry, orthodontics, periodontics, prosthodontics, and oral surgery. Service includes 147,000 patient visits, treating children and adults throughout the Greater Rochester region at many locations. Dr. Subtelny has worked well with other departments and administrators at Eastman, receiving high praise from Director (Dean), Dr. Cyril Meyerowitz.

"Dr. Subtelny is an excellent educator who has contributed significantly," "He is revered by his students and has as much enthusiasm today as he did 35 years ago."

This sums up the reverence and depth of admiration I have for this gentleman; my mentor, my friend and inspiration. A man of thought, action and vision!

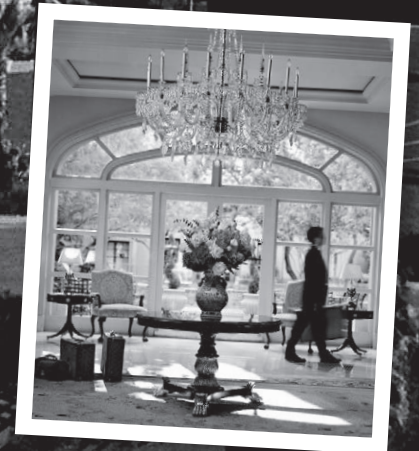
Bruce S. Haskell, DMD, PhD
Professor (Part-Time), Division of Orthodontics
University of Kentucky
Eastman Orthodontic Class of 1975
Angle Orthodontic Society ■

THE EDWARD H. ANGLE SOCIETY RETURNS TO PASADENA

41ST INTERNATIONAL BIENNIAL MEETING SEPTEMBER 25-29, 2015

HOSTED BY **ANGLE SOUTHERN CALIFORNIA**

- PROFESSIONAL CAMARADERIE
- STIMULATING CLINICAL AND SCIENTIFIC PRESENTATIONS
- VISIT WORLD FAMOUS MUSEUMS: THE HUNTINGTON LIBRARY AND THE J. PAUL GETTY
- VISIT THE "ENTERTAINMENT CAPITAL" OF THE WORLD



THE LANGHAM HUNTINGTON PASADENA, CALIFORNIA