



Life Multiplied
BLOOMINGTON
NORMAL



BLOOMINGTON - NORMAL & SURROUNDING CITIES **RESIDENT'S GUIDE**

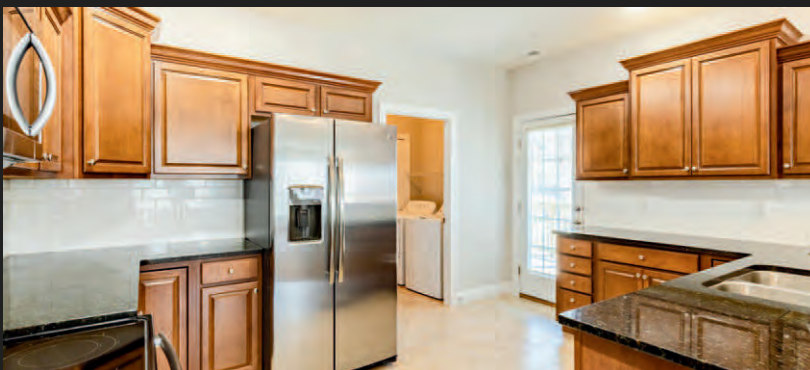
TENTAC apartments



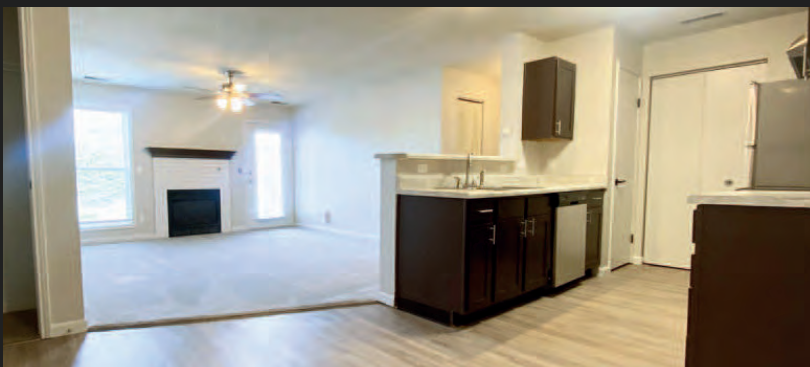
BROOKRIDGE HEIGHTS
APARTMENTS



BRICKYARD
APARTMENTS



ST. IVANS
AT FOX CREEK



**IRONWOOD
GARDENS**
APARTMENTS



Life Multiplied Resident's Guide

Written by

Kaitlyn Klepec and
Pantagraph Media

Photos by

Clay Jackson,
Pantagraph Media
photographers and provided
to Pantagraph Media

2023 Pantagraph Media. This book is published by Pantagraph Media and distributed by the McLean County Chamber of Commerce. Pantagraph Media has made every attempt to verify information contained in this guide and assumes no liability for incorrect or outdated information. No portion of this publication may be reproduced without written permission of the publisher. All rights reserved. The Life Multiplied Resident's Guide is published by Pantagraph Media, 205 N. Main St., Bloomington, IL 61701

Index

We made the list! 4

New Resident's Checklist..... 6

Up & Comers

Up & Comers..... 7

Arts Alive8, 10

Constitution Trail..... 11

Career Potential 12, 13

Kids & Cul-de-sacs

Attractions & Events 14, 15

Child Care & Learning Centers.. 15

Fostering Success..... 17-20

Traditional Times

Must-See Sites..... 21

Tee Time to Trail Time..... 24

Fitness & Film 25

Living the Good Life..... 26

History Comes to Life..... 27

General info pages

Beyond Ordinary..... 28, 29

Diverse & Proud 30-31

Cutting Edge Health Care....33-35

Ease of Access 37

Joy of Shopping 38-40

Let's Eat Out.....41, 42

Drink Up!43





**ILLINOIS STATE
UNIVERSITY**
Illinois' first public university

**CREATE
YOUR
LEGACY**

IllinoisState.edu

 @IllinoisStateUniversity
  @IllinoisStateU
  @illinoisstateu

We made the list!

Bloomington-Normal is an amazing place to live. But don't take it from us. Livability.com, one of the leading online resources that provide data-driven rankings on the best places to live, work and visit, featured Bloomington as one of their 2023 Top 100 Best Places to Live.

Specializing in small to mid-size cities, Livability curates their rankings based on nearly 100 data points measuring economy, housing, and cost of living, amenities, transportation, environment, safety, education and health.

Only cities with a population between 75,000 and 500,000 are showcased— no NYC or L.A. adulation here. Not because those cities aren't incredible but because the biggest cities



continue to see a significant exodus. Where should those relocators head next? Well, we can think of no better place than Bloomington-Normal— where Americans build families, launch businesses and lead meaningful lives.

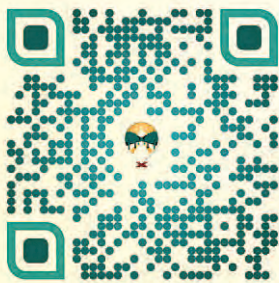
The list's second big differentiator is affordability. Only cities with a median home value of \$500,000 or less have a shot at making our list. And as home prices and inflation go up, Livability recognizes cities with growing wages and home values that also maintain an affordable cost of living.

What makes Bloomington stand out as one of the best places to live in the U.S.? Its solid performance in the education and housing and cost of living categories. Cheers to us!



Life Multiplied

**Learn Why Bloomington-Normal is a
Great Place to Live, Work & Play!**



Scan the QR Code to
Discover 7 Ways You
Can Get Involved!

1. Premier Midwest Location
2. At the Center of it All
3. Multiply Your Career Potential
4. Double the Options, not the Price
5. Not Your Average College Town
6. Beyond Ordinary
7. Get Plugged In

New Resident Checklist

Update your voter registration

Register to vote or update your registration online at www.elections.il.gov, or in person at the office of election authority, at Driver's license facilities, with deputy registrars who are appointed in each jurisdiction, or via mail using the Illinois Voter Registration Application available in English and Spanish.

Register for refuse service

Public Works crew picks up garbage every week and recycling every other week in Bloomington using city-issued cans, register at www.bloomingtonil.gov. The Town of Normal issues carts which will pick up waste on a weekly basis, and recycling bi-weekly. Register at www.normalil.gov.

Set up water and sewer service

For Bloomington, visit www.bloomingtonil.gov. In Normal, visit www.normmmalil.gov.

Register vehicles

Within 60 days of establishing a per-

manent residence in Illinois, new residents who plan to operate a motor vehicle must get an Illinois driver license and title and register their vehicles with the Illinois Division of Motor Vehicles. Visit the DMV online at www.apps.ilsos.gov to order new registration, or schedule an appointment.

Auto license tags must be purchased within 60 days of relocating to the state. Just bring your car title, proof of insurance and odometer reading.

New residents must apply for an Illinois driver's license within 60 days of relocating to the state. Vision and written tests are required. You can also register to vote at the DMV office.

Get familiar with your city/town's public safety services

The Bloomington-Normal area provides a variety of programs to the community through the Police and Fire Departments. For more information about programs and

services, visit your respected community Police and Fire sites.

Register pets

To register your pets, visit the animal registration section of McLean County Government's website at www.mcleancountyil.gov.

Libraries

Bloomington Public Library

205 E Olive St.

Buck Memorial Library

(Located inside Illinois Wesleyan University)

1111 N East St, Bloomington

Milner Library

(Located inside Illinois State University)

201 N School St, Normal

Normal Public Library

206 W College Ave

The Ames Library

(Located inside Illinois Wesleyan University)

1 Ames PI E, Bloomington

Library cards are **FREE!**



SCAN QR

Apply for a Library card

The Library's **600** annual programs are also **FREE!**



Bloomington Public Library

205 East Olive Street
309.828.6091
BloomingtonLibrary.org

We Deliver

PIECE OF MIND



PLATINUM PLUMBING

\$50 OFF ANY SERVICE

Scan or call to schedule!

(309) 270-1303



Up & Comers

Bloomington-Normal is a community of movers, shakers, learners, and educators.

We're proud to be ranked among America's best college towns. Nearly 44% of our residents have a bachelor's degree, making us one of the most educated metro areas in the state. Illinois State University, Illinois Wesleyan University, and Heartland Community College collectively graduate 4,600 students annually.

There's electricity in the air here—from the inno-



vation happening as part of Heartland Community College's electric vehicle program to the startups taking flight at the Illinois Wesleyan's innovation and startup hub—IDEA center. Are you interested in upskilling or transitioning your career? Try your hard at work-ready programs in construction, trades, technology, education, or digital media at Heartland Community College. Beyond higher ed, Bloomington-Normal educates students of all ages at our school districts and 10 private schools.



Arts Alive

Bloomington-Normal is home to many lively events in the performing arts to keep one entertained year-round. Between our many live music venues, art galleries, festivals and more, the vibrant scene keeps residents of the Twin Cities on their toes.

Music Venues

- Bloomington Center for the Performing Arts
- Cadillac Jack's
- The Castle Theatre
- Corn Crib

Please see **EVENTS**, Page 10



Scan for a
calendar of events





Close. Convenient.
Your access to the World.

 **DELTA**  **FRONTIER** AIRLINES  **American Airlines**  **allegiant**

 **Central Illinois
Regional Airport**
— at Bloomington-Normal

Always free parking! | #FlyCIRA | www.CIRA.com



Discover Heartland.
**DISCOVER
YOUR FUTURE.**

Apply Now.

 **HEARTLAND**
COMMUNITY COLLEGE

Heartland.edu

Rob Dob's

Restaurant & Bar

Enjoy a delicious menu featuring everything from seafood and steaks to chicken and pasta, and even homemade favorites like meatloaf. There is something to fit everyone's appetite!

309 590-3434
801 N. Hershey Road, Bloomington
Check out our menu at robdobsbn.com or on our Facebook at @robdobsrestaurant



Events

From 8

- CRAFTED Commons Place
- Daddios
- DR. McKay's Bar & Grill
- Drifters Pub
- Gill Streets Sports Bar & Restaurant
- Grossinger Motors Arena
- Jazz UpFront
- Legends Sports Bar & Grill
- Loungeabout the Roundabout
- Mackinaw Valley Winery
- Maguire's Bar & Grill
- The Mystic Kitchen & Tasting Room
- Nightshop
- Shooter's Lounge
- Rob Dob's Restaurant & Bar
- VFW Post 454
- Windjammer Lounge



Illinois Shakespeare Festival

The nationally renowned Illinois Shakespeare Festival attracts over 10,000 patrons each season to the fabulous open-air Ewing Theatre on the grounds of the Ewing Cultural Center.

illinoisshakes.com

Tailgates N' Tallboys

Tailgates N' Tallboys country music festival comes to town annually during the summer and features a weekend full of music from some of the biggest names in country.

tailgatentallboys.com/bloomington

Saturdays on the Square

Downtown Bloomington is thumping with live music, as this series of four free summer concerts fill the streets with live music lovers. Saturdays on the Square is one big outdoor party.

Bruegala

This local charity beer festival features craft beers from local and regional breweries, as well as food trucks, live music

and games.

bruegala.com

Bloomington Center for the Performing Arts

The BCPA presents diverse programming featuring national and international touring artists. The BCPA hosts a variety of acts, productions of Broadway classics, tribute bands and more.

artsbloomington.org

Castle Theatre

The Castle features locally up-and-coming artists, as well as nationally-established artists featuring a variety of music types for any taste.

thecastletheatre.com

Grossinger Motors Arena

Since its opening in 2006, Grossinger Motors Arena has been the Twin Cities go-to for music, sporting events, conferences and more.

grossingermotorsarena.com

Art Galleries/Performing Arts

Bloomington-Normal offers an array of cultural assets including a company of artists, many nationally known. Some famous artists who have made or currently make their home in the Twin Cities include Harold Gregor, Ken Holder, Gina Perillo, Joel Meyer, Herb Eaton and Nick Africano.

Performing Arts

- The Barn III Dinner Theatre and Event Center
- Community Players Theatre
- Ewing Theatre
- Heartland Theatre Company
- Illinois Symphony Orchestra
- ISU Center for the Performing Arts Theatre & Westhoff Theatre
- IWU McPherson Theatre & Westbrook Auditorium



- Midwest Institute of Opera (MIO)
- Prairie Fire Theatre

Local Art exhibits

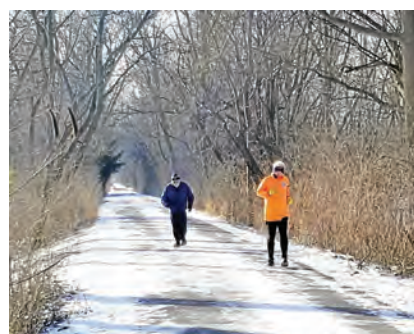
- The Bloomington Creativity Center
- The Hangar Art Co.
- Illinois Art Station
- Illinois Wesleyan University Merwin and Wakeley Galleries
- McLean County Arts Center
- Sugar Creek Arts Festival
- University Galleries of Illinois State University

410 Sculpture Park

This unique and beautiful public space features a wide variety of sculptures in styles ranging from bold and abstract to thought-provoking and whimsical, all created by local artists.

<https://powerhouse-art.com/410-sculpture-park>





Constitution Trail

This 45-mile multi-use rail trail runs right through the Twin Cities, giving the community access to the scenic outdoors. One can discover much of the

Bloomington-Normal by traveling the Constitution Trail! Whether biking, rollerblading, walking or running, the trail is an outdoor adventure with a unique history, parks and landmarks.



MAJESTIC
INTERIOR DESIGN

MAJESTICINTERIORDESIGN.COM

Shop Local

PLEASE USE UPLOADED LOGO
www.cmpromos.com

Because we know this isn't what you meant.
customerservice@cmpromotionsinc.com
CMPromotionsInc.com

CMPromo!
A Geiger Company

Promotional Products | Branded Apparel | Corporate Programs | Fulfillment

THE COPY SHOP
Since 1954

CREATIVE DESIGN
SERVICES **WEDDING & SOCIAL PRINTING** DIGITAL
FULL COLOR PRINTING
OFFSET PRINTING LARGE
FORMAT PRINTING
ARCHITECTURAL PRINTS
MOUNTING & LAMINATING
BINDERY SERVICES
AND MORE!

WE ARE YOUR LOCAL PRINTER!

BEST of READERS' CHOICE AWARD
FIRST 2021
BEST of READERS' CHOICE AWARD
FIRST 2022
BEST of READERS' CHOICE AWARD
FIRST 2023

302 E. WASHINGTON // BLOOMINGTON, IL
309.827.5466 // thecopysheponline.com



Multiply Your Career Potential

An insurance town that's also a thriving electric vehicle manufacturing hub, Bloomington-Normal is both reliable and forward-thinking, boasting more than 3,600 companies and a wide array of high-paying jobs. The average age is 34, and the median household income is \$67,332. The job market is booming, with nearly 5,000 openings across our key industries, including business, tech, entrepreneurship, agribusiness, logistics, and manufacturing.

Home to headquarters locations for both State Farm and GROWMARK, the insurance industry employs more than 18,000 people. Electric vehicle maker Rivian Automotive (one of the 2022 TIME 100 Most Influential Companies) recently



**Bloomington
Mayor Mboka
Mwilambwe with
Illinois Governor
JB Pritzker**



MAJOR EMPLOYERS

1. State Farm Insurance 13,000+
2. Rivian 7,500
3. Illinois State University 3,452
4. COUNTRY Financial 3,241
5. Unit 5 Schools 2,350
6. Carle BroMenn Hospital..... 1,995
7. OSF St. Joseph Medical Center.....1,657
8. City of Bloomington 890
9. McLean County 832
10. District 87 Schools..... 745
11. Heartland Community College 572
12. GROWMARK, Inc. 529
13. Illinois Wesleyan University..... 523
14. Town of Normal..... 476
15. Ferrero USA..... 440
16. IAA/Illinois Farm Bureau 309
17. Heartland Bank & Trust..... 285
18. Heritage Operations Group..... 255
19. Chestnut Health Systems 250
20. Tentac Enterprises..... 209
21. Brandt.....190

*Source: EDC Economic Profile






Scan here for a list
of job openings.

opened its Normal manufacturing facility, employing 7,500 people. And our community is not new to the electric vehicle manufacturing world—Mitsubishi also built electric vehicles here, which is why we have more charging stations than any other town in Illinois.

Bloomington-Normal boasts one of the youngest, most educated, and most

talented workforces in the Midwest. On top of a competitive job market post-grad with many large corporations finding home in the Twin Cities, the educational opportunities in this area are endless. Such as Heartland Community College which offers Work Ready programs for training, degrees, and certificates in many fields that are in high demand.





ANCHO & AGAVE

tacos + amigos + tequila

3006 E. Empire Street • (309) 590.3200

ANCHOandAGAVE.com

FUN AND GAMES

FOR EVERYONE

301 N. MAIN ST. BLOOMINGTON, IL





REDRACCOON GAMES

SCAN TO SEE OUR LINKTREE!





Kids & Cul-De-Sacs

With affordable housing and great schools, Bloomington-Normal provides a safe and family friendly community. Ranked in top 20 of most livable cities in the US by SmartAsset, this bustling area is known for its friendly people, vibrant culture, excellent food and centralized location.

Gamma Phi Circus

gammaphicircus.illinoisstate.edu

Illinois State University's Gamma Phi Circus dazzles crowds with their unique performance troupe that perform acrobatics and gymnastics, aerial hoop and cloud swing.

Miller Park Zoo

bloomingtonparks.org/facilities/miller-park-zoo



The zoo offers a variety of exhibits including a Sumatran tiger, greater flamingoes and zookeeper interaction opportunities.

Children's Discovery Museum

childrensdiscoverymuseum.net

From driving a combine to conducting an orchestra to running a restaurant, the Children's Discovery Museum in Uptown Normal is three floors of fun.

Make Music Normal

normalil.gov/1641/Make-Music-Normal

Make Music Normal is a free, two-day concert in Uptown Normal held every summer. Attendees are given the opportunity to learn choreography, sing and play instruments.

Illinois Art Station

illinoisartstation.org

The Illinois Art Station creates a fun, hands-on learning atmosphere where children and youth engage with art.



Day of the Dozer

facebook.com/Dayofdozer

This unique experience allows kids the hands-on opportunity to see, ride and even operate heavy machinery (with a professional at their side).

McLean County Fair

mcleancountyfair.org

This 5-day event features the largest 4-H show in the world, plus carnival rides, live music, food, demolition derbies and much more.

Day of Play

Taking place in late September each year, the Day of Play showcases various activities including interactive and engaging games for the whole family.



Spray Parks

Spray parks are a fun, free way to cool off during the hot summer months.

- McGraw Spray Park
- Miller Spray Park
- Tipton Spray Park

Child Care and Learning Centers

- Alphabet Soup Academy, Inc.

- Blooming Grove Academy
- Bloomington Day Care Center, Inc.
- Bright Horizons Childcare and Early Ed
- Cadence Academy
- Chesterbrook Academy
- Child Care Connection Learning Center
- Children's Home & Aid
- Club House Child Care Center
- Corpus Christi Catholic Preschool
- Debra T. Thomas Learning Center
- Epiphany Catholic Preschool
- Heartland Head Start
- Katie's Kids
- Kindercare Learning Center
- La Petite Academy
- Little Jewels Learning Center
- Little Lamb Preschool
- Milestones Early Learning Center
- Montessori Children's Centre
- Noah's Ark Nursery School
- Rocking Horse Child Care Center
- Schott Early Learning Center
- Scribbles Center for Learning, Inc.
- Second Presbyterian Church Preschool
- Shining Star Learning Center
- YMCA
- YMCA Sarah Raymond Ece Center
- YMCA Young Wonders



Photo: stothargisphoto.com

children's
discovery
museum

Three floors of fun!

Exhibits ⚙️ Classes & Camps

Memberships ⚙️ Family Fun Nights

← **New Exhibit!**
Lucky Climber Now Open

Open late Thursdays & Fridays!

ChildrensDiscoveryMuseum.net

101 E Beaufort Street • Uptown Normal
309-433-3444

ChildrensDiscoveryMuseumNormal

@cdmnormal

HERE TO HELP. HERE TO CARE.

There's nothing more important than your health. That's why finding a healthcare partner you can trust is so important.

At Christie Clinic, caring is our specialty.



34
SPECIALTIES



24
LOCATIONS



207
MEDICAL PROVIDERS



PATIENT PORTAL

Christie Clinic in Bloomington on Empire

2502 E Empire St. • Bloomington, IL 61704

SPECIALTIES

Audiology • ENT • Endocrinology • Family Medicine • Hearing Aid Services • Infusion
Laboratory • Neurology • Pulmonary Medicine • Urology • Vein & Vascular

Christie Clinic at Medical Hills

1401 Eastland Dr. • Bloomington, IL 61701

SPECIALTIES

Internal Medicine • Laboratory • Pediatrics • Physical Therapy • Radiology



CHRISTIECLINIC.COM



CHRISTIE
CLINIC



Fostering Success

With two renowned universities and an innovative and responsive community college, Bloomington Normal offers educational opportunities that set students up for success starting as young as preschool.

Some of the education opportunities for our youngest students include: STEM and HEAT initiatives which include several robotics and coding clubs and programs in cybersecurity and solar, wind and EV.

- Language programs including The Language Spot which recognizes the importance of learning a second language at an early age.
- Fine Arts Programs that are taught by State-certified master art teachers at venues including the Illinois Art Station, the Art Studio and the Little Art School
- Music programs/education including Kindermusik, Hip Cat Music School and



the Illinois Symphony Youth Orchestra.

- Chess clubs including 2022 state champs Grove Elementary School's Chess Club.

As students progress to junior and high school, McLean County delivers cutting-edge educational experiences that promote collaborative endeavors between the business/industry sector and our public schools.

These include:

- AP (Advanced Placement Courses)
- Honors programs
- Dual enrollment programs
- National Honor Society
- Clubs and organizations
- Community service and volunteer opportunities
- Debate and speech teams
- Championship winning sports teams

By aligning with the key stakeholders of our local economy, we have formed partnerships that actively involve our students in meaningful and applicable learning experiences. One of the best examples of these community partnerships is the Bloomington Area Career Center.



Bloomington Area Career Center (BACC)

BACC serves 700 students from McLean County High Schools and offers approximately 20 courses including everything for cosmetology to culinary arts to the much-in-demand welding courses.

Almost half the instructors are industry

experts, like the local firefighters that teach EMT courses.

While some students go right into the workforce, the majority go on to higher education, with the bonus of achieving college credit for the BACC courses they have completed.

Growing With Your Community



CEFCU Not a bank. Better.®

We've been part of the McLean County Community for **more than 20 years...** providing business and personal financial services.

Find out what we can do for you! Come see us at a Member Center or learn more at cefcu.com.

Let us help you in every phase of your life.



Starting or growing a business



Buying a home



Moving across country



Providing for your family



Planning for retirement



Investing in your future

cefcu.com





**ORTHODONTIC
ASSOCIATES**
of CENTRAL ILLINOIS, PLLC

**Schedule your
complimentary
orthodontic consult with
Drs. Peterson or Finlen
by calling
(309) 662-5331**

**111 N. Regency Dr. Bloomington, IL 61701
www.orthodontic-associates.com**



**Let us help you create a professional
work environment whether it's with
a new building or renovating your
current one.**



**2028 Warehouse Rd., Normal
309-454-5885
www.jspencerconstruction.com**



Scan here for a list of
McLean County schools.



Scan here for a report card
of McLean County schools.

Clearly welcoming.



Clearly you.

At VisionPoint Eye Center, you're the priority. Enjoy friendly, efficient visits and receive seamless, integrated care from the area's familiar leaders in eye health care. We're here to give you an unparalleled eye care experience.



309.662.7700
visionpointeye.com

1107 Airport Road
Bloomington, IL



**All Your Gardening
And Animal Care Supplies
in One Place!**



The Best Selections of Plants
in Central Illinois



Your One-Stop Shop For All
Of Your Lawn & Garden Needs



Pet & Animal Supplies for
Domestic & Exotic Pets



The Best Wild Bird Seed, Critter
Feed & Supplies for Other Wildlife

📍 916 E. Grove St., Bloomington
Open 7 Days a Week!

☎ 309-828-2722 🌐 abhatchery.com

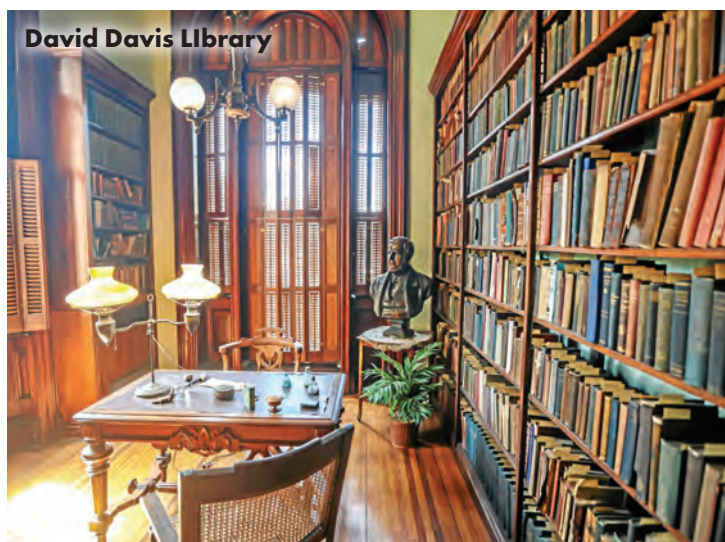
Traditional Times

Bloomington-Normal offers the 55+ crowd a vibrant lifestyle with many active recreation and fitness programs designed for seniors. Heart-

land Community College and the ARC Activity and Recreation Center offer continuing education and personal enrichment. Bloomington is also

home to world-class medical care, libraries, a regional airport, Amtrak and many parks and golf courses. Culturally, there is a lot to experience

with the Illinois Symphony Orchestra, The Illinois Shakespeare Festival, and the multitude of events that the local colleges offer.



David Davis Library



Ewing Cultural Center

Must-See Sites

David Davis Mansion daviddavismanor.org

Completed in 1872, the David Davis mansion is a mid-Victorian style home which combines both Italianate and Second Empire architectural designs. Named Clover Lawn, the David Davis mansion was the home of David Davis, a friend of Abraham Lincoln's.

McLean County Museum of History mchistory.org

The Museum is housed in the old McLean County Courthouse, which was completed in 1903. It is a nationally accredited, award-winning museum with seven exhibit galleries.



Vrooman Mansion vroomanmansion.com

Built in 1869, the mansion was once the home of Matthew T. Scott and his wife, Julia. An

18-room addition, designed by Arthur L. Pillsbury and included the iconic stained glass windows, was constructed in 1900.

Ewing Cultural Center ewingmanor.illinoisstate.edu

This historic landmark was built by Hazle and Davis Ewing and incorporates many elements borrowed from their world-wide travels. After her death, Hazle Buck Ewing bequeathed the residence to the Illinois State University Foundation.

Sprague's Super Service Station facebook.com/SpraguesSuperService

Built in 1931, Sprague's Super Service was a historic independent gas station on Route 66 in Normal.



Scan for more
historical sites

The Best Place in Town for Meetings & Specials Events!

- 3rd largest banquet space in town perfect for conferences, weddings, meetings, trade shows, and special events – from 10 to 800 people.
- Stay in our newly renovated, elegant, comfortable rooms and suites with complimentary hot breakfast and Wi-Fi.
- Ask about our local business partnership options and special not-for-profit pricing.
- Ask about our bring your own caterer (BYOC) or Full service catering options.



Bonchon

Located within our hotel, the full dine-in restaurant with a full bar features Korean comfort food and hand crafted specialty cocktails. Make sure to order Bonchon's world famous Crunchy Double Fried Crispy Wings! www.bonchon.com

 **Parke Regency**
HOTEL & CONFERENCE CENTER



Sleep Here



Eat Here



Meet Here



It All Happens Here

309-662-4300
1413 Leslie Drive,
Bloomington
parkeregency.com

Follow us on Social Media:  www.facebook.com/ParkeRegency  [@parkeregency](https://www.instagram.com/parkeregency)



Expanding Specialty Care

SPRINGFIELD CLINIC BLOOMINGTON-NORMAL



LEARN MORE ABOUT

expanded primary and specialty care at
Springfield Clinic Bloomington - Normal.



ACCEPTING NEW PATIENTS • 309.319.7360



From Tee Time to Trail Time

Bloomington-normal offers the active outdoor lover a huge variety of green spaces and fun activities. There are sanctioned and charitable runs almost every weekend, seven challenging golf courses, aquatic centers, spray parks, paddle boarding, fishing, horseback riding, dog parks and much more!



Scan for a list of Parks and Recreation opportunities



Activity and Recreation Center & the Normal Theater

Activity and Recreation Center

Serving the 55+ community in Bloomington-Normal for over three decades, Normal's Activity and Recreation Center (ARC) is one of the largest senior services centers in the state of Illinois, offering daily exercise programs and more than 50 free activities per month including art classes, lectures, music, cards and games. Fitness activities include access to an indoor walking track, pickleball courts, exercise studio and personal training. Programs include Mindful Meditation, technology training on things like apps and general computer assistance and much more.

Normal Theater

Located in Uptown Normal, Normal Theater is a beloved venue that retains its nostalgic movie charm. Opened in 1937, The Normal Theater is authentically restored to its Art Moderne cinema state, and is recognized on the National Register of Historic Places. The Normal Theater shows a curated mix of historic vintage, modern and contemporary films, cult favorites and international titles. The Theater also hosts live events such as concerts, comedy shows and lectures, making it a multi-faceted cultural destination in Uptown Normal.



CARLOS T. MIRANDA

Normal Theater Thursday (Dec. 7, 2006) in uptown Normal. (Pantagraph/CARLOS T. MIRANDA)

Tracy Patkunas; 3 x 2.3; Color; 159907-1;
Chamber Book - 1/8th

Did you know that Merle Norman Cosmetics does more than just makeup?

They do manicures, pedicures, facials, body and facial waxing, spray tan, ear piercing, eyebrow and lash tinting and ear candling.

Bring this in for \$10 off a Merle Norman product or service.
(not good on previous purchases or in conjunction with any other offers. One per person.)

Call for an appointment 309-663-4733

Check out our website for a full list of services:
www.merleblm.com and like us on Facebook and Instagram for the most updated deals @merleblm



MERLE NORMAN
cosmetics & day spa

120 Krispy Kreme Drive, Suite #1
Bloomington, IL 61704



909 N. Hershey Road, Suite 2
Bloomington, IL
309-662-6711
www.drmmckays.com

A fantastic place to meet up with friends or make some new ones!

Check out our menu



Check out our taps



Private Video Gaming Room, 11 Screens, 15 Taps, and the Best Wings in town with more than 23 Wing Sauces!

Like and Follow us on Facebook and Instagram!

Living the Good Life

Bloomington-Normal is home to many first-rate independent and assisted living facilities that celebrate active aging. With a variety of living options and amenities, life in the Twin Cities gets better with retirement.

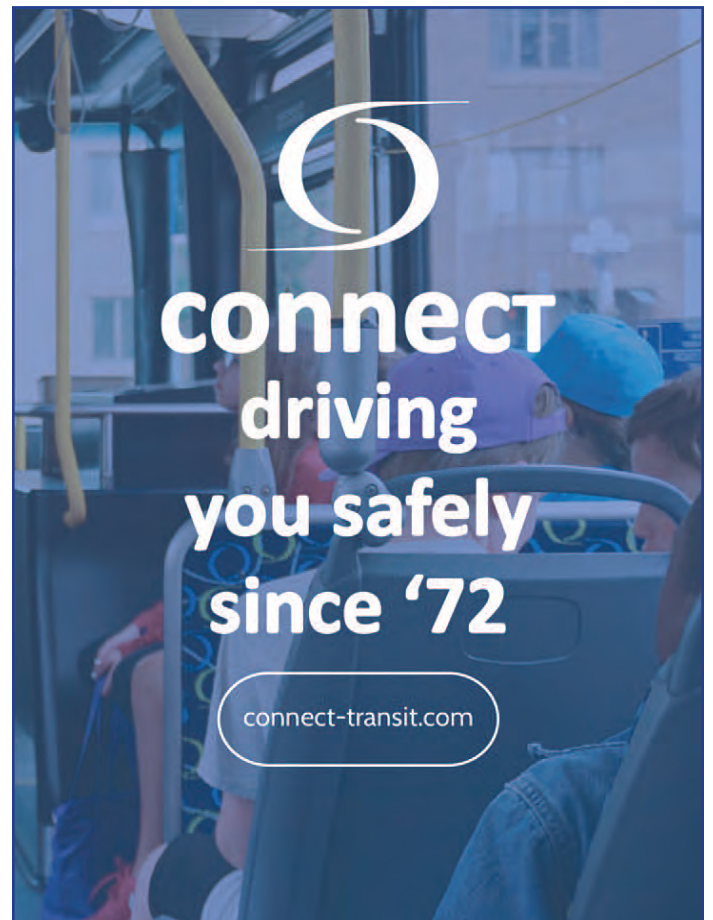
- Arcadia Care
- Bickford of Bloomington
- Carriage Crossing Senior Living
- Evergreen Senior Living
- Holiday Blair House
- Luther Oaks
- The Village at Mercy Creek
- Villas of Holly Brook Assisted Living
- Washington Senior Apartments
- Westminster Village



**Our clients never outgrow us.
And we never outgrow them.**



lifelongaccess.org



History Comes to Life



The Evergreen Cemetery Walk

mchistory.org/learn/evergreen-cemetery-walk

This award-winning, nationally recognized outdoor theatrical program is often referred to as the “granddaddy” of all cemetery walks. Evergreen Memorial Cemetery is one of the richest historical resources in our community. Many unique individuals are showcased including businessmen, soldiers, nurses, housekeepers and even Dorothy Gage of Wizard of Oz fame.



Looking for Lincoln

lookingforlincoln.com

Looking for Lincoln is an interactive tour, allowing people to walk in Lincoln's footsteps. Few places in Illinois played a more important role in shaping Lincoln's political success than Bloomington-Normal. It was home to some of Lincoln's closest friends and colleagues, including Jesse Fell.



Together we grow...

one jewel at a time

Little Jewels Learning Center offers ...



Experienced, friendly, professional staff



Family-like atmosphere

Curriculum designated with the whole child in mind.



Little Jewels has three convenient locations across Bloomington-Normal

Evergreen
1730 Evergreen Blvd., Normal
(309) 808-0006

Oakland
4117 E Oakland Ave., Bloomington
(309) 662-0303

Williamsburg
210 N. Williamsburg Dr., Bloomington
(309) 808-0051

www.littlejewelslearningcenter.com

Beyond Ordinary



Live life like it's meant to be lived in Bloomington-Normal, with an emphasis on LIVE!

Downtown Bloomington is the historic arts hub, with dozens of galleries, boutiques, and live music. Uptown Normal is hip and collegiate and teeming with restaurants and shops.

Catch live music at The Castle Theatre, Nightshop and Grossinger Motors Arena, or enjoy a free outdoor show as part of the summer downtown concert series. Festivals are a fixture here, including the annual Shakespeare Festival, the Sugar Creek Arts Festival, and many more.



BIAGGI'S
RISTORANTE ITALIANO

PRIVATE EVENT ROOM
Host an Unforgettable Event at Biaggi's

3010 East Empire Street • Bloomington
(309) 661.8322 • www.BIAGGIS.com

**ARTISAN
BREADS
SANDWICHES
CATERING
AND MORE**

DAILY GOODNESS
BAKED FRESH

(309) 662-8500
1704 Eastland Drive
Bloomington, IL 61704
BloomingtonBread.com

Family Owned in Bloomington-Normal



Sugar Creek Arts Festival



Sweet Corn Festival



Saturdays on the Square



**LIBRARY
CARDS ARE
FREE!**

SCAN TO
SIGN UP!



normalpl.org



Extensive collection
of physical & digital
materials.



Wide variety of
events & activities
for all ages—
including book
clubs & reading
challenges.



Great place to
study, work, and of
course, read!



NORMAL
PUBLIC LIBRARY





Diverse & Proud

McLean County is passionate about being an inclusive community that celebrates diversity in ethnicity, race, age, gender, identity, sexual orientation, self-identity, and perspectives. Central Illinoisans are famous for helping their neighbors, supporting those in need and working together for an inclusive and safe environment for all.

General

Human Relations Commissions of Bloomington and Normal

The primary responsibility of the commissions is to eliminate unlawful discrimination within the Cities of Bloomington and Normal. The commissions also serve



as catalysts to resolve conflicts within the community, through the use of medication and conciliation.

Labyrinth Outreach Services To Women

A non-profit group that helps ex-offenders adjust to the community after jail or prison.

Anti-Bullying

District 87

Bloomington schools' homepage, with Talking Tips for Parents and Teachers for School Violence (In English and Spanish).

Unit 5 Anti-Bullying

Resources for Normal students to report bullying, with cyberbullying a special focus.

LGBTQ+

Illinois State University LGBT/Queer Studies and Service Institute

Devoted to "equity and social justice" for the campus LGBT community.

Illinois Wesleyan University LBGTQ+ Student Life

A comprehensive clearinghouse of resources for the LGBT community.

Parents and Friends of Lesbians and Gays



Prairie Pride Coalition

Advocacy for Central Illinois' LGBT community.

Latino

Conexiones Latinas

Information about and education for McLean County's Latino community.

Indian/Asian

McLean County India Association

Resources, outreach, and information for McLean County's Indian residents, students, and workers.

African-American

100 Black Men of Central Illinois

Mentoring, scholarship guidance, and health and wellness resources particularly for young African-Americans.

Bloomington-Normal Black History Project

A collection of objects relate to club organizations and churches of the local African-American community.

Bloomington-Normal NAACP

Resources, issues, and advocacy for the African-American Community.

Faith and Fairness

Hindu Temple of Bloomington-Normal

Worship and resources for the Hindu community.

Islamic Center of Bloomington-Normal

Worship and resources for the Islamic community.

Moses Montefiore Temple

Worship and resources for the Jewish community.



Scan here for more information about inclusion

LEARN MORE

NOURISH YOUR MIND, BODY, & SPIRIT

at the Bloomington-Normal YMCA

BNYMCA.ORG | 1.309.827.6233 | INFO@BNYMCA.ORG

Liliana Taimoorazi Top Real Estate Broker

- Relocation Specialist
- Designations CRS, GRI and ABR
- Full time Agent
- 22 Years of Experience
- Award Winner for Loyalty, Integrity
- Excellent Customer Service
- Languages: English, Italian and Persian

Please contact Lilliana for all your Real Estate needs!



**COLDWELL BANKER
REAL ESTATE GROUP**

Liliana Taimoorazi

309.826.5559

www.lilianacoldwellhomes.com






We are proud to be a **food cooperative**, owned by 2500+ of your neighbors and open to everyone to shop!

Find the best seasonal flavors, fresh deli offerings, and items from 75+ LOCAL producers on our shelves. **Shop where your dollar stays local and does a world of good.**

\$15 OFF

your purchase of \$50 or more

Limit 1 per customer. Cannot be used towards gift certificates or ownerships. No cash value. Exp. 12/31/2025

EVERYONE is WELCOME!

921 E. Washington St. Blm
Open 8am-8pm daily
309-306-1523





At Least

\$34,000

PER YEAR!


McLean County Scholarship Guarantee



SCAN TO LEARN MORE




#1 in ILLINOIS
AND **#7 in the NATION** for
JOB PLACEMENT
Zippia, 2023




Change Your Address...
Not Your *Lifestyle*

Independent Living • Assisted Living
Memory Care • Skilled Nursing Care
Call Us Today To Learn More!

(309) 663-6474 • 2025 E. Lincoln St., Bloomington, IL • westminstervillageinc.com







Cutting Edge Health Care



Bloomington-Normal is home to many nationally recognized health care facilities and providers. From heart health to cancer to eye centers to dental and mental health, McLean County has an overall health score of 69, well above the average of 48.

McLean County is also ranked 14th of 102 counties in Illinois in health care. Below are some of the many notable facilities in the area.

Birth Center of Bloomington-Normal

A birthing center is a safe, comfortable



haven that provides healthy women holistic family-centered care with an emphasis on pregnancy, birth and breastfeeding support.

Carle BroMenn Medical Center

Carle BroMenn Medical Center has served the people of Central Illinois for nearly 125 years. They offer top-notch care in neurology, cardiology, orthopedics, obstetrics, behavioral health services and more. They are also a teaching facility and offer residency programs in neurosurgery, neurology, family medicine and clinical pastoral education. **Carle BroMenn was recently named one of the “Best Places to Work in Healthcare”** by Modern Healthcare magazine and was given the American College of Cardiology’s NCDR Check Pain MI Registry Platinum Performance Achievement Award, one of only 212 which were awarded nationwide.

As of 2020, Carle renovated their Behavioral Health Unit for inpatient mental health and addiction recovery.

OSF St. Joseph Medical Center

OSF St. Joseph is designated a **Magnet hospital and named a Top U.S. Hospital**

by The Leapfrog Group as one of only 14 hospitals across the nation, and one of only six in Illinois, to continuously earn an “A” rating for patient safety.

Christie Clinic

Christie Clinic is one of the largest physician-owned, multi-specialty group medical practices in Illinois. Christie has 39 departments including 34 specialties and 24 locations conveniently located throughout central Illinois. Providers and staff are known for having a truly personal touch with patients.

Carle Cancer Center

With a comprehensive team of specialists, Carle specializes in the treatment of numerous types of cancer, including complex and advanced stage cases. The Center houses state-of-the-art equipment that allows the team to more accurately locate, stage and treat the disease.

Fort Jesse Imaging Center/ Gale Keeran Center for Women

Fort Jesse Imaging Center is a free-standing, multi-modality outpatient

diagnostic imaging center that brings together advanced technology, skilled staff, convenience and comfort. They were named a **2021 Guardian of Excellence Award winner** by Press Ganey. The Center was recognized as a top-performing healthcare organization achieving the 95th percentile or above for performance in patient experience.

The VEIN Specialists of Bloomington-Normal

The VEIN Specialists is dedicated to treatment of vein disease and offer endovenous laser ablation, a non-surgical procedure.

Advanced Women’s Healthcare OB-GYN

Advanced Women’s Healthcare offers a full array of OB-GYN services including menopause, VBAC and contraception.

Springfield Clinic

Springfield Clinic is a pediatric clinic that also offers urological care and hosts a specialty outreach center. The Clinic was recently recognized as one of Newsweek’s Top 100 Most Loved Workplaces.



McLean County Unit District No. 5

Educating each student to achieve personal excellence

Remarkable Educators • Innovative Curriculum • Exceptional Schools

McLean County Unit District 5 offers innovative academics for all learners taught by highly-dedicated staff committed to excellence. As one of the largest districts in the area, our facilities are comprised of 16 elementary, 4 junior high and 2 high schools, in addition to a vocational training center and early learning programs. We foster a climate and culture of respect for students, families, and staff and offer educational equity and excellence for all.



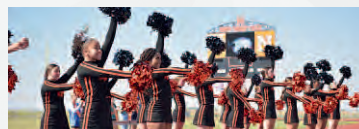
1:1
Device for All Students
Pre-K to 12th



38
Advanced Placement
and Dual Credit Courses



92%
or Higher
Graduation Rate



1809 W Hovey, Normal, IL 61761 • Unit5.org



Bloomington-Normal Healthcare Surgery Center

Bloomington Normal Healthcare Surgery Center is a full-service outpatient surgical facility. The facility offers the latest surgical technology and anesthetic techniques.



Welcome to our Community!

You are invited to Eastview Christian Church

We can't wait to meet you!

Join us at one of our three campuses on Sundays at 9:00am or 11:00am. There are programs and activities and small groups for ages birth through adult. We also have sports leagues for kids and adults.

Our Normal Campus offers a food pantry which is open to the public as well as many other programs to help our surrounding schools and neighbors.

Join us on Sundays at 9:00am or 11:00 am!



Normal
1500 N. Airport Rd.
Normal, IL



Bloomington
401 Union St.
Bloomington, IL



Online Campus
live.eastview.church
Sundays or on demand



www.eastview.church

For more information:
Nicki Green
Pastor of Involvement
e: ngreen@eastview.church
P: 309.451.5033.



You Belong In *Bloomington*

Visit us at bloomingtonil.gov & downtownbloomington.org

YOUR NEWS.
THE WAY YOU **CHOOSE.**



DOWNLOAD THE NEW PANTAGRAPH APP



bopi® **print+**
press **forward.**

conventional printing • digital printing
variable data • certified mailing • bindery
promotional products • e-commerce

Learn more at bopi.com

1705 S. Veterans Pkwy
Bloomington, IL 61701

309-662-3395

1801 Hollister Whitney Pkwy
Quincy, IL 62305

217-222-5145



Let your business reach new heights!

Contact me today at 309-532-1808 or visit our website
at www.axis360.co to find your dream space.

We specialize in all things commercial real estate:

- Investment Properties
- Sales
 - Buyer & Sellers
- Leasing
 - Tenants & Landlords
- Office
- Retail
- Industrial
- Multi-family
- Land

AXIS
360
COMMERCIAL REAL ESTATE

Meghan O'Neal-Rogozinski, CCIM

Commercial Broker, Owner
AXIS 360 Commercial Real Estate Specialists

309-532-1808
meghan.oneal@axis360.co
www.axis360.co





Ease of Access

Located in the heart of the country at the intersection of Interstates 74, 55 and 39, Bloomington-Normal is just two hours by car from Chicago, St. Louis, and Indianapolis. You can catch one of 10 daily trains at the Bloomington-Normal Amtrak Station in Uptown Normal for convenient access to Chicago and beyond. And for the globetrotters, Central Illinois Regional Airport offers free parking, short security lines, and direct flights to six destinations, including Chicago, Dallas, and Atlanta.

Central Illinois Regional Airport (CIRA)
cira.com

CIRA offers direct flights with nonstop service to Orlando/Sanford and Tampa/St.

Petersburg on Allegiant, nonstop seasonal service to Denver and Orlando on Frontier, and with American and Delta airlines connecting to larger airport hubs, travel throughout the country...and the world... starts at CIRA. Parking is always free.

Amtrak
amtrak.com

The Uptown Station in Normal is one of the busiest Amtrak stations in Illinois. Whether one is off to college, visiting family and friends or taking in Cubs or Cardinal game, the train makes for a relaxing and pleasant way to travel. There are many convenient travel times to choose from and connects passenger not only to major cities

in Illinois, but also to Indiana, Michigan, Missouri and Wisconsin.

Connect Transit
connect-transit.com

Connect Transit is the primary public transit service that is the cheaper, safer and cleaner way to travel around Bloomington-Normal. Eleven service routes provide access to the entire Bloomington-Normal community and Late Night and Mobility services are available by request.

Connect FLEX, an on-demand, microtransit service is intended to increase accessibility for those in underserved areas. Riders use the Connect Transit app, similar to booking an Uber or Lyft.

Joy of Shopping



From furniture to food to fashion, Bloomington-Normal offers a wide variety of shopping choices, from major retailers to unique shops and boutiques.

Downtown Bloomington and Uptown Normal specialize in local shops and personalized service. But the Twin Cities are also home to major retailers including Kohls, Target, Home-Goods, Hobby Lobby, Best Buy and many more.



All We Do Is Appliances, And We Do Them Better Than Anyone Else!

We are a family-owned appliance store based in Central Illinois. Since 1977, we have served our customers with low prices on appliance products and top notch customer service.



APPLIANCE SERVICE

If your appliance needs service, our factory-trained technicians will be there quickly to reduce down time.



PROTECTION PLAN

Our FREE 5/10 YEAR Protection Plan* can prove invaluable after the manufacturer's warranty runs out.



SPECIAL FINANCING

Don't wait to bring your new appliances home. Take more time to pay with our smart financing options.



WEEKLY SPECIALS

Our weekly specials and best deals are here to reward our customers for their support over the years!

Dick Van Dyke
Appliance World

...You Get The Whole Store

**1611 Clearwater Ave.,
Bloomington
309-827-8300
Appliance-World.com**

Uncommon Delights

Epiphany Farm Store *epiphanyfarmsestate.com*

Epiphany Farms is dedicated to creating locally-produced healthy food for their restaurants. Epiphany has recently expanded to supply local and healthy food not only for internal use, but to the community as a whole with their Farm Store. Using organic and non chemical methods, the Farm Store in Downs boasts high quality seasonal produce in a self serve atmosphere.

Funks Grove Pure Maple Sirup *funkspuremaplesirup.com*

Funks Grove has been producing pure maple sirup since 1824. Their old-fashioned sirup production is nurtured by their long line of timber connoisseurs.

The Funks settled into the farm in 1824 after Isaac Funk chose the location due to



Drink Up

It's no wonder that a university college town has seen a full-blown explosion in the brewing scene.. Our local breweries each have their own niche, and fan base. From refreshing ales, bold and hazy IPAs, refreshing sours and smooth stouts, there is something for every beer lover. More than just a tap room, these breweries offer relaxing atmospheres and often delicious food.

Our local breweries include:

- Analytical Brewing
- Casper Brewing Company
- DESTIHL Brewery
- Fiala Brothers Brewery & Beer Hall
- Keg Grove Brewing Company
- Lil Beaver Brewery
- White Oak Brewery





**ILLINOIS
ART
STATION**

ILLINOIS ART STATION

ARTISTS AGES 2-18

Providing **YOUNG ARTISTS** & families from **ALL** neighborhoods & backgrounds with **TRANSFORMATIVE** experiences in the **VISUAL ARTS** since 2018



**ART ART
ART ART
ART ART
ART ART**

101 E Vernon Ave
off Constitution Trail
Normal, IL 61761
(309) 386-1019

illinoisartstation.org
info@illinoisartstation.org
[eillartstation](https://www.facebook.com/illinoisartstation)   



FLEET FEET

WE CAN'T WAIT TO MEET YOUR FEET

Let us help you find your perfect shoes and running gear. Join us for our fun runs, training groups and events.

105 Krispy Kreme Drive
Bloomington
fleetfeetbloomington.com
309.808.3220  

SHOES, INSOLES & MORE FOR COMFORT, PAIN RELIEF & PERFORMANCE

Let's Eat Out!

The Twin Cities are a food lover's dream. Bloomington-Normal has the most restaurants per capita than almost any city in the U.S. From casual to fine dining, barbecue to bao, breakfast to dinner, you can find almost any kind of cui-

sine to tempt your tastebuds. And to keep up to date on the ever-changing restaurant scene, check out **pantagraph.com** for their Eats of the Week column, **eatlocalbn.com** and **facebook.com/bloomingtonnormal-restaurantscene**.



(309) 205-7500
4113 E. Oakland Avenue,
Bloomington
Ironcoyotepark.com





Lucca Grill



Bloom Bawarchi



Harmony Korean BBQ



Avanti's famous gondola



Scan here for a list of local restaurants.



Drink Up

It's no wonder that a university college town has seen a full-blown explosion in the brewing scene. Our local breweries each have their own niche, and fan base.

Our local breweries include:

- Analytical Brewing
- Casper Brewing Company
- DESTIHL Brewery
- Fiala Brothers Brewery & Beer Hall
- Keg Grove Brewing Company
- Lil Beaver Brewery
- White Oak Brewery



TOGETHER WE'RE BETTER!

We're here for all your local banking needs

- Personal
- Business
- Lending
- Agricultural
- Wealth Management

Bank of Pontiac

4001 General Electric Rd. | Bloomington • 309-663-6200

www.bankofpontiac.com

Member FDIC



NMLS# 652300





BERKSHIRE HATHAWAY
HOMESERVICES

CENTRAL ILLINOIS,
REALTORS®



— BUYING OR SELLING A HOME?

LET'S WORK TOGETHER!

If you are Relocating TO or FROM Central Illinois and need guidance on the best path to a successful experience the one person you can trust to look out for you is Amanda Wycoff!

#1 Realtor in McLean County

#1 Sales Team in the entire U.S. with Berkshire Hathaway 3 years running



Amanda Wycoff
REALTOR

CONTACT:

✉ AMANDA@TEAMWYCOFF.COM

📞 309.242.2647

WWW.TEAMWYCOFF.COM