

LABOR REPORT

PLATTE COUNTY

2024

Prepared By:

**Platte County
Economic Development Council**

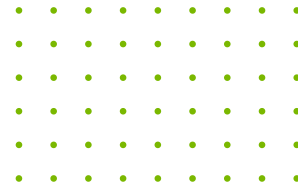
Sponsored By:



www.plattecountyedc.com

Welcome To Platte County EDC

A Message From Our Executive Director



COLLABORATION EQUALS SUCCESS

PCEDC works with local school districts, vocational schools, and higher education institutions to create training programs that align with industry needs.

Planning for the Workforce of Tomorrow

The workforce in **Platte County, Missouri** benefits from its proximity to the economic hub of Kansas City and reflects a diverse mix of industries, skills, and employment opportunities that cater to both local and regional demands.

Platte County has seen consistent population and job growth over the past few decades, driven by infrastructure development, business-friendly policies, and the expansion of residential and commercial areas. The county actively participates in workforce development programs and offers incentives to attract businesses, particularly in industries like logistics, technology, and healthcare.

Platte County Economic Development Council (PCEDC) plays a vital role in supporting workforce development to foster local economic growth. Its initiatives are designed to attract, retain, and upskill workers, benefiting both businesses and residents.

Connect with us!

Tina Chace

Executive Director, PCEDC

Platte County Labor Report

Table of Contents

This report provides a comprehensive overview of the county's workforce landscape, including key insights into demographics, employment data, commuting patterns, education, and skills.



04. Demographics

05. Employment Data

07. Top Employers

08. Commuting Patterns

09. Education & Skills

11. Platte County Workforce Alliance

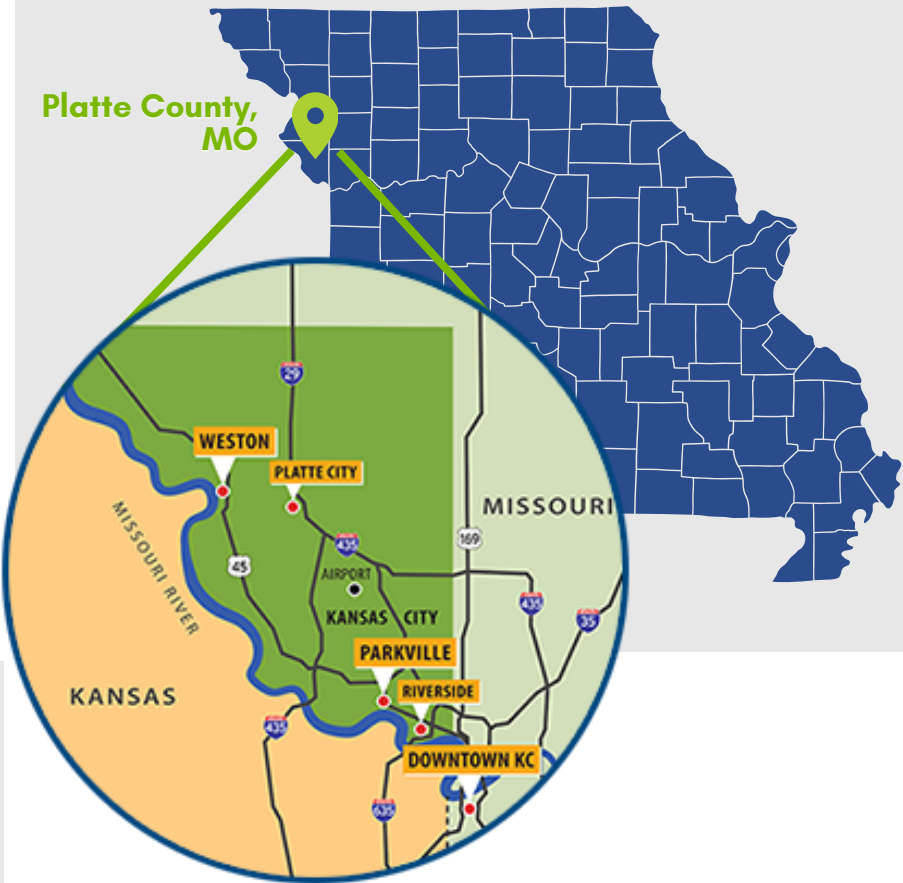
Data Sources:

JobsEQ - <https://www.chmura.com/product/jobseq>
OnTheMap Application - U.S. Census Bureau (2021)
LocationOne Tool - ESRI 2024
Community Profile - ESRI 2024
Missouri Economic Research and Information Center

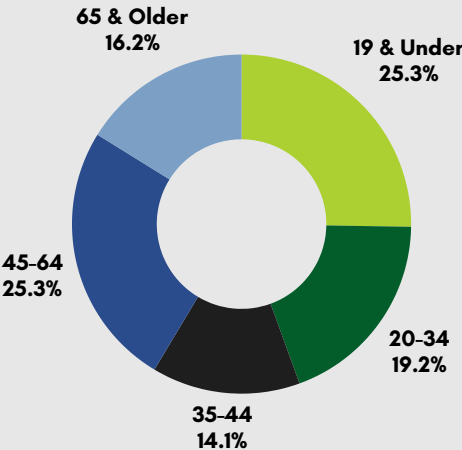
Design: Jen O'Brien

Platte County Demographics

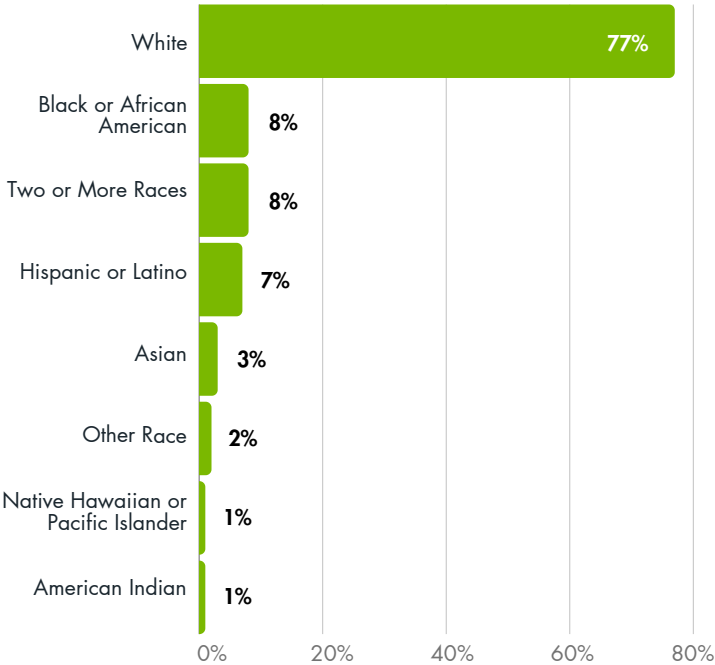
Platte County, Missouri is located in the northwestern portion of the state and is part of the Kansas City metropolitan area. As of 2024, the county has a population of 113,705 and has a total land area of 427 square miles.



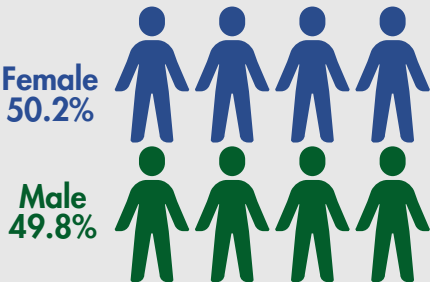
Population by Age



Population by Race/Ethnicity



Population by Gender



Platte County

Employment Overview

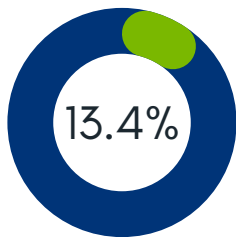


Platte County Workforce

Top Industry: Retail
Top Sector: Office and
Administrative Support
Top Employer: Park Hill
School District

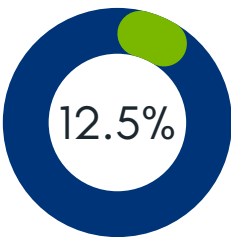
Employed:
97%

Total Workforce: 64,622
Unemployment Rate: 3%
Employed Rate: 97%



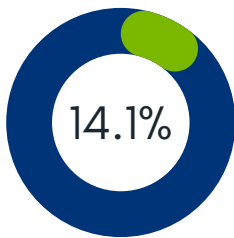
Top Industry

Retail Trade
NAICS: 44



Top Sector

Office and
Administrative Support
SOC: 43-0000

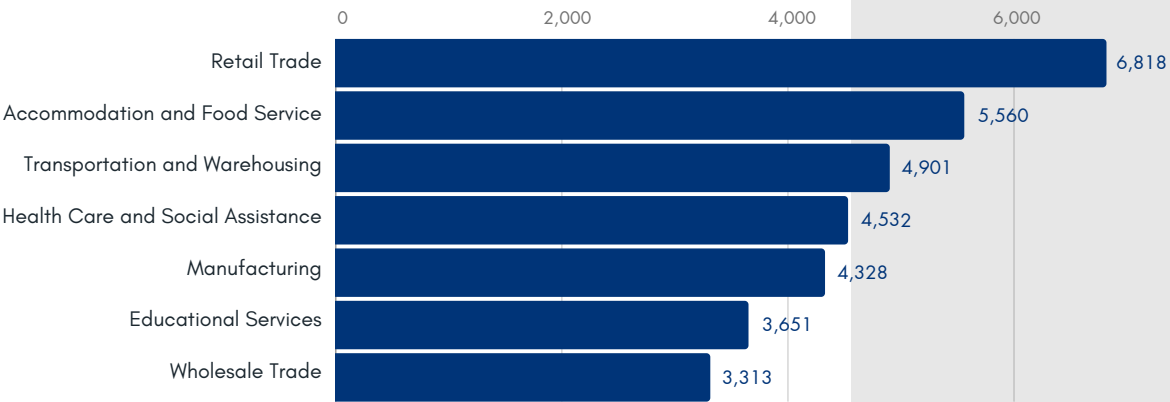


Top Employer

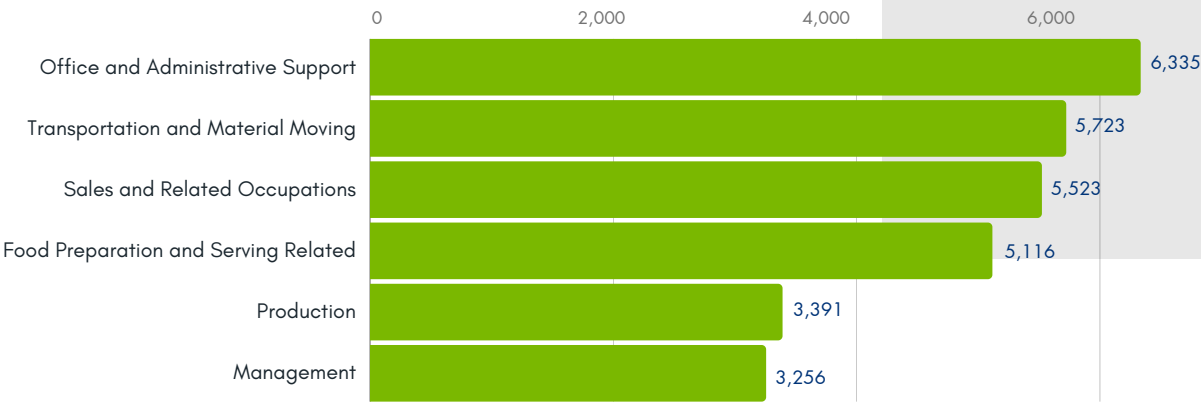
Park Hill School District
Employees: 1,868

Platte County Employment Details

Employment by Industry



Employment by Sector



Wages By County

County	Average Annual Wages	Average Hourly Wages
Jackson	\$69,603	\$33.46
Clay	\$61,669	\$29.65
Platte	\$58,220	\$27.99
Ray	\$45,274	\$21.77

Platte County Top Employers



**Park Hill
School District**
1,868



Adient
810



**Argosy Casino
Hotel & Spa**
712



**Platte County
R-3 Schools**
583



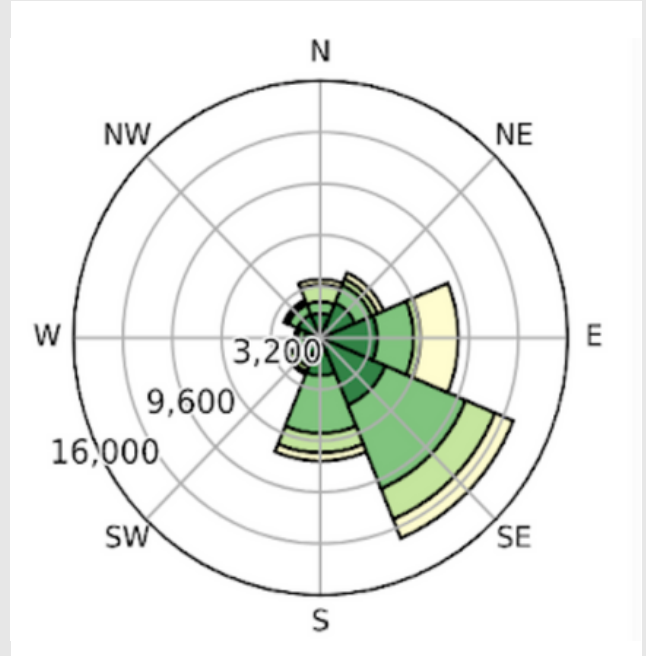
**St. Luke's
Northland Hospital**
554

Employer Name	Company Type	Number of Employees
Park Hill School District	Education	1868
Adient	Automobile supplier interiors	810
Argosy Casino Hotel & Spa	Riverboat gaming	712
Platte County R-3 Schools	Education	583
Saint Luke's Northland Hospital	Health services	554
Kansas City Aviation Department	Airport transportation	520
Park University	Education	500
Challenge Manufacturing Company	Auto parts mfg.	450
Johnson Controls (previously Tyco)	Commercial fire & security services	450
Citi Cards	Bank card collections	405
Pure Fishing, Inc.	Fishing equipment distribution center	401
TriWest Healthcare Alliance	Health care	360
Lincare Holdings, Inc.	Respiratory services	354
Velociti	Wireless tech for transportation industry	350
U.S. Farathane	Automotive supplier	326
Smithfield Farmland Foods, Inc.	Meat products mfg.	300
KC Sausage	Food manufacturing	235
CVS Health Distribution Center	Distribution Service	234
Martinrea Riverside LLC	Automotive supplier	227
Federal Express	Shipping and Mailing Service	207
Weber	Food slicing/packaging mfg.	194
Platte County, Missouri	Government	190
National Beef	Meat wholesaler	180
Engaged Companies	Software company	175
First Service Residential	Property management services	168
Eastern Airlines	Airline headquarters	165
McCormick Distilling Co., Inc.	Distilled liquors bottling & distribution	165
Woodbridge Foam	Foam car seat mfg.	165
AmerisourceBergen	Healthcare	162
Schenck Process	Industrial automation equipment mfg.	150
Premium Waters	Bottled water manufacturing	131
BMS Logistics, Inc.	Retail fulfillment services	120
Jet Midwest	Aviation parts distribution	116
DeLaval Inc.	Dairy equip. cleaner/sanitizer mfg.	112
SAF Holland	Brake products mfg.	110
Universal Account Servicing	Insurance services	90
UGA Finance	Financial services	89
Multivac	Food-packaging machinery mfg.	86
Marlen International	Industrial goods	82
Citizens Bank & Trust	Banking and financial services	73
AAON	Environmental controls mfg.	55
Great Plains Analytical Laboratory	Grain testing laboratory	35
Bradken	Steel castings mfg.	34
Liberty Mutual Group	Insurance services	25

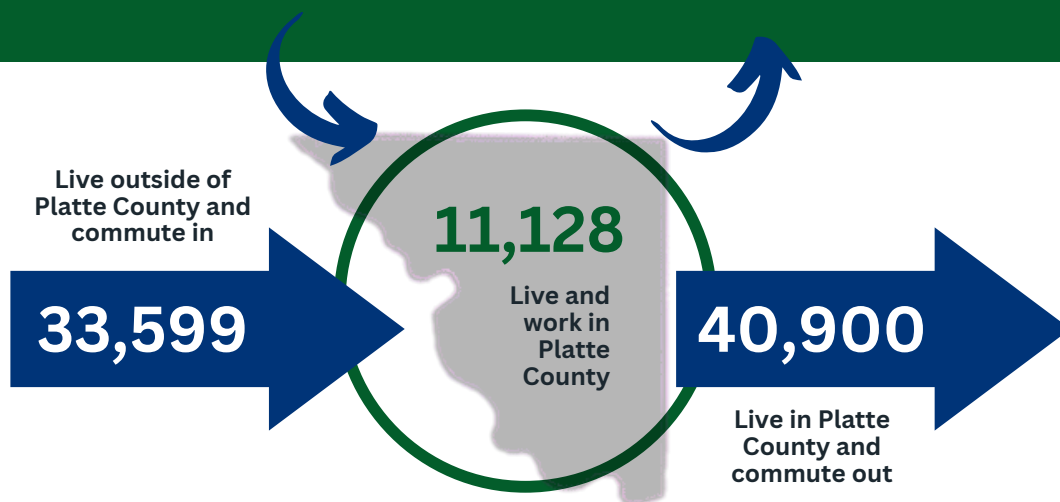
Platte County Commuting Patterns

City of residence for workers who are employed in Platte County

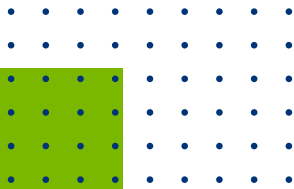
Kansas City, MO	15,437
Independence, MO	1,728
Gladstone, MO	1,513
Kansas City, KS	1,504
Liberty, MO	950
Lee's Summit, MO	806
St. Joseph, MO	788
Blue Springs, MO	773
Parkville, MO	724
Smithville, MO	710
All Other Locations	19,794



Distance and direction that residents travel to work. Nearly 75% of workers travel 25 miles or less, and a majority travel in a Southwestern direction toward downtown Kansas City, Missouri.



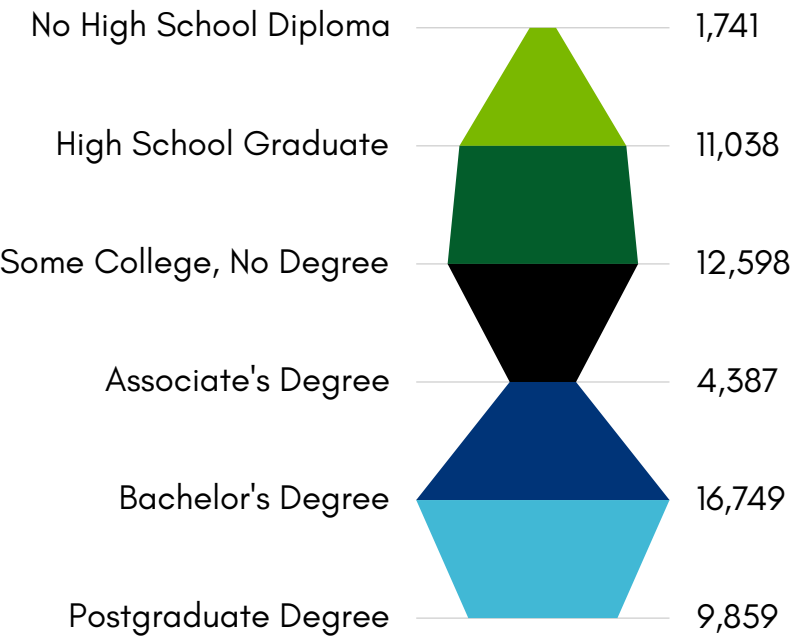
Platte County Education & Skills



Platte County is one of the most highly educated counties in the Kansas City region.

Nearly 55 percent (54.9%) of residents ages 25–64 are college graduates and 96.9% are high school graduates.

Educational Attainment



School Districts

North Platte R-1
Enrollment: 620

Park Hill
Enrollment: 11,458

Platte County R-3
Enrollment: 4,094

West Platte
Enrollment: 600

Platte County Education & Skills

Cont.

The Platte County Economic Development Council works with a number of workforce partners who offer training and educational opportunities. These programs include technical training programs for high school students, and will soon expand to skills gap training for adult learners.



Northland Career Center (NCC)

Total Enrollment: 392

Programs: Agricultural Sciences, Aviation Technology, Construction Technology, Culinary Arts, Diesel Technology, Heating/Cooling, Health Sciences, Industrial Welding, IT Professionals, Law Enforcement/CSI, Production Technologies, and Teaching Professions

Northland Workforce Development Center (NWDC)

Total Future Available Enrollment: 900

The NWDC will be a state-of-the-art career center that will double the current capacity of the NCC facility. Through a partnership with Metropolitan Community College, the facility will also be able to enroll 300 adults in afternoon and evening courses for college credit and/or advanced certificates.

Higher Education institutions located in Platte County

Park University in Parkville offers accredited online, undergraduate, and graduate degrees at campuses and military bases nationwide. It was named as the top ranked value among private colleges and universities by Parents & Colleges, an online resource for parents of college-bound students.

Additional higher education partners include:

- National American University
- Baker University (satellite campus)
- Pinnacle Career Institute
- Missouri Western State University (satellite campus)
- Western Governors University (WGU)
- Northwest Missouri State University – Kansas City
- Metropolitan Community College – Maple Woods
- William Jewell College
- University of Missouri – Kansas City (UMKC)

Platte County Workforce Alliance

About Us

The Platte County Workforce Alliance unites influential leaders from Platte County's business sector and educational institutions. Collaboratively, we commission labor studies, facilitate career exploration opportunities for students, foster relationships to elevate employer training, and promote the region as an ideal business destination.

Our 2024 Co-Chairs are:



Dr. Adrian James
Park University



Gina Sebree
SAF Holland

Our Mission & Vision

We provide collaborative connections between business and education in support of workforce development within the Platte County communities. We also provide workforce solutions for Platte County employers through collaborative partnerships to better serve students and adult learners.

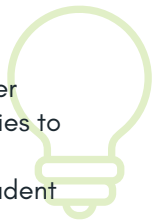


Strategic Focus Areas

College & Career Readiness

Collaborates with leaders in secondary and higher education to provide career exposure opportunities to students. Some initiatives include:

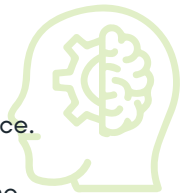
- Collect data from local schools regarding student demographics and graduation information.
- Host a CTE Career Expo to highlight Northland Career Center pathways.
- Showcase 4-year related degrees and professions.



Upskilling & Reskilling

Focused on the continuous learning and skill enhancements of adults currently in the workforce. Some initiatives include:

- Develop a list of all upskilling programs in the Kansas City metro.
- Collaborate with local universities to highlight upskill programs on Platte County EDC website.
- Create a Platte County EDC Leadership Development Course for mid-level supervisors.



Talent Recruitment & Retention

Identifies workforce needs with local businesses and helps to attract employees to the area. Some initiatives include:

- Create marketing collateral to sell Platte County as a great place to relocate.
- Facilitate a job fair with local partners, colleges, and major employers.
- Host a "Build Your Brand" bootcamp.



About Us



Empowering Businesses in Platte County

The Platte County Economic Development Council (PCEDC) was incorporated on June 20, 1988 as a nonprofit organization to promote economic development in Platte County, Missouri. It began as a partnership between public and private sectors with 61 members, but has now grown to more than 100 members from over a dozen sectors.

In an effort to provide collaborative connections between business and education in support of workforce development, the Platte County Workforce Alliance was formed. Their mission is to unite influential leaders from Platte County's business sector and educational institutions.



If you are interested in participating in the Platte County Economic Development Council or the Platte County Workforce Alliance, please reach out to us at the information below.

Contact Us:



Phone Number
816-270-2119



Email Address
tchace@plattecountyedc.com



Mailing Address
P.O. Box 14173, Parkville, MO 64152