

# Program Book & Exhibitor Listings



LEAGUE OF AMERICAN ORCHESTRAS  
77TH NATIONAL CONFERENCE  
JUNE 1-3, 2022 | LOS ANGELES, CA

#orch2022

League  
of American  
Orchestras

HOSTED BY:

**LA Phil**

GUSTAVO DUDAMEL  
MUSIC & ARTISTIC DIRECTOR

IN PARTNERSHIP WITH:

A | C | S | O

ASSOCIATION OF CALIFORNIA  
SYMPHONY ORCHESTRAS



THE CLIBURN



SIXTEENTH  
**VAN CLIBURN**  
INTERNATIONAL  
PIANO  
COMPETITION

**JUNE 2-18, 2022**  
FORT WORTH, TEXAS USA

WATCH THE ENTIRE COMPETITION LIVE **CLIBURN.ORG**

**NOW BOOKING 2022 CLIBURN WINNERS**  
**SANDRA DOAN** | [SDOAN@CLIBURN.ORG](mailto:SDOAN@CLIBURN.ORG) | 817.738.6536



# Welcome!

**LEAGUE OF AMERICAN ORCHESTRAS  
77TH NATIONAL CONFERENCE  
JUNE 1-3, 2022 | LOS ANGELES, CA**

## League of American Orchestras

**HOSTED BY:**

**LA Phil**  
GUSTAVO DUDAMEL  
MUSIC & ARTISTIC DIRECTOR

**IN PARTNERSHIP WITH:**

A | C | S | O

ASSOCIATION OF CALIFORNIA  
SYMPHONY ORCHESTRAS

Sponsors and Funders .....	3
Exhibitors .....	4
Program Details.....	18
Key Info .....	31
Maps .....	33

*#orch2022*



Educating the next generation of

# ARTS LEADERS

M.S. Arts Administration | Online Advanced Certificate

[lemoyne.edu/makingartwork](http://lemoyne.edu/makingartwork)

**IN ATTENDANCE AT THE CONFERENCE:**



Faculty member  
**Travis Newton**

Author of  
*Orchestra Management Handbook*

To connect with Travis at the  
 League of American Orchestras  
 conference, text (315) 300-8424.



**LE MOYNE**  
 Greatness meets Goodness®

# Thank You

---

## **The League of American Orchestras is grateful to its sponsors and funders for making this Conference possible.**

Acceptd	Mellon Foundation
AccountingWare	National Endowment for the Arts
Akustiks	Nave Strategies
Arts Consulting Group	Opus 3 Artists
Bennett Direct	Paul M. Angell Family Foundation
Boomerang Carnets   CIB	RSC Fundraising
Broadcast Music, Inc. (BMI)	Schuler Shook
Capacity Interactive	Sciolino Artists Management
Colbert Artists Management	SD&A Teleservices, Inc.
The Aaron Copland Fund for Music	Spektrix
DCM, Inc.	TALASKE  Sound Thinking
easy-connect	TCG Entertainment
Fisher Dachs Associates	The Cliburn
HGA Architects	The Stander Group
Howard Gilman Foundation	Threshold Acoustics
IMG Artists	TRG Arts
InstantEncore	VATIC
Kontrapunktus Baroque Chamber Orchestra	Virginia B Toulmin Foundation
Los Angeles Philharmonic	The Wallace Foundation
	Young Concert Artists

## **ACSO's partnership in this Conference has generously been supported by the following sponsors, funders, and donors:**

Alice Sauro	Loribeth Gregory-Beck
Artdynamix	Los Angeles County Department of Arts & Culture
Arts Management Systems	Mieko Hatano
Broadcast Music, Inc. (BMI)	National Endowment for The Arts
California Arts Council	Nora Brady
Chelsea Chambers	RSC Fundraising
Clarence E. Heller Charitable Foundation	Scott Vandrick
Dean McVay	Sharon Simpson
Donna Williams	Spektrix
Giuliano Kornberg	Steve Friedlander
Jamei Haswell	The Abbott Wealth Management Group at Morgan Stanley
Jeri Crawford	Viking Cruises
John Wineglass	
Kathryn R Martin   Next Chapter Coach	



# EXHIBITORS

## Acoustics

---

### **Acentech | Studio A | Table D-14**

33 Moulton Street | Cambridge, MA 02138  
t 617 499 8000 | [acentech.com](http://acentech.com)

**Ioana Pieleanu**, *Acoustics Consultant*  
**Jonah Sacks**, *Acoustics Consultant*

Acoustics and audiovisual system for performing arts spaces. Professional, community, and educational performing arts all deserve excellent sounding spaces and systems.

### **Akustiks, LLC | Booth B-30**

93 North Main Street, Suite 2 | Norwalk, CT 06854  
t 203 299 1904 | [akustiks.com](http://akustiks.com)

**Paul Scarbrough**, *Principal*

Akustiks specializes in spaces for music. Current projects include the transformation of David Geffen Hall for the New York Philharmonic and the Jacobs Music Center for the San Diego Symphony.

### **Charcoalblue LLC | D-10**

150 West 28th Street Suite 1504 | New York, NY 10001  
t 212 645 0790 | [charcoalblue.com](http://charcoalblue.com)

**Byron Harrison**, *Managing Director, Acoustics*

Charcoalblue provides auditorium, acoustics, audio / video, stagelighting, and stage engineering design services on performance, rehearsal, and broadcast spaces for a wide range of creative and arts industry organizations.

### **TALASKE sound thinking | Booth B-03**

1033 South Boulevard Suite 101 | Oak Park, IL 60302  
t 708 524 2800 | [talaske.com](http://talaske.com)

**Richard Talaske**, *President & Principal Acoustic Consultant*

The team at TALASKE is passionate about designing environments that sound as good as they look. We understand that the work we do can have a significant impact on the success of a facility. It's a big responsibility and we take it seriously.

### **Threshold Acoustics LLC | Booth B-11**

141 West Jackson Boulevard Suite 2080 | Chicago, IL 60604  
t 312 386 1400 | [thresholdacoustics.com](http://thresholdacoustics.com)

**Carl Giegold**, *Partner*  
**Laurie Kamper**, *Principal*  
**Robin Glosemeyer Petrone**, *Senior Consultant*  
**Scott Pfeiffer**, *Principal*

Threshold Acoustic and Audio/Video consultants design places of gathering to learn, share wisdom, and pass along culture. Our diverse backgrounds in architectural acoustics, physics, mathematics, musical theatre, music performance, art, production, and engineering shape our approach to sound.



## Architects | Engineers

---

### **HGA Architects & Engineers | Booth B-19** t. 612 758 4000 | [hga.com](http://hga.com)

**John Frane, AIA, LEED AP BD+C** | *Design Principal*  
**Jim Moore, AIA, LEED AP BD+C** | *Project Architect*

HGA is nationally recognized as a leading cultural and performing arts design firm. Our multidisciplinary arts studio specializes in the planning and design of performing arts education, practice, and performance facilities. We understand the unique technical requirements of these complex facilities, as well as the optimal conditions for arts learning and performance.

## Artist Management

---

### **Colbert Artists Management Inc. | Table D-07** 478 Washington Street, No. 302 | Newark, NJ 10001 t 212 757 0782 | [colbertartists.com](http://colbertartists.com)

**Martha Bonta**, *Vice President*  
**Amy Carson-Dwyer**, *Senior Booking Manager*  
**Lee A. Prinz**, *President & CEO*

Colbert Artists Management, Inc represents a select roster of international instrumentalists, conductors, vocalists and chamber ensembles.

### **Concert Artists Guild | Booth B-35** 135 East 57th Street 7th Floor | New York, NY 10022 t 212 333 5200 | [concertartists.org](http://concertartists.org)

**Tim Mar**, *Vice President, Artist Management and Innovation*  
**Chris Williams**, *Senior Vice President, Artist Management and Partnerships*

Concert Artists Guild empowers musicians and launches careers that are sustainable, unique and relevant. Since 1951, CAG has helped more than 500 young musicians launch impactful careers.

### **Dean Artists Management | Table D-04** 500A Bloor St. West | Toronto, ON M5S 143 t 416 969 7300 | [deanartists.com](http://deanartists.com)

**Henry Ingram**, *Director, Concerts Division*

Building on more than three decades in international arts management, Dean Artists remains competitive and attuned to new directions in orchestral and operatic environments and to the artistic goals of our colleagues and clients.

### **Dispeker Artists, Inc. | Booth B-34** 195 Chrystie Street Suite 809J | New York, NY 10002 t 212 421 7676 | [dispeker.com](http://dispeker.com)

**Charlotte Merz**, *Booking Representative*  
**Emmy Tu**, *Director*

Dispeker Artists is a leading classical music artist management firm based in New York City.



## EXHIBITORS

### **Frank Salomon Associates, Inc. | Table D-05**

16 West 36th Street Suite 1205 | New York, NY 10018  
t 212 581 5197 | [franksalomon.com](http://franksalomon.com)

**Barrie Steinberg**, *President*

Frank Salomon Associates, Inc. is committed to preserving and advancing the classical music art form through creative management and partnerships between artists, management and presenters. For more than 50 years, we have represented some of the world's most original and influential artists. We continue that tradition today with a roster of legendary performers and rising stars.

### **IMG Artists | Booth B-08**

7 West 54th Street | New York, NY 10019  
t 212 994 3500 | [imgartists.com](http://imgartists.com)

**Stephanie Carlesimo**, *Vice President, Artist Manager*

**Romana Jaroff**, *Senior VP, Director of Sales, Booking Manager/Vocal*

**Linda Petrikova**, *Artist Manager*

IMG Artists is a global leader in performing arts management. Our team across three continents provides expert career development and dedicated support to our roster of celebrated artists and projects.

### **Jonathan Wentworth Associates Ltd. | Table D-03**

6118 40th Avenue | Hyattsville, MD 20781  
t 301 277 8205 | [jwentworth.com](http://jwentworth.com)

**Martha Woods**, *President*

Representing innovative conductors Michael Butterman, John Devlin, Robert Franz; Grammy-winning guitarist Jason Vieaux; cellists Colin Carr, Clancy Newman, violinists Eunice Kim, Mark Kaplan; pianists Sean Chen, Christopher Taylor, and more.

### **Kirschner Creative Artists | Booth B-26**

10650 Reagan St Suite 601 | Los Alamitos, CA 90720  
t 562 429 3732 | [kcartists.com](http://kcartists.com)

**Owen Kirschner**, *President*

ENTERTAINMENT - ENGAGEMENT - EDUCATION - DIVERSITY - EQUITY

For your "Orchestra Pops" programming consideration we offer a number of choices: Giada Valenti, Anna Maria Mendieta (Harp), Tango Del Cielo, Michael Lington's "A Song For You", The Rodney Marsalis Philadelphia Big Brass, Caesar Sing, Nat "King" Cole, and more.

### **Kirshbaum Associates Inc. | Table D-01**

307 Seventh Avenue, Suite 506 | New York, NY 10001  
t 347 623 5244 | [KirshbaumAssociates.com](http://KirshbaumAssociates.com)

**Jason M. Belz**, *Vice President, Director of Booking and Artist Manager*

**Shirley A. Kirshbaum**, *President*

Kirshbaum Associates Inc., located in Manhattan's Chelsea neighborhood, has built an enviable reputation as a highly personalized Artist Management and Public Relations office that represents a select and distinguished roster of artists. The company specializes in press campaigns and programs for the arts, particularly those supporting classical musicians, ensembles, and institutions, and in managing the robust international careers for many of today's most acclaimed classical musicians.





### **Latitude45Arts | Table D-02**

107, boul. St-Joseph West | Montreal (Quebec) | Canada H2T 2P7  
 t. 514 241 1363 | [latitude45arts.com](http://latitude45arts.com)

**Barbara Scales**, *President*

Latitude45 Arts, founded in 1981 is a Canadian management company and agency representing composers, conductors, instrumental ensembles and soloists. We work internationally with artists from several continents.

### **MKI Artists, Inc. | Table D-11**

One Lawson Lane Suite 320 | Burlington, VT 05401  
 t 802 658 2592 | [mkiartists.com](http://mkiartists.com)

**John Zion**, *Managing Director*

MKI Artists is a full-service artist representation agency managing classical musicians. Helmed by John Zion, our experienced team directs the careers of a select group of artists. MKI Artists seeks to support classical music by energetically and empathetically representing a select roster of the world's best musicians. We cultivate long-term personal relationships with our artists and performing arts organizations throughout the world to help achieve artistic, professional, and personal success. We want to ensure that MKI Artists thrives as a business so that classical music remains a vital art form, so its practitioners receive the support they need, and so this music will be enjoyed by an always growing audience.

### **Opus 3 Artists | Booths B-31 and B-32**

348 West 57th Street, Suite 282 | New York, NY 10019  
 t 212 584 7500 | [opus3artists.com](http://opus3artists.com)

**Robert Berretta**, *Managing Director*

**Stephanie Carlesimo**, *Vice President; Attractions & Pops Booking*

**Tom Cunningham**, *Associate Manager*

**Benjamin Maimin**, *Chief Operating Officer; Director of Strategic Initiatives*

**Scott Mello**, *Vice President; Manager, Artists & Attractions*

**Julijana Mijalkovic**, *Associate Manager*

**Matthew Oberstein**, *Vice President; Manager, Artists & Attractions*

**Sarah Pelch**, *Vice President; Director, Classical Booking*

**Brooke Scholl**, *Booking Agent*

**Dorothy Shrader**, *Booking Agent*

Opus 3 Artists is a leading company managing the careers and touring activities of many of the world's greatest performing artists and ensembles. The focus of Opus 3 Artists' roster includes instrumentalists, vocalists, conductors, composers, chamber music ensembles and touring chamber and symphony orchestras, as well as dance and theater companies, jazz, world and new music ensembles and artists. True to the Hurok legacy, Opus 3 Artists continues to be a leader in discovering, nurturing and developing young artists by helping to establish the network and foundation for their art and performing careers. The company is proud of the many impressive examples of this long-term commitment to young artists who have become major figures in the international cultural scene.



## EXHIBITORS

### **Sciolino Artist Management, LLC | Booth B-33**

230 Central Park West Suite 14J | New York, NY 10024  
t 212 721 9975 | [samnyc.us](http://samnyc.us)

**Katie Masterson**, *Booking & Operations Manager*  
**Marianne Sciolino**, *Executive Director*

Sciolino Artist Management (SAM) is a New York-based artist management firm, founded in 2006 and dedicated to finding creative programming solutions for orchestras, presenters, and festivals. SAM artists perform at the highest artistic level while advancing the educational and audience engagement goals of presenting organizations.

### **The Stander Group | Booth B-17**

4533 Van Nuys Boulevard, Unit 401 | Sherman Oaks, CA 91403-2950  
t 818 905 7000 | [scottstander.com](http://scottstander.com)

**Jackie Stander**, *Agent*  
**Scott Stander**, *Agent*

With over 30 years of excellence, The Stander Group has amazing, fully charted shows for orchestras. Keith Lockhart, Boston Pops, calls them: "Visually Spectacular, with great dancers and voices, and excellent orchestral arrangements."

### **TCG Entertainment | Booth B-13**

414 Woodlake Drive | Allen, TX 75013  
t 972 727 7779 | [tcgent.com](http://tcgent.com)

**Stephen Cook**, *President*  
**James Davidson**, *Director of Bookings*  
**Addison McKissack**, *Marketing Coordinator*

TCG Entertainment is the leading producer of symphonic shows in the industry. We produce over 20 symphonic shows of all genres including Cirque Musica, Rocky in Concert, Symphonic Rock, Hip Hop, and more.

### **Young Concert Artists | Booth B-28**

1776 Broadway Suite 1500 | New York, NY 10019  
t 212 307 6657 | [yca.org](http://yca.org)

**Christina Baker**, *Artist Manager and Booking Representative*  
**Mic Herring**, *Associate Artist Manager*  
**Daniel Kellogg**, *President*

Young Concert Artists has been dedicated to discovering and launching the careers of exceptional young musicians for 60 years. Each year through a rigorous audition process, Young Concert Artists chooses a new group of stunning young musicians to add to its roster with the promise of debuts in both New York City and Washington, DC, followed by at least three years of career management. This includes providing performance opportunities, promotional and marketing services, travel arrangements, educational residency experience, and extensive professional development. These young people are the future of classical music, and we invest in their careers so they may spend a lifetime bringing the gift of music to audiences around the world.



## Competitions

---

### **American Pianists Association | Booth B-21**

4603 Clarendon Road Suite 030 | Indianapolis, IN 46208

t 317 940 9945 | [americanpianists.org](http://americanpianists.org)

**Joanne Bennett**, *General Manager*

The mission of the American Pianists Association is to discover, promote and advance the careers of young, American world-class jazz and classical pianists. Winners of the American Pianists Awards receive career support valued over \$200,000.

### **The Cliburn | Booth B-25**

201 Main Street, Suite 100 | Fort Worth, TX 76102

t 817 738 6536 | [cliburn.org](http://cliburn.org)

Widely considered one of the preeminent international music contests, the Van Cliburn International Piano Competition exists to share excellent classical music with the largest international audience possible and to launch the careers of its winners every four years. The world's top 18- to 30-year-old pianists compete for gold in front of a live audience in Fort Worth, Texas, as well as a global online viewership of over 10 million. The sixteenth edition of the Cliburn Competition will take place June 2–18, 2022 in Fort Worth, Texas at Van Cliburn Concert Hall at TCU (Preliminary and Quarterfinal Rounds) and Bass Performance Hall (Semifinal and Final Rounds).

## Computers/Software

---

### **Acceptd | Booth B-18**

Togetherwork LLC, 2 Ravinia Drive, Suite 500 | Atlanta, GA 30326

t. 888 725 2122 | [getacceptd.com](http://getacceptd.com)

**Jerry Tsai**, *President*

**Eric Frisch**, *Account Relations Manager*

**Ben Miller-Jones**, *Sales Specialist*

Acceptd is the premier application and audition software designed exclusively for arts organizations. Whether your auditions are in-person, virtual, or hybrid, Acceptd streamlines the audition experience for musicians and organizations.

### **AccountingWare | B-20**

5225 South Loop 289, Suite 207 | Lubbock, TX 79424

t. 800 354 7152 | [accountingware.com](http://accountingware.com)

**Marvin Crossnoe**, *President*

**Ernest Trujillo**, *Vice President*

Founded in 1977, AccountingWare is a software development firm serving the accounting community. We remain committed to our client's needs by providing rock-solid software and world-class support throughout the prevailing IT architectures, changes in accounting standards, and ever-increasing governmental reporting requirements. AccountingWare is the developer of HYPERLINK "https://accountingware.com/activityhd" ActivityHD, a flexible and comprehensive ERP system allowing the sophisticated accounting department to manage the enterprise. ActivityHD includes ActivGL, ActivAP, ActivPO, ActivAR, ActivBR, ActivPR, and ActivFA.



## EXHIBITORS

### **easy-connect | Booth B-10**

Mariahilferstraße 109/20 | A-1060 Wien Austria  
t +43 1 361 30 30 | [easy-connect.io](http://easy-connect.io)

**Dr. Wolfgang Graf**, *Co-Founder and CEO*

**Sophie Garzon-Lapierre**, *Head of Business Development & Marketing*

We work with Performing Arts Organizations to digitize their sales and communications channels and strengthen their customer retention & audience development strategy. We offer personalized UX and customized, curated content strategies to help your organization increase visibility and audience appeal. easy-connect has real-time interfaces for existing ticketing systems and therefore enables a seamless integration and provides organizations with all available customer data and analytics.

## Consulting

---

### **Arts Consulting Group | Booth B-02**

292 Newbury Street, Suite 315 | Boston, MA 02115  
t 888 234 4236 | [artsconsulting.com](http://artsconsulting.com)

**Nan Keeton**, *Senior Vice President*

**Nagham Wehbe**, *Associate Vice President*

Arts Consulting Group is the leading provider of hands-on leadership transitions, revenue enhancement, IDEAS and planning and capacity building services for the arts and culture industry in the US and Canada.

### **Nave Strategies | Booth B-09**

525 Royal Pkwy #292441 | Nashville, TN 37229  
t 260 416 2050 | [navestrategies.com](http://navestrategies.com)

**Paul Cook**, *Consultant*

**J.L. Nave III**, *Principal*

We provide practical advice and services for the arts industry. Whether it is coaching, customized timesavers, or strategic planning, our services will help you lead with confidence and propel your organization forward.

## Corporation

---

### **Carnegie Hall's Weill Music Institute | Booth B-23**

881 Seventh Avenue | New York, NY 10019  
t 212 903 9670 | [carnegiehall.org/Education](http://carnegiehall.org/Education)

**Angelica Tran**, *Manager, Learning & Engagement Programs*

Carnegie Hall's Weill Music Institute (WMI) creates wide-reaching education and social impact programs that play a central role in fulfilling the Hall's mission of making great music accessible to the widest audience possible.



## Dynamic Pricing

---

### **Digonex Dynamic Pricing | Booth B-07**

133 W. Market St., #216 | Indianapolis, IN 46204

t 469 371 3793 | [digonex.com](http://digonex.com)

**Harry Tomasides**, *Chief Revenue Officer*

Global leader in dynamic pricing. Digonex automates your dynamic pricing. Our team of PhD economists build a customized pricing algorithm. Price recommendations presented to you in SEATS, our web-based portal. Partners with Tessitura, AudienceView, Spektrix.

### **VATIC | Booth B-16**

7306 Walling Lane | Dallas, TX 75231

t 469 688 0162 | [vatic.tech](http://vatic.tech)

**Sean Kelly**, *Founder*

Vatic's dynamic pricing software helps you find the right price for each performance. With both fully automated and hybrid solutions, Vatic's software works with virtually any ticketing CRM.

## Financial Services

---

### **The Abbott Wealth Management Group at Morgan Stanley | Table D-9**

1478 Stone Point Dr, Suite 500 | Roseville, CA 95661

t 916 797 7760 | [advisor.morganstanley.com/the-abbott-wealth-management-group](http://advisor.morganstanley.com/the-abbott-wealth-management-group)

**James Matthew Bopp**, *First Vice President/Financial Advisor/Portfolio Management Director*

**Brandon Montalvo MBA, CEPA**, *Financial Advisor/Financial Planning Specialist*

Non-Profits and Foundations work with us to define investment strategies and align cashflows to support and deliver their organizations' mission and values, as well as to achieve sustainable goals and objectives.

## Fundraising

---

### **RSC Fundraising | Booth B-06**

580 North Peterman Road | Greenwood, IN 46142

t 317 300 4443 | [rscfundraising.com](http://rscfundraising.com)

**Catherine Heitz New**, *Executive Vice President*

**Nicki Inman**, *Direct Response and Project Consultant*

**Bob Swaney**, *Founder & Chief Executive Officer*

RSC is a national leader in providing fundraising consulting and coaching services for arts & cultural organizations. Our results-driven approach includes endowment / capital / legacy gift campaigns, along with annual fund, strategic planning and board development solutions.



# EXHIBITORS

## Marketing Services

---

### **Activity Stream | Booth B-39**

1000 Lafayette Boulevard, Suite 1100 | Bridgeport, CT 06604

t. 203 530 0222 | [activitystream.com](http://activitystream.com)

**Robert Friend**, *Vice President, Nonprofit Growth*

Activity Stream is a marketing intelligence platform built exclusively for live entertainment that delivers real-time dashboards to Understand, Identify and Activate your audiences. We make data work for you!

### **Capacity Interactive | Booth B-05**

1239 Broadway Ste 1103 | New York, NY 10001

t 646 559 1341 | [capacityinteractive.com](http://capacityinteractive.com)

**Priya Iyer**, *President*

Capacity Interactive (CI) is the premier digital marketing consulting firm for culture and the arts. Founded in 2008, Capacity Interactive partners with leading arts and cultural organizations to help them build audiences, engage community, and market smarter.

### **Dream Warrior Group | Studio A | Table D-8**

19725 Sherman Way #305 | Los Angeles, CA 91306

t 818 610 3316 | [artdynamix.com](http://artdynamix.com) and [dreamwarrior.com](http://dreamwarrior.com)

**LaMae Weber**, *CEO*

Dream Warrior Group is a full-service digital agency specializing in performing arts. ARTdynamix by DWG is the only API-first CMS born from more than 20 years of experience in the arts. It's a robust, full-featured website platform with flexible themes and modules - all of it built specifically for the arts.

### **Sametz Blackstone Associates | Table D-06**

40 West Newton Street | Boston, MA 02118

t 617 596 2998 | [sаметz.com](http://sаметz.com)

**Sarah Manoog**, *Director, Strategic Engagement*

Brand-focused strategy, design, content, and web consultancy helping performing arts organizations evolve and thrive for over 40 years.

### **Spektrix | Booth B-29**

213 West 35th Street, Suite 400 | New York, NY 10001

t 646 569 9097 | [spektrix.com](http://spektrix.com)

**Scotty Arnold**, *Account Executive*

**Karen Elizondo**, *Senior Account Executive*

**Bethany Nothstein**, *Sector Strategy & Community Manager*

Spektrix is your cloud-based ticketing, marketing, and fundraising CRM solution, working with 550+ organizations across the US, Canada, Ireland, and the UK to grow revenue and extend their reach with a 360° view of their customers.



## Music Publishers

---

### **Boosey & Hawkes, Inc. | Table D-13**

250 West 57th St, Floor 6 | New York, NY 10107

t 212 358 5300 | [boosey.com](http://boosey.com)

**Elizabeth Blaufox**, *Director of Promotion*

Boosey & Hawkes is the world's leading classical music publisher, formed from two historic companies and shaping the music of the future.

### **Concord Theatricals | Table D-12**

250 West 57th Street, 6th Floor | New York, NY 10107

t 212 699 6568 | [concordtheatricals.com](http://concordtheatricals.com)

**Robin Pomatto**, *Senior Manager, Concert Licensing*

Concord Theatricals is a licensing, publishing, recording, and producing company comprising R&H Theatricals, Samuel French, Tams-Witmark and The Andrew Lloyd Webber Collection, plus dozens of new signings each year.

## Performing Ensembles

---

### **Kontrapunktus Baroque Chamber Orchestra | Booth B-04**

PO Box 2959 | Seal Beach, CA 90740

t 310 382 0300 | [kontrapunktus.com](http://kontrapunktus.com)

**Raymond D. Jacobs**, *Executive Director*

**John Schwerbel**, *Consultant*

300 Years in the Making and Counting, Kontrapunktus is a Baroque chamber orchestra for the modern age introducing the art of classical music to a new generational audience.

## Production Companies

---

### **group5productions | Table D-15**

110 West 96th Street, Suite 12C | New York, NY 10025

t 1 203 981 5988 | [group5productions.com](http://group5productions.com)

**Debbie Gravitte**, *President*

group5productions is attending for the first time and we are proud to present the BEST in POPS performers and performances. Our fully licensed shows include Broadway's Bad Boys, A Toast to Steve and Eydie, The Kings of Soul and Swing, To Whitney, With Love, among others.

### **KV 265 - Science & Symphony Films | Booth B-27**

320 Old Hickory Blvd Apt 3000 | Nashville, TN 37221

t 1 630 886 6443 | [KV265.org](http://KV265.org)

**Anne Barlow**, *Director of Development*

**Jose Francisco Salgado**, *Executive Director*

KV 265 is a nonprofit organization that communicates science through music and the visual arts with its original series of Science & Symphony films.



# EXHIBITORS

## Public Relations

---

### **Jensen Artists | Table D-16**

9 North Wodenethe Drive | New York, NY 12508

t 646 536 7864 | [jensenartists.com](http://jensenartists.com)

**Christina Jensen**, *President*

**Gina Meola**, *Booking Manager*

Jensen Artists is dedicated to developing the careers and telling the stories of today's most vibrant classical musicians.

## Telemarketing

---

### **DCM Inc. | Booth B-15**

PO Box 4707 | Sunnyside, NY 10018

t 212 279 4888 x 5026 | [dcmtn.com](http://dcmtn.com)

**William Lester**, *Vice President of New Business & Marketing*

For 25 years, DCM has provided customized telemarketing and telefunding campaigns to the orchestra field. Our clients, large and small, get excellent service, thought partnership, and results.

## Theater Design

---

### **Fisher Dachs Associates | Booth B-14**

22 West 19 Street 6th Floor | New York, NY 10011

t 212 691 3020 | [fda-online.com](http://fda-online.com)

**Robert Campbell**, *Associate Principal*

The consultants at Fisher Dachs have a great appreciation for, and a sophisticated understanding of concert halls, with over 50 completed venues for symphonies worldwide. FDA is excited for the opportunity to meet in person this year and to hear live music again.

### **Schuler Shook | Booth B-36**

219 Main Street SE, Suite 200 | Minneapolis, MN 55414

t 212 439 5650 | [schulershook.com](http://schulershook.com)

**Michael DiBlasi**, *Partner*

Schuler Shook is an internationally recognized theatre planning firm with extensive experience planning symphonic halls, recital rooms, rehearsal spaces, and performing arts centers. We provide programming, venue planning, and system design services.





## Travel

---

### **Boomerang Carnets | CIB | Booth B-01**

18 East Dundee Road Building 4 Suite 110 | Barrington, IL 60010

t **1 800 282 2900** | [ATACarnet.com](http://ATACarnet.com)

**Anva Nuguid**, *Marketing Assistant*

**Curt E. Wilson**, *President & CEO*

We are a longstanding League member. Our dedication to the industry includes understanding international touring and the unique relationship between instruments and orchestras. We issue ATA Carnets for savings and security.

### **Nine Muses Travel | Booth B-22**

1080 Bergen Street #201 | Brooklyn, NY 11216

t **347 787 0990** | [ninemusestravel.com](http://ninemusestravel.com)

**Danielle Dybiec**, *President*

Nine Muses Travel is a boutique travel agency custom designing journeys that inspire artists, arts lovers, and shared interest groups seeking authentic, local arts and culture, history, and culinary experiences.

# Who is Rose?

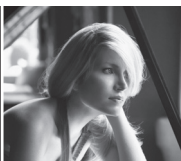


[roseofsonora.com](http://roseofsonora.com)





**SCIOLINO  
ARTIST  
MANAGEMENT**



**CREATIVE PROGRAMMING SOLUTIONS** FOR ORCHESTRAS,  
PRESENTERS, AND FESTIVALS, FEATURING BOTH SOLOISTS AND ENSEMBLES.



**Marianne Sciolino,**  
*CEO & Founder*  
marianne@samnyc.us  
646.391.5517



**Katie Masterson,**  
*Booking & Operations Mgr.*  
katie@samnyc.us  
732.379.1717

SCAN HERE TO  
EXPLORE OUR  
FULL ROSTER.



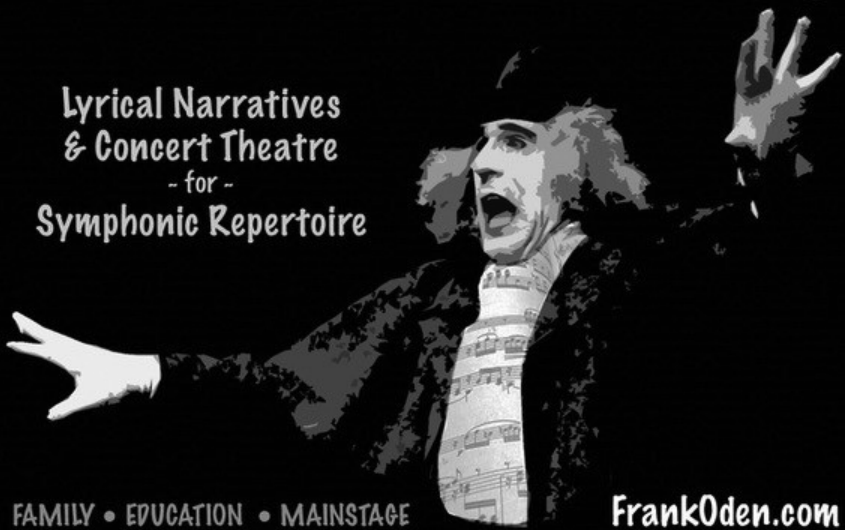
230 Central Park West  
Suite 14-J  
New York, NY 10024

[www.samnyc.us](http://www.samnyc.us)

# FRANKODEN

PERFORMANCE POETRY IN CONCERT

Lyrical Narratives  
& Concert Theatre  
- for -  
Symphonic Repertoire



FAMILY • EDUCATION • MAINSTAGE

[FrankOden.com](http://FrankOden.com)



# PROGRAM

Tuesday, May 31, 2022

---

*Program subject to change. As of program book print date (5/16/2022), masking is required at the Judith and Thomas L. Beckmen YOLA Center, Zipper Hall, and Walt Disney Concert Hall.*

**1:00pm – 7:30pm**

**EdCE/YOD Pre-Conference Meeting (\$)**

*Beckmen YOLA Center, Inglewood, CA*

**1:30pm – 7:30pm**

**Tours of SoFi Stadium and Beckmen YOLA Center (\$)**

*SoFi Stadium and Beckmen YOLA Center, Inglewood, CA*

**2:00pm – 6:00pm**

**Conference Registration**

*Westin Bonaventure Hotel and Suites, California Ballroom, Level 2*

**5:00pm – 7:30pm**

**An Evening at the Beckmen YOLA Center (\$)**

*Beckmen YOLA Center, Inglewood, CA*

Explore YOLA (Youth Orchestra Los Angeles)'s first permanent, purpose-built facility, opened in fall 2021: The Judith and Thomas L. Beckmen YOLA Center at Inglewood, designed by architect Frank Gehry. Enjoy a taste of LA's food truck culture, hear from the architect himself in a Q&A, and get a behind-the-scenes look at YOLA's rehearsal process.

**5:00pm – 6:30pm: Tours of the Center and food truck dinner**

**6:30pm – 7:00pm: Q&A with Frank Gehry**

**7:00pm – 7:30pm: YOLA Rehearsal Concert**

*This event is included in both the **EdCE/YOD Pre-Conference Meeting** and **Tours of SoFi Stadium and Beckmen YOLA Center Pre-Conference** events. Those who are not participating in the **EdCE/YOD Pre-Conference Meeting** or **Tours of SoFi Stadium and Beckmen YOLA Center** can register for this event separately.*

**7:00pm – 9:00pm**

**Volunteer Dine-Arounds (\$)**

*Various Locations (Pre-registration required)*



Wednesday, June 1, 2022

Program subject to change. As of program book print date (5/16/2022), masking is required at the Judith and Thomas L. Beckmen YOLA Center, Zipper Hall, and Walt Disney Concert Hall.

7:00am – 4:15pm

**Conference Registration**

Westin Bonaventure Hotel and Suites, California Ballroom, Level 2

8:00am – 12:00pm

**Pre-Conference Seminars**

**Conscious Leadership in an Age of Uncertainty: Regaining Resilience, Patience, and Strategic Thinking (\$)**

Westin Bonaventure Hotel and Suites, Santa Anita A, Lobby Level

This session is supported by generous grants from The Andrew W. Mellon Foundation and the National Endowment for the Arts.

**Moving from Good Intentions to Impact: Exploring the Intersection of Governance and Equity, Diversity, and Inclusion (\$)**

Westin Bonaventure Hotel and Suites, Santa Anita B, Lobby Level

This session is made possible by a generous grant from The Andrew W. Mellon Foundation. Additional support is provided by the National Endowment for the Arts.

**Smallify Challenges: Innovation and Problem-Solving Lab (\$)**

Westin Bonaventure Hotel and Suites, Santa Anita C, Lobby Level

This session is supported by generous grants from The Andrew W. Mellon Foundation and the National Endowment for the Arts.

9:30am – 12:00pm

**Tapping Volunteer Power (Volunteers)**

Westin Bonaventure Hotel and Suites, San Gabriel B, Lobby Level

10:00am – 12:30pm

**LA Phil Rehearsal for Artistic Constituencies**

Walt Disney Concert Hall

10:30am – 4:15pm

**Exhibit Hall and Donor Desk Hours**

Westin Bonaventure Hotel and Suites, Exhibit Hall, Level 2

12:00pm – 1:00pm

**Sponsored Innovation Session: How to Engage with NextGen Audiences – Learnings from Vienna and Berlin (invitation only)**

Sponsored and Presented by easy-connect

12:30pm – 1:00pm

**Conference Orientation**

Westin Bonaventure Hotel and Suites, San Francisco and Sacramento, Level 2



# PROGRAM

Wednesday, June 1, 2022

---

*Program subject to change. As of program book print date (5/16/2022), masking is required at the Judith and Thomas L. Beckmen YOLA Center, Zipper Hall, and Walt Disney Concert Hall.*

**1:00pm – 3:00pm**

## **Constituency Meetings**

*Please refer to your agendas for complete breakout times and locations.*

### **Artistic Administrators**

*Westin Bonaventure Hotel and Suites, San Fernando, Lobby Level  
Meetings sponsored by The Cliburn*

### **Composers**

*Westin Bonaventure Hotel and Suites, Santa Barbara A, Lobby Level*

### **Conductors**

*Westin Bonaventure Hotel and Suites, Santa Barbara B, Lobby Level*

### **Development**

*Westin Bonaventure Hotel and Suites, Santa Monica B, Level 3  
Meetings sponsored by Bennett Direct*

### **Education/Community Engagement**

*Westin Bonaventure Hotel and Suites, Beaudry A, Lobby Level*

### **Executive Directors, Group 1**

*Westin Bonaventure Hotel and Suites, San Gabriel A, Lobby Level*

### **Executive Directors, Group 2**

*Westin Bonaventure Hotel and Suites, San Pedro, Lobby Level*

### **Executive Directors, Groups 3-4**

*Westin Bonaventure Hotel and Suites, San Gabriel B, Lobby Level  
Meetings sponsored by RSC Fundraising*

### **Executive Directors, Groups 5-6**

*Westin Bonaventure Hotel and Suites, Palos Verde, Lobby Level  
Meetings sponsored by Nave Strategies*

### **Executive Directors, Groups 7-8**

*Westin Bonaventure Hotel and Suites, Santa Anita A, Lobby Level*

### **Finance**

*Westin Bonaventure Hotel and Suites, Santa Anita B, Lobby Level  
Meetings sponsored by AccountingWare*

### **General Managers and Operations**

*Westin Bonaventure Hotel and Suites, Beverly, Level 2  
Meetings sponsored by Spektrix  
Additional support provided by Boomerang Carnets | CIB*

### **Marketing, Groups 1-2**

*Westin Bonaventure Hotel and Suites, Santa Anita B, Lobby Level  
Meetings sponsored by VATIC*

### **Marketing, Groups 3-8**

*Westin Bonaventure Hotel and Suites, Santa Anita C, Lobby Level*



### **Musicians**

*Westin Bonaventure Hotel and Suites, Los Feliz, Lobby Level*

### **Orchestra Board Members**

*Westin Bonaventure Hotel and Suites, Emerald Bay, Level 3  
Meetings sponsored by Arts Consulting Group*

### **Public Relations**

*Westin Bonaventure Hotel and Suites, Los Cerritos, Lobby Level*

### **Students**

*Westin Bonaventure Hotel and Suites, San Bernadino, Lobby Level*

### **Volunteers**

*Westin Bonaventure Hotel and Suites, San Gabriel B, Lobby Level*

### **Youth Orchestra Division**

*Westin Bonaventure Hotel and Suites, Beaudry B, Lobby Level*

**3:00pm – 4:00pm**

#### **All-Delegate Reception**

*Westin Bonaventure Hotel and Suites, Exhibit Hall, Level 2*

**3:00pm – 4:00pm**

#### **League Alumni Network Reception (invitation only)**

*Westin Bonaventure Hotel and Suites, Avalon, Level 3  
This reception has been generously sponsored by Colbert Artists Management.*

**4:30pm – 6:00pm**

#### **Welcome to LA: Opening Session**

*Walt Disney Concert Hall*

Come together in Walt Disney Concert Hall for a discussion between Gustavo Dudamel and composer John Williams on how the large-ensemble sound of an orchestra uniquely animates storytelling through film. Hilda L. Solis, Los Angeles County Supervisor, First District, will welcome delegates to our host city and YOLA (Youth Orchestra Los Angeles) will perform.

Speakers: Gustavo Dudamel, Los Angeles Philharmonic, the Simón Bolívar Symphony Orchestra, and the Opéra national de Paris; Chad Smith, Los Angeles Philharmonic Association; Hilda L. Solis, Los Angeles County Supervisors; Sarah Weber, Association of California Symphony Orchestras; John Williams, composer, conductor, and pianist; Simon Woods, League of American Orchestras

*The Opening Session has been generously sponsored by BMI.*

**6:30pm – 8:00pm**

#### **LGBTQIA+ Affinity Group Reception**

*Westin Bonaventure Hotel and Suites, Avalon, Level 3*

**7:00pm – 10:00pm**

#### **League Donor Dinner (invitation only)**

*The California Club*



# PROGRAM

Thursday, June 2, 2022

---

Program subject to change. As of program book print date (5/16/2022), masking is required at the Judith and Thomas L. Beckmen YOLA Center, Zipper Hall, and Walt Disney Concert Hall.

7:30am – 5:30pm

## Conference Registration

Westin Bonaventure Hotel and Suites, Exhibit Hall, Level 2

7:45am – 8:45am

## Innovation Session: We Are What We Play: Orchestral Repertoire in 2022 and Beyond

Westin Bonaventure Hotel and Suites

8:00am – 9:00am

## Sponsored Innovation Sessions

### **COVID-Era Customer Data Trends: Are We Really Bouncing Back?**

Westin Bonaventure Hotel and Suites, Palos Verde, Lobby Level

Sponsored and Presented by TRG Arts

### **Dynamic Pricing | Let the Patron Decide (invitation only)**

Westin Bonaventure Hotel and Suites

Sponsored and Presented by VATIC

### **When is Money an Asset and When is it a Liability?**

Westin Bonaventure Hotel and Suites, Santa Barbara A, Lobby Level

Sponsored and Presented by AccountingWare

8:30am – 5:30pm

## Exhibit Hall and Donor Desk Hours

Westin Bonaventure Hotel and Suites, Exhibit Hall, Level 2

9:00am – 10:30am

## Elective Session: A Celebration of Black Composers

Zipper Hall at The Colburn School of Music

The Inner City Youth Orchestra of Los Angeles is the largest majority Black orchestra in America. Founded in 2009, it is a civic treasure that transforms the lives and minds of young people in Inner City Los Angeles. Hear the orchestra perform a celebration of music by Black composers led by its Founder, Executive Director, and Conductor Charles Dickerson III. The program is curated by Charles Dickerson with support from Dr. Louise Toppin and James Blachly, Directors of the African Diaspora Music Project ([www.africandiasporamusicproject.org](http://www.africandiasporamusicproject.org)).

### Program

1. *Lift Every Voice and Sing*, John Rosamond Johnson, 1900 Arrangement for orchestra by Charles Dickerson, 2022
2. *Toast of the Town Overture*, Quinn Mason, 2020
3. “Benediction” from *Montgomery Variations*, Margaret Bonds, 1964





4. *Motor City Dance Mix*, Jonathan Bailey Holland, 2003
5. *Short Piece for Orchestra*, Julia Perry, 1952
6. *Rejoice*, Courtney Bryan, 2019
7. *The Great Migration*, Kathryn Bostic, 2018
8. “*Song Form*” from *Sinfonietta No. 1*, Coleridge Taylor Perkinson, 1976
9. *Umbrian Scene*, Ulysses Kay, 1965
10. “*Larghetto*” from *For a Younger Self*, Kris Bowers, 2020  
“*Presidents*” from *Dancers, Dreamers and Presidents*, Daniel Bernard Roumain, 2012
11. *Trial and Triumph*, Kenechi Fortune and Kevon Fortune, 2022

Speakers: James Blachly, Johnstown Symphony Orchestra, Experiential Orchestra; Charles Dickerson III, Inner City Youth Orchestra of Los Angeles; and Dr. Louise Toppin, University of Michigan

*This elective has been generously sponsored by The Stander Group. This session is supported by generous grants from the Aaron Copland Fund for Music and The Andrew W. Mellon Foundation.*

**9:00am – 10:15am**

### **Elective Sessions**

#### ***Beyond COVID-19: Immersed in the Future***

Westin Bonaventure Hotel and Suites, Avalon, Level 3

#### ***Climate Change: Orchestrating Sustainability***

Westin Bonaventure Hotel and Suites, Hollywood Ballroom, Level 3

#### ***Post-Pandemic Financial Planning: Evolving Assumptions About Budgeting and Use of Capital***

Westin Bonaventure Hotel and Suites, Emerald Bay, Level 3

#### ***The Beckmen YOLA Center: How a Public-Private Partnership Driven by Personal Passion is Delivering Community Transformation***

Westin Bonaventure Hotel and Suites, Beaudry B, Lobby Level

**10:15am – 11:15am**

### **Coffee/Networking Break**

Westin Bonaventure Hotel and Suites, Exhibit Hall, Level 2

*This session has been generously sponsored by Sciolino Artists Management.*

**10:45am – 12:15pm**

### **Elective Session: Concert Halls are the New Movie Palaces**

Zipper Hall at The Colburn School of Music

*This elective has been generously sponsored by TCG Entertainment.*



# PROGRAM

Thursday, June 2, 2022

Program subject to change. As of program book print date (5/16/2022), masking is required at the Judith and Thomas L. Beckmen YOLA Center, Zipper Hall, and Walt Disney Concert Hall.

## 11:15am – 12:30pm Elective Sessions

### **Diversifying Audiences with Research and Relevance**

Westin Bonaventure Hotel and Suites, Hollywood Ballroom, Level 3

This session is made possible by a generous grant from The Wallace Foundation. Additional support is provided by The Andrew W. Mellon Foundation.

### **Silver Linings from the Golden State: Stories of Collaboration within California's Orchestra Community**

Westin Bonaventure Hotel and Suites, Beaudry B, Lobby Level

This session is dedicated to the memory of Oakland Symphony Music Director Michael Morgan.

### **The Great Upgrade: Why Workforce Retention and Development Matters More Than Ever**

Westin Bonaventure Hotel and Suites, Emerald Bay, Level 3

### **The Present and Future of Audio Music Distribution**

Westin Bonaventure Hotel and Suites, Avalon, Level 3

## 12:45pm – 2:15pm

### **Annual Meeting and Luncheon**

Westin Bonaventure Hotel and Suites, San Francisco and Sacramento, Level 2

**New this year!** The Annual Meeting and Luncheon is included in your conference registration.

At the Annual Meeting and Luncheon, we will provide updates from the League, elect new board members, present the League's highest honor Gold Baton Award, and enjoy have lunch with colleagues. We're also proud to present an exclusive performance by an up-and-coming LA-based Baroque chamber ensemble, KONTRAPUNKTUS. The group is composed of remarkable young musicians who all hail from the prestigious Colburn School of Music in Los Angeles and the renowned Juilliard School in New York City and are led by Concertmaster Melody Ye Yuan. Kontrapunktus will be playing a special Baroque set featuring musical snippets from Francesco Geminiani and Antonio Vivaldi, culminating in a performance of Tomaso Antoni Vivaldi's "Chaconne in G Minor" by one of the fastest rising stars in classical music today, Aubree Oliverson.

This session has been generously sponsored by Kontrapunktus.

## 2:30pm – 5:30pm

### **Constituency Meetings**

Please refer to your agendas for complete breakout times and locations.

#### **Artistic Administrators**

Westin Bonaventure Hotel and Suites, San Fernando, Lobby Level

Meetings sponsored by The Cliburn

#### **Composers**

Westin Bonaventure Hotel and Suites, Santa Barbara A, Lobby Level



## **Conductors**

*Westin Bonaventure Hotel and Suites, Santa Barbara B, Lobby Level*

## **Development**

*Westin Bonaventure Hotel and Suites, Santa Monica A/B, Level 3*

*Meetings sponsored by Bennett Direct*

## **Education/Community Engagement**

*Westin Bonaventure Hotel and Suites, Beaudry A, Lobby Level*

## **Executive Directors, Group 1**

*Westin Bonaventure Hotel and Suites, San Gabriel A, Lobby Level*

## **Executive Directors, Group 2**

*Westin Bonaventure Hotel and Suites, San Pedro, Lobby Level*

## **Executive Directors, Groups 3-4**

*Westin Bonaventure Hotel and Suites, San Gabriel C, Lobby Level*

*Meetings sponsored by RSC Fundraising*

## **Executive Directors, Groups 5-6**

*Westin Bonaventure Hotel and Suites, Palos Verde, Lobby Level*

*Meetings sponsored by Nave Strategies*

## **Executive Directors, Groups 7-8**

*Westin Bonaventure Hotel and Suites, Santa Anita A, Lobby Level*

## **Finance**

*Westin Bonaventure Hotel and Suites, La Cienega, Lobby Level*

*Meetings sponsored by AccountingWare*

## **General Managers and Operations**

*Walt Disney Concert Hall and Westin Bonaventure Hotel and Suites, Beverly, Level 2*

*Meetings sponsored by Spektrix*

*Additional support provided by Boomerang Carnets | CIB*

## **Marketing, Groups 1-2**

*Westin Bonaventure Hotel and Suites, Santa Anita B/C, Lobby Level*

*Meetings sponsored by VATIC*

## **Marketing, Groups 3-8**

*Westin Bonaventure Hotel and Suites, Santa Anita B/C, Lobby Level*

## **Musicians**

*Westin Bonaventure Hotel and Suites, Los Feliz, Lobby Level*

## **Orchestra Board Members**

*Westin Bonaventure Hotel and Suites, Emerald Bay, Level 3*

*Meetings sponsored by Arts Consulting Group*

## **Public Relations**

*Westin Bonaventure Hotel and Suites, Los Cerritos and Santa Anita B/C, Lobby Level*

## **Students**

*Westin Bonaventure Hotel and Suites, San Bernadino, Lobby Level*

## **Volunteers**

*Westin Bonaventure Hotel and Suites, San Gabriel B, Lobby Level*

## **Youth Orchestra Division**

*Westin Bonaventure Hotel and Suites, Beaudry B, Lobby Level*



# PROGRAM

Thursday, June 2, 2022

---

Program subject to change. As of program book print date (5/16/2022), masking is required at the Judith and Thomas L. Beckmen YOLA Center, Zipper Hall, and Walt Disney Concert Hall.

**5:30pm – 7:00pm**

**ACSO Member Reception (invitation only)**

*Westin Bonaventure Hotel and Suites, Pool Deck*

**7:00pm – 7:30pm**

**Pre-Concert Lecture**

*Walt Disney Concert Hall*

**8:00pm – 10:00pm**

**Los Angeles Philharmonic Concert (\$)**

*Walt Disney Concert Hall*

In this special Power to the People! concert, Gustavo Dudamel conducts the most recognized symphony—proudly based on the blues—by the Dean of African American Composers, William Grant Still, one of the leading lights of the Harlem Renaissance. The program also boasts a world premiere from the multi-talented Puerto Rico-born composer Angélica Negrón, who has already composed for a vast range of ensembles and projects, including scores for film, documentary, ballet, and theater, as well as many orchestral works and chamber music. And American mezzo-soprano J’Nai Bridges, a winner of the Marian Anderson Award, sings American composer Peter Lieberson’s Neruda Songs, the 2008 Grawemeyer Award for Music Composition.

**Program**

**Negrón, Moriviví (World Premiere, LA Phil Commission)**

**Lieberson, Neruda Songs (LA Phil Commission)**

*Intermission*

**Still, Symphony No. 1, “Afro-American”**

**Artists**

*Gustavo Dudamel, conductor*

*J’Nai Bridges, mezzo-soprano*

**10:00pm – 12:00am**

**Tune-Up Party**

*Walt Disney Concert Hall*

*Hosted by the LA Phil*



## Friday, June 3, 2022

---

Program subject to change. As of program book print date (5/16/2022), masking is required at the Judith and Thomas L. Beckmen YOLA Center, Zipper Hall, and Walt Disney Concert Hall.

**7:00am – 8:00am**

### **Exhibit Hall Coffee**

Westin Bonaventure Hotel and Suites, Exhibit Hall, Level 2

**7:00am – 12:00pm**

### **Conference Registration**

Westin Bonaventure Hotel and Suites, Exhibit Hall, Level 2

**7:00am – 1:00pm**

### **Exhibit Hall and Donor Desk Hours**

Westin Bonaventure Hotel and Suites, Exhibit Hall, Level 2

**8:00am – 9:15am**

### **Elective Sessions**

#### **Creating a More Equitable Future: Lessons from the Corporate Sector**

Westin Bonaventure Hotel and Suites, Emerald Bay, Level 3

This session has been generously sponsored by Accept'd.

This session is supported by a generous grant from The Andrew W. Mellon Foundation.

#### **Financial Sustainability in an Uncharted Era**

Westin Bonaventure Hotel and Suites, Beaudry B, Lobby Level

#### **The New Era of Philanthropy: Adapting to a Shifting Philanthropic Landscape**

Westin Bonaventure Hotel and Suites, Hollywood Ballroom, Level 3

This session has been generously sponsored by DCM.

#### **Top Five Digital & Technological Trends Orchestras Need to Know**

Westin Bonaventure Hotel and Suites, Avalon, Level 3

This session has been generously sponsored by Talaske | Sound Thinking.

#### **Toulmin Women Composer Commissions and Successful Composer Residencies: Case Studies**

Westin Bonaventure Hotel and Suites, Beverly, Level 2

This session is made possible by a generous grant from the Virginia B. Toulmin Foundation. Additional support is provided by the Aaron Copland Fund for Music.

**9:15am – 10:00am**

### **ALAANA Administrators Breakfast**

Westin Bonaventure Hotel and Suites

**9:15am – 10:00am**

### **Coffee/Networking Break**

Westin Bonaventure Hotel and Suites, Exhibit Hall, Level 2

This session has been generously sponsored by Opus 3 Artists.



# PROGRAM

Friday, June 3, 2022

---

Program subject to change. As of program book print date (5/16/2022), masking is required at the Judith and Thomas L. Beckmen YOLA Center, Zipper Hall, and Walt Disney Concert Hall.

10:00am – 11:30am

## Constituency Meetings

Please refer to your agendas for complete breakout times and locations.

### **Artistic Administrators**

Westin Bonaventure Hotel and Suites, San Fernando, Lobby Level  
Meetings sponsored by The Cliburn

### **Composers**

Westin Bonaventure Hotel and Suites, Santa Barbara A, Lobby Level

### **Conductors**

Westin Bonaventure Hotel and Suites, Santa Barbara B, Lobby Level

### **Development**

Westin Bonaventure Hotel and Suites, Santa Monica A, Level 3  
Meetings sponsored by Bennett Direct

### **Education/Community Engagement**

Westin Bonaventure Hotel and Suites, Beaudry A, Lobby Level

### **Executive Directors, Group 1**

Westin Bonaventure Hotel and Suites, San Gabriel A, Lobby Level

### **Executive Directors, Group 2**

Westin Bonaventure Hotel and Suites, San Pedro, Lobby Level

### **Executive Directors, Groups 3-4**

Westin Bonaventure Hotel and Suites, San Gabriel C, Lobby Level  
Meetings sponsored by RSC Fundraising

### **Executive Directors, Groups 5-6**

Westin Bonaventure Hotel and Suites, Palos Verde, Lobby Level  
Meetings sponsored by Nave Strategies

### **Executive Directors, Groups 7-8**

Westin Bonaventure Hotel and Suites, Santa Anita A, Lobby Level

### **Finance**

Westin Bonaventure Hotel and Suites, La Cienega, Lobby Level

### **General Managers and Operations**

Westin Bonaventure Hotel and Suites, Beverly, Level 2  
Meetings sponsored by Spektrix  
Additional support provided by Boomerang Carnets | CIB

### **Marketing, Groups 1-2**

Westin Bonaventure Hotel and Suites, San Fernando, Lobby Level  
Meetings sponsored by VATIC

### **Marketing, Groups 3-8**

Westin Bonaventure Hotel and Suites, Santa Anita C, Lobby Level

### **Musicians**

Westin Bonaventure Hotel and Suites, Santa Barbara B, Lobby Level



### **Orchestra Board Members**

*Westin Bonaventure Hotel and Suites, Emerald Bay, Level 3  
Meetings sponsored by Arts Consulting Group*

### **Public Relations**

*Westin Bonaventure Hotel and Suites, Los Cerritos, Lobby Level*

### **Students**

*Westin Bonaventure Hotel and Suites, San Bernadino, Lobby Level*

### **Volunteers**

*Westin Bonaventure Hotel and Suites, San Gabriel B, Lobby Level*

### **Youth Orchestra Division**

*Westin Bonaventure Hotel and Suites, Beaudry B, Lobby Level*

**11:45am – 1:00pm**

### **Closing Session**

*Westin Bonaventure Hotel and Suites, San Francisco and Sacramento, Level 2*

Closing the Conference, Thomas Wilkins, Principal Conductor of the Hollywood Bowl Orchestra, will share his unique perspectives on the importance of connecting with audiences, engaging children in orchestral music, and committing to local communities.

In 2020, Wilkins was named the Boston Symphony Orchestra's first-ever Artistic Advisor for Education and Community Engagement. In 2021, he was named music director laureate of the Omaha Symphony after 16 years, becoming the longest-serving music director in the organization's 100+ year history.

Speakers: Gail Samuel, Boston Symphony Orchestra; Melia Tourangeau, Pittsburgh Symphony Orchestra; Sarah Weber, Association of California Symphony Orchestras; Thomas Wilkins, Hollywood Bowl Orchestra; Simon Woods, League of American Orchestras

*This session has been generously co-sponsored by Akustiks, LLC, HGA Architects, and Schuler Shook.*

**8:00pm – 10:00pm**

### **Los Angeles Philharmonic Concert: Opening Night at the Hollywood Bowl (\$)**

*Hollywood Bowl*

It's a celebration of the Hollywood Bowl's first 100 years, featuring a sensational lineup of musicians paying tribute to LA's summer home for music. Dudamel and the Los Angeles Philharmonic join up with the incomparable Gwen Stefani. Both as a solo artist and as frontwoman of No Doubt, Stefani is a Southern California icon, a three-time Grammy winner whose massive songs—including "Don't Speak," "Hollaback Girl," "Used to Love You," and so many more—have made her beloved the world over.



# PROGRAM

Dudamel and the LA Phil open the evening with the world premiere of a fanfare legendary composer John Williams wrote to commemorate the Bowl's centennial, followed by music that pays homage to the venue's history with Broadway, symphonic music, and dance—including an appearance by Italian ballet star Roberto Bolle and musicians from YOLA. Plus, enjoy music by jazz great Branford Marsalis, talented dance trio Let It Happen, the first-ever joint performance by members of the UCLA Bruin and USC Trojan marching bands, and a sky full of fireworks.

## **Artists**

- **Gwen Stefani**
- **Gustavo Dudamel, conductor**
- **Los Angeles Philharmonic**
- **YOLA (Youth Orchestra Los Angeles)**
- **Roberto Bolle**
- **Branford Marsalis**
- **UCLA Bruin Marching Band**
- **USC Trojan Marching Band**
- **Let It Happen**





## Registration Area / Help

At Conference, the League staff is ready to assist you! Look for us in the California Ballroom on the second floor of the Westin Bonaventure Hotel and Suites. Pick up your badge, ask questions, or simply come by to meet the League's amazing Member Services team.

Please note that your COVID-19 vaccination status will be checked the first time you enter the registration area. Once you have your badge, that will serve as proof that you have been vaccinated and boosted against COVID-19 for all Conference events.

*Badges for the League's National Conference are generously sponsored by TALASKE | Sound Thinking.*

*Delegate Bags sponsored by Fisher Dachs Associates | Theatre Planning and Design.*

## Exhibit Hall and Donor Desk Hours

### Wednesday, June 1

- 10:30am – 4:15pm

### Thursday, June 2

- 8:30am – 5:30pm

### Friday, June 3

- 7:00am – 1:00pm

## Registration Hours:

**May 31, 2022 2:00pm – 6:00pm**

**June 1, 2022 7:30am – 4:15pm**

**June 2, 2022 7:30am – 5:30pm**

**June 3, 2022 7:00am – 1:00pm**

Walk-up registrants are also welcome! We accept cash, personal checks, American Express, Discover, MasterCard, and Visa.

## Directions to Walt Disney Concert Hall and Zipper Hall

Take any elevator to level 5, walk to the Blue Tower, and walk up one flight to Level 6. (Note: The elevators do not serve Level 6). Then take the YMCA Sky Bridge from Level 6. We strongly urge that you use this Sky Bridge as the Lobby Level exits are at the foot of a steep hill.

## Becoming Familiar with the Westin Bonaventure Hotel and Suites

Most Conference events take place in the Westin Bonaventure Hotel and Suites. The hotel is arranged around four elevator towers, which are coded by color and shape:

**Blue – Triangle**

**Yellow – Diamond**

**Green – Square**

**Red – Circle**



## KEY INFO

Conference Meetings take place on the Lobby Level, Level 2, and Level 3. The The Mother's Room (for lactation) is on the Lobby Level across from the Beaudry Room. The Relaxation Room (a calm, quiet space) is on Level 2 in Rodeo. Men's and Women's restrooms are on the Lobby Level and Level 2. All Gender restrooms are on Level 3.

Color-coded elevators do not stop on Level 2. Level 2 is reached by escalator from the Lobby Level, Level 3, or the Figueroa Street Entrance. The Yellow elevator is closest to all meeting rooms except for the Hollywood Ballroom which is between the red and blue elevators. Guest rooms are on Level 10 and higher.

### WIFI

Complimentary wireless internet access is available in the exhibit area and all public spaces within the hotel meeting space. Please choose the Westin Meeting network and use the password LeagueConf2022.

### Access the 2022 Conference App

For instructions on how to download the 2022 Conference app, please visit [leagueconference.org/app](https://leagueconference.org/app).

### Social Media

Please feel free to share your Conference experience on social media. We love hearing about what resonates with you and seeing your photos! Tag the League at [@orchleague](https://twitter.com/orchleague) and use the Conference hashtag [#orch2022](https://twitter.com/hashtag/orch2022) to connect with other attendees.

### Health and Safety

Creating a healthy and safe environment for all participants is a top priority. Please familiarize yourself with the League's Event Participation Agreement [leagueconference.org/participation](https://leagueconference.org/participation) and COVID-19 Protocols [leagueconference.org/covid-19-protocols](https://leagueconference.org/covid-19-protocols).

If you experience disrespectful behavior and feel in any way unable to respond or resolve it peacefully (for any reason), please promptly bring it to the attention of League staff or email [member@americanorchestras.org](mailto:member@americanorchestras.org).

As of the print date of the program book (5/16/2022), masking is required at Walt Disney Concert Hall, Zipper Hall, and Beckmen YOLA Center and optional at the hotel and at SoFi Stadium. If state and local guidelines change, we reserve the right to change the hotel masking policy with short notice, so please check the Conference app or visit [leagueconference.org/covid-19-protocols/#masks](https://leagueconference.org/covid-19-protocols/#masks) for the latest information.

Wristbands of different colors are available at a table near the registration area to help you communicate your comfort level with various social interactions such as shaking hands, hugging, or no touching at all.

**Red Bands = Social Distance (No Touching)**

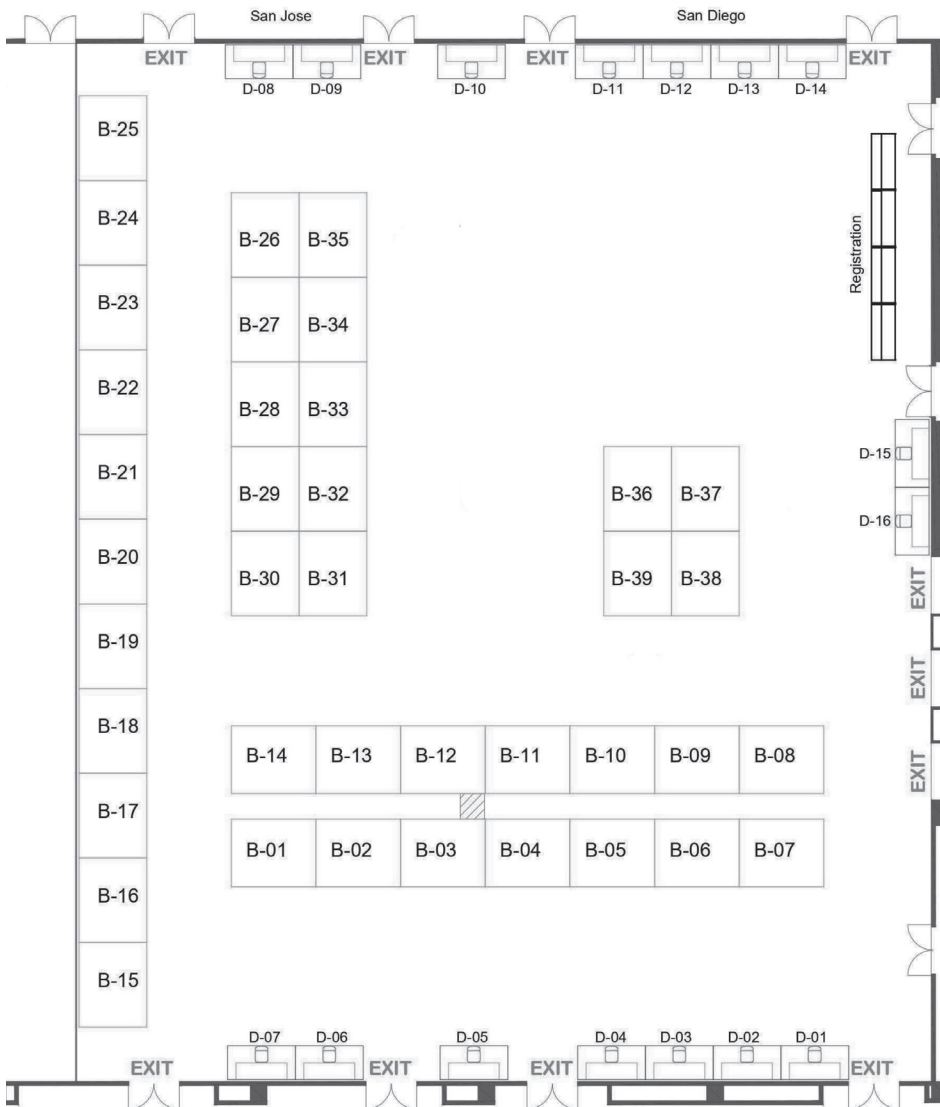
**Yellow Bands = Elbows and Fist-bumps**

**Green Bands = Handshakes and Hugs**

In the unlikely event that you test positive for COVID-19 during Conference, do not attend any additional in-person sessions or functions. You can use the Conference app to livestream the general sessions and any available elective sessions. Please email [member@americanorchestras.org](mailto:member@americanorchestras.org) right away to alert the League's staff and we'll work with you on next steps.



# Exhibitor Map

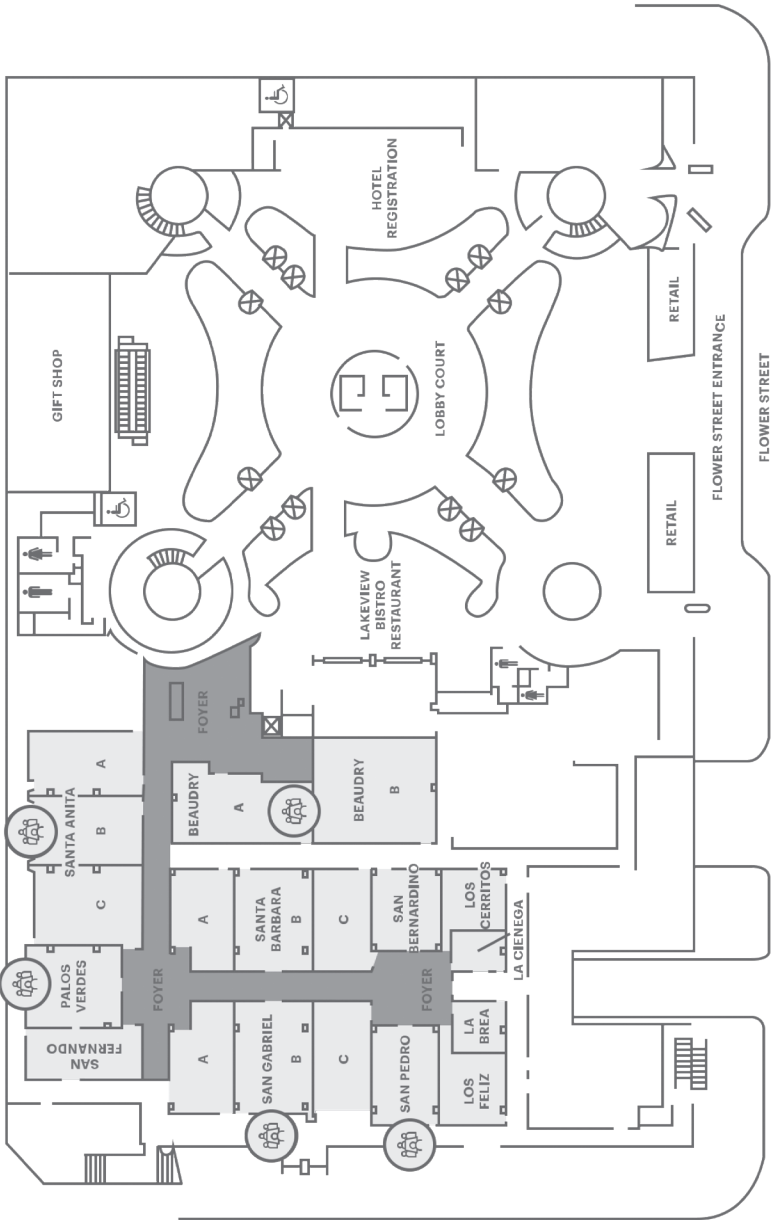




# LOBBY

LEAGUE OF AMERICAN ORCHESTRAS  
77TH NATIONAL CONFERENCE  
JUNE 1-3, 2022 | LOS ANGELES, CA

## Hotel Map

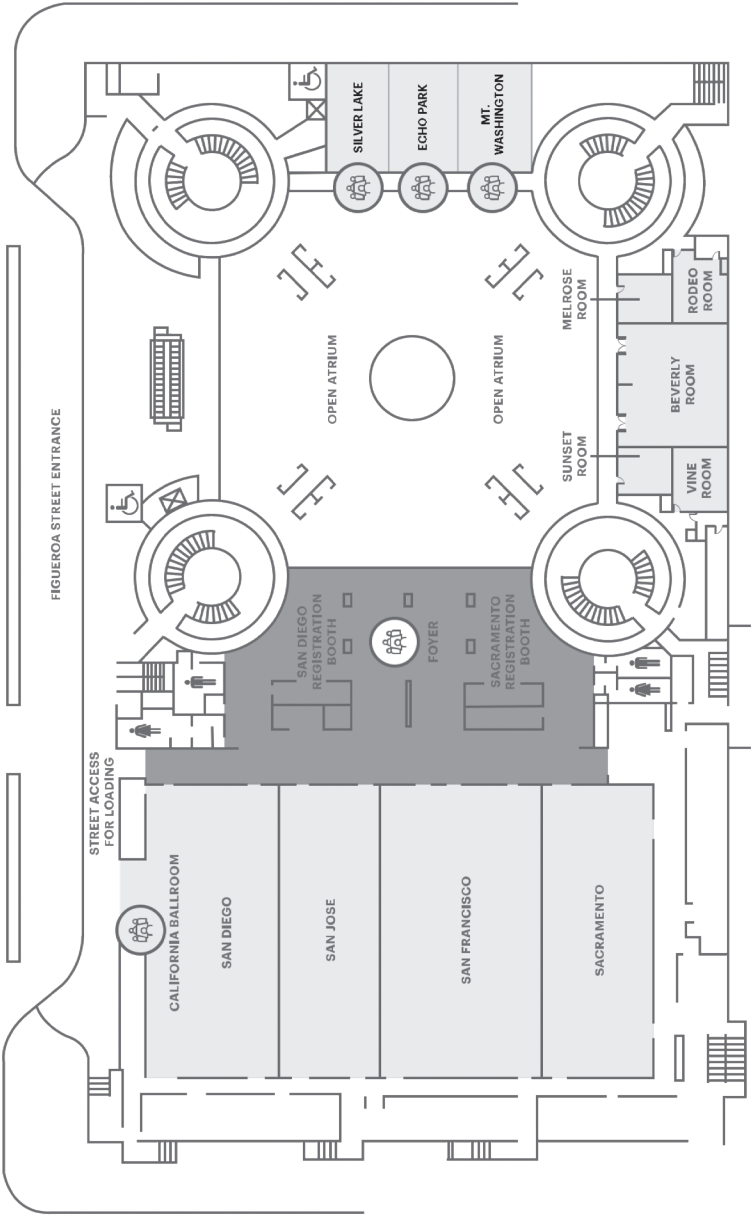


THE WESTIN BONAVENTURE HOTEL & SUITES, LOS ANGELES

# Hotel Map

LEAGUE OF AMERICAN ORCHESTRAS  
77TH NATIONAL CONFERENCE  
JUNE 1-3, 2022 | LOS ANGELES, CA

## LEVEL 2



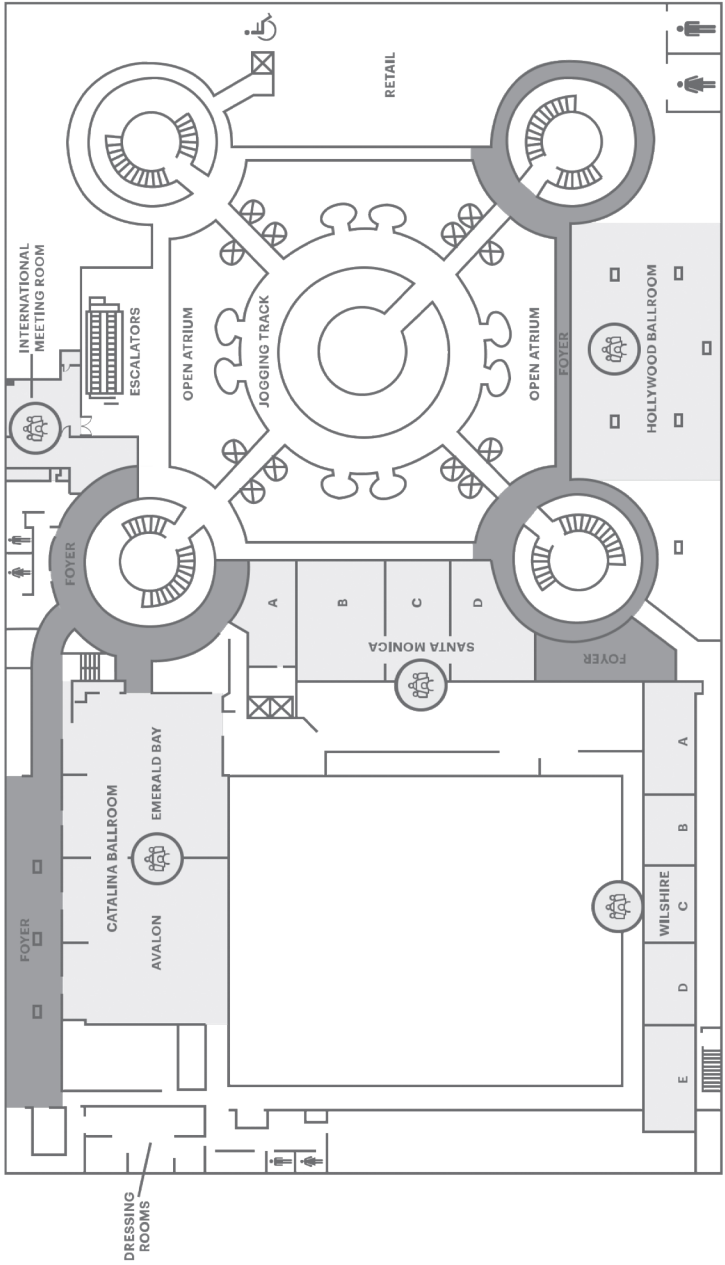
THE WESTIN BONAVENTURE HOTEL & SUITES, LOS ANGELES



# LEVEL 3

LEAGUE OF AMERICAN ORCHESTRAS  
77TH NATIONAL CONFERENCE  
JUNE 1-3, 2022 | LOS ANGELES, CA

## Hotel Map



THE WESTIN BONAVENTURE HOTEL & SUITES, LOS ANGELES

# THE GREATEST COMPOSERS CALL ASCAP HOME

FROM POPS TO THE CLASSICS, OUR COMPOSERS  
WRITE THE MUSIC THAT INSPIRES AUDIENCES  
AROUND THE COUNTRY.

AARON COPLAND • ALEX SHAPIRO • ALVIN SINGLETON •  
ANAHITA ABBASI • ANDREW NORMAN • ANGÉLICA  
NEGRÓN • ANTHONY DAVIS • ASH FURE • BÉLA BARTÓK •  
BENJ PASEK • BRANFORD MARSALIS • BRENT MICHAEL  
DAVIDS • BRUCE BROUGHTON • CARLOS SIMON • CAROLINE  
SHAW • CHRIS THEOFANIDIS • CHRISTOPHER BRUBECK •  
CHRISTOPHER CERRONE • COURTNEY BRYAN • DAN FOLIART •  
DAVID LANG • DAVID MASLANKA • DEREK BERMEL • DERRICK  
SKYE • DMITRI SHOSTAKOVICH • DUKE ELLINGTON • ELIZABETH  
OGONEK • ELLEN REID • ERIC EWAZEN • ERIC WHITACRE •  
ESA-PEKKA SALONEN • ESPERANZA SPALDING • FLORENCE PRICE •  
GABRIEL KAHANE • GABRIELA LENA FRANK • GEORGE GERSHWIN •  
GEORGE TSONTAKIS • GEORGE WALKER • GERMAINE FRANCO •  
GUSTAVO DUDAMEL • HANS ZIMMER • HUANG RUO • JAMES LEE III •  
JEANINE TESORI • JEFFREY TYZIK • JENNIFER HIGDON • JESSIE  
MONTGOMERY • JIMMY LÓPEZ BELLIDO • JIMMY WEBB • JOAQUÍN  
RODRIGO • JOHN CORIGLIANO • JON BATISTE • JONATHAN BAILEY  
HOLLAND • JONATHAN LESHNOFF • JULIA ADOLPHE • JULIA PERRY •  
JULIA WOLFE • LEI LIANG • LEONARD BERNSTEIN • LEOŠ JANÁČEK •  
LIN-MANUEL MIRANDA • LOWELL LIEBERMANN • MARGARET BONDS •  
MARIA SCHNEIDER • MASON BATES • MICHAEL ABELS • MICHAEL  
GIACCHINO • MICHAEL GORDON • MICHAEL TILSON THOMAS • NICO  
MUHLY • NINA SHEKHAR • PHILIP GLASS • PINAR TOPRAK •  
QUINN MASON • REENA ESMail • RICKY IAN GORDON •  
ROBERTO SIERRA • ROSCOE MITCHELL •  
SHARON FARBER • SHELLEY WASHINGTON •  
SIDDHARTHA KHOSLA • STACY GARROP •  
STEPHEN SCHWARTZ • TAN DUN • TANIA  
LEÓN • TED HEARNE • TIMO ANDRES •  
VALERIE COLEMAN • WILLIAM GRANT  
STILL • WYNTON MARSALIS • ZHOU TIAN  
... AND MANY MORE



# KONTRAPUNKTUS

A BAROQUE CHAMBER ORCHESTRA

Come Visit Us at Booth B-04

## Watch us perform at the League's Annual Meeting & Luncheon

Thursday, June 2<sup>nd</sup> 12:45 pm

Westin Bonaventure Hotel & Suites

San Francisco & Sacramento Ballrooms, Level 2



- > Specializing in the production of unique Baroque concert performances since 2017
- > Featuring some of the finest musicians the prestigious Colburn and Juilliard Schools have to offer
- > Committed to delivering the highest standards required of a performance for the benefit of audiences
- > Supported by the most renowned LA and OC Performing Arts organizations
- > Expansive online presence with over 700k views on YouTube

Featuring Soloist, AUBREE OLIVERSON

Contact Executive Director, Raymond Jacobs, at  
[rdjpublishing2014@gmail.com](mailto:rdjpublishing2014@gmail.com) for concert bookings!





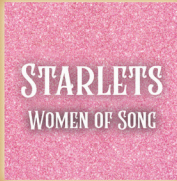
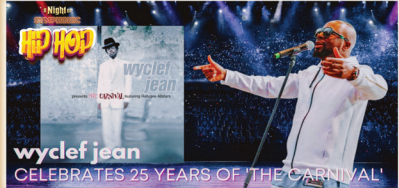
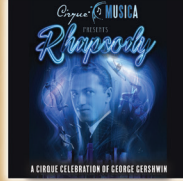
# TCG

# 2023 SYMPHONY ROSTER

ENTERTAINMENT



## NEW 2023 SHOWS



FOR BOOKING INFORMATION CONTACT JIM DAVIDSON AT [JIM@TCGENT.COM](mailto:JIM@TCGENT.COM) OR STEPHEN COOK AT [STEVE@TCGENT.COM](mailto:STEVE@TCGENT.COM) OR 972-727-7779