

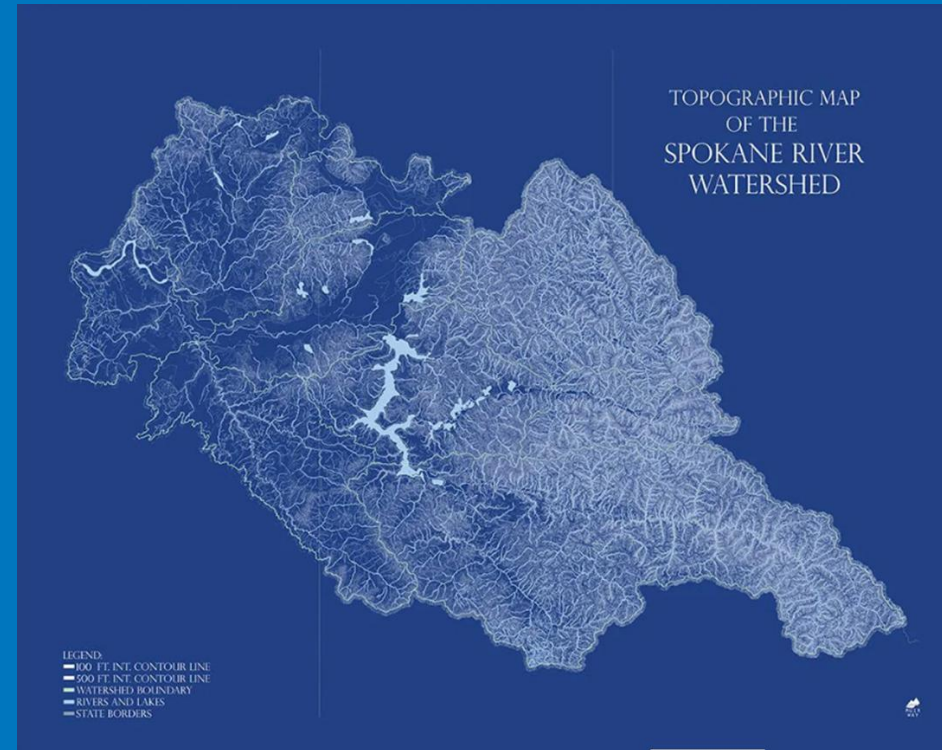


## 3rd Annual Water Law Conference

May 28, 2026

# Spokane River FERC Project No. 2545

License and Management of Spokane River Flows

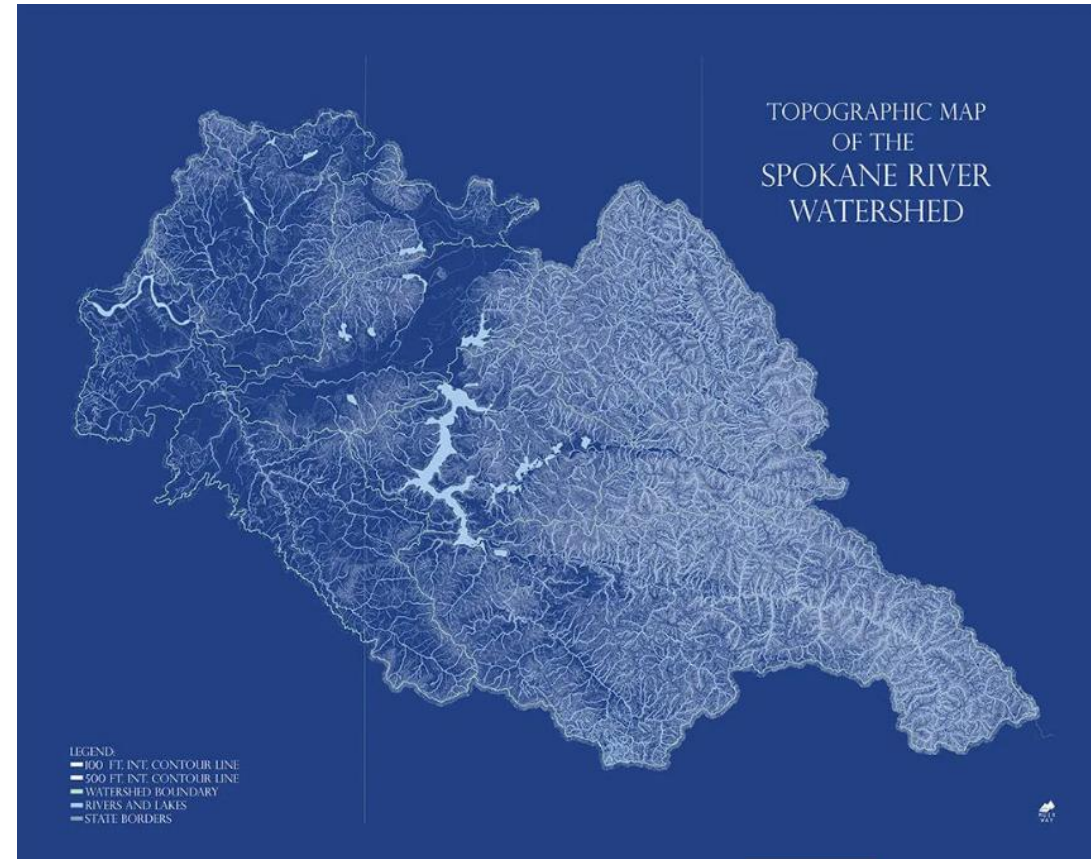


Map Source: Muir Maps

Meghan Lunney, Spokane River License Manager

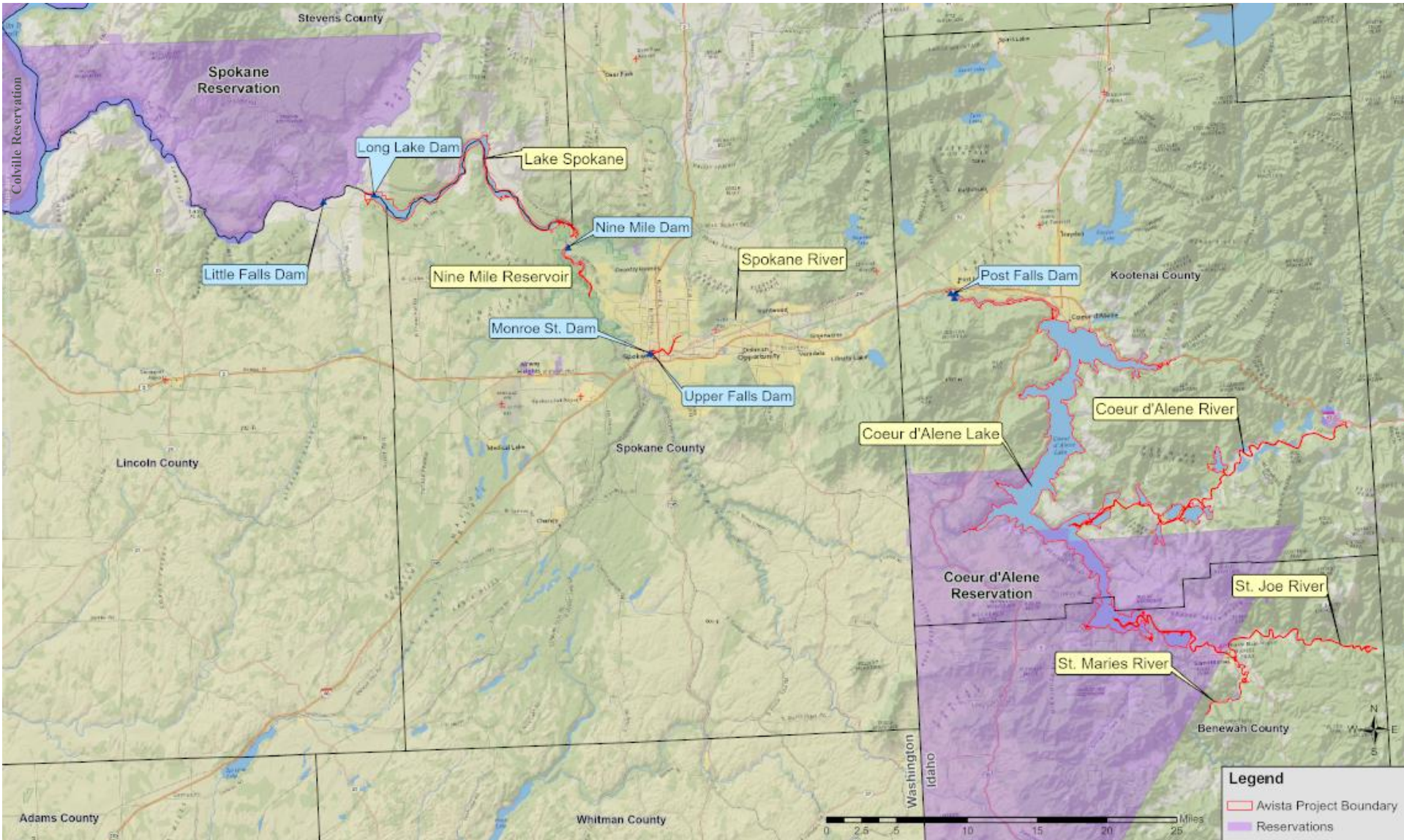
# AGENDA

- CDA Lake & PF Dam Operations
- Spokane River Flows
- Upper Falls/Monroe Street Dam
- Nine Mile Dam
- Long Lake Dam
- Little Falls Dam



[Source: Spokane Watershed Map-Range Series – Muir Way](#)

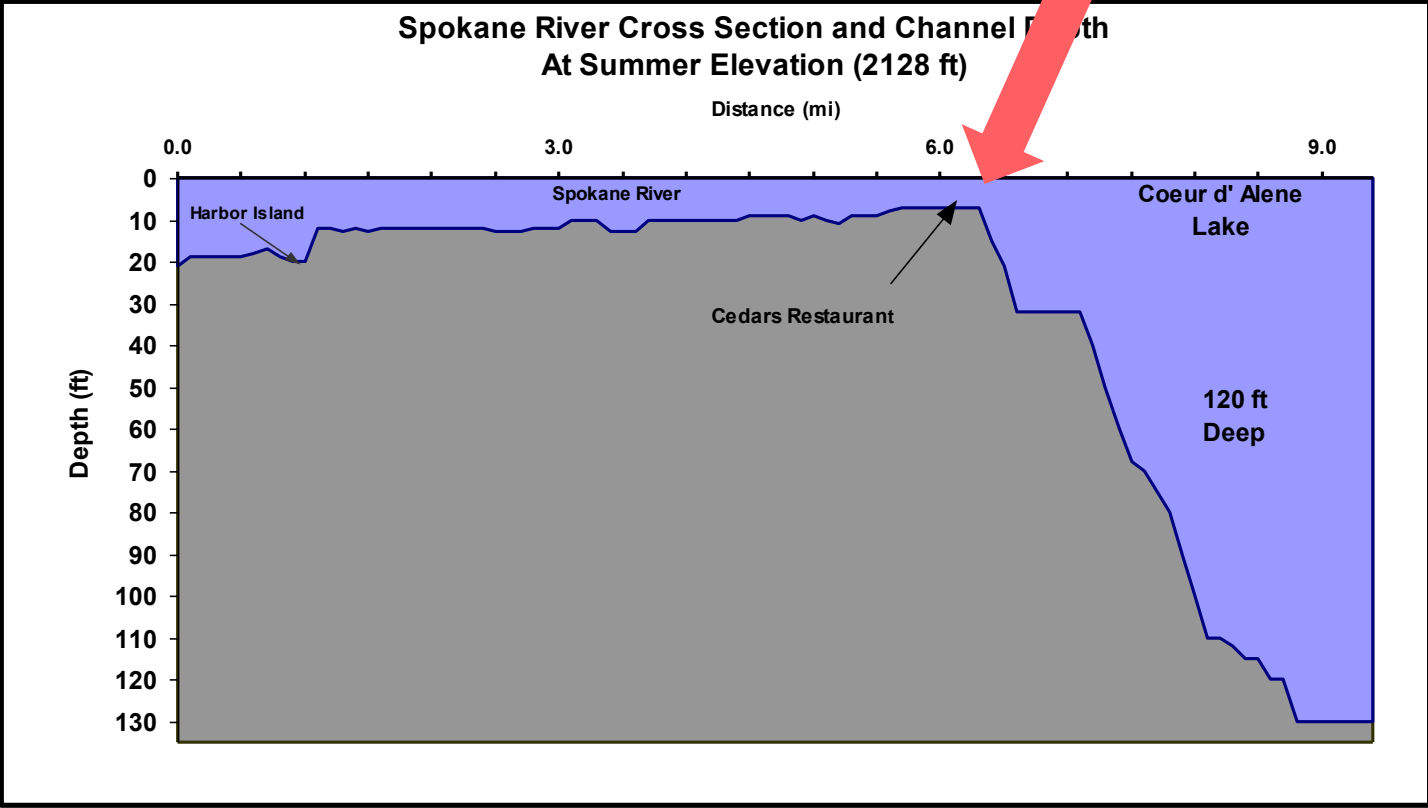
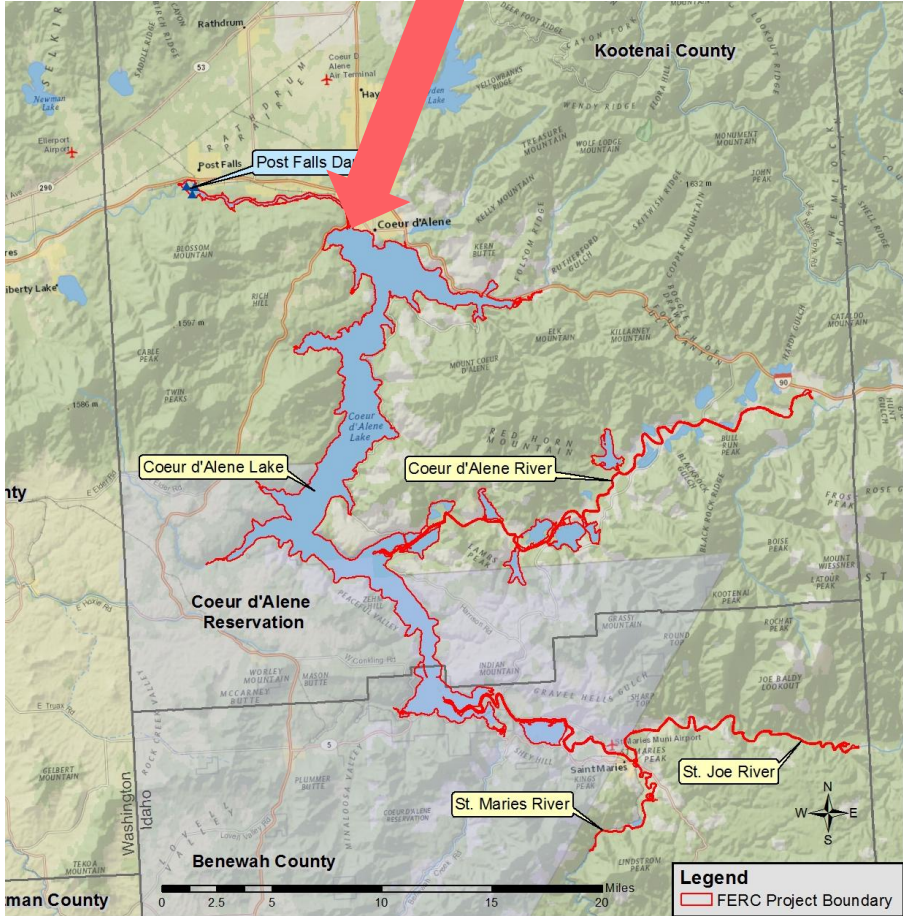
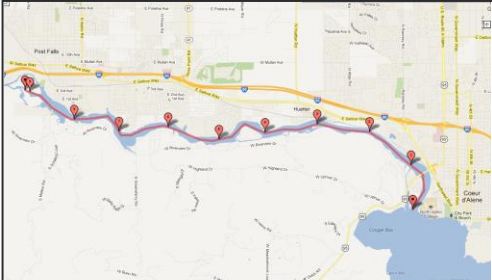
# Spokane River License, P-2545



# Relicensing Background

2002-2007	Relicensing Spokane River Project
3/06/2007	WDFW submits 10(j) recommendations
5/04/2007	US Forest Service issued 4(e) conditions
6/05/2008	ID 401 Certification issued
1/27/2009	CDA Tribe (Dept. of Interior) issued 4(e) conditions
5/08/2009	WA 401 Certification issued
2009+	
6/18/2009	FERC issued Spokane River Project new license for 50-year term
	Multiple 10 settlement agreements reached w/agencies, tribes and stakeholders
	Implementation begins

# CDA Lake/Spokane River



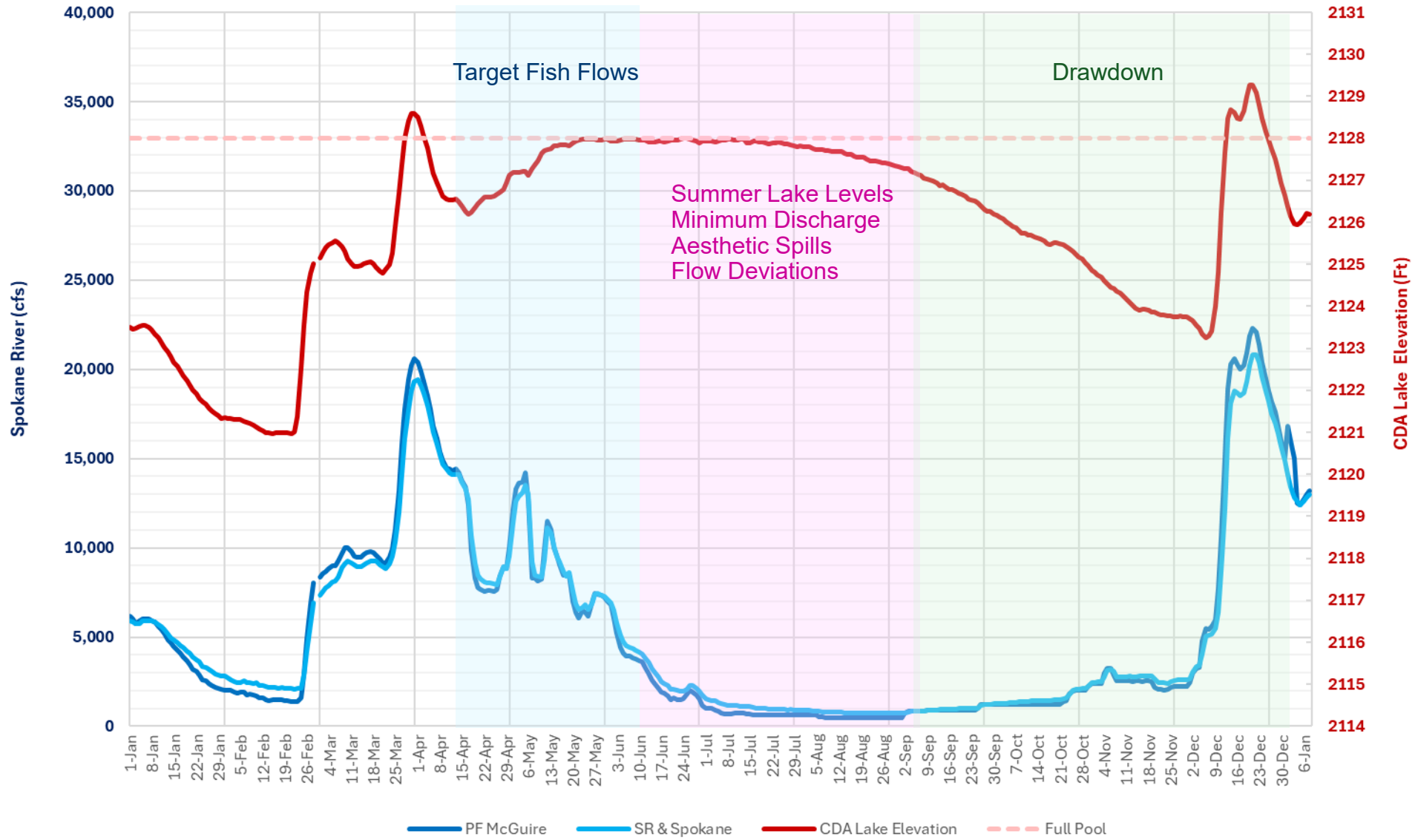
# Avista's Operational FERC License Requirements

## Post Falls Dam

- **Target Fish Flow** (Appendix A, Condition V)
- **Lake Level** (Appendix A, Condition I)
- **Minimum Discharge** (Appendix A, Condition I)
- **Aesthetic Flows** (Article 420)
- **Down-ramping rate** (Appendix A, Condition VI)
- **Flow Deviations** (Appendix A, Condition I)



## 2025 CDA Lake & Spokane River Flows



# Upper Falls Dam

## Upper Falls

### Reservoir level

- Normal full pool elevation of 1,870.5 feet.

### Aesthetic Spill

- Day-time aesthetic spill a minimum of 320 cfs through the Upper Falls bypass reach between 6 am and one half hour after sunset, year-round, for term of License.
  - If flows drop below 800 cfs, maintain minimum aesthetic spill through bypass reach of at least 250 cfs.
  - Night-time aesthetic spill of at least 100 cfs between one-half after sunset and 6 am.

### Minimum Discharge

- Maintain following minimum flows:

June 16 – Sept. 30	850 cfs
October 1 – March 31	1,100 cfs



# Monroe Street Dam

## Monroe Street

### Reservoir level

- Normal full pool elevation of 1,806.3 feet.

### Aesthetic Spill

- Day-time aesthetic spill of at least 200 cfs between 10 am and one half-hour after sunset.
- Night-time aesthetic spill of at least 100 cfs between one-half hour after sunset and 10 am.

### Minimum Discharge

- Maintain following minimum flows:

June 16 – Sept. 30	850 cfs
October 1 – March 31	1,100 cfs



# Nine Mile Dam

## Lake Level

- Maintain a normal full pool elevation of 1,606.6', year round.
- Maintain reservoir within the top 1' of the normal full pool elevation.
- Do not exceed a 4" per hour down-ramp rate for erosion and fisheries protection.

**There are no other operational or minimum flow requirements for this development.**

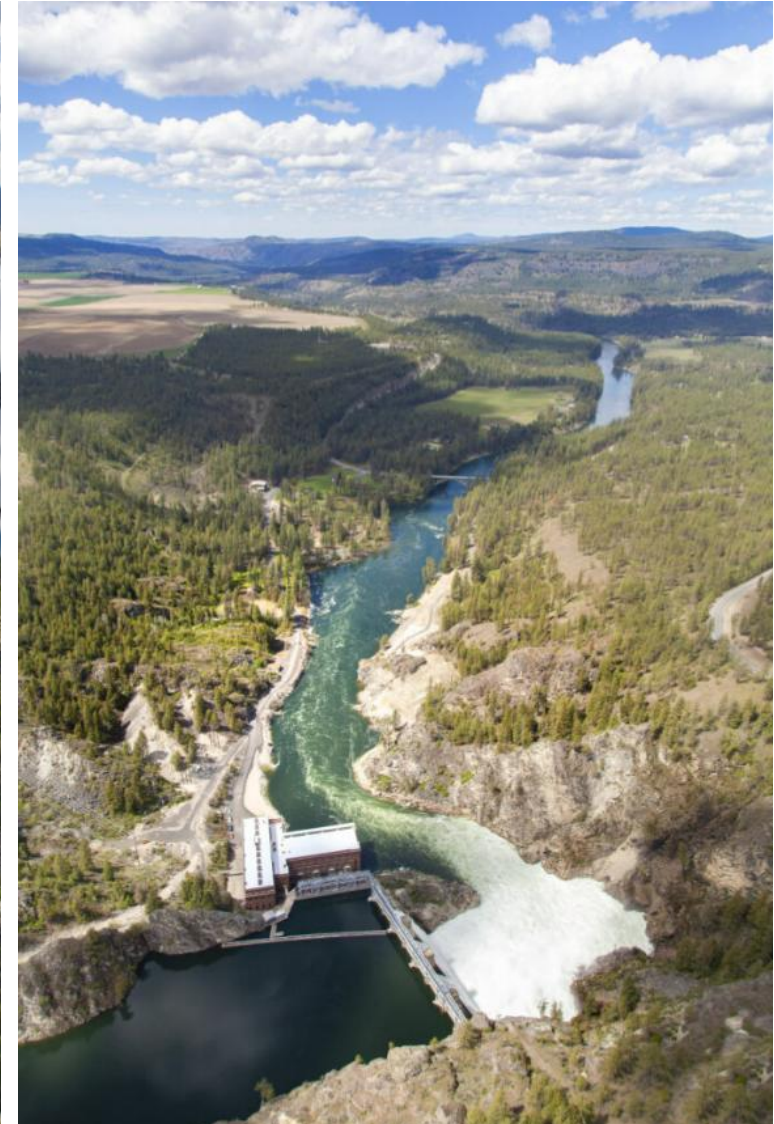
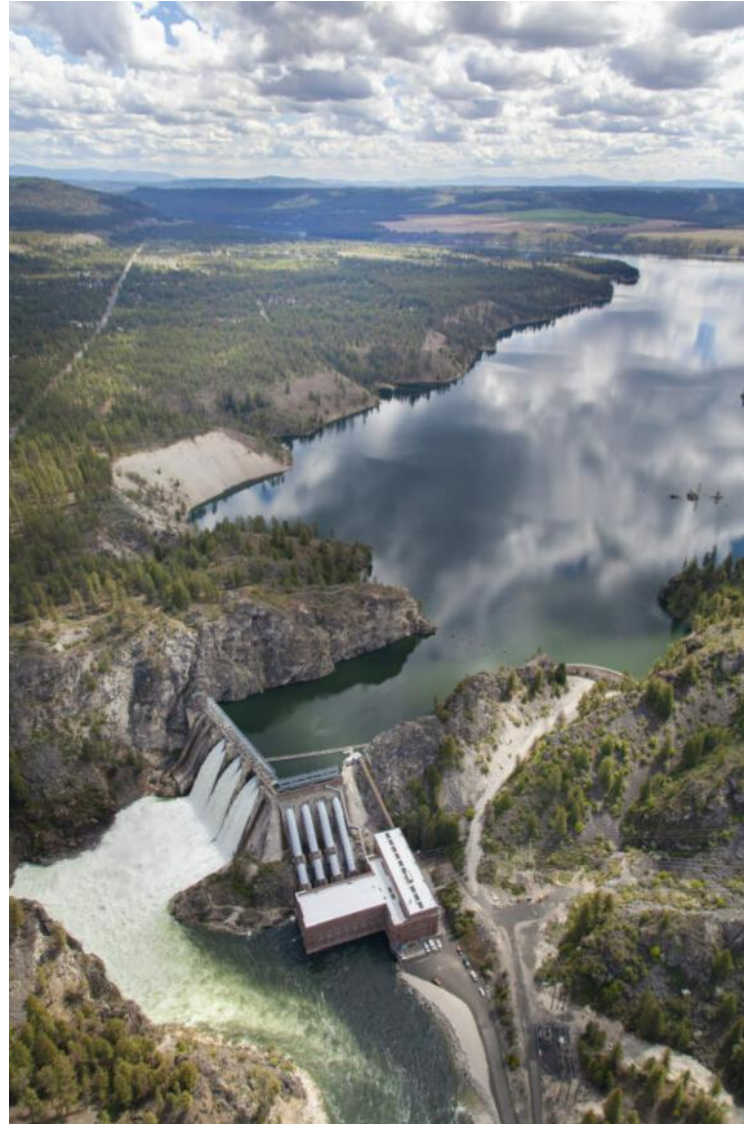


# Long Lake Dam

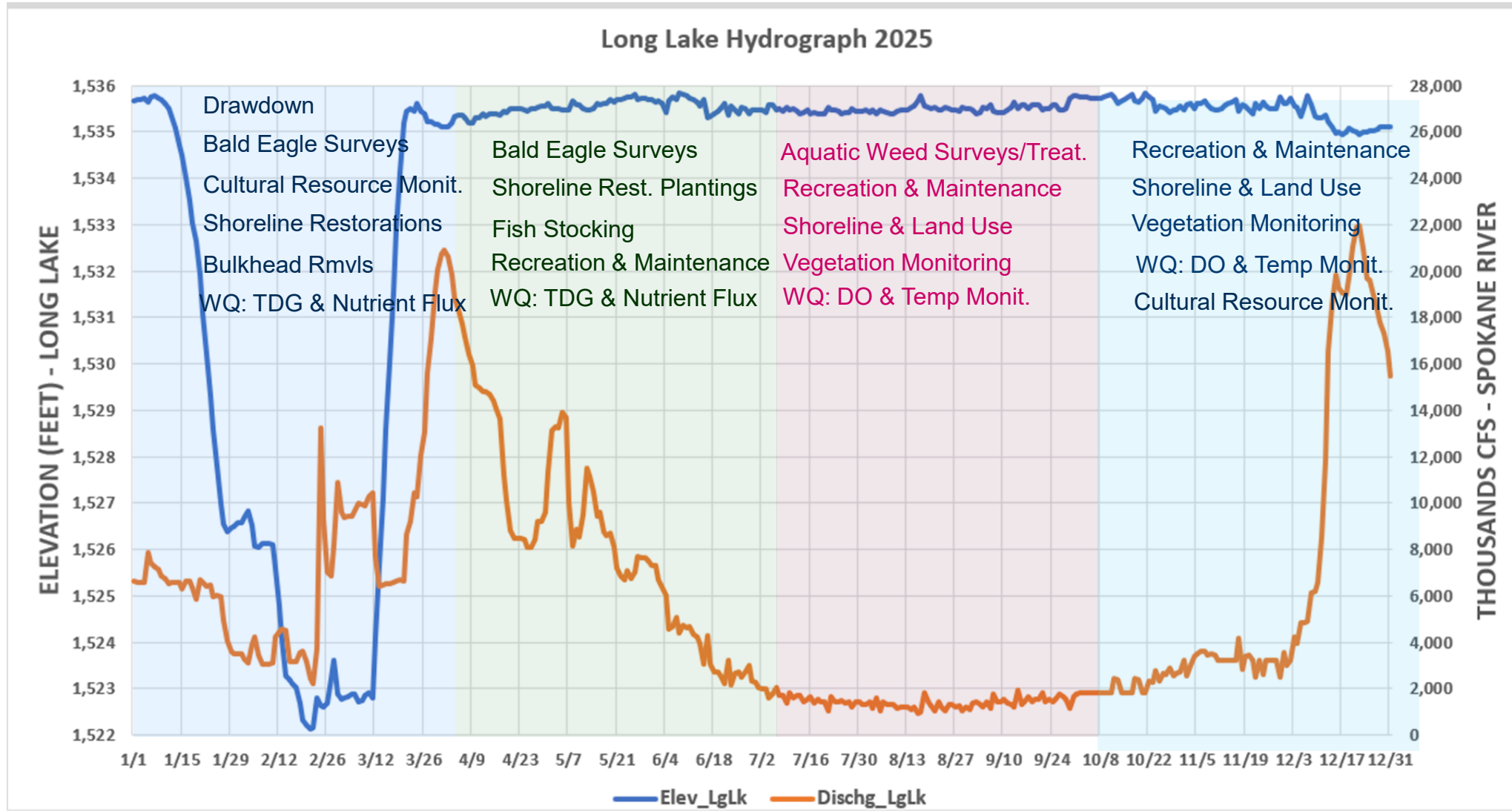
## Lake Level

- Maintain a normal full pool elevation of 1,536'.
- Maintain reservoir within the top 1' of the normal full pool elevation, except during the winter drawdown.
- Achieve a 13' to 14' drawdown for an extended period of below-freezing temperatures during the months of December through February, for a 3 to 6 week duration, at least once every four year period.
- Do not exceed a 4" per hour down-ramp rate for erosion and fisheries protection.
- Discretionary spill up to 4,000 cfs allowed during negative pricing.

**There are no other operational or minimum flow requirements for this development.**



# Lake Spokane Elevation & LL Discharge



# Little Falls Dam

## Lake Level

- Maintain a normal full pool elevation of 1362'.

## Minimum Discharge

- Maintain a minimum discharge of at least 200 cfs.
- Maintain a minimum discharge of at least 500 cfs, whenever Lake Roosevelt is equal to or less than 1,281'.



# Questions?

---

Meghan Lunney, Spokane River License Manager

[Meghan.Lunney@avistacorp.com](mailto:Meghan.Lunney@avistacorp.com)

509-495-4643