

Spokane County's Role In Municipal Water Supplies

Amy Sumner

Water Resources, Spokane County

Water Law in Eastern WA Conference

28 May 2026



Spokane County

WASHINGTON

Spokane County Public Works, Water Resources

Mission statement:

The Water Resources Program serves Spokane County residents by protecting the quality and quantity of Spokane County surface and groundwater resources, now and into the future, recognizing the many desired uses including domestic, agricultural, recreational, industrial, municipal and hydroelectric.





Ben

Stan
(retired)

Kyle

Rob
(retired??)

Ian

RaeAnn

Elisabeth

Reanette
(retired)

Jeremy
LLSWD/
SAJB

Nicki

Laura

Meet our award-winning Water Resources team

Water Resources On-going Programs



SVRP Aquifer (APA)



Saltse Flats



Little Spokane



WRC



DMLC

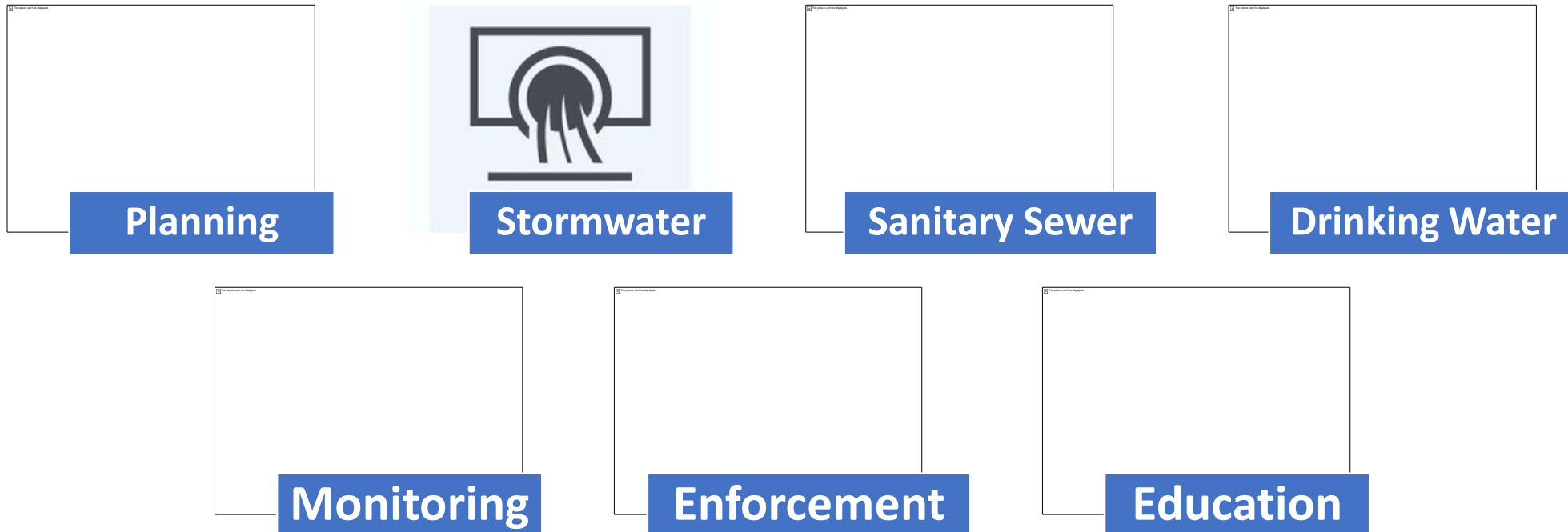
Spokane County's Role in Municipal Water

Spokane County is NOT a municipal water provider, but we have various roles related to municipal water supplies:

- Aquifer Protection Areas
- Regional collaboration
- Coordinated Water System Plan
- Comprehensive Planning

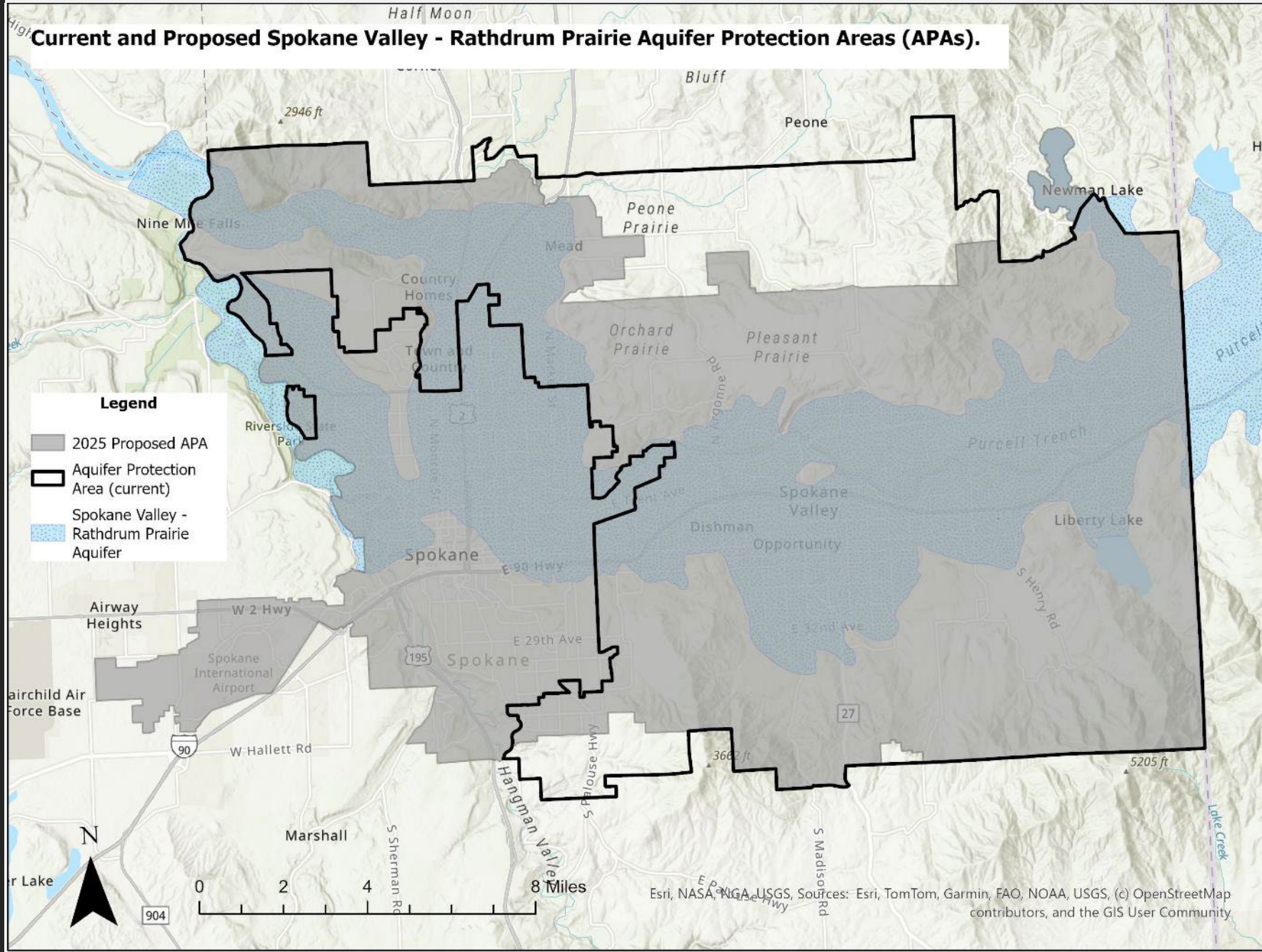
Aquifer Protection Areas (APAs)

- **County can establish APA under State Law RCW 36.36**
- **APA cannot include City or Town without approval**
- **Allowable expenditures (RCW 36.36.040) include:**



History of the SVRP APA

- **1985** – Established the SVRP APA
 - Cities of Spokane and Millwood
 - Parts of Spokane County
- **2004** – Renewed with adjusted boundaries
 - Cities of Millwood, Spokane Valley, and Liberty Lake
 - Parts of Spokane County
- **2025** – Renewed with adjusted boundaries
 - Cities of Spokane, Spokane Valley, Millwood, and Liberty Lake
 - Parts of unincorporated Spokane County

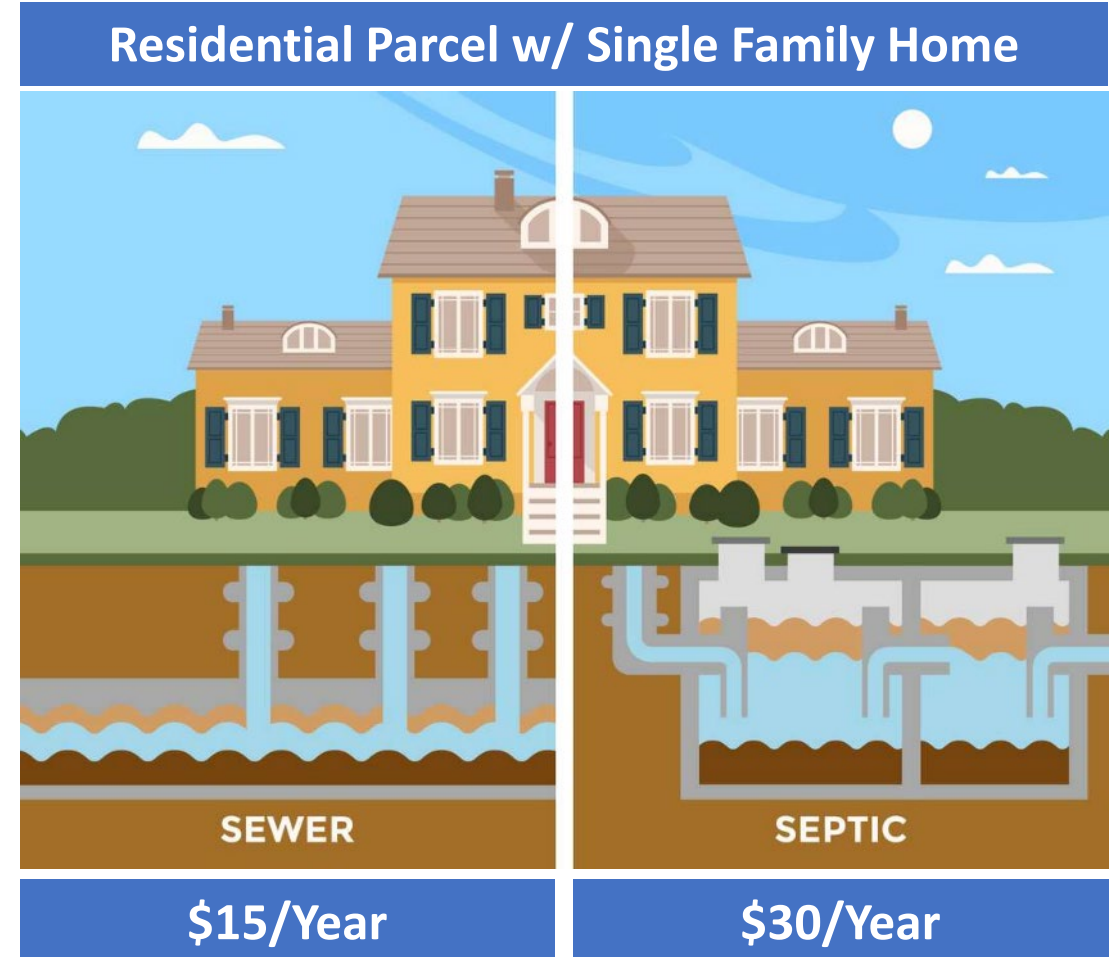


APA Fee Structure

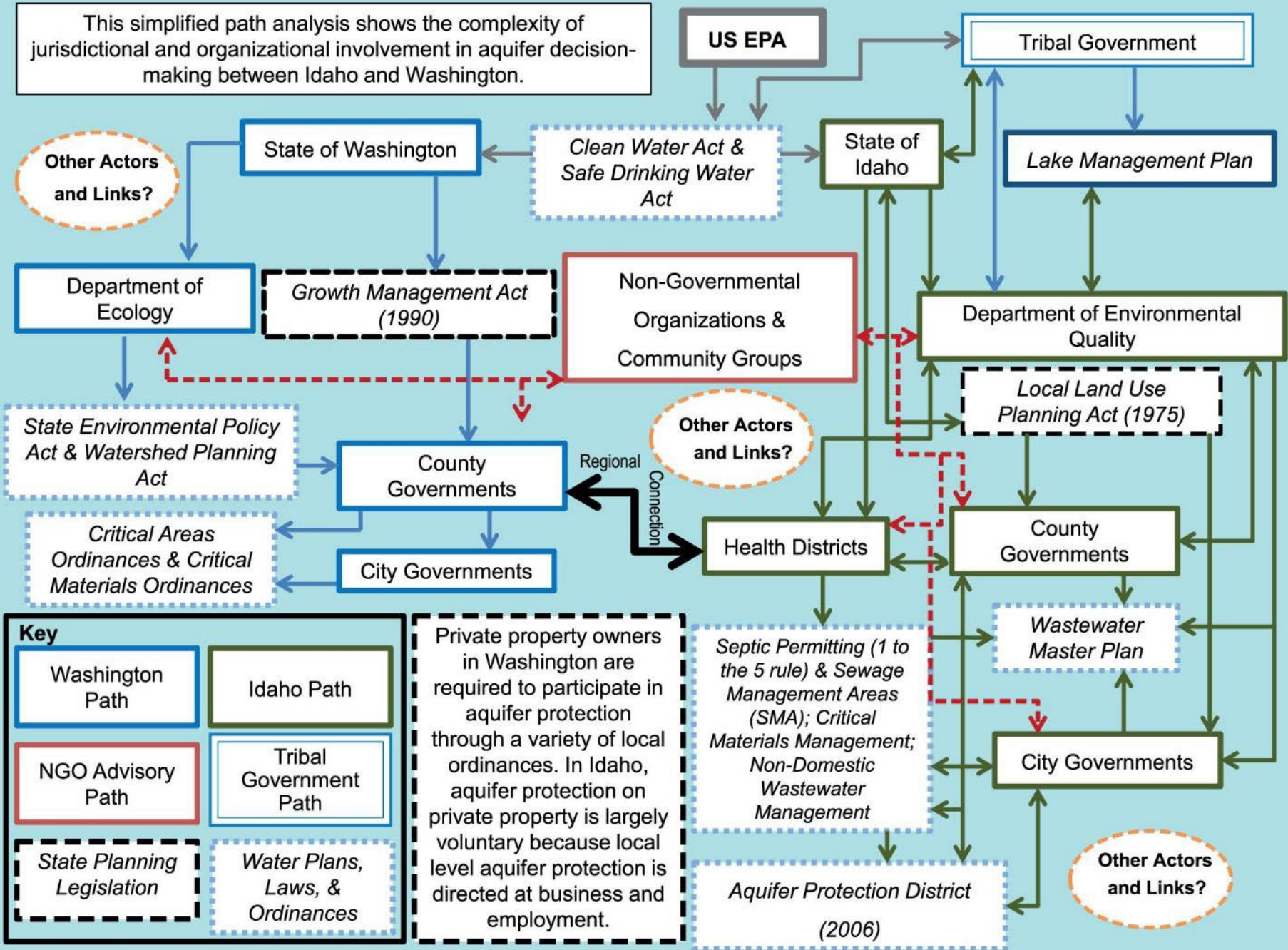
The SVRP APA fee structure has remained unchanged since 1985. West Plains APA will adopt same fees, IF voters approve the measure

- \$1.25 per month per equivalent residential unit for water
- \$1.25 per month per equivalent residential unit for onsite sewage disposal (e.g., septic systems)

Multifamily, commercial & Industrial pay based on water meter size



This simplified path analysis shows the complexity of jurisdictional and organizational involvement in aquifer decision-making between Idaho and Washington.



COMPLEX JURISDICTIONAL RESPONSIBILITIES

Figure from: Jessica R. Daniel, Sandra Lee Pinel, Jase Brooks "Overcoming Barriers to Collaborative Transboundary Water Governance," Mountain Research and Development, 33(3), 215-224, (1 August 2013)

Regional Collaboration with Purveyors

Spokane Aquifer Joint Board (SAJB)

- Formed 1995
- WA purveyors drawing from SVRP Aquifer
- To protect the public water supply by coordinating efforts, performing and sponsoring studies and investigations, and providing a discussion forum with respect to developing and implementing public water supply programs

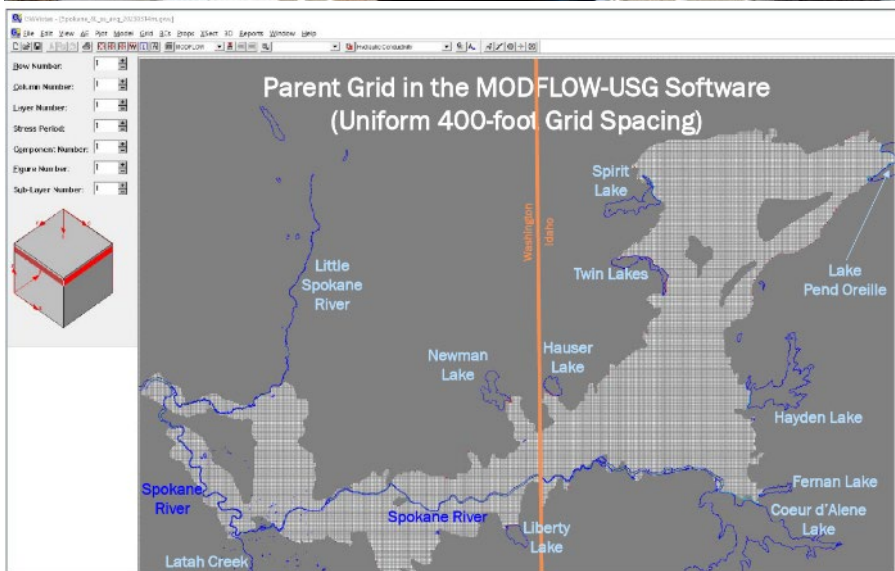
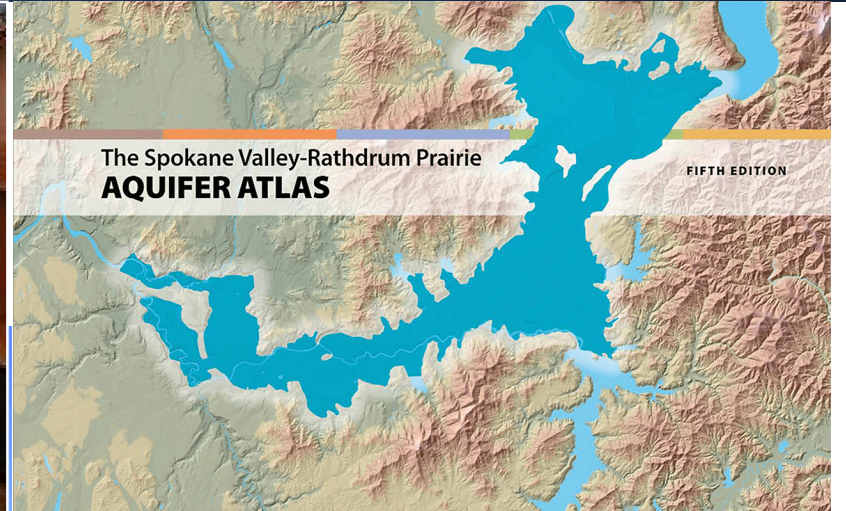


Idaho Washington Aquifer Collaborative (IWAC)

- Formed 2012
- ID & WA purveyors drawing from SVRP Aquifer
- To work together to maintain and/or enhance water quality and quantity for present and future generations



Regional Collaboration with Purveyors



Source: GSI Water Solutions and City of Spokane



Other great regional collabs



We protect
our River and Aquifer

Sweep up! Rake up! Pick up!

adopt-a-drain.org/wa



Got Waste? Want to Recycle? Put it in the right place!

SpoKane Kootenai Waste & Recycle Directory

WORKING TOGETHER TO PROTECT OUR RIVER AND AQUIFER



Outdoor Watering
Nerds

SPOKANE AND KOOTENAI COUNTIES



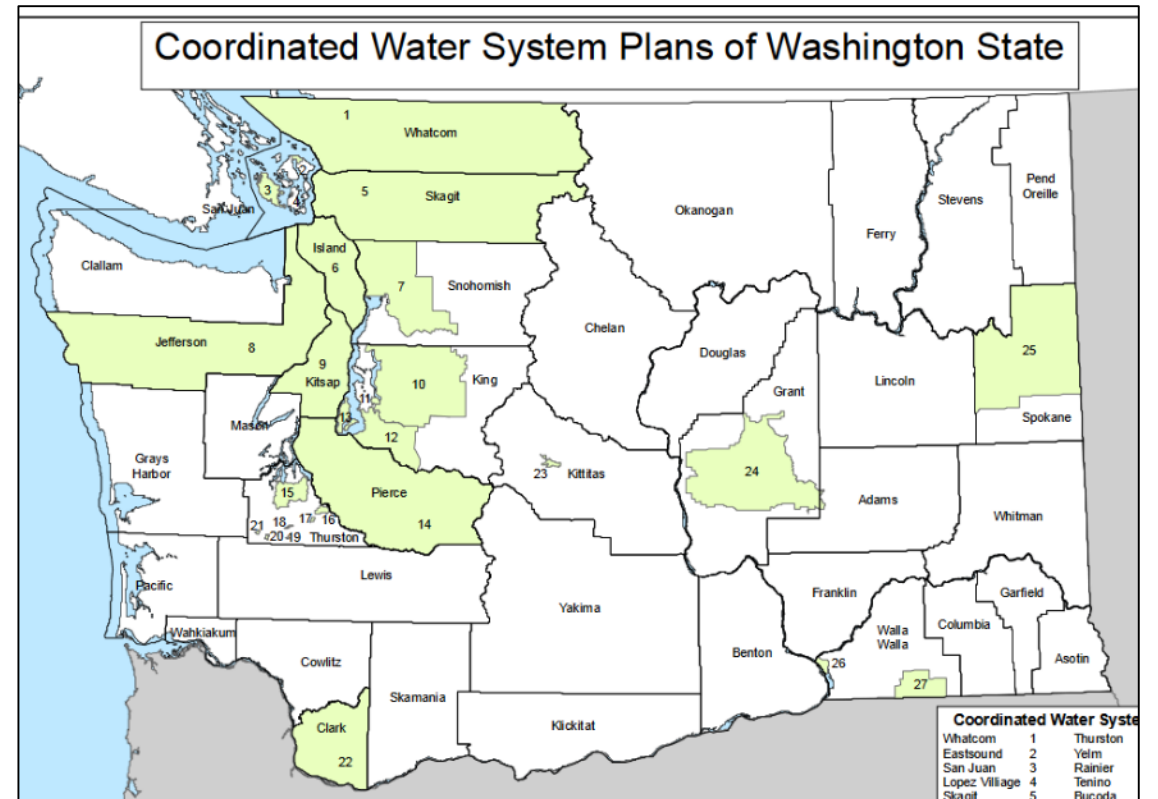
EnviroCertified

Coordinated Water System Plan (CWSP)

- **Public Water System Coordination Act of 1977 (RCW 70A.100)**

- Critical Water Supply Service Area (CWSSA) established by DOH or County to address water supply problems related to:

- uncoordinated planning,
- inadequate water quality, or
- unreliable service.



Coordinated Water System Plan (CWSP)

- **Public Water System Coordination Act of 1977 (RCW 70A.100)**

- Coordinated Water System Plan (CWSP) outlines how public water systems within the CWSSA will meet current and future water needs in the most efficient way.
 - Procedures to coordinate the planning of public water supply systems
 - Single plan or compilation of Water System Plans w/Regional Supplement



Coordinated Water System Plan (CWSP)

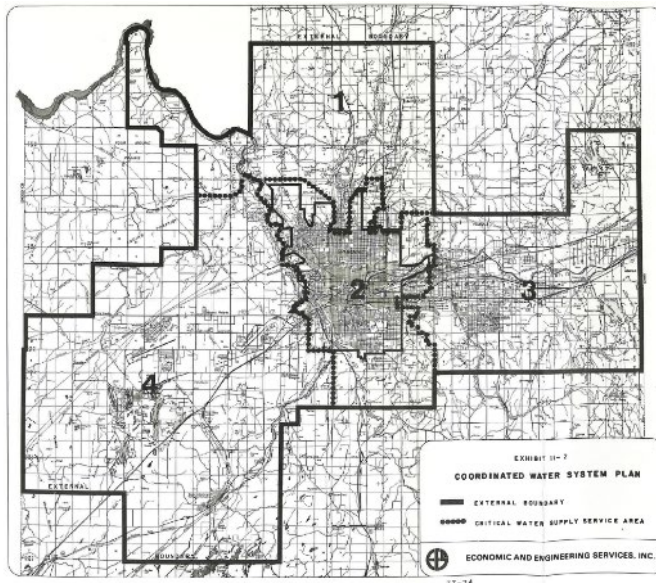
1978

Four original CWSSAs designated:

- North Spokane
- Spokane Valley
- West Plains
- City of Spokane

1982

Original CWSP



1989

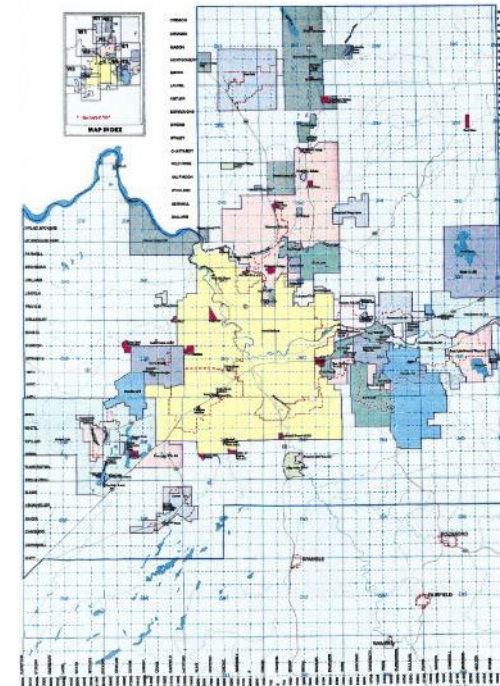
1st CWSP Update

1997

Original 4 CWSSAs abolished; new CWSSA designated

1999

2nd CWSP Update

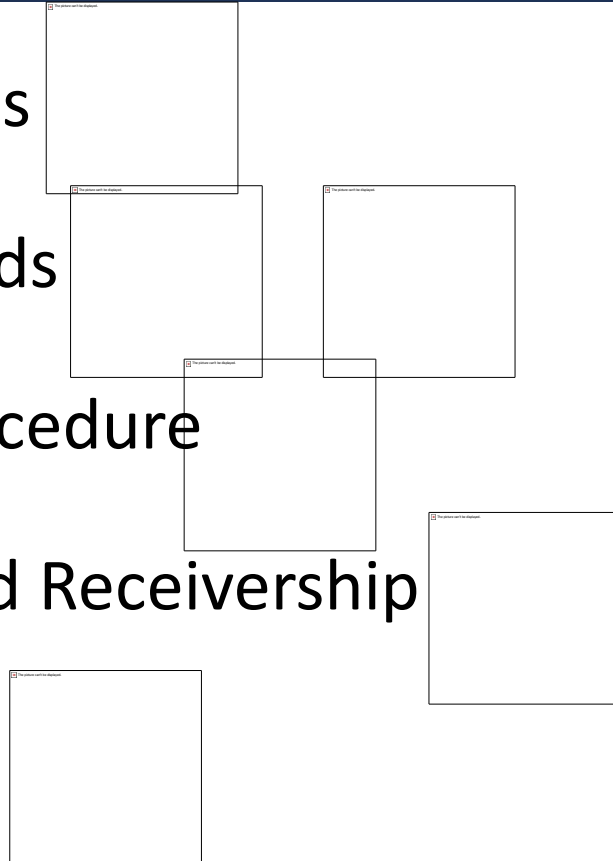


2025

3rd CWSP Update initiated by Board of County Commissioners per RCW 70A.100.060(6) and as set forth in Resolution 2025-0486

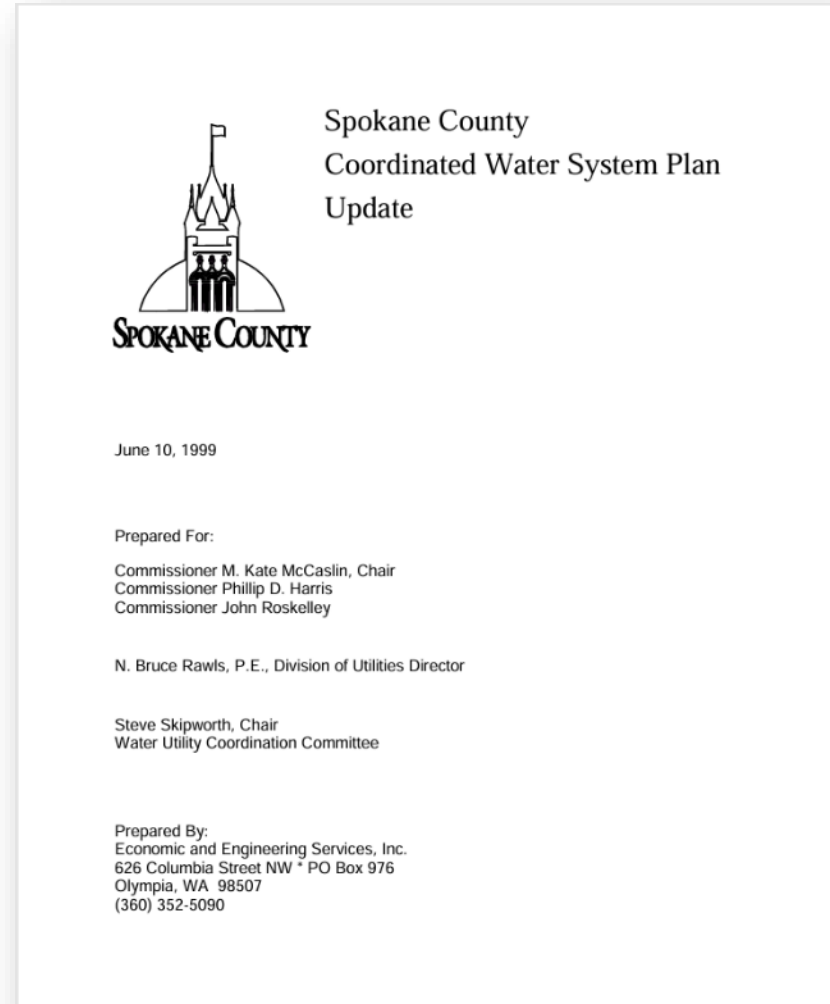
Coordinated Water System Plan (CWSP)

- Water Utility Service Areas
- Minimum Design Standards
- Utility Service Review Procedure
- Satellite Management and Receivership
- Regional Resource Issues
- Plan Implementation



Coordinated Water System Plan (CWSP)

- CWSP may also serve as the County's Water General Plan (RCW 36.94)
 - Assumes County has power to own/operate a water system
 - May be mandated to become receiver of failing system
 - Prior CWSPs approved as Water General Plan (assume this update will be as well)
- Requires another review/approval process
 - County Services Act (CSA) Committee review and recommendation
 - Planning Commission review and recommendation
 - BoCC adopts as the Water General Plan

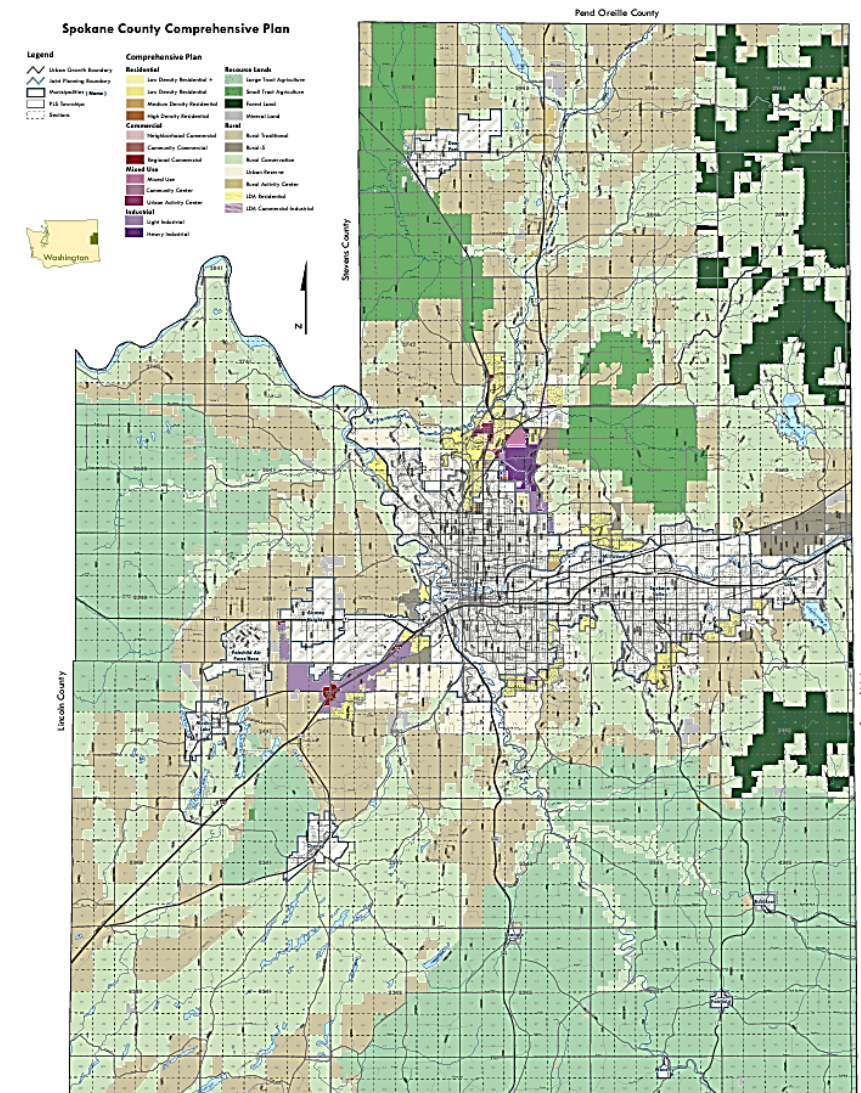


Comprehensive Planning

Growth Management Act (GMA)

RCW 36.70 (a)

- **Land Use:** shall provide for protection of the quality and quantity of groundwater used for public water supplies.
- Long-range planning uses water availability/quality for growth recommendations

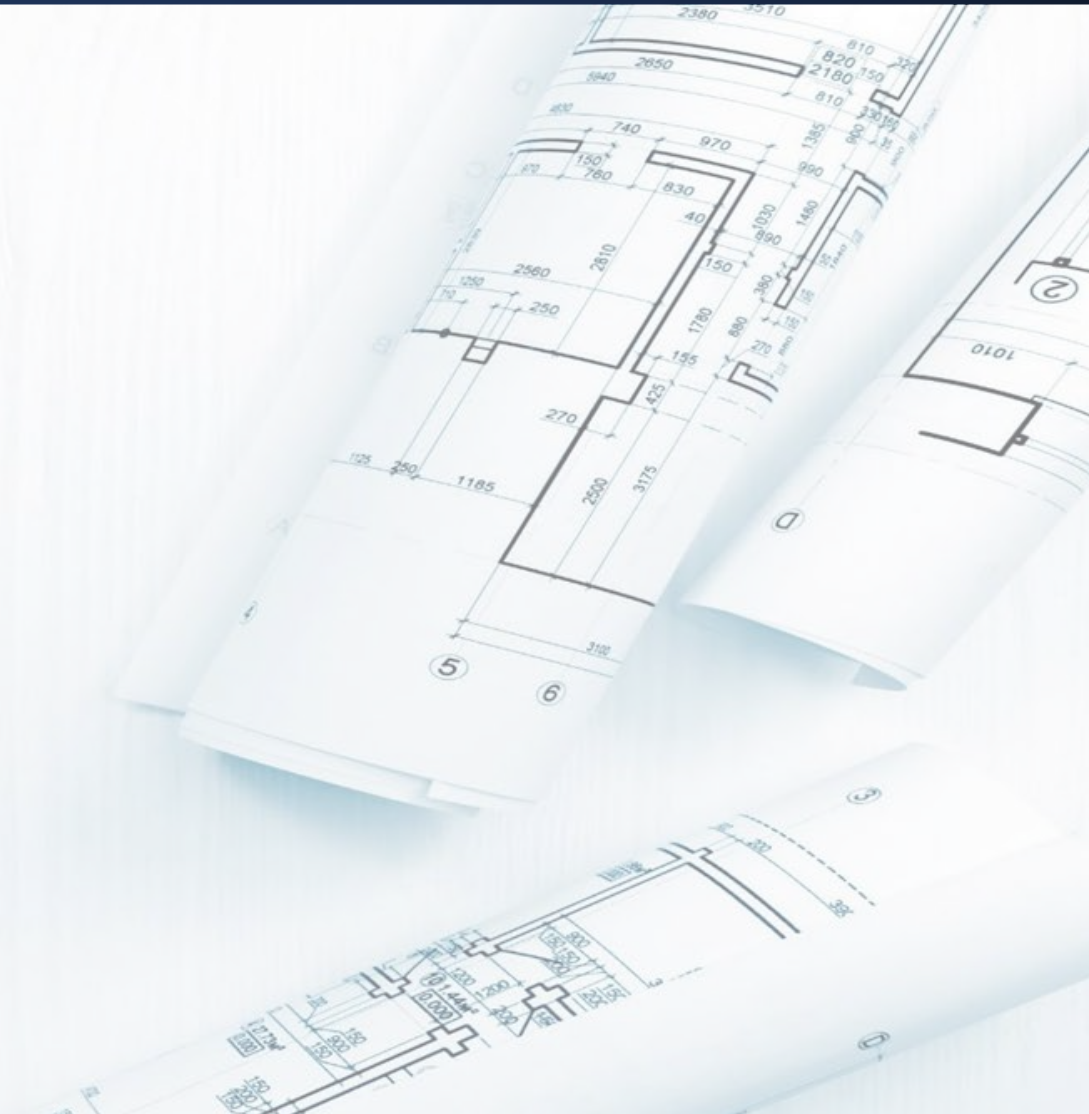


Comprehensive Planning

Growth Management Act (GMA)

RCW 36.70 (a)

- **Permitting:** building permits necessitating potable water shall provide evidence of an adequate water supply for the intended use of the building.
- Long-range planning (like permitting) is adding a requirement of capacity—assurance of supply—before plats are approved

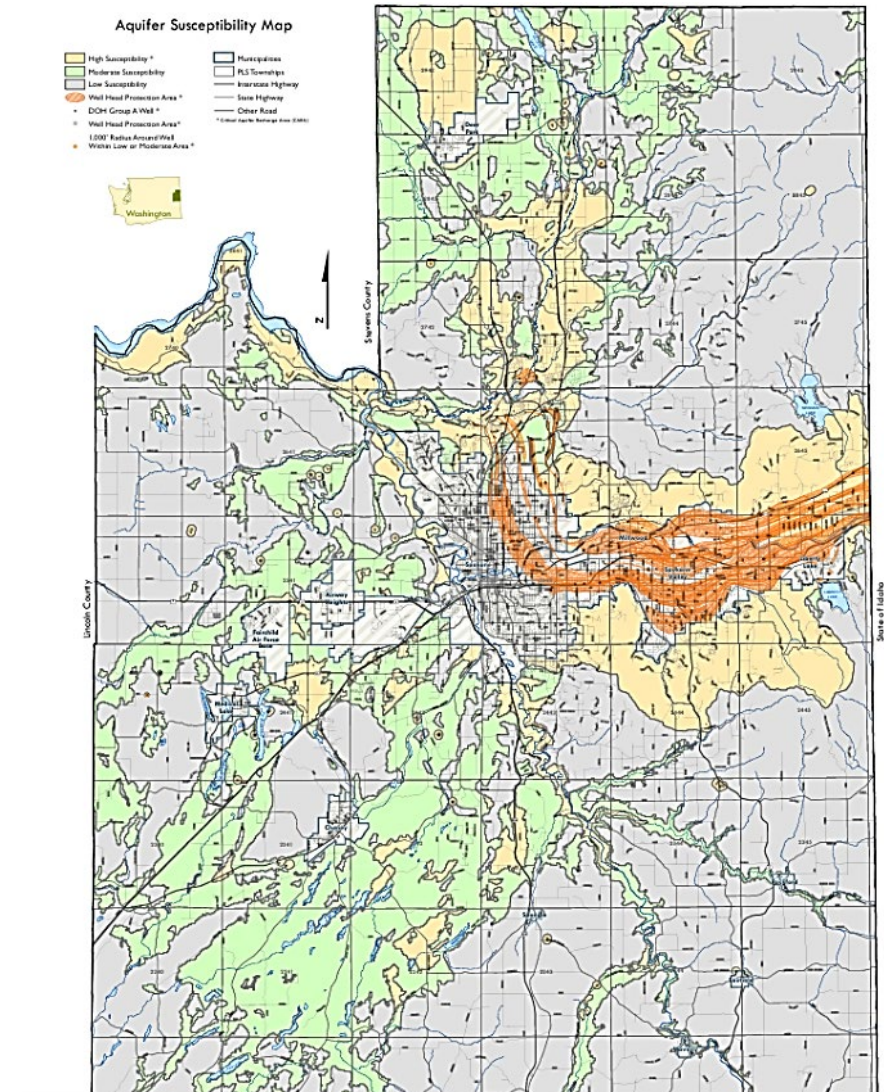


Comprehensive Planning

Growth Management Act (GMA)

RCW 36.70 (a)

- **Critical Areas:** Designate and protect critical areas, including critical aquifer recharge areas
- **Climate Element (*new*):** Address natural hazards worsened by climate change (e.g., flooding, drought) and identify strategies to ensure long-term water availability



Questions?



Contact:

Amy Sumner

Water Resources Manager

Spokane County

509-477-7578

asumner@spokanecounty.org