



April 7, 2026

Entech Engineering

Stacy Silva

*Sustainability & Special Projects
Manager*

Miranda Miller

Environmental Specialist

Service Line Inventories

What is the current status, and what should we be doing next?

Agenda Overview

- Regulatory History and Requirements
- What has changed? What has stayed the same?
- Overall Schedule and Upcoming Requirements
- Communication is Key!
- Funding Options



EPA | Safe Drinking Water Act

- 2015 Flint Michigan Water Crisis
- 2021 Revised Lead and Copper Rule
- 2023 Proposed Lead and Copper Rule Improvements
- 2024 Finalized Lead and Copper Rule Improvements



EPA | Lead & Copper Revised Rule (LCRR)

DATE: January 15, 2021 EPA Regulation

Focus on actions to address lead contamination in drinking water:

- Identify areas most impacted by lead
- Strengthen drinking water treatment requirements
- **Replace lead service lines**
- Improve risk communications
- Protect children in schools and childcare facilities

Enforcing Agency is the PA Department of Environmental Protection (PA DEP)



SLI | Basic Components

- Includes ALL service lines
- Categorize/classify each service line as one of these four:
 - Lead
 - Galvanized requiring replacement (GRR)
 - Non-lead
 - Lead Status Unknown
- Identify and track/update each service line material

(Note: both the utility-owned and customer-owned sides of a service line must be documented.)



Water System Sizes – Does it matter?

All community and Non-Transient Noncommunity water systems must provide an inventory:



- Greater than 5 service lines: [Use PADEP Service Line Inventory Form Excel Template 3930-FM-BSDW0042A](#)



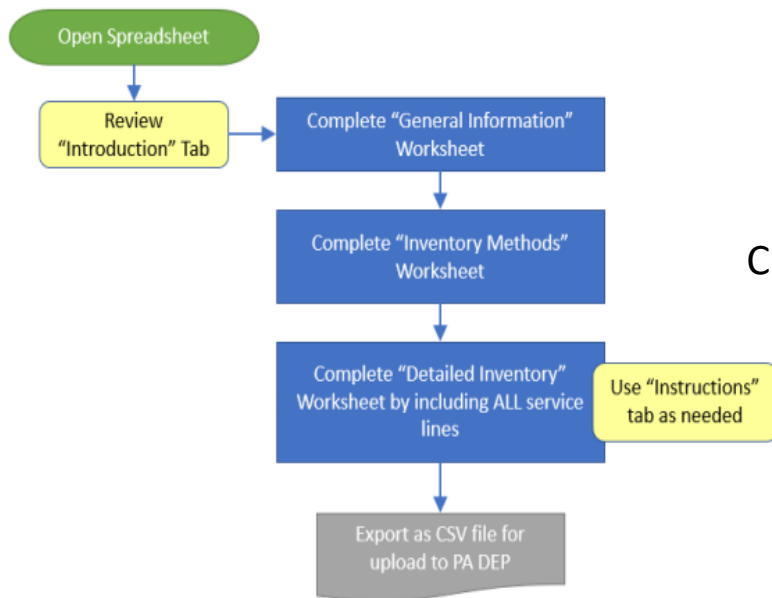
- 5 service lines and less: Use [Cover Form \(3930-FM-BSDW0042B\)](#) and [Service Line Inventory Detail Form \(3930-FM-BSDW0042C\)](#)
 - *A separate Detail Form is required per service line.
 - * Instructions for completing the forms is available in [3930-FM-BSDW0042](#)



- If an entity spans multiple PWSIDs, a separate inventory is required per PWSID/water system.

Complete or Create a SLI Database | Tools

Recommended Process:



PA DEP

- [PADEP LCRR Service Line Inventory Operator Training](#)
- [DEP Service Line Inventory Form Excel Template and Instructions 3930-FM-BSDW0119](#)

Customized

- Many communities are using customized databases to conduct inventory to allow for additional documentation and flexibility
- Must be compatible for upload to State Agency
- For those using their own database, please contact DEP at RA-EPDWLCR@pa.gov for the proper format



2024 Lead and Copper Rule Improvements (LCRI)

- Proposed November 2023
- Promulgated October 30, 2024; effective December 30, 2024
- Compliance date is **November 1, 2027**.

What changed, and what stayed the same?



2024 Lead and Copper Rule Improvements (LCRI)



- Replace all lead and GRR no later than 10 years after compliance date
 - Cumulative average annual rate of 10%
 - Possible eligibility for deferred deadlines
 - Partial SL replacements
- Replace lead connectors



2024 Lead and Copper Rule Improvements (LCRI)



Lowering the Lead Action Level

Lead trigger level removed and reduced the lead action level from 0.015 mg/L to 0.010 mg/L, effective November 1, 2027.

If a water system exceeds the lead action level, it is required to inform the public, take actions associated with corrosion control treatment (CCT), and employ public education measures to reduce lead exposure.



2024 Lead and Copper Rule Improvements (LCRI)

Lead Action Level Notices

- Tier 1 public notification for exceedance of the lead action level and copy of the Tier 1 public notification to the primacy agency and EPA no later than 24 hours after the system learns of the exceedance – effective October 16, 2024.
- Water systems with continually high lead levels will be required to conduct additional outreach and make filters, certified to reduce lead in drinking water, available to all consumers.

**IMPORTANT
NOTICE**



2024 Lead and Copper Rule Improvements (LCRI)

- Identify all unknown SLs by their mandatory SL replacement deadline
- Identify and characterize all connector materials
- Validation of non-lead SLs
- SL Replacement Plans
- Community outreach and education

SEGMENT 2 INFORMATION					
SEGMENT 2 MATERIAL	LEAD CONNECTOR UPSTREAM	INSTALLATION DECADE	INSTALLATION DATE	DIAMETER (IN INCHES)	NON-LEAD VERIFICATION 3
	NOT SURE				
S) UNKNOWN	YES	A) PRE-1901			A) RECORDS REVIEW
S) UNKNOWN	YES	A) PRE-1901			
S) UNKNOWN	YES	A) PRE-1901			
S) UNKNOWN	YES	A) PRE-1901			
D) COPPER	YES	A) PRE-1901			E) VISUAL INSPECTION AT 1
C) GALVANIZED	YES	A) PRE-1901			A) RECORDS REVIEW
D) COPPER	YES	A) PRE-1901			A) RECORDS REVIEW
D) COPPER	YES	A) PRE-1901			E) VISUAL INSPECTION AT 1
S) UNKNOWN	YES	G) 1951 - 1960	09/06/1952		A) RECORDS REVIEW
D) COPPER	YES	G) 1951 - 1960	07/25/1960		A) RECORDS REVIEW
C) GALVANIZED	YES	A) PRE-1901			E) VISUAL INSPECTION AT 1
S) UNKNOWN	YES	G) 1951 - 1960	05/03/1954		A) RECORDS REVIEW
S) UNKNOWN	YES	A) PRE-1901			
S) UNKNOWN	YES	A) PRE-1901			
S) UNKNOWN	YES	H) 1961 - 1970	05/02/1967		A) RECORDS REVIEW
S) UNKNOWN	YES	A) PRE-1901			
D) COPPER	YES	A) PRE-1901			E) VISUAL INSPECTION AT 1
S) UNKNOWN	YES	A) PRE-1901			
S) UNKNOWN	YES	A) PRE-1901			A) RECORDS REVIEW
S) UNKNOWN	YES	A) PRE-1901			
S) UNKNOWN	YES	A) PRE-1901			
S) UNKNOWN	YES	A) PRE-1901			



PA DEP Revised SLI Excel Template

PA DEP SLI Template Revisions/Changes

- Validation Pool Classification (PA DEP designation)
- Non-Lead Verification will show what is missing if one segment is unknown
- Split Line (Segments 1 and 2)
- SL materials – drop-down menu choices
- Non-Lead Verifications
- Connectors
- Cover Form – alternative lead ban information

SEGMENT 1 INFORMATION		EVER PREVIOUSLY LEAD	LEAD CONNECTOR UPSTREAM	INSTALLATION DECADE	INSTALLATION DATE	DIAMETER (IN INCHES)	NON-LEAD VERIFICATION 1
SEGMENT 1 MATERIAL		NOT SURE	NOT SURE				
S) UNKNOWN	NOT SURE	NO		G) 1951 - 1960		0.75	A) RECORDS REVIEW
S) UNKNOWN	NOT SURE	NO		G) 1951 - 1960		0.75	A) RECORDS REVIEW
S) UNKNOWN	NOT SURE	NO		G) 1951 - 1960		0.75	A) RECORDS REVIEW
CL UNKNOWN	NOT SURE	NO		G) 1951 - 1960		0.75	A) RECORDS REVIEW



Non-Lead Verification Status and Validation Pool

SERVICE LINE CLASSIFICATION	NON-LEAD VERIFICATION STATUS	LCRI SAMPLING TIER	VALIDATION POOL
<i>ANSWER ALL QUESTIONS</i>	<i>NOT APPLICABLE</i>	<i>ANSWER ALL QUESTIONS</i>	<i>NOT APPLICABLE</i>
Sort A-Z	Sort Z-A		
LEAD STATUS UNKNOWN	NO	TIER 5	NOT APPLICABLE
NON-LEAD	YES	TIER 5	NOT REQUIRED
LEAD STATUS UNKNOWN	NO, SEGMENT 1	TIER 5	NOT APPLICABLE
LEAD STATUS UNKNOWN	NO	TIER 5	NOT APPLICABLE
LEAD STATUS UNKNOWN	NO	TIER 5	NOT APPLICABLE
LEAD STATUS UNKNOWN	NO	TIER 5	NOT APPLICABLE
LEAD STATUS UNKNOWN	NO	TIER 5	NOT APPLICABLE
LEAD STATUS UNKNOWN	NO	TIER 5	NOT APPLICABLE
LEAD STATUS UNKNOWN	NO	TIER 5	NOT APPLICABLE
LEAD STATUS UNKNOWN	NO	TIER 5	NOT APPLICABLE
NON-LEAD	YES	TIER 5	NOT REQUIRED
LEAD STATUS UNKNOWN	NO	TIER 5	NOT APPLICABLE
LEAD STATUS UNKNOWN	NO, SEGMENT 1	TIER 5	NOT APPLICABLE
LEAD STATUS UNKNOWN	NO, SEGMENT 2	TIER 5	NOT APPLICABLE
LEAD STATUS UNKNOWN	NO	TIER 5	NOT APPLICABLE



Service Line Material Validation Pool

Validation of non-lead SLs

• Systems must validate the accuracy of their methods to categorize non-lead service lines in their inventory no later than 7 years after the compliance date (2034) by the end of the calendar year unless on shortened or deferred deadline.

- “Validation pool” for random visual verification is to include all non-lead SLs, excluding those installed after Federal, State, or local lead bans, visually inspected at a minimum of two points, or previously replaced.
- Systems may submit previous validation efforts in lieu of the LCRI requirements if they are at least as stringent as the requirements, and States must review and approve of these previous efforts. Waiver requests are due Nov. 1, 2027.



Service Line Materials (Segments 1 and 2)

- A) LEAD
- B) LEAD-LINED GALVANIZED
- C) GALVANIZED
- D) COPPER
- E) CAST IRON - LINED
- F) CAST IRON - UNLINED
- G) HDPE - HIGH DENSITY POLYETHYLENE
- H) PVC - POLYVINYL CHLORIDE
- I) BRASS
- J) CPVC - CHLORINE TREATED PVC
- K) PEX - CROSS-LINKED POLYETHYLENE
- L) ABS - ACRYLONITRILE BUTADIENE STYRENE
- M) PB - POLYBUTYLENE
- N) DUCTILE IRON
- O) ASBESTOS CEMENT
- P) OTHER NON-LEAD MATERIAL
- S) UNKNOWN
- T) UNKNOWN - NOT LEAD



Non-Lead Verifications

- A) RECORDS REVIEW
- B) MODELING/STATISTICAL ANALYSIS
- C) WATER SAMPLING (NO CCT)
- D) OTHER - ENTER IN COMMENTS FIELD
- E) VISUAL INSPECTION AT 1 ACCESS POINT
- F) CCTV INSPECTION INSIDE PIPE - FULL LENGTH
- H) MECHANICAL EXCAVATION AT 1 LOCATION
- J) MECHANICAL EXCAVATION AT 2 OR MORE LOCATIONS
- M) VISUAL INSPECTION AT 2 OR MORE ACCESS POINTS
- N) SWORDFISH
- O) HIGH CONFIDENCE IN RECORDS
- P) EMPL AFFIDAVIT/INST KNOWL



Connectors

CONNECTOR INVENTORY INFORMATION				
NUMBER OF CONNECTORS	CONNECTOR 1 MATERIAL	CONNECTOR 2 MATERIAL	CONNECTOR 3 MATERIAL	CONNECTOR 4 MATERIAL
<i>UNKNOWN</i>				
UNKNOWN	UNKNOWN NON-LEAD LEAD			



What is a Connector?

EPA definition:

Connector	Also referred to as a gooseneck or pigtail, a short segment of piping not exceeding 3 feet that can be bent and is used for connections between service piping, typically connecting the service line to the water main.
------------------	--

Must indicate the number of connectors and each connector's material as lead, non-lead, or unknown.

Connectors – EPA Clarifications

EPA Response: The LCRI does not require water systems to identify connector materials and locations in the field unless encountered; therefore, the rule does not require water systems to excavate to identify the presence of a connector. Please see the EPA response to comment code 7.2 in this *Response to Comments* document.

Water systems are not required to document connector materials and locations where the system's review of specified sources and lack of encounters during normal operations have not revealed whether there is or is not a known connector at the location.

- EPA's LCRI Comment Responses pages 1276, 1281-1282



Cover Page

SUPPLEMENTAL INFORMATION TO IMPORT DATA INTO THE PA SLI SPREADSHEET

PWS Type:	SELECT FROM LIST
Is the water system using an Alternate Lead Ban Date based on an ordinance, tariff or other legal document banning the use of lead prior to the PA lead ban date of 1/6/1991?	NO
Certification: <i>As the Responsible Official for this water system, I certify that I have reviewed the ordinance, tariff or other legal document banning the use of lead prior to the PA lead ban date of 1/6/1991, and I verify that service lines and connectors installed after the document's effective date(s) meet the legal requirements of that document. I have filed a copy of the applicable legal document in our system records, and it is available upon request.</i>	SELECT FROM LIST
Select the segments to which the Alternate Lead Ban Date applies:	SELECT FROM LIST
If an Alternate Lead Ban Date is declared, enter the date(s) below (mm/dd/yyyy format):	
Segment 1 Alternate Lead Ban Date:	
Segment 2 Alternate Lead Ban Date:	



You've submitted your SL inventory! What's next?

SERVICE LINE INVENTORY FORM

Inventory Summary Information				
PWS Name:				
PWSID:				
CLASSIFICATION SUMMARY				
	NON-LEAD	LEAD STATUS UNKNOWN	GALVANIZED REQUIRING REPLACEMENT	LEAD
NUMBER	1361	34808	924	3
PERCENTAGE	4%	94%	2%	0%
CLASSIFICATION SUMMARY BY SCHOOL/CHILDCARE				
	NON-LEAD	LEAD STATUS UNKNOWN	GALVANIZED REQUIRING REPLACEMENT	LEAD
Total Schools	0	11	0	0
Elementary Schools	0	8	0	0
Secondary Schools	0	0	0	0
All Grade Schools	0	3	0	0
Childcare Facilities	0	6	0	0

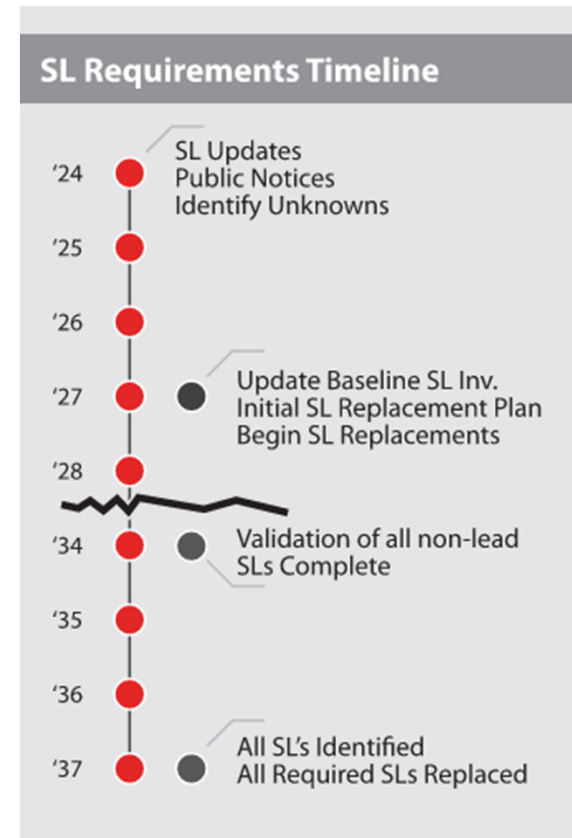
The following information will autofill based on inventory responses:

- Service Line Classification Summary – keep working on your unknowns and start planning to replace your lead and GRR
- Service Line Classification by School/Childcare Summary

Mark Your Calendar!

Upcoming Deadlines

- **Oct. 2024 and annually**
 - SL Inventory updates
 - Public Notifications
- **Nov. 1, 2027**
 - Baseline Inventory Submission
 - SL Replacement Plan
 - List of School/Child Care Facilities
 - Non-Lead SL Validation Waiver Request
- **Jan. 1, 2028**
 - Site Sample Plan



LCRI: School and Child Care Facilities



- List of schools and licensed child care facilities served by the PWSID.
 - Excludes schools and licensed child care facilities constructed or that had full plumbing replacement on or after Jan. 1, 2014 and are not served by a lead, GRR, or unknown SL.
- Annual public education in the schools and child care facilities on the list.
- Sample in all elementary schools and licensed child care facilities within the first 5-year testing cycle and sample secondary schools on request. Thereafter, sample schools and child care facilities upon request.
- Waivers available for specific conditions.

More information - [EPA's Fact Sheet](#)



Lead Service Line Replacement Plan | What are the Components?

All systems with at least one lead, GRR, or unknown SL must develop the SL replacement plan by the compliance date of November 1, 2027.



Lead Service Line Replacement Plan | What are the Components?

What is required in the SL Replacement Plan?



- Description of a strategy to identify the material of all unknown service lines in the inventory
- Standard operating procedure for conducting full SL replacement
- Communication strategy to inform customers before a full or partial lead or GRR SL replacement
- Procedure for customers to flush SLs and premise plumbing of particulate lead following SL replacement



Lead Service Line Replacement Plan | What are the Components?

What is required in the SL Replacement Plan? (cont.)

- Strategy to prioritize SL replacement
- Funding strategy for conducting SL replacements
- Strategy to inform customers and consumers about the plan and replacement program, and
- Identification of any legal requirements or water tariff agreement provisions that affect a system's ability to gain access to conduct full SL replacement



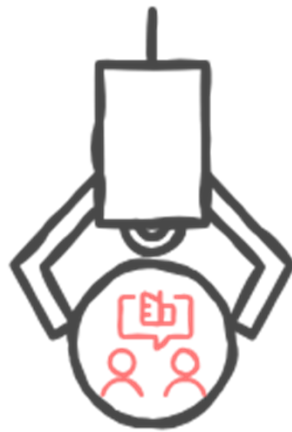
SL Replacement Plans must be updated annually and made available to the public.

Strategy to Identify the Material of All Unknown Service Lines



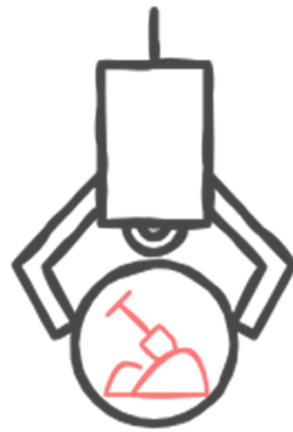
Records Review

Examine existing documents to find information.



Staff Interviews

Talk to water system employees for insights.



Mechanical Excavation

Dig up the ground to expose the service line.



Swordfish

Use of electric conductivity to assess SL material.



Statistical Analysis

Use data to find patterns and make predictions.

Records Review | Tools

This includes, but is not limited to the following:

- PA Lead Ban of 1991
- Water system maintenance records
- Tap Cards
- Ancillary regulations that affect pipe materials
- Ordinances
- Interviews with system experts and develop affidavits
- Development and Construction Plans
- Plumbing Records
- Special system wide projects - ex. Meter replacements
- Zillow review/ County records for age of homes



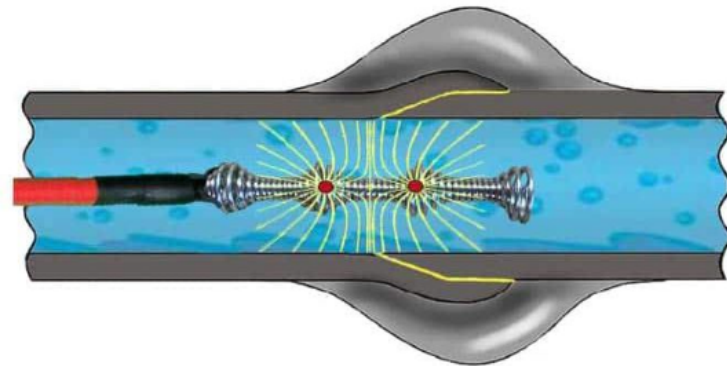
PA's Lead Ban applies to all plumbing, not just plumbing used for drinking water. The Lead Ban forbids the sale and use of leaded solder, flux, pipe and pipe-fittings. These products were to have been removed from sale by Jan. 6, 1991.



SLI | Additional Tools

Electro Scan's Swordfish

- May 2024 – PA DEP approved of Swordfish technology as stand-alone method of SL material identification
- Identifies SL material utilizing electronic conductivity via a probe run the length of the SL and accessed through the meter location (i.e., both utility-owned and customer-owned portions of the SL)



Strategy to Prioritize Service Line Replacements

- Sensitive Communities/Populations
 - Hospitals, Nursing Homes, Schools, Childcare Facilities, Apartment Buildings, Community Centers, Churches, etc.
- High Concentrations of Lead Service Lines
- High Concentrations of GRR Service Lines
- Areas of Old Water Mains or Elevated Corrosion Rates
- Allow time for scheduling (~45 days)



Communication Strategy to Customers

- Inform Customers and Consumers about the Service Line Material Identification and Replacement Program
- Inform Customers Before a Full or Partial Lead/GRR Service Line Replacement
- Collaboration/Partnerships with Real Estate Professionals
- Outreach mechanisms
 - Social Media
 - Town Halls
 - Door hangers/mailers
 - Web sites



Funding Strategy for Conducting Service Line Replacements

- Water System Source of Funding for Ongoing SL Material Identifications and SL Replacement Program
- Federal, State, and Local Funding Mechanisms
- Financing Statement to Homeowners from the Water System
- Replacement costs – include filter pitchers, follow-up sampling



Legal Requirements for Full Service Line Replacement

- Access Agreements/Right-of-Entry Documentation
- Water Tariff Agreements
- Ordinances/Resolutions to Allow Access
- Real Estate Clauses for Transfer of Deed Notifications
- Documenting Customer Refusals



Access
Agreements



Water Tariff
Agreements



Ordinances/
Resolutions



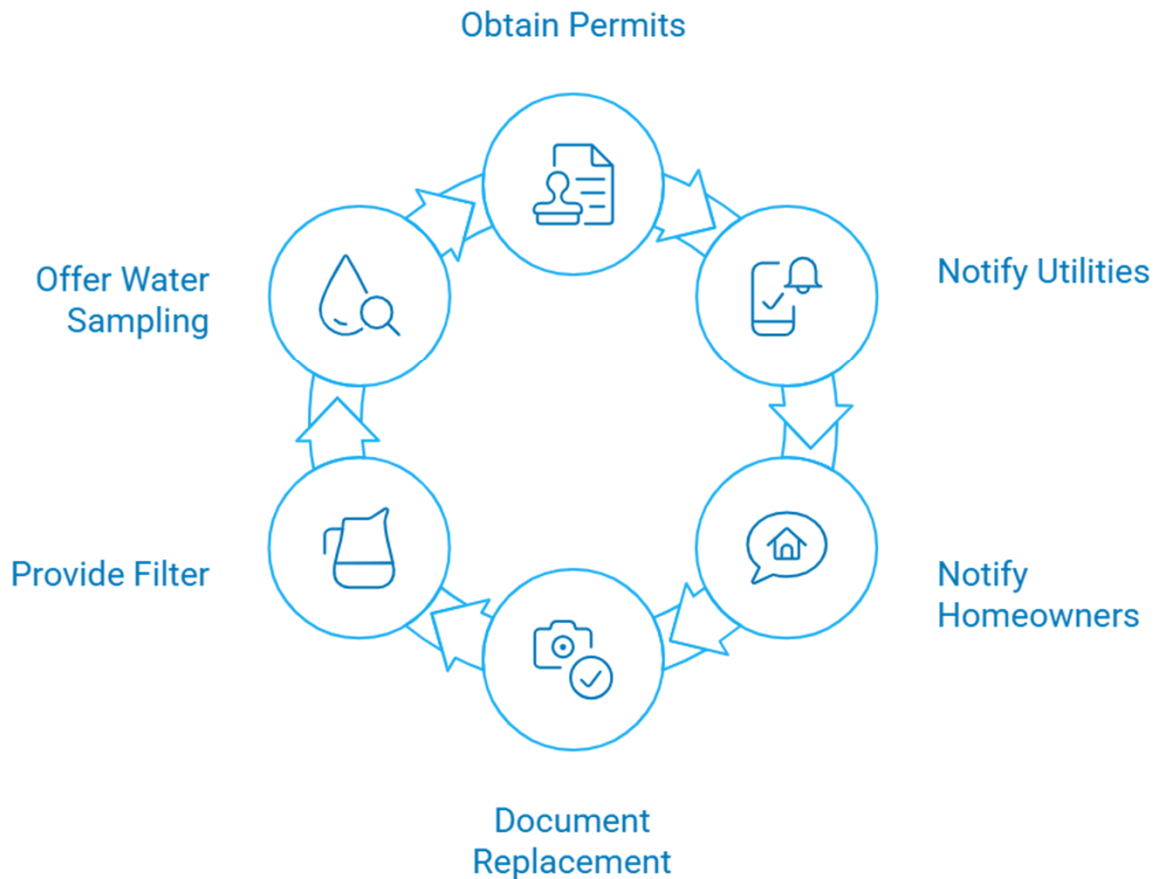
Real Estate
Clauses



Documenting
Refusals



Standard Operating Procedure for Conducting Full Service Line Replacements



- Obtain Permits
- One-Call Notifications and Flagging/Marking
- Homeowner Notification
- Documentation/Photographs (Before and After) with Customer Sign-Off
- SOP for Replacement to Contractors
- Provide Homeowner with a Pitcher Filter or Point-of-Use Device
- Offer Water Sampling 3 – 6 Months after Completion



Customer Standard Operating Procedures Following a Service Line Replacement

- Service Line Flushing
- Premise Plumbing Flushing
- Use of Filter Pitcher and Replacement Filters
- How to Request Follow-up Sampling from the Water System



What are the Lead Service Line Replacement Requirements Today?

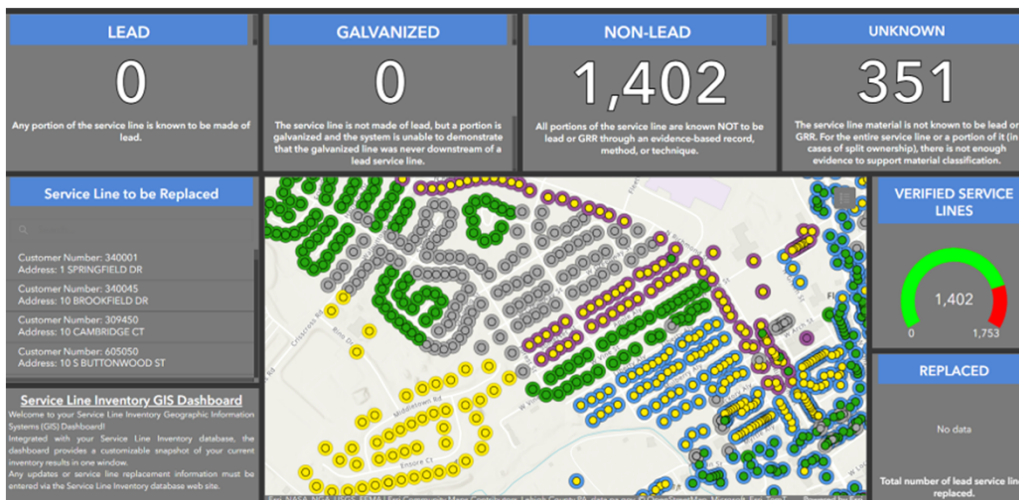
- Risk Mitigation Measures([RMM](#)) are required NOW
- Applies to any water system that conducts LSLR, including galvanized requiring replacement service lines, or that removes a lead pigtail, gooseneck, or connector

RMM Requirements Include:

- Property owner notification prior to putting line back in service
- Provide property owner with a pitcher filter or point of use device prior to putting line back in service
- After completion of work Utility must offer to conduct sampling



Lead Service Line Replacement Plan | Planning Tools



• Replacement

- SOP – document procedures for replacement and customer flushing of SL

Data management and GIS tools to help with planning and tracking (Dashboard/Data Collection Forms)

- Can also be a great tool for customer education and engagement!



Communication Is Critical



Do I need to share my SLI with the Public?

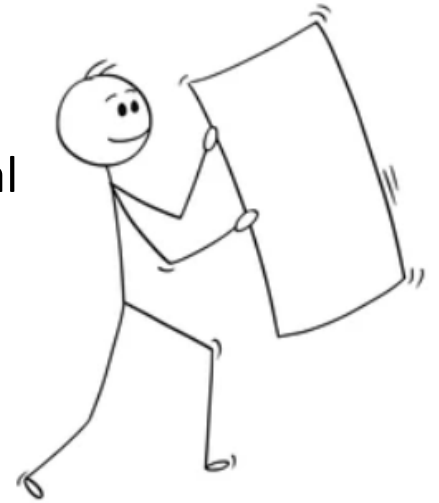
Per 40 CFR **141.84**(a)(5) & (a)(6)

For systems with LEAD, GRR, or Lead Status Unknown Service Lines

You **must** make the inventory publicly available and include a locational identifier for lead service lines and GRR. Water systems serving more than 50,000 people **must** provide inventories on-line.

For systems with only Non-Lead Service Lines

You can provide a written statement, in lieu of the inventory, that your distribution system has no lead service lines or GRR service lines along with a general description of all applicable sources used to make that determination.



Customer Notifications

Following completion of the initial service line inventory, if a water system has determined that there are lead, galvanized requiring replacement (GRR), or lead status unknown service lines, the federal LCRR (40 CFR §141.85(e)) required that the water system provide notification to all persons served by one of those connections **annually until there is no longer any lead, GRR, or unknown service lines.**

Templates are available on PA DEP's eLibrary.

Consumer Notification of **Lead** Service Line:
PA DEP Doc. ID 3930-FM-BSDW0100

Consumer Notification of **GRR** Service Line:
PA DEP Doc. ID 3930-FM-BSDW0101

Consumer Notification of **Unknown** Service Line:
PA DEP Doc. ID 3930-FM-BSDW0102



SLI and the Consumer Confidence Report (CCR)

Per 40CFR 141.153(h)(8)(ii)



For systems with LEAD, GRR, or Lead Status Unknown Service Lines

CWSs **must** indicate how the public can access the service line inventory information in their CCR.

For systems with only Non-Lead Service Lines

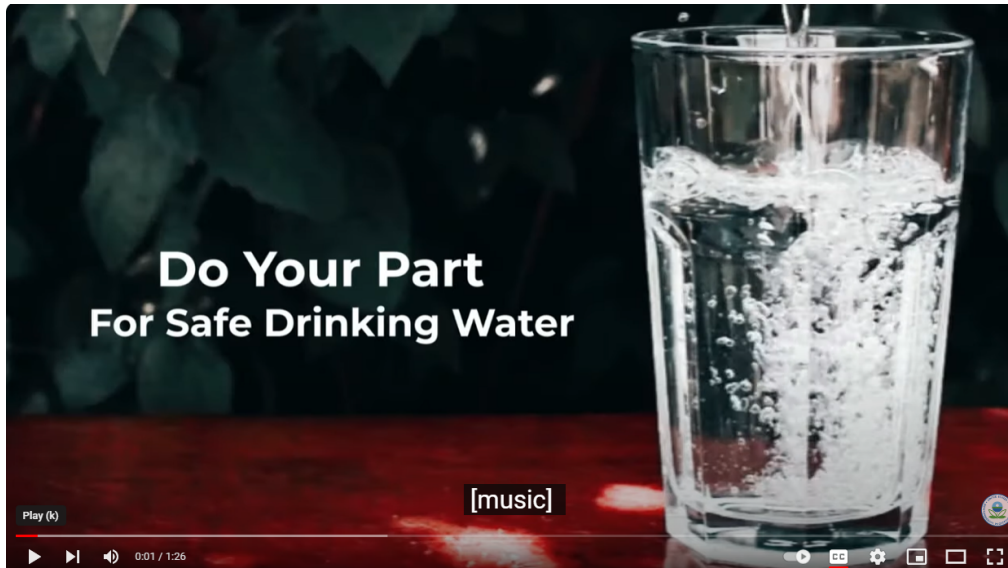
CWSs **must** include a statement that a service line inventory contains no lead service lines and instructions on how to access the information.



Avoid the Confusion!



Communications | EPA Guidance



EPA Communication Guidance:

- [EPA Engaging with the Community on LSLs](#)
- [AWWA Lead Service Line Communication Guide](#)
- [Video: English: Identifying Service Lines for Customers \(1 min 26 sec\)](#)



Communications With Community

Existing communications may include:

- Inserts with bills
- Quarterly newsletter
- Town Hall/Community Meeting
- Website
- Email blasts
- Texts
- Involve schools and local organizations
- Social Media – Facebook, LinkedIn, Twitter, YouTube



Customer Surveys - Example

For information on how to verify the material of your water service line please see the attached informational guide.

11. What material is your water service line as it enters your home (directly through the wall)?
- Copper Galvanized
- Brass Lead
- PVC/Plastic Unknown
12. How did you verify your water service line type?
- Visual Inspection Plumbing Records
- Scratch Test Plumber or Other Qualified Professional
13. Does your home's water plumbing have lead joints (solder)?
- Yes No Unsure
14. Do you have a point of entry filtration system on the water service line into your home (Whole House Filter/Treatment, Water Softener or RO Unit)?
- Yes No Unsure

If the water service line was located and the material identified, please take 1-2 photographs and submit with this form.

Homeowner Signature _____ Date _____


Informational Guide on Verifying Your Service Line Material

The image to the right represents a simple configuration of a water service line. The Authority is interested in the portion labeled "Private Side" for our purposes. This is the portion owned by the customer from the curb stop to the meter.



Below are five images of service line materials you may encounter, along with methods that will help you confirm the material. You will need a key or coin and a magnet.

Types of Water Pipes (Service Lines)

<p>Lead – A dull, silver-gray color that is easily scratched with a coin. Use a magnet - strong magnets will not cling to lead pipes.</p> 	<p>Plastic – White, rigid pipe.</p> 
<p>Galvanized – A dull, silver-gray color. Use a magnet - strong magnets will typically cling to galvanized pipes.</p> 	<p>Brass – Dark reddish brown to a light silvery color. Older pipes may be corroded and may contain lead.</p> 
	<p>Copper – The color of a penny.</p> 

What to do if you suspect lead:

- Locate the service line pipe as it enters your home from an exterior wall or floor.
- If the pipe is a dull, silver-gray color, carefully scratch the pipe (like you would a lottery ticket) with a key or coin. If the scratch turns a shiny silver color, it could be lead or galvanized.
- Place the magnet on the pipe. If a magnet sticks, it is a galvanized pipe.
- Wash hands after inspecting the pipe.

AWWA Toolbox

[Lead Communications - American Water Works Association \(awwa.org\)](http://awwa.org)

Editable Brochure
Printable Brochure
Utility Brochure Samples

Editable FAQ
Printable FAQ

Printable Home Plumbing Graphic

Editable Newsletter

Editable Utility CCR Text
Utility CCR Sample

Editable Bill Insert

Editable Web Text

Editable Social Media Posts

Editable Testing for Lead Text

EPA Compliance Sample Collection
Procedure for Homeowners

Editable Using Filters Text

Editable Finding a Plumber Text

Editable Cleaning Aerators Text

Printable Cleaning Aerators
Document



Collaborations



Collaborations with local conservation groups and neighboring municipalities can help with communications and investigative efforts!



The Lebanon Valley Conservancy
protecting cultural, historical & environmental resources



How Much Will This Cost Me?

- Inventory costs to determine materials (ex. soft digs)
- Full line replacements (private and utility side)
- Homeowner's responsible for privately-owned portion of service line
- Importance of developing a funding strategy



Lead Services through PENNVEST

BIL DWSRF Lead Service Line Replacement Supplemental

BIL

- Must be DWSRF eligible **AND be a LSLR project or associated activity *directly connected*** to the identification, planning, design, and replacement of LSL
- A galvanized service line is considered a lead service line if it ever was or is currently downstream of any lead service line or service line of unknown material
- The replacement of lead goosenecks, pigtails, and connectors are eligible expenses, whether standalone or connected to a lead service line
- Must replace entire LSL, unless a portion was already replaced
- Partial LSL replacements are not eligible from any DWSRF source
 - May not replace only the public side, if the private side is also an LSL

Best Practices and Lessons Learned

- Communication is Key
- Ask questions to PA DEP
- Document, Document, Document
- Think outside the box
- Partnerships with vendors, community groups, etc.
- Keep going!!!!



QUESTIONS?

Stacy Silva

Entech Engineering

Sustainability & Special

Projects Manager

ssilva@entecheng.com

Miranda Miller

Entech Engineering

Environmental Specialist

mcmiller@entecheng.com

Thank You!