

**Engineering,
Go Figure**

**CNA Engineers,
Minneapolis Central
City Tunnel**

Read more on Page 3





INCLUDED IN THIS ISSUE:

- Member Project:
Minneapolis Central City Tunnel
- Get Involved: ACEC/MN Committees & Forums
- ACEC Research Institute:
Minnesota Impact
- Meet our Affiliate Members
- EEFA Winter Social
- Engineering Excellence Awards Gala
- Minnesota Transportation Conference & Expo
- Upcoming Events

ACEC/MN

Wells Fargo Place, Suite 2725
30 East 7th Street
St. Paul, MN 55101
952-593-5533
www.acecmn.org

Need assistance with your membership? Contact Kelly Smeltzer at kelly@acecmn.org



CNA Consulting Engineers

Project: Minneapolis Central City Parallel Tunnel

Photographer: Craig Eckdahl

Description: Originally built from the 1880's to the 1930's, the Minneapolis Central City Tunnel System conveys stormwater from the downtown area of Minneapolis to the Mississippi River. Spanning 4,400 feet long, 10-15 feet equivalent in diameter and 80 feet underground, the new Central City Parallel Tunnel was added to combat the issue of surcharge and surface flooding overwhelming the current system during heavy rainfall events. The \$55 million tunnel needed to greatly increase the capacity of the existing system, which was at largest 8 feet in diameter, while keeping it in use throughout the duration of the project. Taking advantage of the existing geological conditions of St. Peter Sandstone and Platteville Limestone, innovative geotechnical designs created limestone roof spans up to 40 feet wide supported exclusively by rockbolts, creating an economical construction. The tunnel features unique cathedral shapes, long-span junction structures and large flat-back box tunnels. The project also included a new access shaft, connections to existing tunnels and shafts and an enlargement of the Mississippi River outlet in Mill Ruins Park. A cast-in-place concrete liner was placed to prevent future infiltration, exfiltration and bedrock erosion. With its innovative design and utilization of existing geological conditions, the Central City Parallel Tunnel provides an economical and effective solution to provide much needed relief to the city's existing tunnel system.

GET INVOLVED: ACEC/MN Committees & Forums

Joining a committee and attending forums are unique opportunities for members to get involved: to make an impact on the professional and business climate, to network with colleagues, to share information and best practices, and to gain visibility among peers, agencies, clients and other professional organizations with similar interests. Serving on a committee is also a great pathway to the ACEC/MN Board!

Any ACEC/MN member firm representative may join a committee or forum. If you are interested, **please reach out to Kelly Smeltzer, kelly@acecmn.org**.

Government Affairs Committee & Forum

The Government Affairs Committee provides input for the Council's Government Affairs activities; monitors legislation introduced at the State and Federal level, as well as rules and policies promulgated by state administrative agencies.

Transportation Committee & Forum

The Transportation Committee serves as a liaison, engages in dialogues, presents issues of concern, problem solves, and builds/improves relations with MnDOT and other state agency partners and works together on transportation related issues. The Transportation Committee has four active subcommittees: Alternate Delivery, Metropolitan Council, MnDOT, Small Business

Minnesota Structural Engineers Association (MNSEA)

MNSEA represents structural engineering firms throughout the state of Minnesota and is a resource to improve the quality and the level of practice of Structural Engineering through active involvement with public safety issues, continuing education, civic involvement, collaboration with government and private industry, as well as providing a opportunity to communicate with fellow structural engineers. MNSEA also has two subgroups - the Young Member Group (YMG) and the Emergency Response Committee (SEER).



GET INVOLVED: ACEC/MN Committees & Forums

Design Technology Forum

This forum focuses on best practices within and across CADD applications, providing a voice to consultants as customers of CADD software and collaborating with agencies to develop, support, and promote strategies for the adoption of consistent standards. The Design Technology Forum also hosts training sessions for using design software - watch the ACEC/MN calendar for those events as they become available.

Energy and Natural Resources Forum (ENR)

This forum is designed to bring together professionals within the Energy and Natural Resources practice areas to discuss common challenges, opportunities, and potential solutions to sector-specific business issues, as well as ideas about how ACEC Minnesota might engage in addressing those concerns. ENR members also provide input to ACEC/MN's advocacy efforts.

HR Forum

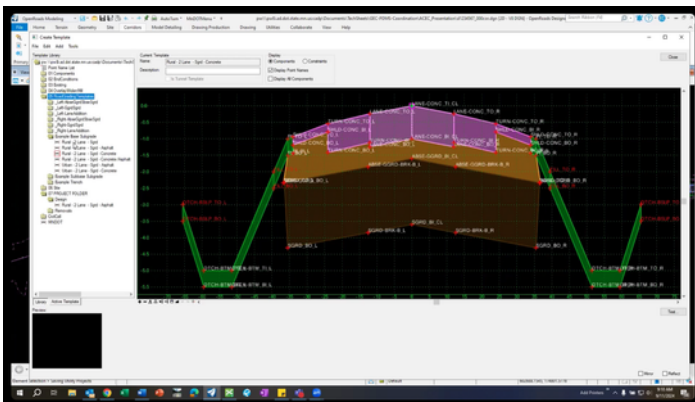
This forum brings together engineering firm HR professionals to discuss the business issues and common challenges unique to their specific practice area. Topics of discussion include Talent Acquisition, Retention & Engagement, Diversity & Inclusion, Change Management, Policy, Compliance, & Procedure

Risk Management Forum

This forum provides a meaningful resource and forum for decision makers at member firms and affiliates to be informed at a deeper level regarding issues or areas presenting the greatest risk to firms.

Young Professionals

Our young professional network offers growth, networking and career development opportunities. This group holds diverse monthly events, including leadership panels, advocacy learning events, project and site tours, college outreach, and exciting activities like mini golf or axe throwing!



Design Technology Forum:
ORD / GIS Training - Earthworks



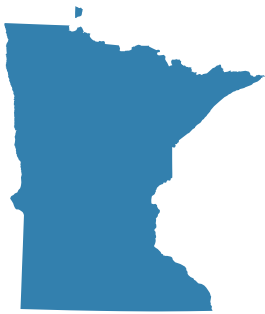
Young Professionals Fall 2022 Tour:
MnDOT I-35W Stormwater Storage
Facility

ENGINEERING'S ECONOMIC IMPACT

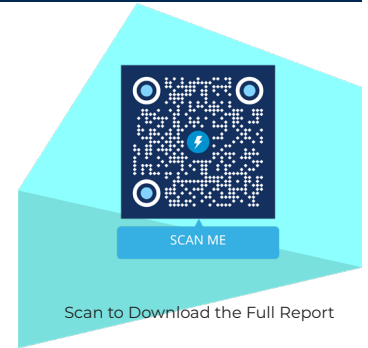
What is the Economic Assessment of the Engineering + Design Services Industry Report?

Each year the ACEC Research Institute releases its annual Economic Assessment and Forecast for the engineering and design industry. The report aims to describe, measure, and analyze the economic significance of the Engineering and Design Services industry and demonstrate the inextricable partnership between engineering, architects, and other design services to deliver the built environment of the United States.

By the Numbers: Minnesota



- \$8.1B Contributed to GDP
- \$2B Federal Taxes Collected
- \$728M State & Local Taxes Collected
- 83,800 Jobs Supported
- \$7.5B Total Wages Supported



What is the Economic Impact of the Engineering and Design Industry in the United States?

- Total 2023 U.S. Economic Contribution (GDP): \$656 billion 4.7%
- Total A/E Industry Revenue: \$436 billion 5.5%
- Direct Economic Contribution: \$251 billion 4.7%
- Total A/E Supported Jobs: 5.6 million workers 3.4%
- Average Wages: \$109,300 4.3%
- Total Tax (Federal, State & Local) Collections: \$135 billion 6.0%

The ACEC Research Institute's mission is to deliver knowledge and business strategies that guide and elevate the engineering industry and to be the leading source of knowledge and thought leadership for creating a more sustainable, safe, secure, and technically advanced built environment. The ACEC Research Institute is an independent 501c3 non-profit organization.



26,000 ACEC Partner Firms annually claim R&D credits, receiving over \$11,200,000,000!

We're deeply proud to have helped so many thousands of firms take advantage of their rightful credits and incentives, translating to **billions of dollars of opportunity**.

You alone know how to run your business, and it's our mission to make that work easier. With over 20 years of experience, **our experts consist of former governors, senators, congressmen, and cabinet members**, all possessing a deep understanding of your industry and its challenges. Our inside knowledge means greater foresight into the industry's changes, potential legislative impacts, and an ability to keep you well-positioned for whatever the future holds.

We excel at assisting businesses with the tools and insights they need to thrive. Through **remote talent solutions, innovative technologies like Generative AI, and credits & incentives**, we've been fostering the growth and innovation of American businesses for over two decades.

Our professionals use a **rigorous scientific methodology** along with cutting-edge AI technologies to deliver actionable strategies that drive measurable results.

Case Study:

Structural Engineering Firm

Annual Rev. \$7,000,000

\$156,000

Results in Federal Credits

Qualifying Activities:

- Determine alternate means of assembling or fastening component parts of a structure
- Integrating product and material transportation systems into functional design of the structure
- Determining alternative structural designs
- Develop engineering designs



Kiely Scott | Associate Director
kiely.jones@alliantgroup.com • 713.483.0831
alliantgroup.com



Scan the QR
code and book an
appointment.

Meet our Champion Affillate Members



The **ACEC Life/Health Trust** is a non-profit Association Health Plan governed by a board of Trustees elected by ACEC Life/Health Trust Member firms. Our mission is to provide exclusive, high value health care benefits to ACEC Member firms to support the health and well-being of their employees and families.



Aktion Associates is a national software reseller and IT infrastructure provider for companies in the Architectural, Engineering & Construction, Distribution and Manufacturing industries.



At **alliantgroup**, our mission is to assist U.S. companies in leveraging federal and state tax credits, incentives, and deductions. We offer top-tier resources tailored to fuel growth and innovation, no matter the industry.



CBIZ is a leading provider of financial, insurance and advisory services to businesses throughout the United States. Financial services include accounting, tax, government healthcare consulting, transaction advisory, risk advisory, and valuation services.



We'll get you there.

CPAs | CONSULTANTS | WEALTH ADVISORS

CliftonLarsonAllen (CLA) is a professional services firm that provides a wide range of integrated services, including audit, tax, wealth advisory, digital solutions, outsourcing, and consulting.



KRAUS-ANDERSON[®]
Insurance

Kraus-Anderson Insurance is a full-service independent insurance agency. Our specialized Architects & Engineers Practice Group is dedicated to the design and engineering community. We help our clients identify, mitigate, and effectively transfer their risk, so they can focus on their profession.



Sunbelt Business Advisors and True North Mergers & Acquisitions is the Midwest's leader in both mainstreet and lower-middle-market business sales. Whether you are \$1-10M, or \$10-150M in revenue, our proven processes focused on Net Proceeds will allow you to Maximize your Life's Work.



U.S. CAD, an ARKANCE company, provides solutions that empower AEC professionals to drive innovation with digital tools. Their mission is to support the AECO community's digital transformation, investing in the right solutions today to build a better world for tomorrow.

Meet our Partner & Supporter Affiliate Members



Blaze Credit Union is dedicated to serving the engineering community in Minnesota. Our vision is "to deliver member-driven service that is unparalleled by any other financial institution".



Boulay works with closely-held businesses, public companies and individuals who are, or who aspire to be financially successful.



Chartwell's expertise in financial advisory, corporate finance, and valuation services is focused on the unique needs of middle market companies. Our dedicated AEC team provides services to more than 50 companies in the industry.



Coleman & Erickson is a group of skilled attorneys with experience representing businesses engaged in architecture, engineering and concrete construction as well as litigation and general business law.



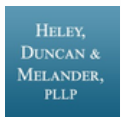
Elliott Parker's mission is to connect top engineering, architecture, and construction talent with industry-leading companies, fostering growth and success for both.



Enterprise Fleet Management helps firms with 20-200 vehicles in their fleet reduce their total cost of fleet ownership through strategic vehicle acquisition, operating cost management, and resale maximization.



Gallagher is a global leader in insurance, risk management & consulting services, helping clients face challenges and providing effective solutions.



Heley, Duncan & Melander delivers innovative, sophisticated legal and business solutions for its clients. A 15-lawyer firm representing engineers and others in the design and construction professions.



Holmes Murphy is an insurance broker, our architects and Engineering team is focused on providing comprehensive consulting for design professionals in the insurance space.



HUB International Great Plains is a full-service national insurance broker offering a broad range of insurance and financial products to its customers.



Kata Consulting is a business management consulting firm serving the AEC Industries. We specialize in operational improvement services for small to mid-sized Engineering Firms & Trade Contractors.



Kristine A. Kubes is the principal of the **Kubes Law Office**, serving design and construction professionals. She helps clients strengthen their businesses, concentrating her work on design defense/litigation and proactive construction counseling.



Lockton's design and construction practice is an industry leader in providing insurance for large engineering, architectural and construction firms. Specializes in creating customized solutions in risk management, insurance, employee benefits consulting and retirement services.



The Minnesota Builders Exchange (MBEX) is a nonprofit trade association with a mission of helping its members grow their businesses through the exchange of plans, the sharing of knowledge and the creation of powerful industry connections



Meagher & Geer is a full-service law firm engaged in numerous practices including representation of design professionals.



Midwest Select Contracting are a construction management, planning and environmental consulting firm solving complex challenges through innovative technologies and industry expertise to implement resilient infrastructure that improves lives.



Redpath and Company helps clients make more informed decisions that contribute to their financial well-being by providing proactive, innovative, and value-driven CPA and advisory services for closely-held businesses, private equity, government entities, and nonprofit organizations.



Environmental remediation, natural resource restoration, water monitoring, hazardous material spill clean-up, geotechnical and drilling services, and environmental waste management for private and public entities, **Rock Leaf Water Environmental** provides emergency and planned services to entities large and small.



Stambaugh Ness is a multi-discipline, professional services firm serving clients nationally with a strategic focus on the architecture and engineering, professional services, construction and real estate, and manufacturing industries.



Young Environmental specializes in water and natural resources management and planning, water resources engineering, stormwater management, environmental compliance and permitting, project management, and stakeholder engagement.

EEFA Winter Social

On December 12th, Engineering Education Foundation of America (EEFA) held its first annual Winter Social at the University Club on Summit Ave. in Saint Paul.

Despite a blast of Minnesota cold, over 75 volunteers, donors, and members of partner organizations joined us for this celebration.

EEFA Workforce committee chair, Jeff Rhoda, HDR, congratulated EEFA Task Forces and the Scholarship Committee for their accomplishments over the last year.

Also speaking at the Winter Social was Dan Meckes, CEO of Crawford, Murphy & Tilly, who currently serves as Vice Chair of the ACEC National Executive Committee. He congratulated EEFA volunteers and donors for their efforts to build the engineering workforce and also shared updates from ACEC National.

We want to thank all of our volunteers, the EEFA Board & Advisory Council, and of course our event sponsors and foundation donors! We're looking forward to another year of collaboration and fantastic EEFA programming!

[Interested in donating to EEFA?](#)
[See this link for more information.](#)



Thank you to our
EEFA Winter Social Sponsors!

NORTHERN LIGHTS SPONSOR



**BOLTON
& MENK**

NORTH POLE SPONSOR



NORTH STAR SPONSORS

Mead & Hunt





2025 Engineering Excellence Awards

Friday, February 21st, 2025 | A'BULAE, St. Paul

[Click here to get your tickets!](#)



MUSIC BY
SONIC DREAM

19 AMAZING
EEA PROJECTS

GUEST EMCEE
STEVE PATTERSON

THANK YOU TO OUR SPONSORS!

BAR SPONSOR



HAPPY HOUR SPONSOR



MUSIC SPONSOR



ALLIANT

PLATINUM SPONSORS



GOLD SPONSORS

COLEMAN &
ERICKSON, LLC

Kimley»Horn



BRONZE SPONSORS

Kraus-Anderson Insurance
SRF Consulting Group

The Minnesota Transportation Conference & Expo brings together professionals dedicated to advancing transportation.

Attend thought-provoking panels, connect with peers, and explore the solutions that are shaping the future of our infrastructure. Join us for this can't-miss opportunity to learn, network, and innovate!

Premier Sponsors



Lounge Sponsor



Lanyard Sponsor



Delegate Bag Sponsor



Gold Sponsors



Platinum Sponsors



2025 MTC&E Keynote Speakers

Day 1 - Wednesday, March 19th



Dan Oblinger:
Leadership from the Ledge - What Hostage Negotiators Know about Communicating Under Pressure

Dan Oblinger is a veteran hostage negotiator, author, and international keynote speaker. Since 2008, he has been translating basic principles of leadership, listening, and negotiating for private sector clients. He focuses his practice by

Day 2 - Thursday, March 20th



Aaron Davis:
Perform Like A Champion

Aaron Davis is a professional speaker, coach, trainer and attitude expert. His personal experience taught him the importance of a Champion Attitude and his life since has ingrained the value of attitude and what can be learned from it. Aaron is known for his captivating & high-energy talks on the power of a championship attitude. Through his journey as a cancer survivor, his experience as a

member of the 1994 Nebraska football national championship team, and his achievements as an author, Aaron has learned firsthand the importance of maintaining a positive outlook on life personally and professionally.

serving consulting engineering and construction management companies and executives. Dan's keynotes, workshops, books, and coaching send him around the world to help people become excellent listeners and negotiators.

ACEC/MN Events & Education

2025 is starting strong for ACEC Minnesota with a mix programming covering leadership, technical skills, advocacy and more!

Make sure you get to our biggest events of the year like the [Engineering Excellence Awards Gala](#) on February 21st, and the [MN Transportation Conference & Expo](#) March 19th-21st. You'll also want to check out Smarter Not Harder, Emerging Leaders Training Series, Day at the Capitol, and save the dates for more great events in May and June.

As always, keep an eye on our [calendar page](#) - new events are added all the time, and we should have some fun new things coming later in 2025!



February 4th

[ACEC/MN Young Professionals & WTS - Politics in Engineering & Transportation](#)

February 21st, 2025

[Engineering Excellence Awards Gala](#)

February 26th & March 5th, 2025

Smarter Not Harder:

- [Preparing Processes for AI / Removing Waste \(2/26\)](#)
- [Process Mapping & Bottlenecks \(3/5\)](#)

March 6th, 2025

[ACEC/MN Day at the Capitol](#)

March 19-21, 2025

[MN Transportation Conference & Expo](#)

April 1, 8, 15 & 22, 2025

[Spring Emerging Leaders Training Series](#)

May 6, 2025

[Engineering Ethics, presented by Kristine Kubes](#), Kubes Law Office

May 7 & 8, 2025

PSMJ Project Management Bootcamp

May 13, 2025

MNSEA Annual Trade Show & Seminar

May 15, 2025

ACEC/MN Annual Meeting & Vendor Showcase

June 12, 2025

EEFA Scholarship Golf Tournament
Oak Marsh Golf Course

June 2024

Agency Forecasting Seminar (virtual)