



Philanthropy Missouri

2024 Annual Report

WHO WE ARE

Founded in 1970, Philanthropy Missouri (formerly known as Gateway Center for Giving) is a statewide association of funders and philanthropic partners that inspires thoughtful action and great impact in Missouri.

We facilitate connections and provide programming and resources to help our Members and partners serve their communities, strengthen the sector, and advance opportunities for all Missourians to thrive.

**PhilMO is where philanthropic leaders belong;
we can make a bigger impact together!**

Vision

We envision a thriving and equitable Missouri, served by a collaborative, purpose-driven, and effective philanthropic sector.

Mission

To equip, connect, and energize our Members and partners for thoughtful action and greater impact.

Values

→ **Belonging**

We cultivate relationships and build community where individuals and institutions are understood, respected, and invited to contribute.

→ **Courageous Leadership**

We inspire the sector to challenge norms and mobilize resources to advance opportunities to thrive in Missouri.

→ **Equity**

We believe identity should not predict outcomes for Missourians and use that lens to shape our work and influence philanthropic practice.

→ **Impact**

We create an environment of shared learning to forward a strategic, collaborative, and equitable philanthropic sector.



After officially moving at the end of 2023, the PhilMO team took 2024 to settle in to our new headquarters at the Delmar DivINe (5501 Delmar Blvd – Suite A310, St. Louis, MO 63112). Located in St. Louis City’s West End neighborhood, the space is a community-focused effort to transform of a long-vacant hospital facility into mixed-use space that supports social sector collaboration.

To be responsive to our statewide membership and support staff, we continue to utilize fully remote and flexible work schedules. If you’d like to connect at the Delmar DivINe, just give us a shout first!

OUR 2024 LEADERSHIP

The PhilMO Leadership team includes staff, Board of Directors, Committees and Working Groups of the Board, and Network Member-Advisors.

Staff



Michelle Miller
CEO



Amy Wescott
Vice President



JoJo Weatherspoon
Program &
Learning Manager
**departed Fall 2024*



Chelsey Banaskavich
Operations &
Technology Manager



Carla Brown
Operations
Associate

Board of Directors



Wendell E. Kimbrough
ARCHS
Chair



Winter Kinne
Community
Foundation of the Ozarks
Vice Chair



Barbara Carswell
YouthBridge Community
Foundation
Treasurer



Vianey Beltran
Wells Fargo Foundation
Secretary



Sarah Bowman
PNC



Elke Buckland
The Saigh Foundation



Greg Burris
United Way of the Ozarks



Rita Cortés
Menorah Heritage Foundation



Kiesha Hammock
United Way of
Greater St. Louis



Emily Koenig
St. Louis County Children's
Service Fund



Deena Lauver Scott
Missouri Foundation for
Health



Laura Horwitz
Horwitz-Friedman Charitable Trust
JF Roblee Foundation



Rebekah Miller
Lutheran Foundation of St. Louis



Robin Smith
The DeBruce Foundation



Gwen Wurst
J.R. Albert Foundation

**THANK
YOU!**

2024 Committees

Audit Committee

Vianey Beltran | Wells Fargo Advisors
Elke Buckland | The Saigh Foundation
Stacy Clay | First Bank
Vander Corliss | United Way of Greater St. Louis

Engagement Committee

Sarah Bowman | Chair | PNC Bank
Greg Burris | United Way of the Ozarks
Emily Koenig | St. Louis County Children's Service Fund
Marissa Rosen | Trio Foundation of St. Louis
Treena Thompson | Lutheran Foundation of St. Louis
Robin Smith | The DeBruce Foundation
Chelsea Zabski | Missouri Foundation for Health

Executive Committee

Wendell Kimbrough | Chair | ARCHS
Winter Kinne | Vice Chair | Community Foundation of the Ozarks
Vianey Beltran | Secretary | Wells Fargo Foundation
Barbara Carswell | Treasurer | YouthBridge Community Foundation

Finance Committee

Barbara Carswell | Chair | YouthBridge Community Foundation
Meghan Connell | Skaggs Foundation
Kiesha Hammock | United Way of Greater St. Louis
Stephanie Herbers | St. Louis City Senior Fund
Marissa Wickam | Commerce Bank

Governance Committee

Steve Brawley | Co-Chair | ARCHS
Deena Lauver Scotti | Co-Chair | Missouri Foundation for Health
Amy Best | Bank of America
Rita Cortés | Menorah Heritage Foundation
Laura Horwitz | Horwitz-Friedman Charitable Fund
Winter Kinne | Community Foundation of the Ozarks

Programs & Services Committee

Rebekah Miller | Chair | Lutheran Foundation of St. Louis
Teletia Atkins | Missouri Foundation for Health
Nya Grimes | Ameren
Stacy Harris | Delta Dental
Bradley Herschend | Herschend Family Foundation
Cassandra Kaufman | Saint Louis MHB
D-Lori Newsome-Pitts | Ameren
Gwen Wurst | J.R. Albert Foundation
Heather Zoromski | Darr Family Foundation



share your
interest in
serving

PhilMO flourishes when Members lead the Board, Committees, and Networks. Learn more about PhilMO service [here](#). Share your interest in leading [here](#). (Links also accessible via QR code above.)

NEW

NEW WAYS TO LEAD: Network Member-Advisors

In 2024, PhilMO established "Networks" to increase connectivity and provide unique learning opportunities among groups of PhilMO Members who:

- (1) Are similar by funder type, funding interest, geographic location, or personal or organizational identity;
- (2) Convene at least twice annually and meet year-over-year;
- (3) May receive customized services, such as an online Network discussion group or custom Network news brief; and
- (4) Are supported by PhilMO staff and Member-Advisors, who partner with staff in shaping Network offerings.

Funder Geography

- **KCMO**
Member-Advisors to be established
- **STL**
Member-Advisors:
Bridget Flood, Incarnate Word Foundation
Nikki Martinez, St. Louis Community Foundation
- **SWMO**
Member-Advisors:
Sarah Moody, Missouri Foundation for Health
Heather Zoromski, Darr Family Foundation

Funding Interest

- **Early Childhood Funder Network**
Supported by Emerson & PNC Bank
Member-Advisors to be established
- **Public Policy & Advocacy Funder Network**
Supported by Economic Opportunity Funders, Tax Equity Funders, and Rockefeller Foundation
Member-Advisors to be established
- **Rural Funder Network**
Supported by United Philanthropy Forum
Member-Advisors:
Amy Stringer Hessel | Anonymous Funder
Emily Stuart | Marillac Mission Fund
Alice Wingo | Community Foundation of the Ozarks

Funder Type

- **Corporate Funder Network**
Member-Advisors:
Matthew Blakely, Reinsurance Group of America
Alex Dixon, United Way of Greater St. Louis/Spire
- **Family Foundation & Donor Advised Fund Network**
Member-Advisors:
Anne E. McGregor, McGregor Fund / Neighbor Company
Marissa Rosen, Trio Foundation of St. Louis

Identity-Based

Sponsorship and Member-Advisors to be established

- **Executive Network**
- **Funder of Color Network**
- **Program Staff Network**



MEMBER ORGANIZATIONS

Grantmaking Members

Ameren Missouri
Anonymous Foundation
ARCHS
Bank of America
Bayer
Boniface Foundation
Brown Sisters Foundation
Cardinals Care
Central Bank of the Ozarks
Commerce Bank
Community Foundation of Northwest Missouri
Community Foundation of the Ozarks
Crawford Taylor Foundation
Darr Family Foundation
DeBruce Foundation
Delta Dental of Missouri
Emerson
Enterprise Mobility Foundation
First Bank
Forrester Family Fund
FORVIS Foundation
Goldstein Family Foundation
Great Southern Bank
Greater Kansas City Community Foundation
Herschend Family Foundation
Horwitz-Friedman Charitable Fund
Incarnate Word Foundation
James S. McDonnell Foundation
Jewish Federation of St. Louis
JF Roblee Foundation
JPMorgan Chase & Co.
KC Chamber Foundation*
Light a Single Candle Foundation
Lutheran Foundation of St. Louis
Marillac Mission Fund
McGregor Fund
Mildred, Herbert, and Julian Simon Foundation
Missouri Foundation for Health
Missouri's Children's Trust Fund
Neighbor Company*
PNC
Productive Living Board*
Regional Business Council
Regions Bank
Reinsurance Group of America
Robert J. Trulaske, Jr. Family Foundation
Ryan and Amanda Stanley DAF
Saint Louis MHB
Shepard McCaskill Foundation
Silver Dollar City Foundation
Simmons Bank
Skaggs Foundation
St. Louis City Senior Fund
St. Louis Community Foundation
St. Louis County Children's Service Fund
St. Louis Office for Developmental Disability Resources
The Boeing Company
The Community Foundation of Northwest Missouri
The Pillsbury Foundation
The Saigh Foundation
TKD Foundation
Trio Foundation of St. Louis
United Way of Greater St. Louis
United Way of the Ozarks
Vowels Stovern Wealth, LLC
Washington University - St. Louis Initiatives*
Wells Fargo Foundation
YouthBridge Community Foundation

**PhilMO Members
invested more than
\$725M in Missouri
grants in 2024.**

Associate Members & Regional Partners

Community Health Commission of Missouri
Foundation Source
Gladiator Consulting
Limitless Horizons*
Mercy Investment Services
The Rome Group

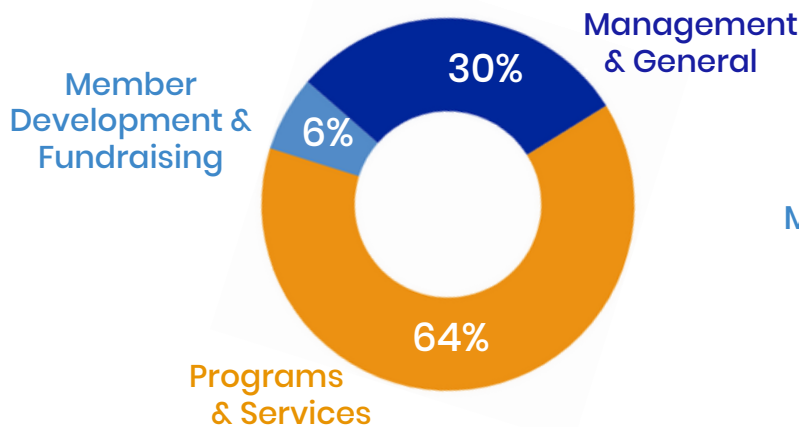
**Indicates new Member in 2024*

2023 AUDITED FINANCIAL STATEMENTS

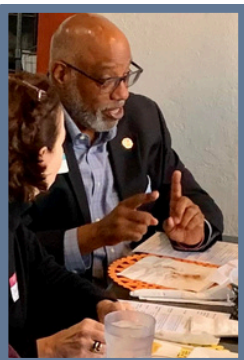
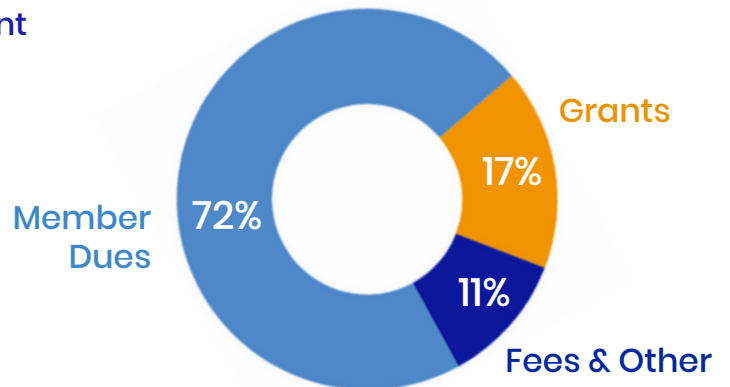
Philanthropy Missouri conducts an annual external audit of financial statements and makes the most recent report (along with organizational annual reports) available publicly [here](#). The most recently completed audit, for fiscal year 2023 (FY23), shows \$409,262 in revenues, expenses of \$479,152, and reserves of \$256,825. This report reflects an organization that continues its transition – investing in its statewide infrastructure and services while spending down its first significant multi-year grant.

FY23 also underscored the need to update the association’s business model to support the new statewide work in the long term. In FY23, the organization conducted pilots to explore fee-for-service income and a working group of Members began the process to review Member Dues. Dues rates have remained flat since 2012 with the last strategic adjustment to schedule dating back to the late 1990s. The adjusted schedule is anticipated to be finalized in FY25 and with implementation beginning in FY26.

FY23 Expenses



FY23 Revenues



2024 GRANTS AND IN-KIND SUPPORT

With a lean team, Philanthropy Missouri relies on our community partners for expertise, support, and collaborative effort. To that end, we would like to thank the following organizations for providing grants and in-kind support for 2024 programs and services:

A Village for Good
ABFE
ARCHS
Ameren Illinois
Aspen Institute Community Strategies Group
Asian American/Pacific Islanders in Philanthropy (AAPIP)
Association of Fundraising Professionals (STL)
Barton County Community Foundation
Bodman's Workplace Law Practice Group
Boniface Foundation
Cardinal Health
Cassville Community Foundation
Center on Budget & Policy Priorities
Chief Executives for Corporate Purpose
Chillicothe Area Chamber of Commerce
Christian County Senior Services Tax Fund
City of Eldon
Clark-Fox Family Foundation
Commerce Bank
Community Foundation of the Ozarks
Community Foundation of Northwest Missouri
Community Foundation for Southeast Michigan
Community Partnership of Southeast Missouri
Cornerstone Corporation
Council on Foundations
Council of Michigan Foundations
Crown Center for Senior Living
Dallas County Commission
Dallas County Community Foundation
Dallas County R-1 Schools
Deaconess Foundation
DeKalb County Youth Building
Delmar DivINe
Economic Opportunity Funders
EducationCounsel
Ekstrom Alley Clontz & Assoc.
Elder Justice Initiatives, Advancing States
Eldon Area Chamber of Commerce
Emerson
Empower Missouri
Equal Opportunity Funders
Farm Action
Farm, Food, Environment Policy Consulting
Federal Reserve Bank of St. Louis
Forward Through Ferguson
Fund for Shared Insight
Funders for Justice
Generate Health
Girls in the Know
Gladiator Consulting
Grantmakers for Effective Organizations (GEO)
Hannibal Regional Healthcare System
Harvey A. Friedman Center for Aging
Herschend Family Foundation
Incarnate Word Foundation
Indiana Philanthropy Alliance
J.R. Albert Foundation
Kansas Action for Children
KC Early Education Funders Collaborative
Kids Win Missouri
King City Main Street Initiative
King City David Waltemath Endowment Fund
LifeWise STL
Light a Single Candle Foundation
Lutheran Foundation of St. Louis
Maine Street Initiative
Marillac Mission Fund
Maysville Endowment Fund
Maximize NWMO
Midwest Climate Collaborative
Missouri Budget Project
Missouri Children's Trust Fund
Missouri Council on Aging
Missouri Foundation for Health
Missouri Rural Crisis Center





2024 GRANTS AND IN-KIND SUPPORT

(continued)

Missouri Rural Development Partners
 Missouri State University
 National Center for Family Philanthropy
 National Committee for Responsive Philanthropy
 National Organization for State Offices Rural Health
 Native Americans in Philanthropy
 Neighbor Company
 New Growth
 Patterson Family Foundation
 Philanthropic Initiative for Racial Equity (PRE)
 Philanthropy Ohio
 Philanthropy for Active Civil Engagement (PACE)
 PhilanthropywoRx
 PNC Bank
 Race Forward
 Realized Worth + RW Institute
 Rockefeller Foundation
 Rustic Roots Sanctuary
 Sangfroid Strategy
 Seeking Solutions
 Silver Dollar City Foundation
 Simmons Bank
 St. Louis City Senior Service Fund
 St. Louis Community Foundation
 St. Louis County Children's Service Fund
 St. Louis Mental Health Board

St. Louis Office for Developmental Disability Resources
 St. Louis Regional Health Commission
 STL Village
 Sustainable Agriculture & Food Systems Funders (SAFSF)
 Tax Equity Funders Network
 Technology Association of Grantmakers (TAG)
 The Rome Group
 The Saigh Foundation
 Transforming Power Fund
 Tri-County Alternative Energy Museum & Visitors Center
 Trio Foundation
 Trust-Based Philanthropy Project
 Unified Government of Wyandotte County
 United Philanthropy Forum
 United Way of Greater St. Louis
 University of San Diego
 Washington University in St. Louis
 Wells Fargo Foundation
 West Central Missouri Community Action Agency
 Winton Policy Group
 Worthington Enterprises
 YouthBridge Community Foundation





2024 PROGRAMS & SERVICES

To serve our growing statewide membership, we produced and/or collaborated on **54 educational and networking programs and community events** designed to equip, connect, and energize our Members and partners for thoughtful action and greater impact in Missouri. Below are key programming highlights of 2024.



STATEWIDE CONVENINGS

2nd Show-Me Philanthropy Statewide Conference & 53rd Annual Meeting

Sponsored by Emerson

Rural Philanthropy Summit

Made possible through partnership with Community Foundation of the Ozarks and sponsorship by Patterson Family Foundation

NETWORKS

Corporate Funder Network

- Getting Focused on Community Impact: Using the Opportunity Filter Tool
[Midwest Partnership Series Session](#)
- Exploring Transformative Volunteerism: Engaging Employees & Increasing Their Impact
[Midwest Partnership Series Session](#)
- Giving in Numbers Report – Chief Executives for Corporate Purpose (CECP)

Early Childhood Network

- Early Childhood Policy Briefing
[Co-hosted by PhilMO and KC Early Education Funders. Sponsored by Emerson and PNC Bank.](#)
- *Promotion of State Board of Education / MO Dept. of Elementary and Secondary Education community forums and research briefings*

Family Foundation & Donor-Advised Fund Network

- Participatory Philanthropy
- Engaging Next Generation Adults
- Applying an Equity Lens to Your Work
- 12 "Fundamentals of Family Philanthropy" Webinars through PhilMO's partnership with National Center for Family Philanthropy (NCFP)

Funders of Color Network

- Black in Philanthropy: St. Louis Coffee Break
- Networking Happy Hour

Public Policy & Advocacy Funder Network

- Building Policy Advocacy & Grassroots Capacity to Improve Economic Security
(In Person - Jan; Virtual Touch Bases - Oct)
[In partnership with Economic Opportunity Funders and Tax Equity Funders Network](#)
[Sponsored by Rockefeller Foundation](#)

Public Policy & Advocacy (continued)

- Digging In (Part I): MO Funder Farm Bill Briefing
[In partnership with Sustainable Agriculture & Food Systems Funders \(SAFSF\)](#)
- 2024 Missouri Election Debrief: What it Means for Missouri Funders
[In partnership with Missouri Foundation for Health and the Winton Policy Group](#)
- 2024 Federal Election Debrief
[In partnership with Council on Foundations](#)
- 2024 Federal & State Budget Briefing for MO Funders
[In partnership with Missouri Budget Project and Economic Opportunity Funders](#)

Role-Based Networks

Executives, Operations Staff, and Program Staff were convened through Member Calls or In-Person Roundtables

Rural Funder Network

- Urban Funder Briefing: Why Rural Investment Matters for a Thriving & Equitable Missouri
- Meeting and Rural MO Site Visits in Buffalo, Eldon, King City, and Maysville
[Sponsored by United Philanthropy Forum](#)

St. Louis Funder Network

- UnCharitable Film Screening & Discussion
- Spring People in Philanthropy Luncheon
[Sponsored by Commerce Bank and YouthBridge Community Foundation](#)
- Fall People in Philanthropy Luncheon
[Sponsored by ARCHS](#)
- Philanthropy After Hours
[Sponsored by The Saigh Foundation](#)

SWMO Funder Network

- What's in Store for '24!
- Listening to Community
- UnCharitable Film Screening & Discussion
- People in Philanthropy Luncheon
[Sponsored by Community Foundation of the Ozarks](#)
- Philanthropy After Hours
[Supported by Missouri Foundation for Health](#)

EVENTS TO CONNECT FUNDERS & FUNDED PARTNERS

St. Louis Funder First Fridays Pilot

Multi-funder effort to provide free technical assistance to community / nonprofit partners

Summer Party to Enhance Equity in Philanthropy (PEEP)

Sponsored by Gladiator Consulting, A Village for Good, Association of Fundraising Professionals – STL Chapter, and The Rome Group
Hosted at Big Brothers Big Sisters' Anew Rooftop

SKILL-BUILDING PROGRAMS

Community Foundation Finance Course

Midwest Partnership Series In-person Program

Demystifying Trust-Based Philanthropy Series

Facilitated by Trust-Based Philanthropy Project

Participatory Grantmaking: (Re)Connecting with the Model in our Current Landscape

Midwest Partnership Series Session

Trust-Based Philanthropy with a Racial Equity Lens: Missouri Cohort

Facilitated by PhilMO with content by Trust-Based Philanthropy Project

Responsible Adoption of AI in Philanthropy

Midwest Partnership Series Session

LUNCH WITH LEADERS

Designed to cultivate connections between long-tenured philanthropic sector leaders and those new to the sector. Special thanks to our featured leaders:

- Gwen Wurst, J.R. Albert Foundation
- Kiesha Hammock, United Way of Greater St. Louis
- Dwayne Proctor, Missouri Foundation for Health
- Emily van Schenk Hof, Missouri Children's Trust Fund
- Barbara Carswell, YouthBridge Community Foundation

2024 KEY PROGRAMS & SERVICES

(continued)



Ferguson: A Decade Later

PhilMO regularly represents the Missouri sector at national tables. As community marked a decade since the Ferguson Uprising began in Metro St. Louis in August 2014, PhilMO shared community-led reflection and learning opportunities with Members. Additionally, the team extended support and hospitality to national (and international) sector colleagues who sought to convene in, with, and/or about Missouri.

Key national partners included:

ABFE, Asian Americans/Pacific Islanders in Philanthropy, Borealis Philanthropy, Funders for Justice, Grantmakers for Effective Organizations, National Committee for Responsive Philanthropy, Native Americans in Philanthropy, Philanthropic Initiative for Racial Equity, Race Forward/Facing Race, and United Philanthropy Forum

TOPICAL

Digging In (Part II): Film Screening & Discussion

Special thanks to Sustainable Agriculture & Food Systems Funders (SAFSF) and Missouri Foundation for Health for supporting access to the film, DIGGING IN.

Equity in Aging

Sponsored by Marillac Mission Fund

Impact Investing Fundamentals

Midwest Partnership Series Session

Debunking Myths and Removing Barriers to Equitable Change

Midwest Partnership Series Session

Your Roadmap to Today's Hot Topics in HR

Midwest Partnership Series Session

Briefing on the 2024 Midwest Foundation Salary & Benefits Report

In partnership with funder associations in Illinois, Indiana, Iowa, Michigan, Minnesota, Ohio, and Wisconsin

INFORMATION & SERVICES

In 2024, PhilMO maintained and grew popular Members services, including:

- Investing **38.5 hours** to field **23 customized Member Research Requests**
- Curating and publishing **18 What Gives? Newsletters**
- Designing and launching a **new website and information database** including new, dynamic **Members-only features** to improve connectivity and communication
- Responding to community requests for speakers **representing the sector** (SEE ALSO ABOVE)
- Joining seven states to analyze and publish a Members-only regional report on **sector compensation trends in the Midwest**



For more information, visit www.philanthropymissouri.org
or email info@philmo.org.



For more information, visit www.philanthropymissouri.org
or email info@philmo.org.



**PHILANTHROPY
MISSOURI**

philanthropymissouri.org