

CHRISTIAN COUNTY CHAMBER OF COMMERCE

# LEGISLATIVE UPDATE



## 2024 LEGISLATIVE AGENDA PRIORITIES

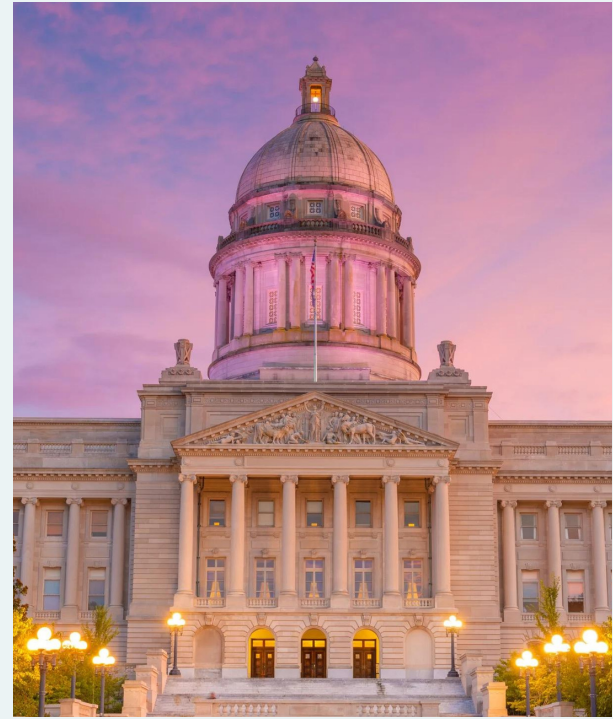
[www.christiancountychamber.com](http://www.christiancountychamber.com)



---

## 2024 Legislative Agenda Priorities

This Legislative Agenda is developed by the Christian County Chamber's Governmental Affairs Committee using member input from the legislative survey and priorities within the community vision plan. The agenda is used to communicate the Chamber's positions on issues at the local, state and federal levels of government in order to promote public policy decisions that reflect the priorities of the chamber's members



---

**THE CHRISTIAN COUNTY CHAMBER SUPPORTS POLICIES AND EFFORTS IN THE FOLLOWING AREA:**

### Education Workforce & Childcare



- Enhance the quality of the educational environment to better prepare students, attract quality educators with competitive compensation and to meet workforce needs.
- Increase investing in early childhood education and pursuing policies to increase access to quality child care allowing more Kentucky parents and guardians to participate in the workforce.
- Incentivize and reduce barriers to employment for people coming out of addiction, treatment or incarceration to help get them back to being productive citizens.



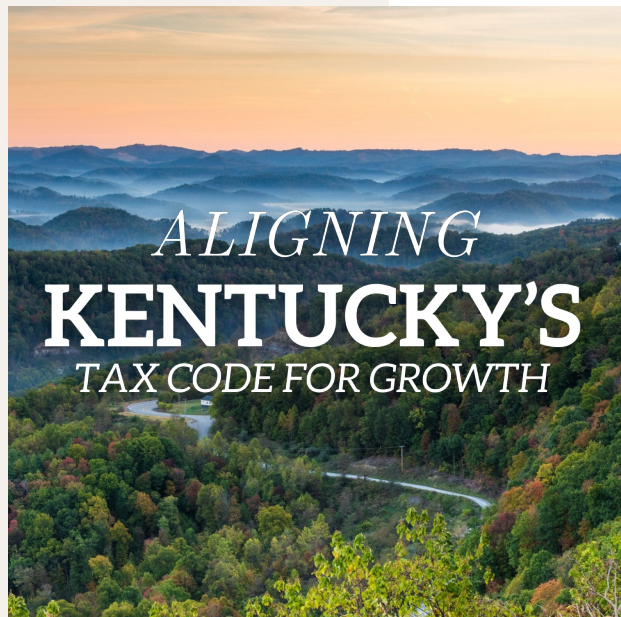
## Viable Downtown Hopkinsville

- Enhance downtown Hopkinsville's viability including being appealing to pedestrian traffic, aesthetically attractive and conducive to conduct business.



## Housing

- Increase the county's housing stock with greater opportunities for affordable home ownership.
- Create greater efficiencies to reclaim and refurbish abandoned / vacant property



## Tax Reform

- Continue phasing out the state individual income tax
- Provide more flexibility tax structures for local governments
- Modernize funding for state transportation infrastructure

## Fort Campbell & Attracting Military to the State

---



- Exempt Tax on 100% of Military Retirement Pay
- Exempt Transfer Tax on Motor Vehicle for Military
- Adopt DOD-priority occupational licensing compacts including the Social Work Compact, Massage Therapy Compact, Emergency Medical Services Compact and Dental and Dental Hygienist Compact.
- Ensure the retention and expansion of Fort Campbell's military missions, capabilities and infrastructure
- Pursue opportunities for defense-related economic development

---

## Economic Development



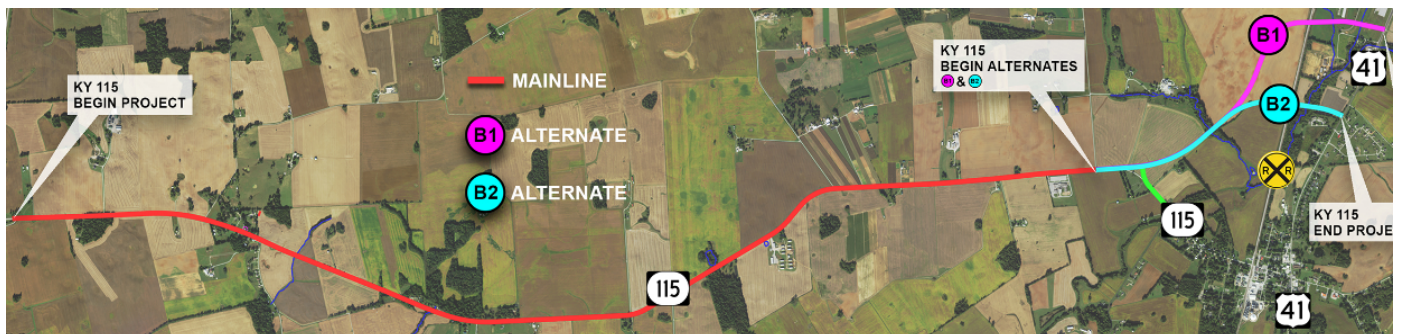
- Create a School of Veterinary Medicine at Murray State University utilizing MSU's Breathitt Veterinary Diagnostic Lab facility in Hopkinsville.
- Reform legal liability retort reducing the legal liability climate and foster more out of state investment.

## Roads & Infrastructure Priorities



- I-24 - Expand and widen I-24 from the TN to IL state line to improve safety and meet the increasing traffic patterns associated with the population growth in the region.
- 
- COMMERCE PARK II WATER & SEWER DESIGN WORK - Secure funding for the design of expanding water and waste water infrastructure servicing Commerce Park II

## KY 115 Corridor



- KY 115 CORRIDOR - Enhance the safety and accommodate the increased traffic flow patterns along the Kentucky 115 corridor from US 41 to the Kentucky-Tennessee state line including a CSX overpass - connector from US 41 to Hwy 115 and upgrades to the I-24 exit 89.



- BREATHITT PARKWAY (I-169) & KY 1682 INTERCHANGE (exit 12) - Reconstruct interchange to meet interstate standards using Design Build to allow the installation of I-169 signs.
- KY 1613 (LOVERS LANE) & HWY 107 - Enhance the safety and accommodate the increased traffic flow along KY 1613 and at the intersection of HWY 107 with the new consolidated high school.



# CHRISTIAN COUNTY Chamber of Commerce

**Taylor Hayes - President/CEO**

thayes@christiancountychamber.com | 270-885-9096

GOVERNMENTAL AFFAIRS COMMITTEE

## CHRISTIAN COUNTY'S 2024 PRIORITY ROAD & INFRASTRUCTURE PROJECTS

### KY 115 CORRIDOR

Request for funding for the Kentucky 115 projects that widens, improves and enhances safety measures in an economic boom area of South Christian county. The Increased traffic volume on and around the corridor in which the routes was not built, is creating numerous unsafe issues for the industrial, residential, agricultural and school traffic. The corridor connects Pembroke, KY, Commerce Park II (a 1000+ acre rail site where 5000 jobs are expected to be created over the next several years), I-24 exit 89 and Oak Grove, KY. The enhanced safety measures of this route are significant for the economic development and population growth that is occurring. **Projects along this corridor include:**

**Project #2-381.2:** CSX overpass and connector North to US 41

**Project # IP202100077:** Widening KY 115, I-24 exit 89 to the TN state line (\$18.29M)

**Project #2-8953:** KY 115 North Section ( \$10.23 M)

**Project #2-10:** I-24 exit 89 upgrades (\$31M)

**Project #2-8954:** KY 115 South Section (\$16.86)

### RECONSTRUCT CLOVER LEAF INTERCHANGE EXIT 12

Reconstructing the clover leaf at exit 12 / KY 1682 north of Hopkinsville on Breathitt Parkway (I-169) using Design Build brings the interchange up to Federal Interstate guidelines to become an interstate corridor.

**Project #2-898.00:** Reconstruct Breathitt Parkway (I-1679) interchange( (exit 12) at KY 1682 to meet interstate standards using Design Build (\$18.750M)

### EXPANSION/WIDENING OF I-24

Expansion and widening of I-24 from the TN to IL state line to meet the increasing traffic patterns associated with the population growth in the region.

## NEW CONSOLIDATED HIGH SCHOOL

With the construction of the new high school with a 2300+ student enrollment and over 200 teachers and staff, road safety is critical for the greatly increased traffic in the area. Two safety upgrades are critical involving KY 1613 and Hwy 107.

**Project #2-80250-1:** Improve safety and mobility by widening of KY 1613 from Breathitt Parkway (I-169) to Hwy 107 (\$3M)

**Project #2-80250.00:** KY Improve safety and mobility including a turning lane at the KY 1613 & Hwy 107 interchange (\$5.8M)

## COMMERCE PARK II WORK INFRASTRUCTURE

Hopkinsville Water and Environmental Authority is requesting \$3M in grant funding for the design of water/sewer infrastructure for the continued growth of Commerce Park II. The project includes the design and construction of the necessary water and sewer infrastructure upgrades in order to serve a 1,000 + acre industrial site with rail located in Hopkinsville, KY.

**Water - SRF Phase VI:** 7.5 miles of 36" Transmission Water Main Extension - (\$20M, 5.5 miles of 20" Water Main Extension - (\$14M) and a 2 MG Elevated Storage Tank (\$6M) = Total \$40 M

**Sewer:** 2 MGD Pump Station & 13.5 miles 18" Force Main = \$27M

**Total Water & Sewer Improvements:** 2 MGD Pump Station & 13.5 miles 18" Force Main = \$27M

*\*Both the water and sewer utility infrastructure projects will take 48 months to build, requiring at least 18 months for design and 30 months for construction. HWEA is requesting a \$3M Cleaner Water grant in order to immediately begin the design for the water and sewer infrastructure projects as listed above.*



# CHRISTIAN COUNTY Chamber of Commerce



## LOCAL ELECTED OFFICIALS

**Christian County Government**  
<https://christiancountky.gov/>

**City of Hopkinsville**  
<https://www.hopkinsvilleky.us>

**City of Oak Grove**  
<https://oakgroveky.org/>

## STATE LEGISLATORS

**Senator Whitney Westerfield**  
Capitol Annex, Room 228 Frankfort, KY 40601  
502-564-8100 ext. 622  
[whitney.westerfield@lrc.ky.gov](mailto:whitney.westerfield@lrc.ky.gov)

**Rep. Myron Dossett**  
Capitol Annex, Room 401 Frankfort, KY 40601  
502-564-8100 ext. 657  
[myron.dossett@lrc.ky.gov](mailto:myron.dossett@lrc.ky.gov)

**Rep. Jason Petrie**  
Capitol Annex, Room 392 Frankfort, KY 40601  
502-564-8100 ext. 618  
[Jason.petrie@lrc.ky.gov](mailto:Jason.petrie@lrc.ky.gov)

**Rep. Walker Thomas**  
Capitol Annex, Room 329C Frankfort, KY 40601  
502-564-8100 ext. 658  
[walker.thomas@lrc.ky.gov](mailto:walker.thomas@lrc.ky.gov)

## Federal LEGISLATORS

**US Senator Mitch McConnell**  
317 Russell Senate Office Bldg. Washington, DC 20510  
202-224-2541  
[www.mcconnell.senate.gov](http://www.mcconnell.senate.gov)

**Senator McConnell's Field Representative  
Morgan Alley**  
100 Fountain Ave., Suite 300 Paducah, KY 42001  
202-224-2541  
[morgan\\_alvey@mcconnell.senate.gov](mailto:morgan_alvey@mcconnell.senate.gov)

**US Senator Rand Paul**  
167 Russell Senate Office Bldg. Washington, DC 20510  
202-224-4343  
[www.paul.senate.gov](http://www.paul.senate.gov)

**Snator Paul's Field Representative  
Christina Peterson**  
1100 S. Main St. Suite 112 Hopkinsville, KY 42240  
270-885-1212  
[www.paul.senate.gov](http://www.paul.senate.gov)

**US Representative James Comer**  
2410 Rayburn House Office Bldg. Washington, DC 20515  
202-225-3115  
[www.comer.house.gov](http://www.comer.house.gov)

**Congressman Comer's Field Representative  
Sandy Simpson**  
200 North Main Street, Suite F Tompkinsville, KY 24167  
270-487-9509  
[sandy.simpson@mail.house.gov](mailto:sandy.simpson@mail.house.gov)