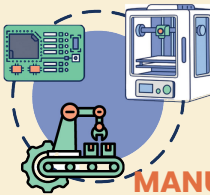




BIOSCIENCES



MANUFACTURING



HEALTHCARE

# EDUCATION & WORKFORCE DEVELOPMENT MODERNIZING INVESTMENT



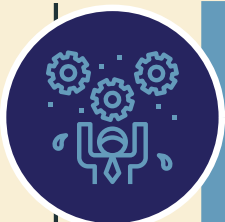
## A SYSTEM AT A CROSSROADS

A degree-first system built for the past no longer works. As students juggle work, school, and life in a fast-changing, skills-based economy, friction leads to stop-outs and talent shortages. Aligning education and workforce pathways keeps students moving—and fills jobs faster.



## FINANCIAL STRAIN

Facing a \$16.9B FY27 shortfall (\$5.4B carried over, \$11.5B projected), the Federal Pell Grant is under strain and aid is at risk for millions. If funding remains flat at \$22.475B, the maximum award drops from \$7,395 to ~\$5,710—a **23% cut**, with deeper reductions possible.



## THE IMPACT

These cuts fall hardest on students already carrying the most—work, bills, and family. Nearly 70% work while enrolled, many are financially independent, 40% attend part-time, and 1 in 5 are parents. When aid drops, progress slows or stops altogether—and cutting Summer Pell only deepens the setback.



## THE ECONOMY & INDUSTRY IS AT STAKE

Left unaddressed, the effects ripple beyond students—access shrinks, completion slows, and workforce pipelines weaken. Equity gaps widen as those with the least flexibility take the biggest hit. The system becomes too rigid for learners and too slow for the economy.



## A COHERENT WAY FORWARD

This is a system design challenge—not an either/or choice. Aligning **Traditional Pell**, **Workforce Pell**, and **Perkins V** creates a seamless path from degrees to training to jobs. Together, they deliver a faster, more responsive workforce pipeline.



Protect and fully fund Traditional Pell.

Expand Workforce Pell with strong accountability.

Sustain and strengthen Perkins V investments.

Support stackable pathways from training to degrees and careers.