

NARI MINNESOTA - 2023 CoTY AWARDS

PROJECT: MORNING RETREAT **CATEGORY:** RESIDENTIAL BATH \$70,000-100,000

The big, bulky bathroom was characterized by all of the typical 80's features including honey oak cabinetry, cream porcelain tile, a space-hogging jacuzzi tub and very cramped shower with a seashell motif. Our homeowners were ready to create an owner's suite bathroom retreat to fit not only their taste, but their every whim as well.

New alder cabinetry with quartz countertops ground the new design. His and her sinks featuring matte black hardware and Delta faucets, elegant gold sconce lighting and round vanity mirrors rimmed in gold bring the perfect amount of drama.

Storage cabinets between the sink and interior wall extend to the ceiling, providing additional storage but also bringing the eye upward to create the illusion of height.

Along the back wall, the newly enlarged shower is encased by a half wall and glass shower surround. Nearby, a new soaking tub stands ready for hot soaks after a long day with floating shelves above ready to hold towels, candles and other extras.

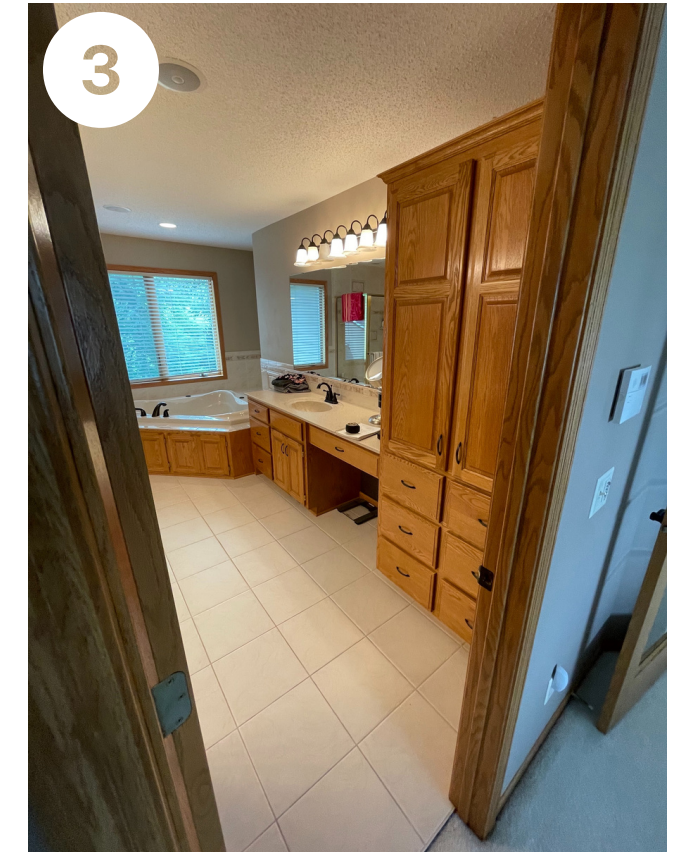
New porcelain floor tile with a stone-like appearance and a refinished water closet complete all but one last final touch. A feature designed exclusively for them and surely the first we've ever included, look closely and you'll find nestled in one of the storage cabinets a paneled wine fridge and coffee station. Truly a space designed to meet every whim, from sunrise to sunset!



BEFORE PHOTOS

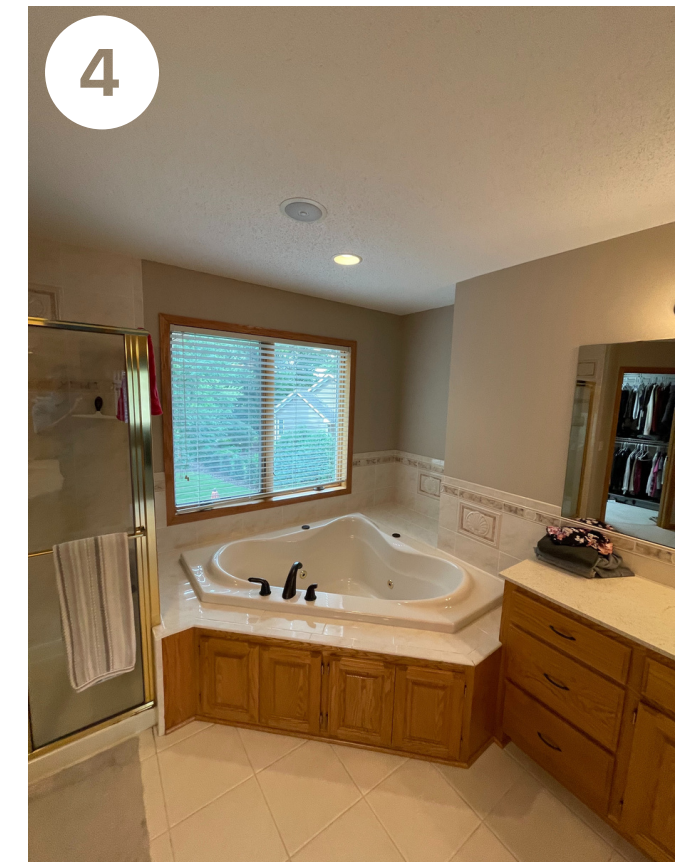
Clockwise, starting in upper left corner.

- 1) View from hallway into bathroom
- 2) Vanity and storage cabinet on left as you enter
- 3) Second vanity and storage cabinet on right as you enter
- 4) Large space hogging jacuzzi style tub
- 5) View from far wall, including the water closet
- 6) Existing shower and entrance to walk-in closet



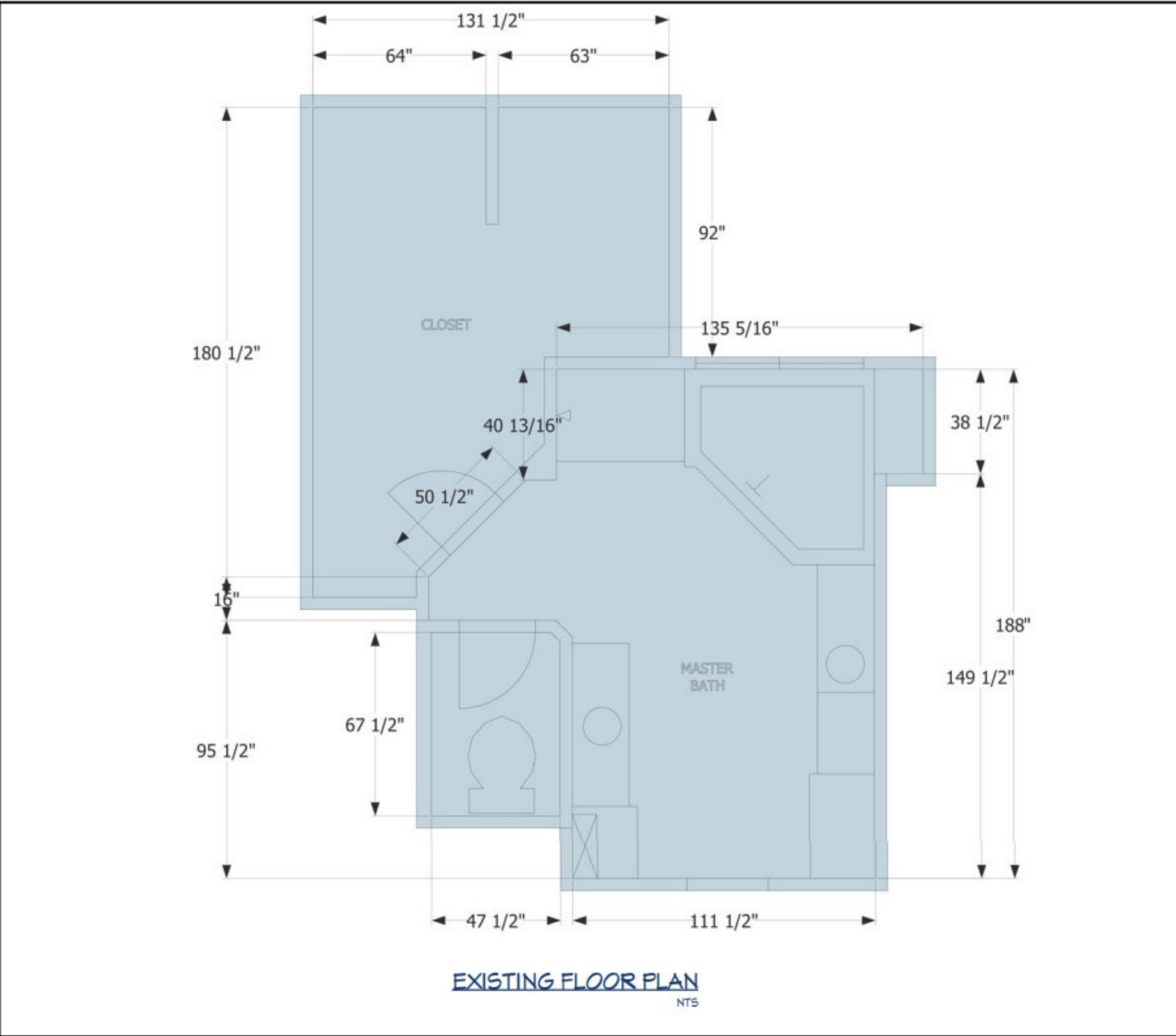
CLIENT REQUESTS

- Owner's suite bathroom retreat to fit not only their taste, but their every whim
- Freestanding tub and enlarged shower
- Wine fridge and coffee station
- Retain storage
- A refined aesthetic with spa-like vibes. An luxury escape to be enjoyed at home.



BEFORE SITE PLAN

The big, bulky bathroom was characterized by all of the typical 80's features including honey oak cabinetry, cream porcelain tile, a space-hogging jacuzzi tub and very cramped shower with a seashell motif.



AFTER SITE PLAN & LAYOUT CHALLENGES

Enlarging the Shower

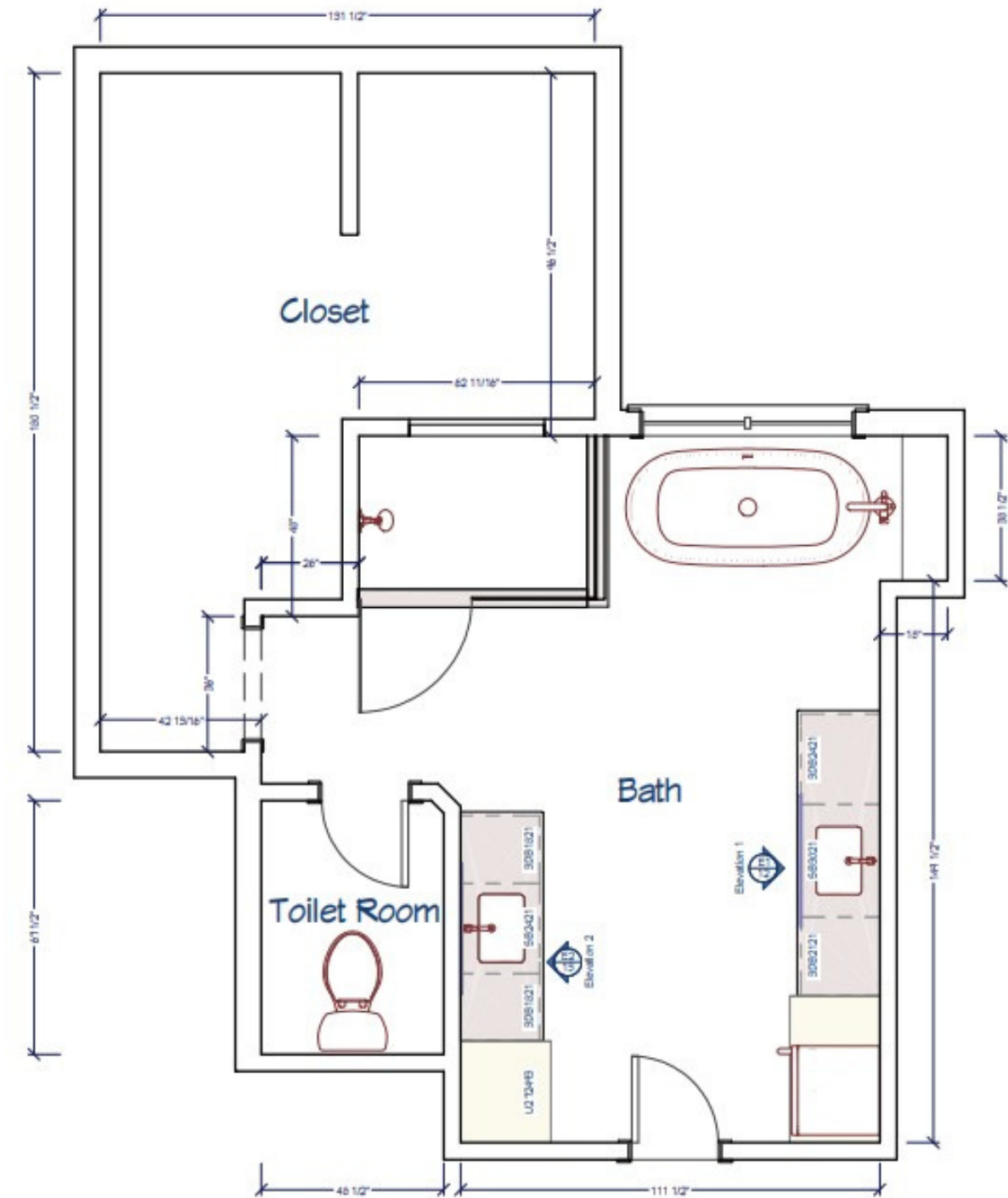
The biggest challenge in redesigning this space was finding a way to enlarge the shower while leaving room for a requested freestanding tub. To do so, we decided to carve a bit of space out of the adjoining large walk-in closet. The closet was oversized, making the sacrifice a bit less painful and the decision opened the possibility for the shower footprint to expand significantly.

Accommodating the Tub

The fit remained tight but with careful planning, the work to move the existing plumbing and accommodate the freestanding tub faucet was completed.

Incorporating the Mechanicals

The remaining challenge was the area to the right of the tub, a wall with mechanicals had us thinking creatively to create a purposeful use of the wall that worked around the mechanicals jutting out below.



BEFORE AND AFTER



FUNCTIONALITY

The newly enlarged shower is encased by a half wall and glass shower surround.

His and her sinks remain but in an elevated form.

Within the shower area, a shampoo niche provides storage space for necessary toiletries.

Storage cabinets between the sink and wall extend to the ceiling, providing additional storage while also housing the requested paneled wine fridge (image in lower left) with a hidden coffee station nestled in the cabinetry above.

New free-standing tub and floor-mounted tub filler replace the bulky jacuzzi.

Wall with mechanicals to the right of the tub wall is conveniently topped with floating shelves ready to hold towels, candles and other extras.



AESTHETICS

New alder cabinetry, a porcelain floor tile with a stone-like appearance and quartz countertops ground the new design, adding warmth, texture and light.

His and her sinks remain but in an elevated form, featuring matte black hardware and Delta faucets, elegant gold sconce lighting and round vanity mirrors rimmed in gold.

Meanwhile, storage cabinets between the sink and wall extend to the ceiling, providing additional storage but also bringing the eye upward to create the illusion of height.

Neutral grey ceramic large format wall tile graces the shower walls, balanced by a dark grey penny round shower floor below. The shower niche, featuring herringbone accent tile and a quartz shampoo shelf, is one more detail that contributes to the sophistication found throughout.

Nearby, a new soaking tub stands ready for hot soaks after a long day with floating shelves above continuing to build upon the warm notes that define the design.

