



Laundry Co.
WASH - DRY - STEAM

BASEMENT
Under \$100,000



Client Needs | BEFORE

Our clients' typical South Minneapolis basement laundry room was long overdue for a remodel. The owners desired a more functional layout for prepping and sorting laundry, additional counter space and custom storage for household supplies. The washer and dryer were tucked away in a corner and difficult to access. Miscellaneous household, pet and craft supplies were stored wherever they would fit.

Our clients desired a more organized and efficient multi-purpose space to help keep their household running smoothly. As they planned their lower level renovation, the item at the top of the list was adding a dedicated dog wash to bathe their two Great Danes. Washing large dogs in a bathtub can be messy, stressful and even dangerous, unless your dogs like taking a bath – which theirs didn't!



The dog wash needed to be large enough to fit a Great Dane, and it needed to be simple to use and easy to access to help keep water mess to a minimum.

Other pet-friendly amenities on the list were custom storage for pet food and supplies, built-in feeding dishes, and a designated spot for the litterbox, preferably out of view. The goal was to create a more organized space with a highly functional and efficient layout.

Before & After | LAUNDRY ROOM



BEFORE



AFTER

Before & After | LAUNDRY ROOM



BEFORE



AFTER

Before, During & After | DOG WASH



BEFORE



DURING



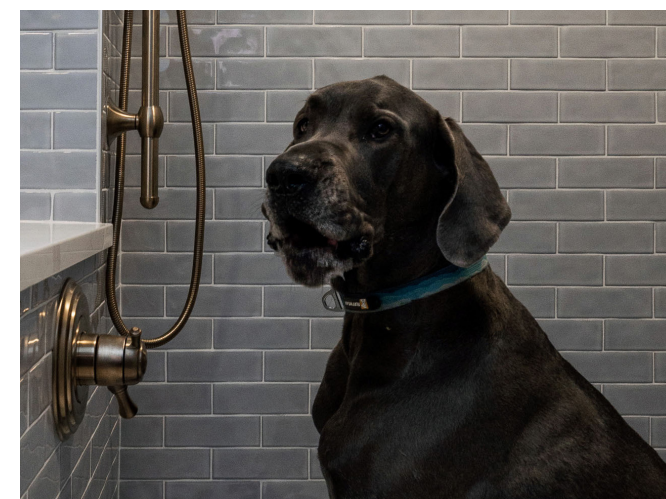
AFTER

Functionality | DOG WASH

Removing the old refrigerator and relocating the laundry tub allowed space to add a new custom dog wash for our clients' two large dogs. Because of the dogs' size, a sizable 4- by 2.5-foot walk-in was needed.

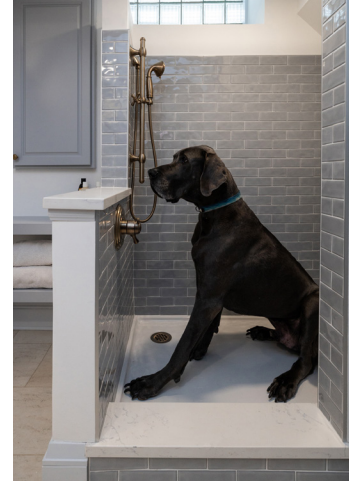
Dogs will shake after a bath and splash water, so a waterproof tile surround was key to protecting the surrounding space. To minimize tracking dirt inside, the dog wash is located within easy access to and from the backyard.

Inside, a removable shower head makes washing breezier, and a towel ring doubles as a device to hook up a leash and keep an uncooperative dog from escaping. The dog wash is convenient and accessible, making bathing as easy as possible – though the dogs might sometimes disagree!





Functionality | PET CARE & SUPPLIES



Pet Care & Supplies

(Clockwise from top left)

- Pull-out bins for pet food, equipment, supplies, garbage and recycling bins.
- Open shelving next to the dog wash for towels, shampoo and bath supplies.
- A waterproof tile surround in the shower helps keep water mess to a minimum.
- The cat's very own pull-out food and water drawer!
- A small pet door that is large enough for the cat to fit through – but not the dogs! The cat can finally eat her dinner in peace.
- An open space under the craft table keeps the cat's litterbox out of sight.



Aesthetics

The unfinished basement was transformed into a luxurious laundry room/multi-purpose space. Marble-look quartz countertops and champagne-bronze fixtures bring an elegant feel to the room.

New lighting brightens the room. Flooring is durable luxury vinyl in a natural limestone design. The basement feels large and spacious.

Our client loves the new space and even held a housewarming party in the laundry room! “It’s my favorite new room in the house,” she said. “I love to talk about it and show it off! It’s so functional and pretty.”



Before & After | CRAFT/FOLDING TABLE



BEFORE



AFTER



Innovation

- The newly remodeled laundry room is a multi-function space that features an innovative craft table/gift-wrapping station/folding table.
- The craft table's interior drawers are custom-sized to fit wrapping paper rolls, tissue paper, bows and supplies.
- Its large, flat surface is ideal for doing crafts and creative projects. Cabinets and shelves above house art supplies and miscellaneous household items.
- The craft table's large surface can be used for sorting and folding laundry.
- It houses a pull-out drawer for the cat's food and water dishes and features an open space below to keep the litterbox out of sight.

Craftsmanship

Custom details can be found in every drawer and cabinet. A pull-out clothes drying rack is a convenient feature when washing delicate items. It is located between the sink and washer/dryer.



Functionality | CUSTOM ORGANIZATION



Custom Organization

(Clockwise from top left)

- Rod in the shower for hanging and sorting laundry.
- Pull-out rack under the sink for convenient access to cleaning supplies, bottles, etc.
- Large storage cabinet for seasonal items, clothing, coats, boots, sporting goods, etc.

Our client is pleasantly surprised by how much she uses the dog wash for other things than just washing the dogs!

“I use it to clean out garbage cans and hang clothes that are sopping wet. I hose off my shoes after gardening, so I don’t track mud everywhere,” she said. “It’s for the dogs, but it’s also a huge wash sink.”

Before & After | LAUNDRY ROOM



BEFORE



AFTER

Before & After | LAUNDRY ROOM

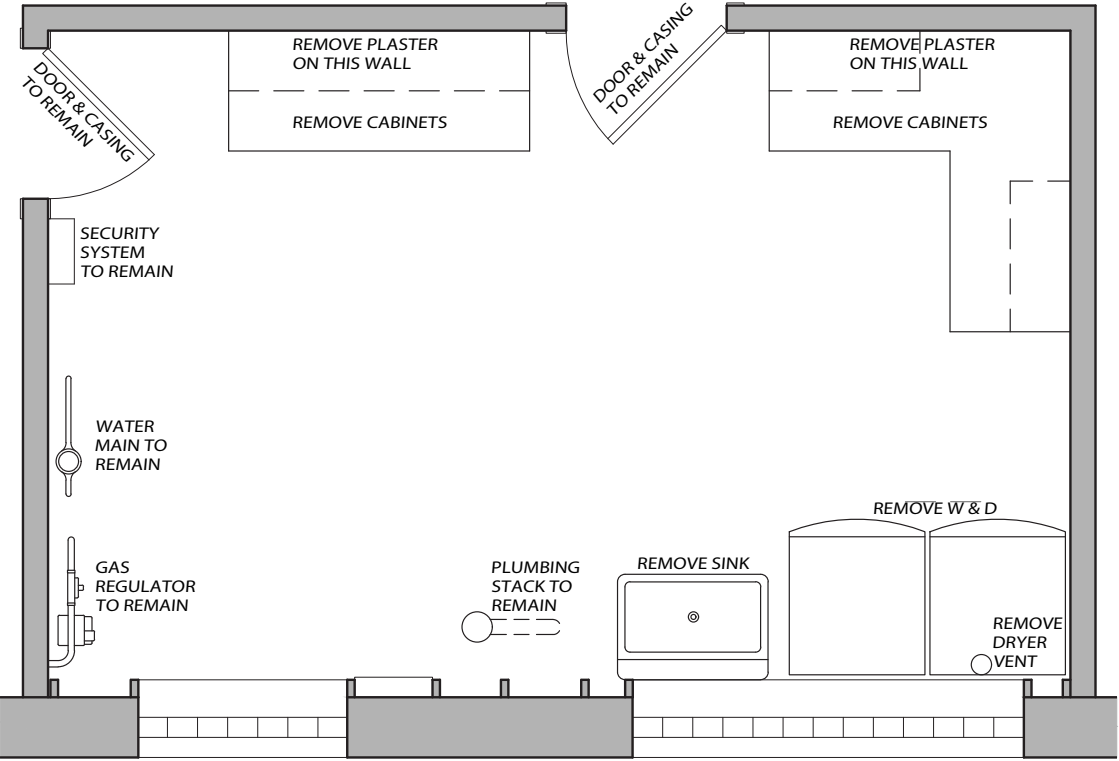


BEFORE

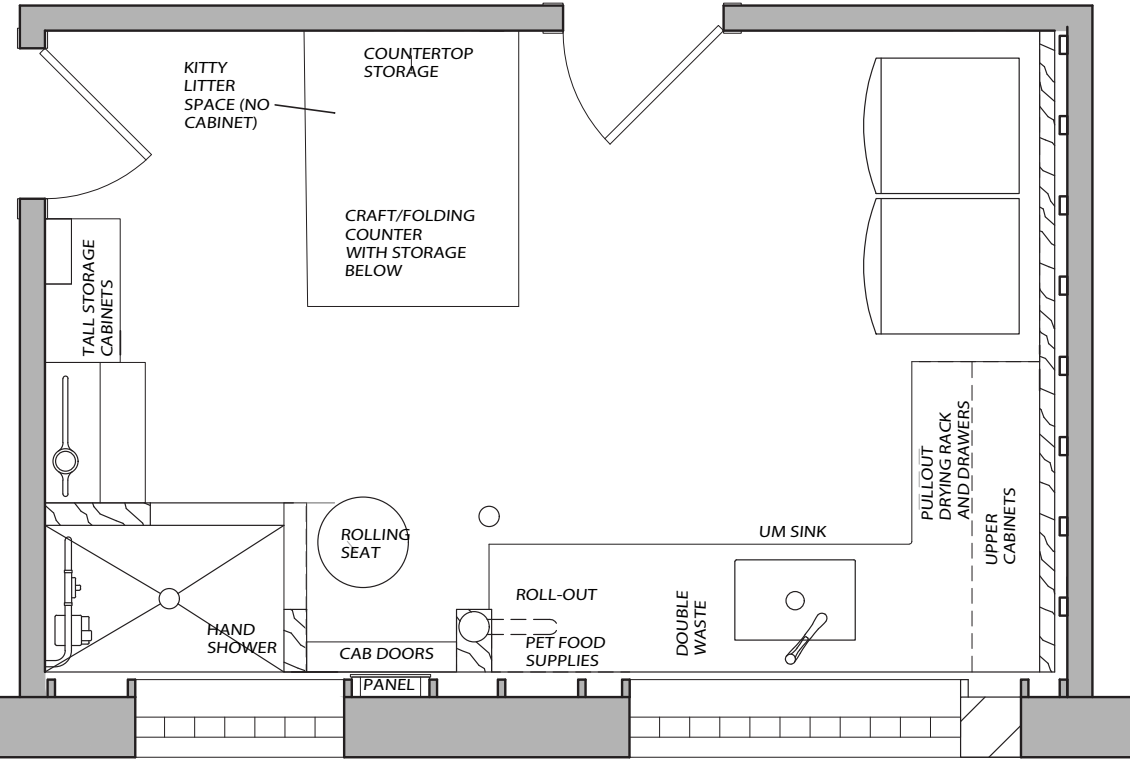


AFTER

Floor Plans | BEFORE & AFTER

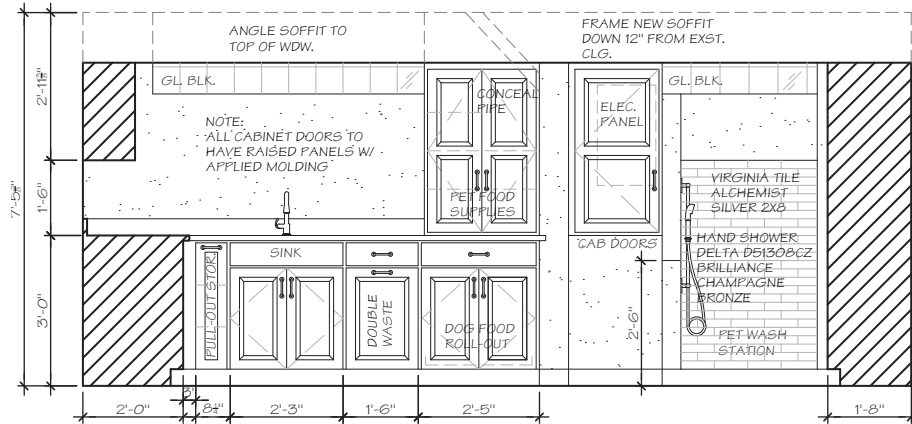


BEFORE

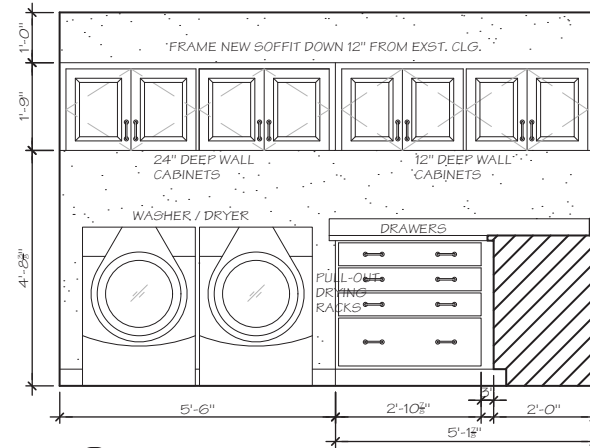


AFTER

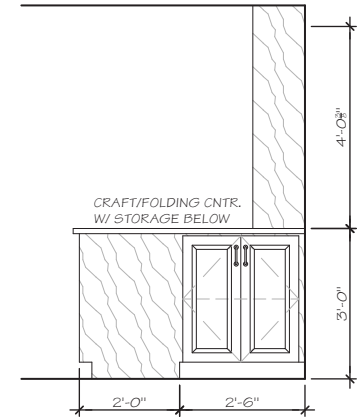
Elevations



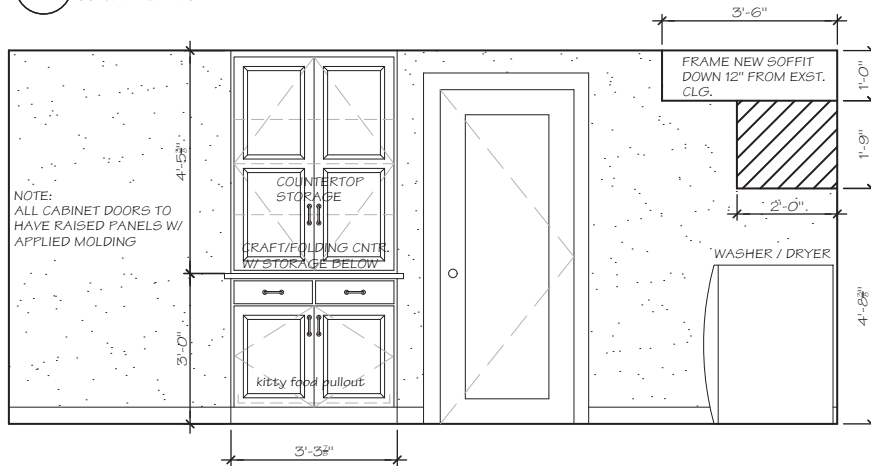
1 ELEVATION
SCALE: 1/2"=1'-0"



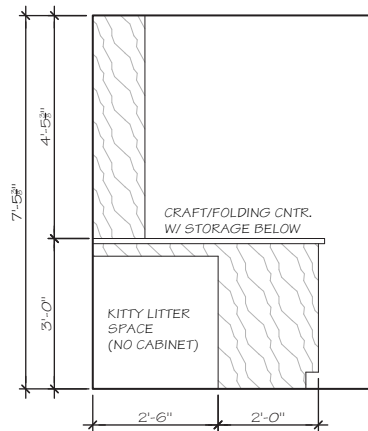
2 ELEVATION
SCALE: 1/2"=1'-0"



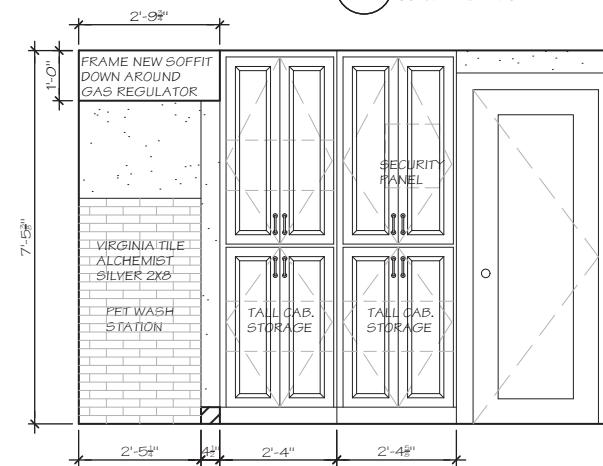
3 ELEVATION
SCALE: 1/2"=1'-0"



4 ELEVATION
SCALE: 1/2"=1'-0"



5 ELEVATION
SCALE: 1/2"=1'-0"



6 ELEVATION
SCALE: 1/2"=1'-0"

