

Opulent Revival

Transforming an awkward kitchen, cramped mudroom, and barely used butler's pantry into the perfect entertainment space for a family of four.

Residential Interior \$250,000 to \$500,000

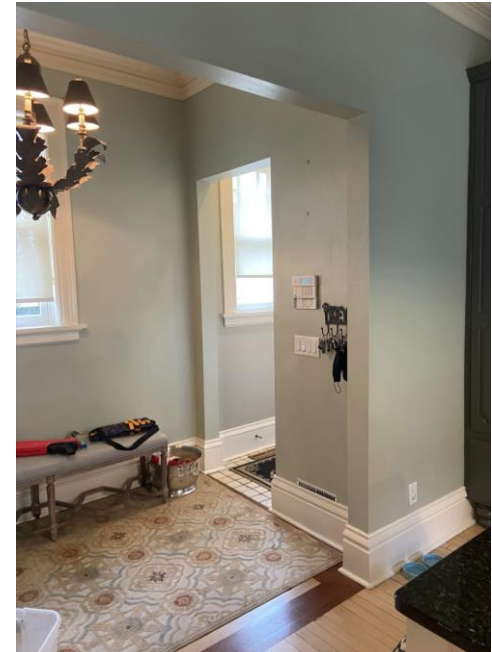
How it began:

Nestled within a quiet, charming neighborhood, lies an elegant 1889 residence that captured the eye of our clients from the beginning. With a breathtaking location that looks over hillside bluffs, this home was the perfect spot for our clients to entertain. But the home was lacking in one major area- the kitchen. Determined to revive it to its original charm, our clients entrusted us to transform their space. They purchased the home with hopes of transforming the awkward, cramped kitchen and barely used butler's pantry. They loved the architectural style of the home, but there was no flow between the spaces.

The remodel at a glance:

While our team gave a lot of the home fresh paint, new Moulding, and updated light fixtures, the main areas of focus included:

- Kitchen
- Butler's Pantry
- Mudroom



Before Interiors:

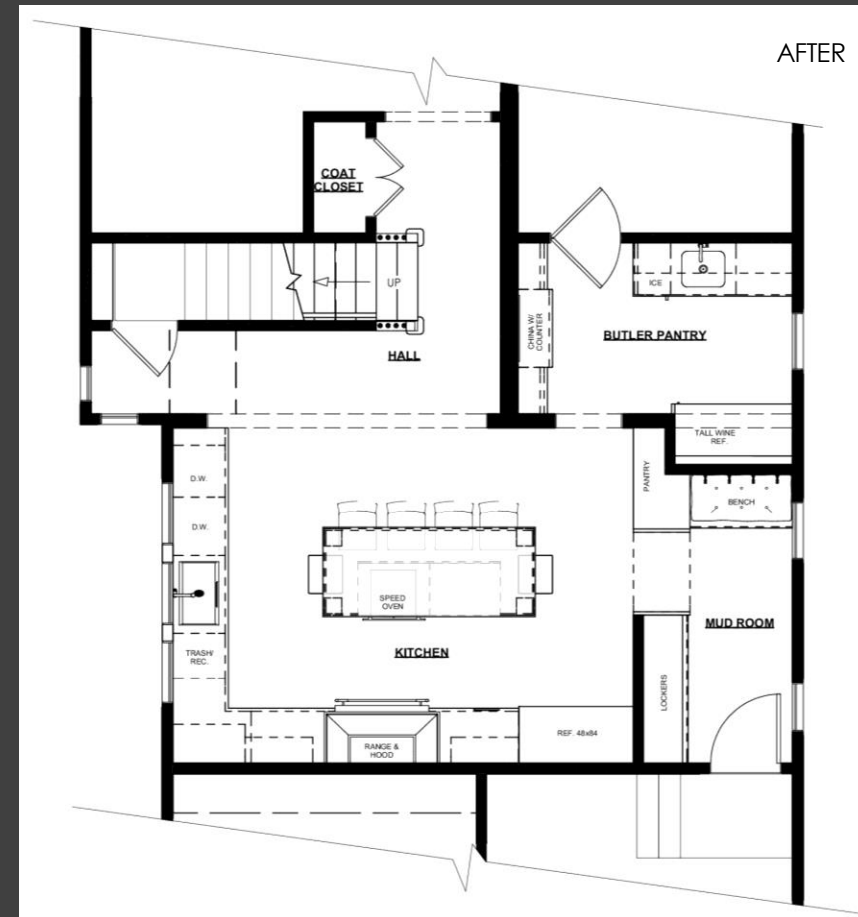
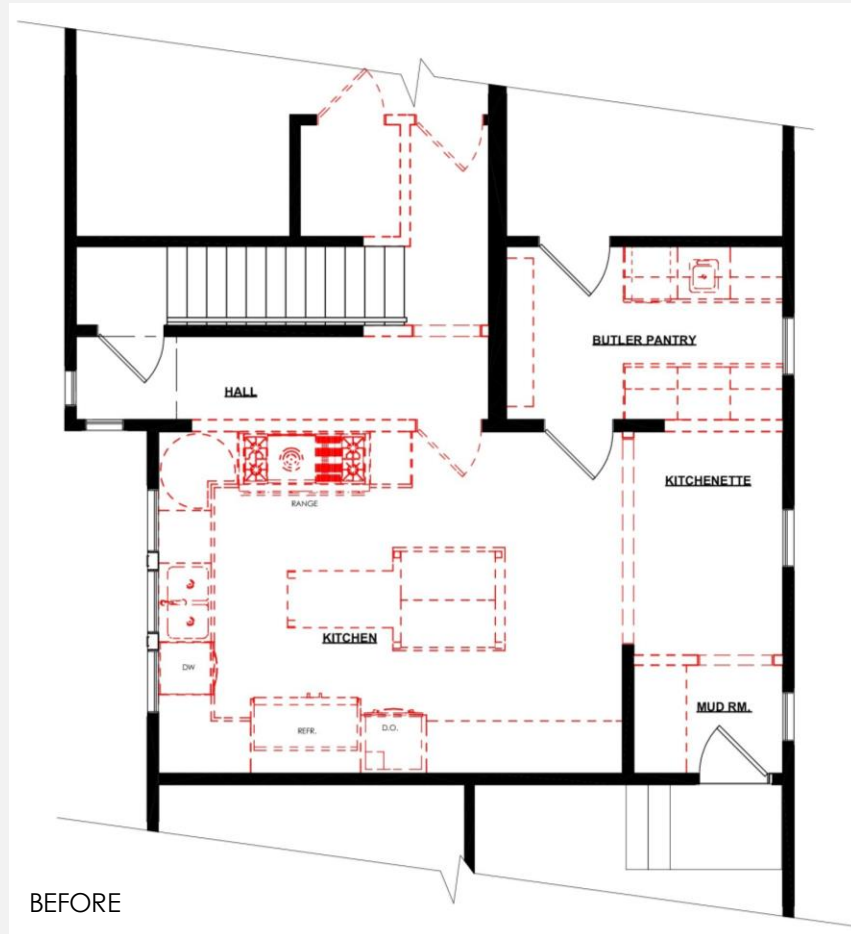


Client Objectives

The property's main attraction was its historical location and hillside bluffs. This unique home offered a fresh start for a family of four- but lacked the original character it once had. The client's wanted to give the 60s style kitchen an upgrade- restoring the home's original look and adding their own unique style. After listening to our client, we concluded that the renovation should focus on improving the home in these three main ways:

1. Keep the integrity of the home
 - Restore its original character
 - Add details that blend the past and the present
 - Showcase grand Moulding and features to highlight the style of the home when it was built.
2. Create a kitchen that felt open and inviting
 - Eliminate a wall in the kitchen to remove a small, cramped hallway that would create more room in the kitchen.
 - Seamless flow from the kitchen to the living room.
 - Integrate custom storage for optimal space.
3. Design a space for entertainment
 - Expand the kitchen
 - Install a large island and TV in the kitchen for gathering.
 - Design the Butler's pantry into a functional entertainment space.

Floor Plans



Tackling the Challenge

Project Challenges:

High on the priority list was transitioning the cramped kitchen into a welcoming floor plan. The original footprint of the kitchen consisted of large bump-out cabinets with a small island. The room was surrounded by four walls, making the space feel tight and dysfunctional. A narrow hallway led to the kitchen, leaving minimal walking space in a room that was often used. In a kitchen that did not have enough square footage- we needed to make room.

This created a challenge. To create a floor plan that was open and inviting, we needed to knock down the existing wall with the stove and eliminate the hallway to create more open space. Tearing down the wall required creativity in the new floor plan. We needed to open the room, but also needed to figure out a creative solution for storage space with one less wall.

Removal of this wall required our team to think creatively about the new floor plan to offer more storage and still create that open floor plan our clients needed.



BEFORE



BEFORE



Making life easier

Our clients longed for a unified space to be able to gather with friends and family in the kitchen and prep in the butler's pantry. With a love to host and entertain, an open kitchen plan was important to make it more conducive to their lifestyle. By removing that wall and adding custom cabinets, our team was able to transform the kitchen space into the perfect entertainment area.

Function:

The flow to get to the butler's pantry and through to the front of the home is much more functional. Sufficient and hidden organization creates more room for gathering and entertaining. This made our clients spend more time in the kitchen- instead of hiding from it.

Removing the bump-out cabinets and installing custom storage along the walls opened the main area and provided more space for a large island.

- Appliance garages now make room for additional counter space- with the ability to stay open or closed for entertaining.
- Marble backsplash tile adds durability and style to the walls- perfect for entertaining and yet purposeful for the family's needs.

Details are important:

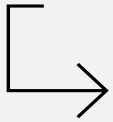
Our team kept the charm of the home by emulating the original crown molding of that time.

- New interior doors were constructed to resemble the original, and doorknobs were repurposed to add to the architectural style.
- A Calacatta Miraggio Gold quartz island with thick pedestal legs stands in the middle of the kitchen for hosting and food prep.
- A regal French range with gold and white accents complements the custom hood that adds sophistication and a modern touch to the space.
- Updated opulent lighting makes this room a showstopper- and provides brightness to a room that once felt dreary.

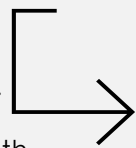
2023 COTY AWARDS - Residential Interior \$250,000 to \$500,000

Kitchen Transformation

Bulky appliances posed challenges for our clients when cooking and socializing. The lack of a unified style resulted in a disjointed space that was cumbersome to navigate.



The kitchen was dominated by narrow walls and bump-out cabinets, occupying a large portion of the room. These cabinets lacked functionality, disrupted the flow, and did not align with the style our clients envisioned.



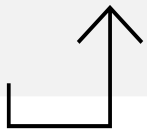
Kitchen Transformation



Kitchen Transformation



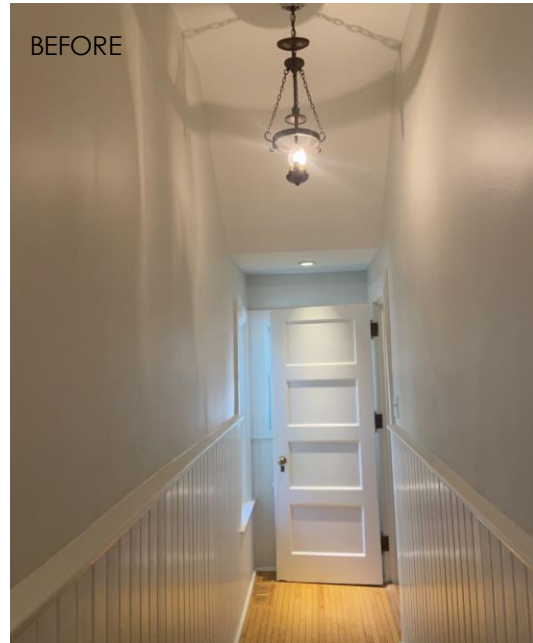
Kitchen Transformation



A confined and cramped kitchen made this corner dysfunctional. Our clients wanted cabinets to hide appliances and showcase their dishware. It was also lacking in space for people to cook comfortably.

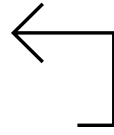


BEFORE



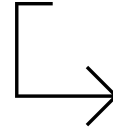
BEFORE

Kitchen/Entryway Transformation



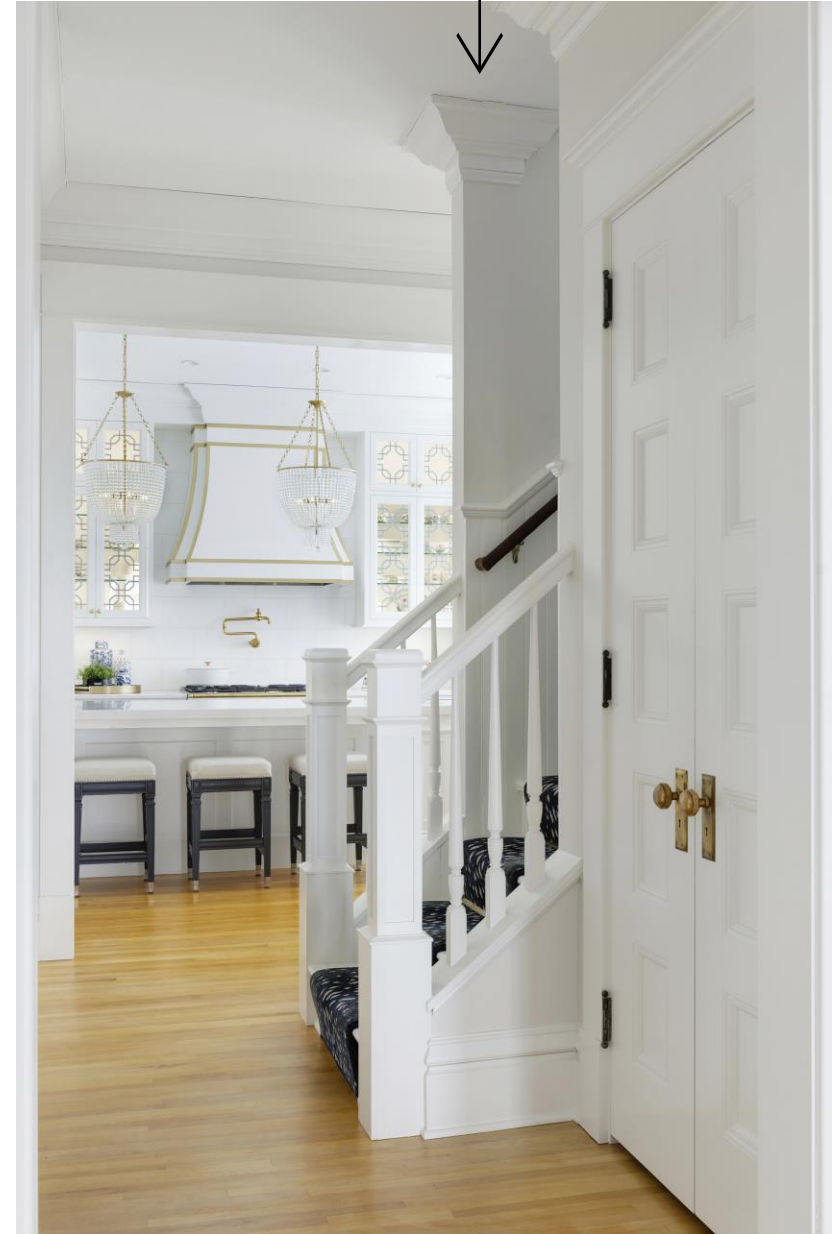
With homes constructed during the 1800s, this narrow hallway was common. Despite its uniqueness, it lacked practicality and posed communication challenges with people in adjoining rooms.

Removal of wall in the kitchen created more space and allowed for an open flow to the rest of the home.



Original Trim

Replicated Trim





Making Life Easier

The original pantry was odd and outdated. Previously used as storage and a space to store clutter, this unique area in the house had potential to become just the spot our client's needed.

The butler's pantry required upgrades to serve a purpose for hosting and gathering. Our clients desired a space that was unique to its own but still made sense and flowed toward the kitchen. With our clients being frequent hosts, our team needed to produce a storage plan for beverages, drinkware, and seasonal dinnerware.



BEFORE

Polished Butler's Pantry

Off the back of the kitchen, was an old butler's pantry that included a small doorway that led to some cabinets, with no use for entertainment. Our client's longed for a spot where they could prep drinks and mingle.

The pantry showcases custom navy cabinetry with intricate mullion design and brass pulls, antique mirrored cabinet doors, and multiple refrigeration appliances to organize beverages. As you follow the details to the ceiling, art deco tiles are shown throughout. The walk-up beverage bar stands as a symmetrical counterpart to the deep blue custom cabinetry.





BEFORE

Marvelous Upgrade

In the remodel, we upgraded to a walk-up beverage bar and undermount sink that adds functionality and easier cleanup to this room. The quartz countertops seamlessly complement the kitchen's style, incorporating similar design patterns throughout the house.





BEFORE

Elevated Escape

The other side of the original pantry consisted of a similar-style countertop. Our clients longed for more beverage storage and hidden storage for seasonal décor.

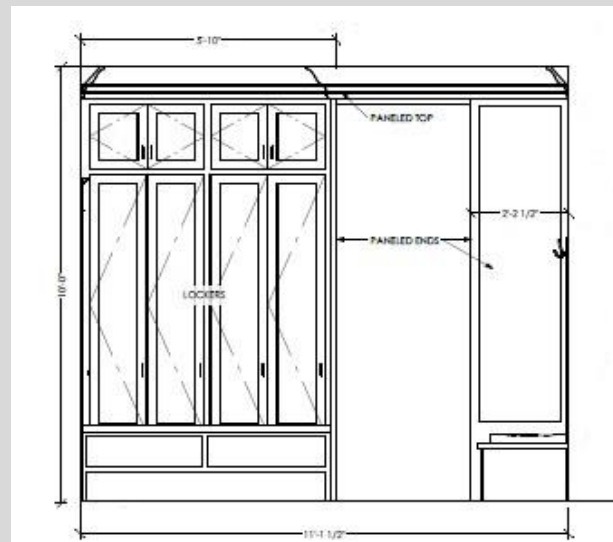
The remodeled butler's pantry consists of navy cabinets that run to the height of the ceiling, featuring full-size refrigeration appliances to organize beverages. Custom pull-out shelves along the wall act as a hiding spot for more beverages.



Mudroom Marvels

From the garage, was an open hallway with no specific function. On the left side, was the original kitchen. Our clients needed a designated area for shoe storage and a spot to take off their jackets. This would eliminate built up clutter that did not have a home.

Installing new walls, and custom cabinets, with hidden shelves underneath dedicated to shoe storage, made this the perfect mudroom. The welcome bench provides a comforting entry, with storage hooks for coats and bags.



Seamless Transition

As you enter the kitchen, you can seamlessly navigate through the butler's pantry and into the dining room. The dining room connects to the entry room, enabling a smooth flow back to the kitchen. This opulent kitchen is the ideal setting for sharing stories and relishing picture-perfect meals. Our clients now share the space with loved ones and utilize their kitchen to suit their energetic lifestyles.

