

NARI MINNESOTA—2023 COTY AWARDS

Project: The Emerson Enchantment Kitchen: Natural Inspiration Meets Bold Elegance

Category: Residential Kitchen \$150,000 to \$200,000

Introducing the "Emerson Enchantment" kitchen remodel, a harmonious fusion of inviting warmth, serene whites, the gentle elegance of light wood, and the captivating allure of mixed metals. This transformation is a symphony of textures, colors, and materials, designed to envelop you in a soothing embrace. This kitchen remodel took this closed-off 1964 kitchen and opened new possibilities with an open-concept layout that effortlessly connects the kitchen to the adjoining living and dining areas, while maximizing functional work and storage space.



Homeowner Objectives:

Improve Functionality: the original closed-off kitchen is now open to the dining and living room. Custom cabinetry layout designed to better accommodate the clients' daily routines including a designated coffee bar, spice rack storage by the range, and larger pantry by the fridge.

Increased Storage Space: with all new custom cabinetry and an added buffet we were able to maximize kitchen storage space to reduce clutter and allow for better kitchen organization. The soffit was removed to allow upper cabinets to expand to the ceiling.

Improved Lighting: with a combination of natural light from a new exterior French door, recessed lights, pendant décor lights, and undercabinet lighting the clients now have improved visibility at the various kitchen workspaces.

Upgraded appliances.

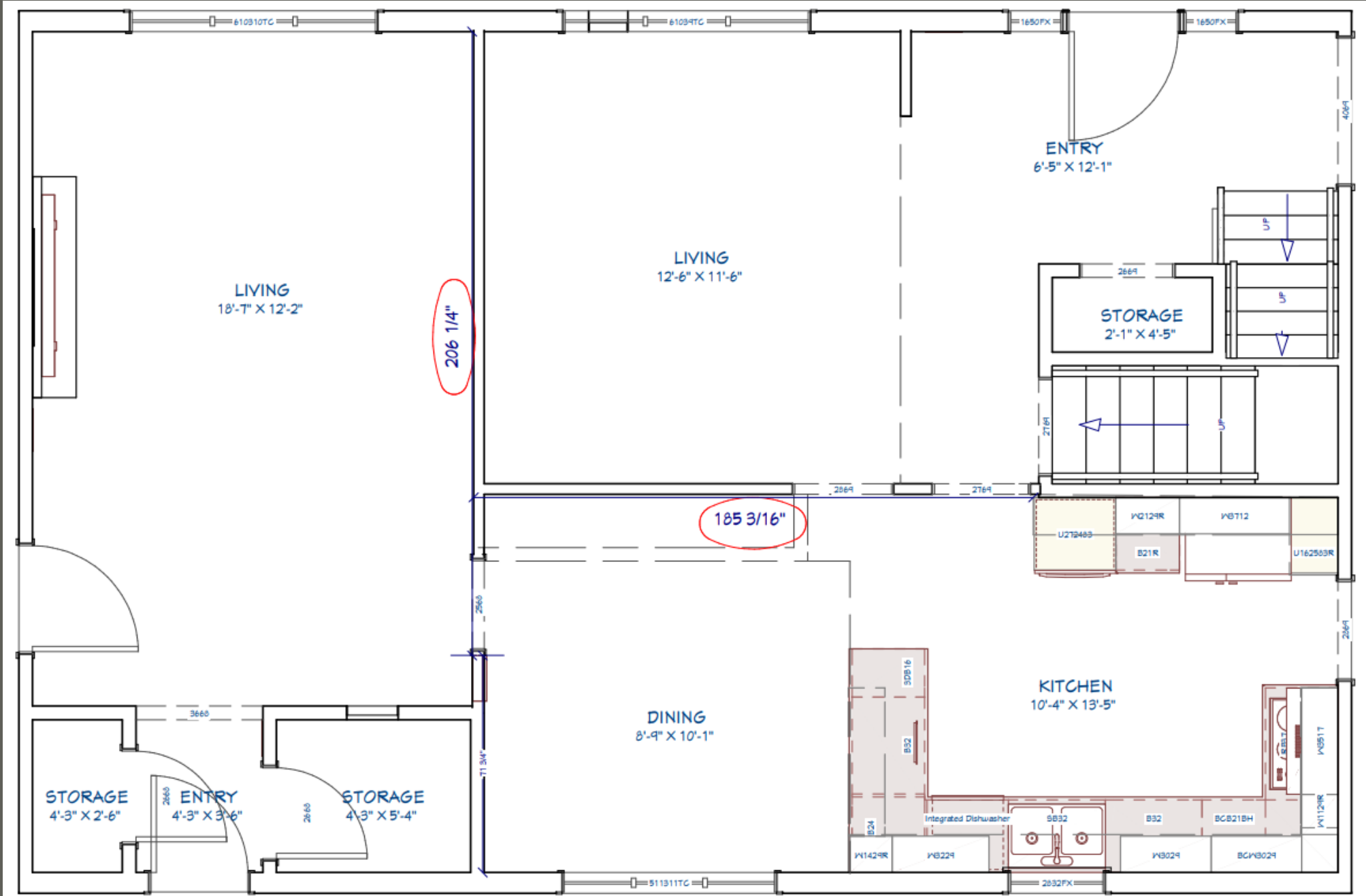
Quality materials: with a toddler and a baby, these clients were looking to use durable and high-quality materials for product selections to ensure longevity.

Family-friendly and Entertainment Layout: the clients wanted an area to accommodate both a larger workstation and a gathering hub but knew an island layout wouldn't be able to fit within the constraints of their kitchen footprint. Expanding the peninsula and including counter seating allowed for them to incorporate all the functions they sought in an island. Now the kids can enjoy breakfast or snacks while parents are working in the kitchen, and they can entertain family and friends in the space easily.

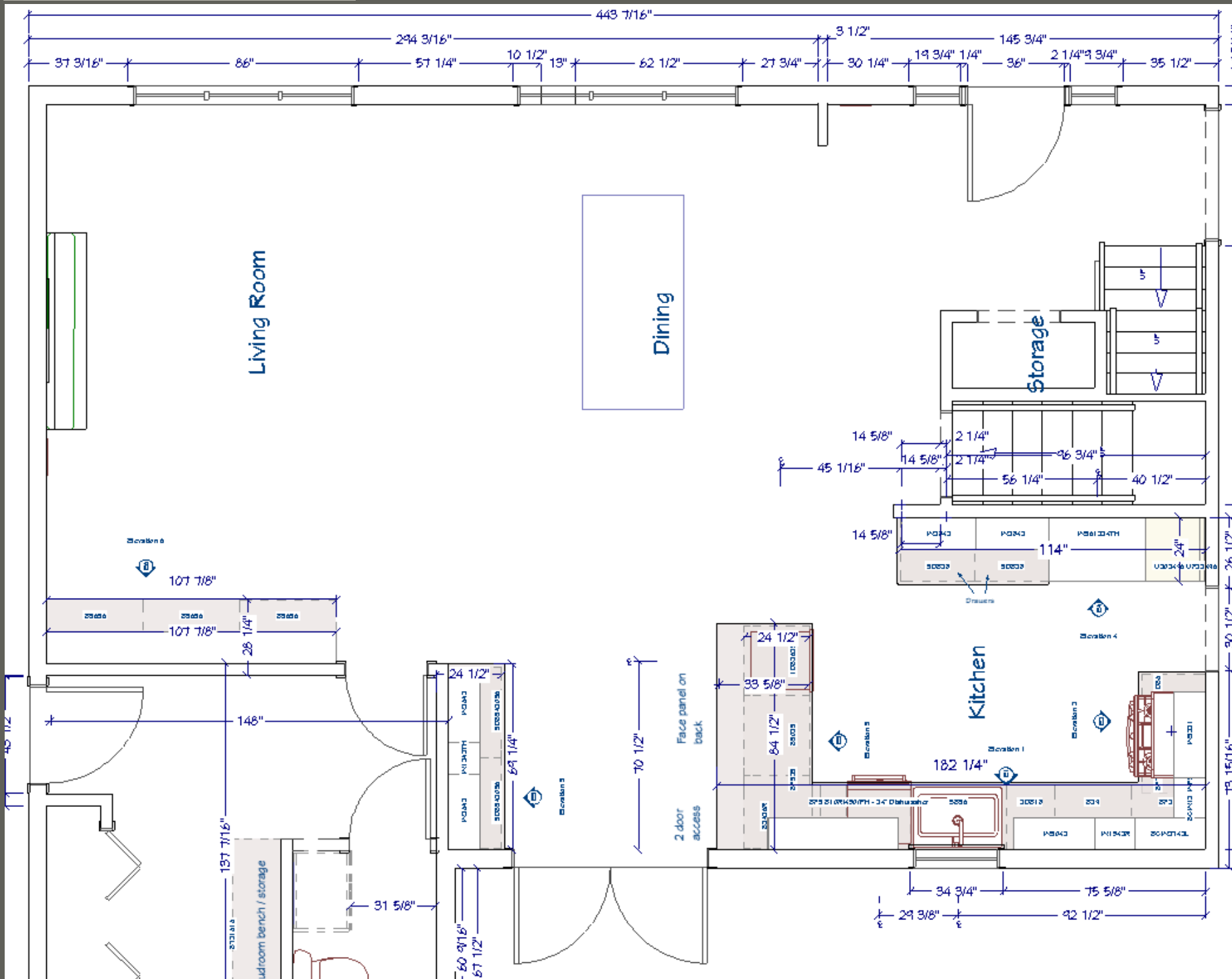


BEFORE FLOORPLAN

To achieve our kitchen renovation goals, we needed to remove walls on the main level of the home. To help visualize the enhanced functionality of the kitchen space, we've incorporated the affected rooms into the floorplan.



AFTER FLOORPLAN



Design:

The design aesthetic of the space was centered around natural elements: natural light, maple wood tones, iron-inspired accents, and greenery. The palette is based in soft, milky whites and warm, honeyed wood tones that dominate the space to create a soothing foundation. With added unexpected twists of mixed metals, bold countertop veining, and dark buffet cabinetry, the space becomes simultaneously captivating and welcoming.

Design Highlights:

- Three-toned cabinetry between the kitchen and buffet
- Panel fridge and dishwasher
- Open shelving
- Hand-made appearance to ceramic subway tile laid up to the ceiling.
- Solid surface quartz countertop with dramatic veining
- Mixed metal finishings of cabinetry hardware, plumbing fixture, and pendant lighting
- LVP flooring



Before and After



Before and After



Before and After



Before and After



Before and After









