



NARI MINNESOTA
2023 AWARDS
OUTDOOR LIVING PORCH

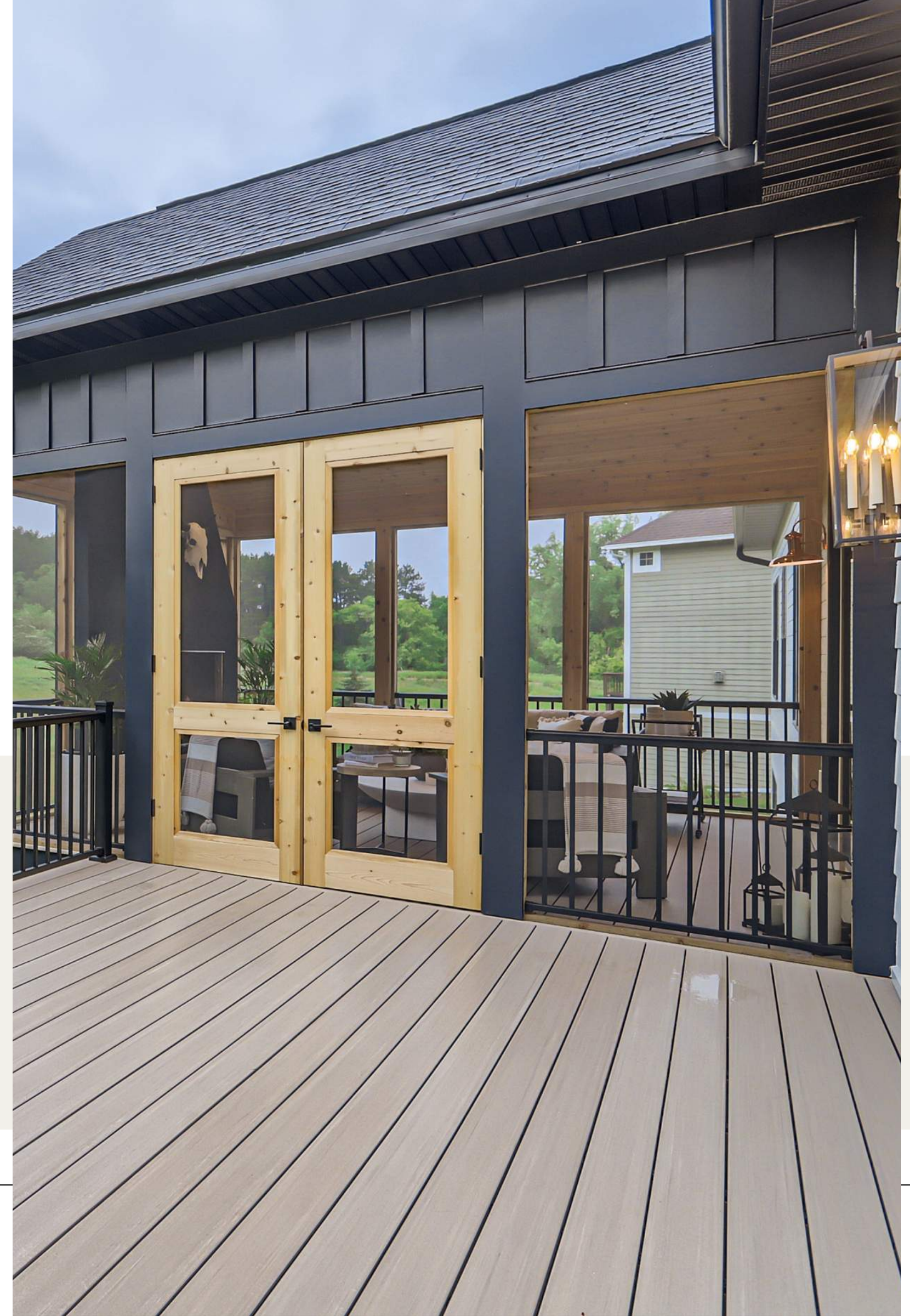
BEHIND THE REMODEL

Our clients desired an expansion of their outdoor living space to incorporate an area for cooking and dining, along with a screened lounge space that was free from pesky insects. The homeowner also wanted to add personality and allure to the relatively plain back elevation.

NARI

OUTDOOR LIVING PORCH

NARI COTY AWARDS

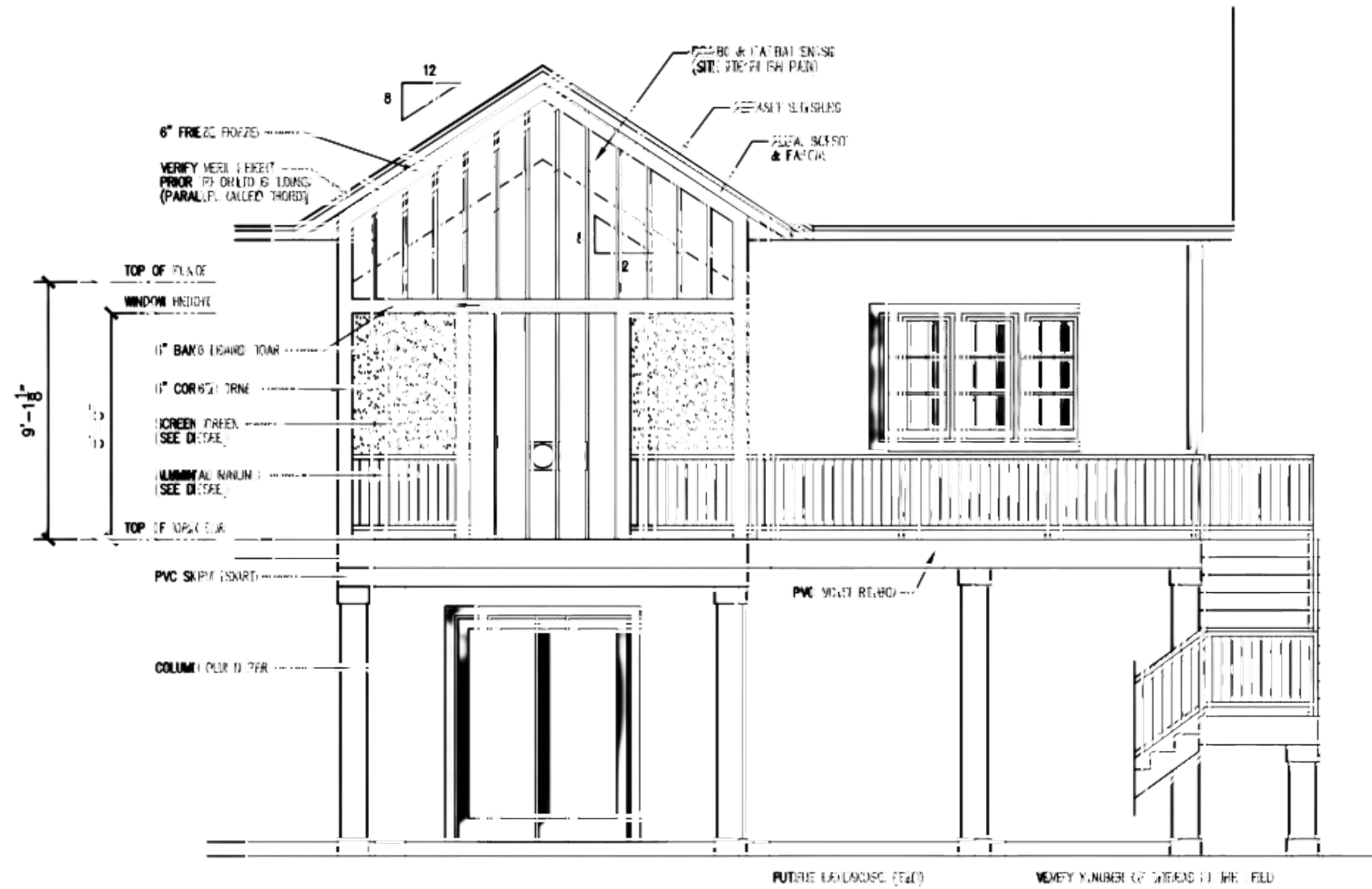




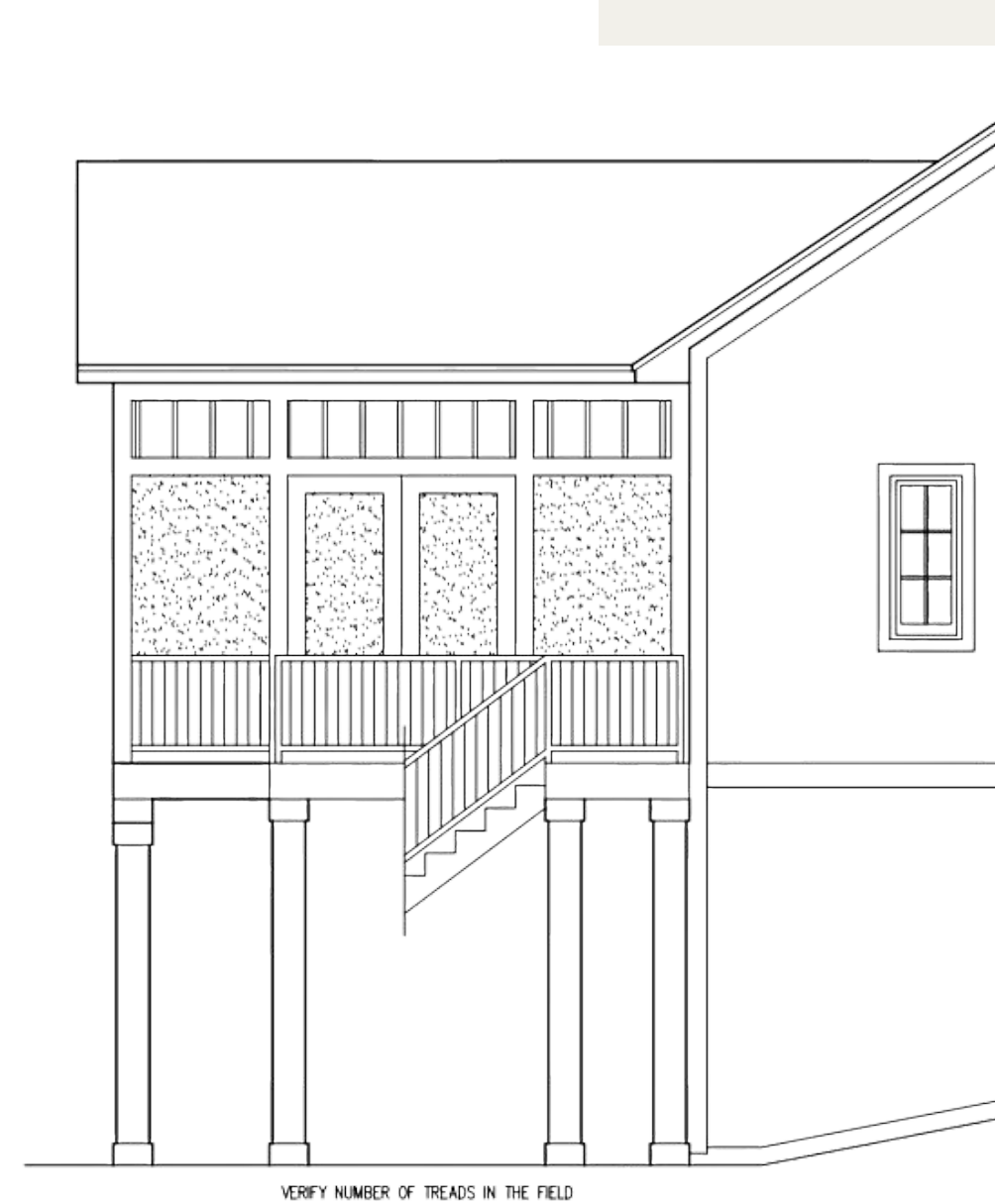
MEETING CLIENT NEEDS

- Cedar ceiling
- Custom fireplace
- Custom screen panels
- Double entry door from deck to a porch
- Ceiling fan
- Maintenance free decking
- Bold exterior color to be consistent with front elevation

PORCH PLANS

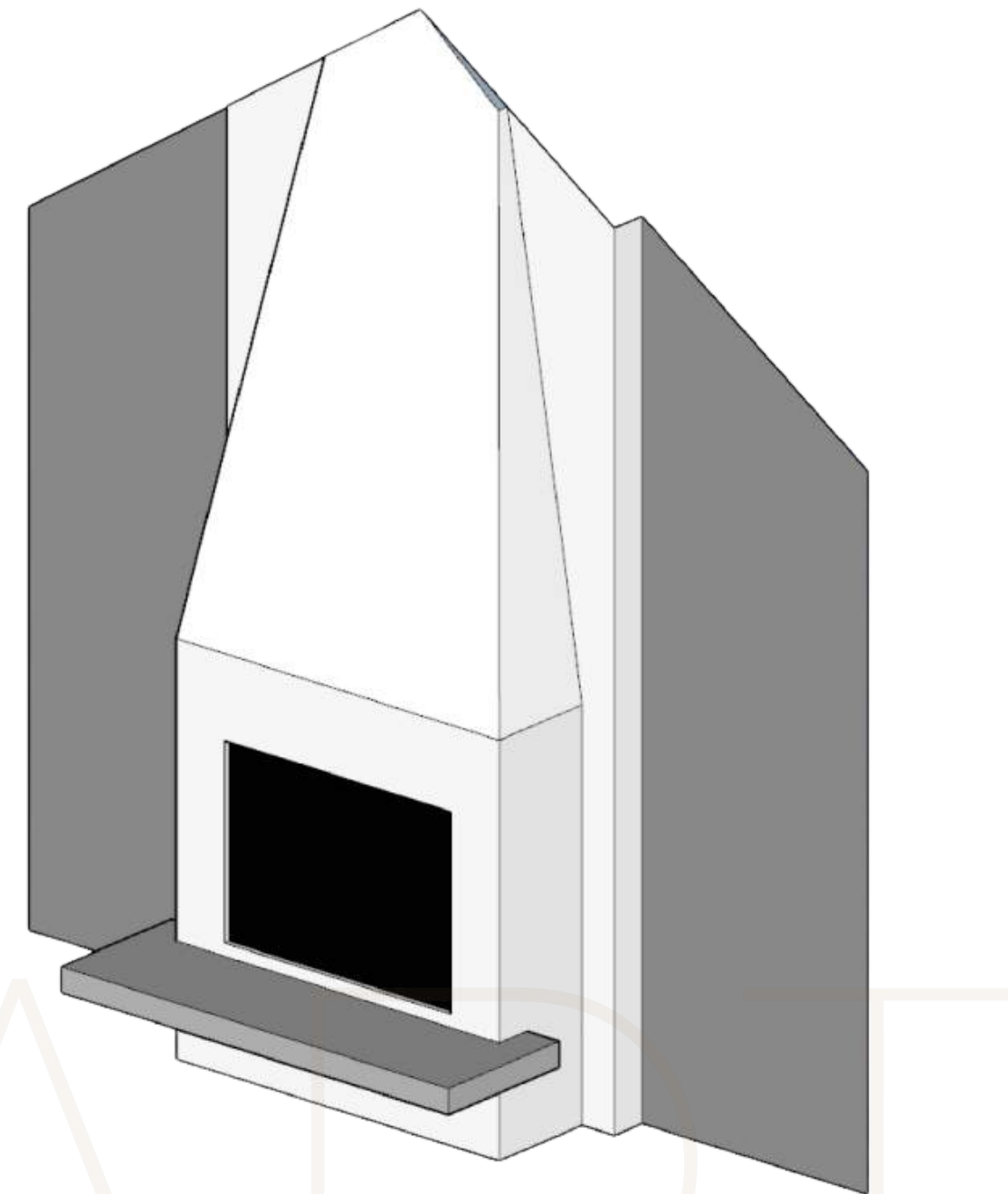
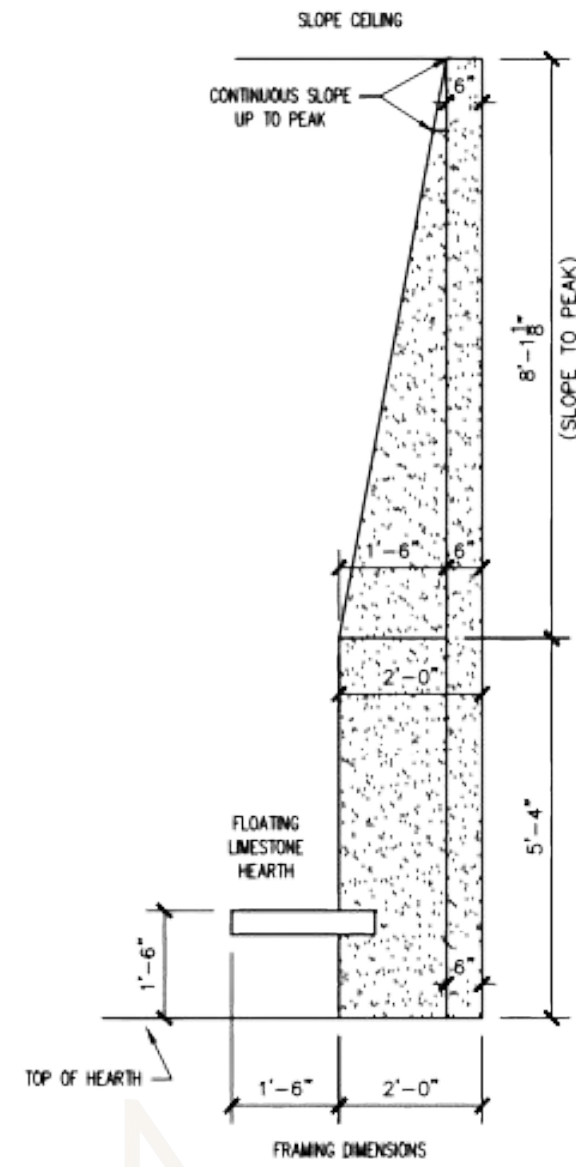
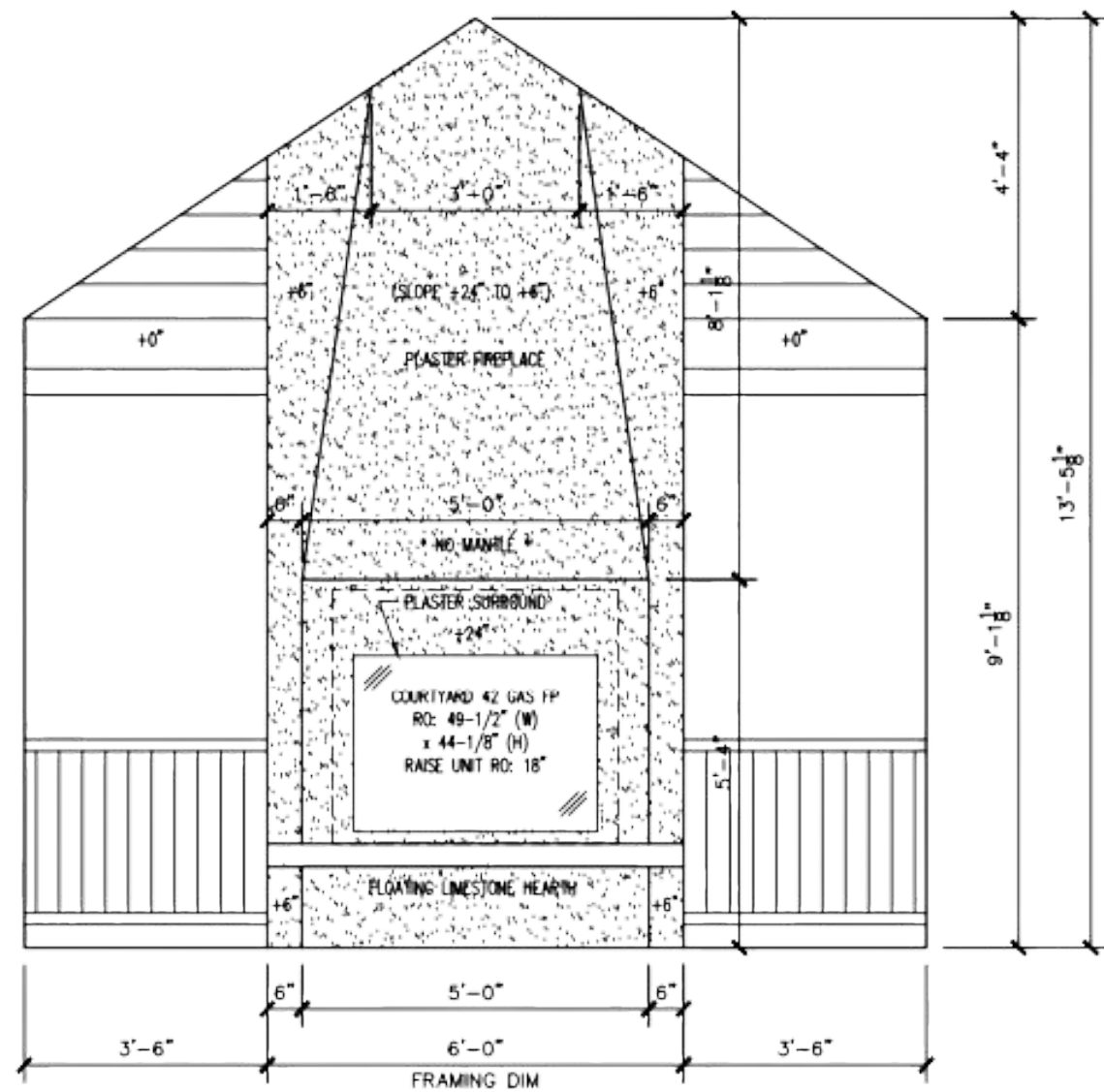


1A
A-1
REAR ELEVATION
SCALE: 1/4" = 1'-0"



1B
A-1
SIDE ELEVATION
SCALE: 1/4" = 1'-0"

DETAILS



8
A-2 FIREPLACE DETAIL
SCALE: 3/8" = 1'-0"

BEFORE & AFTER





BEFORE & AFTER

N A R D T



BEFORE & AFTER

N A R D



BEFORE & AFTER



BEFORE & AFTER



FUNCTIONALITY & AESTHETICS

- Custom black plaster fireplace
- 4-inch thick floating limestone hearth
- Unique gas-burning fireplace unit with an open front to mimic a traditional wood-burning fireplace.



PROJECT CHALLENGES, CRAFTSMANSHIP, AND INNOVATIVE METHODS & USES



- Limited access to the rear of the house
- Protecting the existing landscaping
- We had to dig up massive boulders to correctly place footings
- Needed to get an engineering report and install extra deep footings because of unstable soil conditions.
- The homeowner wanted a floating raised hearth stone, the challenge was to support a 4-inch thick 600-pound limestone slab. We found a blacksmith who could manufacture a custom steel support structure that would be hidden from view.