

## NARI MINNESOTA – 2023 COTY AWARDS

### PROJECT: ENGLISH COTTAGE BATH

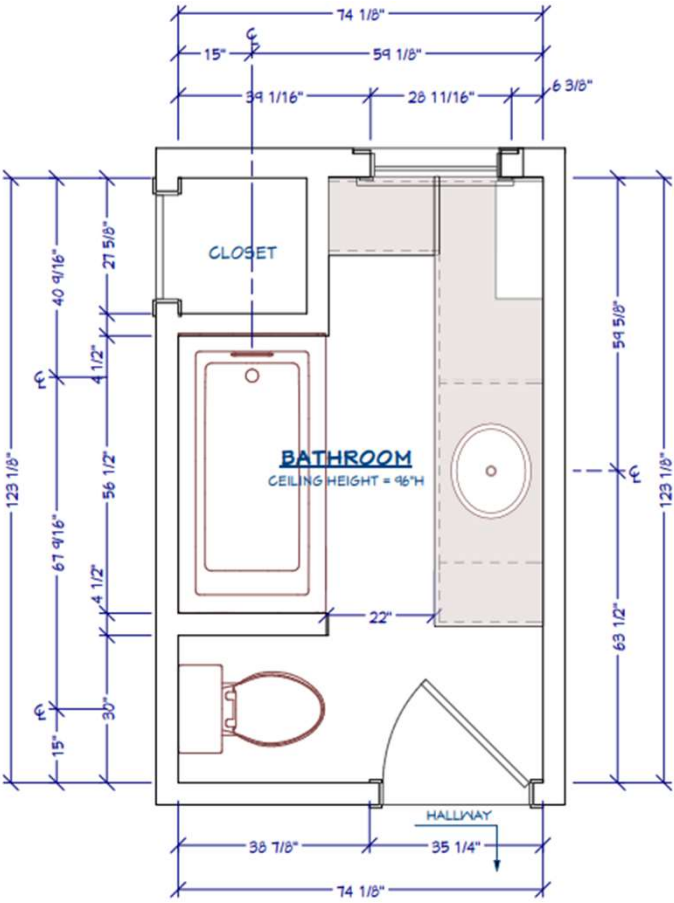
#### CATEGORY: Residential Bath \$40,000-\$70,000

This bathroom is the only bathroom on the main level of a 1940's rambler and it doubles as the Master Bathroom, so the new layout needed to serve many functions. The original floorplan was very confined with its 22" walkway. The client's desire was to get rid of the tub that they never used and create a brighter more updated bathroom that they could use day to day but also make it inviting for their guests. We got rid of the tub and took space from a rarely utilized closet to create a large walk-in shower with bench seat. A new frosted glass shower window was designed to bring in light but obscure the view and shine through the glass wall of the shower to brighten the entire bathroom. We created a larger walkway of 39" which allows easy movement throughout. We added several tall storage cabinets with center drawers directly across from the vanity that could be used to store makeup, toiletries, lotions, hairbrushes, and anything thing else used day to day. The cabinets also had tall doors to store larger items like towels and extra supplies. The recently retired homeowners wish was to age in place, so we added the following safety and convenience features: grab bars, a shower seat, a bidet seat, wider walkways and storage at heights that are easy to reach. The warm white cabinetry, quartz countertops, and marble tile combined with brushed gold finishes creates a warm and inviting space for guests and homeowners to start and end each day. All who enter love to talk about the automated toilet lid with light. Much discussion is had about all its fun features, including cleaning wands and sprays with appealing scents. The biggest hit is the heated seat! Second Designer on the project- Michal Crosby of Michal Crosby Designs, Inc.



ENGLISH COTTAGE BATHROOM – RESIDENTIAL BATHROOM \$40,000 TO \$70,000

BEFORE PLAN



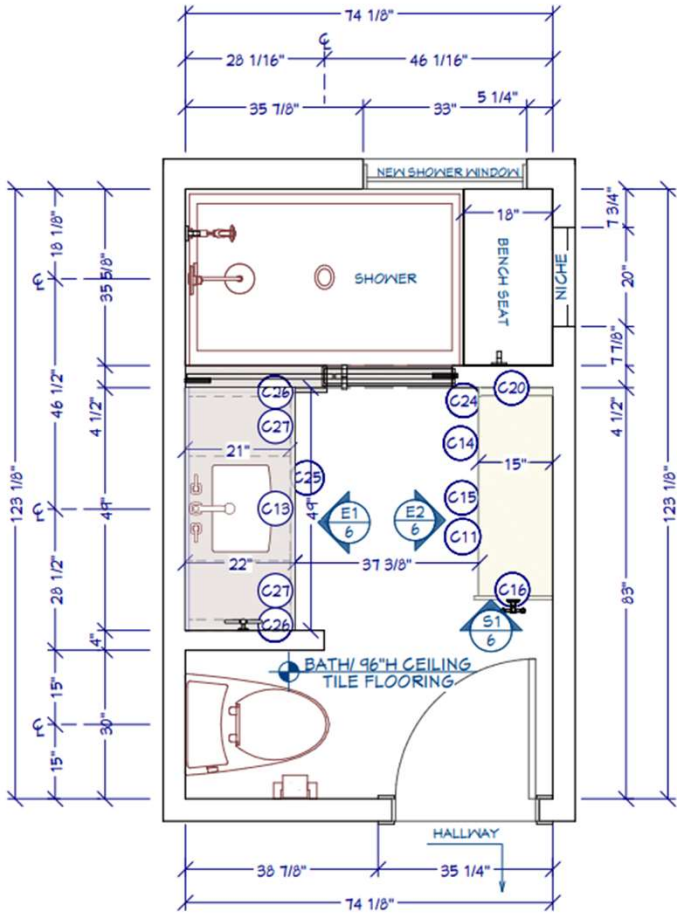
AS-BUILT FLOOR PLAN  
1/2" = 1'

BEFORE PHOTOS



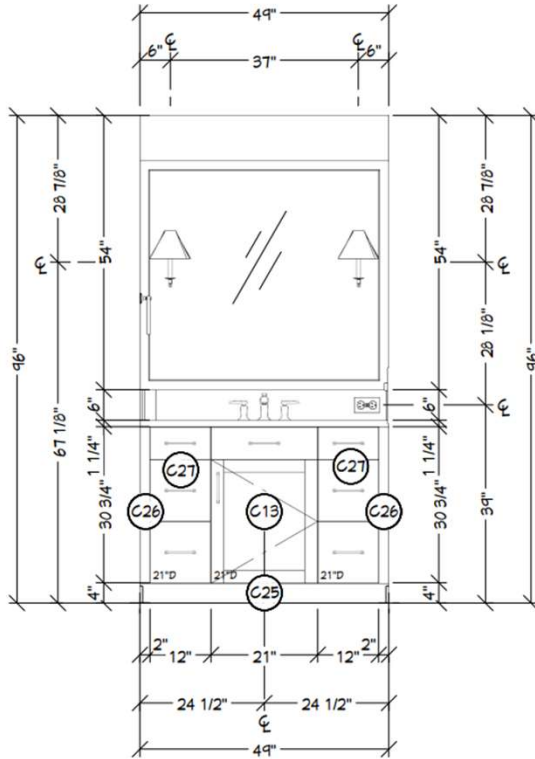
ENGLISH COTTAGE BATHROOM – RESIDENTIAL BATHROOM \$40,000 TO \$70,000

AFTER PLAN

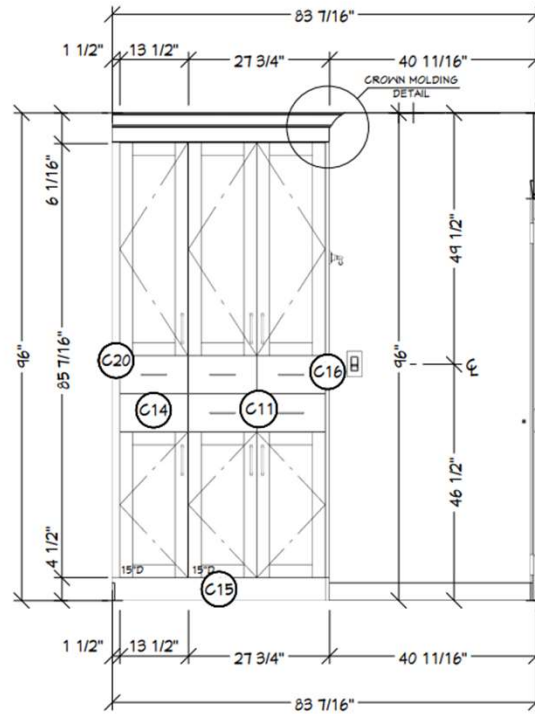


FLOOR PLAN  
1/2" = 1'

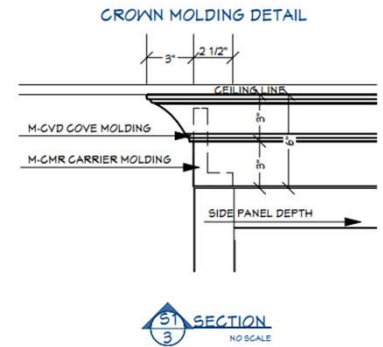
AFTER ELEVATIONS AND CROWN DETAIL, E1,E2, S1



**E1**  
3  
ELEVATION  
1/2" = 1'



**E2**  
3  
ELEVATION  
1/2" = 1'





# PROJECT CHALLENGES



- The existing bathroom wall was built with 2x4's on end. This needed to be removed and re-built to accommodate the design without impacting the adjoining rooms.



ENGLISH COTTAGE BATHROOM – RESIDENTIAL BATHROOM \$40,000 TO \$70,000

AFTER PERSPECTIVE RENDERINGS



ENGLISH COTTAGE BATHROOM – RESIDENTIAL BATHROOM \$40,000 TO \$70,000

## FORM

- The original bath had a very narrow walkway which made the space feel very small and closed in. The new layout, with a different shower orientation gave a more open feel.
- Eliminating an existing closet in an adjacent room, allowed the new location of the shower with a pony wall and glass panel, creating a large, spa like shower with a built-in bench.
- Removing the barely used tub area, across from the vanity area, gave the room a clean, fresh look that is timeless.
- A frosted glass window in the new shower area was designed to bring in light, obscure the view, and let natural light into the space making the bath seem larger.
- Materials and finishes helped create an inviting space for the homeowners and their guests using warm white cabinetry, quartz countertops, and marble tile combined with brushed gold hardware and accessories.





## FUNCTION

- Creating a larger shower with a built-in bench provides easier access for aging in place considerations for the clients who looked to remain in the house long term.
- Through the reallocation of space, a larger walkway was created which allows for easy movement throughout.
- The addition of several tall storage cabinets with center drawers directly across from the vanity allows for linen and toiletry storage.
- The recently retired homeowners wish was to age in place, so we added the following safety and convenience features: grab bars, a shower seat, a bidet seat, wider walkways and storage at heights that are easy to reach.
- An automatic toilet lid with light, cleaning wand and sprays as well as a heated seat, gave all the features that you would expect in a spa bath.

