



Residential Interior Under \$100K

PROJECT COMPLETED: 10/11/22

PROJECT SCOPE & OBJECTIVES

The homeowner's top goals were to have an efficient space to care for his guitars, play music without disturbing the rest of the house, and a "man cave" for him and his sons. He expressed the hassle of maintaining the care for so many guitars and the pain of having to set up and put away equipment to play his music.

Our project goals were as follows: 1) To build a guitar humidor display case in the hallway leading to the tucked-away music room. The humidor display case needed to tie in aesthetically with the rest of the lower level it connected with and enhance the artistic beauty of the guitars for all to enjoy. 2) Build custom cabinetry in the music room where amps and other equipment could be conveniently stored and require minimal effort for setting up and using. This custom cabinetry also needed to hold a large-screen TV.

CHALLENGES & SOLUTIONS

One of the project's challenges was the mechanics of building a proper humidifying display while showcasing the beauty of the guitars with no compromise to the maintenance function. The intakes were built into the ceiling of the case, with the return and controls on the side of the case. To ensure that the display case maintained its proper humidity, we used weather stripping between the glass doors to keep the controls accurate. We also had to move the entry to the mechanic room to the far left at the end of the hallway to maximize the guitar case.

The guitar display was located along the hallway that led to the music room but overlooked the public area of the lower level. To tie it in with the rest of the space, we used rustic elements such as Forever Barnwood for the back wall of the case and for the custom cabinetry. This gave it a lovely rustic and natural appeal that beautifully complimented the guitars while seamlessly blending in with the rustic elegance of the lower level.

RESULTS

The final results produced a beautifully lit, functional guitar case and a music space that encouraged creativity, both seamlessly tying in and enhancing the experience of the lower level.

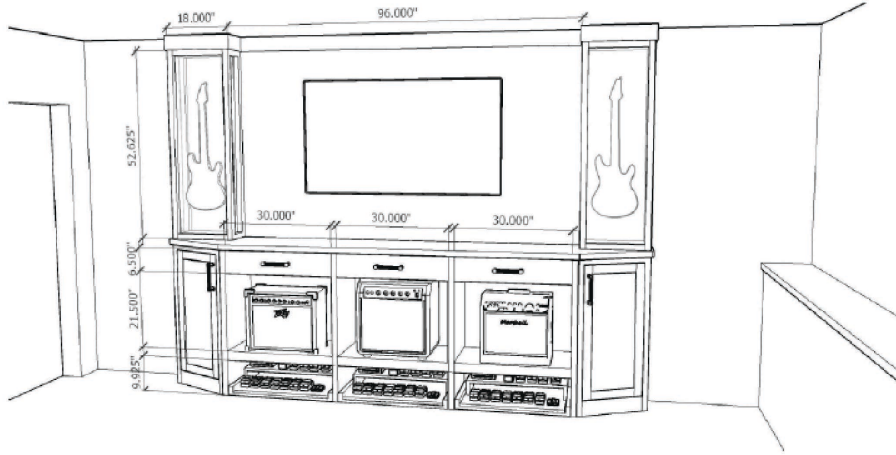
Not only did it beautifully display his guitar collection and enhance the lower-level experience, it also served a very significant function for the maintenance and care of the instruments. The new case eliminated the time it took to maintain the guitars and gave the owner peace of mind his instruments are well maintained throughout the seasons.

The music cabinetry conveniently stored their amps and music equipment with the drawer slide and allowed two spaces for displaying a guitar. This cabinet used the same wood used in the guitar humidior, perfectly tying in with the new guitar humidior and with the rest of the lower level.

The clients said the project exceeded their expectations and they were very happy with the results. They also mentioned how much they loved using the space and how much they enjoyed working with our team. They've worked with us before on other projects and have stated how much they trust in our work.

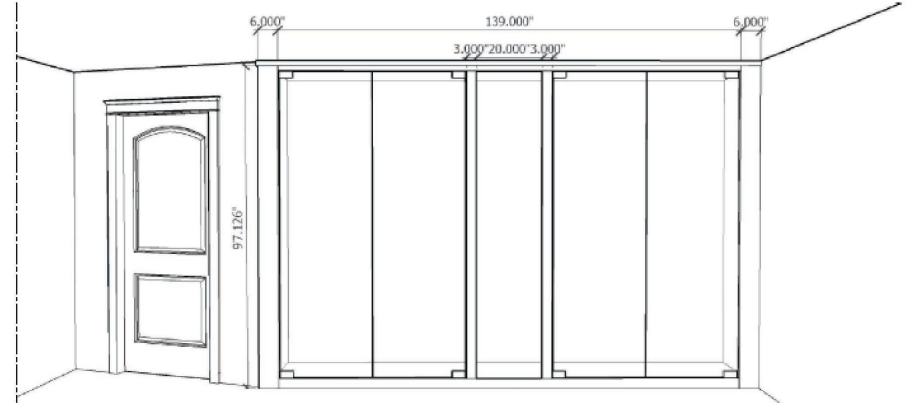
100 WORD SUMMARY

The homeowner needed a unique case for his guitar collection that would maintain the proper humidity throughout the seasons and a functional cabinet for storing his amps and other music equipment. We built a floor-to-ceiling guitar humidor display case in the hallway, overlooking the public space of the lower level and leading to the music room at the end of the hallway. We built a custom cabinet in the music room for easily storing and using the equipment—both spaces seamlessly tie in with the rustic elegance of the lower level. The results exceeded the homeowners' expectations!



NOTES:
ADDITIONAL
PROVIDED!

1 PROPOSED INTERIOR PERSPECTIVE (MUSIC ROOM)
M.B. R.S.



NOT
ADD
P.N.C.

1 PROPOSED INTERIOR PERSPECTIVE (HALL)
M.B. R.S.



2 PROPOSED INTERIOR PERSPECTIVE (MUSIC ROOM)
M.B. R.S.

In lighting from plans and specifications the colors notwithstanding that any work not depicted in
outside the scope of work and will not be included in the work to be performed.



AFTER



BEFORE



AFTER



AFTER



AFTER



AFTER