



Residencial Interior

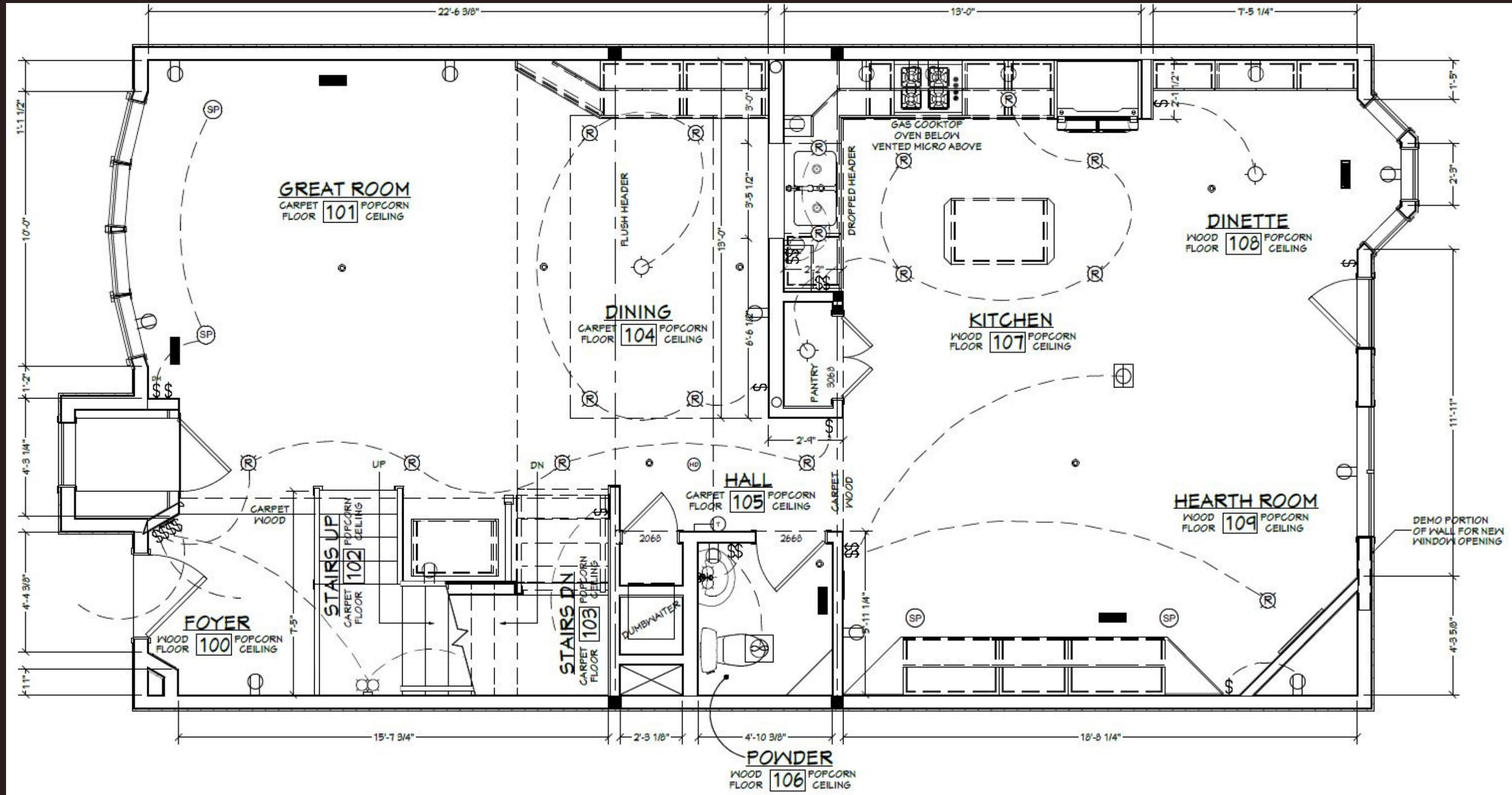
\$100K-\$250K

A photograph of a row home with a stone facade and a black wrought-iron fence in the foreground. The text is overlaid on a semi-transparent white box.

Row Home Panache

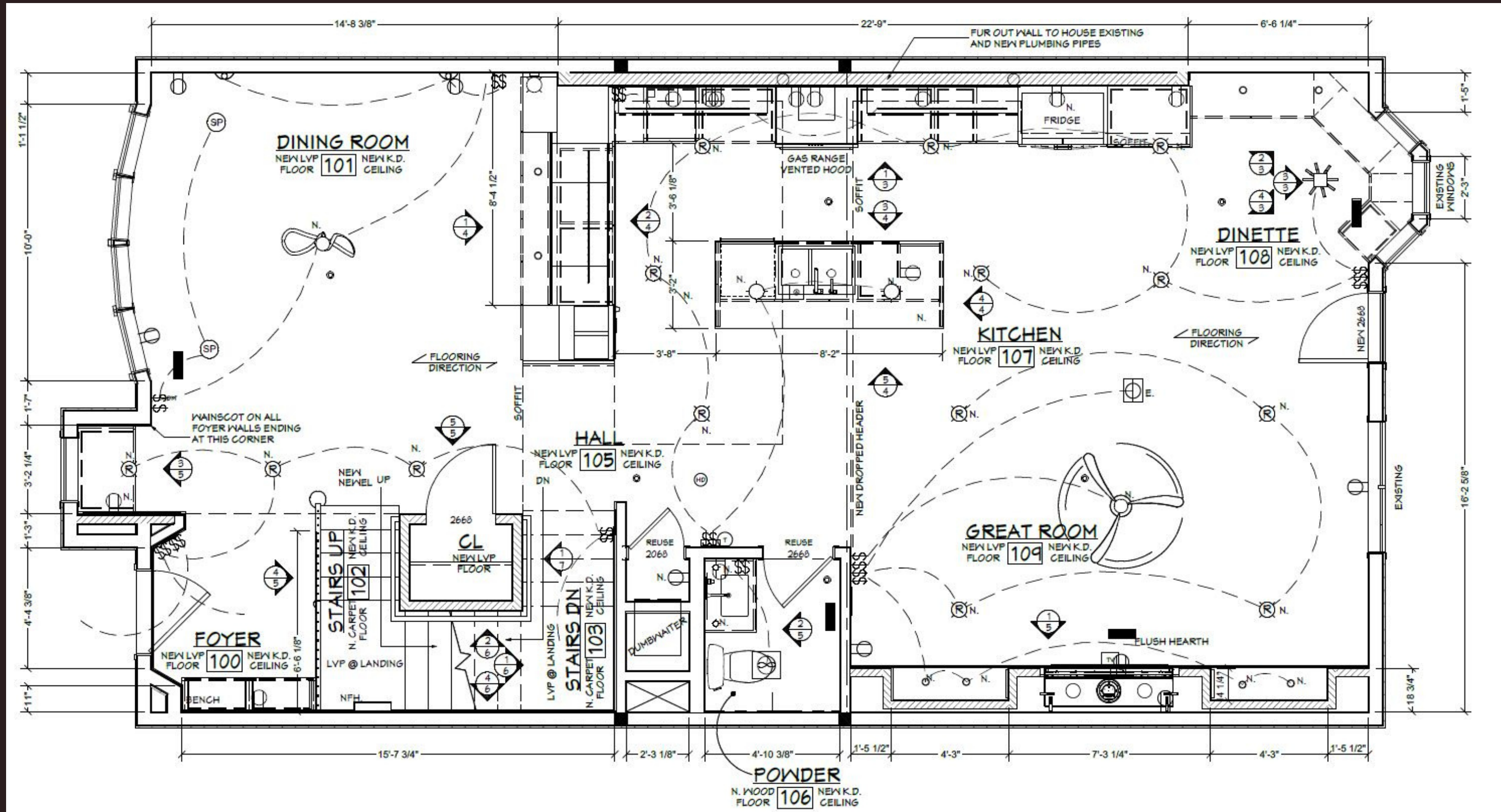
This spectacular row home was an incredible opportunity to showcase spatial planning, millwork and individualized touches from the homeowner. Our team was challenged with not being able to remove or relocate HVAC soffits so elements of the kitchen were carefully placed to feature them. A combination of rift cut and quartersawn white oak was used as the kitchen and dining perimeter while the homeowner's love for navy was featured on the island. The foyer makes a grand entrance with custom wainscot paneling and a "hidden" closet leading you into the dining room with chevron wine storage. A small powder room off the kitchen showcases another homeowner favorite with a blue floating vanity and large scale wallpaper. Kitchen soffits were accented with oak to create a feeling of grandness. Gold hardware and puck lights are incorporated in all areas for softness while marble counters and backsplash create a timeless, elegant Kitchen.

ROW HOME PANACHE



Before plan shows the challenges of soffit locations and a dated layout.

ROW HOME PANACHE



After plan shows the success of relocating spaces to maximize layout and the improvements in kitchen workflow.

Vision becomes reality

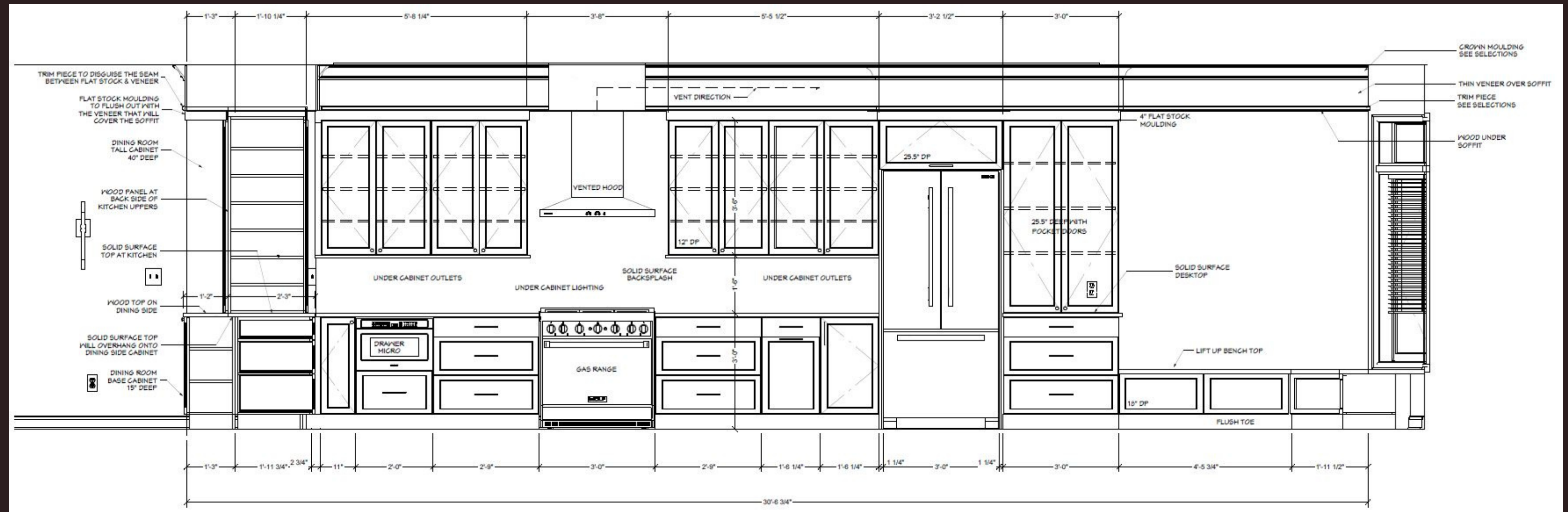


The foyer was transformed by relocating the closet and drop zone then trimming out everything in custom wainscot paneling.

ROW HOME PANACHE



Attention to detail



Our team meticulously covered every detail from floor to ceiling in this kitchen and dinette to ensure the perfect outcome.

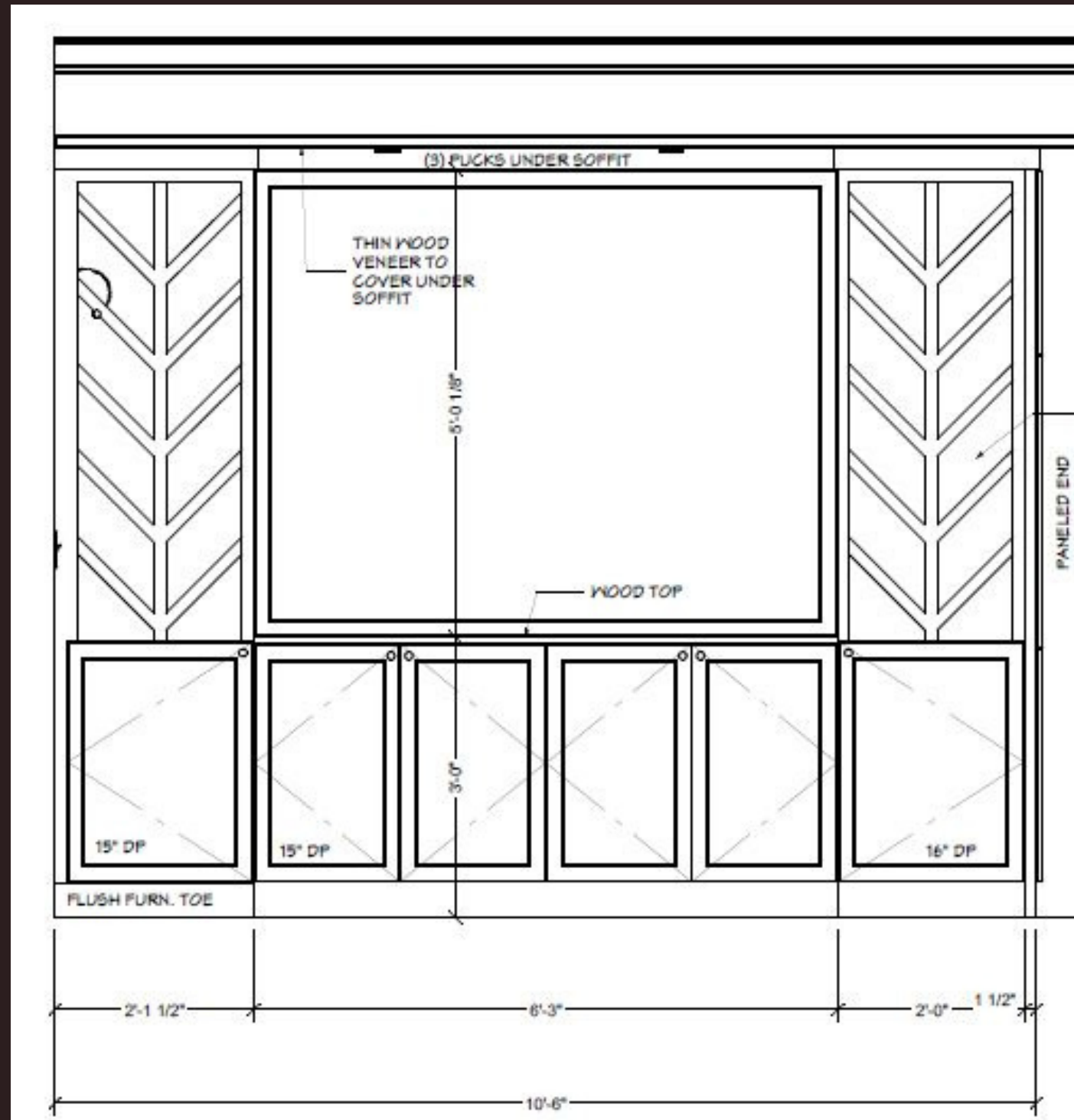
ROW HOME PANACHE



ROW HOME PANACHE

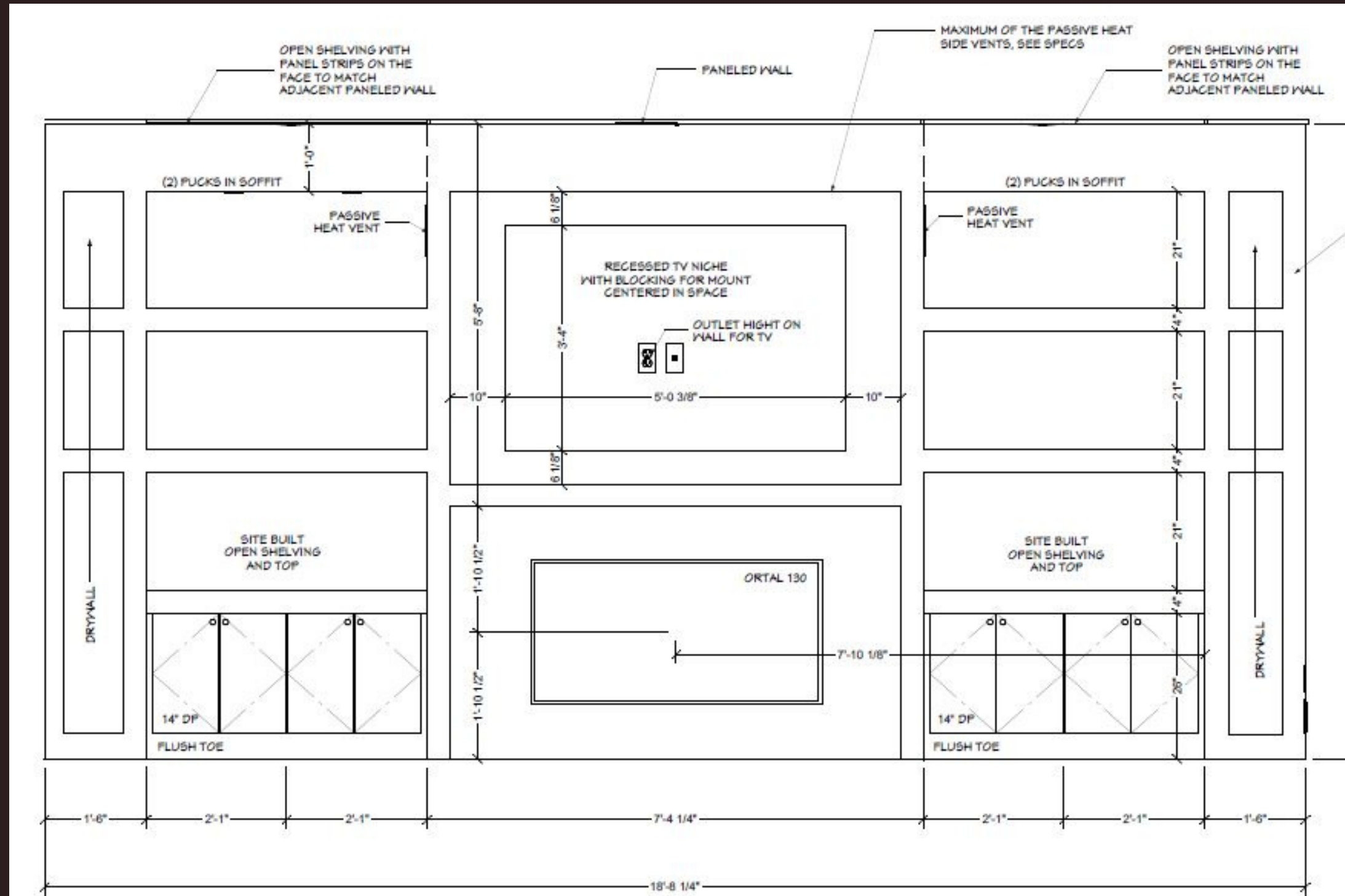


ROW HOME PANACHE



Fun chevron wine storage was created in the dining room along with a niche to display the perfect art piece.

ROW HOME PANACHE



A new entertainment wall was created with fireplace, frame tv, book & decor niches and lighting to accent throughout.

ROW HOME PANACHE



ROW HOME PANACHE



After the kitchen was moved over it left ample space for full sized furniture in the new great room

ROW HOME PANACHE



ROW HOME PANACHE



An under utilized buffet was eliminated and replaced with a built-in banquette seat.



The powder bath off the kitchen was kept in the same place and appointed with new fixtures and finishes.