

# NARI MINNESOTA – 2023 COTY AWARDS

PROJECT: Minneapolis Classical Exterior

CATEGORY: Residential Exterior \$100K - \$200K

The repeat client of this classic early 1900's house acknowledged it was time to tackle the uninteresting front of the house. The small triangular front entry roof didn't have the needed scale or presence for a striking covered entry befitting the rest of the house, and the second-floor bay window – an odd embellishment had to go. Installing a new second level window and a covered front entry with Tuscan columns, barrel vaulted roof with standing seam roofing was just what this home needed. Fresh siding finishes and this home now certainly stands on its own.



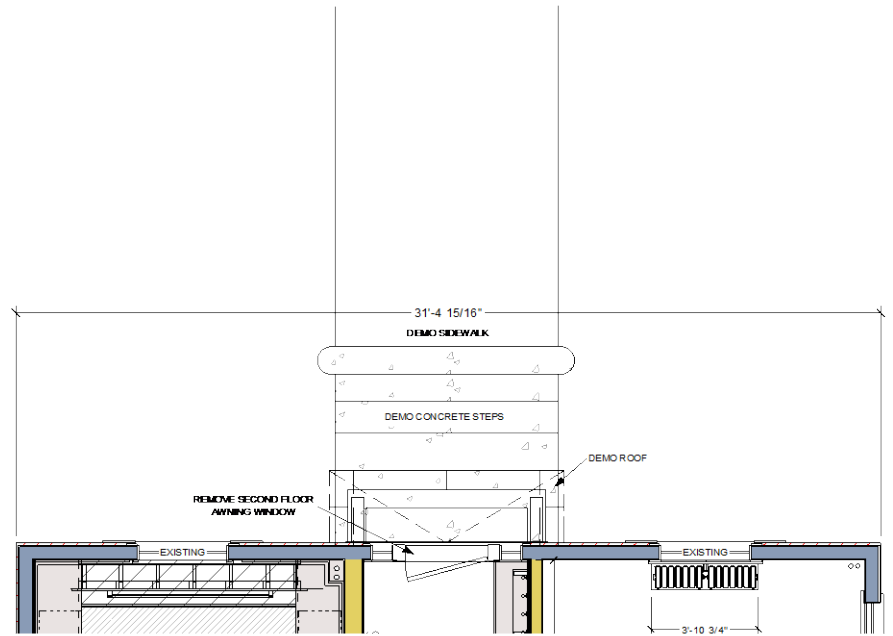
## CLIENT REQUESTS:

- Add panache to the exterior with a statement front entry and new color scheme.
- Address the bay window above the front entry roof which detracts from the exterior.
- Very specific dimensions for the capstones, pedestals, and brick layout

## CHALLENGES:

- Deterioration and rot was found during demo of the existing stoop and it was necessary to replace framing and mortar before building the new front entry
- The foyer interior had recently been remodeled; replacement of some of the elements such as the front door and sidelites were extra challenging due to the millwork and built-ins which had previously been added.

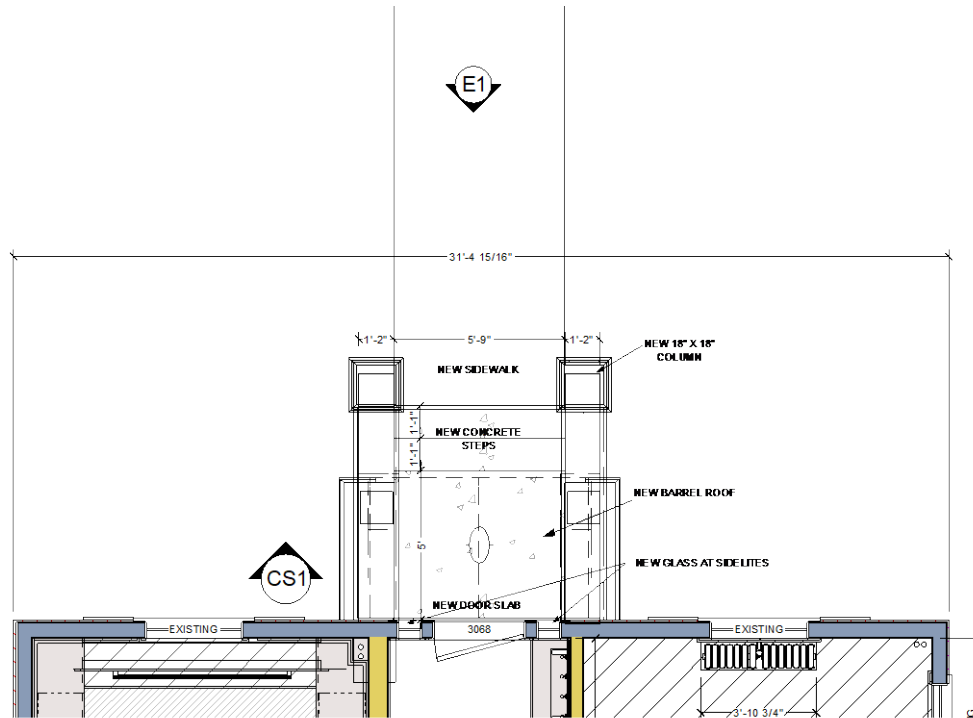
# BEFORE FLOOR PLAN



## **BEFORE PLAN**

SCALE: 1/4" = 1'- 0"

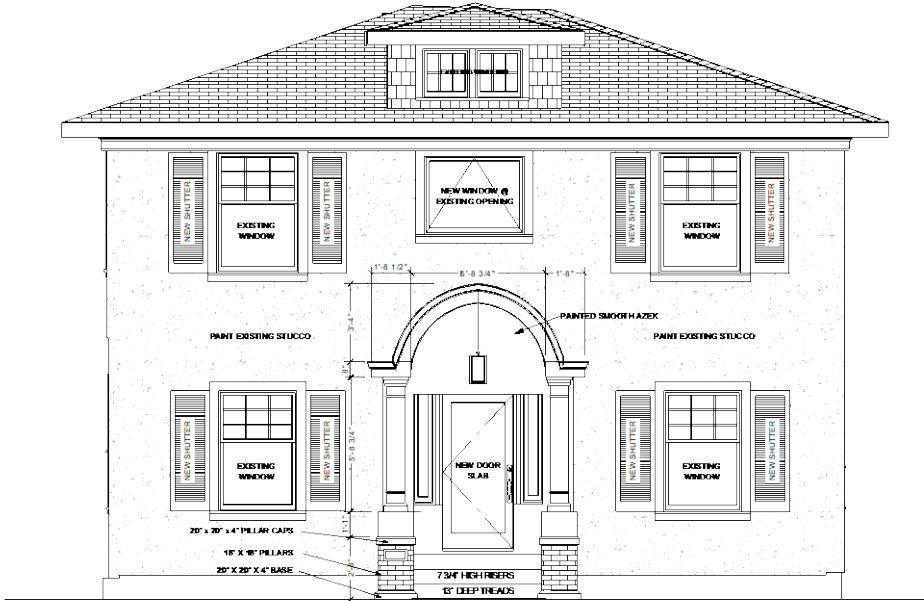
# AFTER FLOOR PLAN



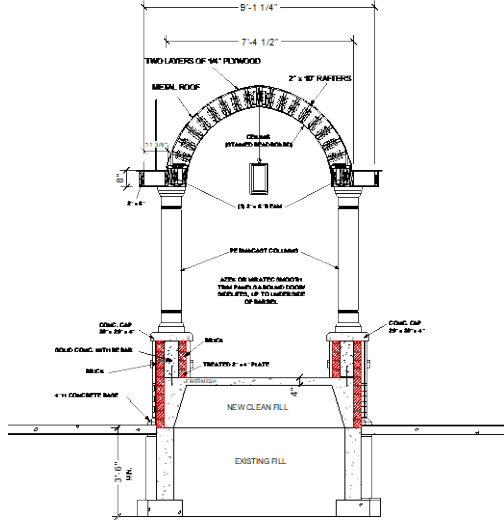
## **AFTER PLAN**

SCALE: 1/4" = 1'- 0"

# ELEVATIONS

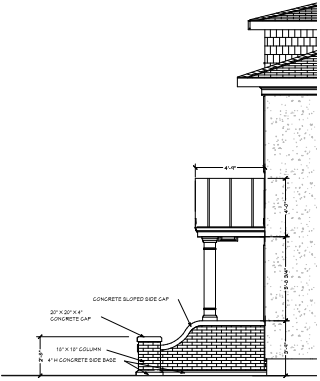


**FRONT ELEVATION (E1)**  
SCALE: 1/4" = 1'-0"



**CROSS SECTION (CS1)**  
SCALE: 1/4" = 1'-0"

**SLOPED WALL DETAIL**  
SCALE: 1/2" = 1'-0"



**SIDE ELEVATION (E2)**  
SCALE: 1/8" = 1'-0"

**SLOPED GAP DETAIL**  
SCALE: 1/2" = 1'-0"



# BEFORE AND AFTER

## SOLUTIONS:

- Very detailed carpentry and masonry layouts were completed before and during construction to ensure the desired final dimensions were achieved. Precise craftsmanship was absolutely necessary for accuracy of the desired shapes and details!
- Elements were chosen to coordinate with and enhance the classical style of the home: Bridgeton brick, Tuscan columns, a barrel-vaulted roof structure with black standing seam metal roofing and stained beadboard ceiling, traditional crown molding and louvered shutters. As many elements as possible were created with low-maintenance products for rot-resistance and longevity.







## BEFORE AND AFTER

### SOLUTION:

A neutral color scheme of mocha, black, and white will stand the test of time, and the gold accents on the door handle and light fixture provide a bright pop. The bricks were hand-selected to minimize color variation and unwanted shades.

2023 COTY Awards - Minneapolis Classical Exterior







SUCCESS!

These homeowners now have an exterior with incredible curb appeal that honors the era of the home and boasts a gorgeous statement entry.

2023 COTY Awards - Minneapolis Classical Exterior