



Harmonious Design

Transforming a trapped kitchen, tired living room, and laundry space into the perfect home for a family of five. This new design will seamlessly blend the living room and kitchen.

Residential Architectural
Design Over 500 square feet

Client Needs and Wishes

A young family yearned for a transformation in their home. Their kitchen, trapped in outdated angles and cramped openings, pined for purpose and storage. Their dream? An open floor plan with modern touches that harmonized their life and their home. With determination, our team worked to develop a remodel where form fuses with function, crafting a new home that echoed with purpose.

The original kitchen was blocked off to the rest of the living space, and our clients wanted to feel like they could socialize with people from one room to the next.

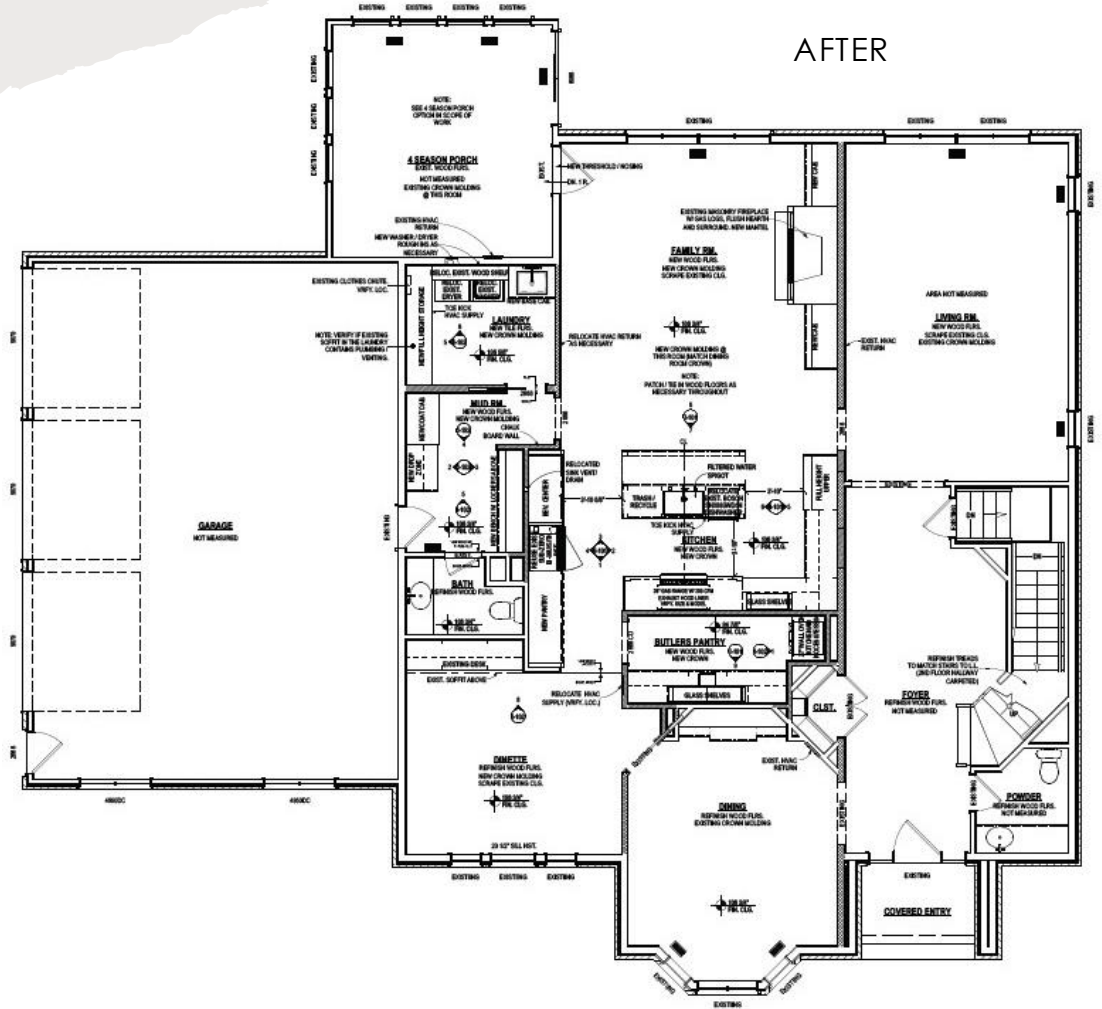
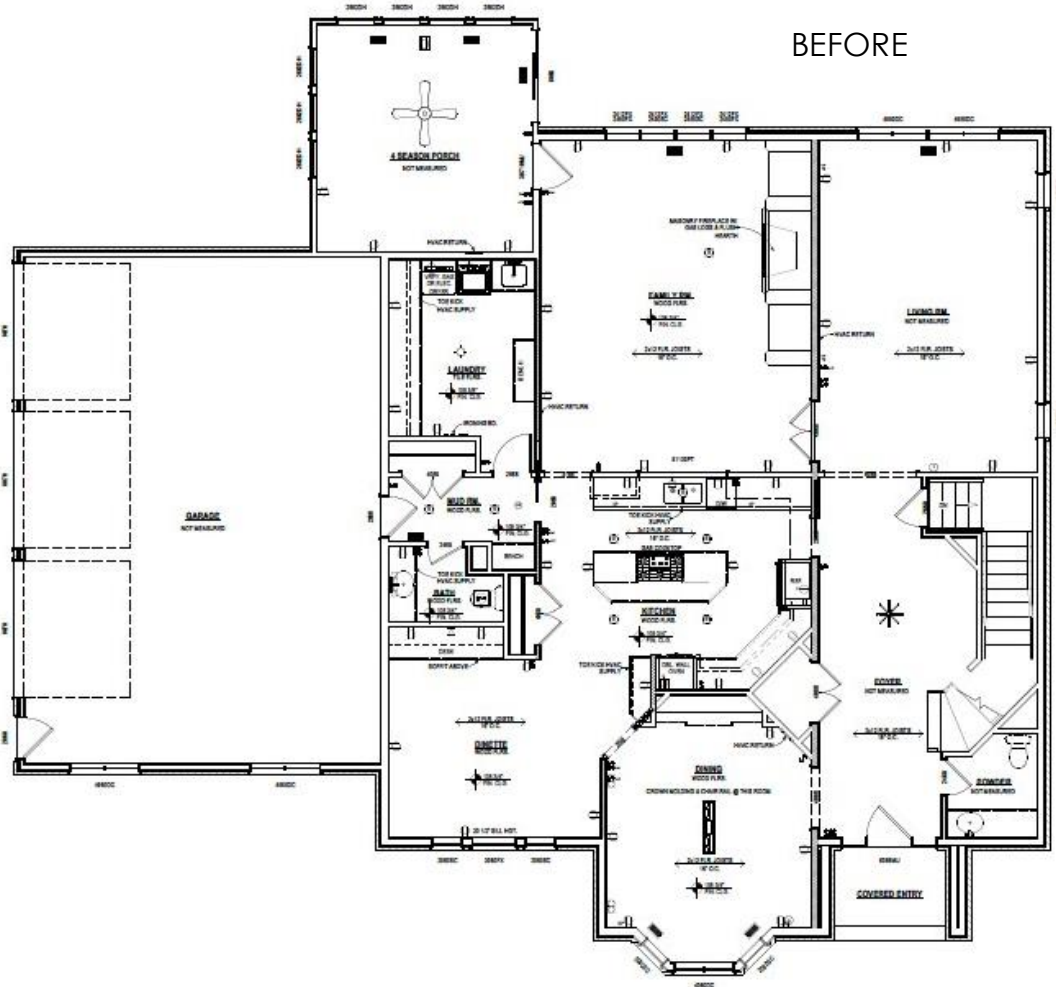
The storage in the kitchen was not being optimized, with dated cabinets and an awkward layout that would develop design challenges.

With a busy lifestyle, our clients wanted space to prep for large meals and gatherings. The solution would become a butler's pantry with a functioning oven and sink space.

Dated carpet and cabinetry in the living room made it difficult for this family of five to stay organized.

An awkwardly large laundry room took up too much space for a functional mudroom. With our client's wishes, they wanted a space where they could hang coats, shoes, and bags. It was important to think about the existing laundry and configure a space that made sense for the family and still offer ample storage.

Before and After Plans

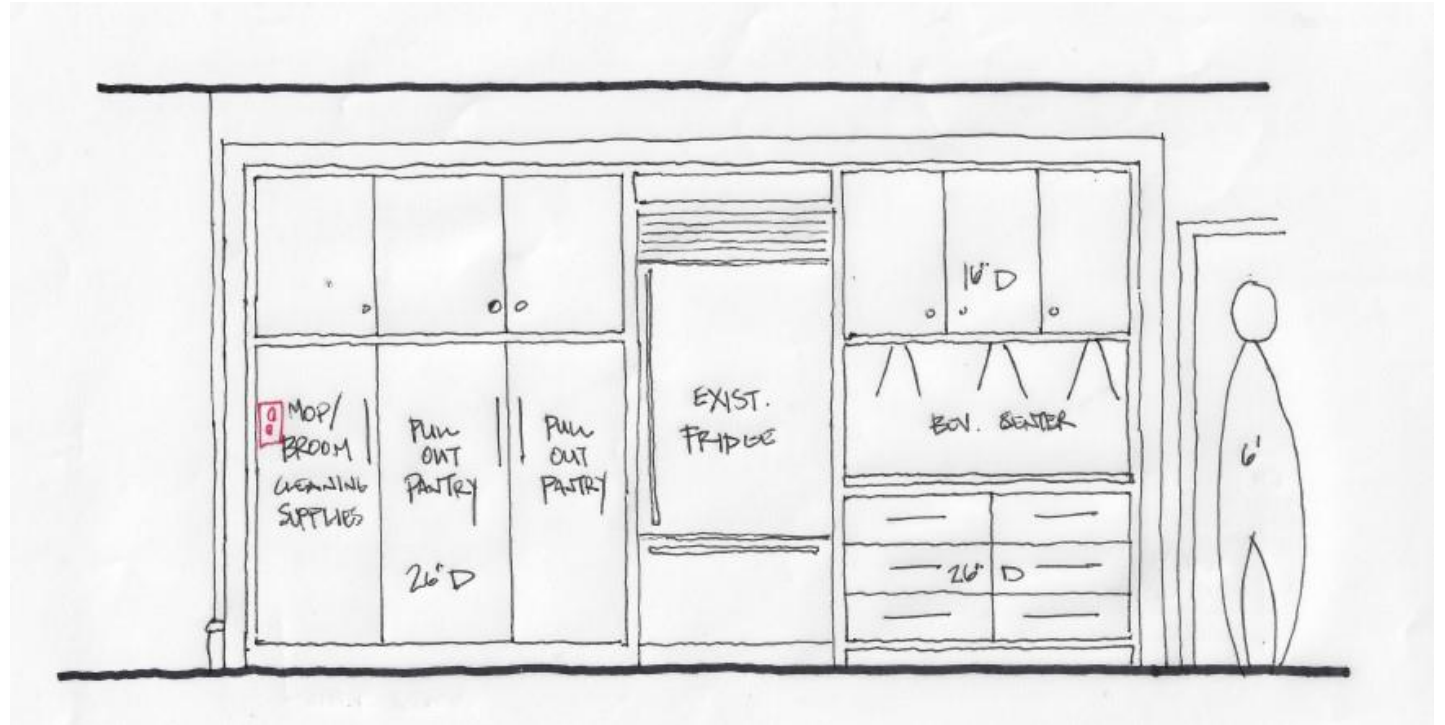


2023 COTY AWARDS -Residential Architectural Design Over 500 sq ft

Time To Go!



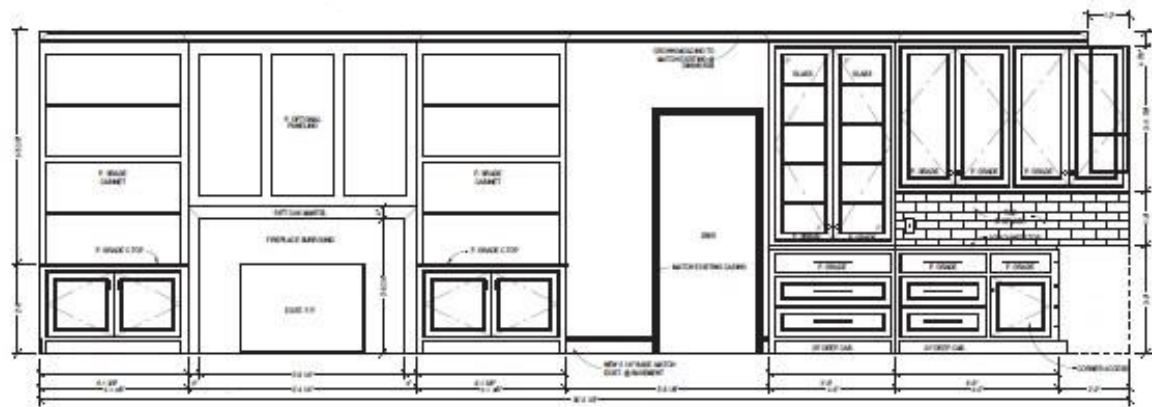
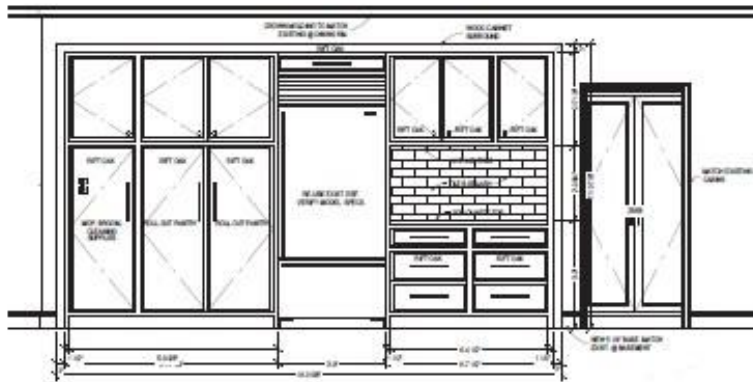
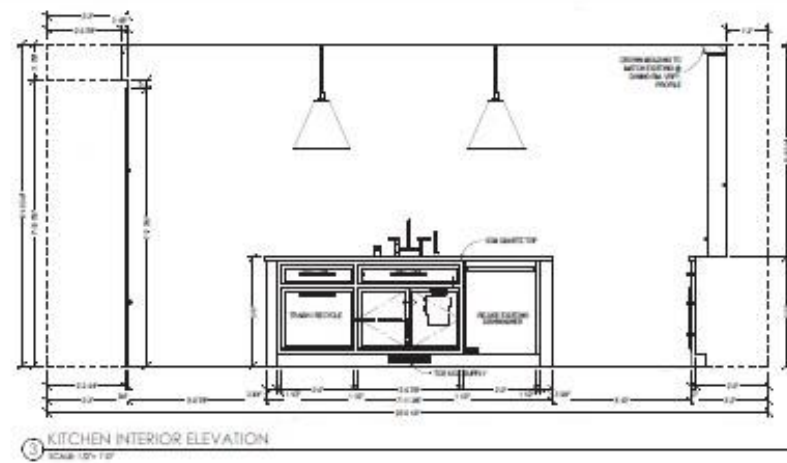
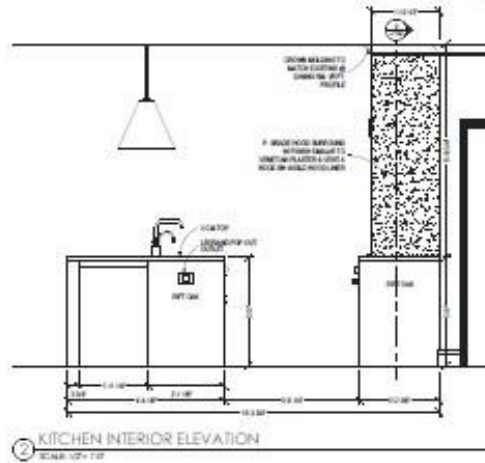
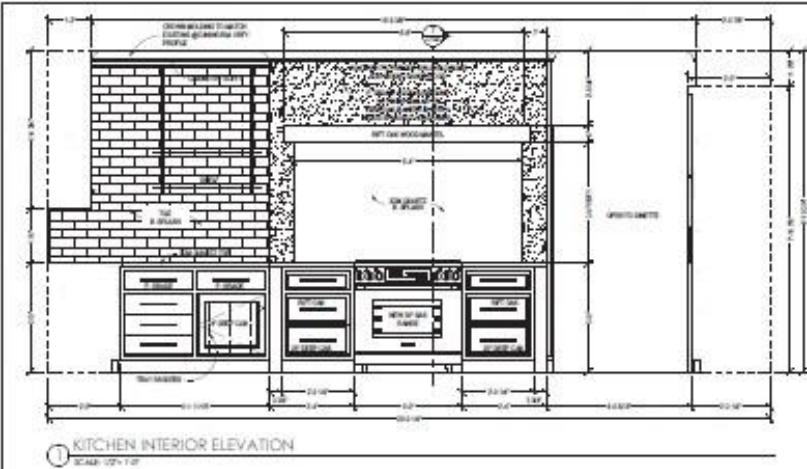
Kitchen Concept Sketches



Before the design phase, our clients shared excitement in the process, and understanding that the new layout would be a place they love. This is where the inspiration for the design began. On the priority list: a coffee station next to the fridge. Our team drew up sketches to figure out what flow would make the most sense for how this family lived.

Another element to consider: With a busy life, our clients wanted to quickly be able to grab cleaning supplies or seasonal kitchenware. The best solution? Hidden cabinets that seamlessly transitioned the spaces within the home.

Kitchen Elevations



A large island that still provides enough space for the family of five to move freely throughout the kitchen is the solution here. Smart cabinetry is designed for an element of open shelving but also create a functional space.

The goal is to create secret storage for excess kitchen appliances and cleaning supplies.

Kitchen Revamp



Our team needed to remove the wall from the kitchen to the living room. The original space only had a pass-through window for communicating with family and friends in the other room. A major design solution would be to produce an open floor plan while offering substantial storage.



Seamless Flow

By removing that wall, the space will feel more functional. You can freely move from one end of the home to the other. When looking into the kitchen, the hood is the statement. The space provides an organic and traditional feeling while adding unique touches that are warm and inviting.

This seamlessly allows the living and cooking areas to be united. Transparent cabinets can house fine dining ware and home recipes while the unique backsplash will complement the neutral tones with a pop of color.

Open Concept

The new kitchen will include durable finishes, a large island for casual dining and prep, display storage, and tailored functionality. A blend of wood and painted cabinets bring warmth to the home with special touches that fit right in.

The open floor plan makes this space feel grander and inviting, allowing the natural light to come through the large windows.

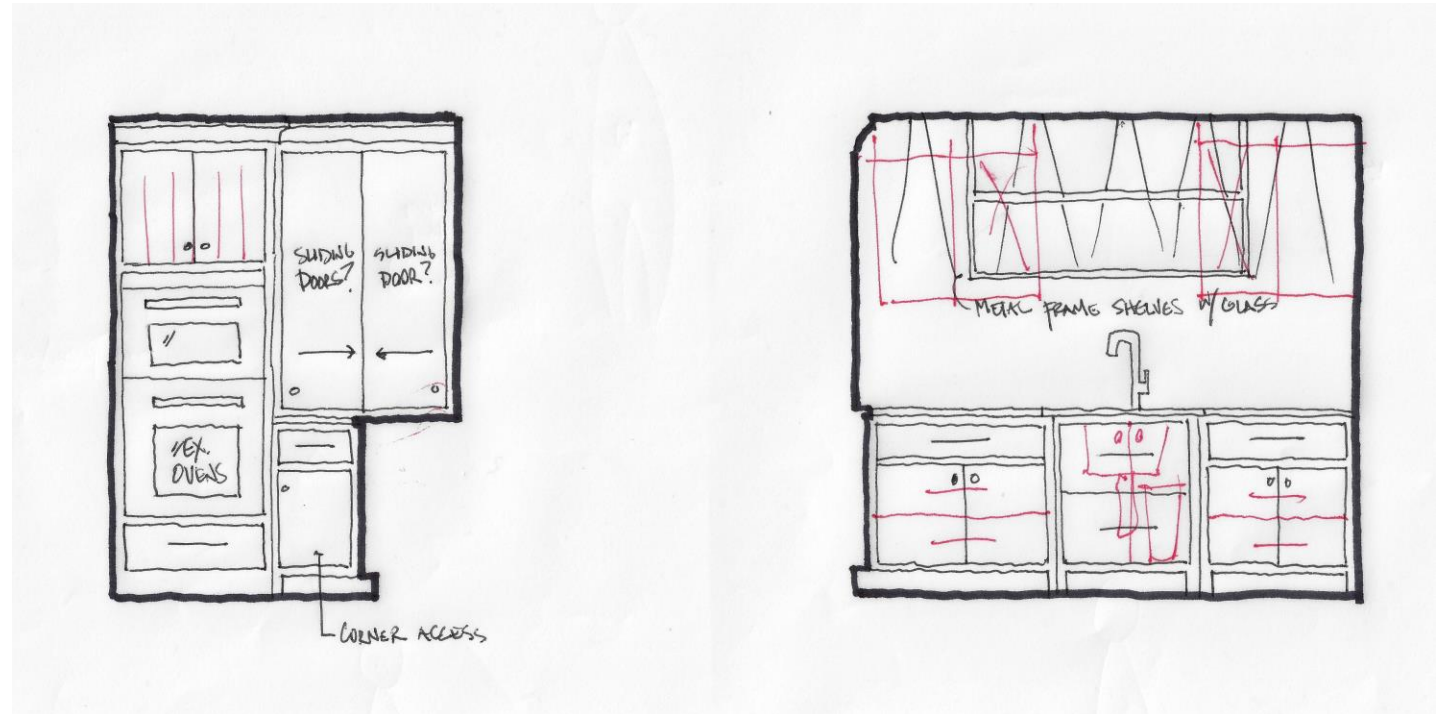




Living Room Revitalization

In the design process, it was important to keep the fireplace as the focal point in this living space. While preserving the original brick was a priority, our clients yearned for balance and elegance. Custom shelves are designed to add storage and highlight cherished photos and personal mementos.

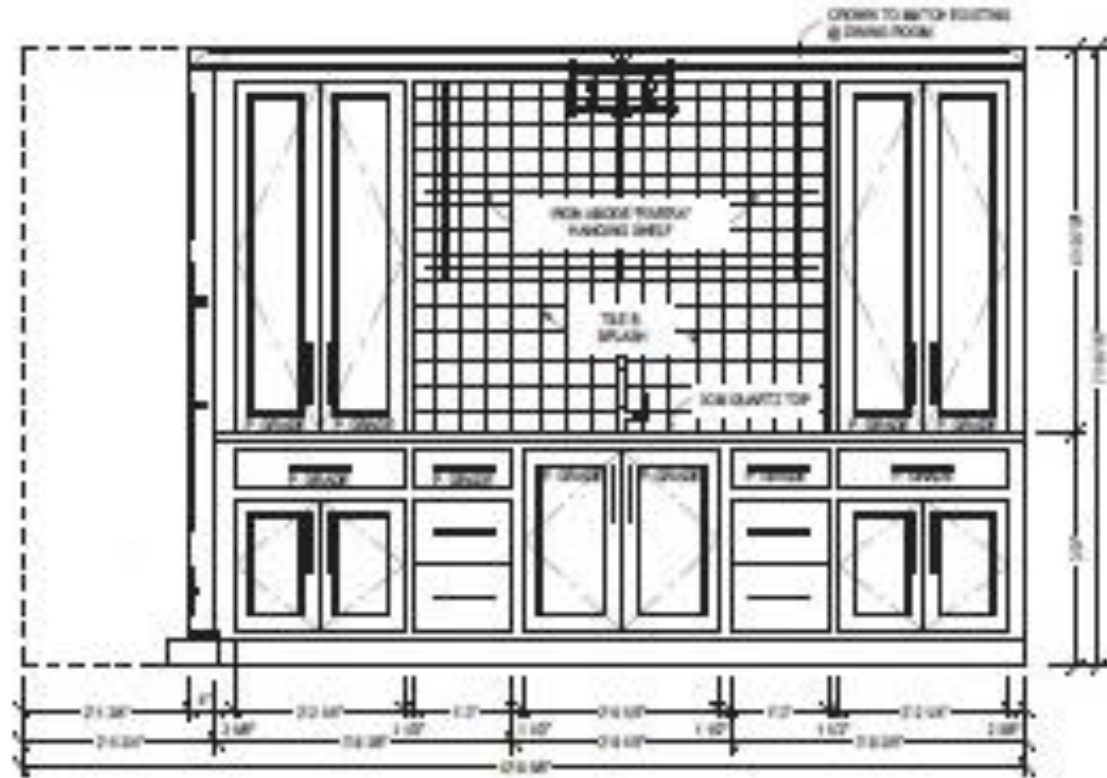
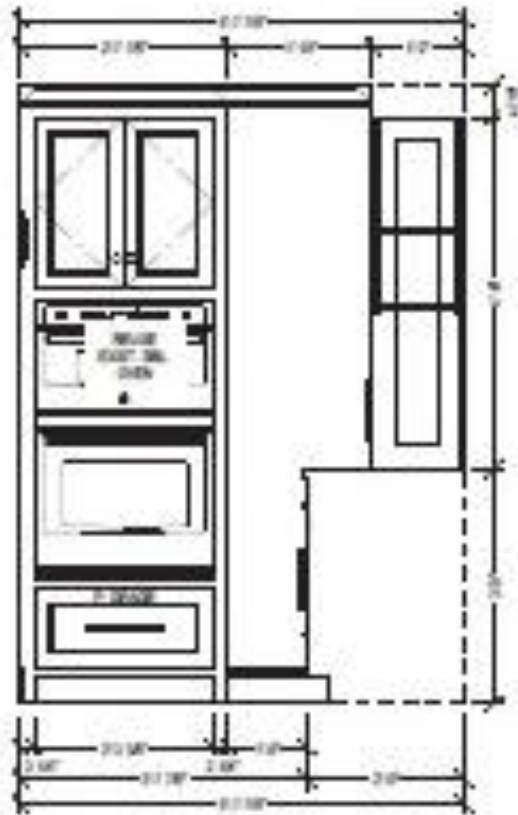
Butler's Pantry Sketches



Per our client's wishes, one of the creative elements that were included in this design process was a space for food prep and entertaining. By reconfiguring the kitchen, our team would be able to make room for a narrow butler's pantry behind the kitchen.

Butler's Pantry Elevations

A conventional oven and microwave will be housed in this butler's pantry for cooking large meals. The custom storage will allow the family to store extra appliances and tableware.



The backsplash will act as a unique design element as well as a durable backdrop for prepping meals.

Butler's Pantry Renderings

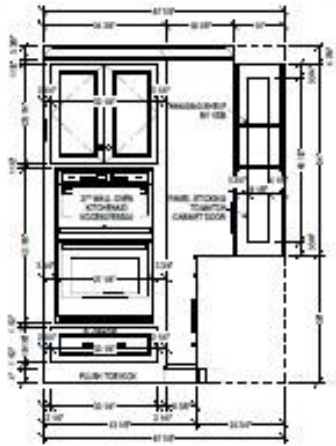


Mudroom Sketches



The thought process for this space is to reconfigure the laundry room so that we can create a mudroom that offers storage lockers and a drop zone when entering through the garage.

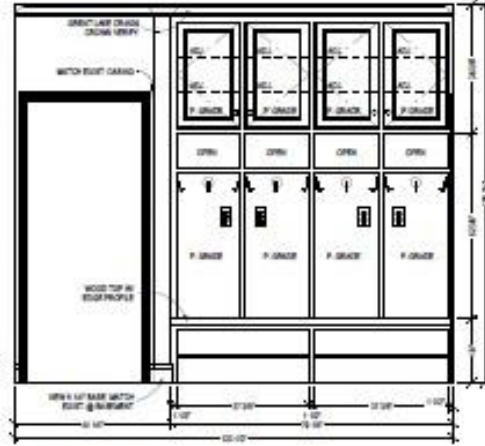
Mudroom Elevations



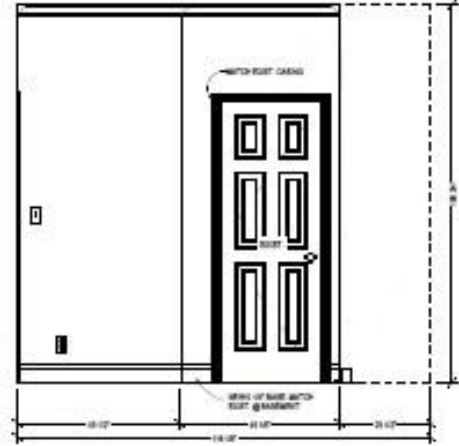
① BUTLERS PANTRY INTERIOR ELEVATION
SCALE: 1/2" = 1'-0"



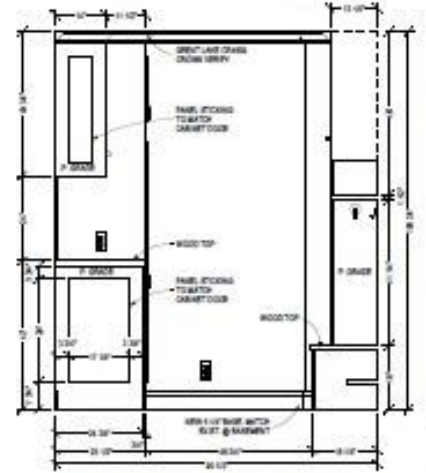
② MUD ROOM INTERIOR ELEVATION
SCALE: 1/2" = 1'-0"



③ MUD ROOM INTERIOR ELEVATION
SCALE: 1/2" = 1'-0"



④ MUD ROOM INTERIOR ELEVATION
SCALE: 1/2" = 1'-0"



⑤ MUD ROOM INTERIOR ELEVATION
SCALE: 1/2" = 1'-0"

A drop zone and storage lockers for the adults are housed on this side of the mudroom. Smart storage is designed for extra space.

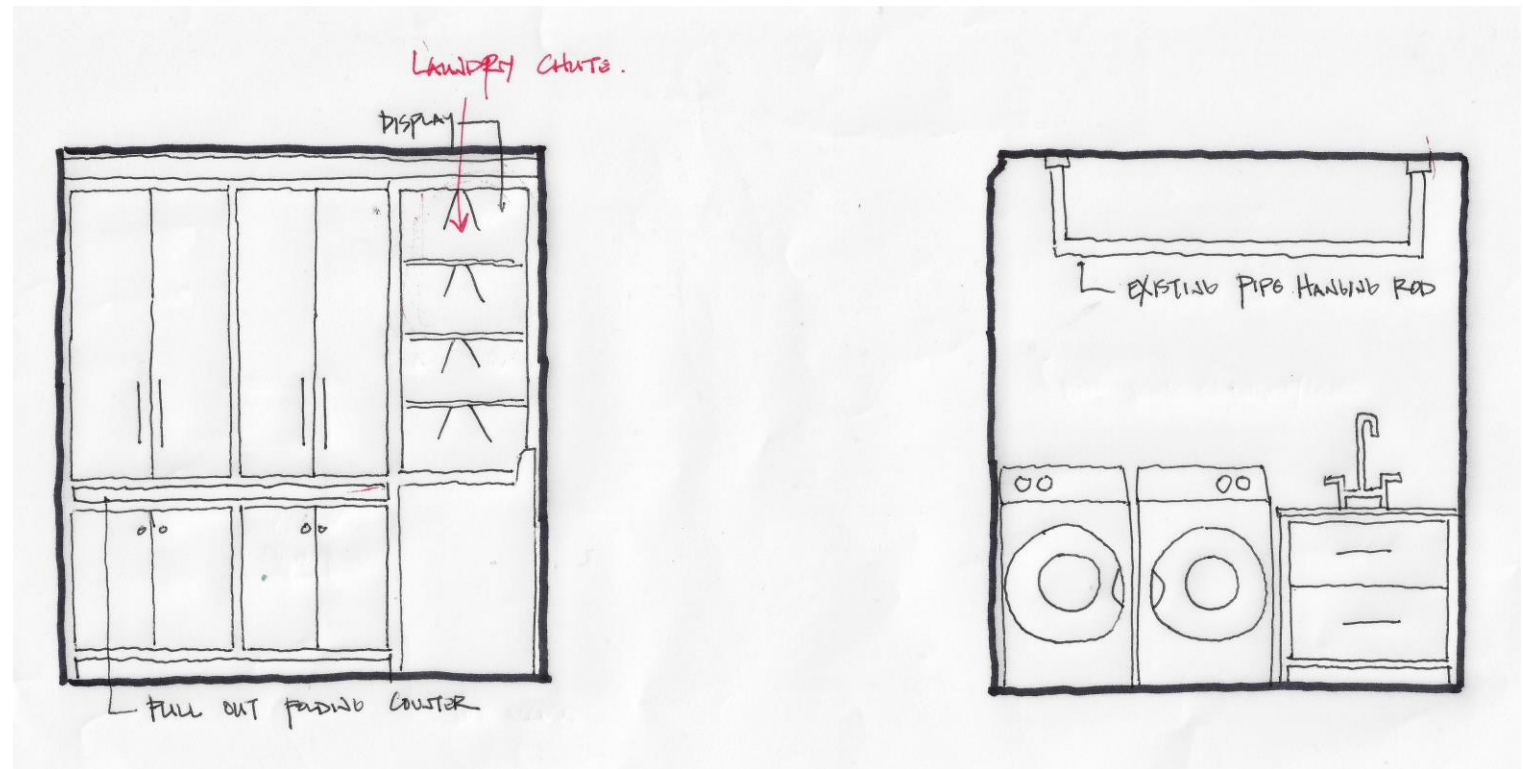
Kids lockers will be created with cubbies to hold hats and lunch boxes. Custom shoe shelves sit underneath the bench for added storage.

Marvelous Mudroom

Designing this mudroom will create a sense of flow from the garage to the kitchen. The details in the mudroom are replicated from other areas of the home. All storage is designed so that the family can utilize their space efficiently.

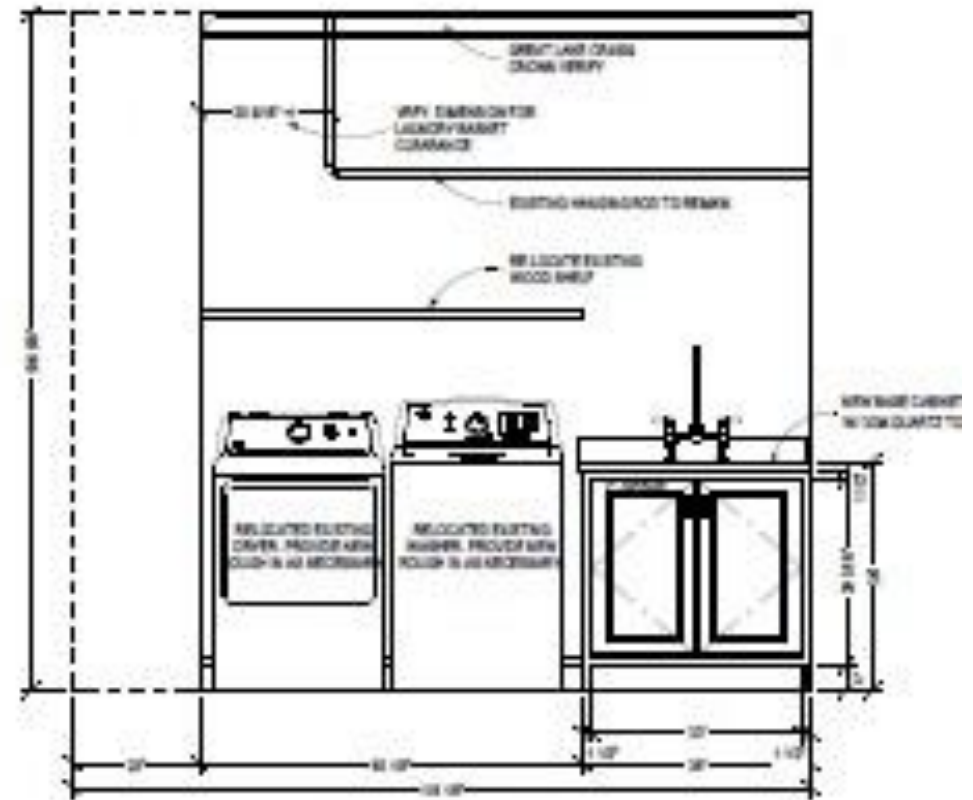
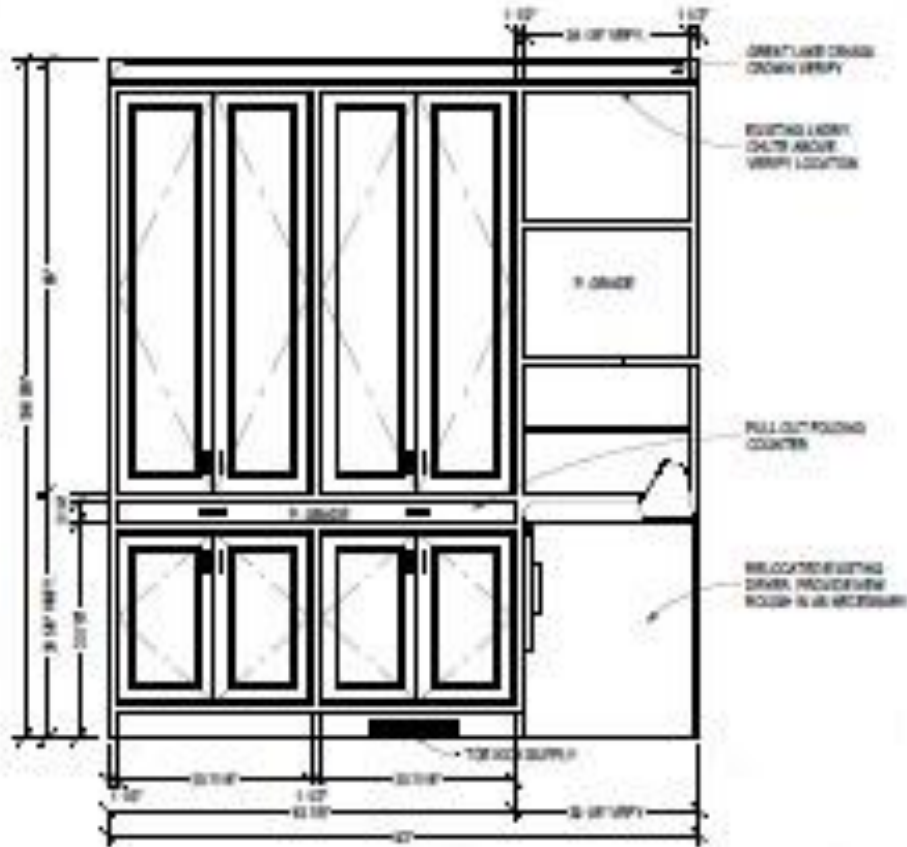


Laundry Room Sketches



By downsizing the existing laundry room and designing a mudroom, we would have to get creative with this new space.

Laundry Room Elevations



Washroom Magic

The laundry room is one of the workhorses of the home. The solution to downsizing this space, was built-in custom shelving along the wall to provide storage space for cleaning supplies and towels. A long drying rack will hang above the washer and dryer for the best use of space. A sink will sit to the right of the appliances for cleaning. Bigger does not always mean better- this new design fits the space perfectly.

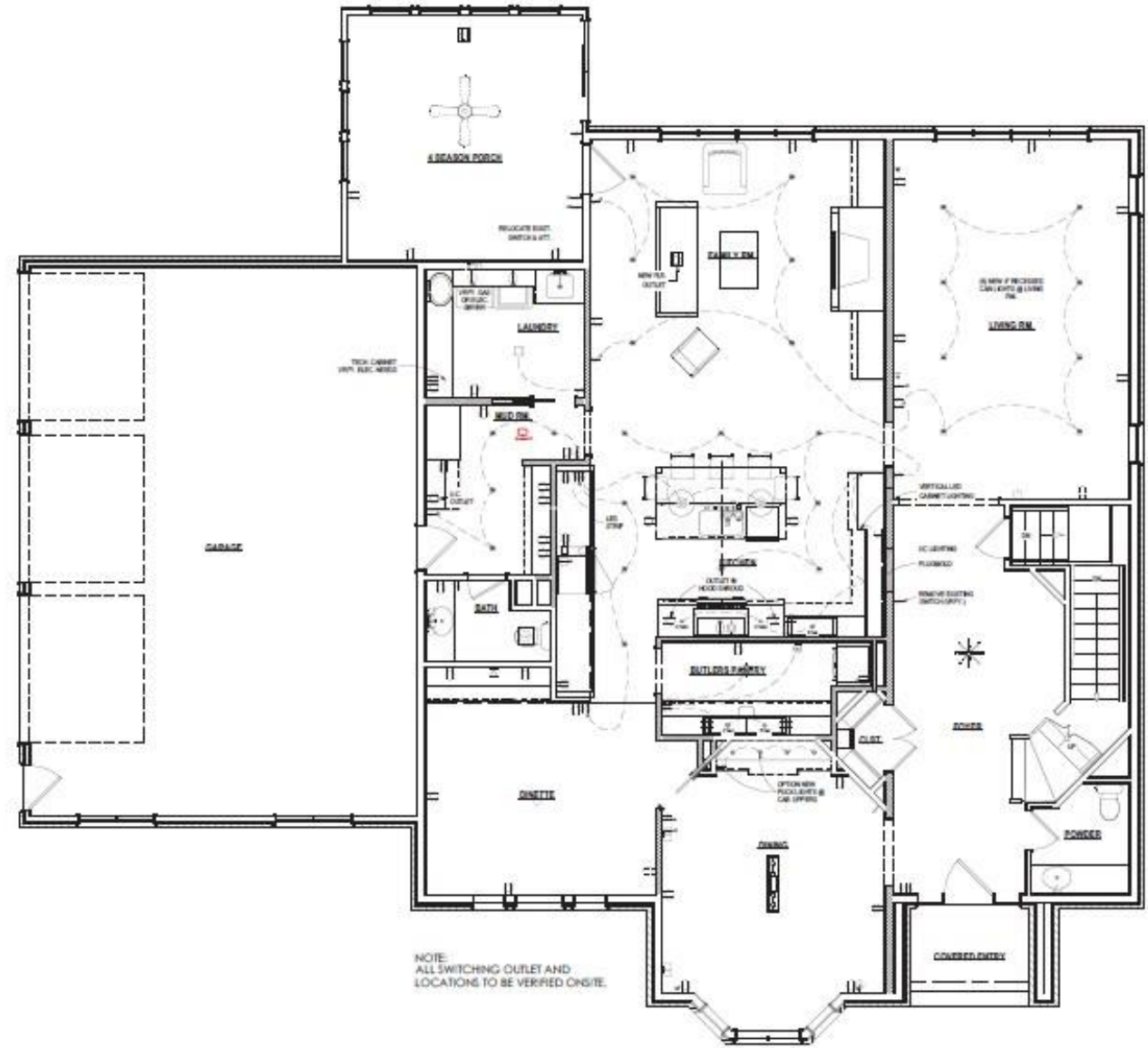


Demo Plan

To execute this new design, our team will remove the large wall between the kitchen and living room. Instead of leaving the rest of the footprint to small, narrow hallways, we are removing the walls in the existing laundry room to shrink that space and expand the mudroom. This will create a better flow to and from the garage to the kitchen.



Electrical Plan





2023 COTY AWARDS -Residential Architectural Design Over 500 sq ft