



KITCHEN

\$150,000 to \$200,000



Client Needs | BEFORE

This 1920 Shorewood home had been in the family for decades. Its hidden lakeside location, situated down a winding path, was part of its unique history and charm. The owners had raised their family in the home and lovingly maintained it over the years. The existing kitchen was part of a previous addition. As the house approached 100 years old, the kitchen was once again ready for an update.

The kitchen layout was lacking. The island was too small, and our clients that didn't like that, when sitting at it, it faced inside rather than outside. They wanted the ability to seat at least five people at counter level. The kitchen was also missing the specific functional storage that they desired. One of the owners wanted to conceal as many small appliances as possible, and the other wanted easy access to them. Aesthetically, they felt that the cabinetry and other surfaces were uninspired and did not reflect their taste or the style of the rest of the home.



Before & After | KITCHEN



BEFORE



AFTER

Before & After | KITCHEN



BEFORE



AFTER





Aesthetics

When planning the remodel and making selections, our clients wanted the kitchen to look fresh, modern and elegant, while maintaining the classic feel and traditional elements that tied it to the rest of the century-old home.

They wanted to keep the look pure and white, but still give the space dimension and depth. Layers of texture in the form of beadboard walls, glossy herringbone tile and a V-groove paneled ceiling provide points of interest against the white backdrop.

Specialty lighting within glass cabinets, above- and below-cabinets, window sconces and recessed lighting frame the space. When dark winter evenings are visible through the windows, it is still a cozy, well-lit room.



Craftsmanship

Throughout the remodel, retaining and restoring as much of the original character as possible was a priority. The detailed doors separating the kitchen from the other living areas were a key architectural element. They were refinished a bright white to match the rest of the cabinets.

We added cabinets up and over the doorway to add storage, display and interest and emphasize the height of the vaulted ceiling.



Innovation | ISLAND

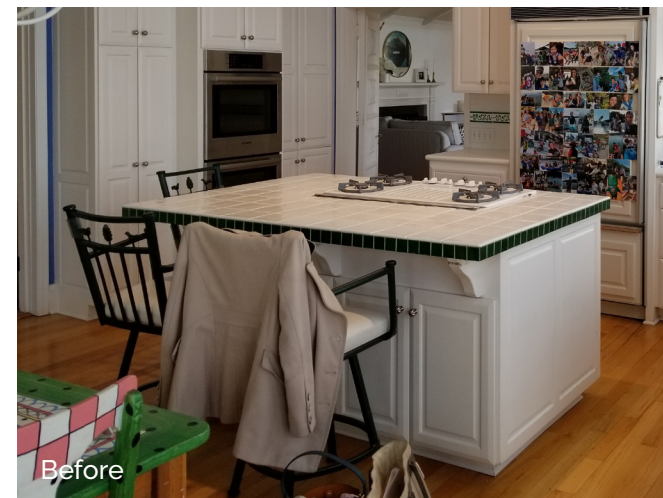
The previous island was too small. Our clients didn't like the island's size or the fact that, when sitting at it, you would face the refrigerator instead of the beautiful outside view.

The new island is twice as large and comfortably seats at least five people, all with an unobstructed view of the lake. It is a multi-purpose piece that is filled with custom storage and organization solutions on every side, from the pull-up mixer stand to a spice cabinet and garbage, recycling and composting bins.

The bar stools are completely wipe off for grandchildren and coming in from the garden or lake. "It's such a great space for a crowd or the two of us," said the owner. "It suits our needs perfectly and brings me joy every day!"



After



Before

Before & After | KITCHEN



BEFORE



AFTER

Before & After | KITCHEN



BEFORE



AFTER



Functionality | BREAKFAST NOOK

Our client wanted to create a “happy place” near the windows to have breakfast and read the newspaper each morning. “I make coffee and sit at the little table under the lights early every morning,” she said. “It just starts my day. It’s perfect!”

To please both owners regarding appliance storage, we incorporated a lift-up toaster/coffee area that is now used daily.

The owner thought her husband may still leave the appliances out on the counter, but he doesn’t! “For me the pull up/put away coffee and toaster are an every day highlight!” she said. “And the workmanship is superb.”



Functionality | ORGANIZATION



Organization

(Clockwise from upper left)

- Pull-out cutting board
- Pantry with pull-out shelves, trays and custom storage
- Pull-out trash and recycling bins
- Kitchen utensil drawer organizer
- Built-in pull-up mixer stand
- Kitchen tool and cutlery drawer



Aesthetics



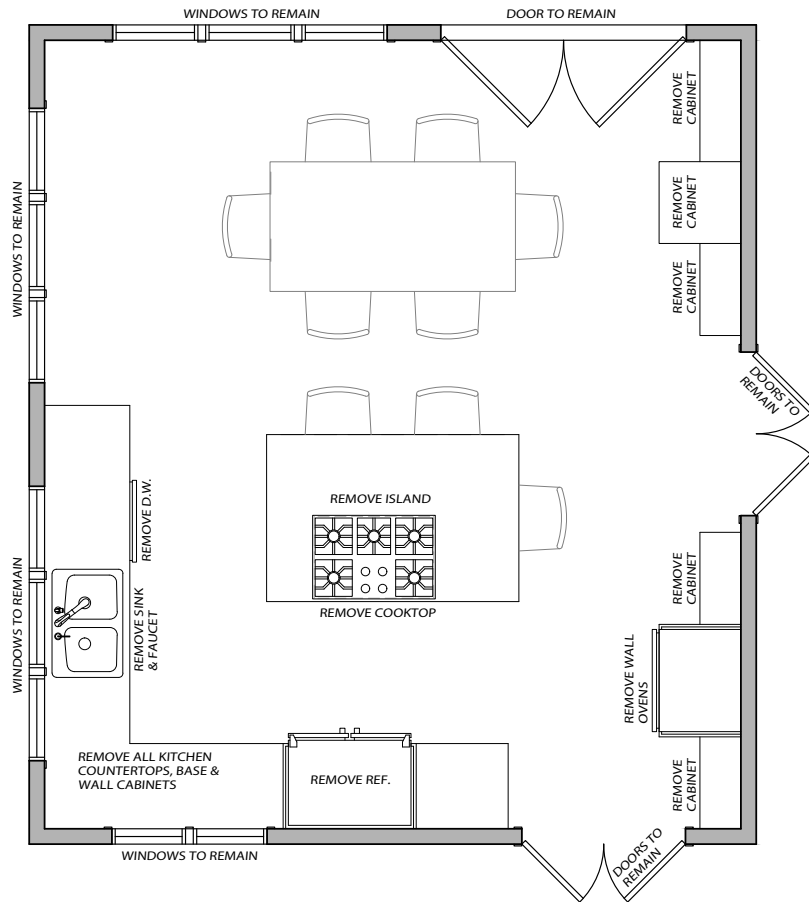
Aesthetics

(Clockwise from far left)

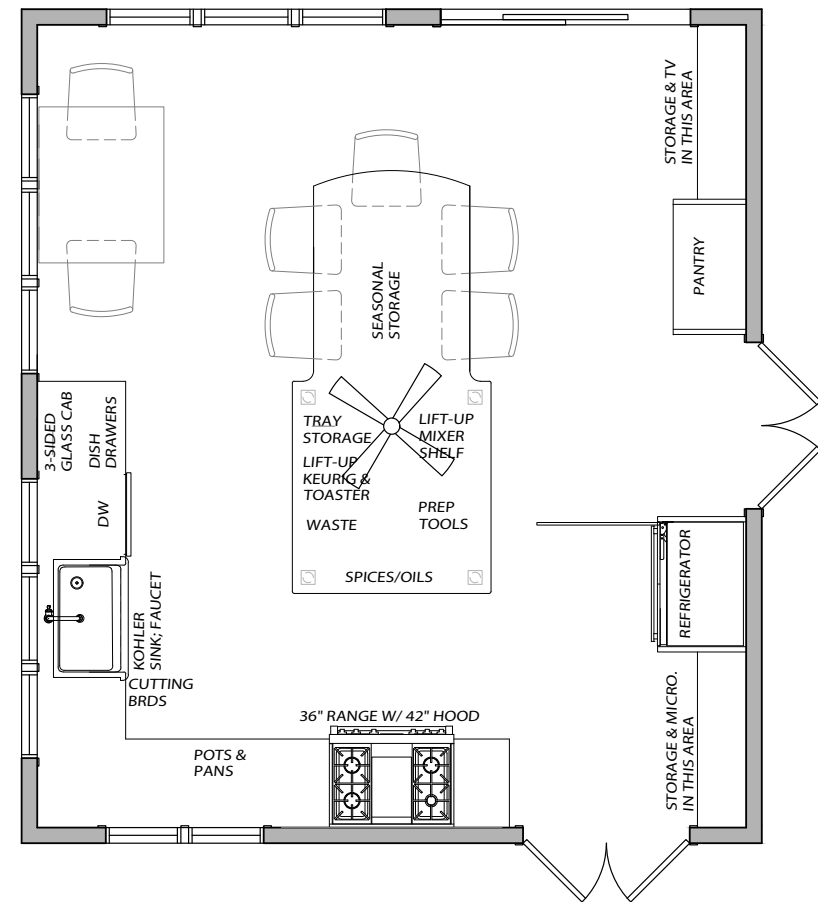
- A three-sided glass cabinet keeps the room feeling light and airy. It provides essential storage while not interrupting the view.
- Arched window detail is a consistent element.
- Lighted cabinets above the doorway for storage and display.
- V-groove paneled vaulted ceiling.

“I can’t tell how much we LOVE our kitchen!” said the owner. “What I love most is that you listened and delivered that vision. The workmanship is just spectacular!”

Floor Plans | BEFORE & AFTER

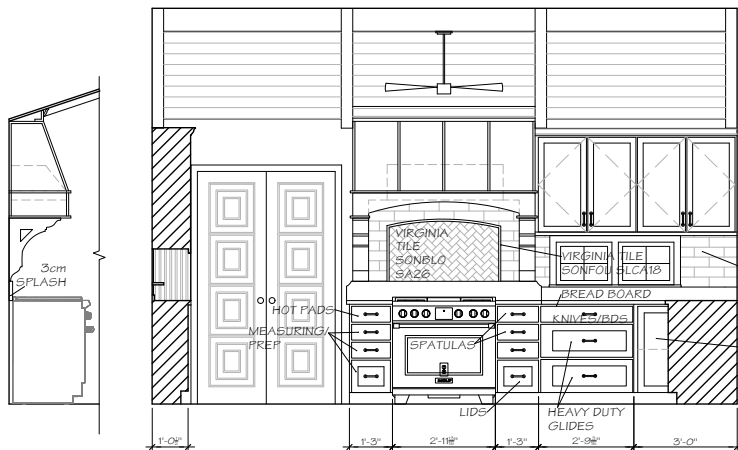


BEFORE

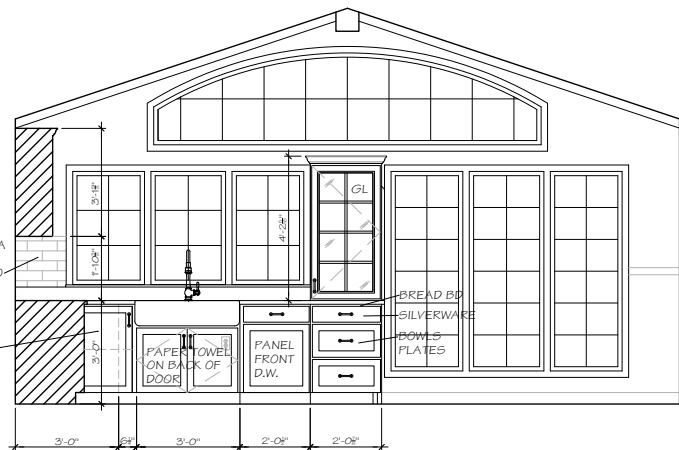


AFTER

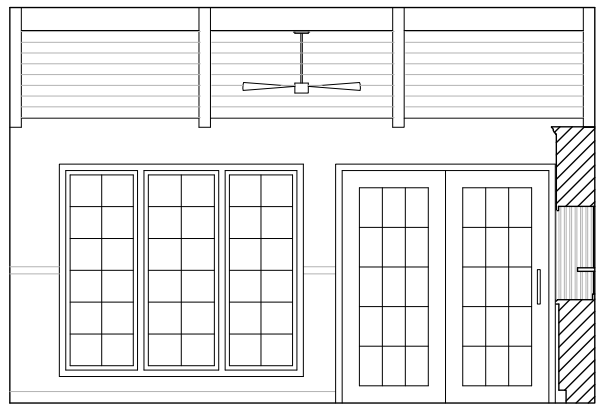
Elevations



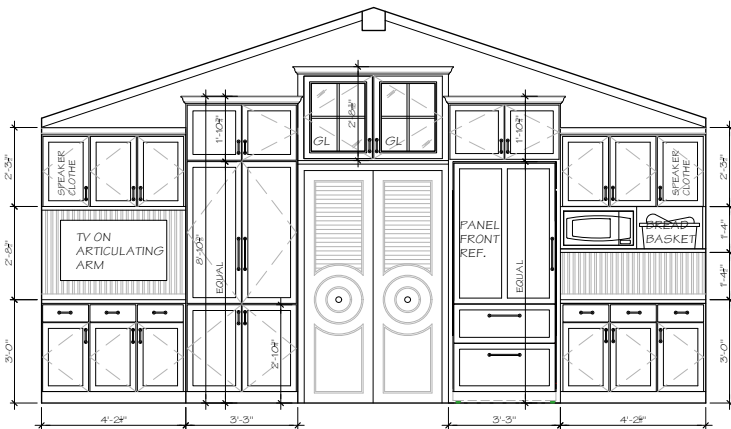
1 KITCHEN ELEVATION
SCALE: 1/2"=1'-0"



2 KITCHEN ELEVATION
SCALE: 1/2"=1'-0"



3 KITCHEN ELEVATION
SCALE: 1/2"=1'-0"



4 KITCHEN ELEVATION
SCALE: 1/2"=1'-0"

Before, During & After | RANGE



BEFORE



DURING



AFTER

Remodeling Process





2023 NARI Minnesota CotY Awards | Kitchen \$150,000 to \$200,000