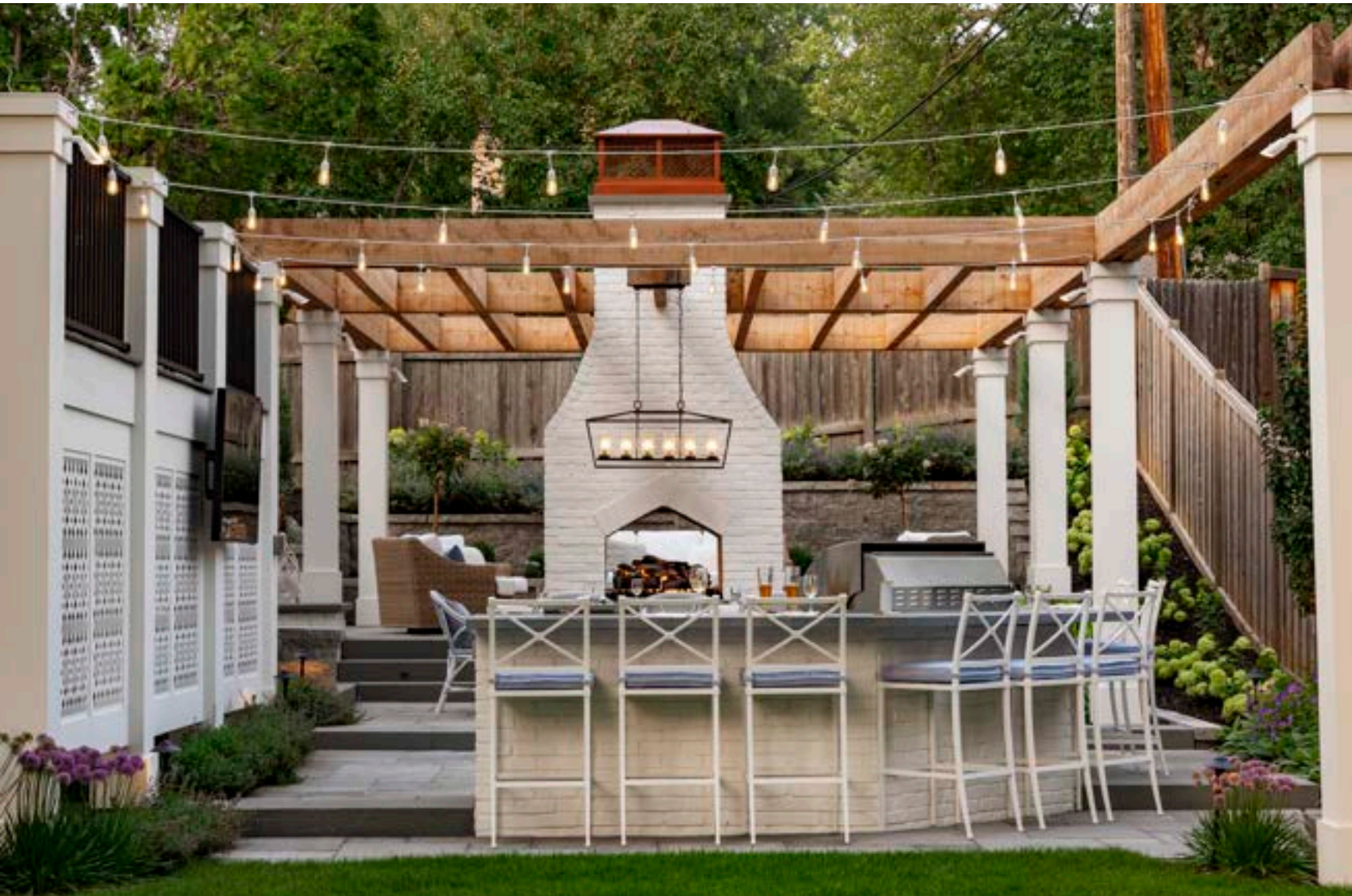


Dreamy Santorini

NARI Minnesota
2023 COTY AWARDS

Residential Landscape Design and Outdoor Living Over 250K



About...

This project was designed for a young couple with three young children who recently moved into a newly built house. While the house met their needs for interior spaces, the yard was not touched by the builder.

The family wanted to clean up their sloped and shady back yard with decaying trees to create a functional space that would host family and friends with children for a variety of events from Friday night BBQs to birthday parties to game day cookouts and beyond.

Plans



Renderings

Before

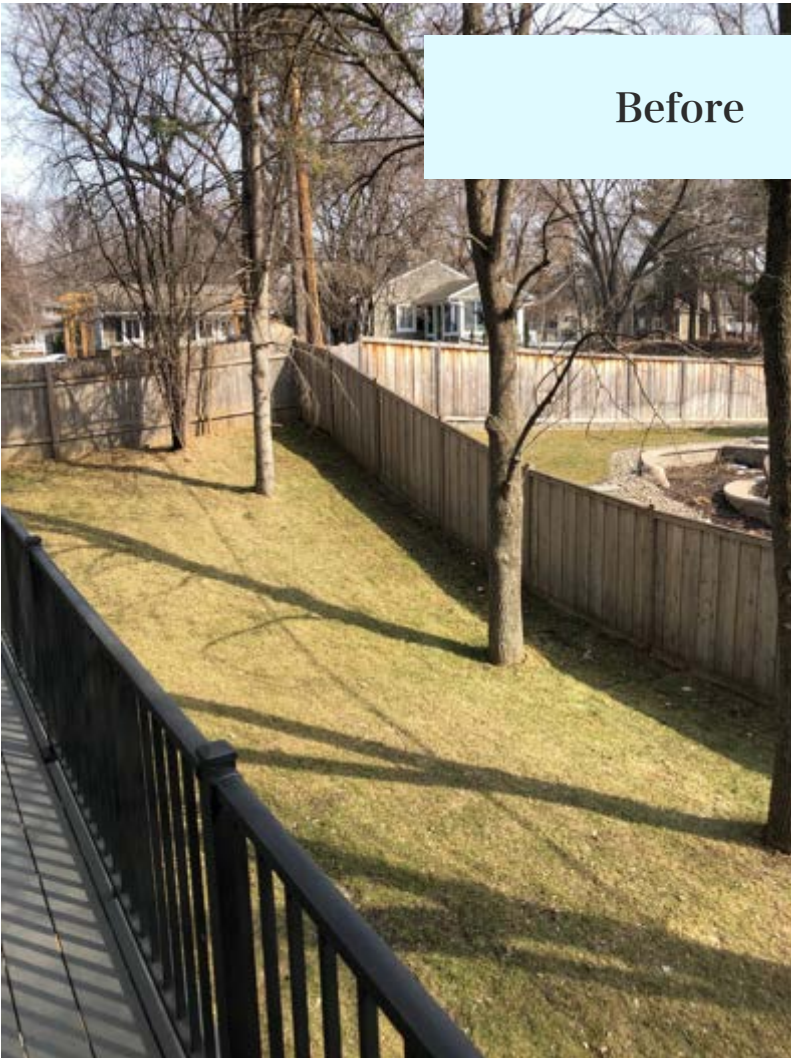


During

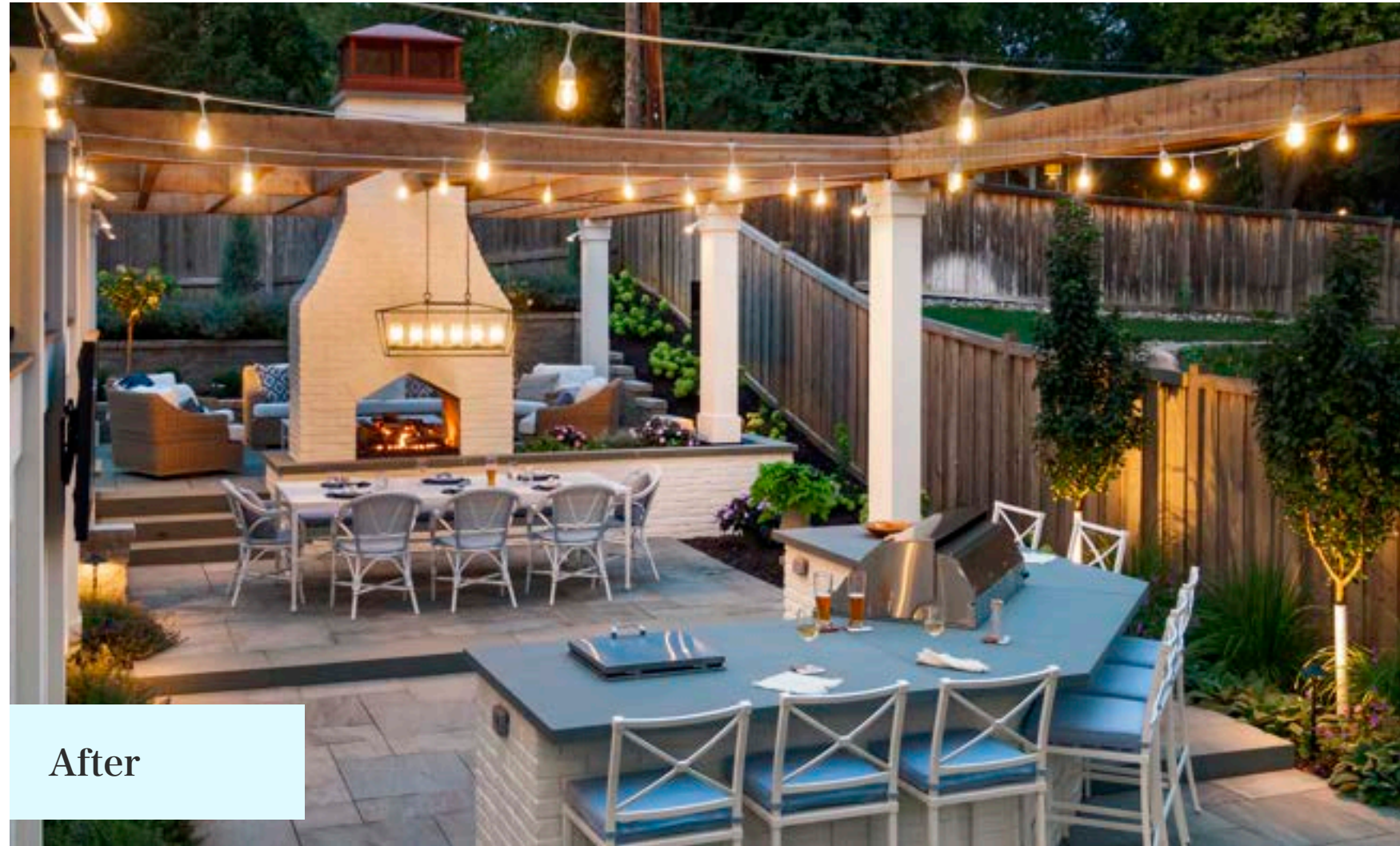


After





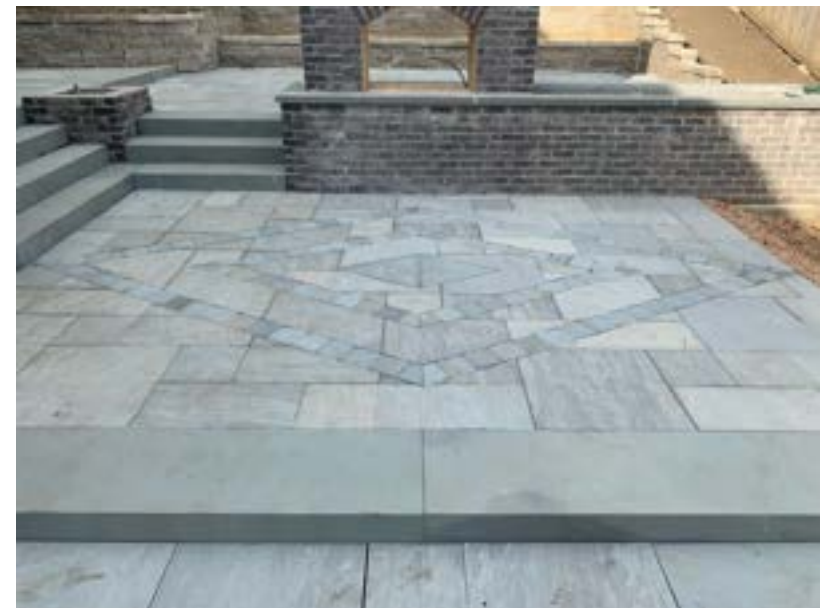
Before



After

Craftsmanship

- Diamond patterns of 6" tumbled bluestone border cut into sandstone patio mimic firebox shape of fireplace
- Series of bluestone steps precisely placed between masonry elements to make the different tier heights work
- Custom chimney shroud compliments diamond patterns of patio inlay, firebox shape, and chandelier over dining table



Aesthetics

- Reminiscent of homeowners' honeymoon to Santorini, the design features a pallet of white with blue accents and strong vertical architectural statements
- Monochromatic plant pallet with greens, whites, purples
- Geometric accents to incorporate the Mediterranean architectural styles
- White painted brick for fireplace and kitchen create clean simple finish on masonry with solid bluestone countertops and caps as blue accent

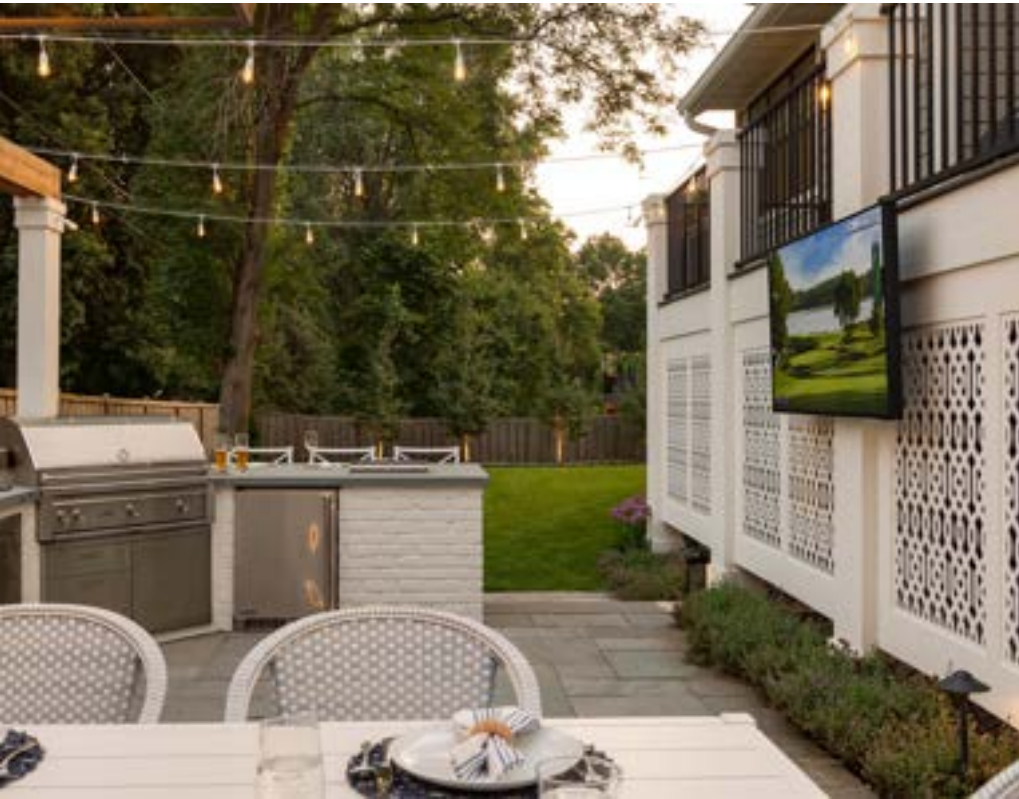


Innovation

- Gravel "bocce ball court" is an oversized French drain, filled with clear material. As the lost spot in the yard this is the water-catchment system but on the surface acts as an outdoor games area
- Hidden under-patio strip drains run along masonry elements for "invisible" drainage off patios and through drain tile to French drain



Key Features



- Architectural panels hung between deck posts hides underside of deck
- Back corner retaining wall allows for flat play space
- Kitchen has counter-height and bar height seating for kids and adults



- Gas see-through fireplace with connected annual planter
- Timber pergola carries from living room to dining area and arbor at kitchen for cafe lights
- Natural stone retaining wall tiers make best use of space
- Angled "L"-shaped kitchen with bluestone counter tops has 42" infrared grill, trash, and storage units, outdoor fridge, and top-sunken ice well

Functionality



- Series of retaining walls surround the living and dining rooms to step down between all the spaces
- Firebox height at living room is "hearth" height (18"); with tiered walls and steps firebox height at dining room is table height (30") for viewing from a dining table
- Another tier stepping down at the kitchen allows for 36" height countertop for cooking and counter height seating for children. One step down along sides allows for 42" bar height seating for adults
- Retaining wall at back corner allows for flat yard space for play
- See through gas fireplace heats both living and dining areas
- Architectural panels between wrapped columns at deck allow for decorative storage and mounting of outdoor tv
- Column wraps at deck go all the way up to railing height to tie into pergola columns at raised living and dining areas
- Hot tub is partially "hidden" by the retaining wall wrapping around side to house
- Hot tub location is for easiest access from the house (especially in winter months)
- Annual planter built as an extension of fireplace, accessible from living and dining rooms for small kitchen gardening
- Walkway wraps around garage from driveway with quaint access through arbor



Dreamy Santorini

Residential Landscape Design and Outdoor Living Over 250K

