

NARI MINNESOTA – 2023 COTY AWARDS

PROJECT: 1920's Craftsman Bungalow

CATEGORY: Residential Kitchen \$50k - \$100k

The main goal the owners had for this 1920's Craftsman Bungalow was to gain storage and workspace in their 110 SF kitchen without adding to the footprint of the house. While providing square footage, the original breakfast nook made the space a challenge to use efficiently. By DECREASING the size of the kitchen by removing part of the breakfast nook, we were able to achieve the homeowners' goals.



CLIENT REQUESTS:

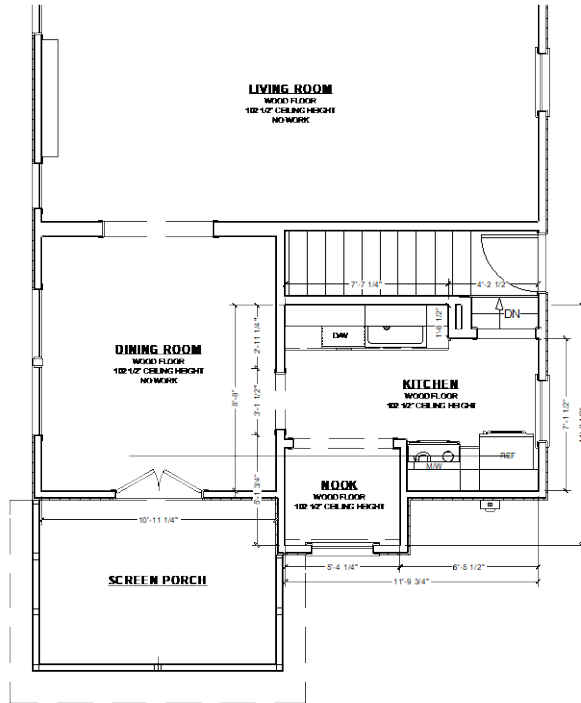
- The main goal the owners had for this 1920's Craftsman Bungalow was to gain storage and workspace in their 110 SF kitchen without adding to the footprint of the house.
- Honoring the original Craftsman aesthetic of the home.

CHALLENGES:

- While providing square footage, the original breakfast nook made the space a challenge to use efficiently.
- Maximizing the utility of the remaining 96 SF after decreasing the size of the kitchen. Strategic appliance placement and cabinet storage planning was key to meeting the needs of this family of four.

BEFORE FLOOR PLAN

**"DOWNSIZED CRAFTSMAN"
ROMA ENTRY 2023
CATEGORY: KITCHEN \$65,000 - \$115,000**



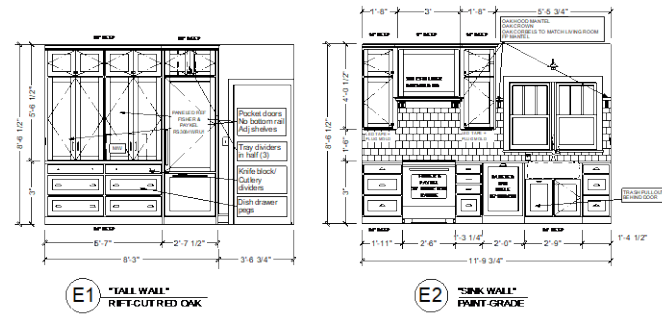
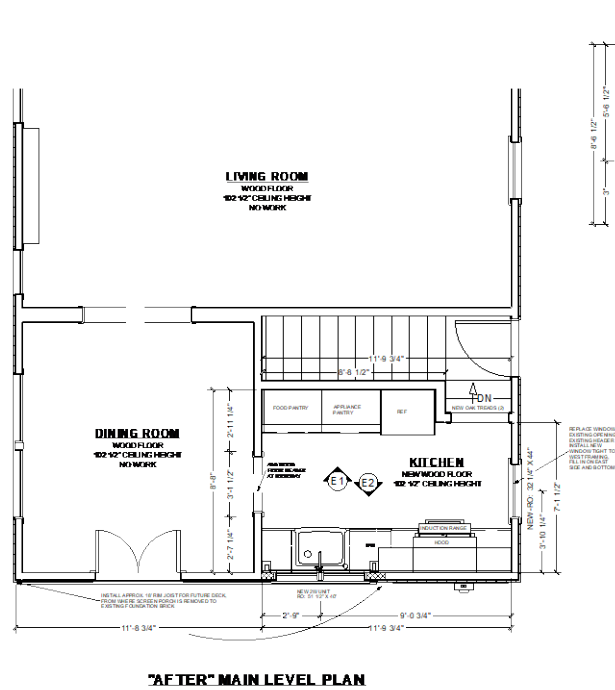
"BEFORE" MAIN LEVEL PLAN



"BEFORE" EAST/REAR ELEVATION

AFTER FLOOR PLAN

**"DOWNSIZED CRAFTSMAN"
ROMA ENTRY 2023
CATEGORY: KITCHEN \$65,000 - \$115,000**





SOLUTIONS:

- By DECREASING the size of the kitchen by removing part of the breakfast nook, we were able to achieve the homeowners' goals.
- The modified exterior wall, under 12'-0" long, presented the opportunity for an uninterrupted run of base cabinets and appliances. The opposite wall of the galley kitchen, less than 9'-0" long, became the hard-working "tall wall" of utility and storage. Discovering an additional 13" of space in an unused chase during demo was a huge bonus!

BEFORE AND AFTER





BEFORE AND AFTER

SOLUTIONS:

- The modified exterior wall, under 12'-0" long, presented the opportunity for an uninterrupted run of base cabinets and appliances.
- The opposite wall of the galley kitchen, less than 9'-0" long, became the hard-working "tall wall" of utility and storage.
- Discovering an additional 13" of space in an unused chase during demo was a huge bonus!





SUCCESS!

Losing almost 15 SF from this kitchen was key to maximizing the efficiency of the space. Collaborating closely with the homeowners on all aspects of the design to determine the best use of the space for their family, and with thoughtful design and selections, this kitchen remodel proves that bigger is NOT always better!

2023 COTY Awards - 1920's Craftsman Bungalow