

# NARI MINNESOTA – 2023 COTY AWARDS

PROJECT: Vibrant Primary Bath

CATEGORY: Residential Bath \$70k - \$100k

These homeowners were in need of creating space for a large primary bathroom that included convenient and enjoyable luxuries. They wanted something bright and fresh that they could enjoy for years to come.



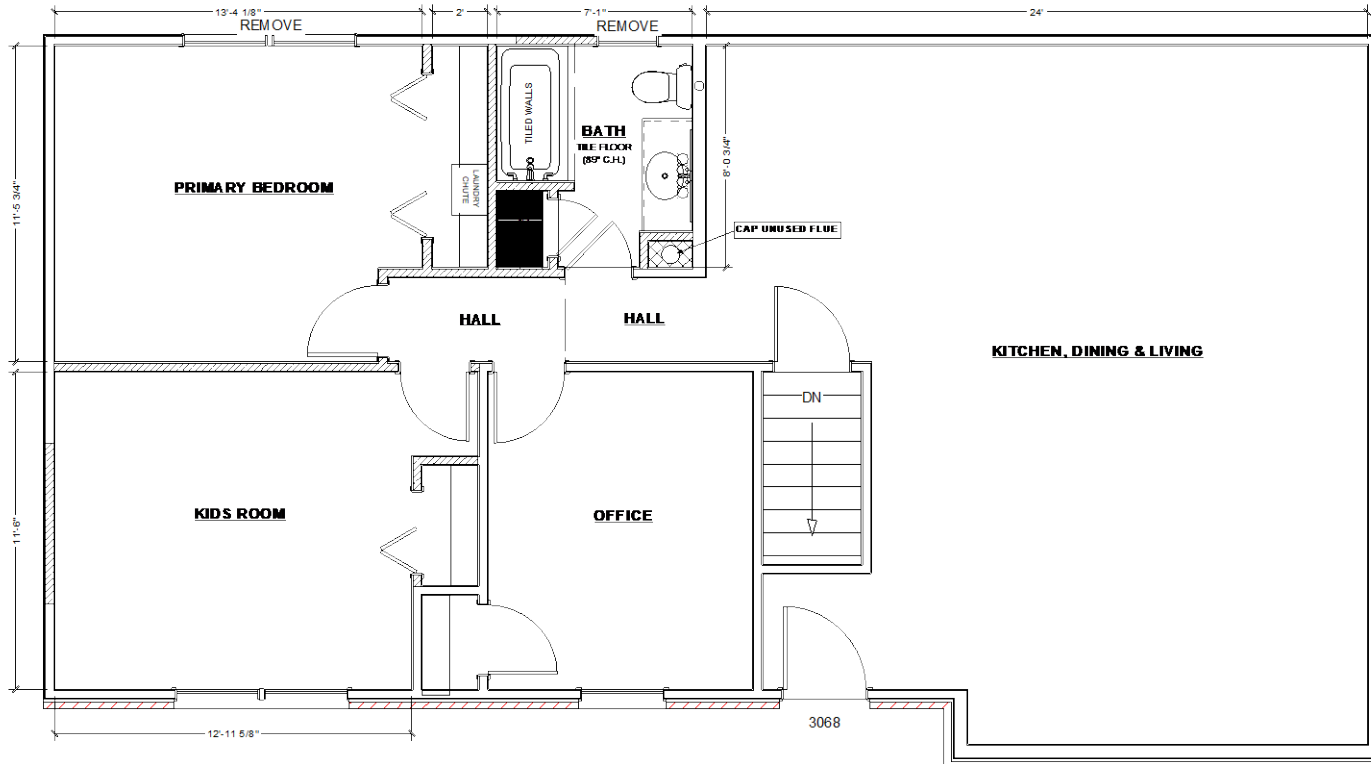
## CLIENT REQUESTS:

- The clients wanted to create a primary bathroom that includes a luxurious shower, open spaces with clean and thoughtful finishes throughout.
- They hoped for direct access to their closet while also maintaining a laundry chute.
- On the wish list also included natural light, creative storage and heated floors.

## CHALLENGES:

- By far and away, the biggest challenge for this primary bathroom is available space.
- In creating a separate bathroom for the owners, a new bathroom to serve the main level would also be needed.
- Limited space would also challenge the need to replace the public bathroom.

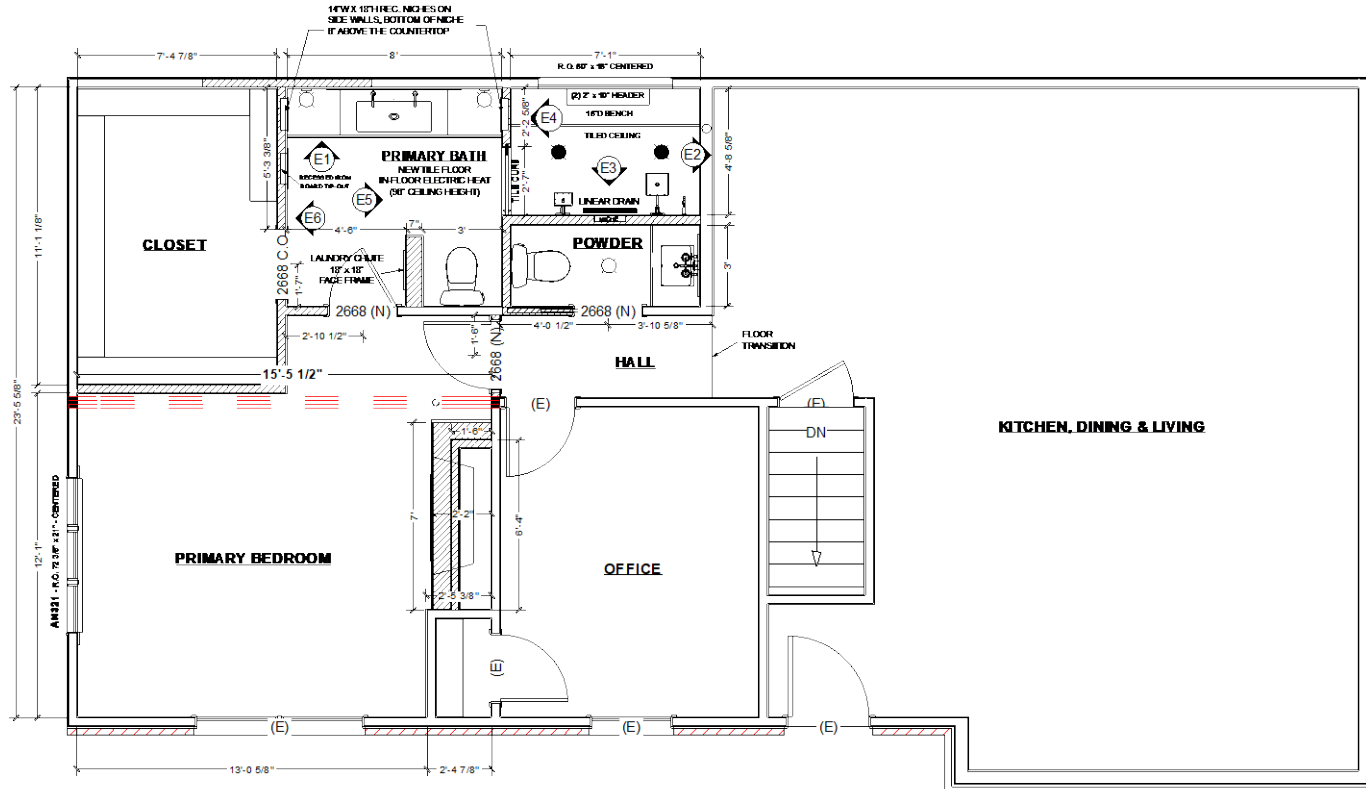
# BEFORE FLOOR PLAN



## BEFORE BATHROOM PLAN

 = DEMO WALLS

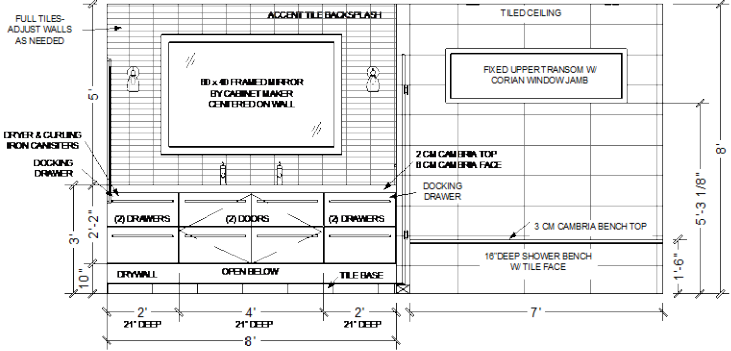
# AFTER FLOOR PLAN



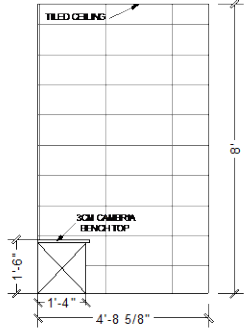
## AFTER PRIMARY BATH PLAN

 = NEW WALLS

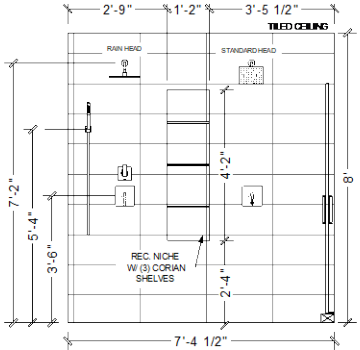
# ELEVATIONS



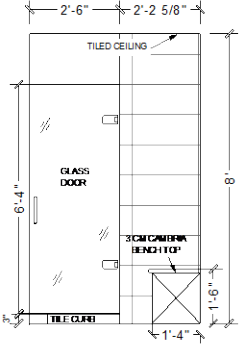
**PRIMARY BATH ELEVATION (E1)**



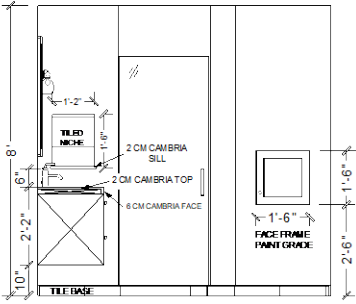
**PRIMARY BATH ELEVATION (E2)**



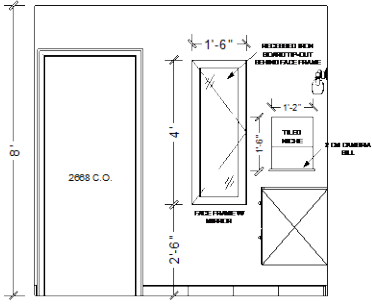
**PRIMARY BATH ELEVATION (E3)**



**PRIMARY BATH ELEVATION (E4)**



**PRIMARY BATH ELEVATION (E5)**



**PRIMARY BATH ELEVATION (E6)**

# BEFORE AND AFTER

## SOLUTIONS:

- The client provided the much-needed space for the bathroom by conceding a bedroom. More space was gained by removing the jetted tub that never got used.
- The space given allowed the bathroom to be expanded across the back of the home. It also gave the space for that required public bathroom.
- Discrete wall cubbies with power help to keep this vanity clear of any clutter.
- The laundry chute was kept and placed in the wall behind the bath entry.
- The closet now has direct access from the bathroom.





# BEFORE AND AFTER

## SOLUTIONS:

- The new primary bath has an 8' wide floating walnut vanity flush with accessible storage was installed with a decorative glass tile accent wall and a quartz top with a 6cm front edge.
- A double wide lav allows for both his and her lav faucets.
- The stylish vanity has a mix of grain matched doors and full extension drawers. The sink doors, cut to look like the drawers, conceal the shelves below the sink.
- Additional touches include a heated floor, a fun green glass tile accent wall, wood accents at the toilet storage, magazine rack, mirror frames and indirect lighting under the open vanity.





## BEFORE AND AFTER

### SOLUTIONS:

- A sizable shower was built to include a transom window which provides both privacy and much desired natural light.
- Multiple shower heads, a lineal drain, tiled ceiling with a large bench with a quartz top and ample storage are great touches for this couple's shower.

2023 COTY Awards - Vibrant Primary Bath







SUCCESS!

These homeowners now have a fresh, modern, functional, relaxing,  
and spacious bath to enjoy for many years to come!

2023 COTY Awards - Vibrant Primary Bath