



Kitchen \$50,000–\$100,000

Small Space, Big Style

Small Space, Big Style

Bloomington Kitchen

The homeowner of this Bloomington split-level townhouse wanted to update her home with a new kitchen, new flooring and fresh paint. She didn't like how closed off her kitchen was, the outdated style, or the lack of storage.

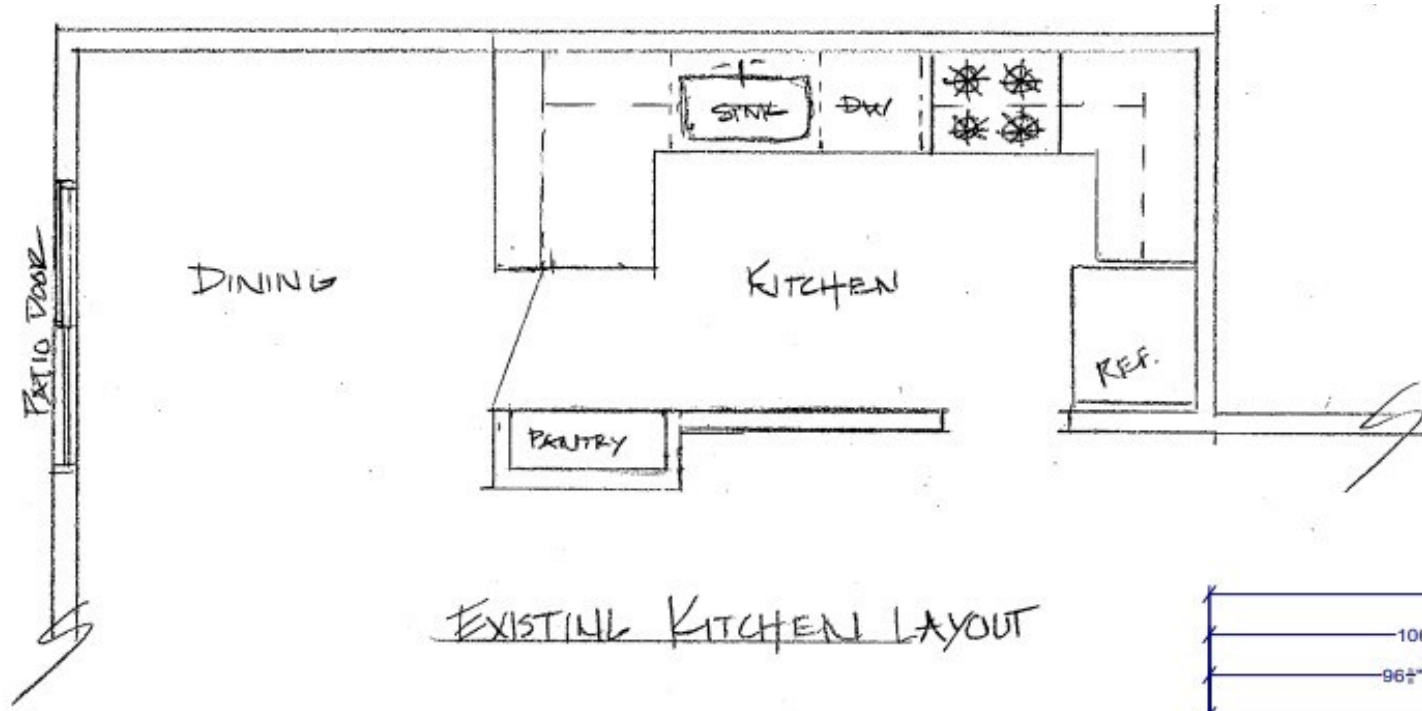
Client Goals

- Open up kitchen to entry and living room while still keeping some visual interest and sense of separation.
- Relocate sink for a better view
- New flooring
- New Appliances / cabinets / countertops

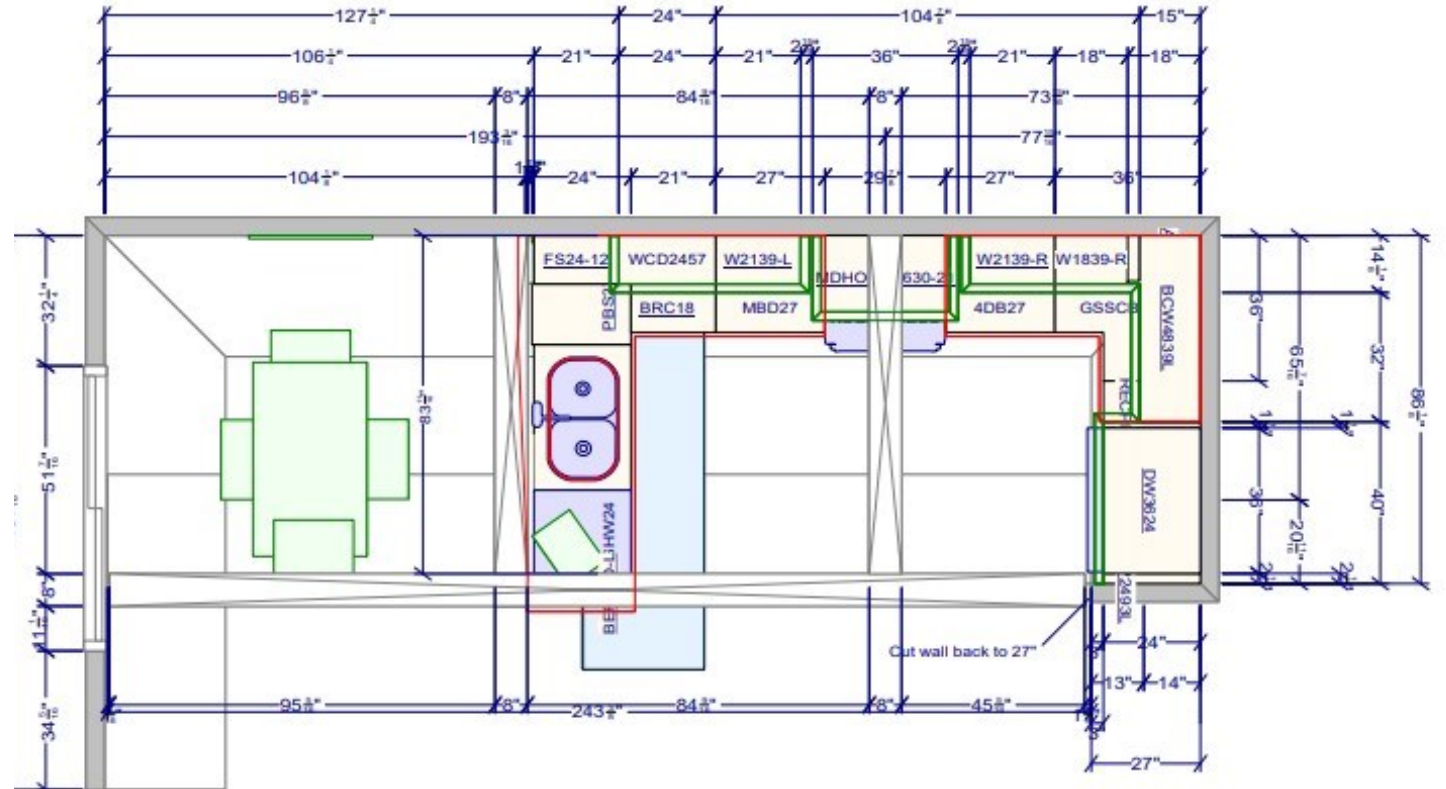
An inspiration photo that the homeowner really loved showed a decorative beam across an open kitchen. This was a great start to creating our design, however we needed to make a few modifications due to the wide span of the space. For this design we would need two support posts to hold up the beam and two additional beams for cross support. Getting everything to line up was a challenge. One post we lined with the end of the peninsula and one of the cross beams had to be centered with the hood. If anything was off it would have looked terrible. The beams were wrapped with clear cedar because of its beauty and multi-coloring which coordinated well with the existing oak trim and doors in the home.



Before and After Floor Plans



EXISTING KITCHEN LAYOUT



Renderings



Before



After



This shows us a full view with the wall removed and how the posts and beams really create a visual space for the kitchen while keeping it open to the dining and living room. New wafer lights were installed in the ceiling for much needed general lighting. LED undercabinet lights were added for task lighting. The homeowner really wanted to incorporate some wood tones in the kitchen so we coordinated the wood hood with the back and side of the peninsula. The challenge was to choose a wood that coordinated with the existing oak trim, new oak floors and cedar beams. She did not want more oak so we went with a warm stain color on cherry.

Before



After



This is the view as you are coming in the front door and looking up at the main level. We removed all carpet and linoleum and installed all new solid oak hardwood throughout the upper level. New carpet was installed on the staircase. We maintained the skylight but painted it white to blend with the ceiling. The existing railing was removed and re-installed in order to put in the new hardwood. The homeowner now has a beautiful view out the patio door as she is doing dishes or prepping food. This layout is functional and beautiful without blocking off the kitchen.

Before



After



This view really shows how much more open it is to the entry and living room. The peninsula is much more functional now with more countertop space and no overhang. She never had stools on the dining room side. The wall that was removed had a shallow pantry built-in, so we added deeper wall storage next to the refrigerator that comes down to sit on the countertop for her canned and box food. Being a one person household, this was plenty of space for her as she had another pantry right in the hallway across from the kitchen. Taller upper cabinets, large drawers and a corner lazy susan also give her more storage space.

A beautiful decorative hood is the focal point of the stove wall and is accented with a glossy blue/gray subway tile. This coordinates with her custom pillows she had selected in the adjacent living room.

The kitchen also features new quartz countertops, a silgranite sink, new appliances, and a functional appliance garage to keep the countertops clear of clutter.

This kitchen is small but full of style and function, everything the homeowner wanted and more!

