



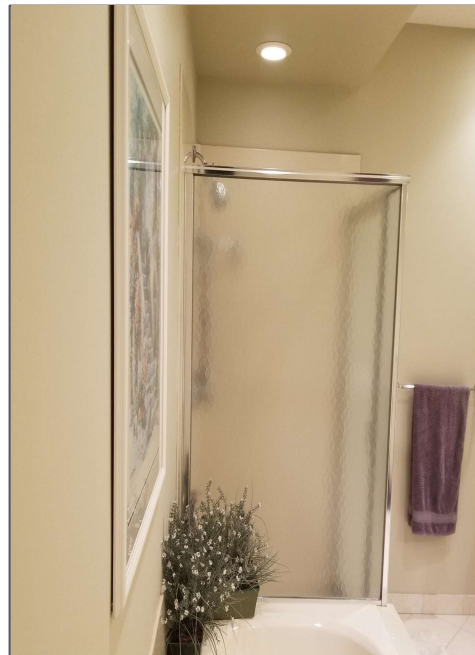
2023 CoTY submission

Residential bath
\$70,000.00 to \$100,000.00



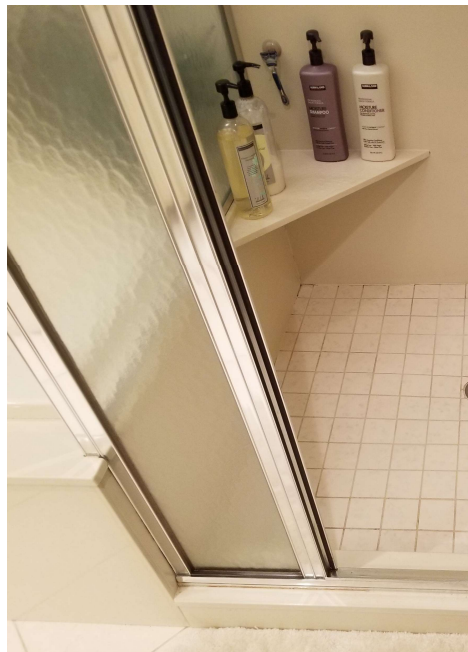
The story

The customer had been in the home for several years and finally decided it was time to get their bathroom updated and meeting their needs. The bathroom was functional but dated and dark. The client really liked the existing layout but wanted the shower to be larger and to make the tub more accessible. The other large request was they needed more lighting and the ability to control the lighting better. They also wanted to have consistency in the style and color of the space. In the end the customer was very pleased with the result and looks forward to many years of usage.



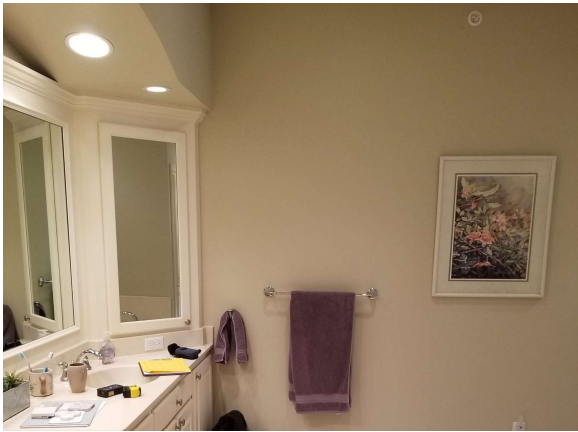
Before

- The customer felt the space was just simply outdated and bland.
- The vanity while large, was still lacking enough storage due to the cabinets on the right being angled and only 3.5” deep
- The large mirror and side mirrors were just not appealing to the homeowner
- The framed shower glass was dirty and falling apart



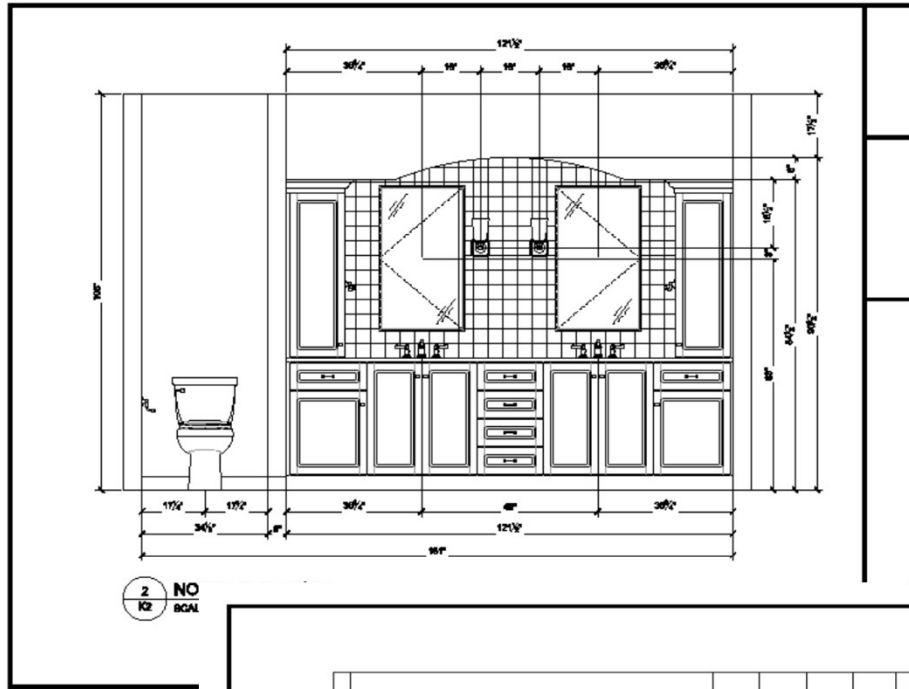
Before

- The soffit above the shower was odd and seemed out of place
- The shower niche didn't work well with the handheld
- The corner shelf was falling out and inefficient

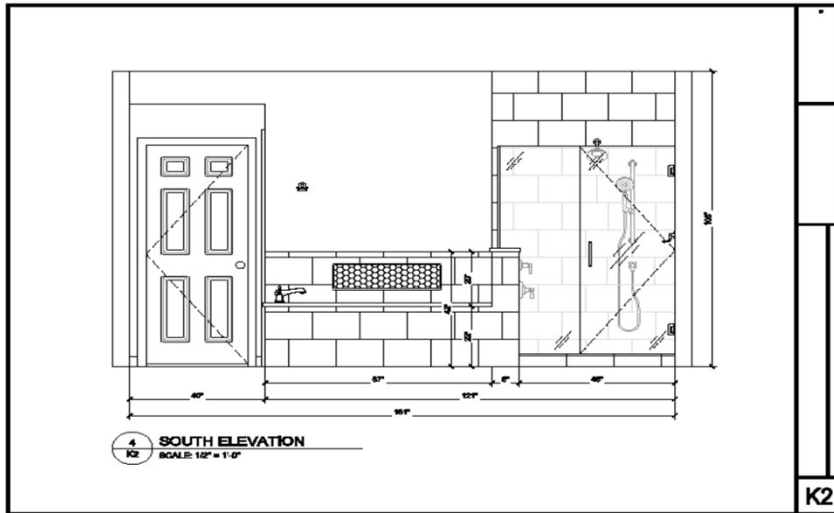


The wish list

- The customer had a simple list of wants for this project
 - Deep soaking tub with a recessed niche for storage
 - Larger shower with more storage
 - Clean lines and seamless movement within the space
 - As much storage as possible
 - Better lighting
 - Better control of the lighting



2 NO
K2 BCAL

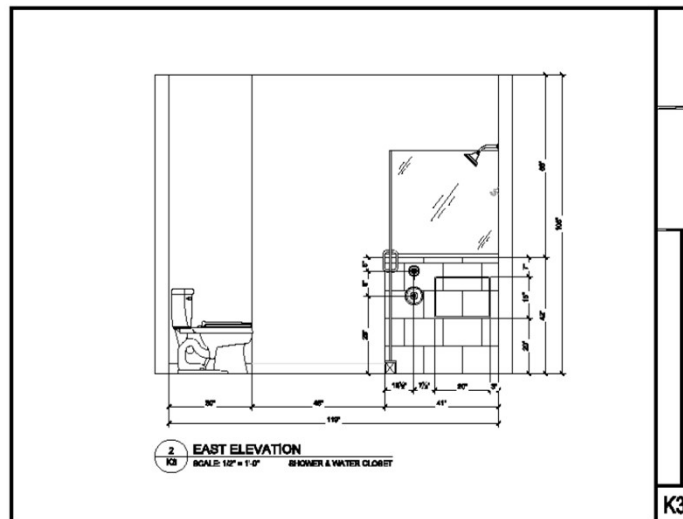
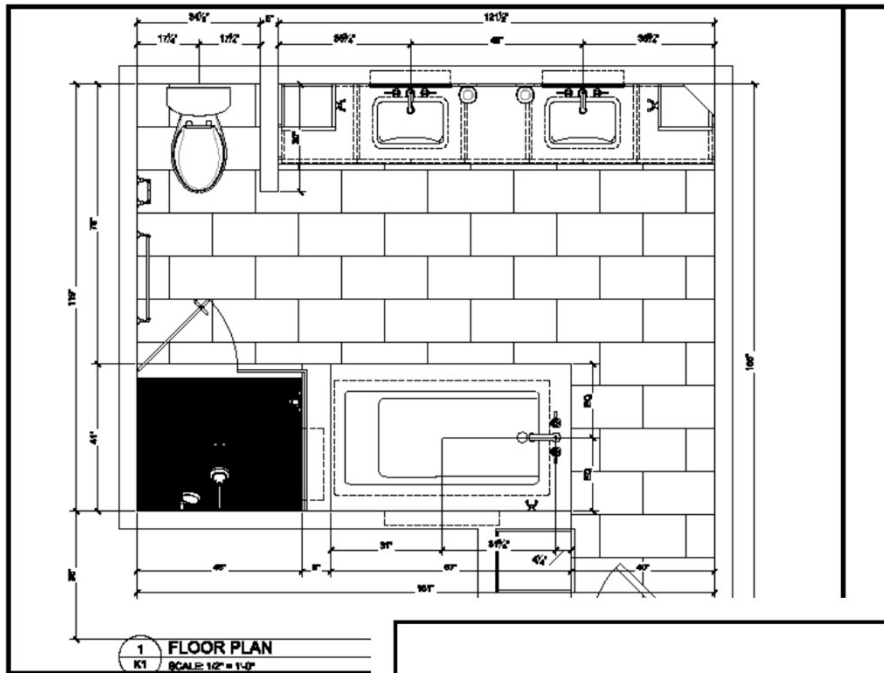


4 SOUTH ELEVATION
K2 SCALE: 1/2" = 1'-0"

K2

The plan

- Two smaller mirrors centered on the vanity
- Additional upper cabinets
- Additional lighting
- Large niche on back wall of tub
- It was very important to the homeowner that the arch over the vanity was kept in place



The plan

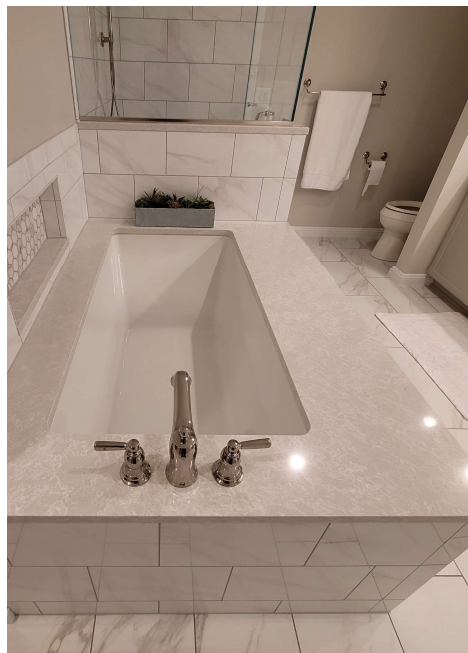
- Work within the existing floor plan.
- Create a sitting edge on the front of the tub deck.
- Hide the niche and shower controls on the back of the knee wall for a cleaner look.
- Large niche in the shower.
- Increase the size of the shower.

K3



The challenges

- The plumbing vent pipe in the wall where the niche needed to be, required removal and re-routing through the attic to make it work.
- The cabinets on the right side were against an angled wall which was not quite 45 deg. The customer really wanted as much space as possible, so our craftsman modified the framing and cabinetry to allow the cabinet to inset into the corner properly.



The finished product

- Different sizes of the same tile give the customer the clean and continuous feel they were looking for
- The undermount tub deck is set back to allow for a nice large bench area at the front. This makes getting in and out much easier



The finished product

- Frameless glass around the shower keeps everything looking good
- The two-tier niche is hidden on the back of the knee wall along with the plumbing controls. This keeps the shower walls looking clean and clutter free
- The handheld is now positioned within reach of the shower head



The finished product

- The tub wall niche is a great spot for the little things you need while soaking and the customer has big plans for the space
- The tile on the tub deck is a continuation of the tile pattern in the shower, one flows into the other



The finished product

- All new cabinets along with additional upper cabinets
- Recessed medicine cabinets add more storage that the customer requested
- Additional wall sconces help to brighten the space
- The customer wanted more lighting but also wanted simple control so dimmer switches were added throughout