



# KITCHEN

\$100K - \$150K



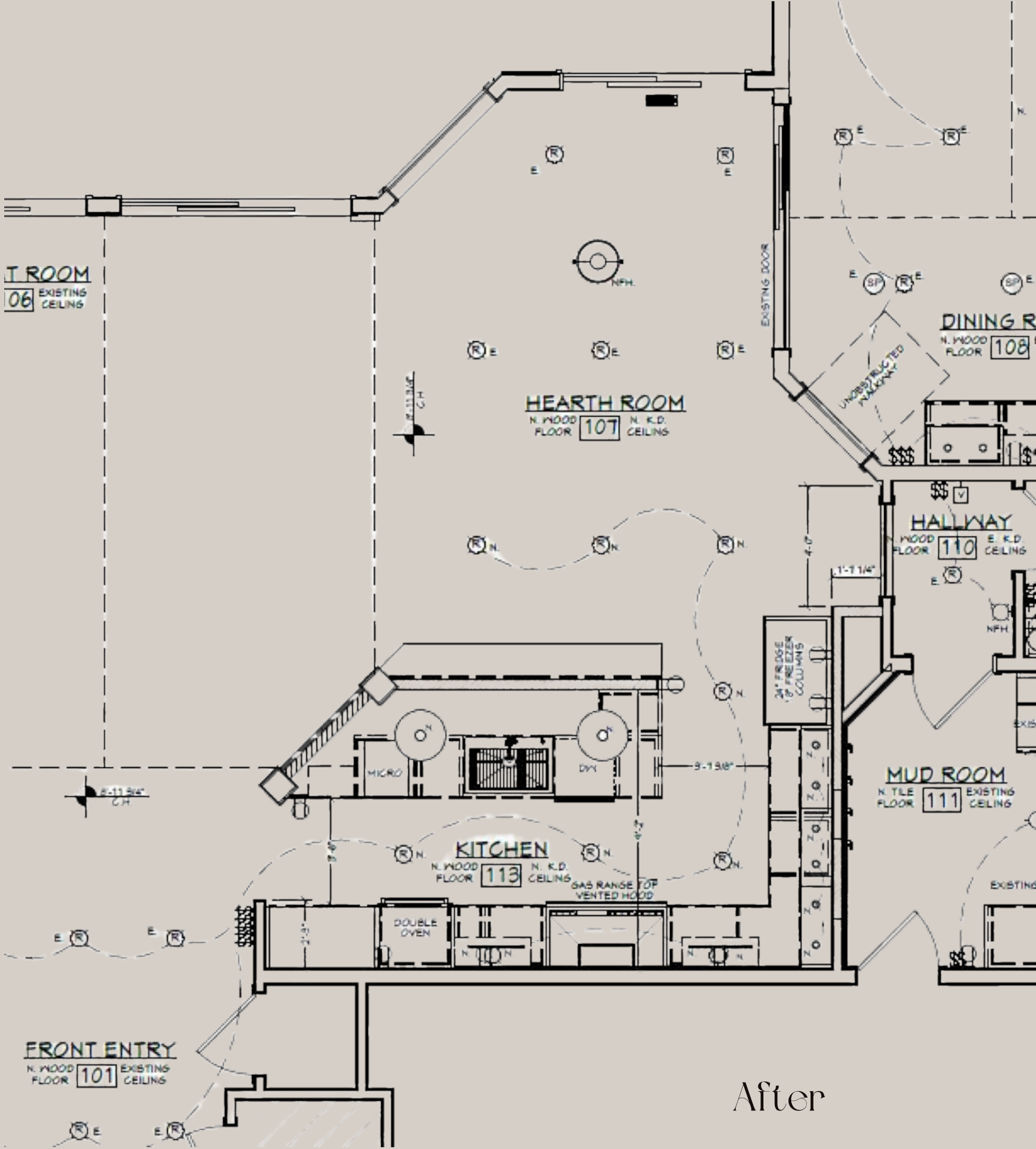
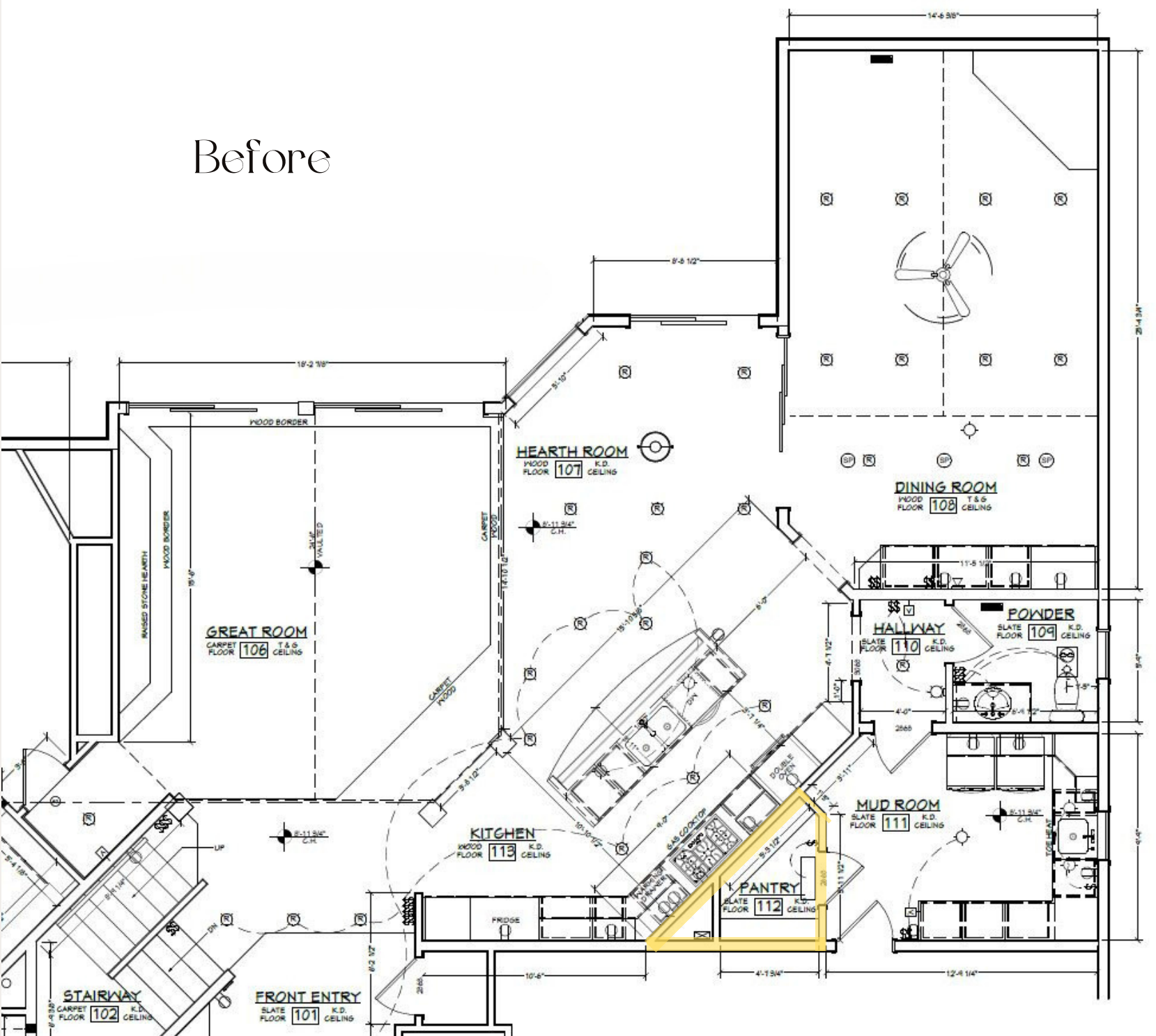
# LAKEFRONT BEAUTY

---

The homeowners of this lake home were looking for a unique transformation; brighten and modernize the kitchen while blending with the rustic overall feeling of the main level. For years the owners had been working in a cumbersome kitchen that was on an angle to the rest of the space with frustrations of poor lighting, dated appliances and cabinets that were falling apart.

The new layout took space from an underutilized mud room closet and set the stage for an updated and relevant heart of the home. Carefully selected finishes were implemented focusing on style, color, and technology. New, medium-toned wood floors served as the backdrop for enameled and stained cabinets, unique lights, and stunning plumbing fixtures atop quartz counters. A wall of glass cabinet doors features a collection of dinnerware used to nourish their beautiful family and the straightforward, practical layout leaves us with two happy homeowners.





Before and after plans show how space was reallocated from a mud room closet into squaring off the kitchen and creating better flow with new adjacent island.

After



# REFLECTIONS

---

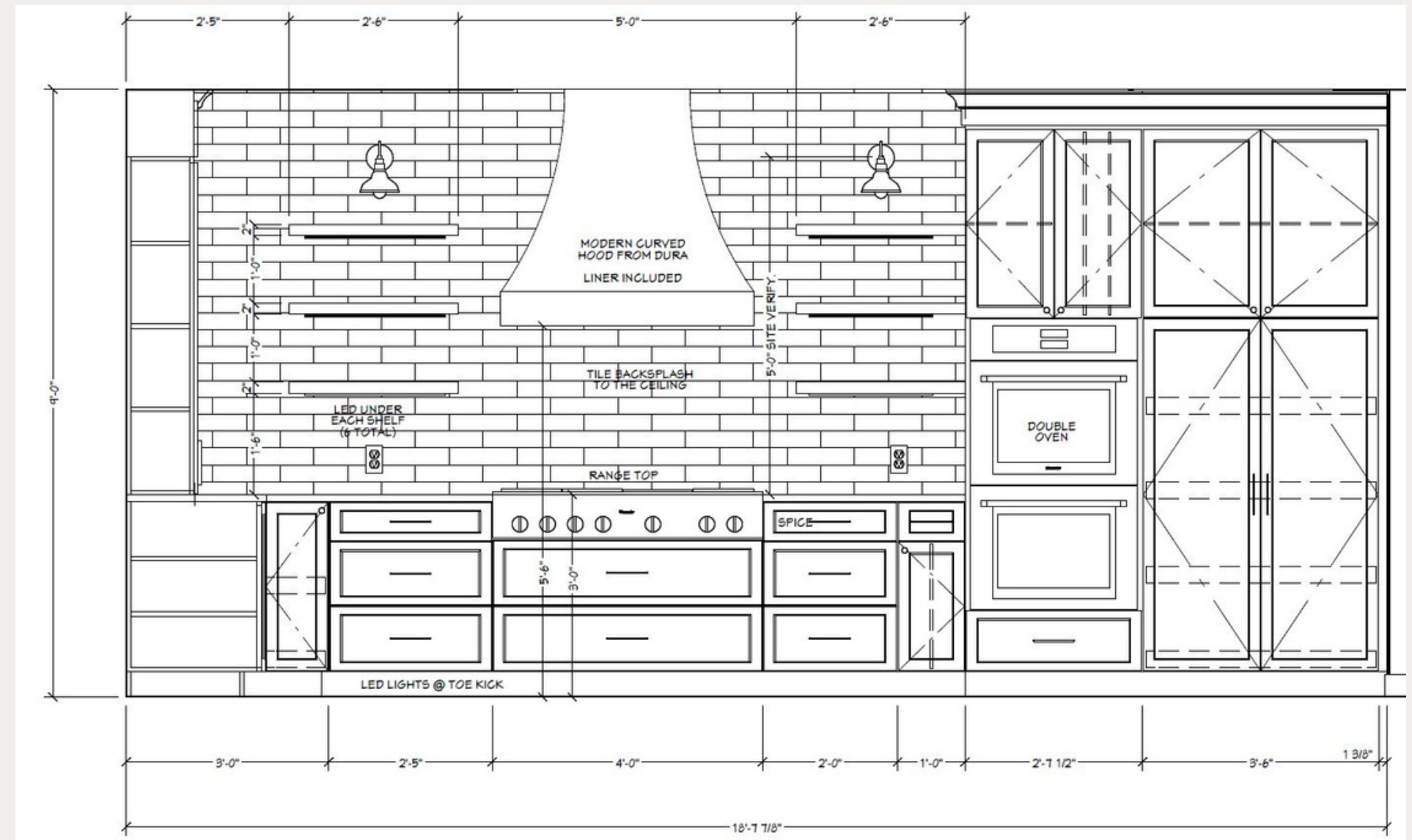


What was once dark and heavy is now bright and modern



# OUR VISION

Great detail went into the planning of this wall. From the width of the cooktop and the adjacent appliances to the depth of the floating shelves in relation to the light bloom from the sconces. The subtlety of the backsplash tile as a backdrop for the bodacious hood and the proper storage for the cook.





# NEW CONCEPT

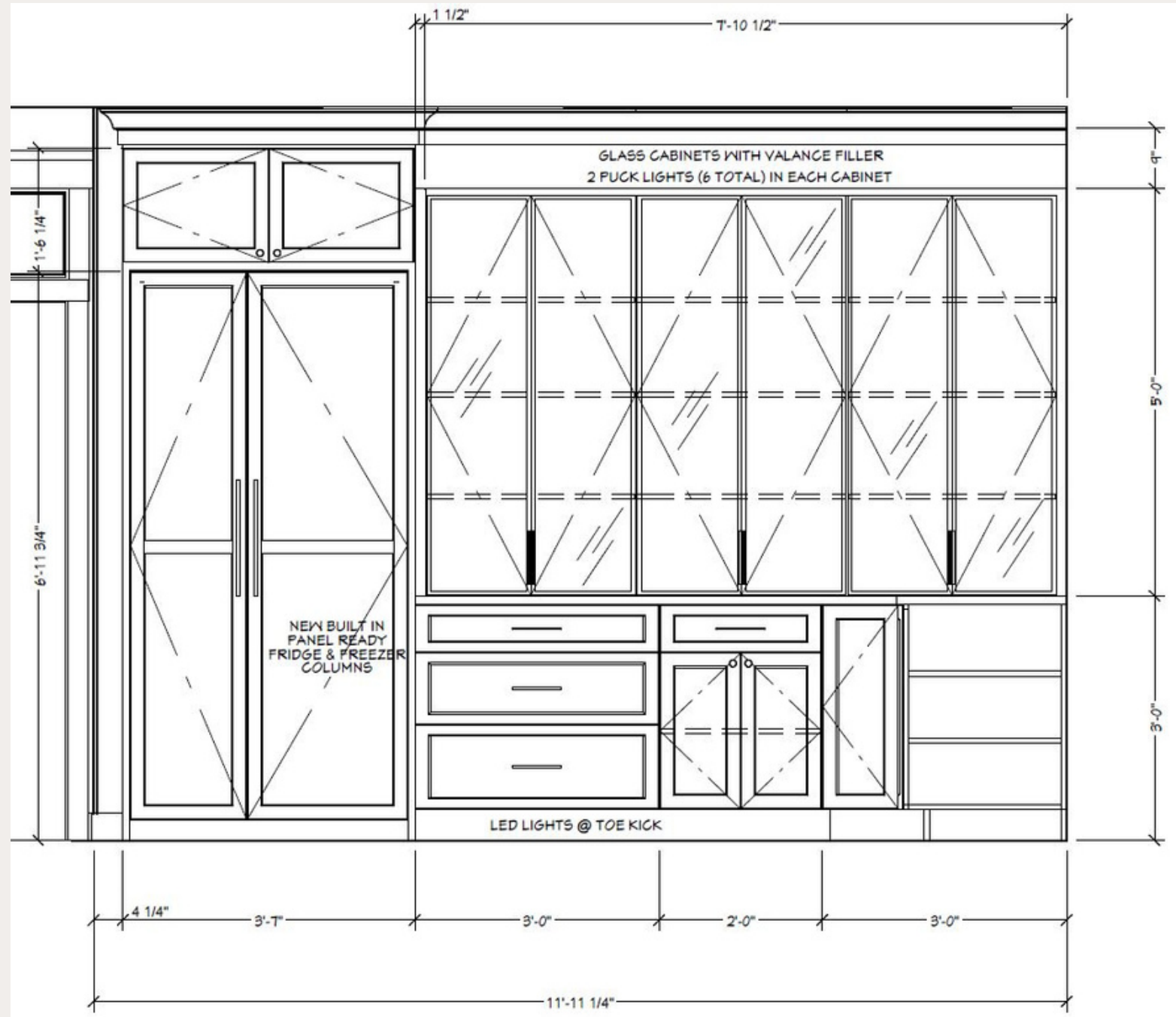


Squaring off the kitchen offered enormous potential. Creating a focal point with a storage solution led to an unexpected WOW factor.





# DESIGN DETAILS



With great attention comes great presentation. The homeowner wanted to showcase their tableware instead of hide it away. We jumped on the chance to make their dream a reality by giving them a giant "hutch".



# CRISP PRODUCT

---

Alder and oak woods, enameled whites, bright counters, stainless appliances, and multi-metal plumbing & hardware all combine to casually yet crisply appoint this timeless space.



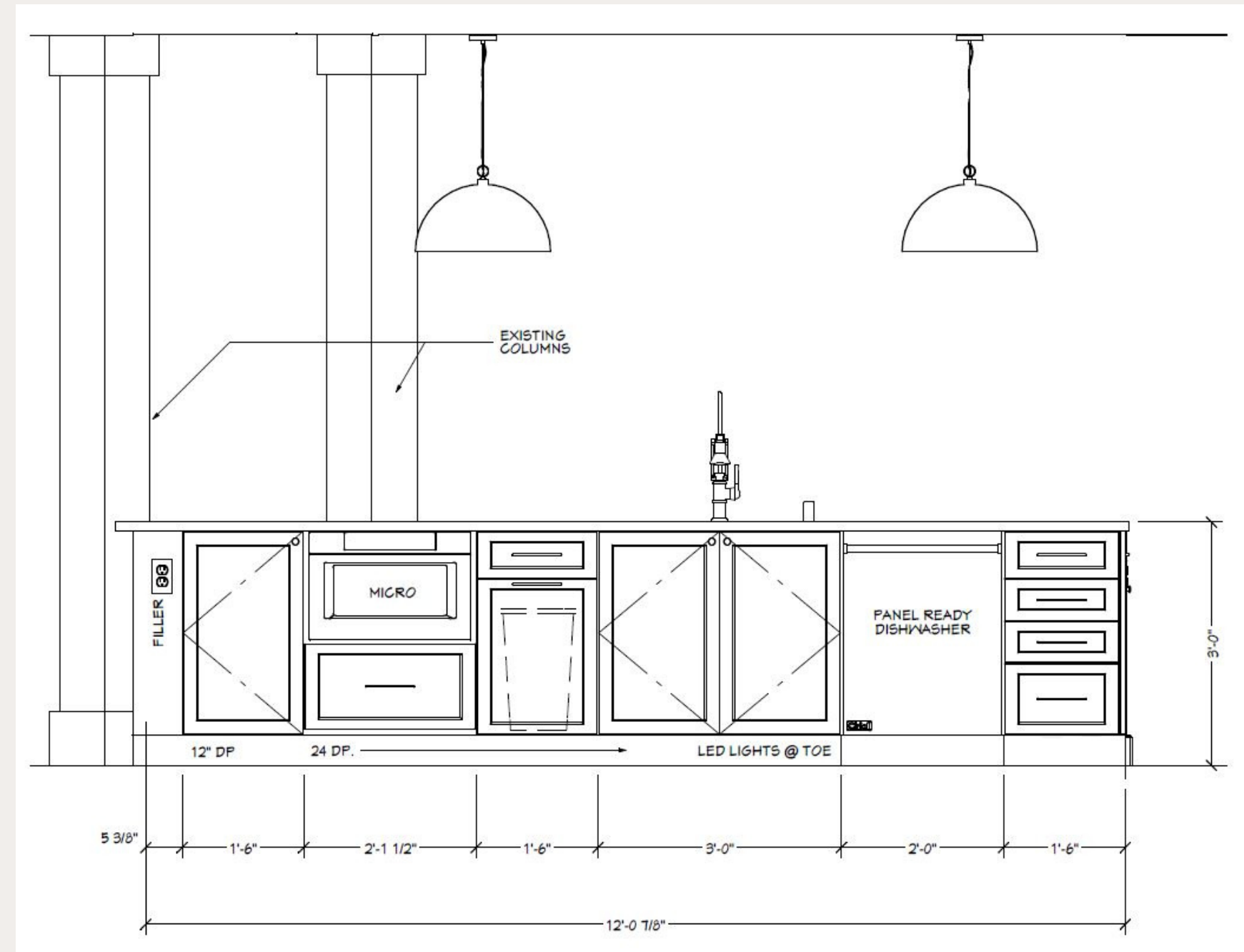
Island Before



Island After



# CONTINUITY



The existing structural columns in the kitchen posed a challenge to the layout of the new island. Our team wrapped them in a material to coordinate with the Alder wood and used paneled wainscoting to incorporate them and frame the final design.



# CONNECTED

---



---

Lakefront Beauty