

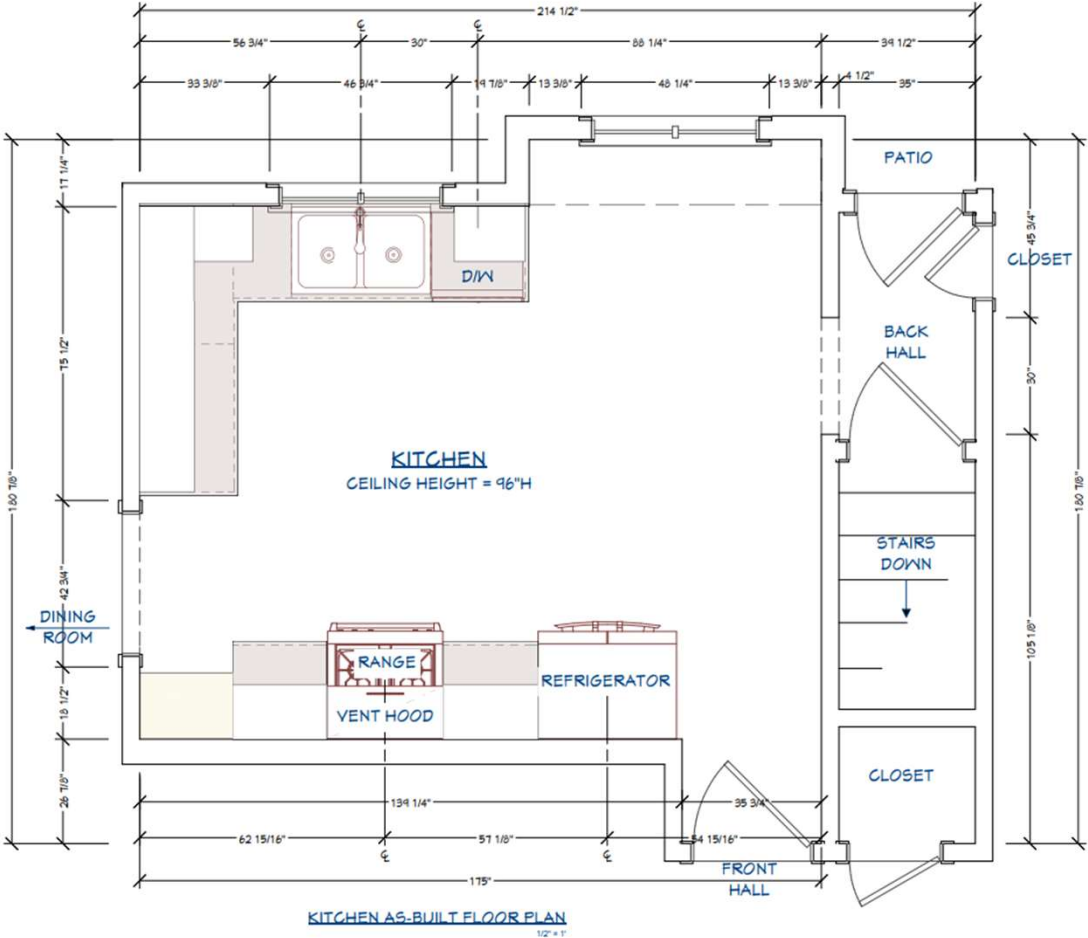
## NARI MINNESOTA – 2023 COTY AWARDS

### ENGLISH COTTAGE KITCHEN CATEGORY: Residential Kitchen \$150,000-\$200,000

Design Statement This kitchen has been updated to fit its beautiful home which exudes a casual English elegance. The desire was to brighten, update, and make the space function perfectly for the newly retired homeowners who love to cook, and spend time with their family and friends. Budget was a consideration, and they did not desire a large addition since the home had plenty of living and entertainment space, but they did want a larger kitchen without taking space from the adjacent rooms. They also wanted two comfortable seats, countertop prep space, and additional storage that would house all their supplies within their kitchen. All this was accomplished by creating a 22" bump out cantilevering off the existing floor joist but staying under the current eave to preserve the roof line. We gained an Island for storage, countertop for prep, seating for two, and a tall wall of cabinetry which increases storage exponentially accomplishing all their desires without going over their budget. We created a coffee and tea center and added storage solutions to every cabinet which included corner pull outs, spice pull outs, pot and lid organizers, docking drawer, and a multitude of larger storage drawers and roll out shelves. To maintain the homes casual English style, we used a soft green paint on the majority of the cabinetry and the hood. We also used stained oak to create furniture pieces like the Island, floating shelves, and glass door armoire which showcases their esteemed family heirlooms and adds to the casual elegance of the home. The clients love their new kitchen and spend most of their time in it cooking, reading the paper, eating together and enjoying the newly named "truth chairs" that no one seems to want to get out of once they've sat down. Second Designer on the project- Michal Crosby of Michal Crosby Designs, Inc.



BEFORE PLAN



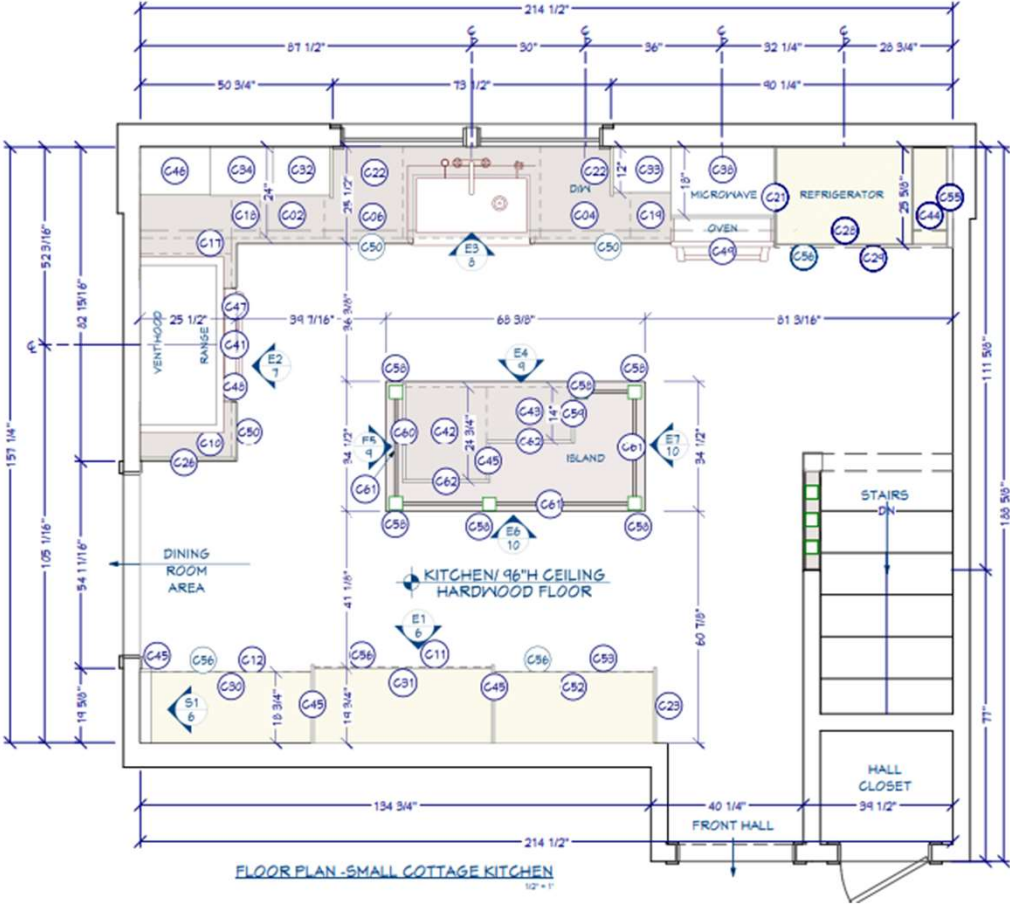
ENGLISH COTTAGE KITCHEN – RESIDENTIAL KITCHEN \$150,000 TO \$200,000

BEFORE PHOTOS

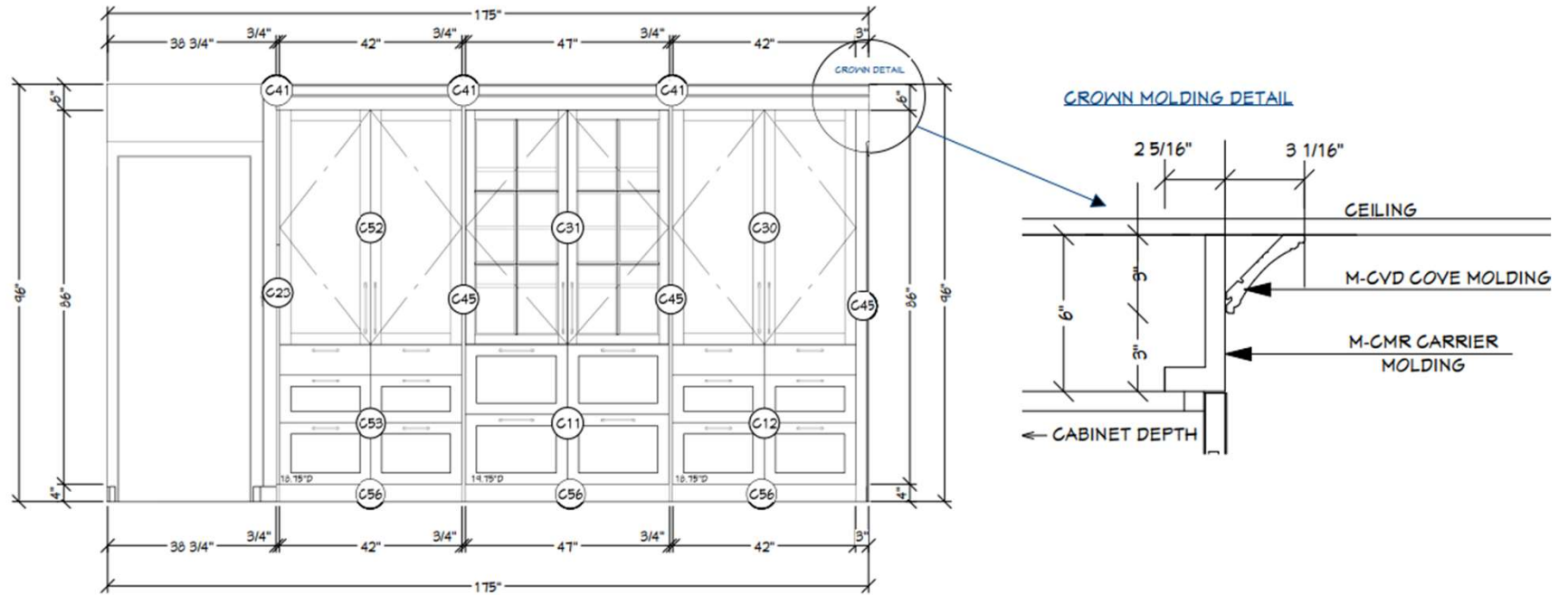


ENGLISH COTTAGE KITCHEN – RESIDENTIAL KITCHEN \$150,000 TO \$200,000

AFTER PLAN

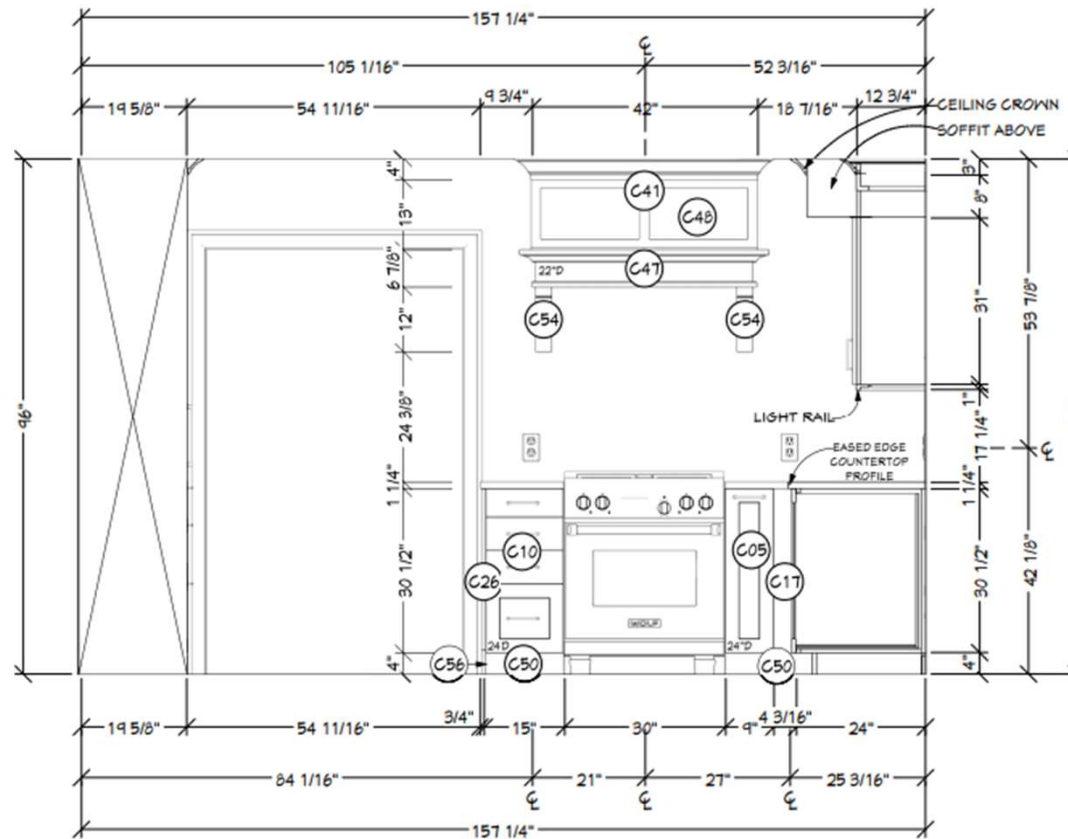


# AFTER ELEVATIONS AND CROWN DETAILS, E1



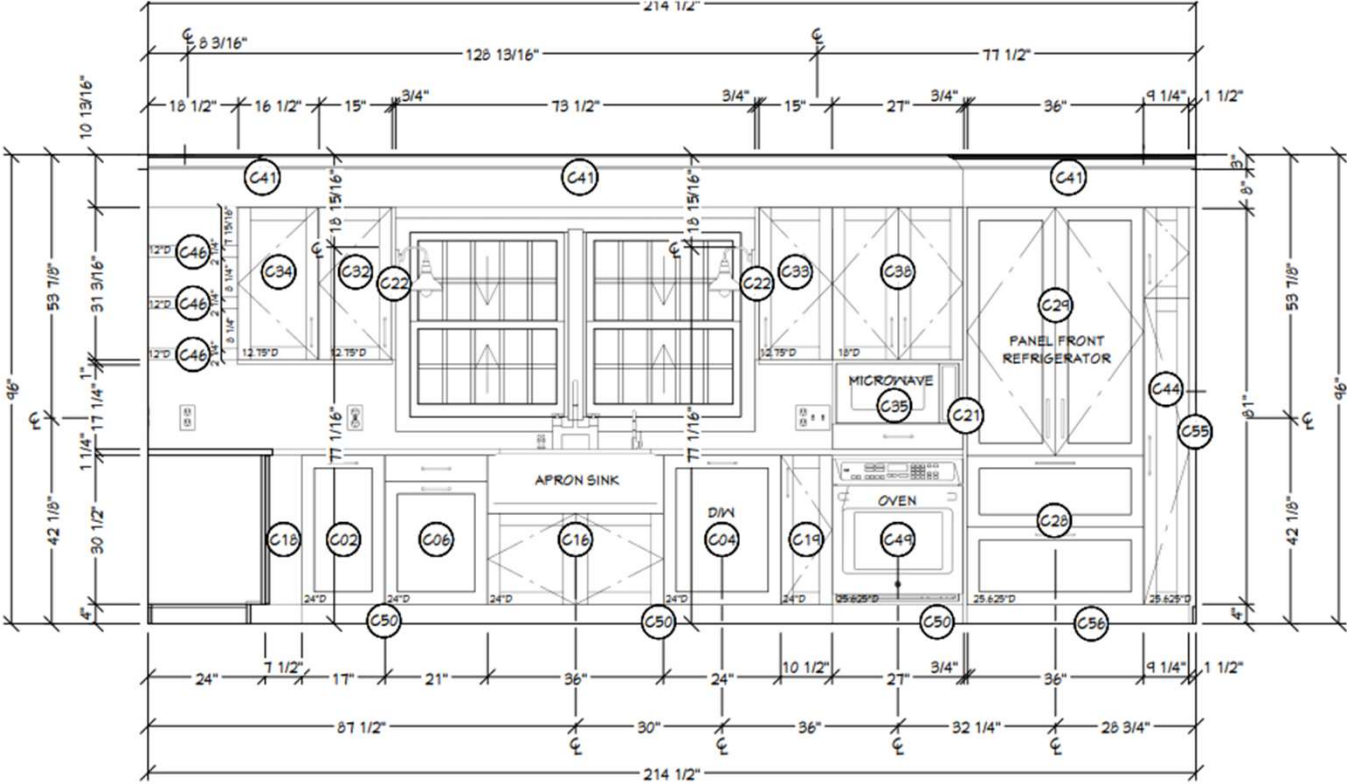
**E1** CABINET ELEVATION  
3  
1/2" = 1"

# AFTER ELEVATIONS AND ACCESORY DETAILS, E2



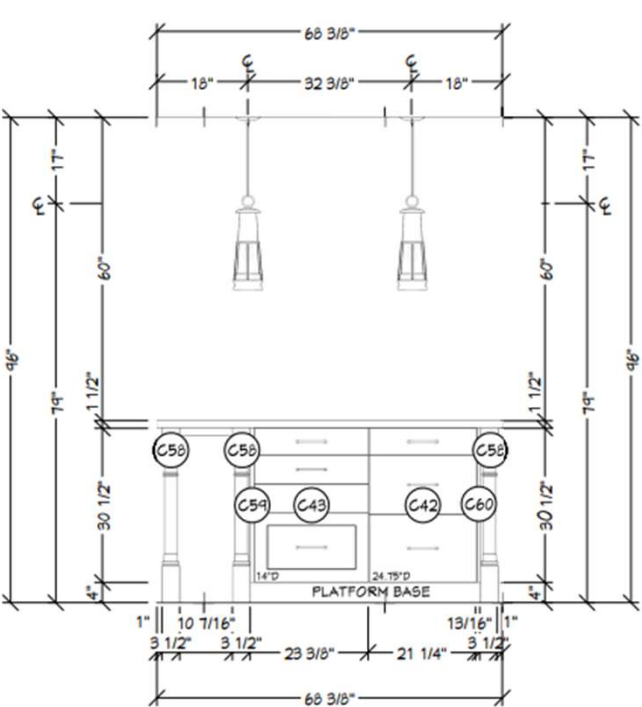
ENGLISH COTTAGE KITCHEN – RESIDENTIAL KITCHEN \$150,000 TO \$200,000

AFTER ELEVATIONS AND ACCESSORY DETAILS, E3

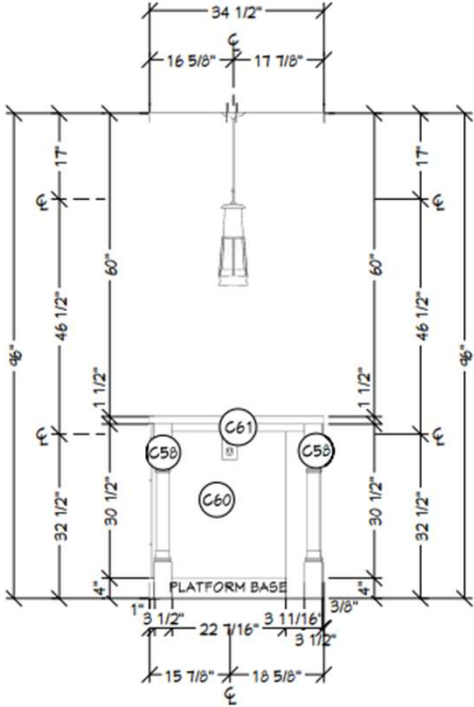


ENGLISH COTTAGE KITCHEN – RESIDENTIAL KITCHEN \$150,000 TO \$200,000

AFTER ELEVATIONS AND ACCESSORY DETAILS, E4, E5



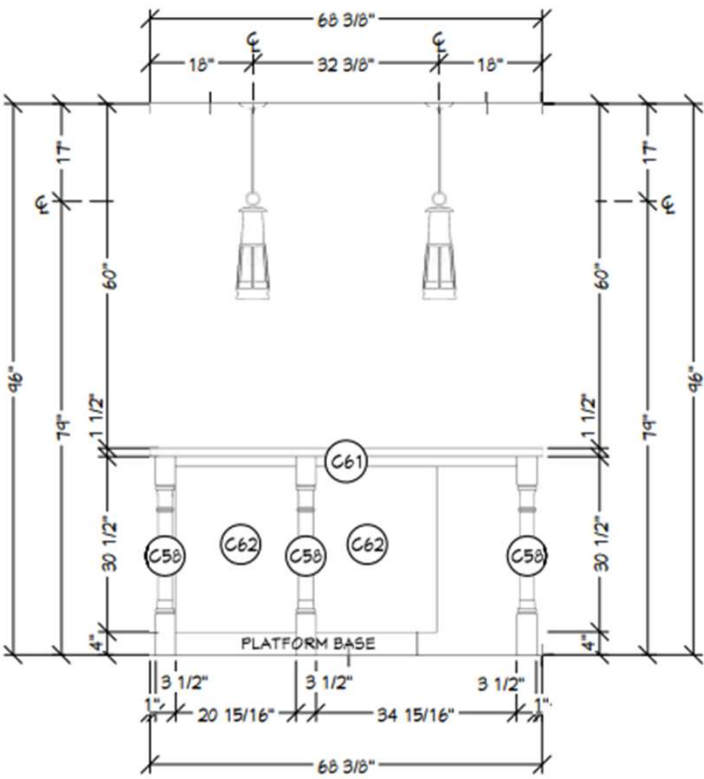
**E4** CABINET ELEVATION  
 3  
 1/2" = 1"



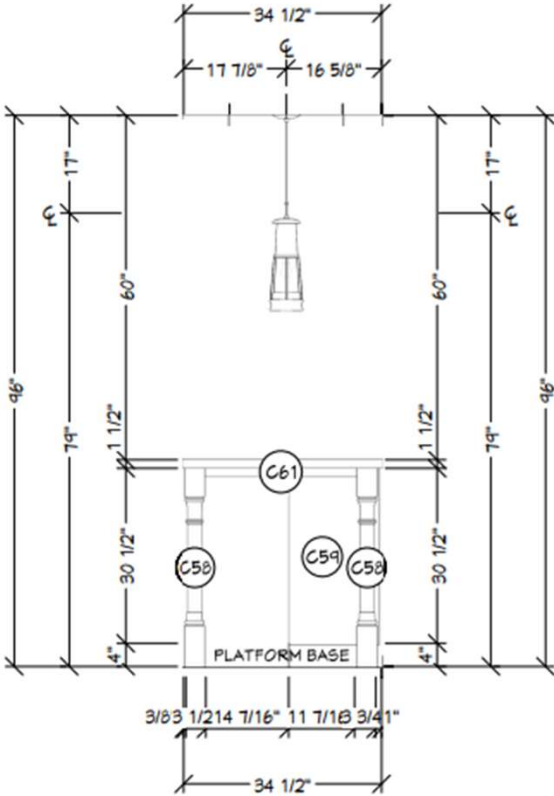
**E5** CABINET ELEVATION  
 3  
 1/2" = 1"



AFTER ELEVATIONS AND ACCESSORY DETAILS, E6, E7



E6 ELEVATION  
1/2" = 1'



E7 ELEVATION  
1/2" = 1'

AFTER PERSPECTIVE RENDERINGS



ENGLISH COTTAGE KITCHEN – RESIDENTIAL KITCHEN \$150,000 TO \$200,000

AFTER PERSPECTIVE RENDERING



ENGLISH COTTAGE KITCHEN – RESIDENTIAL KITCHEN \$150,000 TO \$200,000

## FORM

- Use of color and materials reinforced the casual English cottage style of the house with a soft green color palette for most of the cabinetry
- Stained oak was incorporated into various pieces of cabinetry to create furniture like pieces to showcase their family heirlooms while maintaining a transitional English cottage feel to the space.
- Mullioned windows at the sink area capture natural light and gives the kitchen a warm homey feel.
- Farmhouse sink reinforced the English cottage feel of the space.
- The white range gives the appearance of a vintage appliance which was the perfect accent to the custom designed wood hood.



ENGLISH COTTAGE KITCHEN – RESIDENTIAL KITCHEN \$150,000 TO \$200,000

## FUNCTION

- The kitchen remodel was able to give the clients exactly what they wanted without adding additional space that they didn't need.
- Cantilevering out 22" allowed us to stay within the existing roofline while tying into existing floor joists, which allowed us to stay within the client's budget.
- The addition of an island allows for a prep area and more storage which makes the beautiful kitchen functional as a workspace for the newly retired homeowners who love to cook and spend time with their family and friends.
- We created a coffee and tea center and added storage solutions to every cabinet which included corner pull outs, spice pull outs, pot and lid organizers, docking drawer, and a multitude of larger storage drawers and roll out shelves.
- Tall cabinetry wall provided interest with the two-tone finishes, decorative glass, and provided functionality with plenty of additional storage.



## PROJECT CHALLENGES



- Low pitched roof didn't allow space for the beam that was needed for structural support. This required us to re-frame the opening and add spray foam insulation to meet current codes.
- Existing walls were 4" exterior walls. New walls needed to be 6" walls, which made lining up the two different wall thicknesses challenging. This required pockets inside the walls to accept the supporting beam posts.
- Cantilever was done over an existing well room, which needed to be removed and re-built. The exterior wall required new waterproofing.



AFTER PHOTOS



ENGLISH COTTAGE KITCHEN – RESIDENTIAL KITCHEN \$150,000 TO \$200,000