



*Tantalizing Textures -  
An Owners' Bath Oasis*

# Project Statement

This 1990's ensuite bathroom was suffering from an acute case of the "angles". A corner whirlpool tub, corner shower, and faceted toilet area spiraled off from the double vanity is a dizzying assembly of 45° turns. The original fixtures and finishes were outdated and completely out of sync with the new homeowners' desires for a soothing bathing and grooming experience. They were looking to have privacy of functions, updated bathing experiences including a soaking tub and steam shower, a separate WC, and an overall more inviting and relaxing space that put design at the forefront.

The cure for these unfortunate 1990's maladies, as well as the lack of adequate storage, was a complete redesign of the plan including integration of the latest bathing technologies, generous storage areas, and luxury finishes throughout. To fix the layout issues, additional space was annexed from the closet/hall area. This space became the vanity/storage area, while the original space was rethought into a new bathing room and private WC. The separate areas allow different activities to happen simultaneously without interruption. Each room is well-sized to its function with appropriate dimmable lighting and accessible compatible storage solutions. In a space with no natural light, the abundant, controllable lighting and light wall and floor finishes helps to keep it feeling bright and comforting.

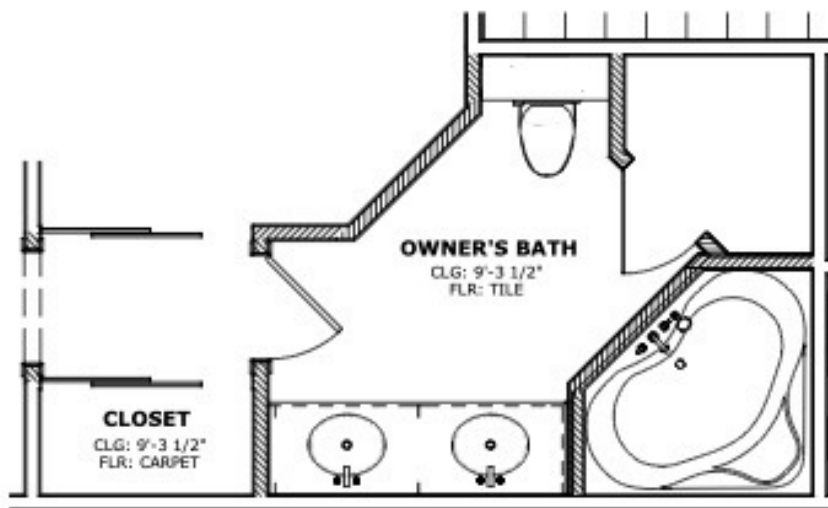


The custom double vanity, in two-tone dark wood and black finish, incorporates multiple drawers, pull-outs, and a deep pull-out with an electrical outlet for grooming tool storage. It is topped with a quartz countertop, undermount sinks, and opulent faucets of brushed brass with black glass inlays. The wall behind it is a full-height backdrop of tantalizing textures - a field of white porcelain, Thassos marble, and brass in a chevron pattern, wrapped in a ribbed black frame. Customized medicine cabinets flanked by tall, two-toned sconces complete the artistic wall composition. Across from the vanity is a full wall of linen storage in a lush, loden green punctuated with brushed brass hardware pulling in a color scheme found throughout the home.

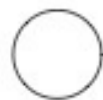
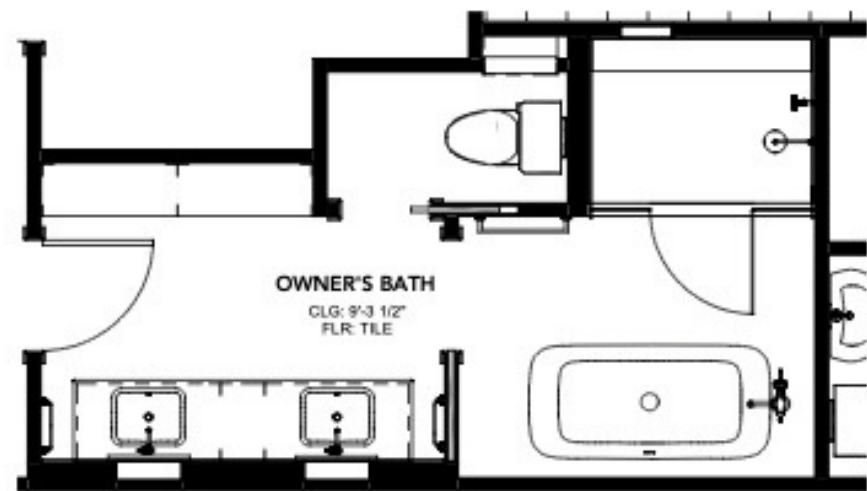
The bathing area features a free-standing soaking tub with chromotherapy functions. Alongside runs a shallow dark oak shelf for art and accoutrements. The steam shower is a testament to art and technology merged. The digitally-controlled multi-functional steam shower is enhanced by the beauty of its surroundings including large-format ribbed black tiles on the side walls and a field of artisan subway tile with a decorative stripe of intricate geometric delight, a recessed niche, and built-in bench on the back wall. The generous shower is enclosed with full-height glass panels and a center door with transom for the proper steam experience.

Finally, the private WC area has recessed cabinetry that houses the steam shower controls and has storage for supplies. A state of the art toilet with heat and bidet functions rounds out the technological enhancements of this bathroom. The homeowners are finding great delight in their new bathroom. They have found that the layout affords privacy while the high-tech fixtures allow for personalized bathing and grooming and daily relaxation. It is the perfect assemblage of space, artistry, and technology. They love it!

# Plan Views



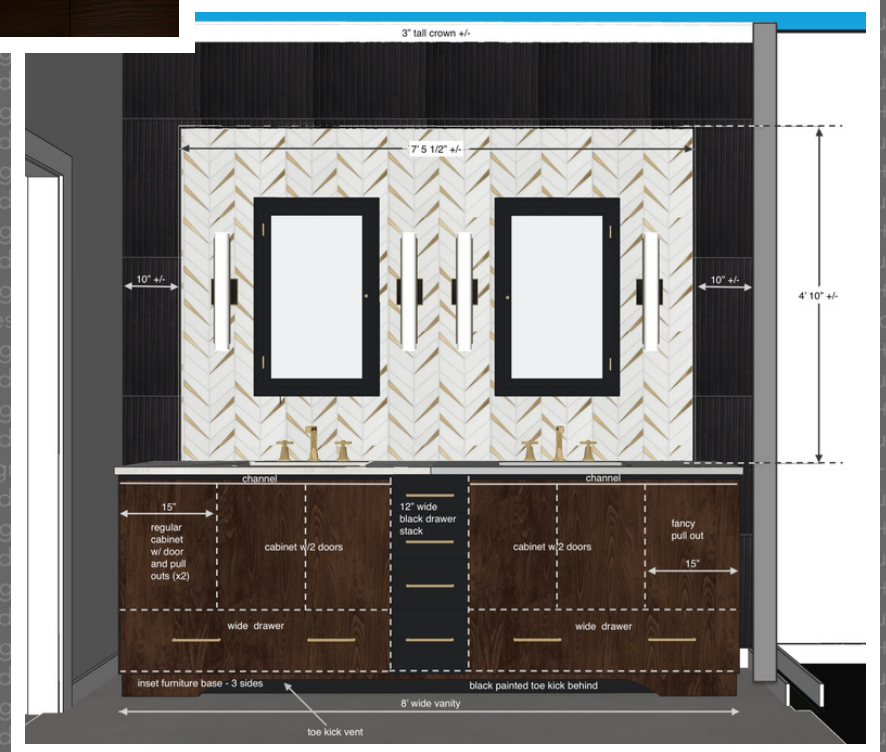
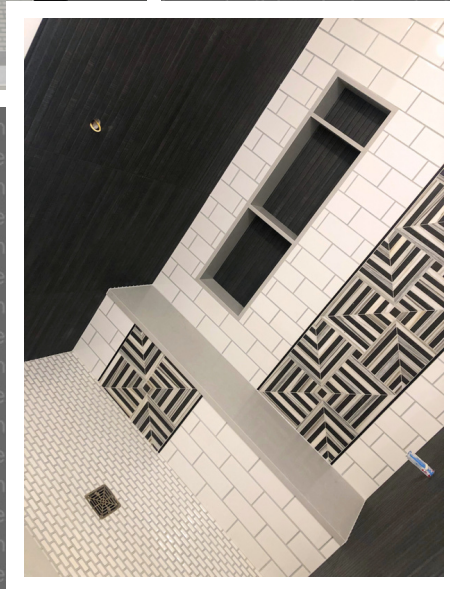
**BEFORE PLAN**



**AFTER PLAN**

# 3D Views

Plans and 2-D elevations can only take a design part way to realization. Using full-color 3-D renderings in the design process is vital for envisioning the details. Homeowners gain an understanding of the location, materials, and patterns and how it will be experienced from different angles. Trade partners and artisans can use the images to guide their work. To ensure the final result is what everyone expects, no matter how detailed the rendering, there is no substitute for on-site collaboration between designers and artisans reviewing the realities of the built world.



RENDERING

REALITY

REALITY

before/after



before/after



after



before/after



before



after

before/after



after



before



# Client Objective

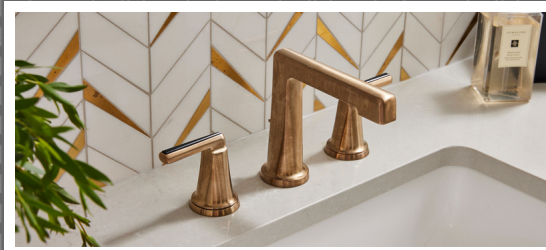
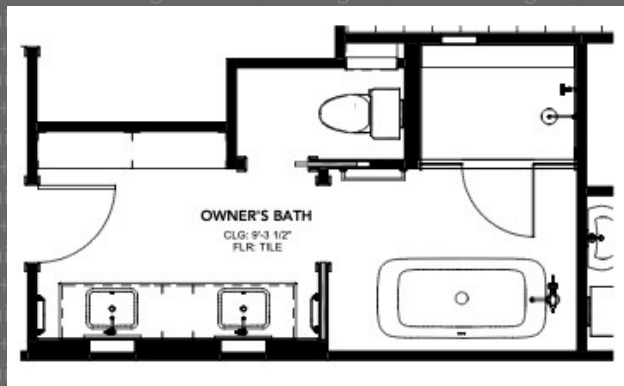
1. Get rid of the angles! A corner whirlpool bath, corner shower, faceted toilet nook, and vanity were all squeezed into each corner.

2. Create a luxurious bathing area including a steam shower and free-standing soaking tub.

3. Allow for a separate water closet and include an ample double vanity as well as plenty of linen storage.

4. Modernize the fixtures and aesthetics - ditch the boring beige.

5. Enhance functionality by incorporating the latest technologies.



2 5

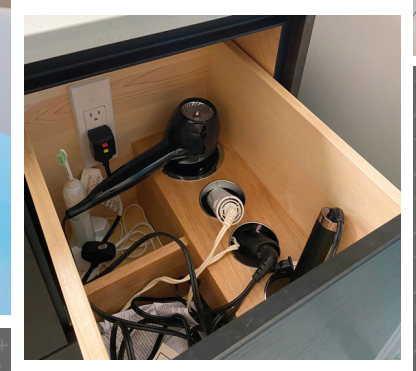
3

1

4

# Functionality

1. The design consisted of three zones for privacy and function - vanity & storage, showering & bathing, water closet - all which can be separated with privacy doors.
2. Steam shower with recessed storage niche and integrated bench. Flush back space for comfort when seated to enjoy the steam.
3. Free-standing tub with two specialized heating zones and Chromatherapy. Custom perch nearby for decor and beverage of choice.
4. Extra-wide, full-height linen cabinet; vanity with plenty of storage including powered-up drawers to host specialized grooming appliances.
5. Reconfigured space so that the circulation no longer must go through the closet areas to get to the bathroom.



# Aesthetics

1. A windowless space is kept inviting and interesting with warm whites, a soft light-colored floor, ample lighting, and an array of tantalizing textures

3



2. The dark wood vanity and loden green linen storage flank the main space while the sparkly white and brass chevron tile framed in black enlivens the vanity wall.

3. In the bathing area, a black and soft white palette of intricate geometric tile in the shower is juxtaposed against a serene tub area featuring a full-width wood shelf to add function and style.

4. Brushed brass & matte black finishes bring an elegant emphasis to the cabinet hardware, plumbing and lighting fixtures tying all the textural elements together.

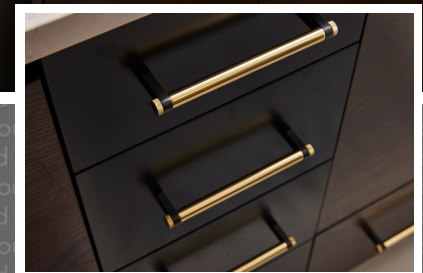
3



1



2



# Craftsmanship

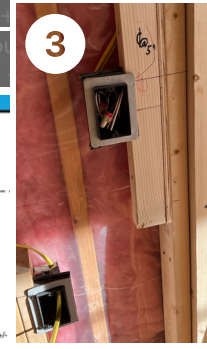
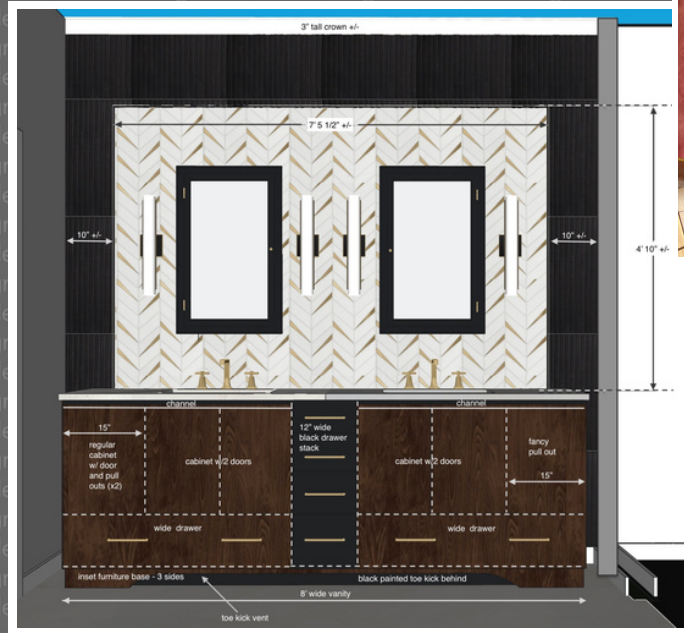
1. The modern two-toned vanity includes dark channel hardware aside visible cabinet pulls which match the vanity lights perfectly.

Channel hardware allowed for maximized storage and left the visible hardware clean and uncluttered to the eye.

2. The owners asked to reclaim a medicine cabinet they found that was at the right price, but not the right finish. A new, durable finish was sprayed on and hardware swapped out to accommodate the palette.

3. Required GFCI receptacles can be an eye sore in a field of beautiful artisan tile. With the appropriate planning and keen focus on details across all disciplines - they disappear.

4. Easy access to the many components was crucial with this tech-packed bathroom. Included in the plan was an easy access storage cabinet in the WC hosting not only storage for toiletries, but also the steam shower control panel.



1

3

4

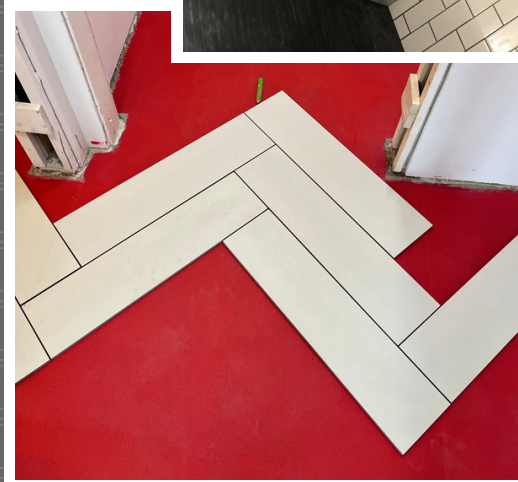
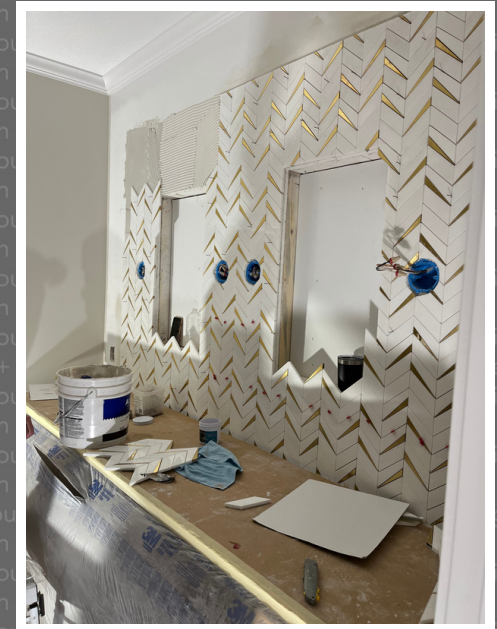
2

# Craftsmanship

## Feature: Bath Tile

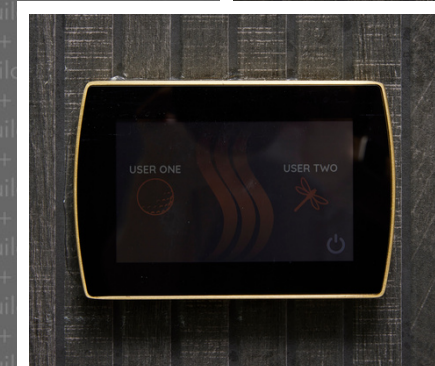
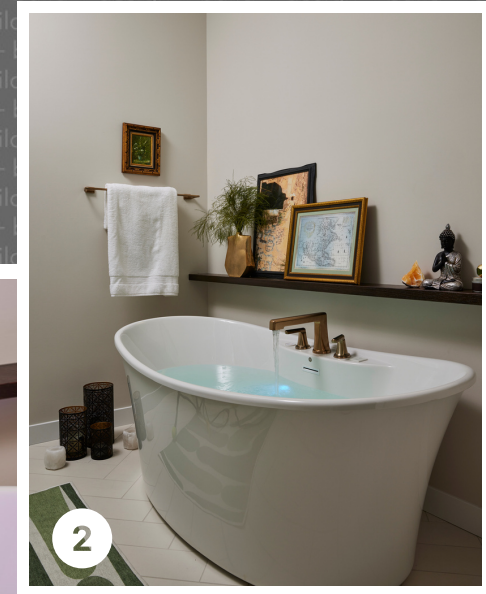
The shower tile in this bathroom is a true testament to our entire team's prowess. Our first tile artisan was in charge of realizing this epic feat. Between necessary alignments for varied tile sizes and thicknesses (5 separate tiles in the design), plus the addition of multiple solid surface accents, multiple site visits were required to get everything aligned just right. From framing, drywall, tile prep and final install - in the end all measurements worked out perfectly! This same artisan expertly laid out the challenging herringbone floor tile pattern. Quite tricky with 3 different doorways to work around!

Our second tile artisan focused on the full wall of tile behind the vanity. Large format textured black tile frames a white and gold chevron field with intermediate metal banding. The field tile was cut around the recessed medicine cabinets.



# Innovation

1. A state-of-the-art steam shower has digital controls, a generator wired to the utility room below, and a custom glass surround for desired ventilation. The central controls and manifolds are tucked away inside a cabinet in the WC.
2. A custom MTI free-standing tub with a 2-zone thermaltherapy heating system and chromatherapy using LED lights required wires to be fished through the floor to their required power supplies, preserving a clean open space around the tub area.
3. The WC features a high-tech electronic bidet seat including 5 spray settings, built-in air deodorizing system, heated seat, warm-air dryer, remote control, memory settings, and more.



wash your worries away!

