

Tasty Textures - A Next Generation Kitchen



Project Statement

Acquiring her mother's townhouse in Edina and making it feel like home was our client's challenge after relocating back to her hometown with her husband & college-age kids. After getting moved in, the first of their desires was to open the kitchen to the adjacent soaring living/dining spaces making it an integral part of the overall experience of the main floor.

The original early 1990's kitchen had all the hallmarks of that era. A diagonally oriented island with faceted sides was central to the space and the "country kitchen"-style cabinetry was surrounded by dated wallpaper and checkerboard tile. Aesthetically, our clients wanted a sophisticated, transitional look, but vastly more importantly, they needed a kitchen that had functional work spaces, ample storage, and the ability to become the center of gatherings with openness and inviting seating.

To accomplish these goals, we started by determining how best to open the two walls to the adjacent living area. After some pre-construction discovery work, it was clear that a structural post would be required to support the roof and ceiling systems. A simple post or even an elaborate column looked under-sized and out of place beneath the weighty angled walls above, so we developed a three-level functional and beautiful cabinet to encapsulate the required post and placed all the elements perfectly to land right where it was needed. Instead of looking like an afterthought, this now looks like a well-planned feature with enough presence to support the corner and anchor the generous island.

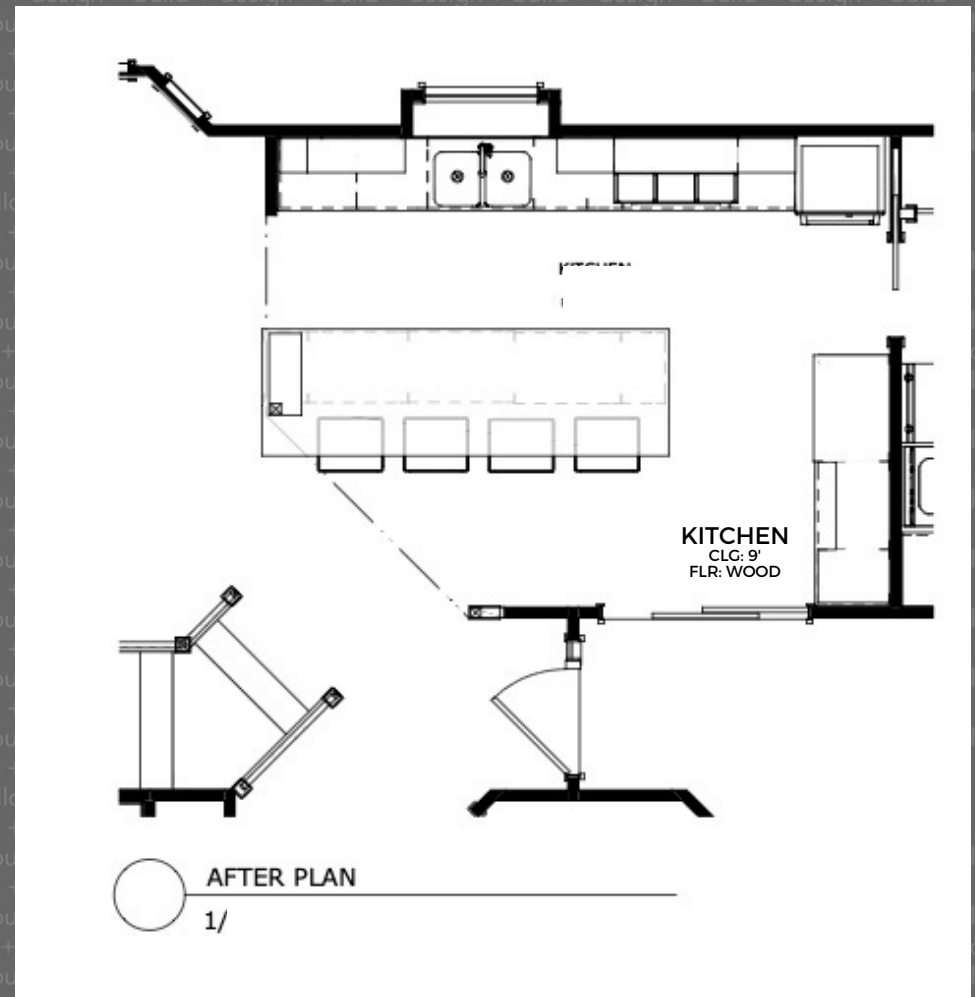
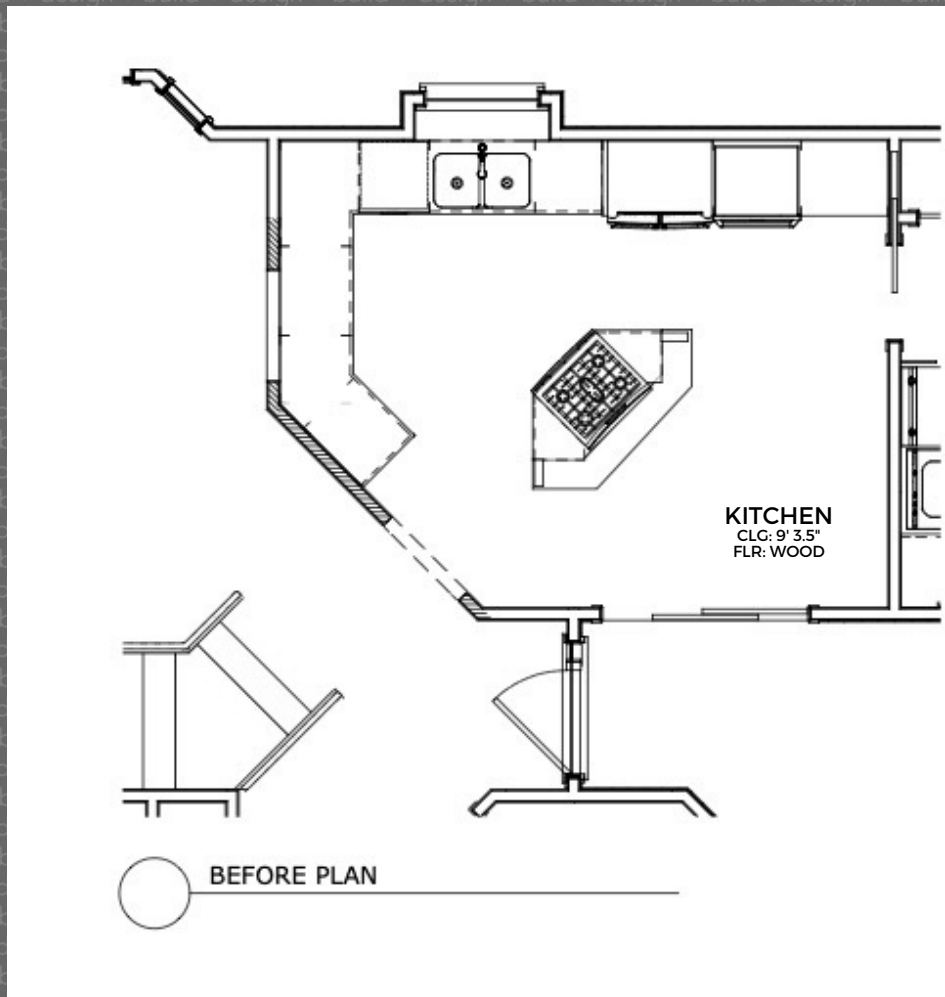


Opening the kitchen required the L-shape perimeter of the kitchen to be flipped, now locating the paneled fridge, pantry, and coffee center/small appliance storage on the north wall. The sink and dishwasher stayed centered on the box-bay window, while the cooktop moved from the island to the perimeter next to the wall ovens. This flip allowed for an extra-large (130" x 44") island to become the centerpiece with roomy seating for four, an abundance of storage, and an unencumbered countertop for preparation, serving, etc.

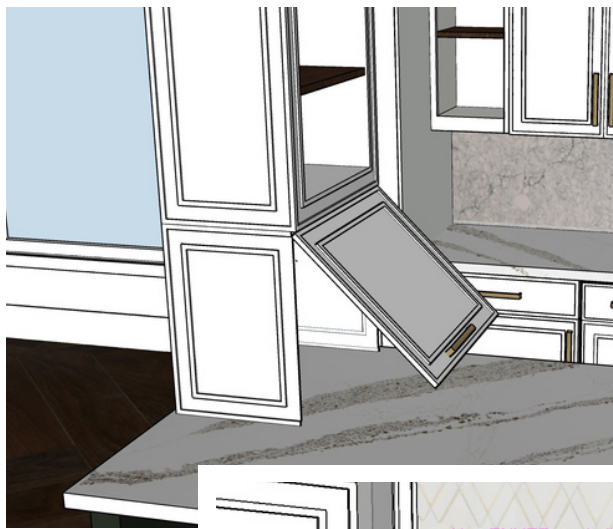
The custom cabinetry throughout features double-banded doors and drawers, pull-outs, inserts, pocket doors, and specialized storage. Warm white full-height cabinets are topped by a unique 3-part vertical crown which restates the rich, dark oak of the floors. A custom range hood incorporates all the cabinetry details as well. The countertops have subtle movement, a calming respite from the dynamic patterns and contrast of the full-height tile backsplash. Matte black pendant lighting with gold interiors tie in with the brushed brass hardware that punctuates the cabinet doors and drawers.

The homeowners are amazed at how much light now comes into the kitchen. The high windows of the living space flood the room with light. General lighting on the ceiling and LED under-cabinet task lighting, all dimmable, ensure that even at night this kitchen has ideal illumination. This kitchen is exactly the fabulous, functional space our clients desired. They have the open, bright, communal kitchen of their dreams with tons of storage space, the latest appliances, and room for family and friends. Most importantly, it has brought them daily delight in their new home!

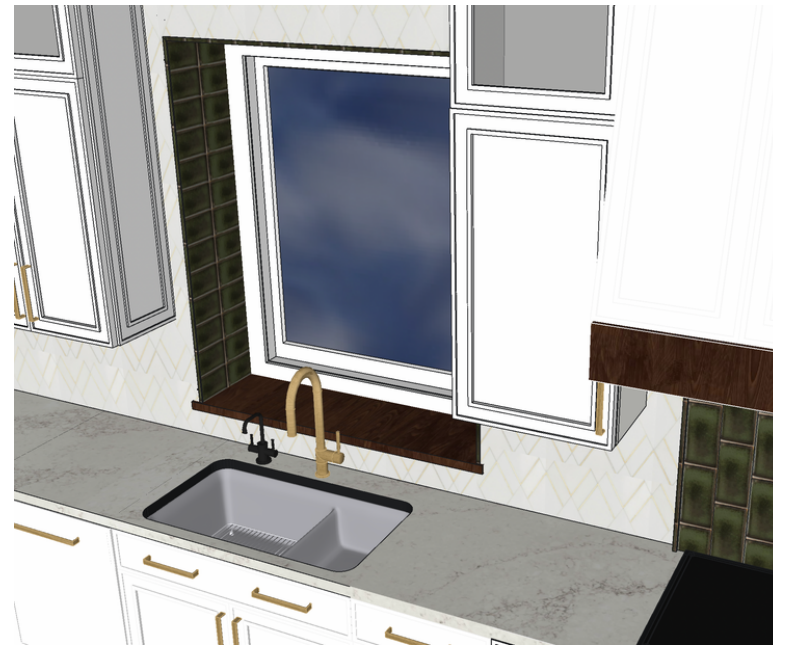
Plan Views



3D Views



3-D modeling is instrumental in assisting the homeowners with visualization of final functions and finishes. Although also helpful in the field, 3-D renderings cannot take the place of one-on-one interaction and collaboration between the project designers and artisans/trade partners on site to ensure all design details are coming together flawlessly.

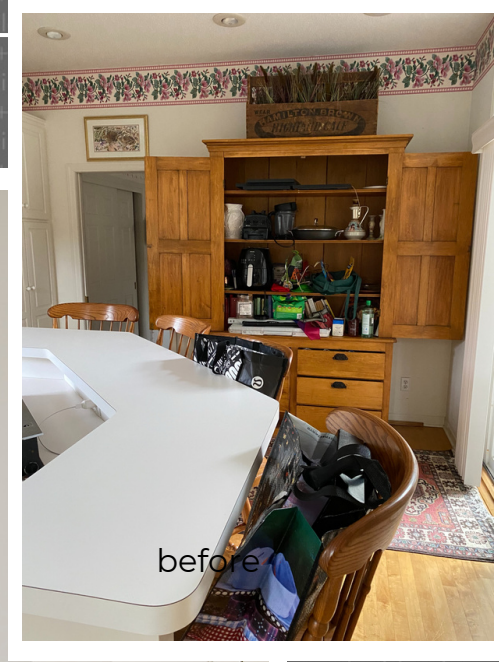


Use ENVER or similar simplified texture as Field Tile - has subtle brass accents

inset

Use dk green Kohler tiles inset at range hood and also in window return

before/after



before/after



before/after



after



before

before/after



after



before

before/after

after



before



Client Objective

1

1. Open the kitchen to the rest of the main floor allowing for food preparation and clean up to be more communal and connected.

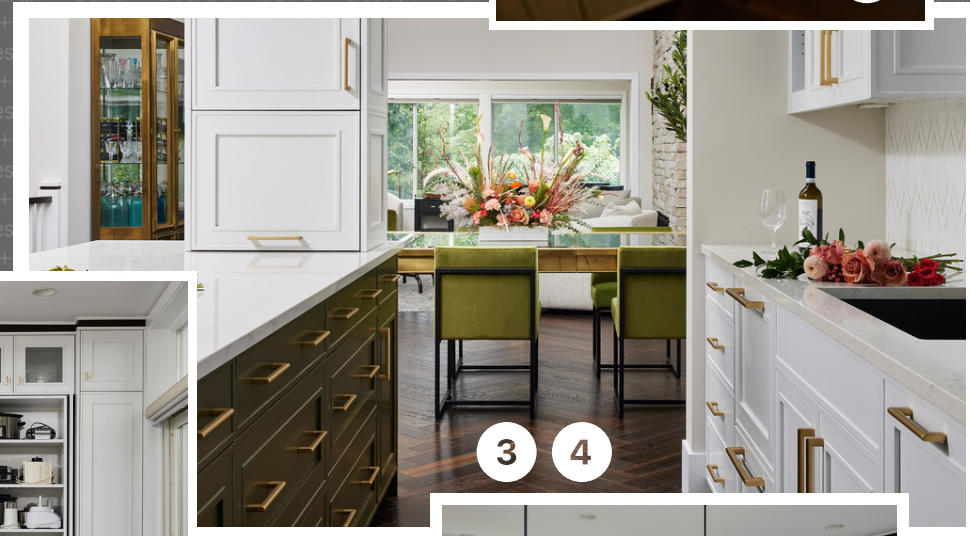
2. Provide plentiful, accessible, and specific storage solutions for dishware, small appliances, and pantry items.

3. Create work spaces for more than one cook and seating for other family members and guests.

4. Update finishes from “country kitchen” to “bitchin’ kitchen”.

Tie the kitchen in aesthetically to the surrounding spaces.

5. Enhance functionality - perimeter of up-to-date appliances, clean extra-large center island with storage & seating



Functionality

1. Ample counterspace and well-placed work zones from perimeter to island



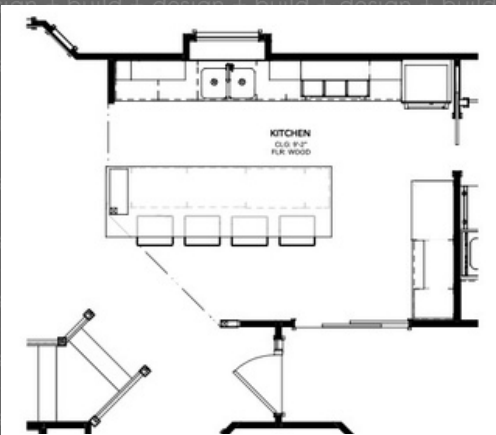
2. An extra-long island with abundant storage serves multiple functions - food preparation, guest seating, casual eat-in dining, buffet service, and more.



3. Specialized storage: Pantry with roll-outs, small appliance storage & coffee brewing space, drawers for cookware, dishware, spices, cutlery, and linens, and accessible island-top storage for daily use items.



4. Circulation can come through work side for daily use yet be routed to the other side of the island to keep the the work area free from interruption.



Aesthetics

2

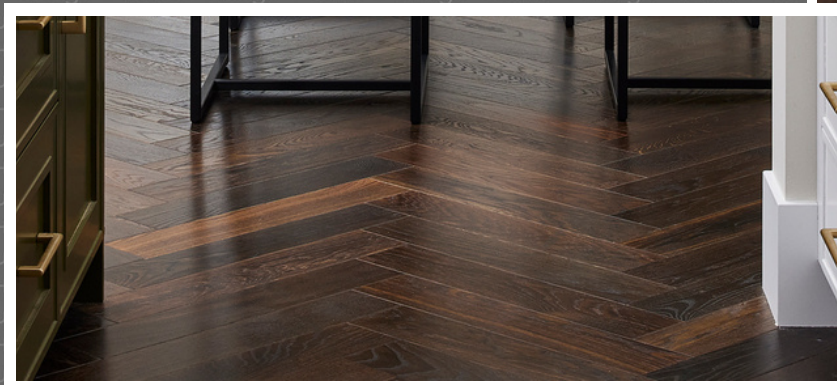
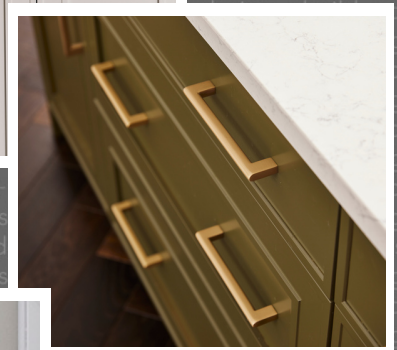
1. A warm white perimeter surrounding an intoxicating island of loden green is set upon a field of dark English Oak flooring in a herringbone pattern.

2. Dark oak details are incorporated above in the window sill, range hood accent, and a custom two-tone crown at the ceiling.

3. Tile backsplash features a diamond pattern of white porcelain, Thassos marble, and brass with a lush loden textured subway tile behind the cooktop and lining the box bay window at the sink.

4. Brushed brass & matte black finishes bring an elegant emphasis to the cabinet hardware, plumbing and lighting fixtures.

5. A touch of glass adds depth and sparkle to the space.



Craftsmanship

1. Hidden craftsmanship is still vital to the success of a project. Precision location of the required structural post, partially-recessed beams to carry the roof and ceiling structure, and ceiling furring to match the that beam height create a 'natural' transition from the kitchen to living areas.

2. Complex tile and flooring installations in precise patterns take an expert level of skill and concentration on the craft.

3. Exquisite custom cabinetry craftsmanship is seen throughout this kitchen. Tight tolerances, crisp details, tricky alignments, precision finishing, and coordination of functions and adjacencies are all executed to the utmost degree.



1



1



2

3



2

Innovation

1. The challenge of opening the kitchen to the adjacent living spaces also led us to develop this innovative solution combining the functions of a cabinet, the necessary structural support, and the visual beauty and strength to the end of the island.

2. To draw the richness of the dark English Oak flooring through the design, a custom 3-part crown was designed. It features a wide oak center with warm white top and bottom bands bringing a cap of contrast and detail to the ceiling plane.

3. The rich, loden tile inspired the island color, yet it is used sparingly to line the sides and top of the box bay window and then anchor the cooktop/range hood connection. The remainder of the backsplash area is covered counter to ceiling in a fresh white and brass field of angular texture.



3



2



3



1

Life happens in the kitchen... Bon Appetit!

