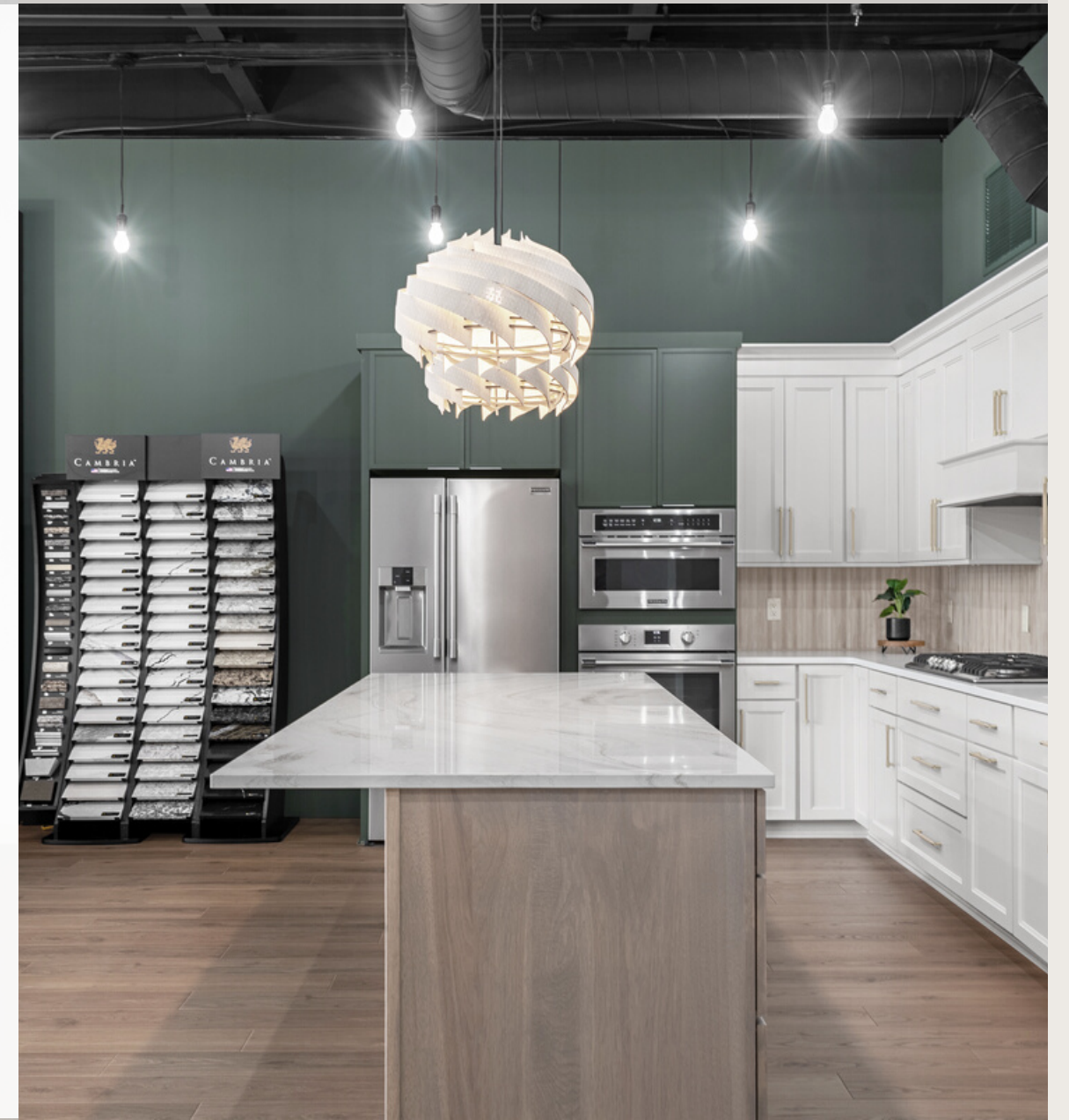


# OFFICE REVIVAL

NARI MINNESOTA  
2023 COTY AWARDS

CATEGORY: COMMERCIAL INTERIOR







# About

---

Our goal with this modern office remodel was to create an environment that fosters creativity, reflects expert craftsmanship, and inspires clients to dream big. This project included framing out new walls and the addition of a 3/4 bathroom, full kitchen, kitchenette and open concept office. Exemplary craftsmanship and higher end finishes and fixtures were used throughout. Three different door styles, four different cabinetry lines, and four different Cambria designs and edge profiles were used throughout to illustrate firsthand a variety of design possibilities. An Art TV does double-duty for client presentations as well as to showcase beautiful artworks. This once empty space now seamlessly blends modern aesthetics with technology and encourages clients to perhaps experiment and think outside the box for their own projects.





## ORIGINAL DETAILS

---

This commercial space was last used as a dent repair garage. The floor and walls were damaged and in a state of disarray.

The bathroom, while functional, was simply unusable by clients.

A mixture of exposed ceilings as well as drop down panels

Drywall was missing in some areas, exterior lighting wasn't functioning, and interior lighting was sparse and fluorescent.

Plumbing only existed in the bathroom and needed to be added for the new designer kitchen, kitchenette and garage spaces.

The space, while a blank canvas, lacked any walls to separate the areas of the unit. The large open space was unfunctional. There was no distinct separation.

A utility room sat in the middle of the space which wasn't necessary or aesthetically pleasing.



# The Revival

Walls were erected to the high ceilings to create three distinct spaces; the customer design studio, employee office space with kitchenette, and a bay for work trucks and tools.

A new kitchen was designed and built to include two different cabinet lines, functioning high-end energy efficient appliances and functional plumbing fixtures, and a beautiful ceramic backsplash that resembled hand-crafted etched wood.

Beautiful Cambria quartz countertops in four different designs were used throughout, including a statement wall shower panel.

Floors were leveled and new warm luxury vinyl plank flooring was installed throughout the space.

Expert carpentry skills were leveraged to create a free-standing accent wall, complete with custom millwork including a traditional wainscot wall, that now displays a high-tech Art TV.







# The Revival

Decorative and lighted wall niches were built in the new client lounge to display artwork, decor and awards.

A new ADA compliant bathroom was built, complete with tiled walls, functioning tiled shower, and a statement Cambria shower panel which requires no grout or sealant, creating a spa-like experience.

A four-person office space was created complete with semi-custom cabinets and white-washed butcher block desktops.

An employee kitchenette with black Cambria countertops and a gold backsplash add a bit of drama.



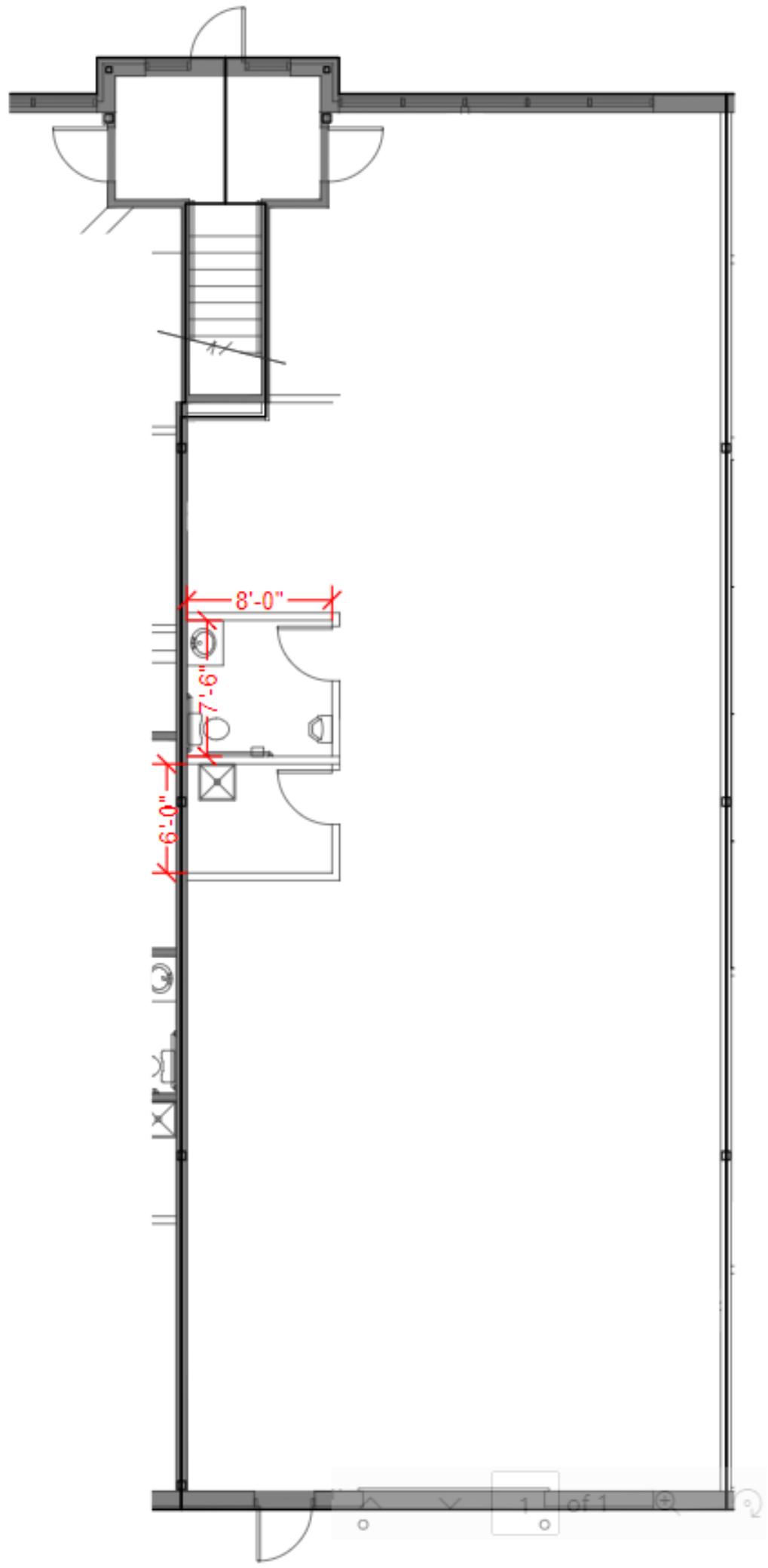
# Aesthetic Highlights

- Cambria quartz countertops
- Beautiful semi-custom birch and maple cabinetry
- Warm luxury vinyl plank flooring
- Fully functioning kitchen with professional high-end appliances
- Designer lighting
- Oversized island to be used for client consultations
- High ceilings
- Commissioned custom solid wood maple conference table
- Solid wood doors and trim
- Exposed ductwork and cables finished in matte black
- Industrial functional lighting system throughout
- Video integrated security system
- Lighted niches for displaying decor
- Trim was enameled to match wall color to create the illusion of an elongated wall



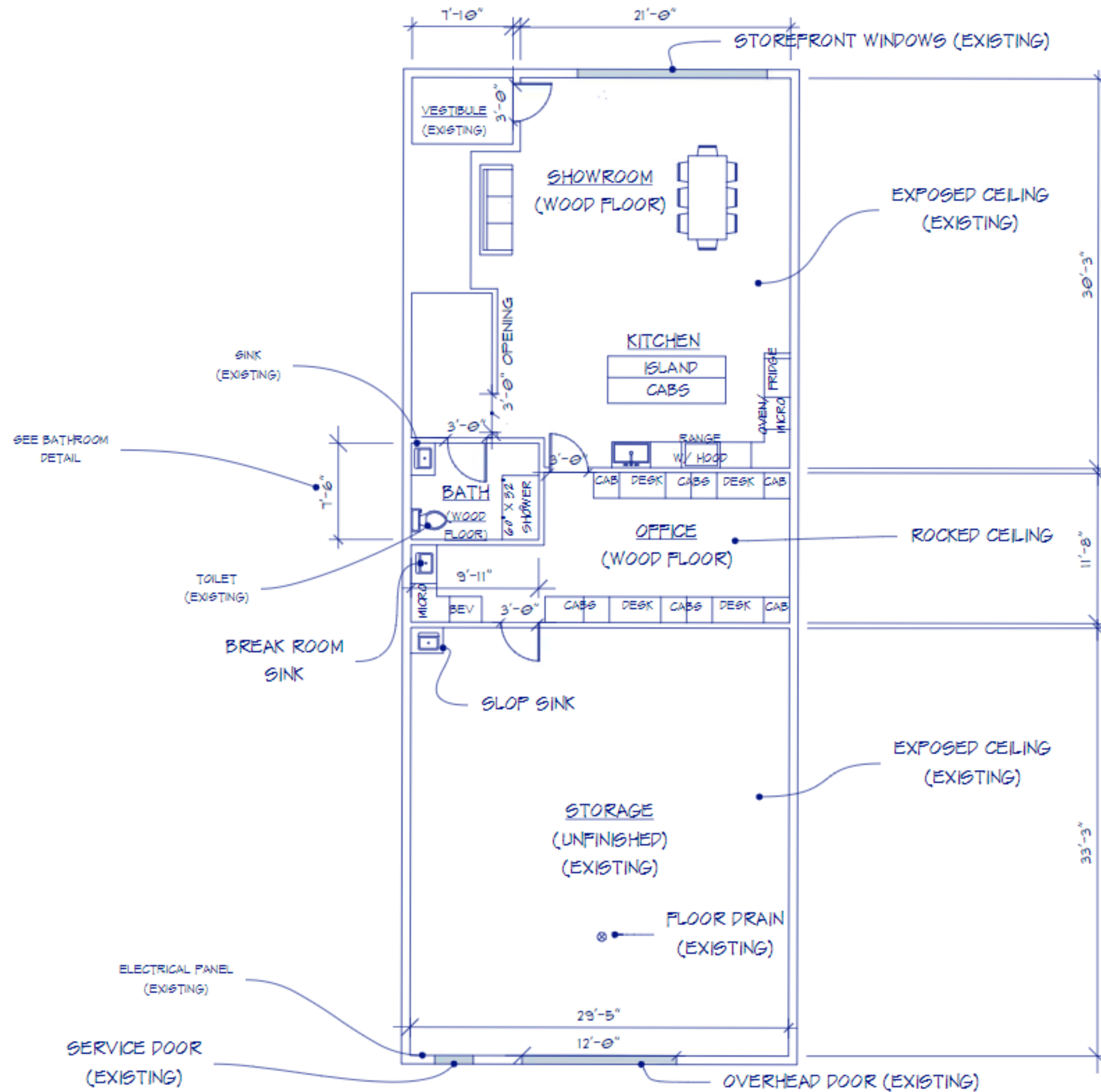


# BEFORE FLOOR PLAN





# AFTER FLOOR PLAN





# 3D RENDERINGS





# 3D RENDERINGS





# BEFORE PICTURES





# BEFORE PICTURES





# AFTER PICTURES





# AFTER PICTURES





# AFTER PICTURES





# Before & After Side by Side





# Before & After Side by Side





# Before & After Side by Side





# Before & After Side by Side

