

ST. PAUL



LOWRY LOFT

NARI MINNESOTA
2023 COTY AWARDS

CATEGORY: RESIDENTIAL INTERIOR
\$100,000-\$250,000

HISTORY

Originally named the Lowry Medical Arts Building and home to doctors and dentists, this building in St. Paul, Minnesota was completed in 1911 by Thomas Lowry. Renovated into lofts in 2004, the building still hosts the original structural concrete floors throughout.

Our remodel was completed in 2023.



ABOUT

This loft project in downtown St. Paul, MN challenged us to celebrate and cherish the historical elements of this over 100-year-old space, while creating a space that could thrive amidst the ever-changing landscape of modern living. To make the space function more efficiently, a pony wall was removed, the entry/foyer was opened to allow for passage to a newly framed bedroom, and a wall was removed to open the living/dining space. Aesthetics were updated to honor the time period in which the building was built. This included new cabinetry, countertops, plumbing fixtures, ambient lighting and a warm and inviting color palette throughout. The Minnesota Historical Society was consulted about using early images of the building that were framed and hung throughout the space to be cherished by future generations.



CLIENT NEEDS

01

Structural: A pony wall was removed to make room for an oversized island, the entry/foyer was opened to allow for passage to a newly framed bedroom, and a wall was removed to open the living/dining space.

02

Aesthetics: Updated aesthetics yet preservation of the time period in which the building was built. Glass doors were replaced with custom solid doors creating privacy in the new bedrooms.

03

Function: A second kitchen was removed to create a new primary suite area. A new kitchen was designed and built. The oversized island now boasts seven stools for seating.



THE TRANSFORMATION

01

A new kitchen was designed and built for better flow and accessibility

03

Second kitchen was removed to create a new primary suite space

05

A new dry bar space was added off the new dining room space equipped with beverage coolers

02

Entry foyer was opened up

04

A new dining room space with views overlooking the city replaced a vacant space

06

The original concrete floors were preserved throughout



AESTHETICS



- Beautiful custom birch cabinetry
- Professional high-end appliances
- Polished neutral quartz countertop
- Designer lighting
- Glazed ceramic tile backsplash



PROJECT CHALLENGES

Honor the historical elements of this over 100-year-old space, while creating a space that could thrive amidst the ever-changing landscape of modern living.



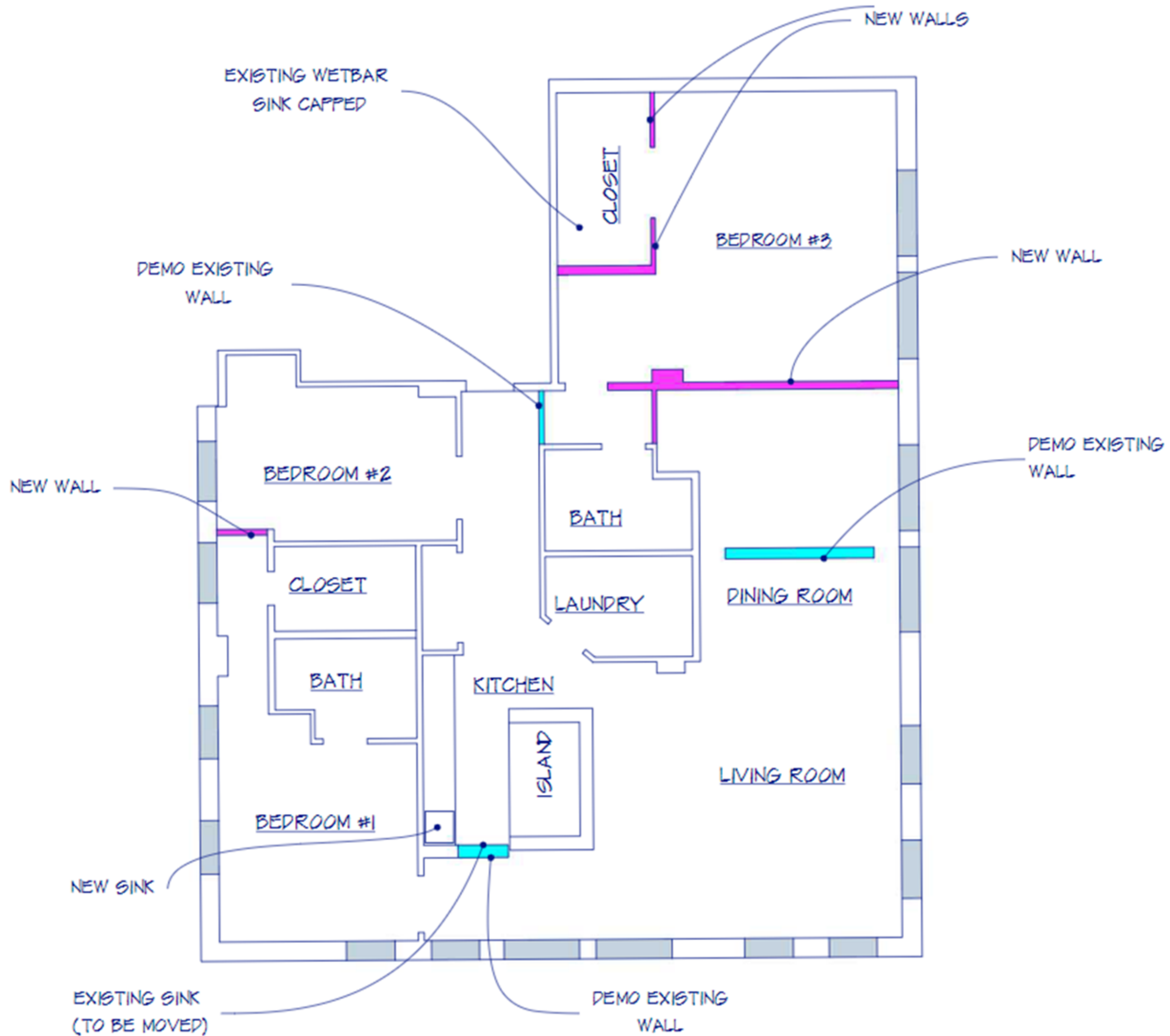
Preserve the original and structural concrete floors throughout.



Add and remove walls to improve the overall efficiency, function and aesthetics of the space.



FLOORPLAN CHANGES



BEFORE PICTURES



BEFORE PICTURES



AFTER PICTURES



AFTER PICTURES



Before & After Side by Side



Before & After Side by Side



Before & After Side by Side



Before & After Side by Side

