

NARI MINNESOTA - 2023 COTY AWARDS

PROJECT: LAKESIDE

CATEGORY: RESIDENTIAL KITCHEN OVER \$200K

The gorgeously appointed lakeside classic kitchen boasts abundant views and sits on the shores of Crystal Lake in Burnsville. The redesigned kitchen is the true heart of this lakeside home. The homeowners purchased the home knowing that every square inch of the kitchen would be remodeled.

It was important to the homeowners to create a space that would fit their whole family including extended family and grandkids. Days filled with cooking and hanging out together in the space topped their wish list. It was important that the design take full advantage of the lake views and pay homage to the setting using a coastal-inspired design.

An oversized quarter sawn white oak island anchors the space and is topped with Cambria Britannica Warm quartz countertops. It is large enough for the extended family and grandkids to congregate around

A walk-in pantry, which sits behind the kitchen in an efficiently placed alcove, is a favorite of the homeowners. Cabinetry is clad in Water's Edge – a luscious seaside blue. The artistic backsplash, originally a 4' x 4' mural, is reformatted to fit the pantry and works well in the small space.

With cabinet front doors, a full-size Monogram Column refrigerator and freezer blends seamlessly into the cabinet run behind the island. Adjacent to the fridge, a neutral toned warm-gray subway tile covers the entire wall that houses the range.

The finished kitchen project is a timeless masterpiece. It gives the homeowners and their extended family a functional place to cook, relax and be together!



BEFORE PHOTOS



CLIENT REQUESTS AND BEFORE SITE PLAN

-It was important to the homeowners to create a space that would fit their whole family including extended family and grandkids. Days filled with cooking and hanging out together in the space topped their wish list.

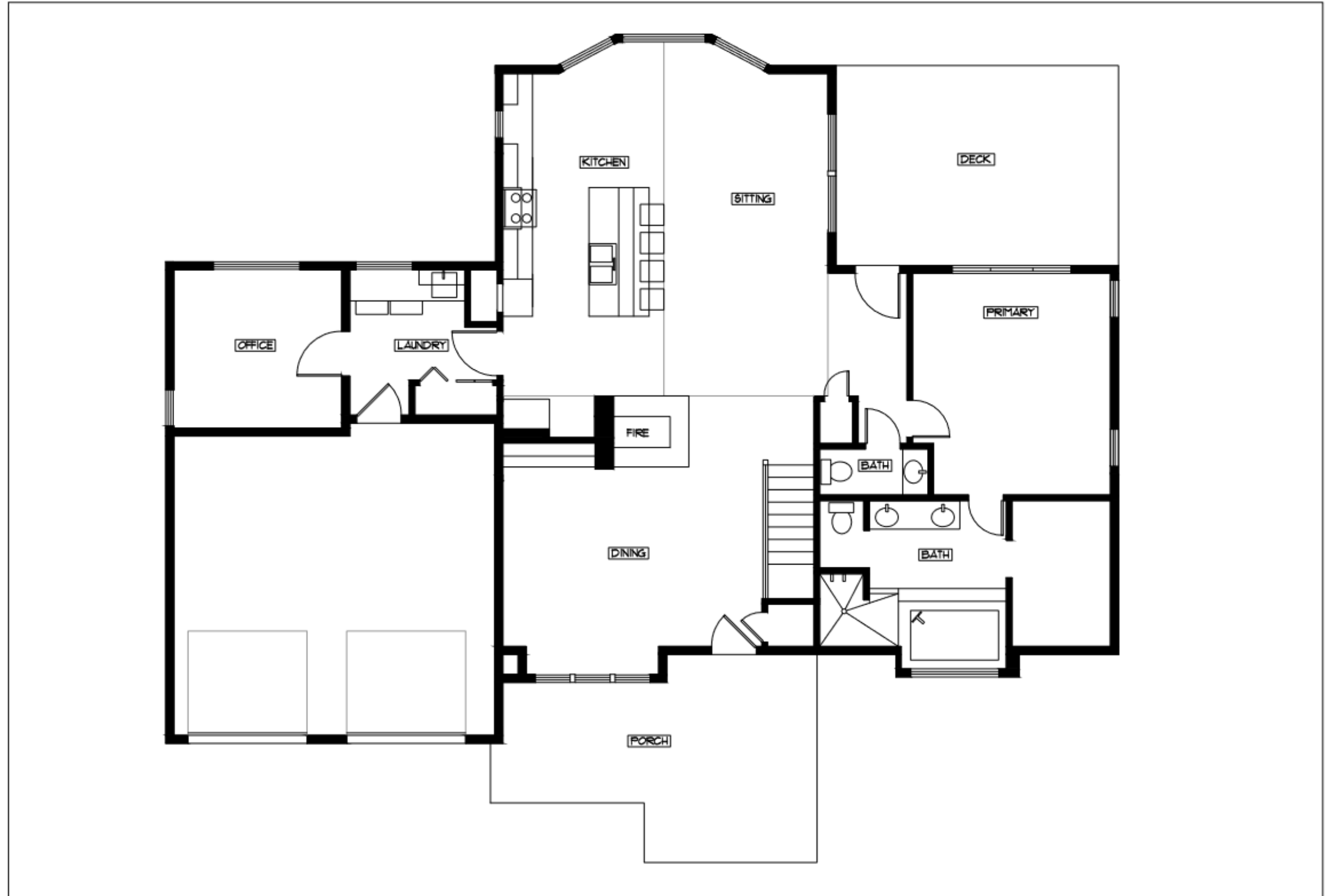
-Incorporate a coastal design aesthetic to pay homage to the lakefront setting.

-Re-orient the space to take advantage of the lake views.

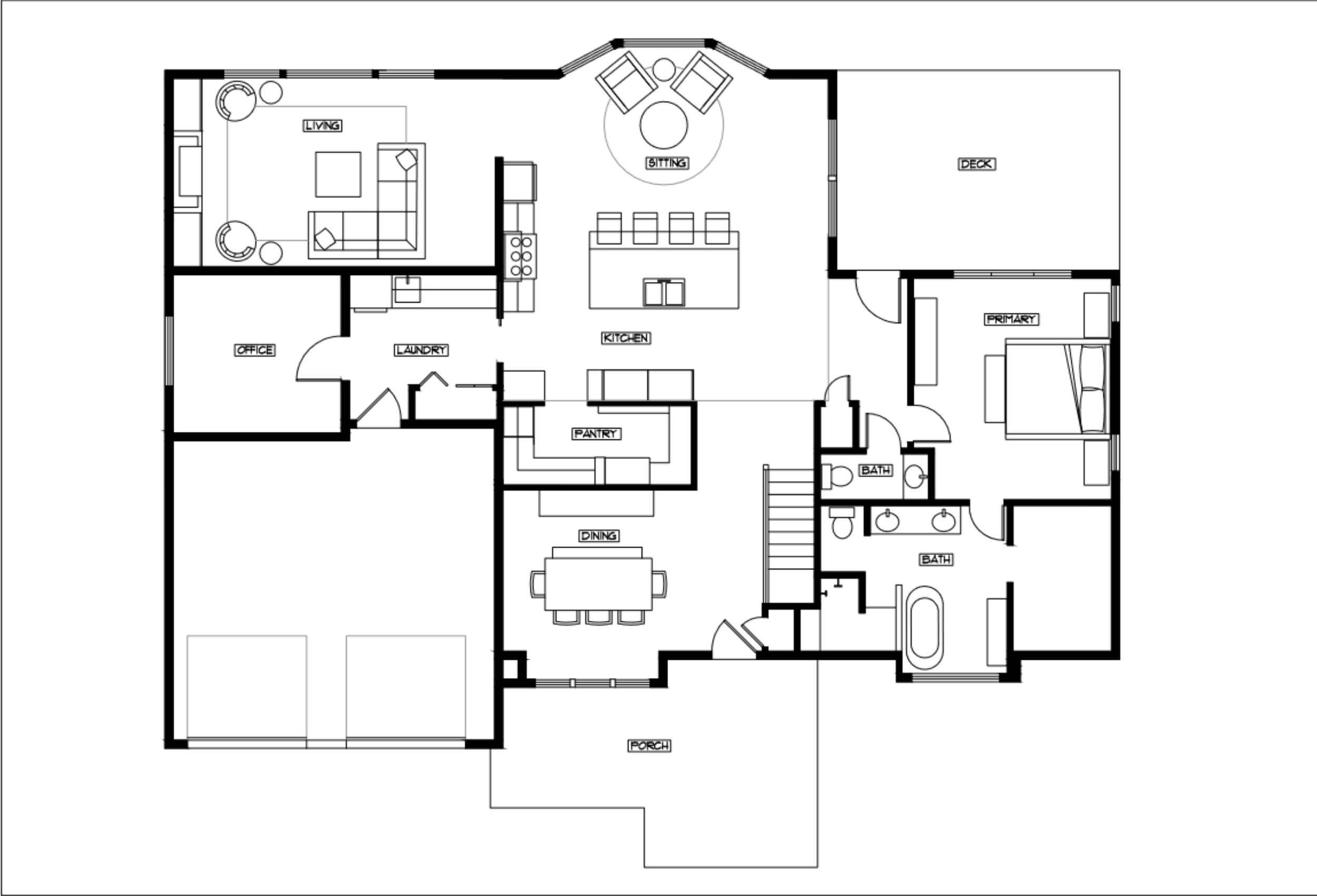
-Provide plentiful storage throughout the space.

-Add a functional pantry to house spices, appliances, a beverage fridge and overflow items.

-Remove the large 3-sided fireplace between the existing dining and Kitchen area.



AFTER SITE PLAN



ELEVATION DETAILS



BEFORE AND AFTER



LAKESIDE - RESIDENTIAL KITCHEN OVER \$200K - 2023 NARI MN COTY

BEFORE AND AFTER



LAKESIDE - RESIDENTIAL KITCHEN OVER \$200K - 2023 NARI MN COTY

PROJECT CHALLENGES

Layout

The layout of the original kitchen was not oriented toward the lake. In addition, the existing size of the kitchen didn't allow for seating or a large island.

Mechanicals

Mechanicals were tricky as the original kitchen housed an unwanted fireplace and its venting, along with low voltage wires, complicated the remodel, nearly eliminating the pantry.



FUNCTIONALITY

-An oversized 10 x 5-foot quarter sawn white oak island anchors the space and is topped with Cambria Britannica Warm quartz countertops. It is large enough for the extended family and grandkids to congregate around.

-A full-size Monogram Column refrigerator and freezer with cabinet front doors blend seamlessly into the cabinet run behind the island.

-Adjacent to the fridge, a neutral toned warm-taupe subway tile covers the entire wall that houses the range.

-Large pots and pans drawers with a hidden pullout for lids increase the storage and functionality in this space.

-A white detailed hood, range and stacked double ovens make entertaining a breeze.

-The island has hidden 24" deep storage on the stool side, featuring push latch entry.



FUNCTIONALITY - PANTRY

-A walk-in pantry sits behind the kitchen in an efficiently placed alcove .

-It includes narrow open shelving to house pantry staples, a spice drawer, appliance storage and a beverage fridge which is a favorite with the grandkids.



AESTHETICS

-A coastal design aesthetic of crisp whites and warm neutrals is present throughout the kitchen.

-The oversized quarter sawn white oak island anchors the space and is topped with Cambria Britannica Warm quartz countertops.

-An enameled white pine ceiling hangs above the island and is an understated showstopper. The line of the ceiling follows a subtle stair-stepped vault in the room offering an unexpected detail.

-Large-scale, burnished gold lantern-style pendants hang from the ceiling.

-The walk-in pantry cabinetry is clad in Water's Edge, a luscious seaside blue. The artistic backsplash, originally a 4' x 4' mural, is reformatted to fit the pantry and works well in the small space.

-Cabinet front doors hide the full-size Monogram Column refrigerator and freezer helping it to blend seamlessly into the cabinet run behind the island. Gorgeous, understated and highly functional!

-A neutral toned warm-taupe subway tile covers the entire wall that houses the range.

-The white detailed hood blends intentionally into the run of cabinetry that hangs above the range and stacked double ovens reside next door to make entertaining a breeze.

