



RESIDENTIAL BATH OVER \$150K

BACKGROUND & CLIENT NEEDS

With the help of our architect & interior designer this awkward, the previous too-small bathroom space was reconfigured and combined with an adjoining office to provide a vastly improved master bathroom. Updating was a must to be consistent with the beauty of the remaining remodeled house.



CHALLENGES & SOLUTIONS

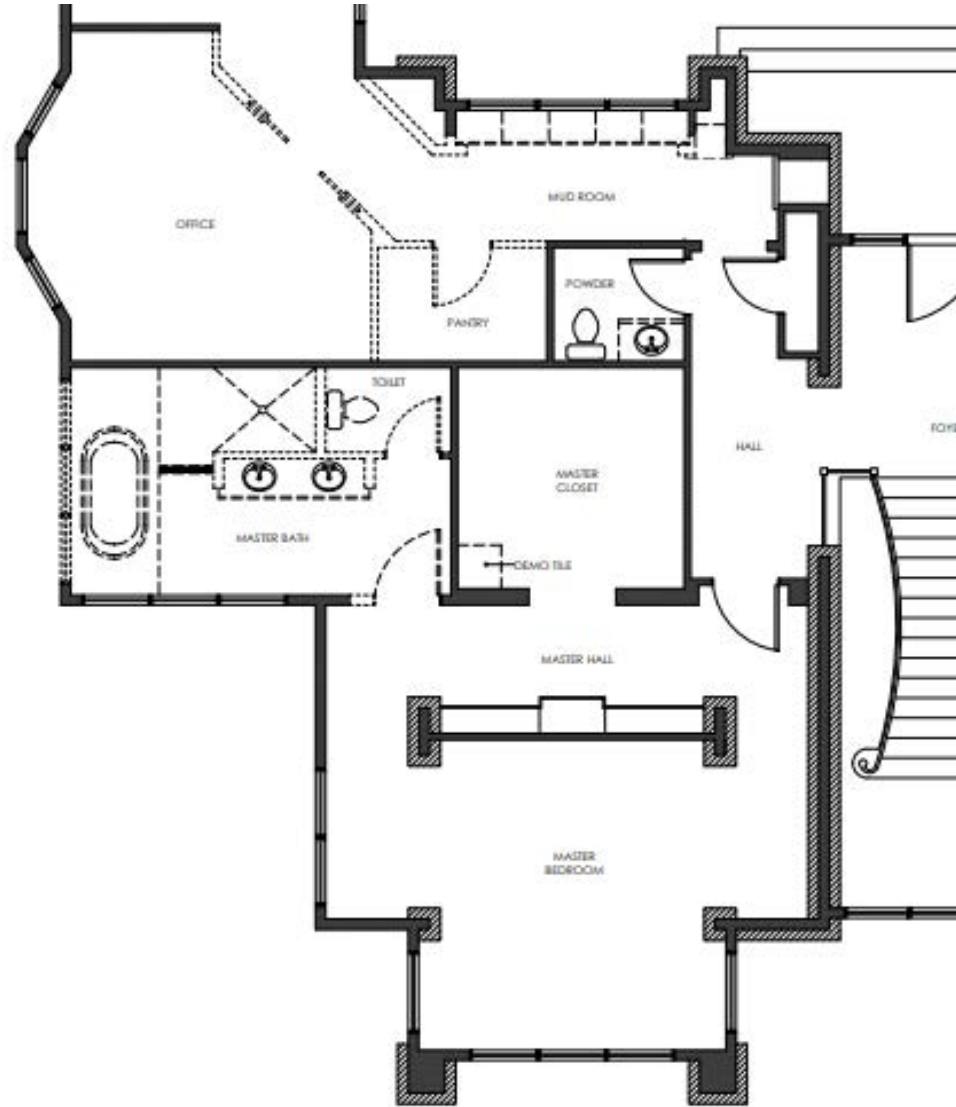
Challenges included reconfiguring radiant hydronic tubing zones to suit the new larger bathroom layout as well as ventilation changes and recessed LED medicine cabinets in the exterior wall. The jib doors with cabinet overlays were also challenging, but once completed, really created a seamless look between the cabinets and the two doors inside the bathroom.

Solutions:

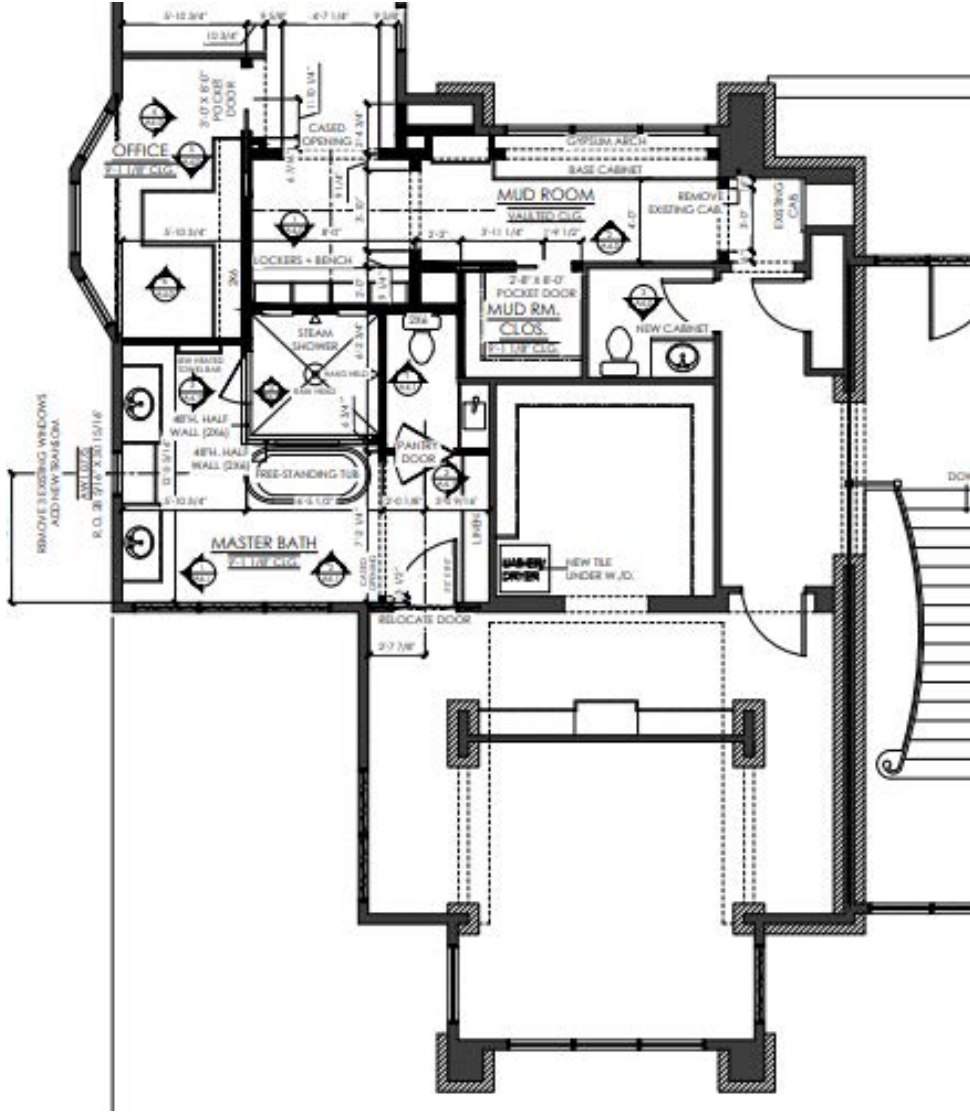
An adjoining study that was poorly utilized provided the space required while still offering a small office and some space for mudroom lockers. Additional windows, natural stone tile over heated floors, Cambria countertops and shower trims, custom cabinets, and flush-mounted jib doors with cabinet overlays all add up to create an intimate oasis.



BEFORE FLOOR PLAN



AFTER FLOOR PLAN



BEFORE PHOTOS



BEFORE PHOTOS continued



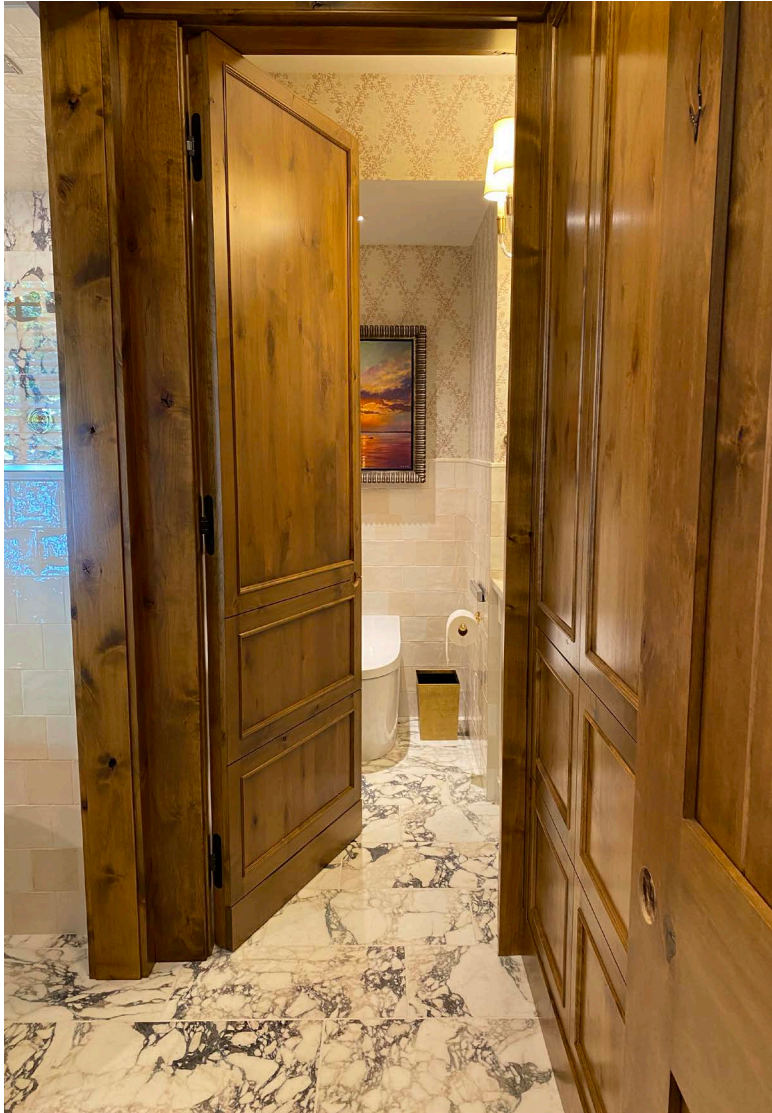
AFTER PHOTOS



AFTER PHOTOS continued



AFTER PHOTOS continued



CLIENT QUOTE

”

“...___assembled a great team of not only ___craftsmen, but also quality-driven subcontractors. We were an active part of the process in approving the subcontractors and reviewing the schedule, and ___did an excellent job of keeping the communication lines open and frequent during the process. ...we always felt in the loop and that decisions were made in a timely and effective manner. Our working relationship with ___and the subcontractors was great. ...We're very happy with the outcome and the quality of work. ___'s diligence, communication, and the quality of the people involved all made this large project a success.”

HOMEOWNER, BATHROOM OVER \$150K

“