

# NARI MINNESOTA – 2023 COTY AWARDS

PROJECT: Timeless Elegance

CATEGORY: Residential Kitchen: \$150K - \$200K

This kitchen was in need of a facelift as well as a shot of better function everywhere. The kitchen floorplan was difficult to work in and the seating was uncomfortable. A change to the footprint, available storage and updated finishes throughout was what this kitchen needed.



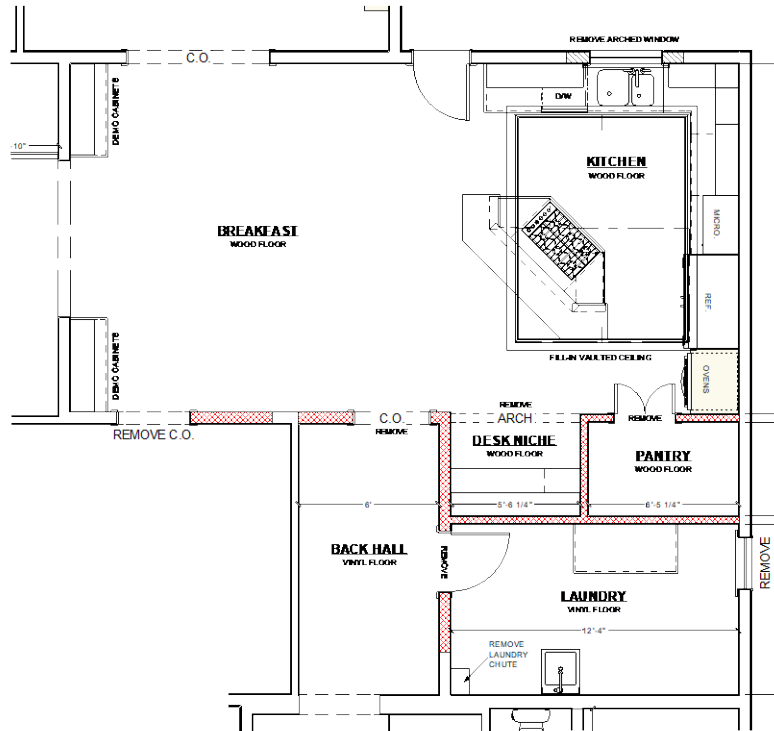
## CLIENT REQUESTS:

- Better floorplan for serious cooking
- More seating in the kitchen area
- Butler pantry
- More functional built-ins elsewhere on the main level

## CHALLENGES:

- Structural changes were required to accommodate the new floor plan
- Widening the doorway to the formal dining room
- Vault in the existing ceiling did not align with the new floor plan
- Inefficient storage in rear entry areas

# BEFORE FLOOR PLAN



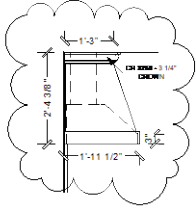
## BEFORE KITCHEN PLAN

SCALE: 1/4" = 1' - 0"

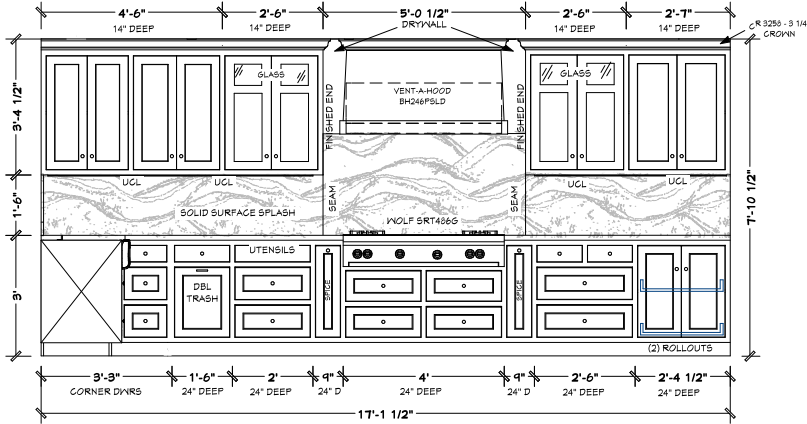
 = NEW WALLS



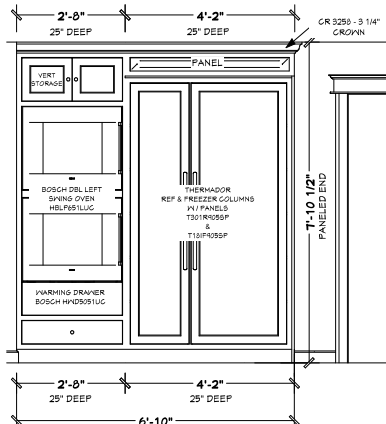
# ELEVATIONS



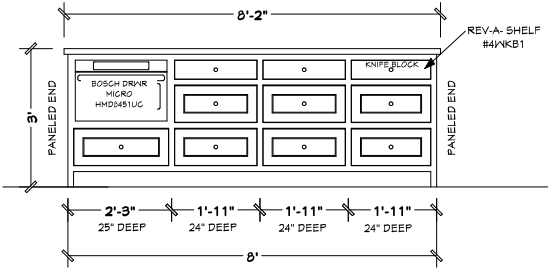
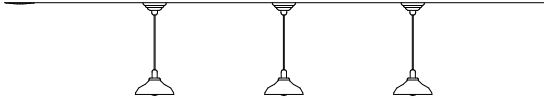
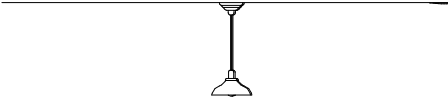
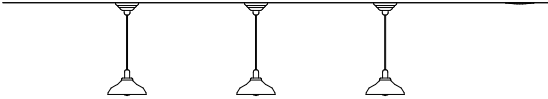
**HOOD DETAIL (CS1)**  
SCALE: 1/2" = 1'-0"



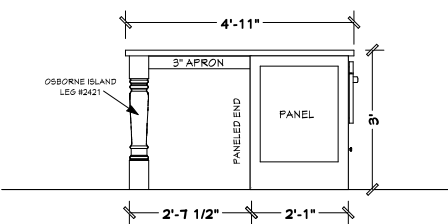
**COOKTOP WALL (E2)**  
SCALE: 1/2" = 1'-0"



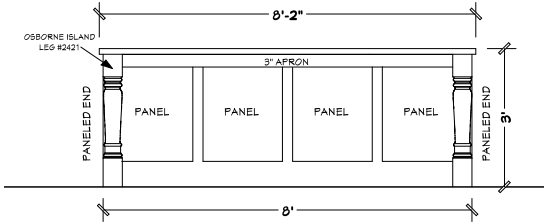
**OVEN/REF WALL (E3)**  
SCALE: 1/2" = 1'-0"



**ISLAND (E4)**  
SCALE: 1/2" = 1'-0"

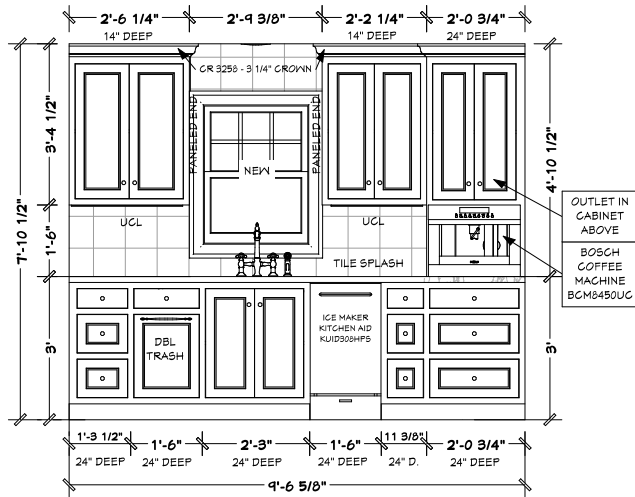


**ISLAND (E5)**  
SCALE: 1/2" = 1'-0"



**ISLAND (E6)**  
SCALE: 1/2" = 1'-0"

# ELEVATIONS



## PANTRY WALL (E8)

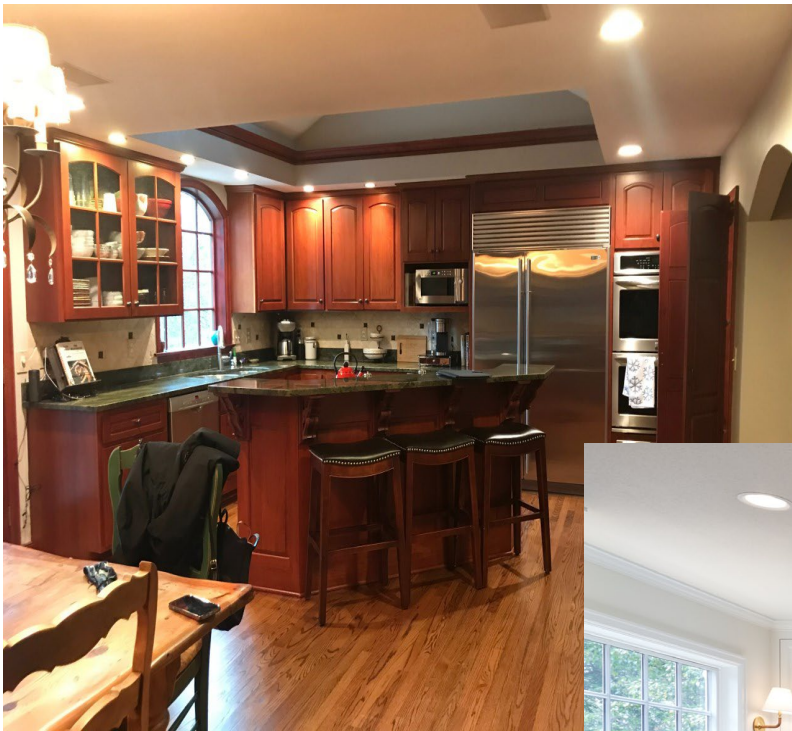
SCALE: 1/2" = 1'-0"



# BEFORE AND AFTER

## SOLUTION:

- A flush 1,700lb I-beam was installed and buried in the ceiling to allow for movement of walls and doorways – thus a wider footprint
- The vaulted ceiling was closed in allowing for clean ceiling and light fixtures
- A new wider window installed behind the sink



## BEFORE AND AFTER



### SOLUTION:

- Improved traffic flow in kitchen areas
- An island with better work surface and more comfortable seating
- Slab backsplash
- Flush ceiling with lots of lighting
- Access to the butler pantry





# BEFORE AND AFTER



## SOLUTION:

- A new wider window installed behind the sink
- The vaulted ceiling was closed in
- Wider walkways
- Drawers, Drawers and more Drawers for great access to storage





## BEFORE AND AFTER

### SOLUTION:

- Extra space was borrowed from the laundry room to allow for the new butler pantry
- A flush 1,700lb I-beam was installed and buried in the ceiling to allow for movement of walls and doorways





SUCCESS!

These homeowners now have an elegant, bright, and timeless space to enjoy for years to come!

2023 COTY Awards - Timeless Elegance