

NARI MINNESOTA – 2023 COTY AWARDS

PROJECT: Timeless Elegance

CATEGORY: Residential Interior: \$250K - \$500K

If you looked closely, this home had some challenges for the owner. The spaces on the main level were both tight and yet some were oversized. The workable kitchen space and available storage was slim. There was also the opportunity to better define the back entry of the home with a stronger design. All together, this home needed an update that would address these items and also provide the much needed fresh finishes throughout the space.



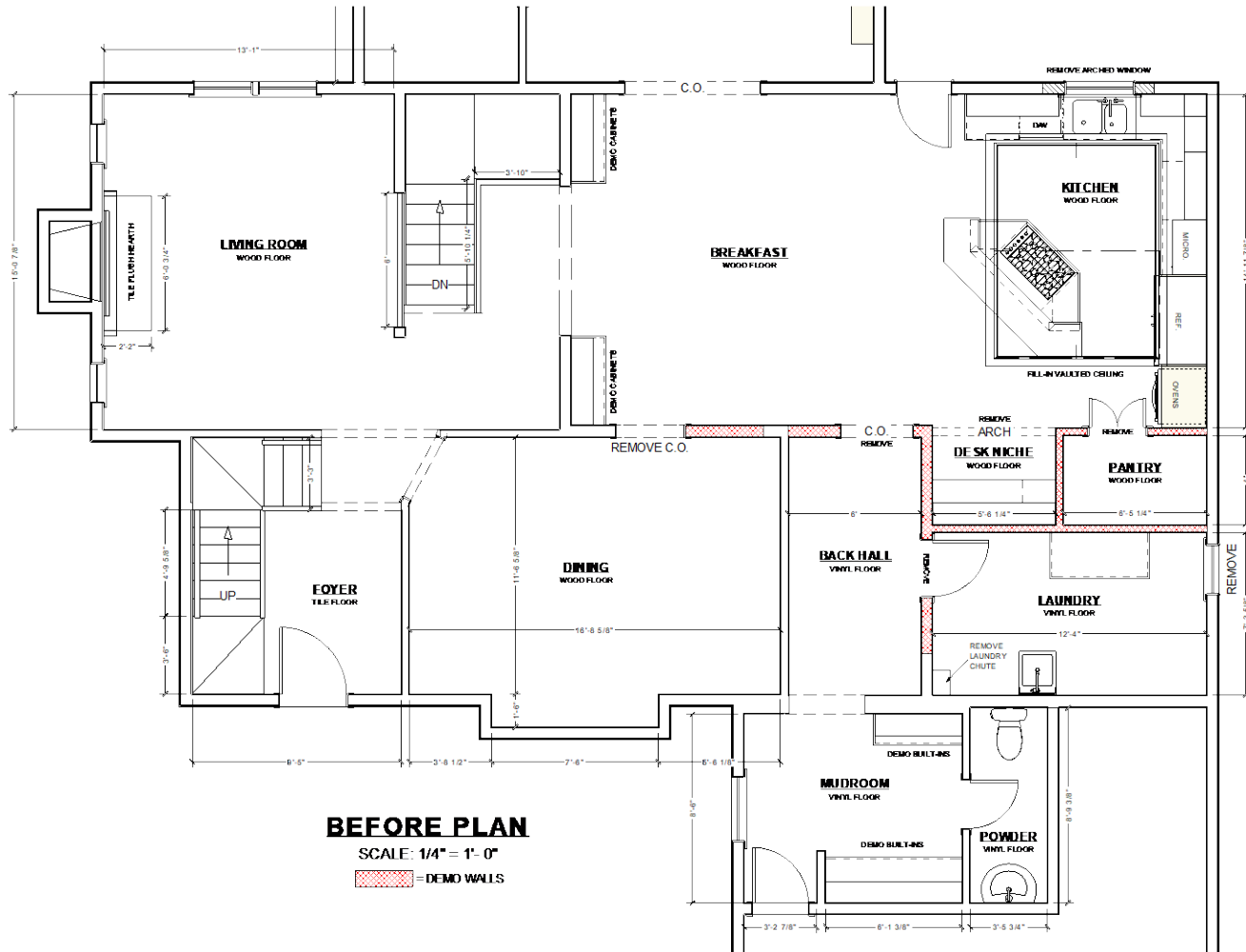
CLIENT REQUESTS:

- Better floorplan for serious cooking, entertainment, sightlines and to better use existing spaces
- More workable space and comfortable seating at the island
- Butler pantry that is an extension of the kitchen
- Cabinetry for great organization and access
- Eliminate round top window at the kitchen sink and unused desk area

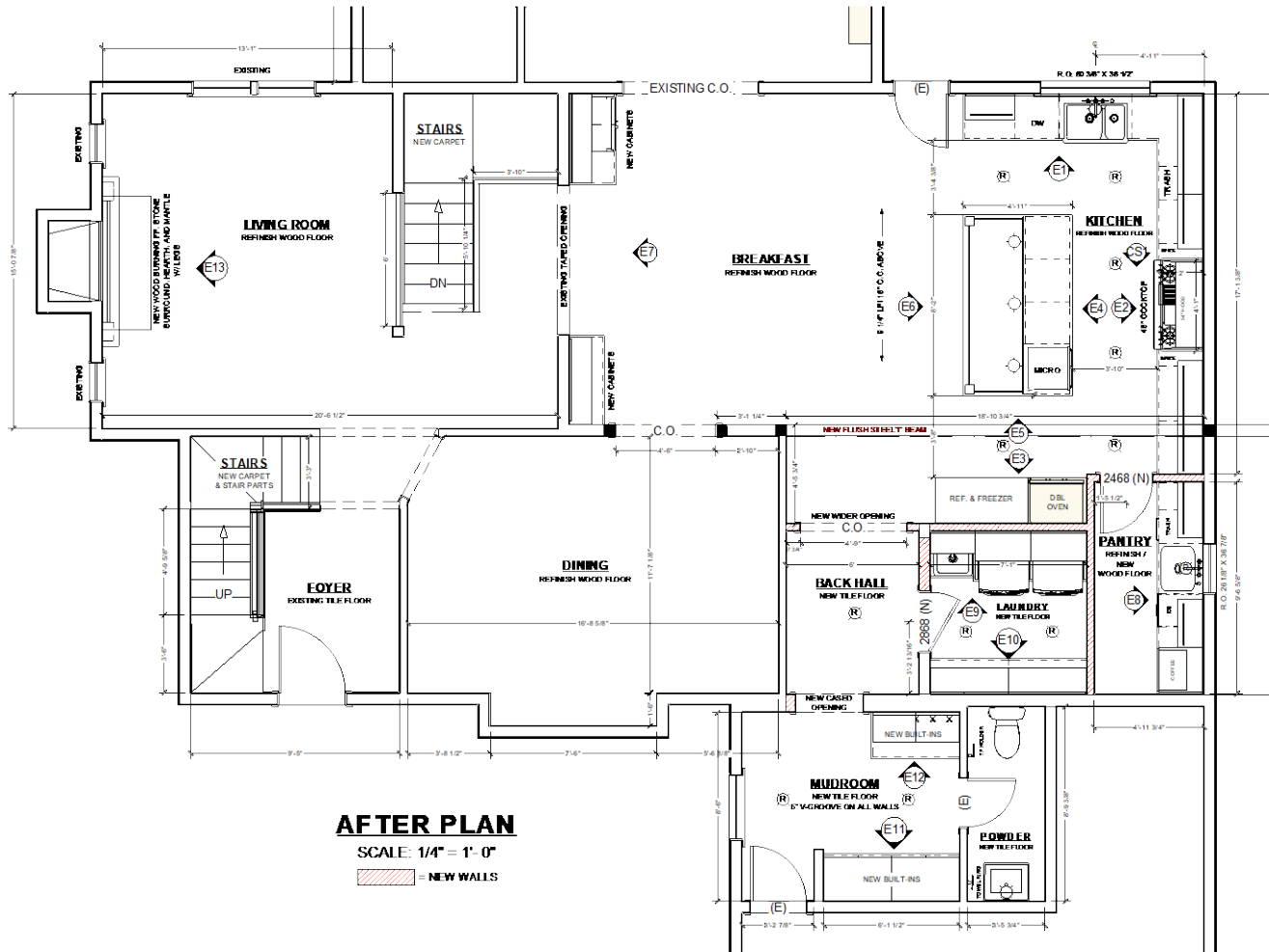
CHALLENGES:

- Structural changes were required to accommodate the new floor plan
- Vault in the existing ceiling did not align with the new floor plan and had a window in it

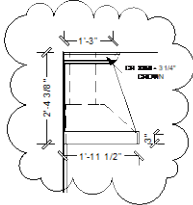
BEFORE FLOOR PLAN



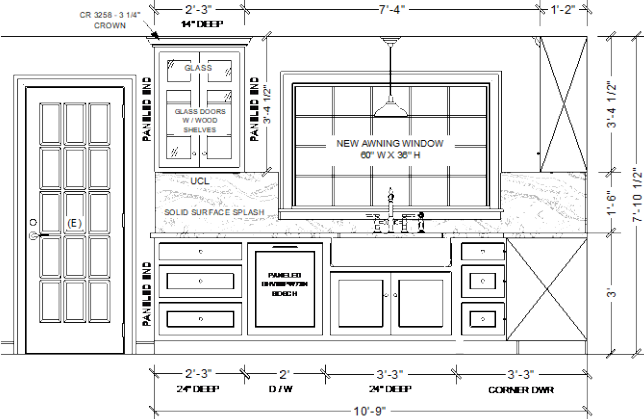
AFTER FLOOR PLAN



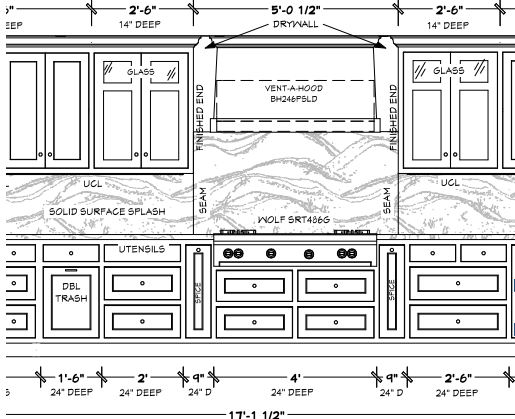
ELEVATIONS



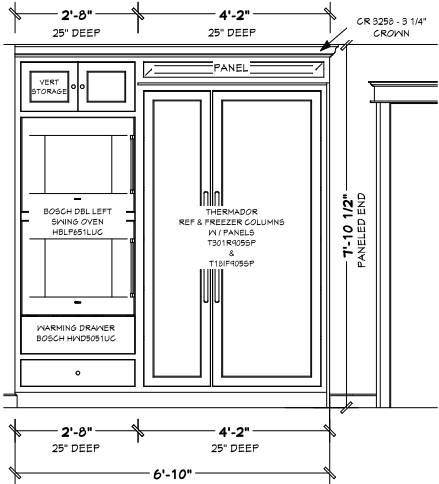
HOOD DETAIL (CS1)
SCALE: 1/2" = 1'0"



SINK WALL (E1)
SCALE: 1/2" = 1'-0"

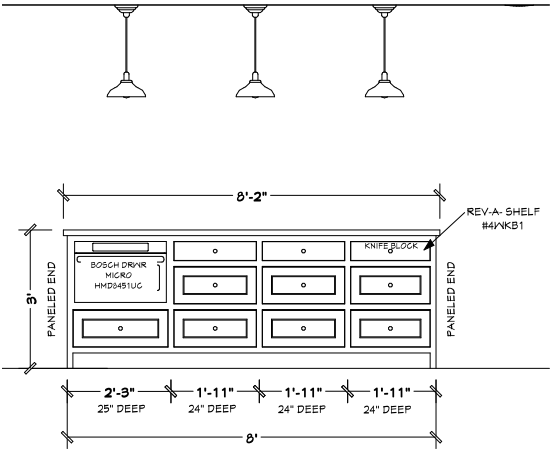


COOKTOP WALL (E2)
SCALE: 1/2" = 1'-0"

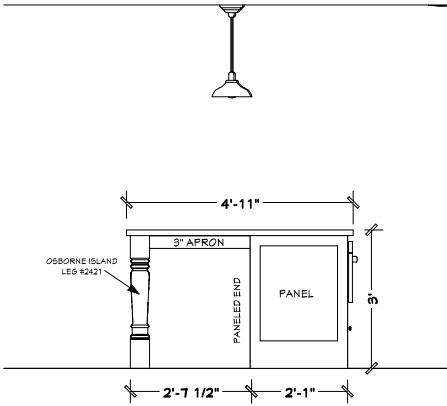


OVEN/REF WALL (E3)
SCALE: 1/2" = 1'-0"

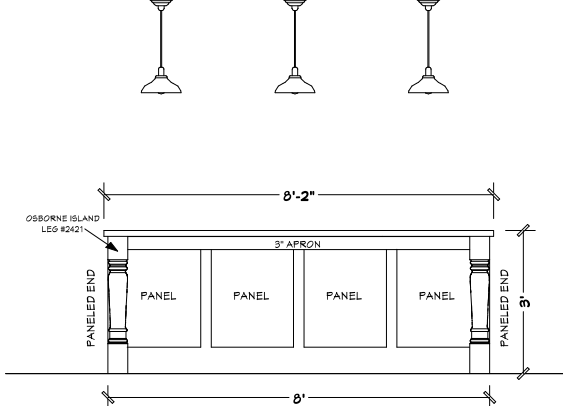
ELEVATIONS



ISLAND (E4)
SCALE: 1/2" = 1'-0"

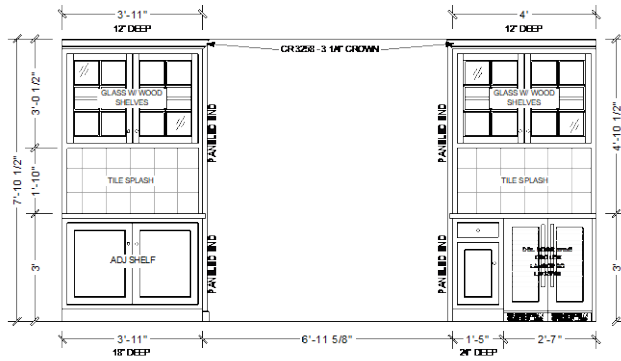


ISLAND (E5)
SCALE: 1/2" = 1'-0"

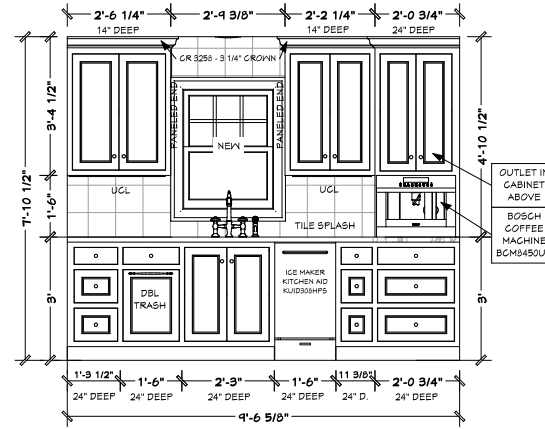


ISLAND (E6)
SCALE: 1/2" = 1'-0"

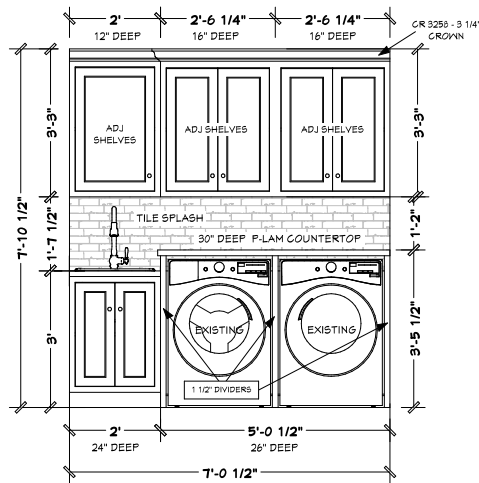
ELEVATIONS



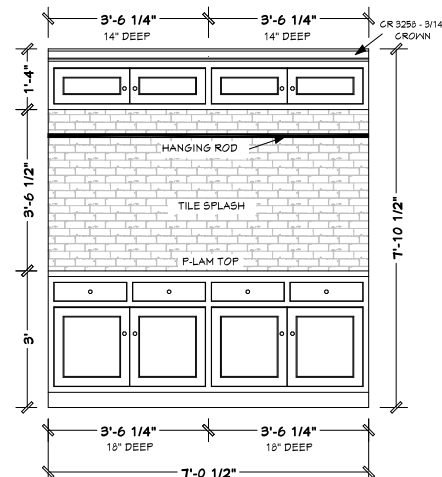
BREAKFAST BUILT-INS (E7)
SCALE: 1/2" = 1'-0"



PANTRY WALL (E8)
SCALE: 1/2" = 1'-0"

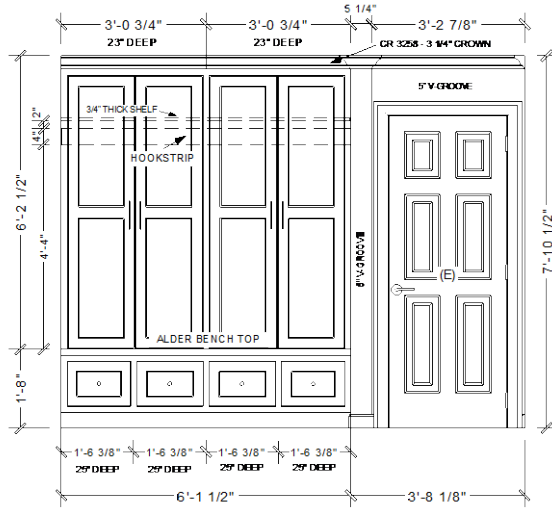


LAUNDRY (E9)
SCALE 1/2" = 1'-0"



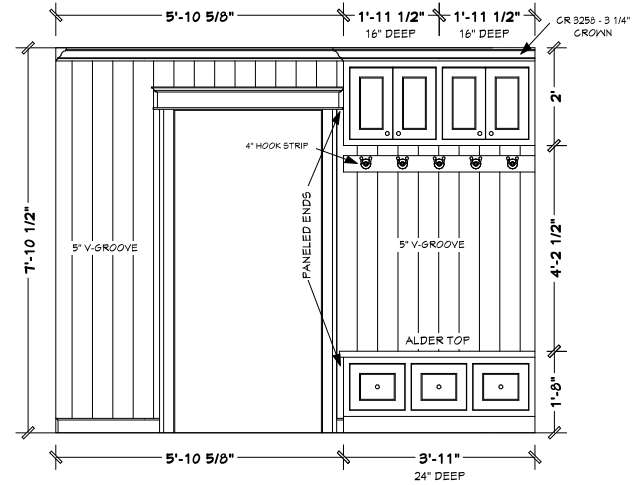
LAUNDRY STORAGE (E10)
SCALE 1/2" = 1'-0"

ELEVATIONS



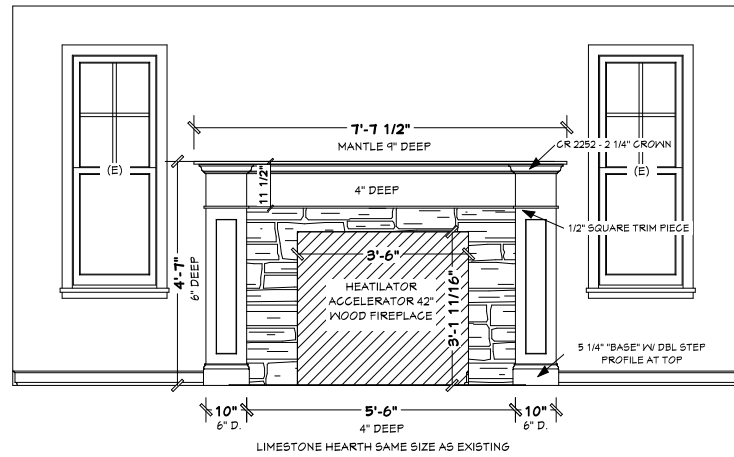
MUDROOM LOCKERS (E11)

SCALE: 1/2" = 1'-0"



MUD ROOM LOCKERS (E12)

SCALE: 1/2" = 1'-0"



LIVING ROOM FIREPLACE (E13)

SCALE: 1/2" = 1'-0"

BEFORE AND AFTER



SOLUTION:

- A flush 1,700lb I-beam was installed and buried in the ceiling to allow for movement of walls and doorways – thus a wider footprint
- The vaulted ceiling was closed in allowing for a clean ceiling and light fixtures
- A new wider window installed behind the sink with no arch top
- A great sized island with tons of workspace and comfortable seating



BEFORE AND AFTER



SOLUTION:

- A new wider window installed behind the sink with no arch top
- The vaulted ceiling was closed in, window removed and roof patched
- Wider walkways
- Drawers, Drawers and more Drawers for great access to storage

BEFORE AND AFTER



SOLUTION:

- A flush 1,700lb-beam was installed and buried in the ceiling to allow for movement of the walls and doorways – thus a wider footprint
- The vaulted ceiling was closed in allowing for a clean ceiling and light fixtures
- Unused desk area space was reclaimed
- Small pantry eliminated





BEFORE AND AFTER

SOLUTION:

- Wider opening into the kitchen for better sightlines
- Updated finishes and deeper cabinets for increased storage
- Updated finishes throughout





BEFORE AND AFTER

SOLUTION:

- Space was borrowed from the laundry room to allow for the butler pantry
- Better organized space with added appliances and prep sink



BEFORE AND AFTER

SOLUTION:

- Laundry was relocated and downsized for more pantry space
- Closed storage with accessible hanging
- Lots for flat space for folding
- Updated finishes





BEFORE
AND
AFTER



SOLUTION:

- Updated service / display cabinetry with new and updated finishes
- Refinished millwork, ceilings and flooring throughout



SUCCESS!

These homeowners now have an elegant, bright, and timeless space to enjoy for years to come!

2023 COTY Awards - Timeless Elegance