

# NARI MINNESOTA - 2023 CoTY AWARDS

**PROJECT: INDULGENT**

**CATEGORY: RESIDENTIAL BATH \$70,000-\$100,00**

This owner's suite bathroom came to us awash in white and beige and a breadth of outdated features including porcelain tile and a two-person jacuzzi tub that dominated the bathroom landscape.

Our client had a clear vision of what she wanted: a transformed spa-like escape that feels distinctive, contemporary and warm. Other must-haves on her list included a steam shower, a deep soaking tub and a wood accent wall.

The new design delivers on all counts. A new soaking tub accented by a contemporary maple slat wall strikes the tone for the new design. An existing two-sided fireplace is retiled floor to ceiling with a delightful herringbone patterned tile repeated elsewhere in the shower floor and niche. Nearby, the enlarged steam shower is stacked with features, including a rain shower and handheld showerhead, each with its own controls, a Minnesota-made fold-down teak bench and a linear shower drain.

Nearby, the spa-like indulgences continue. A new maple vanity compliments the maple accent wall while infusing the space with warmth. Striking grey, green and white veined Quartzite countertops top the vanity. A second filtered water faucet is included specifically at the request of our homeowner, who likes to make tea for long soaks in the tub. Meanwhile, LED lighted mirrors and a contemporary vanity light ensure perfect lighting for applying make-up.

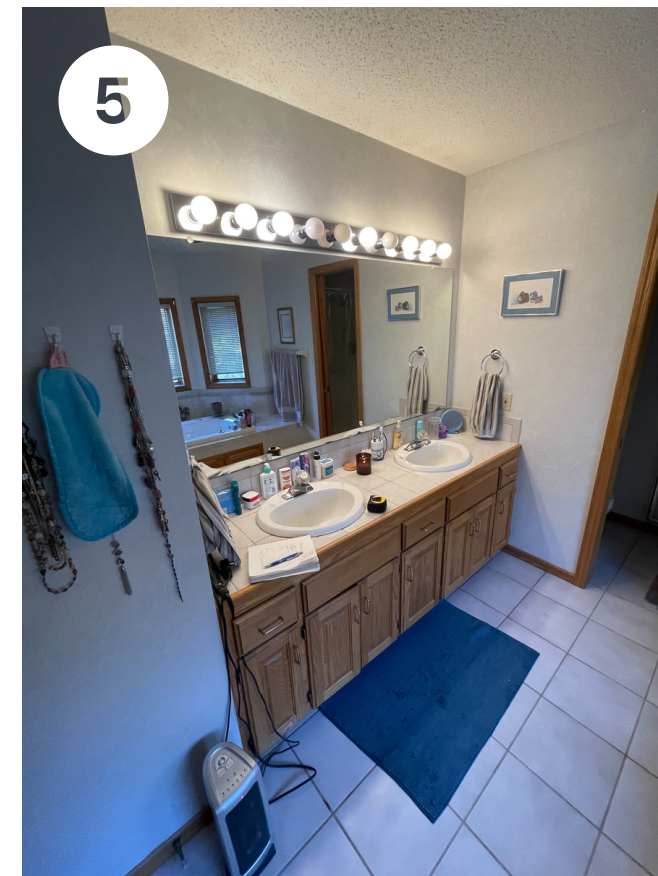
Grey marble patterned LVT flooring and matte black hardware, shower fixtures and Delta faucets complete the transformation into a contemporary retreat designed for indulgence and relaxation.



## BEFORE PHOTOS

Pictured clockwise starting in upper left corner:

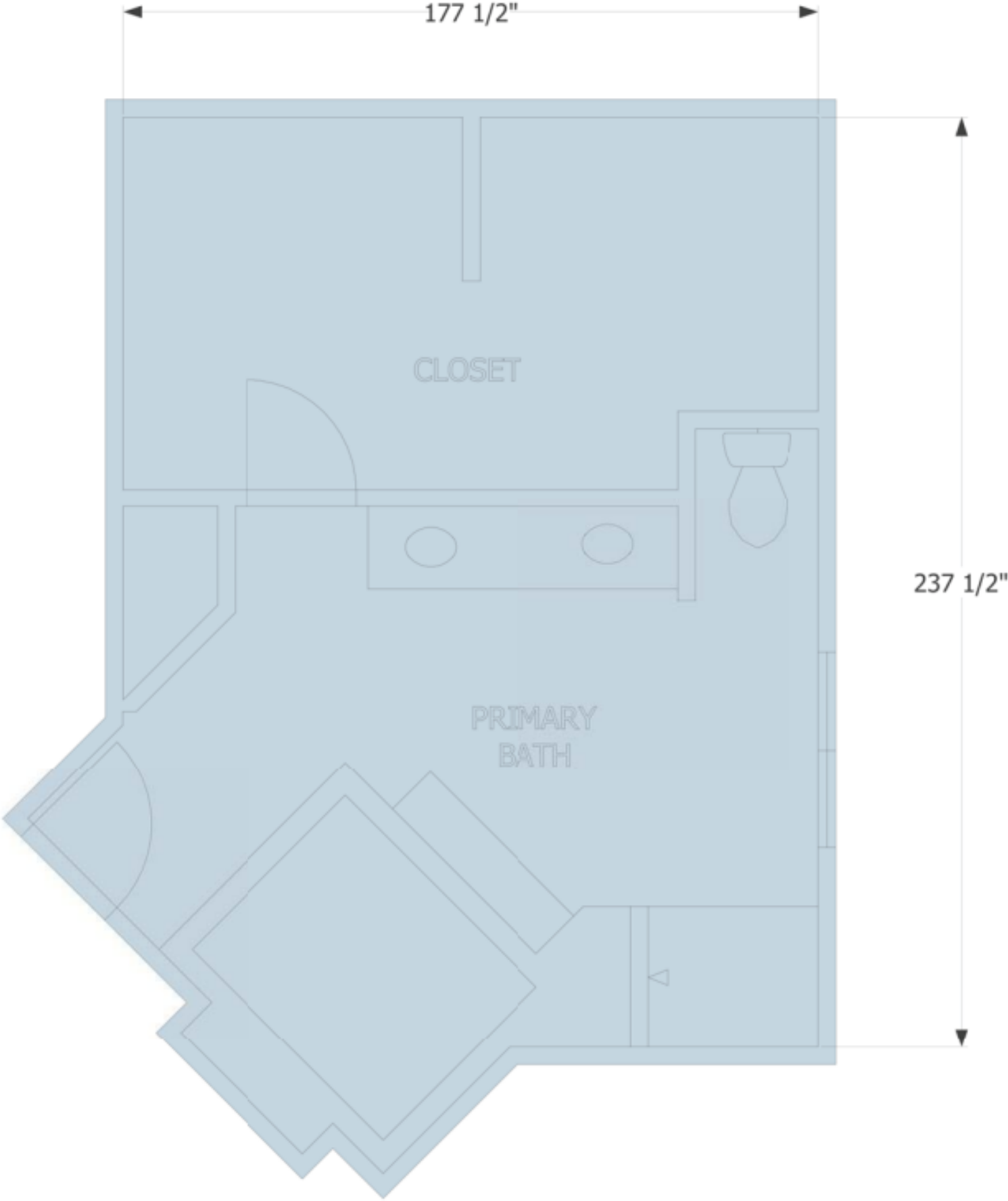
- 1) View into bathroom from hallway entrance
- 2) Gigantic two-person jacuzzi tub & tilework around fireplace
- 3) Existing shower
- 4) Existing toilet space
- 5) Existing vanity
- 6) Existing bathroom, view from hallway



## CLIENT REQUESTS

- Warm, contemporary design that feels unique
- Larger steam shower with linear shower drain and fold down bench
- Deep soaking tub to replace jacuzzi tub
- Filtered water faucet for making tea
- Wood accent wall
- Herringbone patterned tile work

**BEFORE SITE PLAN**



EXISTING FLOOR PLAN

## AFTER SITE PLAN & LAYOUT CHALLENGES

### Fitting Requested Elements

Fitting the enlarged steam shower while ensuring perfect alignment of the soaking tub and accent wall required careful planning.

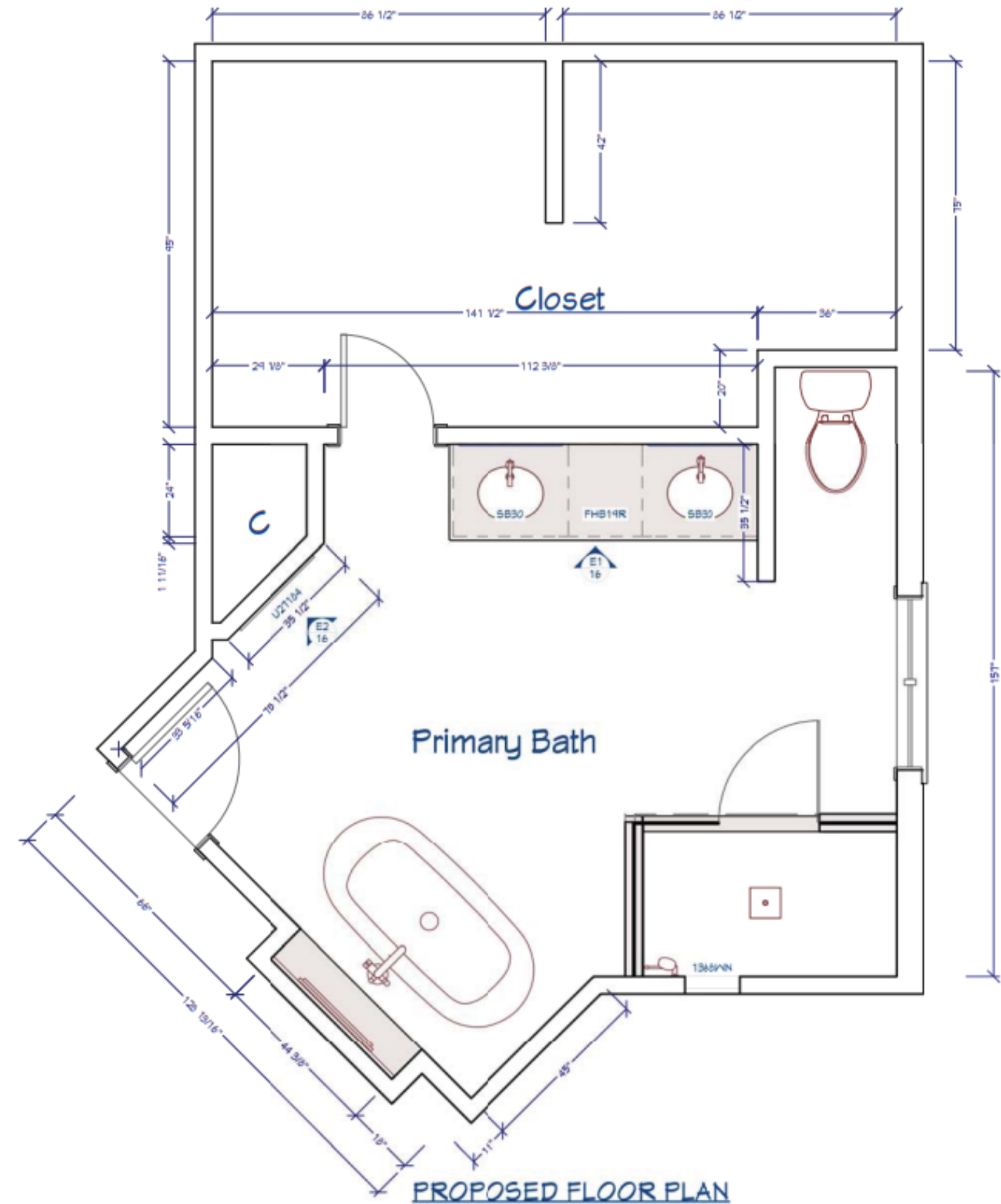
### Steam Shower Requirements

Steam shower required that we install a steam generator in the walk-in closet space as it could only be a certain distance away from the shower. Additional plumbing work was required to connect the generator to the shower.

In addition, the steam shower involved several other unique functional requirements including a glass enclosure that was sealed completely to hold steam in, tiling of the ceiling to protect against moisture, and a transom window that could be opened to let steam escape/dry out the shower.

### Separate Rain Shower and Handheld Shower Controls

Additional plumbing work was also required to accommodate separate controls for rain shower and handheld shower.



**BEFORE AND AFTER**



## FUNCTIONALITY

Enlarged steam shower with a Minnesota-made teak fold-down bench and linear shower drain. Steam generator installed in the nearby walk-in closet. Tiled ceiling, glass surround and door seal the shower completely for steam shower functionality. Included transom window at top for allowing steam to escape.

Steam shower control to left of shower niche in addition to a rainshower and handheld shower, each with separate controls.

Large soaking tub with floor-mounted tub filler aligned with fireplace. Towel rack nearby.

Dual sink vanity with second filtered water faucet on right sink per homeowner request.

LED lighted vanity mirrors with both back and front lights that can be adjusted with built-in controls.

Decorative accent light between the mirrors and can lights throughout the bathroom space, including the shower, ensure the bathroom is bathed in light.



**AESTHETICS**

Warm, sophisticated design with contemporary design elements including LED lighted mirrors, vanity light and wood slat accent wall.

Maple cabinetry compliments wood trim and accent wall.

Striking grey, green and white veined Quartzite countertops and grey marble-patterned LVT flooring add texture and interest.

A herringbone patterned tile repeated on the shower floor, shower niche and the wall surrounding the fireplace ties the design together.

Matte black hardware, shower fixtures, tub filler and Delta faucets add drama and a sense of sophistication.

