

NARI MINNESOTA - 2023 CoTY AWARDS

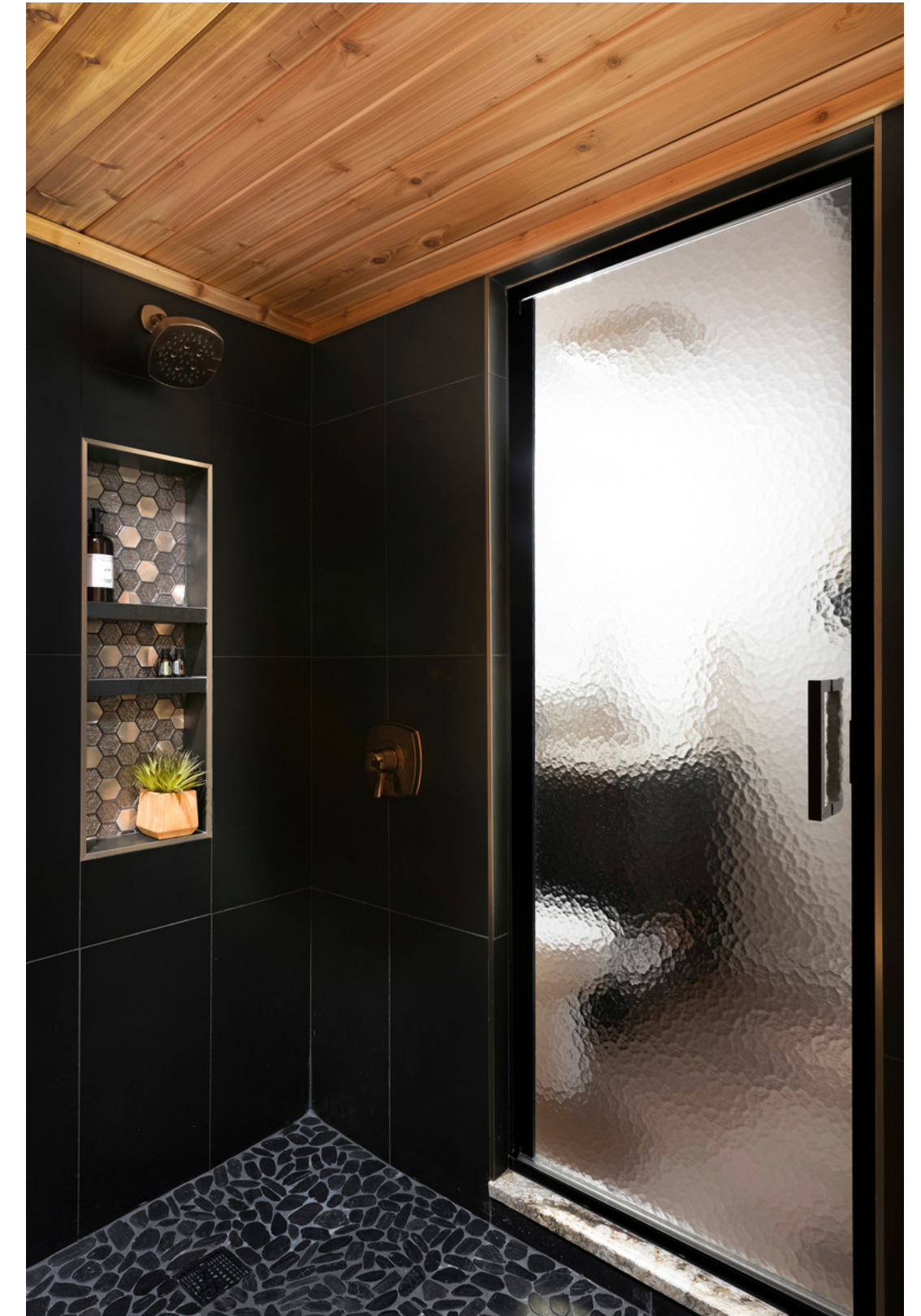
PROJECT: FINN SISU CATEGORY: RESIDENTIAL FEATURE UNDER \$50,000

This sauna was part of a bathroom and lower-level living area remodel. Our homeowners came to us with a very specific and unique goal for their new bathroom, a sauna. Having grown up in Northern Minnesota and having a Finnish heritage, this couple wanted to make their dream of a home sauna come true.

Unique to this sauna is that our homeowners wanted a shower space included for both post-sauna and guest bath use. This request presented a big challenge, both in terms of ensuring safety with water and electrical components sharing the same space and in terms of material selections and layout.

Thankfully, harmony is beautifully achieved. Featuring a matte black porcelain tile and metal hex mosaic accent tile, the oversized shower space stands in striking contrast to the cedar surrounding the sauna. The design of the tile is intentional, cut to follow a diagonal line both for visual impact and to protect the surrounding wood from water damage. Grounded by a flat black pebble mosaic floor and champagne bronze shower fixtures, the dynamic duo of shower and sauna ensures that nothing is lost in terms of usability for guests, and everything is gained when it comes to a retreat our clients can enjoy year-round.

The sauna itself stays true to its Finnish roots, featuring traditional bench seating and an electric sauna heater framed by the matte black porcelain wall tile that mirrors the opposing wall. The transformation creates a casual yet striking space that leaves you feeling like you've landed in an up-north Ely escape within the comforts of this Lakeville home. Altogether, this sauna proves that you don't need a large space to turn up the heat when it comes to design!



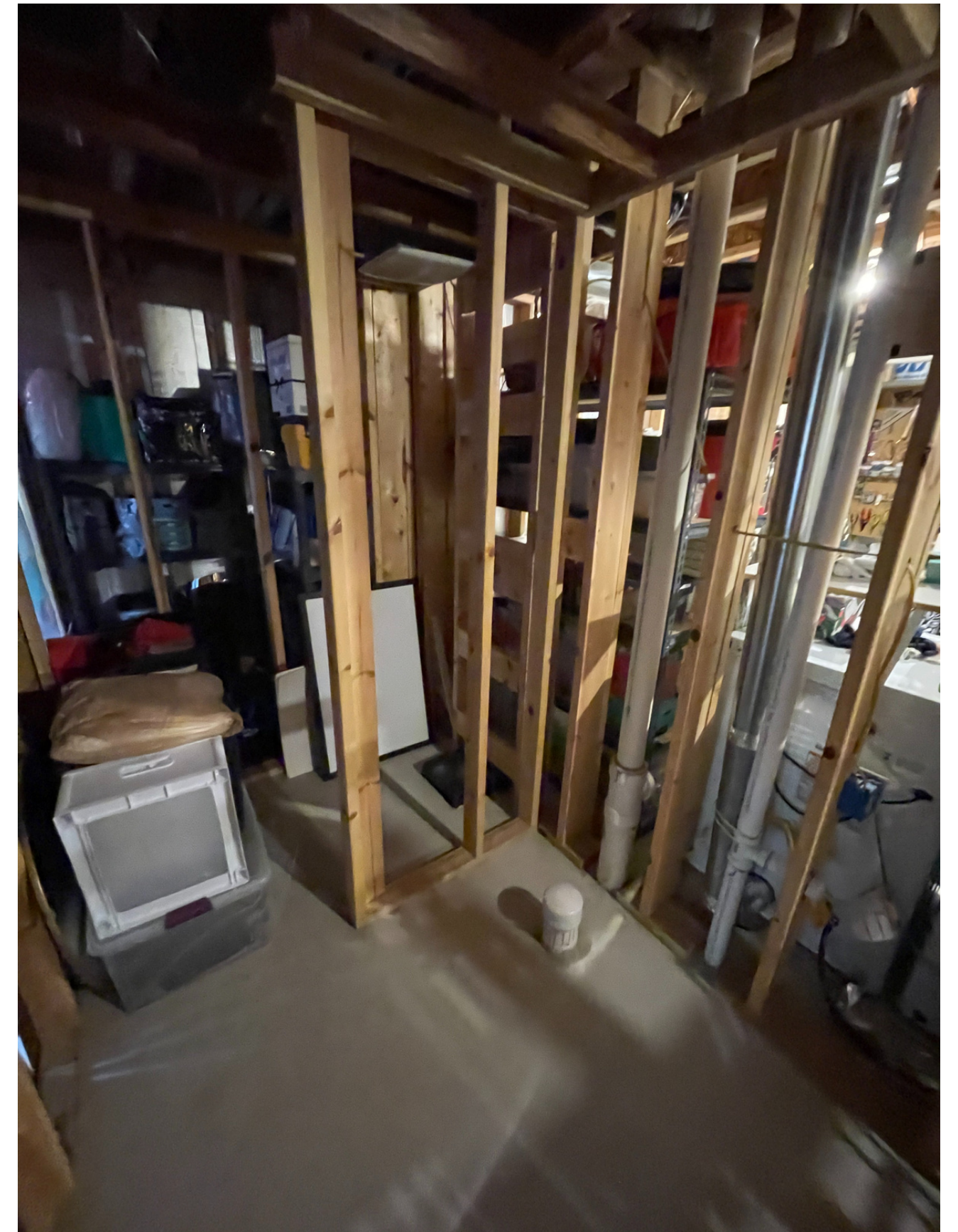
BEFORE PHOTOS

From left to right:

- 1) Framed in bathroom space with plumbing in place
- 2) View toward back wall of roughed in bathroom space. Behind is a closet area that belongs to an adjoining room.

CLIENT REQUESTS

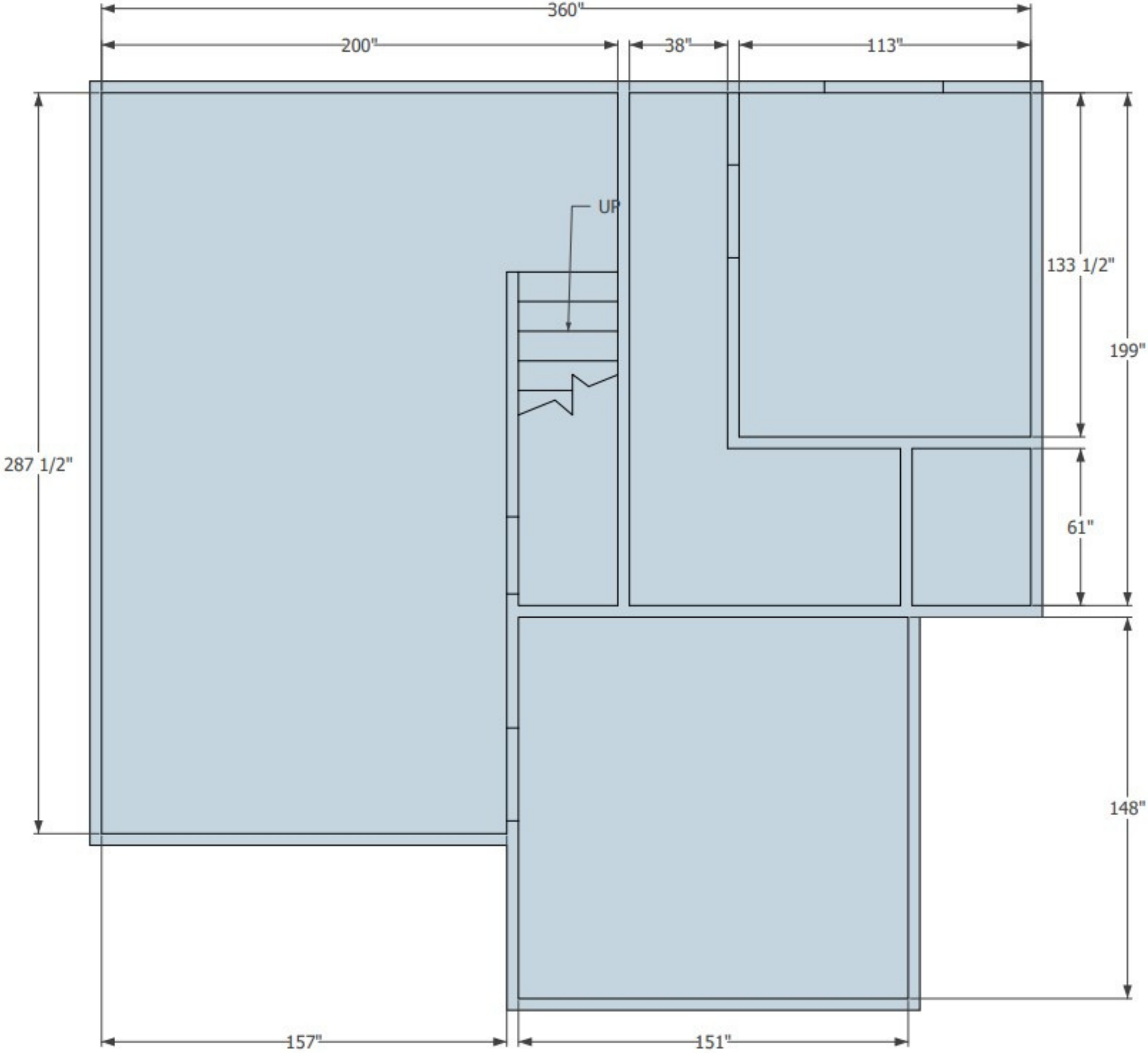
- Traditional steam sauna with built-shower
- Approachable yet indulgent design to deliver a vacation-at-home feel
- Bench seating



BEFORE SITE PLAN

Began as a partially framed bathroom space with plumbing in place.

Due to budget, all plumbing needed to stay in its original location.



AFTER SITE PLAN & LAYOUT CHALLENGES

Space

Beginning with a partially framed bathroom and a small footprint, the overarching challenge with this project is that we make the most of the space we had.

Work with Existing Plumbing

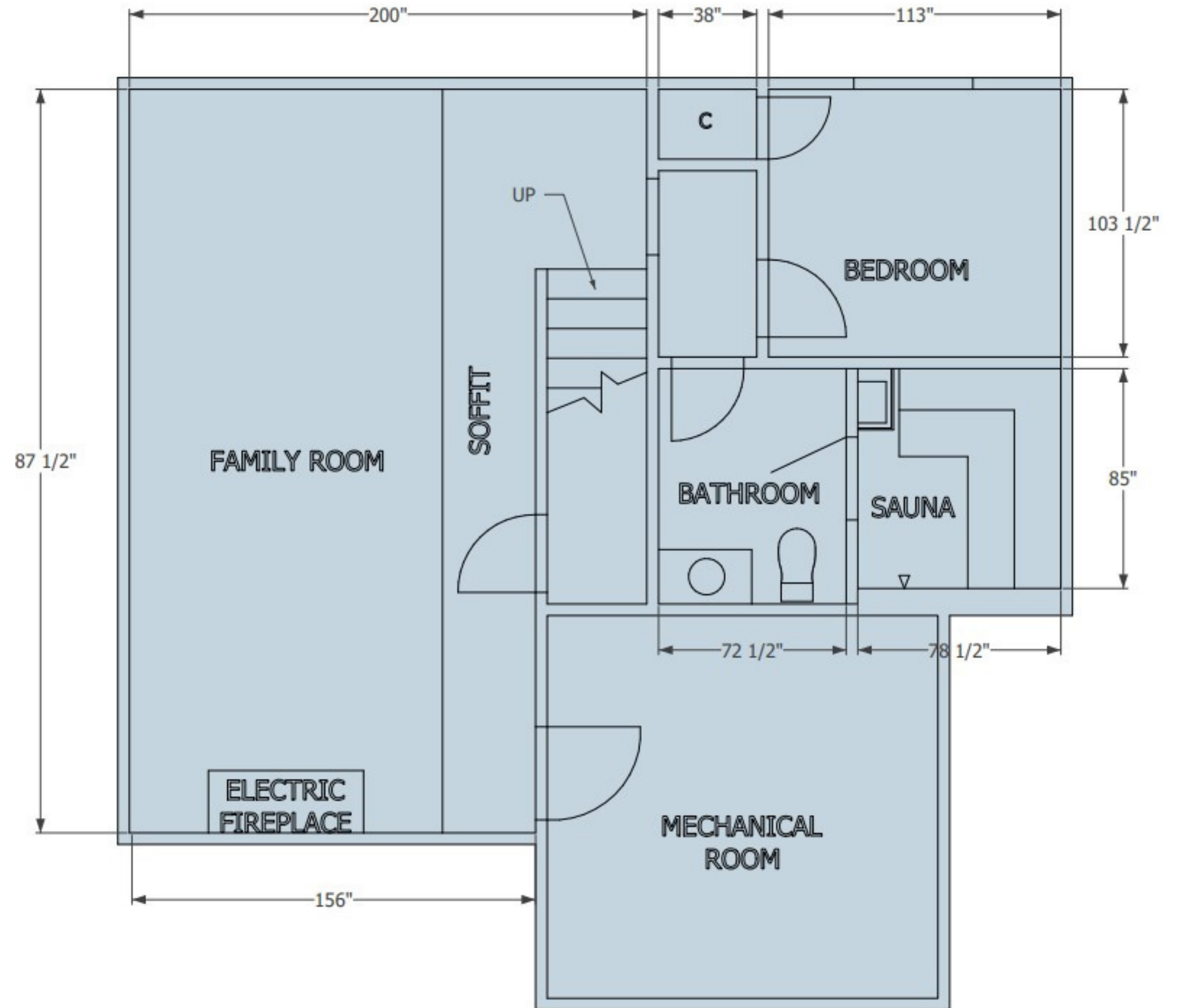
Also, due to budget, the existing plumbing needed to stay in its original location. Our homeowners wanted to spend a majority of their budget on the much-desired sauna space.

Making Room for the Sauna

Beginning with the roughed bathroom and the adjoining room, we chose to bump out the bathroom wall into the adjoining space, moving a closet and narrowing the adjoining room. This solution still left ample room in the adjoining room to become a much-needed guest bedroom while providing us with the extra space we needed for the bathroom remodel and new sauna space.

Combination of Sauna/Shower

Unique to this sauna is that our homeowners wanted a shower space included for both post-sauna and guest bath use. This request presented a big challenge, both in terms of ensuring safety with water and electrical components sharing the same space and in terms of material selections and layout.



BEFORE AND AFTER



FUNCTIONALITY

The new bathroom features a combined shower and sauna, allowing the bathroom to be used as a typical bathroom for guests while also making post-sauna showers a breeze.

Within the shower area, a shampoo niche provides storage space for necessary toiletries.

The diagonal cut of the tile work is visually striking but also serves the purpose of extending the tile far enough out to protect the cedar from splashes.

Originally from the iron range, our homeowners wanted nothing to do with an infrared sauna, instead opting for a more traditional steam sauna with double bench seating

The electric sauna heater is deliberately placed an adequate distance from the shower.

Glass privacy door seals in steam while ensuring privacy for the shower/sauna.



AESTHETICS

Featuring a matte black porcelain tile and metal hex mosaic accent tile, the oversized shower space stands in striking contrast to the cedar surrounding the sauna.

The design of the tile is intentional, cut to follow a diagonal line both for visual impact and to protect the surrounding wood from water damage.

Grounded by a flat black pebble mosaic floor and champagne bronze shower fixtures, the dynamic duo of shower and sauna ensures that nothing is lost in terms of usability for guests, and everything is gained when it comes to a retreat our clients can enjoy year-round.

The final design is a casual yet striking space that leaves you feeling like you've landed in an up-north Ely escape within the comforts of this Lakeville home.

