

Enriching Vintage Charm | Residential Exterior Over \$200,000

THE CHALLENGE

The homeowners wanted not only a front porch repair and update on their 1888 Victorian home, but also additional space for enclosed seating that maintained the architectural precedent and didn't detract from the beauty of the existing home. The front walkway was in need of a makeover as well.

THE SOLUTION

We accomplished the homeowners' goals by demolishing and rebuilding the front porch, steps, and concrete walkway, and expanding the front porch to include a screened-in seating area that visually balances the entire home and adds major points on curb appeal.



NARI MN 2023 COTY AWARDS, RESIDENTIAL EXTERIOR OVER \$200K

A Look Back

BEFORE



BEFORE

The porch is in need of an upgrade, and the west side of the house is set up for a larger porch. We wanted to achieve the functional and aesthetic goals that this home seemed to be asking for!

AFTER

Aesthetically, the porch adds balance to the structure without overwhelming the exterior of the house. The new columns significantly improve the look of the home, and much of the original design detail is met with similar elements (and longer-lasting construction materials!).

AFTER



BEFORE & AFTER

Preserving the Charm



MATCHING DETAILS

The new enclosed porch is directly adjacent to a previous addition. The screened-in porch can be accessed from the cozy living room or from the exterior portion of the porch near the front door.

Being in a historic neighborhood, it was important to us and the homeowners that we preserve the historic charm of the surrounding area. We replaced the skirting around the porch with a nearly identical design and coordinated the corbels under the soffit with the corbels on the second story.

The small gable centered on the door adds period-appropriate architectural detail, and the trim color matches what was originally there.

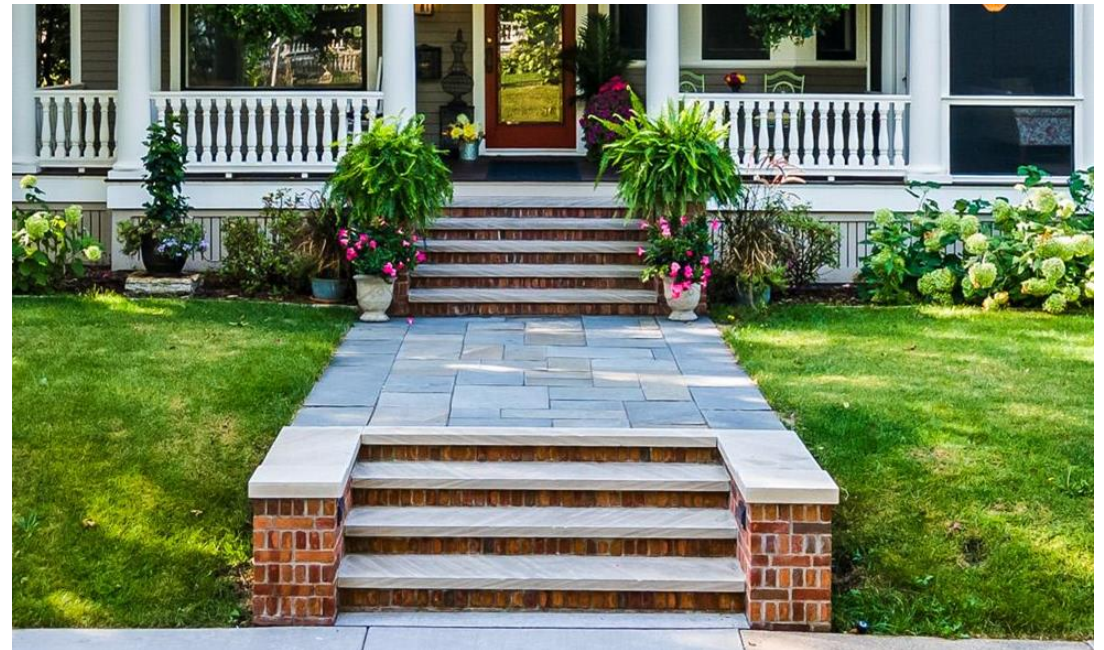
HONORING HISTORY

Steps Forward

BEFORE



AFTER



BEFORE

The front entry area had charm but was in serious need of an update. The wood steps were in disrepair, and paint was peeling away. The railing balusters are slightly too small for the space, and overall, the porch isn't quite as sturdy as it ought to be.

AFTER

The new walkway is a real showstopper! We expanded the width for greater functionality and upgraded the materials to last. With limestone treads and a cut bluestone landing, this entrance is much more appropriate for a home as stately as this one.

BEFORE & AFTER

Building Artfully



DESIGN DETAILS

Our carpenters crafted a beautiful exterior structure complete with Doric columns harkening back to the Victorian era.

The columns and porch railing were meticulously proportioned by the architects for an appropriately balanced aesthetic.

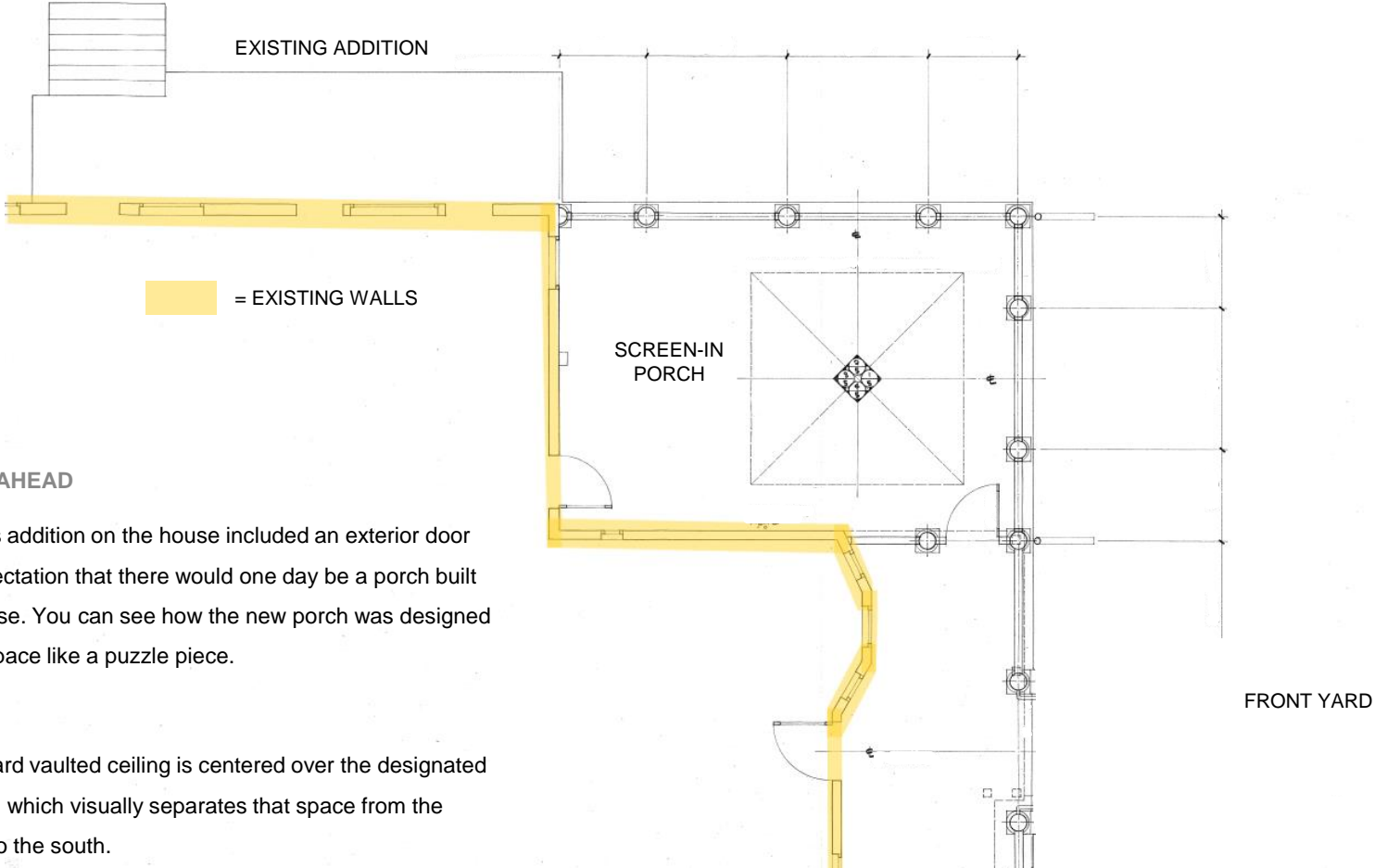
The check rails on the screens are positioned below eye level so as not to disturb the view, as well as for safety.



DESIGN & CRAFT

Nº 5 of 12

The Planning Phase



PLANNING AHEAD

The previous addition on the house included an exterior door with the expectation that there would one day be a porch built onto the house. You can see how the new porch was designed to fit in the space like a puzzle piece.

The beadboard vaulted ceiling is centered over the designated seating area, which visually separates that space from the dining area to the south.

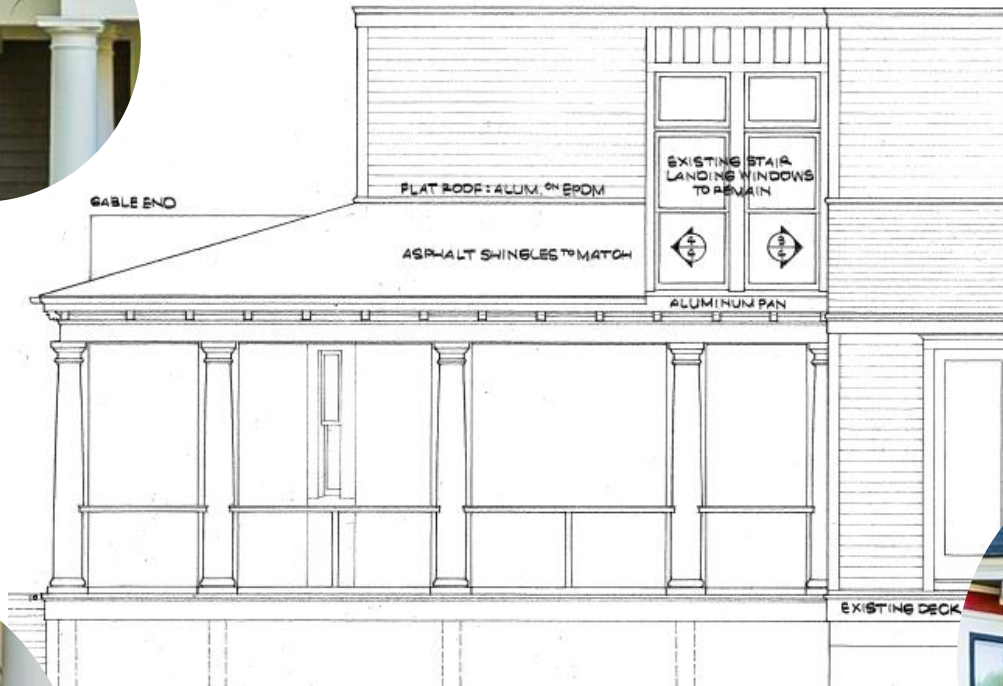
Every Detail Thoughtfully Designed



PROPORTION

Getting the size and shape of the columns right was crucial on this project, as they're such a prominent feature.

Each column is 12" wide and spaced either 8' or 5' apart.



BALANCE

The columns on each face of the porch are spaced symmetrically from a center line or an architectural feature. Not only are these attractive columns holding up the porch roof, but they help create the feeling that this exterior design was part of the original architecture.



UNITY

Creating a unifying aesthetic between the old and new details was the homeowners' main priority. The Victorian style of the corbels, columns, and railing balusters were major players in accomplishing that goal.

ARCHITECTURAL DETAILS

Indoor / Outdoor Seating



FUNCTIONALITY

The large-format screens on the enclosed portion of the new porch offer ample sunlight, let the breeze through, and have a sleek design that doesn't detract from the existing exterior details.

The two types of seating areas make this a great space for entertaining and hosting guests. The open portion of the porch includes an irrigation system in the main beam, so the homeowners can have beautiful foliage displayed all summer long.

The enclosed space is used often for hosting large gatherings, so ample outlets were included for small appliances and extra lighting as needed.

VERSATILITY

Nº. 8 of 12

Layers of Lighting



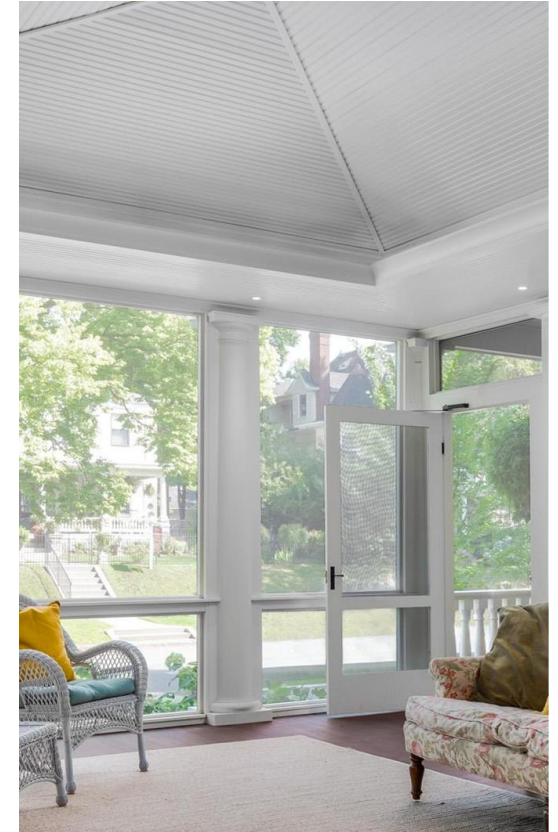
AMBIENT

Having a perfect ambiance is crucial for a space like this. The different light fixtures offer versatility for the use of the space. Eight wafer lights serve as the primary lighting for the space.



TASK

When the space is used for dining, the traditional-style wall sconce comes in handy.



ACCENT

The inset detail in the vault of the porch ceiling contains LED rope lighting that adds a subtle glow to the sitting area.

LIGHTING

Nº 9 of 12

Blending Old & New



AESTHETICS

The new screened in portion of the porch ties into the existing house beautifully. The glass door and two windows were existing, and we chose a matching trim color for all the new millwork. The warm undertones of the siding and flooring colors complement the same quality of the existing siding.

CRAFTSMANSHIP

The paneled ceiling adds so much texture to the space and was the biggest construction challenge of the project.

FUNCTIONALITY

The 450 square foot screened area can be rearranged and redecorated in infinite ways to accommodate all types of gatherings, rain or shine!

COHESION

Nº 10 of 12

Elevating Our Craft

PUTTING IN THE WORK

Our carpenters hand-framed the interior, 4-sided vault within the new shed roof structure.

We wanted to keep the roof pitch relatively low so as to not interfere with an existing second story stairwell window.

The framing of the shed roof creates the “trench” that is the flat ceiling, and the vaulted ceiling “hangs” from that shed roof framing.

The result is an added sense of openness to this already airy space and a visual designation of the two typical functions of the room.



INNOVATING

Nº 11 of 12

Putting It All Together

ENRICHING VINTAGE CHARM

This home had so much character and history before we ever got involved. We wanted to give the homeowners the functionality they needed, as well as honor the nearly 135-year-old architectural detail.

The upgraded exterior offers the homeowners more of the lifestyle they were looking for, with space for friends and family to spend quality time together, all while enriching the original charm of the home and adding a beauty to the neighborhood that is truly timeless.



NARI MN 2023 COTY AWARDS, RESIDENTIAL EXTERIOR OVER \$200K