

BUILDING WHAT'S NEXT

INTRODUCTIONS

Past Projects

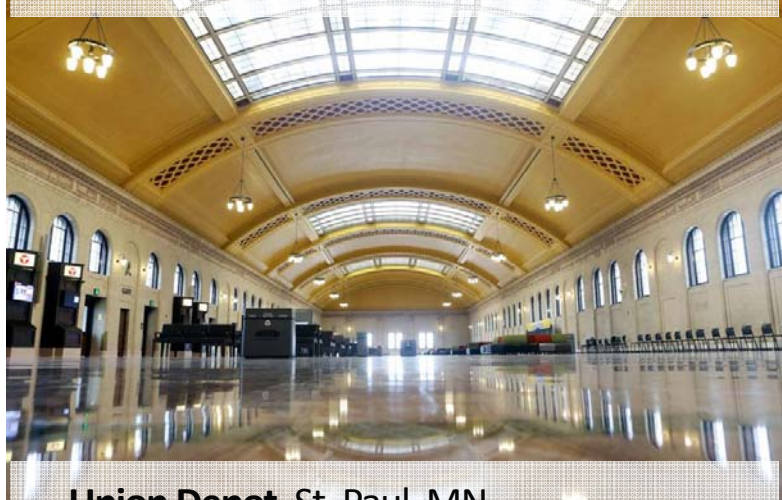


TCF Bank Stadium, Minneapolis, MN



Amsoil Arena, Duluth, MN

Copyright Jim Rosvold



Union Depot, St. Paul, MN



Alerus Center, Grand Forks, ND

COM

FAMILY
OWNED
FIRM

60

YEARS
STRONG

10

GEOGRAPHIC
OFFICE
LOCATIONS



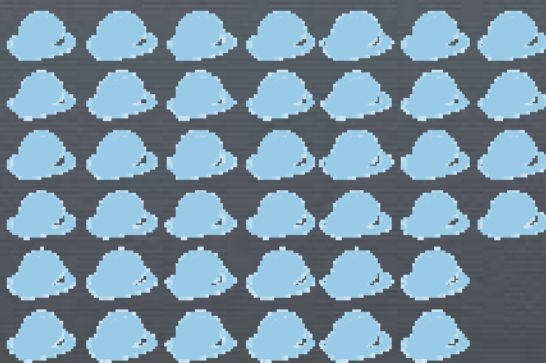
NATIONAL &
INTERNATIONAL
PROJECTS



7 INDUSTRY-SPECIFIC
OPERATING
GROUPS



4,000
TEAM
MEMBERS



\$2B+
ANNUAL
REVENUE*



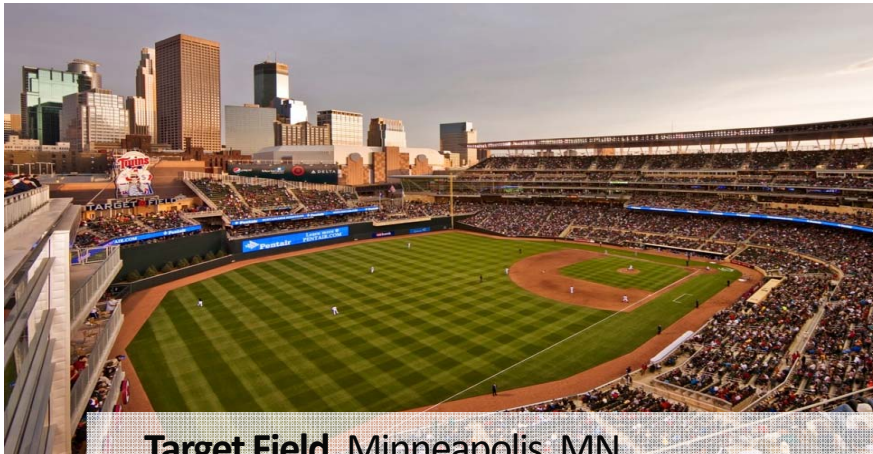
*As reported to ENR 2013

IT IS ALL ABOUT OUR RELATIONSHIPS

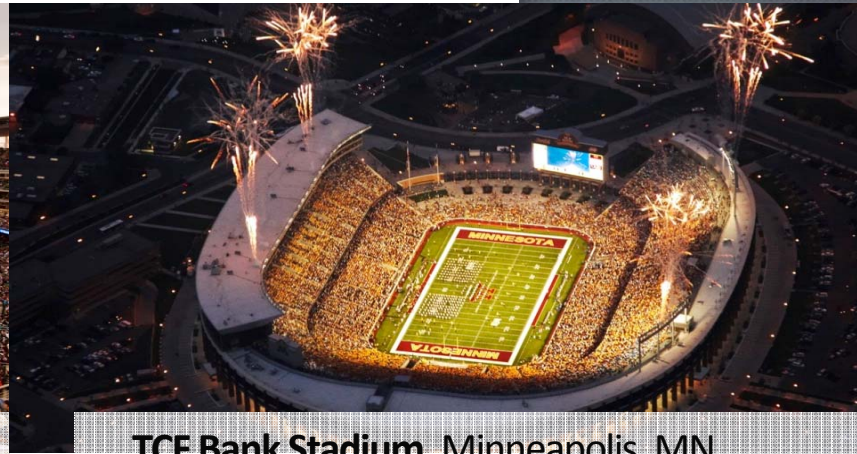


- ▶ RENEWABLE ENERGY
- ▶ HEALTHCARE
- ▶ HIGHER EDUCATION
- ▶ FEDERAL GOVERNMENT
- ▶ CIVIC/MUNICIPAL
- ▶ TRANSPORTATION/
INFRASTRUCTURE
- ▶ CORPORATE
- ▶ HOSPITALITY
- ▶ LABORATORY &
LIFE SCIENCES
- ▶ DATA CENTERS

All Local Team AND...



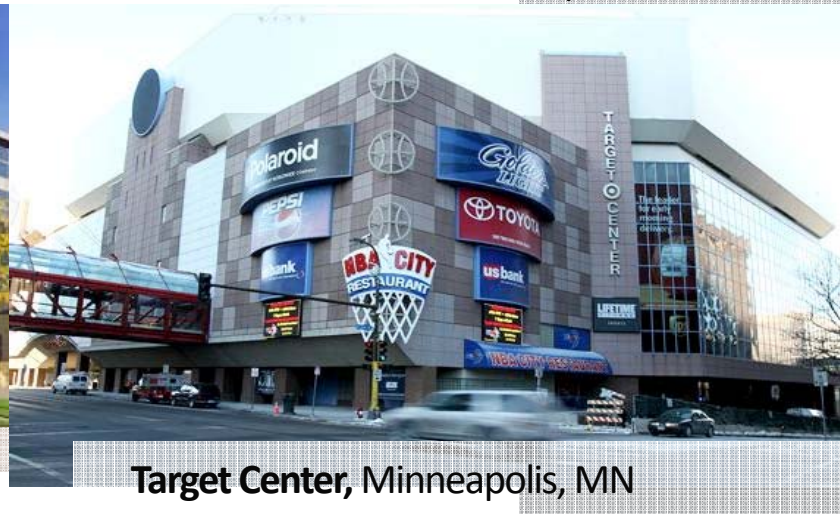
Target Field, Minneapolis, MN



TCF Bank Stadium, Minneapolis, MN

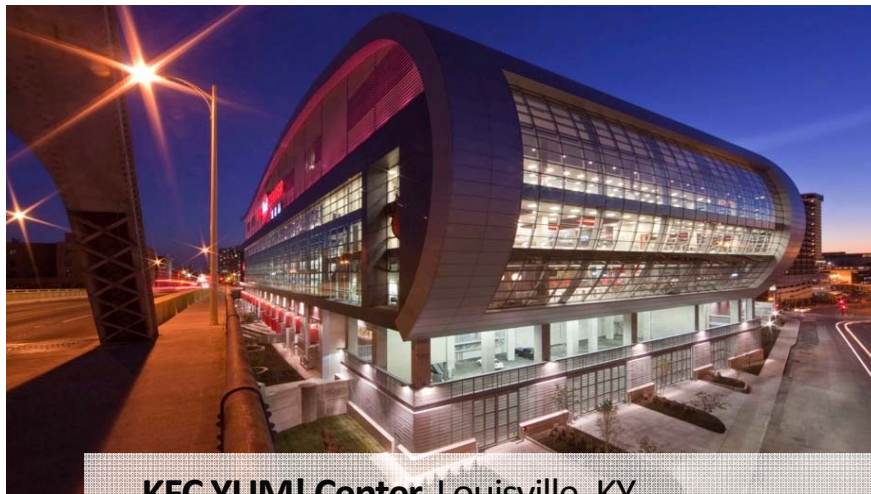


Xcel Energy Center, St. Paul, MN



Target Center, Minneapolis, MN

... National Sports Builder



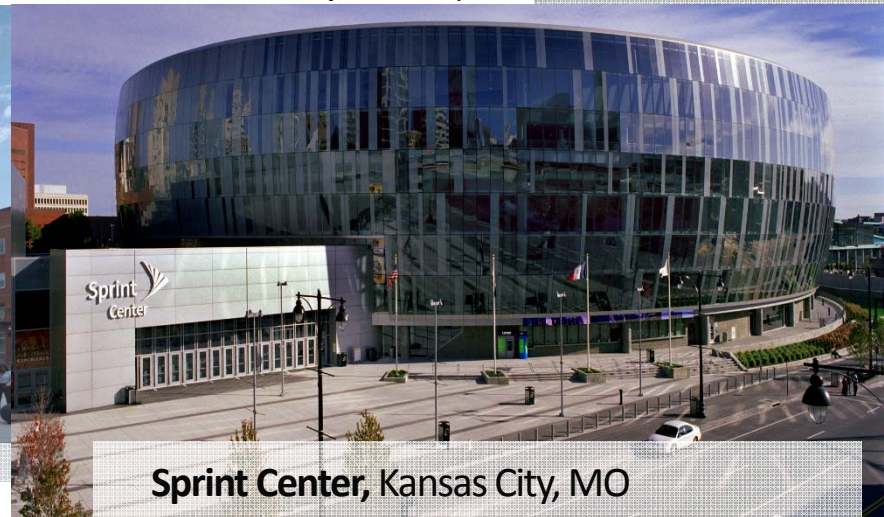
KFC YUM! Center, Louisville, KY



Coors Field, Denver, CO



FedExForum, Memphis, TN



Sprint Center, Kansas City, MO

U.S. BANK STADIUM



Start Date: December 3, 2013

Substantial Completion Date: July 29, 2016

Construction Value: \$847.6 Million

Architect/Engineer: HKS Architects / Thornton Tomasetti

Customer: Minnesota Sports Facilities Authority

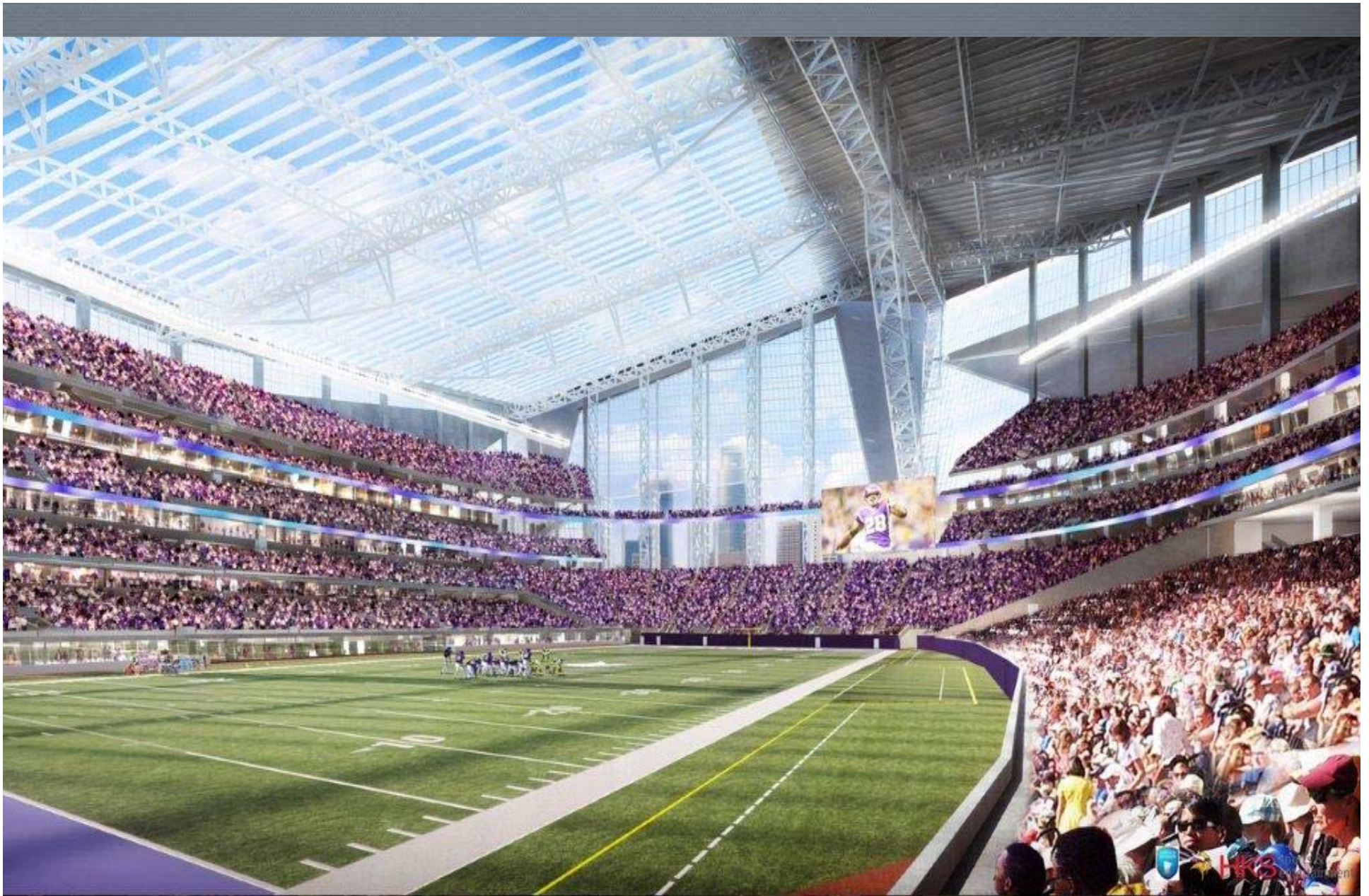
PROJECT OVERVIEW

- Home to the Minnesota Vikings
- Venue for a broad range of civic, community, athletic, and cultural activities
- \$847,600,000 construction budget
- 1.7 million square feet
- 65,000 seats; up to 125 suites; 7,500 club seats
- Largest clear ETFE roof in the world
- 5 Operable Doors - 55' wide and ranging from 95' high to 78' high

PROJECT OVERVIEW



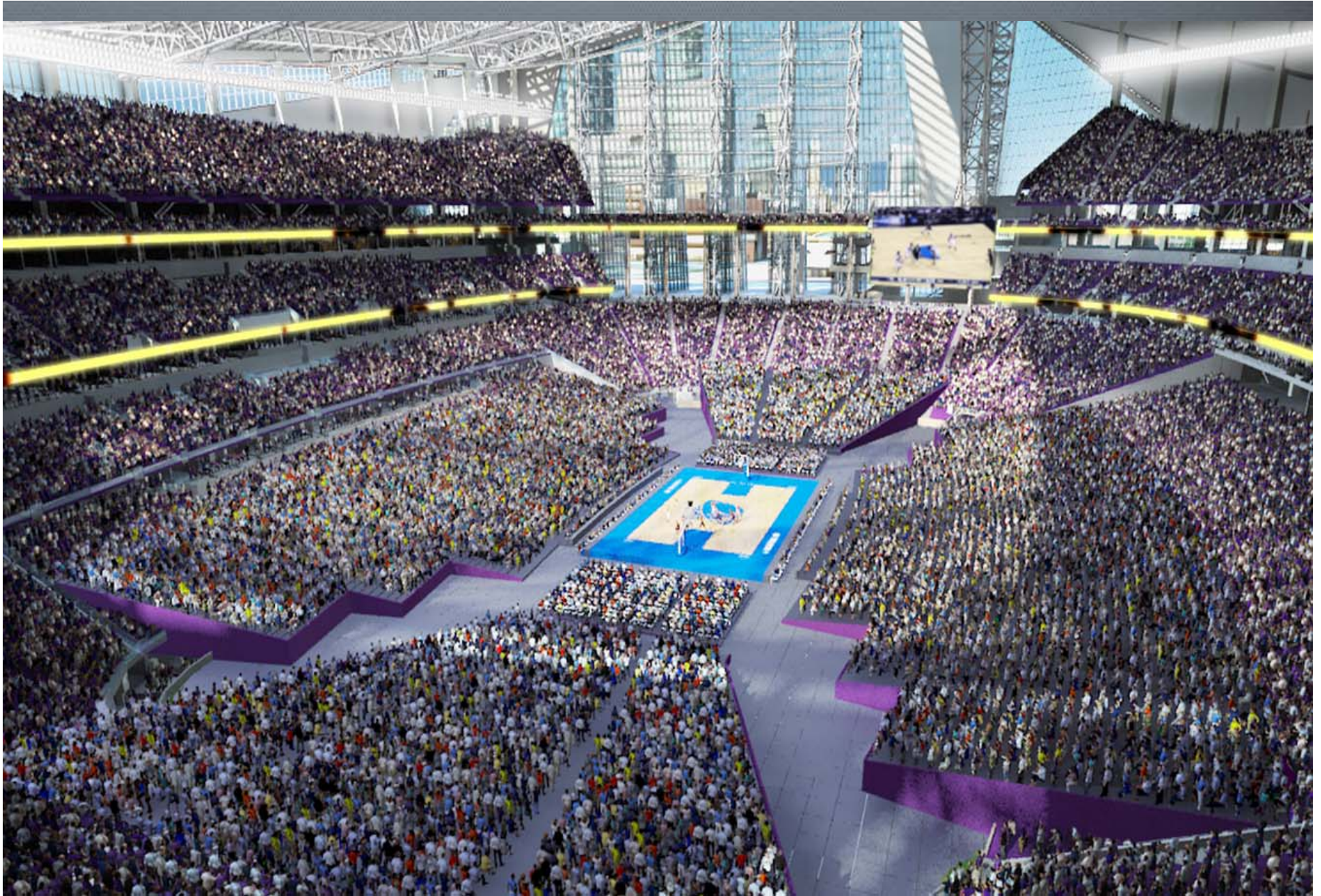
U.S. BANK STADIUM



U.S. BANK STADIUM



U.S. BANK STADIUM



U.S. BANK STADIUM

PROPOSED RYAN DEVELOPMENT
GAME DAY VIEW



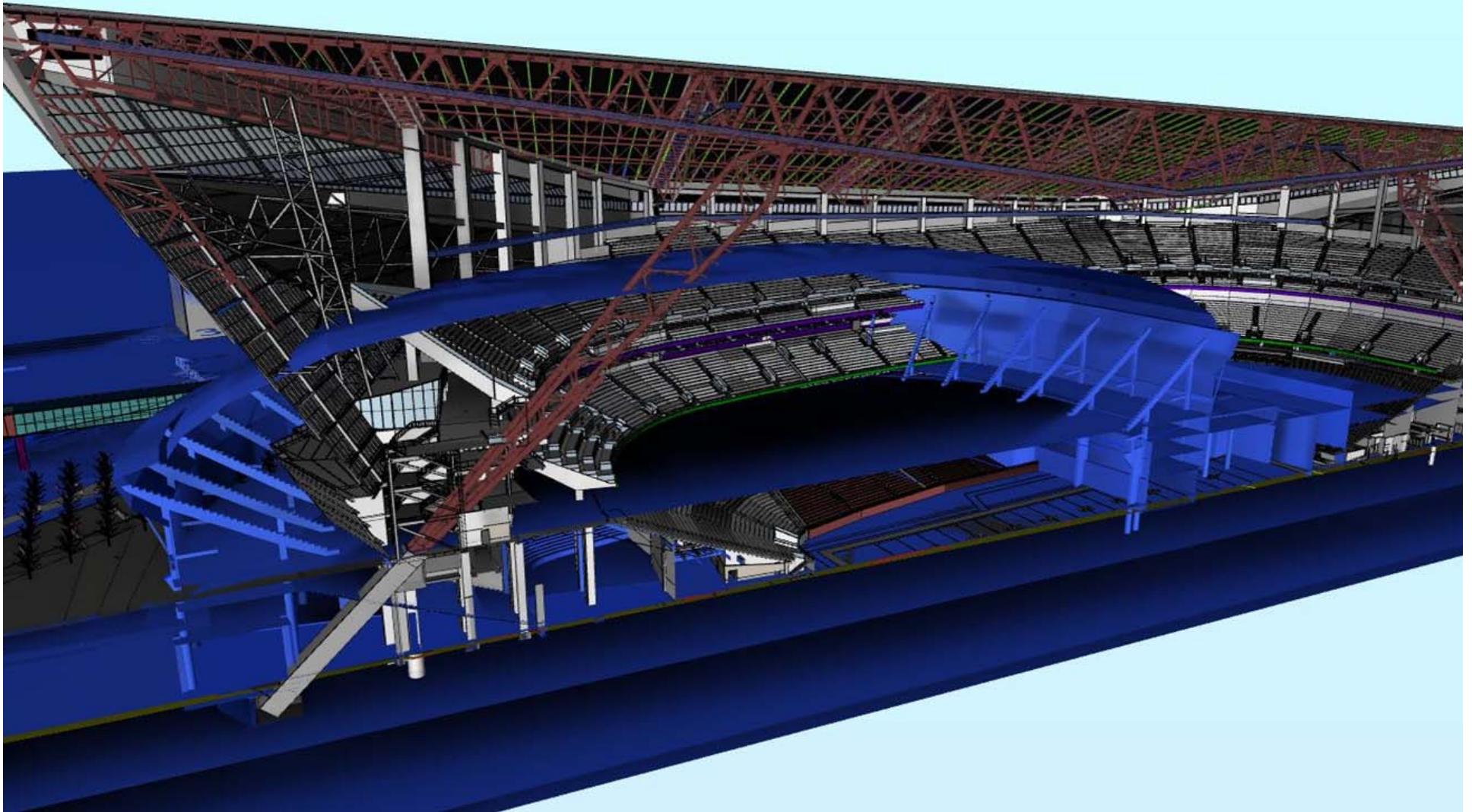
U.S. BANK STADIUM

● WWW.MORTENSON.COM



Mechanical Mezzanine
 Upper Concourse
 Upper Suite
 Upper Club
 Main Concourse
 Lower Club
 Lower Suite
 Event

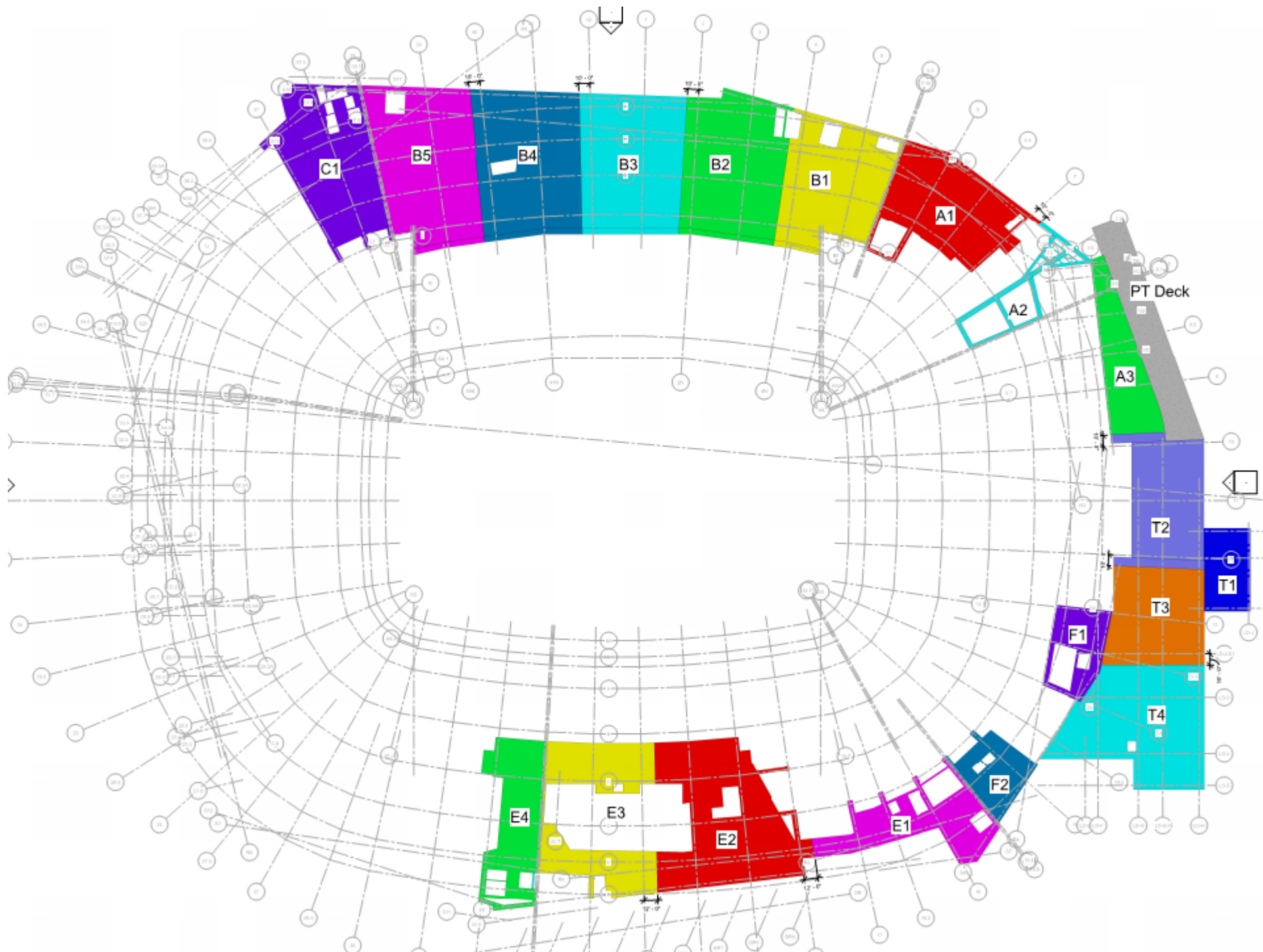
PROJECT OVERVIEW



SIZE COMPARISON

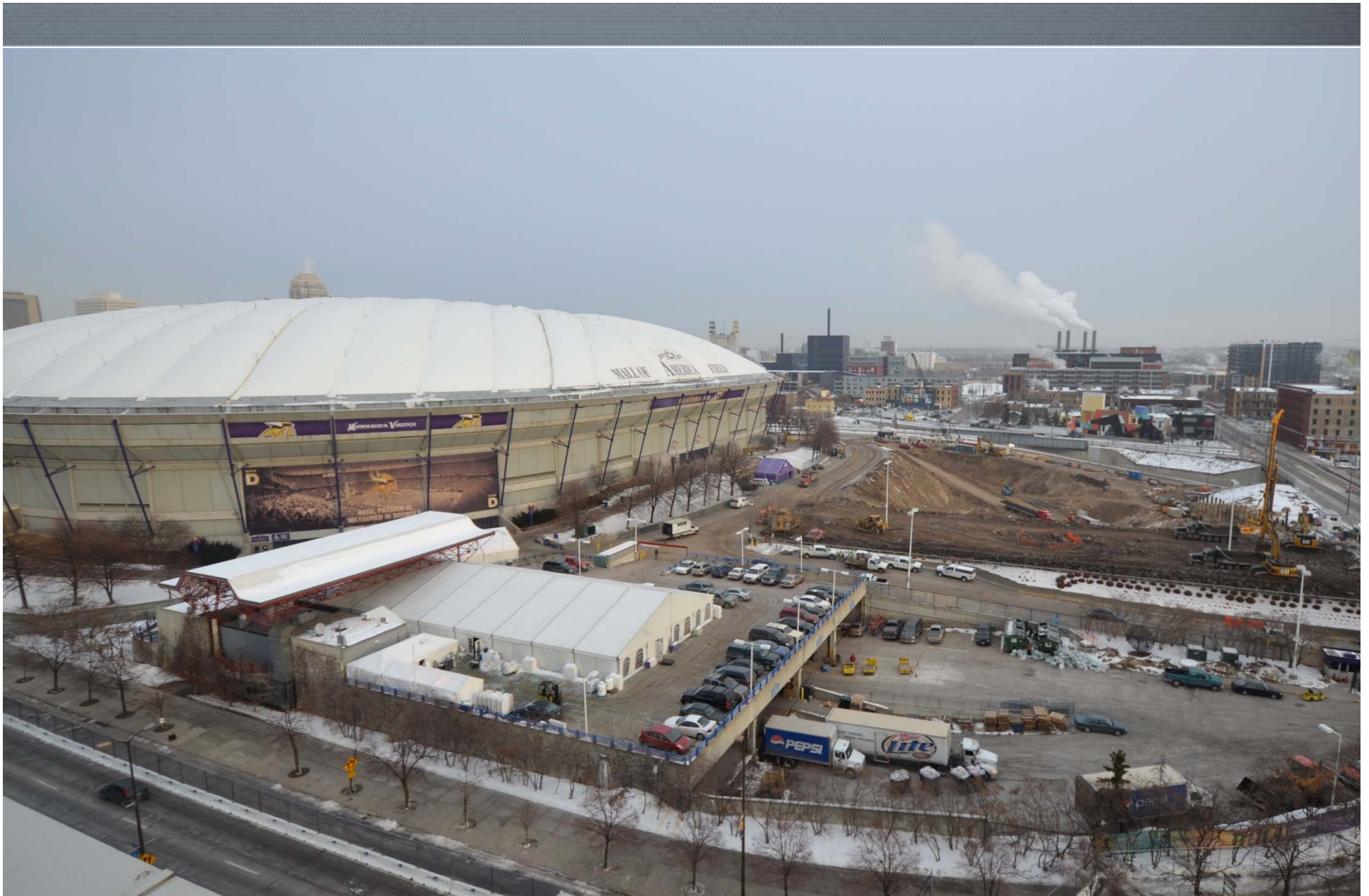
Schedule Milestones

- **Groundbreaking:** December 3, 2013
- **Excavation:** November 2013 - April 2014
- **Tower Cranes Erected:** January – June 2014
- **Demolish Metrodome:** January - April 2014
- **Concrete Foundations:** January 2014 - February 2015
- **Structural Steel Erection:** August 2014 – November 2015
- **Enclosure:** Complete November 2015
- **ETFE Installation:** May 2015 – November 2015
- **Substantial Completion:** July 29, 2016

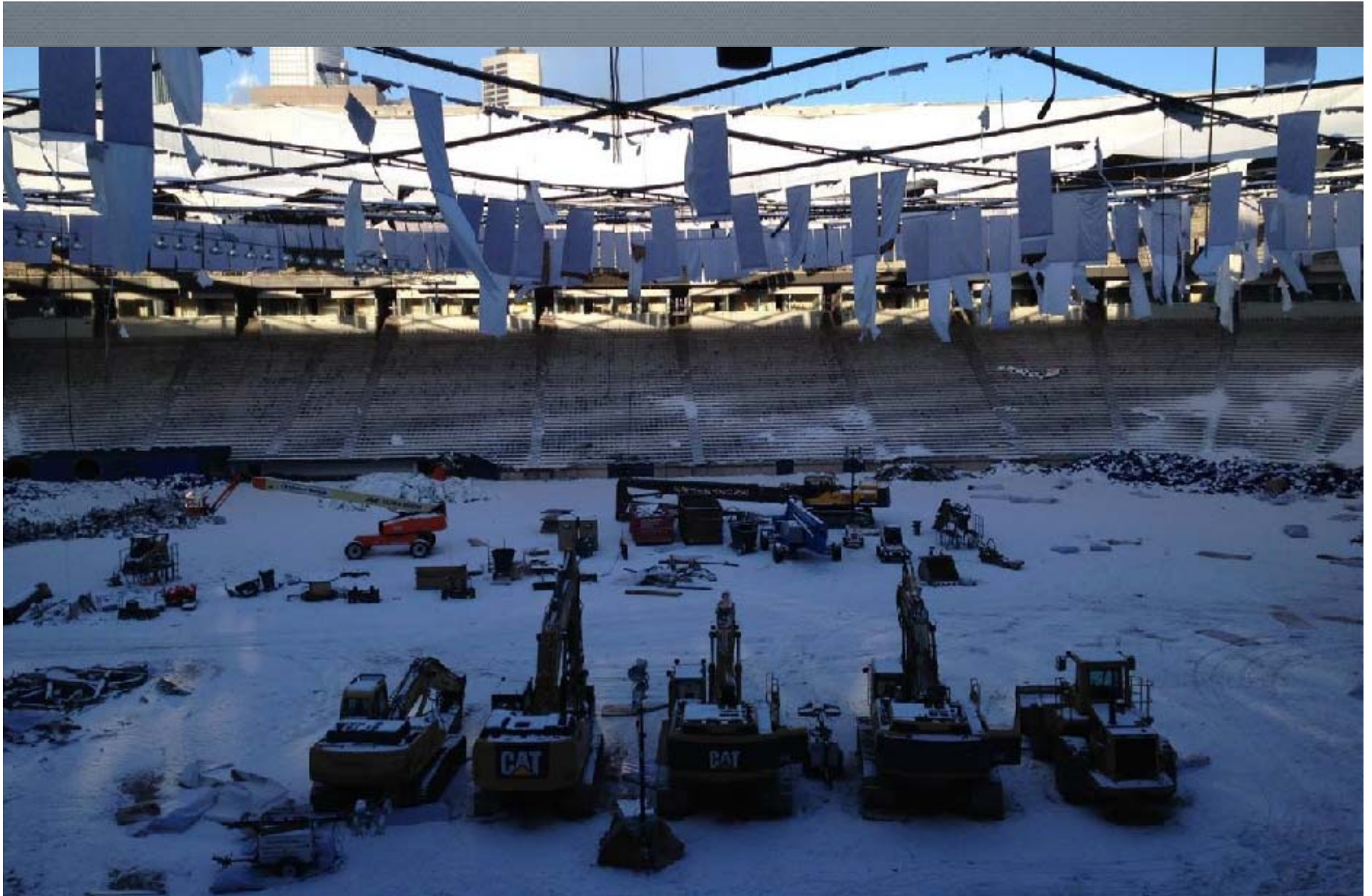


1. 1 INCHES IN LENGTH AND 1/8 INCHES IN DIAMETER REFER TO METAL.





DECEMBER 2013



FEBRUARY 2014

FEBRUARY 2014



APRIL 2014



JUNE 2014



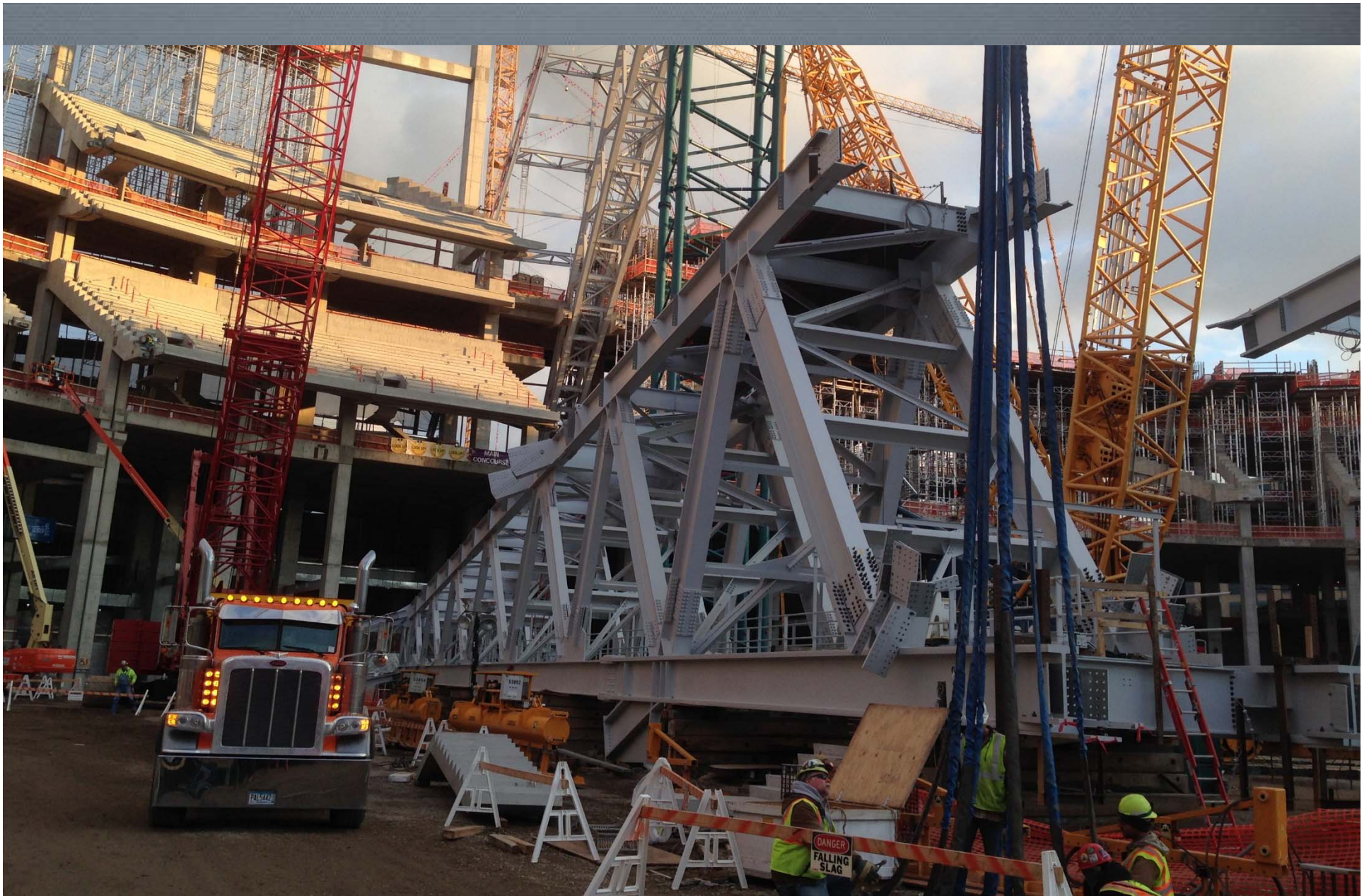
JULY 2014



JULY 2014



AUGUST 2014



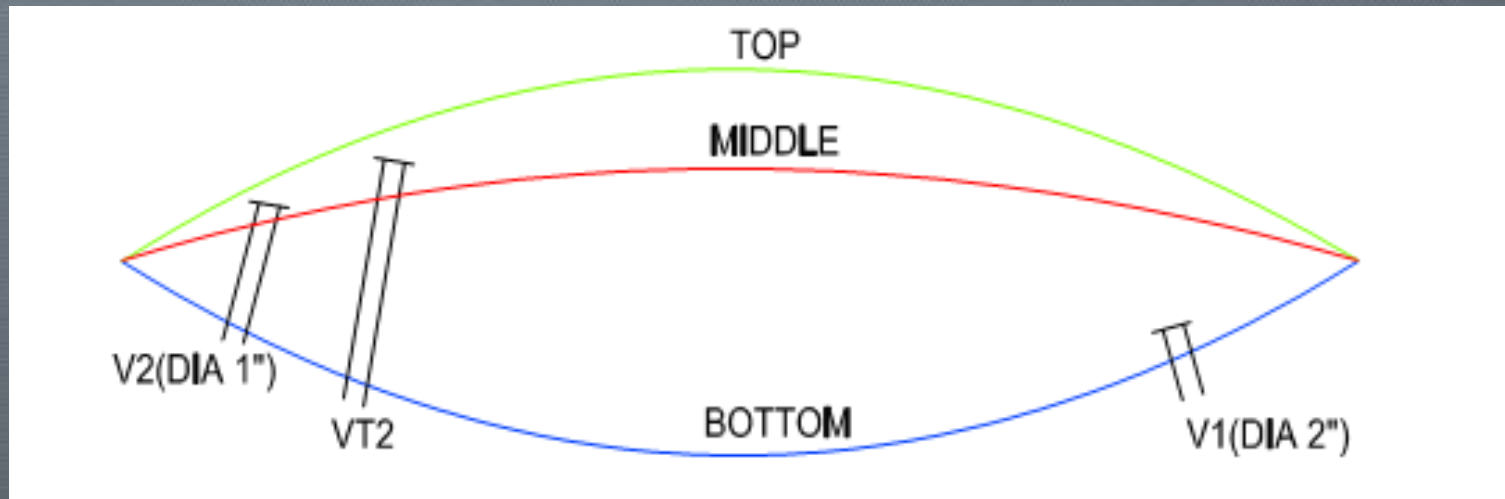
NOVEMBER 2014



MARCH 2015



MAY 2015



MAY 2015

Snow Catchment Basin

- Designed for 100 year event
- Deepest section: 40+ feet
- Steepest Slope: 45 degrees
- Combination of concrete and metal decking wearing surfaces
- Heated concrete topping slab



APRIL 2015



JULY 2015



JULY 2015



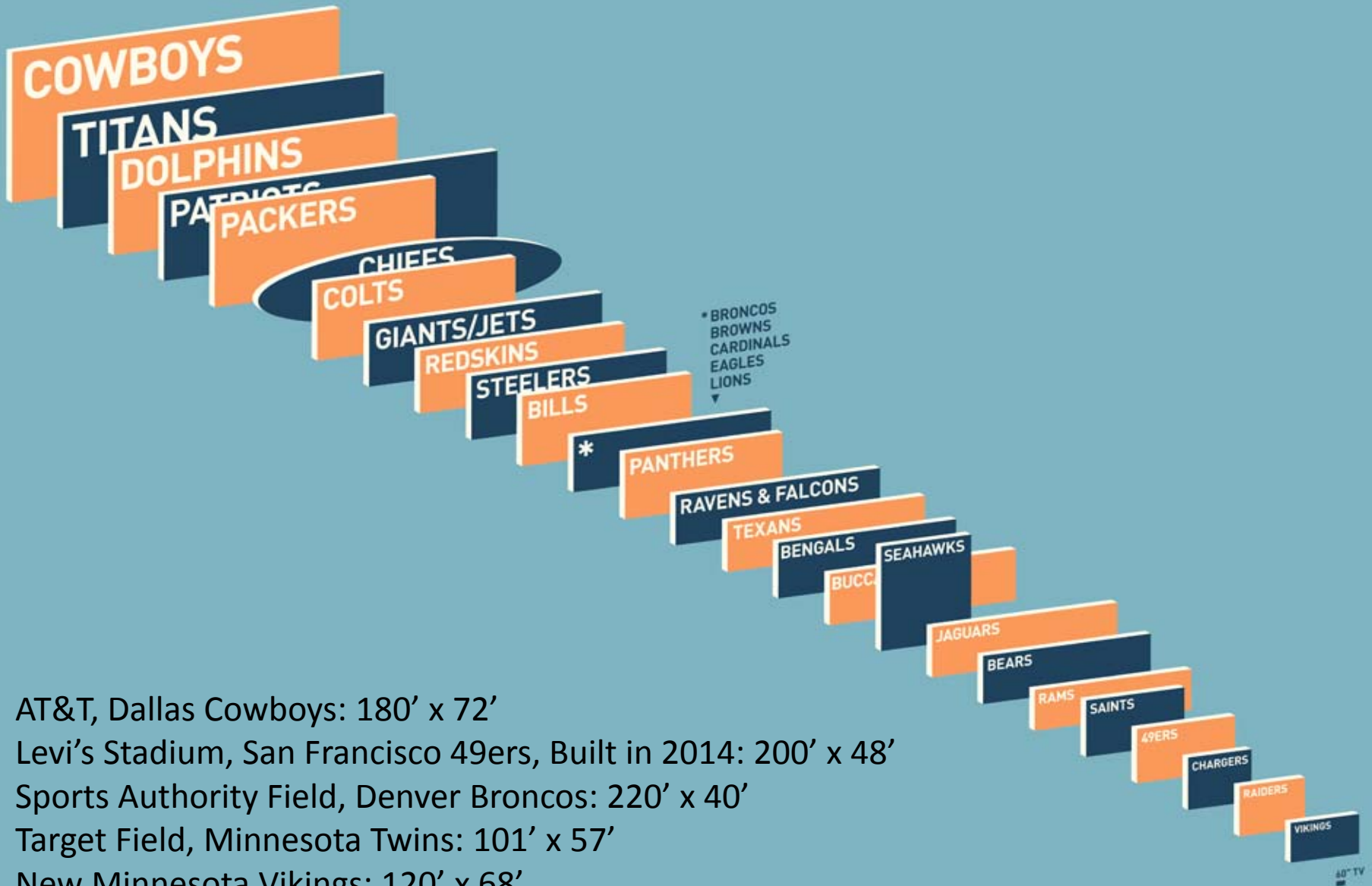
AUGUST 2015

Interior Finishes

- Tile, FRP
- Prime, Final Coat Paint
- ACT, Hard Lid Ceiling
- Food Service Equipment
- Overhead Coiling Grilles

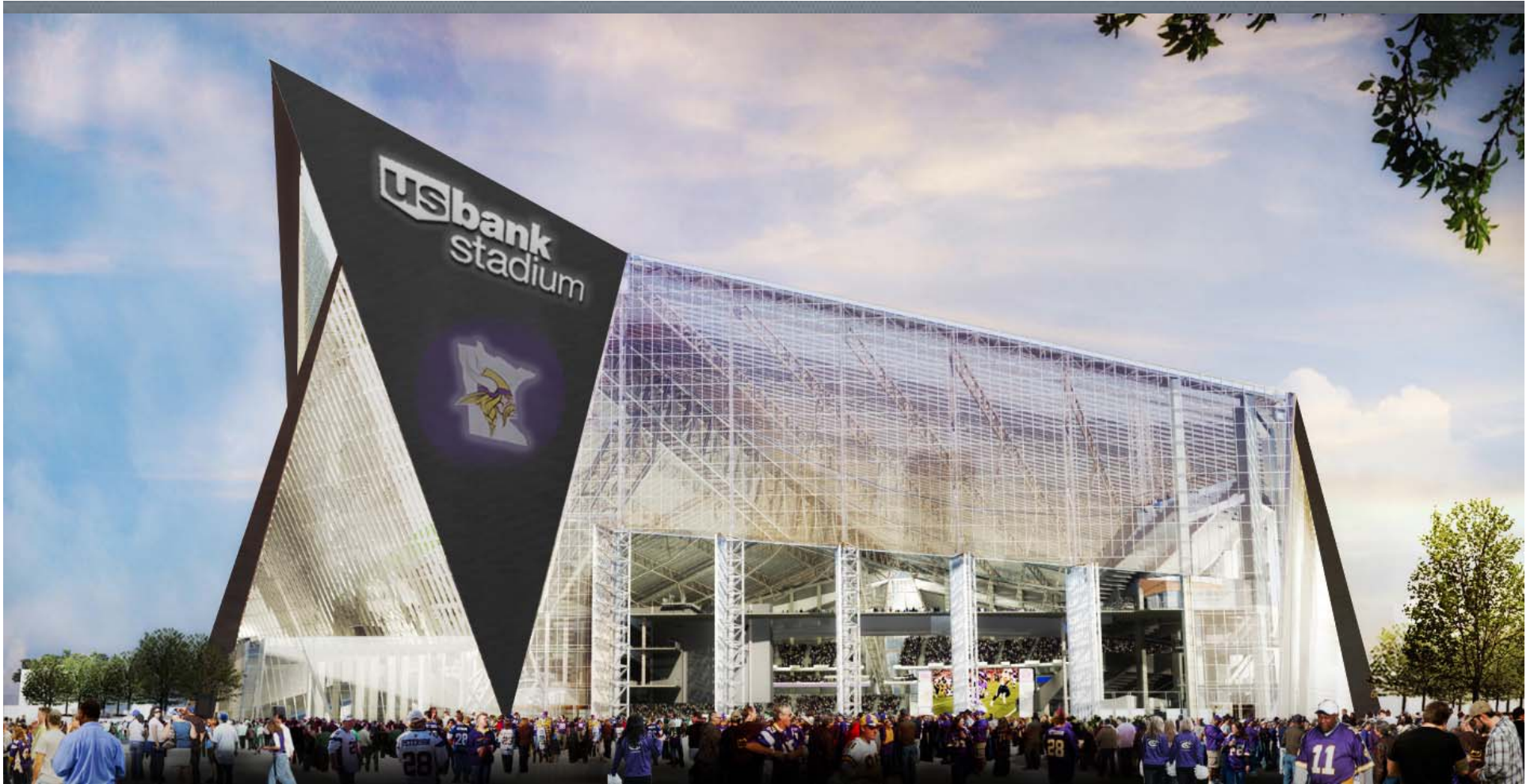


AUGUST 2015



- AT&T, Dallas Cowboys: 180' x 72'
- Levi's Stadium, San Francisco 49ers, Built in 2014: 200' x 48'
- Sports Authority Field, Denver Broncos: 220' x 40'
- Target Field, Minnesota Twins: 101' x 57'
- New Minnesota Vikings: 120' x 68'

SCOREBOARD

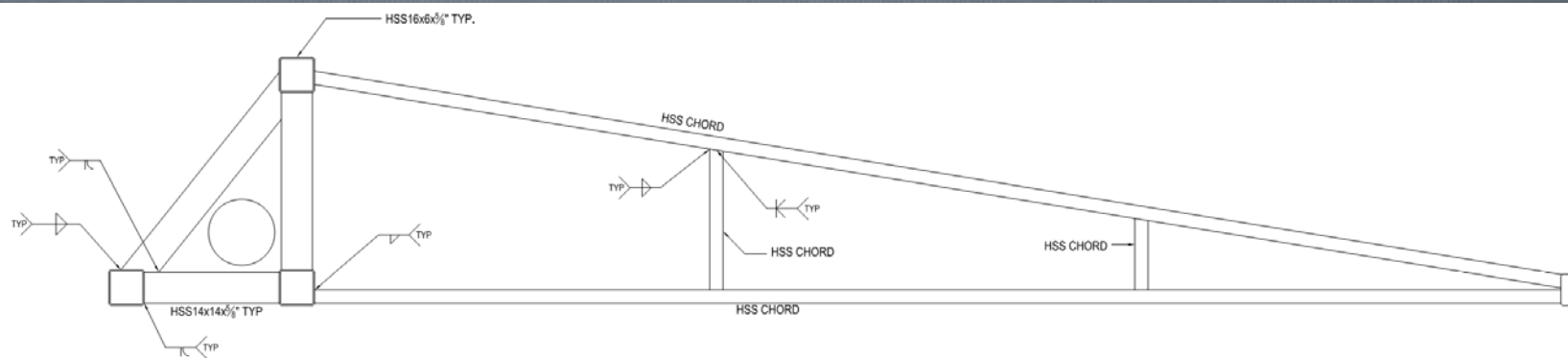


- Largest pivoting doors in the world
- Five doors spanning from 95' tall to 75' tall by 55' wide
- Operated by hydraulic arms

OPERABLE GLASS DOORS



OPERABLE GLASS DOORS

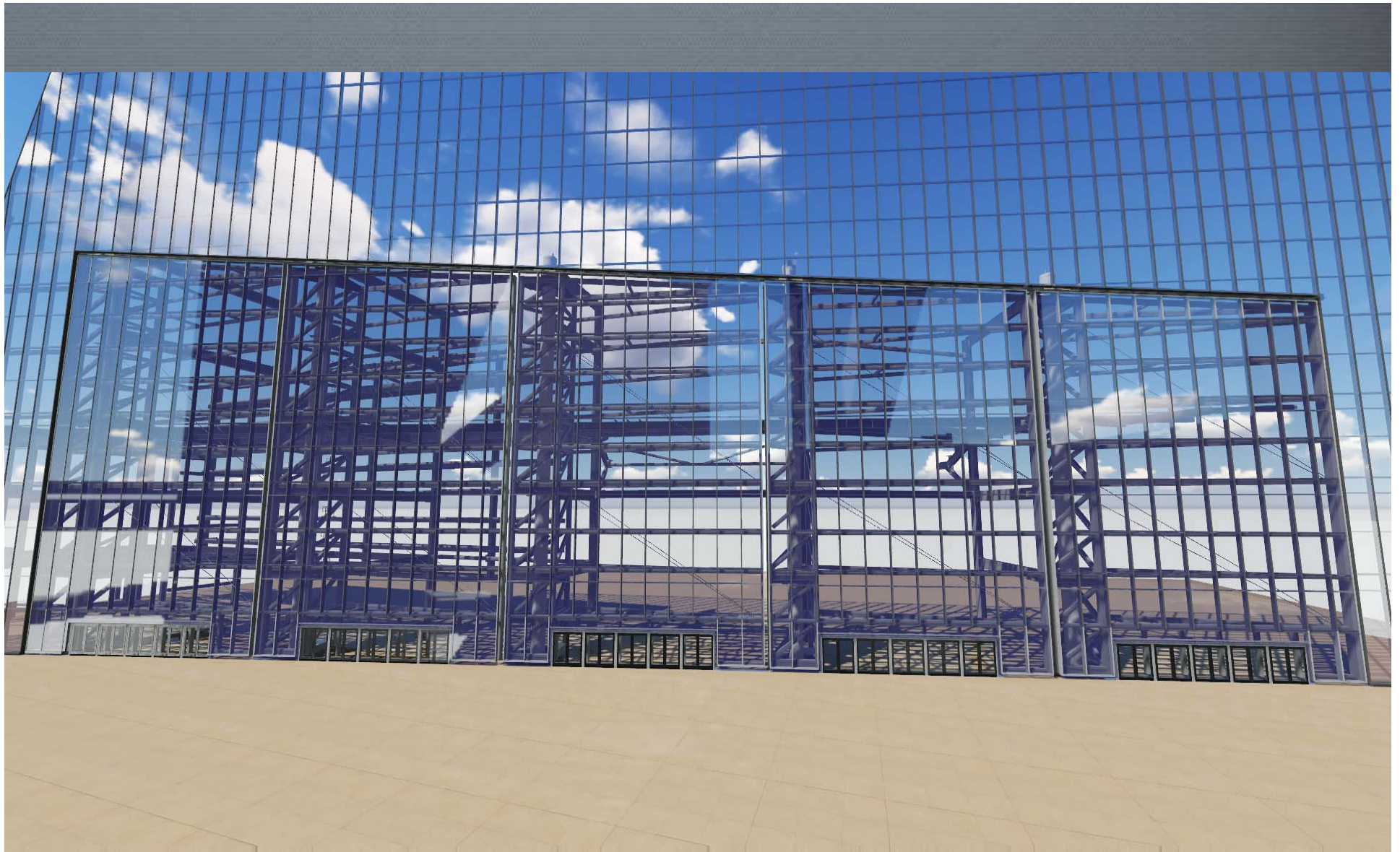


1 **TYPICAL HORIZONTAL FRAME**

NOTES:
1. SEE DMO.02 FOR SECTION SIZES.



OPERABLE GLASS DOORS



HYDRAULIC ARMS

● WWW.MORTENSON.COM

Minnesota Multipurpose Stadium Current Status

- Project Is Nearly 80% Complete
 - Roughly \$679M of Work Installed to Date
 - Over 2.1 Million Craft Worker Hours
- 1400+/- Men & Women Working On Site
 - 4% Veteran Workers
 - 37% Minority Workers – Goal 32%
 - 9% Female Workers – Goal 6%
 - Targeted Businesses
 - 17% WBE – Goal 11%
 - 12% MBE – Goal 9%
 - 33 MBE Firms Awarded Contracts
 - 55 WBE Firms Awarded Contracts
 - 228 MN Based Firms Awarded Work



What a Difference a Year Makes

October '14



What a Difference a Year Makes October '15

